

**5D Plan Report****ANADARKO**

**Field Name:** *WATTENBURG\_NAD83*  
**Site Name:** *GEE 15C-25HZ PAD*  
**Well Name:** *GEE 37N-25HZ*  
**Plan:** *PLAN 1*



## Plan Data for GEE 37N-25HZ

Field: WATTENBURG\_NAD83

Map Unit: USFt Vertical Reference Datum (VRD): Mean Sea Level  
Projected Coordinate System: NAD83 / Colorado North (ftUS)

Site: GEE 15C-25HZ PAD

Unit: USFet TVD Reference:

Company Name: ANADARKO

Position: Northing: 1290361.43USft Latitude: 40.128524°

Easting: 3185826.54USft Longitude: -104.835439°

North Reference: True Grid Convergence: 0.43°

Elevation Above VRD: 4859.00USft

Slot: GEE 37N-25HZ

Position:

Offset is from Site centre

+N/-S: 87.06USft Northing: 1290448.66USft Latitude: 40.128763°

+E/-W: 23.21USft Easting: 3185849.10USft Longitude: -104.835356°

Elevation Above VRD: 4859.00USft

Well: GEE 37N-25HZ

Type: Main-Well

File Number:

Vertical Section: Position offset of origin from Slot centre:

+N/-S: -87.06USft Azimuth: 180.08°

+E/-W: -23.21USft

Magnetic Parameters:

Model: Field Strength: Declination: Dip: Date:

BGGM 52735(nT) 8.63° 66.74° 2013-07-08

## Plan Point Information:

DogLeg Severity Unit: °/100.00ft

Position offsets from Slot centre

MD	Inc	Az	TVD	+N/-S	+E/-W	VSec	DLS	Toolface	Build	Turn
(USft)	(°)	(°)	(USft)	(USft)	(USft)	(USft)	(DLSU)	(°)	(DLSU)	(DLSU)
0.00	0.00	0.00	0.00	0.00	0.00	0.00	0.00	0.0	0.00	0.00
3300.00	0.00	0.00	3300.00	0.00	0.00	0.00	0.00	0.0	0.00	0.00
4121.62	16.43	24.92	4110.40	106.12	49.30	-106.19	2.00	24.9	2.00	0.00
5878.64	16.43	24.92	5795.65	556.89	258.70	-557.25	0.00	0.0	0.00	0.00
6700.26	0.00	0.00	6606.06	663.01	308.00	-663.44	2.00	180.0	-2.00	0.00
7596.73	89.65	180.08	7179.00	93.58	307.17	-94.01	10.00	180.1	10.00	0.00
17495.42	89.65	180.08	7240.00	-9804.91	292.62	9804.50	0.00	0.0	0.00	0.00

## Target Set Information:

Name: GEE 37N-25HZ

Name TVD Lat Long

(USft) (°) (°)

PBHL 7240.00 40.101847 -104.834310

## Formation Point Information:

Name TVD Elevation MD

(USft) (USft) (USft)

SUSSEX 4548.00 328.00 4577.85

SHARON SPRINGS 7087.00 -2211.00 7271.03

NIOBRARA A 7116.00 -2240.00 7329.02

NIOBRARA B 7149.00 -2273.00 7413.99

## Casing Point Information:

Name MD TVD

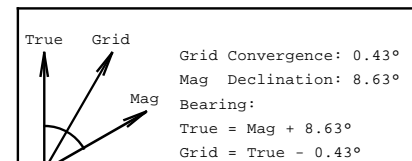
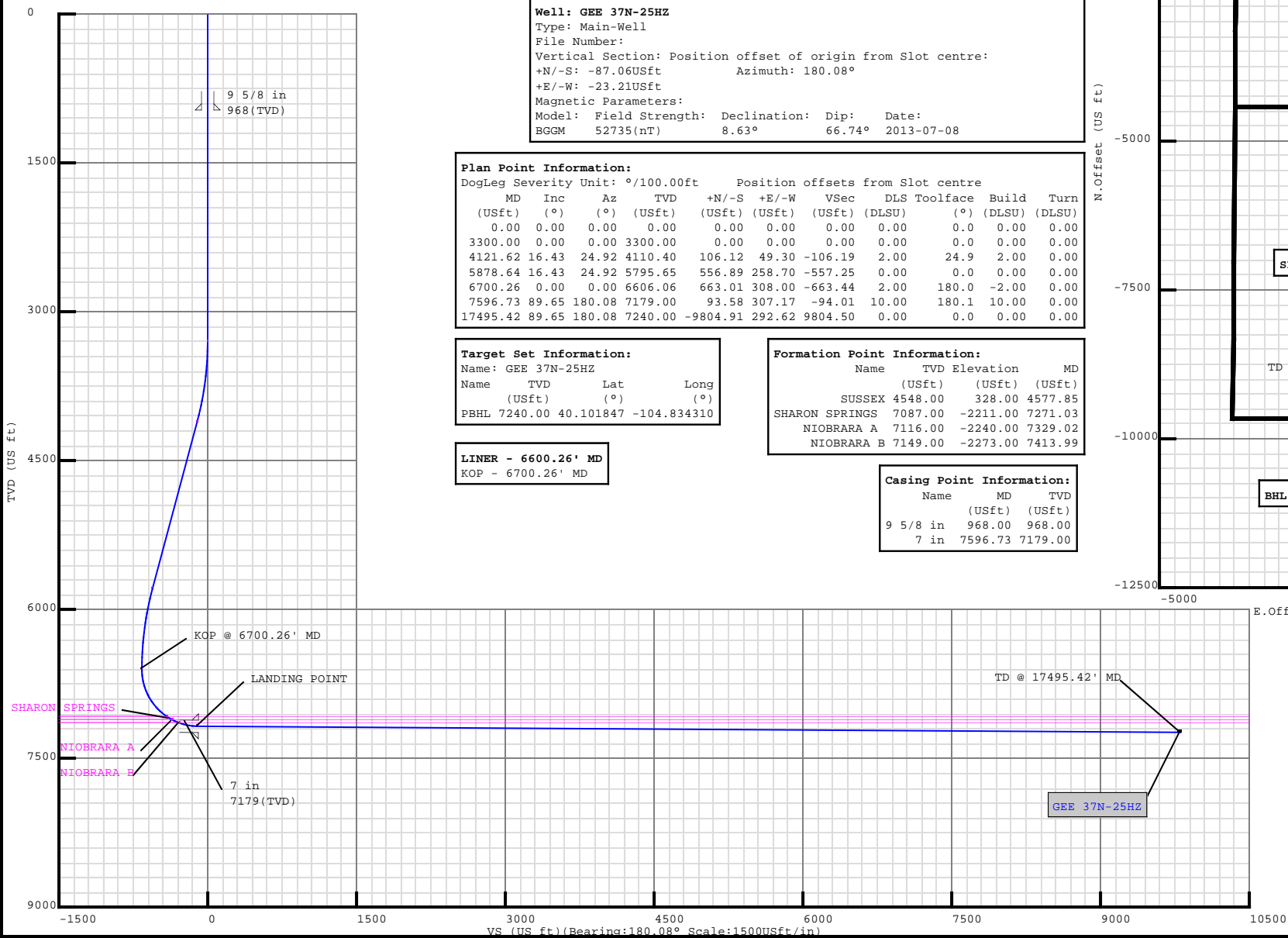
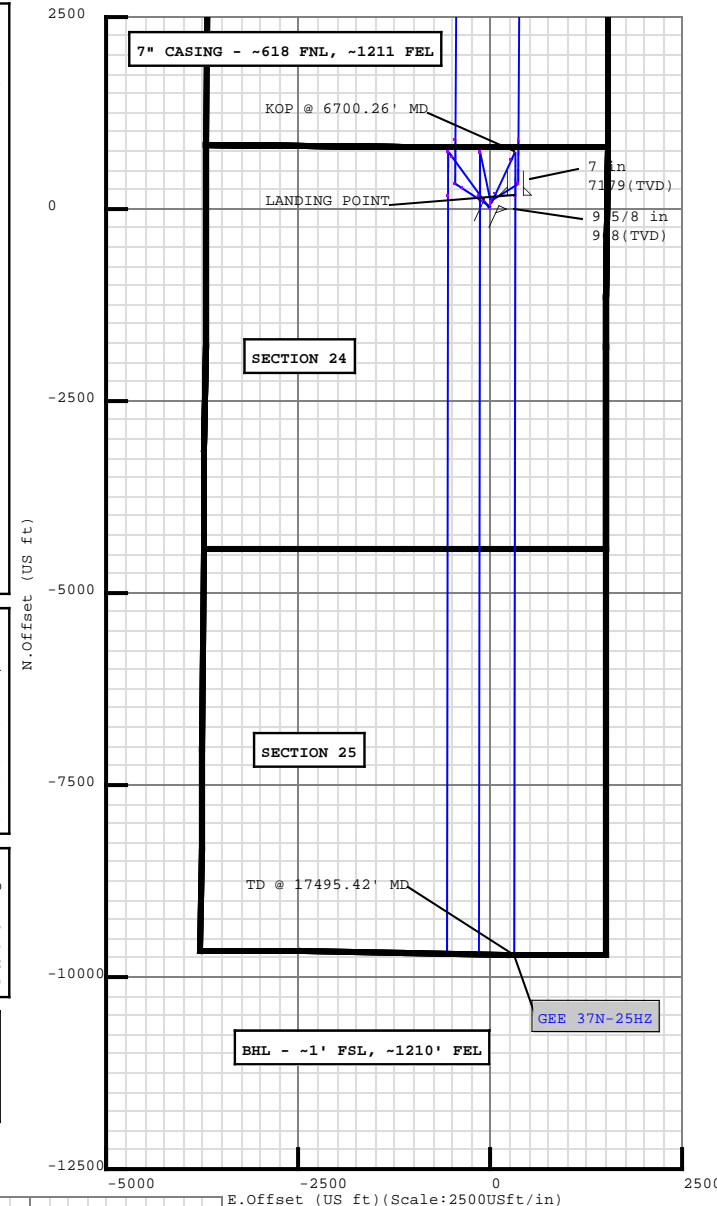
(USft) (USft)

9 5/8 in 968.00 968.00

7 in 7596.73 7179.00

## LINER - 6600.26' MD

KOP - 6700.26' MD



## Plan Surveys for the GEE 37N-25HZ

<b>Site Name</b> GEE 15C-25HZ PAD	<b>Units :</b> US ft	<b>North Reference :</b> True	<b>Convergence Angle :</b> 0.43
	<b>Position</b>	<b>Northing :</b> 1290361.43 US ft	<b>Latitude :</b> 40.128524
		<b>Easting :</b> 3185826.54 US ft	<b>Longitude :</b> -104.835439
	<b>Elevation above:</b> 4859.00 US ft <b>Comment :</b>		
<b>Slot Name</b> GEE 37N-25HZ	<b>Position (Offsets relative to Site Centre)</b>		
	<b>+N / -S :</b> 87.06 US ft	<b>Northing :</b> 1290448.66 US ft	<b>Latitude :</b> 40.128763
	<b>+E / -W :</b> 23.21 US ft	<b>Easting :</b> 3185849.10 US ft	<b>Longitude :</b> -104.835356
	<b>Slot TVD Reference :</b> Ground Elevation <b>Elevation above :</b> 4859.00 US ft <b>Comment :</b>		
<b>Well Name</b> GEE 37N-25HZ	<b>Type :</b> Main well	<b>UWI :</b>	<b>Plan :</b> PLAN 1
	<b>Rig Height <i>Drill Floor</i> :</b> 17.00 US ft	<b>Comment :</b>	
	<b>Relative to :</b> 4876.00 US ft		
	<b>Closure Distance :</b> 9809.28 US ft	<b>Closure Azimuth :</b> 178.291°	
	<b>Vertical Section (Position of Origin Relative to Slot )</b>		
	<b>+N / -S :</b> -87.06 US ft	<b>+E / -W :</b> -23.21 US ft	<b>Az :</b> 180.08°
	<b>Magnetic Parameters</b>		
	<b>Model :</b> BGGM	<b>Field Strength :</b> 52735.4nT	<b>Dec :</b> 8.63°
		<b>Dip :</b> 66.74°	<b>Date :</b> 08/Jul/2013

**Target Set****Name :** GEE 37N-25HZ**Number of Targets :** 1**Comment :**

TargetName:	Position (Relative to centre)			
PBHL	+N / -S : -9804.92US ft		Northing : 1280646.21 US ft	Latitude : 40°6'6.649200"
Shape:	+E / -W : 292.61 US ft		Easting : 3186215.18US ft	Longitude : -104°50'3.516000"
Cuboid	TVD (Drill Floor) : 7240.00 US ft			
	Orientation	Azimuth : 0.00°	Inclination : 0.00°	
	Dimensions	Length : 20.00 US ft	Breadth : 20.00 US ft	Height : 20.00 US ft

Casing Points (Relative to centre, TVD relative to Drill Floor )									
Name	MD (US ft)	Inc (°)	Az (°)	TVD (US ft)	N.Offset (US ft)	E.Offset (US ft)	Latitude (°)	Longitude (°)	
9 5/8 in	968.00	0.00	0.00	968.00	0.00	0.00	40.128763	-104.835356	
7 in	7596.73	89.65	180.08	7179.00	93.58	307.17	40.129020	-104.834257	

**Well path created using minimum curvature**

Salient Points (Relative to centre, TVD relative to Drill Floor )										
MD (US ft)	Inc (°)	Az (°)	TVD (US ft)	N.Offset (US ft)	E.Offset (US ft)	DLS (°/100 US ft)	T.Face (°)	VS (US ft)	Comment	
0.00	0.00	0.00	0.00	0.00	0.00	0.00	0.00	-87.09		
968.00	0.00	0.00	968.00	0.00	0.00	0.00	0.00	-87.09	9 5/8 in	
3300.00	0.00	0.00	3300.00	0.00	0.00	0.00	0.00	-87.09		
4121.62	16.43	24.92	4110.40	106.12	49.30	2.00	24.92	-193.28		
4577.85	16.43	24.92	4548.00	223.17	103.67	0.00	0.00	-310.41	SUSSEX :	
5878.64	16.43	24.92	5795.65	556.89	258.70	0.00	0.00	-644.34		
6700.26	0.00	0.00	6606.06	663.01	308.00	2.00	180.00	-750.53	KOP @ 6700.26' MD	
7271.03	57.08	180.08	7087.00	401.46	307.62	10.00	180.08	-488.98	SHARON SPRINGS :	
7329.02	62.88	180.08	7116.00	351.27	307.55	10.00	0.00	-438.80	NIOBRARA A :	
7413.99	71.37	180.08	7149.00	273.06	307.43	10.00	0.00	-360.58	NIOBRARA B :	
7596.73	89.65	180.08	7179.00	93.58	307.17	10.00	0.00	-181.11	LANDING POINT	
7596.73	89.65	180.08	7179.00	93.58	307.17	0.00	0.00	-181.10	7 in	
17495.42	89.65	180.08	7240.00	-9804.91	292.62	0.00	0.00	9717.40	TD @ 17495.42' MD	

## 5D Plan Report

Interpolated Points (Relative to centre, TVD relative to Drill Floor )									
MD (US ft)	Inc (°)	Az (°)	TVD (US ft)	N.Offset (US ft)	E.Offset (US ft)	DLS (°/100 US ft)	T.Face (°)	VS (US ft)	Comment
0.00	0.00	0.00	0.00	0.00	0.00	0.00	0.00	-87.09	9 5/8 in
100.00	0.00	0.00	100.00	0.00	0.00	0.00	0.00	-87.09	
200.00	0.00	0.00	200.00	0.00	0.00	0.00	0.00	-87.09	
300.00	0.00	0.00	300.00	0.00	0.00	0.00	0.00	-87.09	
400.00	0.00	0.00	400.00	0.00	0.00	0.00	0.00	-87.09	
500.00	0.00	0.00	500.00	0.00	0.00	0.00	0.00	-87.09	
600.00	0.00	0.00	600.00	0.00	0.00	0.00	0.00	-87.09	
700.00	0.00	0.00	700.00	0.00	0.00	0.00	0.00	-87.09	
800.00	0.00	0.00	800.00	0.00	0.00	0.00	0.00	-87.09	
900.00	0.00	0.00	900.00	0.00	0.00	0.00	0.00	-87.09	
968.00	0.00	0.00	968.00	0.00	0.00	0.00	0.00	-87.09	
1000.00	0.00	0.00	1000.00	0.00	0.00	0.00	0.00	-87.09	
1100.00	0.00	0.00	1100.00	0.00	0.00	0.00	0.00	-87.09	
1200.00	0.00	0.00	1200.00	0.00	0.00	0.00	0.00	-87.09	
1300.00	0.00	0.00	1300.00	0.00	0.00	0.00	0.00	-87.09	
1400.00	0.00	0.00	1400.00	0.00	0.00	0.00	0.00	-87.09	
1500.00	0.00	0.00	1500.00	0.00	0.00	0.00	0.00	-87.09	
1600.00	0.00	0.00	1600.00	0.00	0.00	0.00	0.00	-87.09	
1700.00	0.00	0.00	1700.00	0.00	0.00	0.00	0.00	-87.09	
1800.00	0.00	0.00	1800.00	0.00	0.00	0.00	0.00	-87.09	
1900.00	0.00	0.00	1900.00	0.00	0.00	0.00	0.00	-87.09	
2000.00	0.00	0.00	2000.00	0.00	0.00	0.00	0.00	-87.09	
2100.00	0.00	0.00	2100.00	0.00	0.00	0.00	0.00	-87.09	
2200.00	0.00	0.00	2200.00	0.00	0.00	0.00	0.00	-87.09	
2300.00	0.00	0.00	2300.00	0.00	0.00	0.00	0.00	-87.09	
2400.00	0.00	0.00	2400.00	0.00	0.00	0.00	0.00	-87.09	
2500.00	0.00	0.00	2500.00	0.00	0.00	0.00	0.00	-87.09	
2600.00	0.00	0.00	2600.00	0.00	0.00	0.00	0.00	-87.09	
2700.00	0.00	0.00	2700.00	0.00	0.00	0.00	0.00	-87.09	
2800.00	0.00	0.00	2800.00	0.00	0.00	0.00	0.00	-87.09	
2900.00	0.00	0.00	2900.00	0.00	0.00	0.00	0.00	-87.09	
3000.00	0.00	0.00	3000.00	0.00	0.00	0.00	0.00	-87.09	
3100.00	0.00	0.00	3100.00	0.00	0.00	0.00	0.00	-87.09	
3200.00	0.00	0.00	3200.00	0.00	0.00	0.00	0.00	-87.09	
3300.00	0.00	0.00	3300.00	0.00	0.00	0.00	0.00	-87.09	
3400.00	2.00	24.92	3399.98	1.58	0.74	2.00	24.92	-88.68	
3500.00	4.00	24.92	3499.84	6.33	2.94	2.00	0.00	-93.43	
3600.00	6.00	24.92	3599.45	14.23	6.61	2.00	0.00	-101.34	
3700.00	8.00	24.92	3698.70	25.28	11.75	2.00	0.00	-112.39	
3800.00	10.00	24.92	3797.47	39.47	18.34	2.00	0.00	-126.59	
3900.00	12.00	24.92	3895.62	56.78	26.38	2.00	0.00	-143.91	

## 5D Plan Report

Interpolated Points (Relative to centre, TVD relative to Drill Floor )									
MD (US ft)	Inc (°)	Az (°)	TVD (US ft)	N.Offset (US ft)	E.Offset (US ft)	DLS (°/100 US ft)	T.Face (°)	VS (US ft)	Comment
4000.00	14.00	24.92	3993.06	77.18	35.85	2.00	0.00	-164.32	
4100.00	16.00	24.92	4089.64	100.65	46.76	2.00	0.00	-187.81	
4121.62	16.43	24.92	4110.40	106.12	49.30	2.00	0.00	-193.28	
4200.00	16.43	24.92	4185.58	126.23	58.64	0.00	0.00	-213.41	
4300.00	16.43	24.92	4281.50	151.89	70.56	0.00	0.00	-239.08	
4400.00	16.43	24.92	4377.41	177.54	82.48	0.00	0.00	-264.75	
4500.00	16.43	24.92	4473.33	203.20	94.40	0.00	0.00	-290.42	
4577.85	16.43	24.92	4548.00	223.17	103.67	0.00	0.00	-310.41	SUSSEX :
4600.00	16.43	24.92	4569.24	228.85	106.31	0.00	0.00	-316.09	
4700.00	16.43	24.92	4665.16	254.51	118.23	0.00	0.00	-341.76	
4800.00	16.43	24.92	4761.07	280.16	130.15	0.00	0.00	-367.44	
4900.00	16.43	24.92	4856.99	305.82	142.07	0.00	0.00	-393.11	
5000.00	16.43	24.92	4952.90	331.47	153.99	0.00	0.00	-418.78	
5100.00	16.43	24.92	5048.82	357.13	165.91	0.00	0.00	-444.45	
5200.00	16.43	24.92	5144.74	382.78	177.82	0.00	0.00	-470.12	
5300.00	16.43	24.92	5240.65	408.44	189.74	0.00	0.00	-495.80	
5400.00	16.43	24.92	5336.57	434.09	201.66	0.00	0.00	-521.47	
5500.00	16.43	24.92	5432.48	459.75	213.58	0.00	0.00	-547.14	
5600.00	16.43	24.92	5528.40	485.40	225.50	0.00	0.00	-572.81	
5700.00	16.43	24.92	5624.31	511.06	237.41	0.00	0.00	-598.48	
5800.00	16.43	24.92	5720.23	536.71	249.33	0.00	0.00	-624.15	
5878.64	16.43	24.92	5795.65	556.89	258.70	0.00	0.00	-644.34	
5900.00	16.01	24.92	5816.17	562.30	261.22	2.00	180.00	-649.76	
6000.00	14.01	24.92	5912.75	585.78	272.13	2.00	180.00	-673.25	
6100.00	12.01	24.92	6010.18	606.19	281.61	2.00	180.00	-693.67	
6200.00	10.01	24.92	6108.34	623.50	289.65	2.00	180.00	-711.00	
6300.00	8.01	24.92	6207.10	637.69	296.24	2.00	180.00	-725.20	
6400.00	6.01	24.92	6306.35	648.75	301.38	2.00	180.00	-736.27	
6500.00	4.01	24.92	6405.96	656.66	305.06	2.00	180.00	-744.18	
6600.00	2.01	24.92	6505.82	661.42	307.27	2.00	180.00	-748.94	
6700.00	0.01	24.92	6605.80	663.01	308.00	2.00	180.00	-750.53	
6700.26	0.00	0.00	6606.06	663.01	308.00	2.00	180.00	-750.53	KOP @ 6700.26' MD
6800.00	9.97	180.08	6705.30	654.35	307.99	10.00	180.08	-741.87	
6900.00	19.97	180.08	6801.78	628.54	307.95	10.00	0.00	-716.07	
7000.00	29.97	180.08	6892.31	586.38	307.89	10.00	0.00	-673.90	
7100.00	39.97	180.08	6974.15	529.13	307.81	10.00	0.00	-616.65	
7200.00	49.97	180.08	7044.80	458.54	307.70	10.00	0.00	-546.06	
7271.03	57.08	180.08	7087.00	401.46	307.62	10.00	0.00	-488.98	SHARON SPRINGS :
7300.00	59.97	180.08	7102.12	376.75	307.58	10.00	0.00	-464.28	
7329.02	62.88	180.08	7116.00	351.27	307.55	10.00	0.00	-438.80	NIOBRARA A :
7400.00	69.97	180.08	7144.37	286.26	307.45	10.00	0.00	-373.78	

## 5D Plan Report

Interpolated Points (Relative to centre, TVD relative to Drill Floor )									
MD (US ft)	Inc (°)	Az (°)	TVD (US ft)	N. Offset (US ft)	E. Offset (US ft)	DLS (°/100 US ft)	T.Face (°)	VS (US ft)	Comment
7413.99	71.37	180.08	7149.00	273.06	307.43	10.00	0.00	-360.58	NIOBRARA B :
7500.00	79.97	180.08	7170.26	189.80	307.31	10.00	0.00	-277.32	
7596.73	89.65	180.08	7179.00	93.58	307.17	10.00	0.00	-181.11	LANDING POINT
7596.73	89.65	180.08	7179.00	93.58	307.17	0.00	0.00	-181.10	7 in
7600.00	89.65	180.08	7179.02	90.31	307.16	0.00	0.00	-177.83	
7700.00	89.65	180.08	7179.64	-9.69	307.02	0.00	0.00	-77.83	
7800.00	89.65	180.08	7180.25	-109.69	306.87	0.00	0.00	22.17	
7900.00	89.65	180.08	7180.87	-209.69	306.72	0.00	0.00	122.16	
8000.00	89.65	180.08	7181.49	-309.68	306.57	0.00	0.00	222.16	
8100.00	89.65	180.08	7182.10	-409.68	306.43	0.00	0.00	322.16	
8200.00	89.65	180.08	7182.72	-509.68	306.28	0.00	0.00	422.16	
8300.00	89.65	180.08	7183.34	-609.68	306.13	0.00	0.00	522.16	
8400.00	89.65	180.08	7183.95	-709.68	305.99	0.00	0.00	622.15	
8500.00	89.65	180.08	7184.57	-809.67	305.84	0.00	0.00	722.15	
8600.00	89.65	180.08	7185.18	-909.67	305.69	0.00	0.00	822.15	
8700.00	89.65	180.08	7185.80	-1009.67	305.55	0.00	0.00	922.15	
8800.00	89.65	180.08	7186.42	-1109.67	305.40	0.00	0.00	1022.15	
8900.00	89.65	180.08	7187.03	-1209.67	305.25	0.00	0.00	1122.14	
9000.00	89.65	180.08	7187.65	-1309.66	305.10	0.00	0.00	1222.14	
9100.00	89.65	180.08	7188.27	-1409.66	304.96	0.00	0.00	1322.14	
9200.00	89.65	180.08	7188.88	-1509.66	304.81	0.00	0.00	1422.14	
9300.00	89.65	180.08	7189.50	-1609.66	304.66	0.00	0.00	1522.14	
9400.00	89.65	180.08	7190.11	-1709.66	304.52	0.00	0.00	1622.14	
9500.00	89.65	180.08	7190.73	-1809.65	304.37	0.00	0.00	1722.13	
9600.00	89.65	180.08	7191.35	-1909.65	304.22	0.00	0.00	1822.13	
9700.00	89.65	180.08	7191.96	-2009.65	304.08	0.00	0.00	1922.13	
9800.00	89.65	180.08	7192.58	-2109.65	303.93	0.00	0.00	2022.13	
9900.00	89.65	180.08	7193.20	-2209.65	303.78	0.00	0.00	2122.13	
10000.00	89.65	180.08	7193.81	-2309.64	303.63	0.00	0.00	2222.12	
10100.00	89.65	180.08	7194.43	-2409.64	303.49	0.00	0.00	2322.12	
10200.00	89.65	180.08	7195.04	-2509.64	303.34	0.00	0.00	2422.12	
10300.00	89.65	180.08	7195.66	-2609.64	303.19	0.00	0.00	2522.12	
10400.00	89.65	180.08	7196.28	-2709.64	303.05	0.00	0.00	2622.12	
10500.00	89.65	180.08	7196.89	-2809.63	302.90	0.00	0.00	2722.11	
10600.00	89.65	180.08	7197.51	-2909.63	302.75	0.00	0.00	2822.11	
10700.00	89.65	180.08	7198.13	-3009.63	302.61	0.00	0.00	2922.11	
10800.00	89.65	180.08	7198.74	-3109.63	302.46	0.00	0.00	3022.11	
10900.00	89.65	180.08	7199.36	-3209.63	302.31	0.00	0.00	3122.11	
11000.00	89.65	180.08	7199.97	-3309.62	302.16	0.00	0.00	3222.10	
11100.00	89.65	180.08	7200.59	-3409.62	302.02	0.00	0.00	3322.10	
11200.00	89.65	180.08	7201.21	-3509.62	301.87	0.00	0.00	3422.10	

## 5D Plan Report

Interpolated Points (Relative to centre, TVD relative to Drill Floor )									
MD (US ft)	Inc (°)	Az (°)	TVD (US ft)	N.Offset (US ft)	E.Offset (US ft)	DLS (°/100 US ft)	T.Face (°)	VS (US ft)	Comment
11300.00	89.65	180.08	7201.82	-3609.62	301.72	0.00	0.00	3522.10	
11400.00	89.65	180.08	7202.44	-3709.62	301.58	0.00	0.00	3622.10	
11500.00	89.65	180.08	7203.05	-3809.61	301.43	0.00	0.00	3722.10	
11600.00	89.65	180.08	7203.67	-3909.61	301.28	0.00	0.00	3822.09	
11700.00	89.65	180.08	7204.29	-4009.61	301.14	0.00	0.00	3922.09	
11800.00	89.65	180.08	7204.90	-4109.61	300.99	0.00	0.00	4022.09	
11900.00	89.65	180.08	7205.52	-4209.61	300.84	0.00	0.00	4122.09	
12000.00	89.65	180.08	7206.14	-4309.60	300.69	0.00	0.00	4222.09	
12100.00	89.65	180.08	7206.75	-4409.60	300.55	0.00	0.00	4322.08	
12200.00	89.65	180.08	7207.37	-4509.60	300.40	0.00	0.00	4422.08	
12300.00	89.65	180.08	7207.98	-4609.60	300.25	0.00	0.00	4522.08	
12400.00	89.65	180.08	7208.60	-4709.60	300.11	0.00	0.00	4622.08	
12500.00	89.65	180.08	7209.22	-4809.59	299.96	0.00	0.00	4722.08	
12600.00	89.65	180.08	7209.83	-4909.59	299.81	0.00	0.00	4822.07	
12700.00	89.65	180.08	7210.45	-5009.59	299.67	0.00	0.00	4922.07	
12800.00	89.65	180.08	7211.07	-5109.59	299.52	0.00	0.00	5022.07	
12900.00	89.65	180.08	7211.68	-5209.59	299.37	0.00	0.00	5122.07	
13000.00	89.65	180.08	7212.30	-5309.58	299.22	0.00	0.00	5222.07	
13100.00	89.65	180.08	7212.91	-5409.58	299.08	0.00	0.00	5322.06	
13200.00	89.65	180.08	7213.53	-5509.58	298.93	0.00	0.00	5422.06	
13300.00	89.65	180.08	7214.15	-5609.58	298.78	0.00	0.00	5522.06	
13400.00	89.65	180.08	7214.76	-5709.58	298.64	0.00	0.00	5622.06	
13500.00	89.65	180.08	7215.38	-5809.57	298.49	0.00	0.00	5722.06	
13600.00	89.65	180.08	7216.00	-5909.57	298.34	0.00	0.00	5822.06	
13700.00	89.65	180.08	7216.61	-6009.57	298.20	0.00	0.00	5922.05	
13800.00	89.65	180.08	7217.23	-6109.57	298.05	0.00	0.00	6022.05	
13900.00	89.65	180.08	7217.84	-6209.57	297.90	0.00	0.00	6122.05	
14000.00	89.65	180.08	7218.46	-6309.56	297.75	0.00	0.00	6222.05	
14100.00	89.65	180.08	7219.08	-6409.56	297.61	0.00	0.00	6322.05	
14200.00	89.65	180.08	7219.69	-6509.56	297.46	0.00	0.00	6422.04	
14300.00	89.65	180.08	7220.31	-6609.56	297.31	0.00	0.00	6522.04	
14400.00	89.65	180.08	7220.93	-6709.56	297.17	0.00	0.00	6622.04	
14500.00	89.65	180.08	7221.54	-6809.55	297.02	0.00	0.00	6722.04	
14600.00	89.65	180.08	7222.16	-6909.55	296.87	0.00	0.00	6822.04	
14700.00	89.65	180.08	7222.77	-7009.55	296.73	0.00	0.00	6922.03	
14800.00	89.65	180.08	7223.39	-7109.55	296.58	0.00	0.00	7022.03	
14900.00	89.65	180.08	7224.01	-7209.55	296.43	0.00	0.00	7122.03	
15000.00	89.65	180.08	7224.62	-7309.54	296.28	0.00	0.00	7222.03	
15100.00	89.65	180.08	7225.24	-7409.54	296.14	0.00	0.00	7322.03	
15200.00	89.65	180.08	7225.86	-7509.54	295.99	0.00	0.00	7422.02	
15300.00	89.65	180.08	7226.47	-7609.54	295.84	0.00	0.00	7522.02	



## 5D Plan Report

Interpolated Points (Relative to centre, TVD relative to Drill Floor )									
MD (US ft)	Inc (°)	Az (°)	TVD (US ft)	N.Offset (US ft)	E.Offset (US ft)	DLS (°/100 US ft)	T.Face (°)	VS (US ft)	Comment
15400.00	89.65	180.08	7227.09	-7709.54	295.70	0.00	0.00	7622.02	
15500.00	89.65	180.08	7227.70	-7809.53	295.55	0.00	0.00	7722.02	
15600.00	89.65	180.08	7228.32	-7909.53	295.40	0.00	0.00	7822.02	
15700.00	89.65	180.08	7228.94	-8009.53	295.26	0.00	0.00	7922.02	
15800.00	89.65	180.08	7229.55	-8109.53	295.11	0.00	0.00	8022.01	
15900.00	89.65	180.08	7230.17	-8209.53	294.96	0.00	0.00	8122.01	
16000.00	89.65	180.08	7230.78	-8309.52	294.81	0.00	0.00	8222.01	
16100.00	89.65	180.08	7231.40	-8409.52	294.67	0.00	0.00	8322.01	
16200.00	89.65	180.08	7232.02	-8509.52	294.52	0.00	0.00	8422.01	
16300.00	89.65	180.08	7232.63	-8609.52	294.37	0.00	0.00	8522.00	
16400.00	89.65	180.08	7233.25	-8709.52	294.23	0.00	0.00	8622.00	
16500.00	89.65	180.08	7233.87	-8809.51	294.08	0.00	0.00	8722.00	
16600.00	89.65	180.08	7234.48	-8909.51	293.93	0.00	0.00	8822.00	
16700.00	89.65	180.08	7235.10	-9009.51	293.79	0.00	0.00	8922.00	
16800.00	89.65	180.08	7235.71	-9109.51	293.64	0.00	0.00	9021.99	
16900.00	89.65	180.08	7236.33	-9209.50	293.49	0.00	0.00	9121.99	
17000.00	89.65	180.08	7236.95	-9309.50	293.34	0.00	0.00	9221.99	
17100.00	89.65	180.08	7237.56	-9409.50	293.20	0.00	0.00	9321.99	
17200.00	89.65	180.08	7238.18	-9509.50	293.05	0.00	0.00	9421.99	
17300.00	89.65	180.08	7238.80	-9609.50	292.90	0.00	0.00	9521.99	
17400.00	89.65	180.08	7239.41	-9709.49	292.76	0.00	0.00	9621.98	
17495.42	89.65	180.08	7240.00	-9804.91	292.62	0.00	0.00	9717.40	TD @ 17495.42' MD

Formation Points (Relative to centre, TVD relative to Drill Floor )			
Name	MD (US ft)	TVD (US ft)	
SUSSEX	4577.85	4548.00	
SHARON SPRINGS	7271.03	7087.00	
NIOBRARA A	7329.02	7116.00	
NIOBRARA B	7413.99	7149.00	