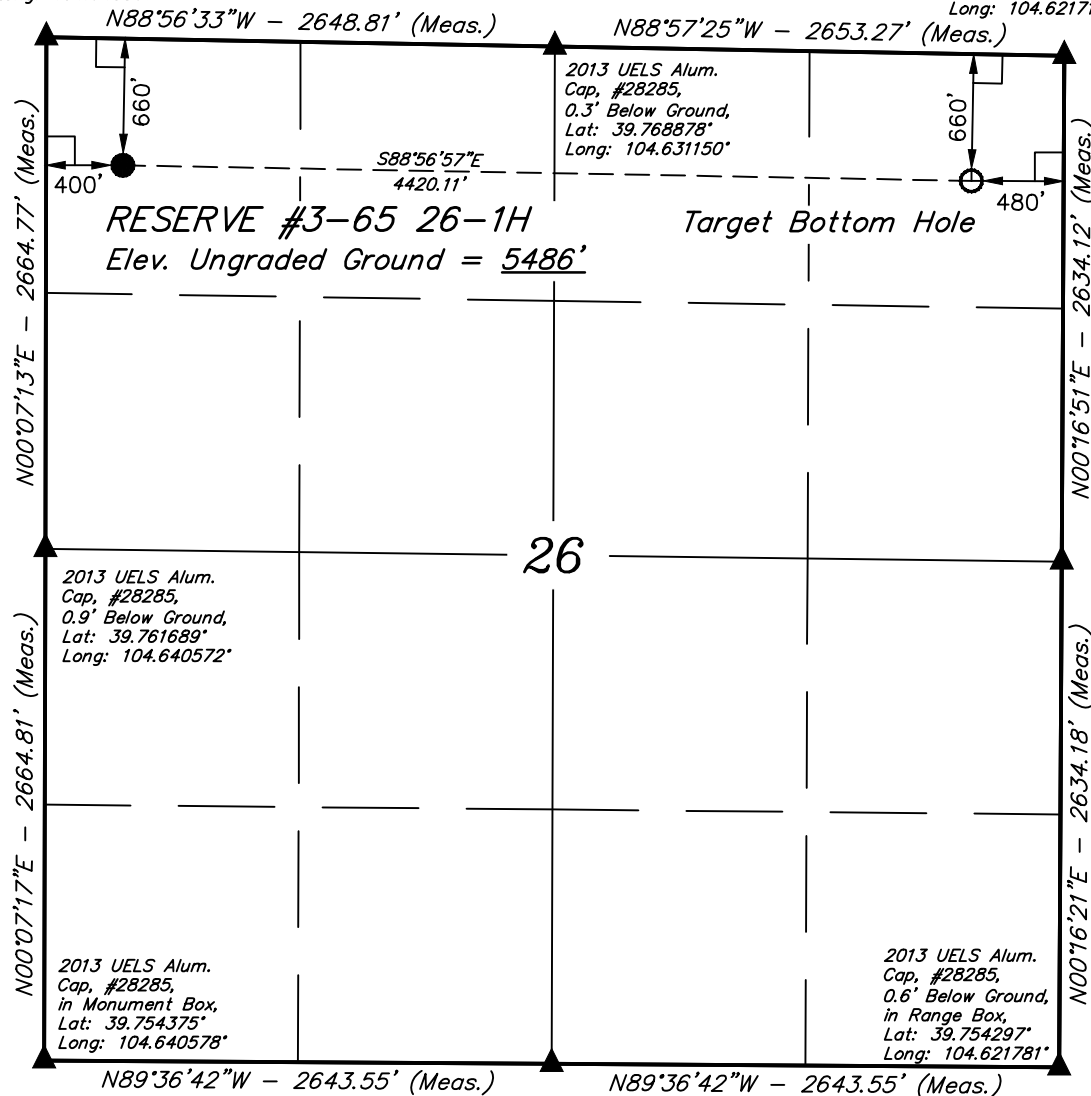


WELL LOCATION PLAT

T3S, R65W, 6th P.M.

2013 UELS Alum.
Cap. #28285,
0.6' Below Ground,
Lat: 39.769003°
Long: 104.640567°

2013 UELS Alum.
Cap. #28285,
0.6' Below Ground,
in Range Box,
Lat: 39.768756°
Long: 104.621714°



ConocoPhillips Company

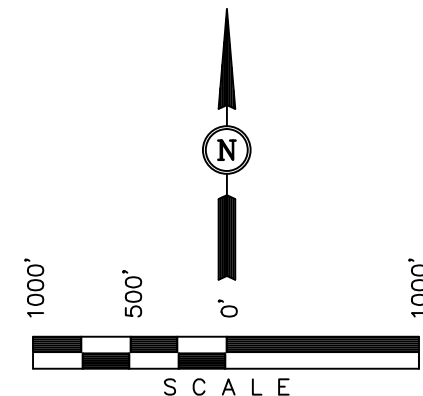
Well location, RESERVE #3-65 26-1H, located as shown in the NW 1/4 NW 1/4 of Section 26, T3S, R65W, 6th P.M., Adams County, Colorado.

BASIS OF ELEVATION

BENCHMARK 374 LOCATED ON THE SECTION LINE BETWEEN SECTIONS 12 & 13, T5S, R64W, 6th. P.M., TAKEN FROM 1988 PUBLISHED DATUM BY THE UNITED STATES DEPARTMENT OF THE INTERIOR, GEOLOGICAL SURVEY AS BEING 6054.61 FEET.

BASIS OF BEARINGS

BASIS OF BEARINGS IS A G.P.S. OBSERVATION.



CERTIFICATION

THIS IS TO CERTIFY THAT THE ABOVE PLAT WAS PREPARED FROM FIELD NOTES OF ACTUAL SURVEYS MADE BY ME OR UNDER MY SUPERVISION AND THAT THE SAME ARE TRUE AND CORRECT TO THE BEST OF MY KNOWLEDGE AND BELIEF.

REGISTERED LAND SURVEYOR
REGISTRATION NO. 28285
STATE OF COLORADO 09-09-13

REVISED: 09-09-13

UINTAH ENGINEERING & LAND SURVEYING
85 SOUTH 200 EAST - VERNAL, UTAH 84078
(435) 789-1017

LEGEND:

- └─┘ = 90° SYMBOL
- = PROPOSED WELL HEAD
- = TARGET BOTTOM HOLE
- ▲ = SECTION CORNERS LOCATED

Set PK Nail, in
Asphalt,
Flush w/Ground,
Lat: 39.754336°
Long: 104.631178°

PDOP = 1.9

| NAD 83 (TARGET BOTTOM HOLE) | NAD 83 (SURFACE LOCATION) |
|--|--|
| LATITUDE = 39°46'01.08" (39.766967) | LATITUDE = 39°46'01.82" (39.767172) |
| LONGITUDE = 104°37'24.35" (104.623431) | LONGITUDE = 104°38'20.93" (104.639147) |
| NAD 27 (TARGET BOTTOM HOLE) | NAD 27 (SURFACE LOCATION) |
| LATITUDE = 39°46'01.13" (39.766981) | LATITUDE = 39°46'01.87" (39.767186) |
| LONGITUDE = 104°37'22.46" (104.622906) | LONGITUDE = 104°38'19.04" (104.638622) |

| | | |
|-------------------------|--------------------------------|-------------------------|
| SCALE 1" = 1000' | DATE SURVEYED: 08-08-13 | DATE DRAWN: 08-13-13 |
| PARTY D.N. G.W. J.W. | REFERENCES G.L.O. PLAT | |
| WEATHER WARM | FILE ConocoPhillips Company | |

SECTION BREAKDOWN T3S, R65W, 6th P.M.

2013 UELS Alum.
Cap. #28285,
0.6' Below Ground,
Lat: 39.769003°
Long: 104.640567°

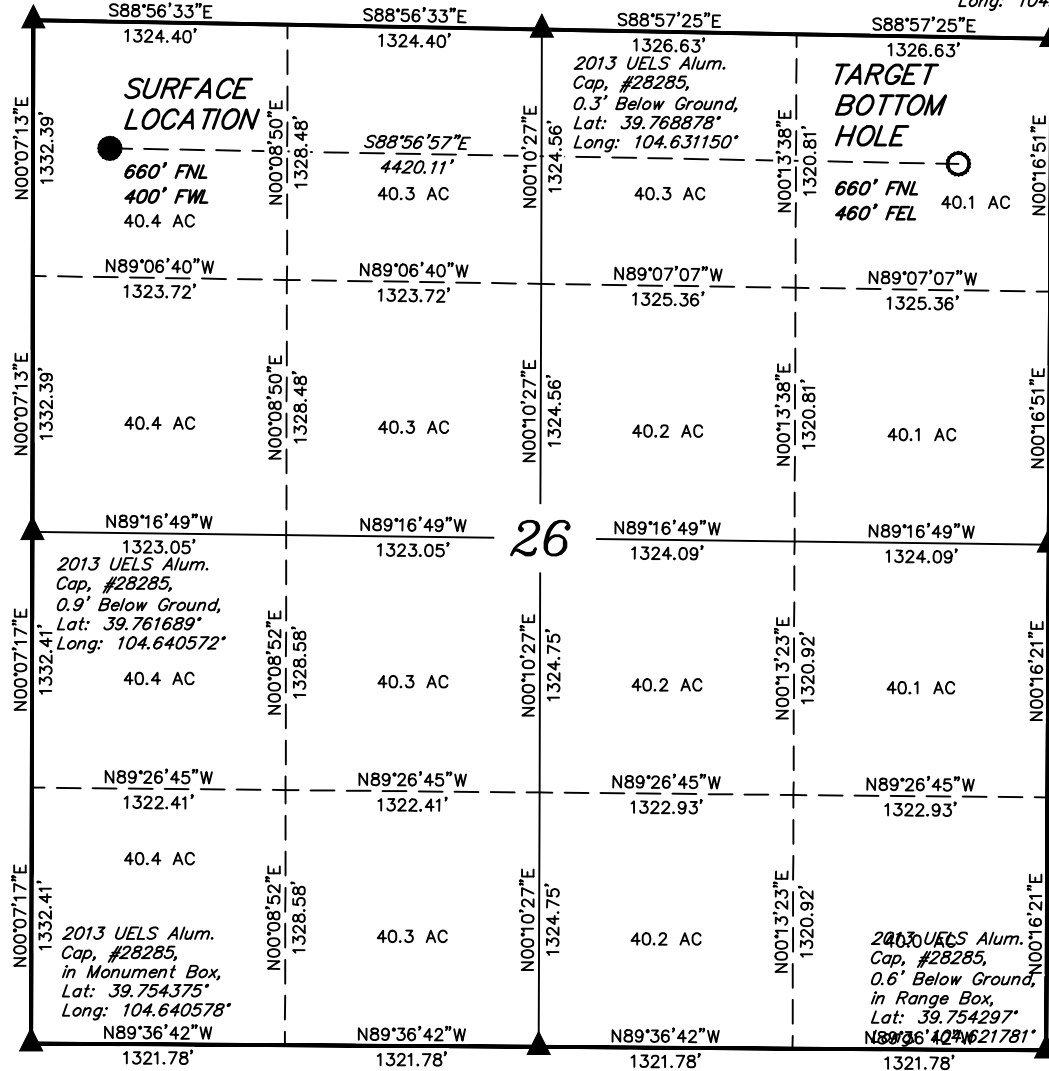
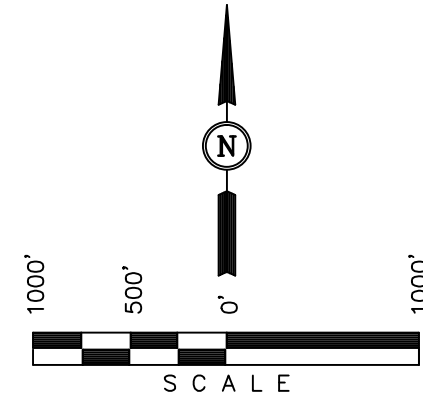
2013 UELS Alum.
Cap. #28285,
0.6' Below Ground,
in Range Box,
Lat: 39.768756°
Long: 104.621714°

ConocoPhillips Company

Well location, RESERVE #3-65 26-1H, located as shown in the NW 1/4 NW 1/4 of Section 26, T3S, R65W, 6th P.M., Adams County, Colorado.

BASIS OF BEARINGS

BASIS OF BEARINGS IS A G.P.S. OBSERVATION.



2013 UELS Alum.
Cap. #28285,
0.9' Below Ground,
in Range Box,
Lat: 39.761528°
Long: 104.621747°

CERTIFICATION

THIS IS TO CERTIFY THAT THE ABOVE PLAT WAS PREPARED FROM FIELD NOTES OF ACTUAL SURVEYS MADE BY ME OR UNDER MY SUPERVISION AND THAT THE SAME ARE TRUE AND CORRECT TO THE BEST OF MY KNOWLEDGE AND BELIEF.

REGISTERED LAND SURVEYOR
REGISTRATION NO. 28285
STATE OF COLORADO 09-09-13

REVISED: 09-09-13

UINTAH ENGINEERING & LAND SURVEYING
85 SOUTH 200 EAST - VERNAL, UTAH 84078
(435) 789-1017

LEGEND:

- └─┘ = 90° SYMBOL
- = PROPOSED WELL HEAD
- = TARGET BOTTOM HOLE
- ▲ = SECTION CORNERS LOCATED

Set PK Nail, in
Asphalt,
Flush w/Ground,
Lat: 39.754336°
Long: 104.631178°

PDOP = 1.9

| NAD 83 (TARGET BOTTOM HOLE) | NAD 83 (SURFACE LOCATION) |
|--|--|
| LATITUDE = 39°46'01.08" (39.766967) | LATITUDE = 39°46'01.82" (39.767172) |
| LONGITUDE = 104°37'24.35" (104.623431) | LONGITUDE = 104°38'20.93" (104.639147) |
| NAD 27 (TARGET BOTTOM HOLE) | NAD 27 (SURFACE LOCATION) |
| LATITUDE = 39°46'01.13" (39.766981) | LATITUDE = 39°46'01.87" (39.767186) |
| LONGITUDE = 104°37'22.46" (104.622906) | LONGITUDE = 104°38'19.04" (104.638622) |

| | | |
|-------------------------|--------------------------------|-------------------------|
| SCALE 1" = 1000' | DATE SURVEYED: 08-08-13 | DATE DRAWN: 08-13-13 |
| PARTY D.N. G.W. J.W. | REFERENCES G.L.O. PLAT | |
| WEATHER WARM | FILE ConocoPhillips Company | |