



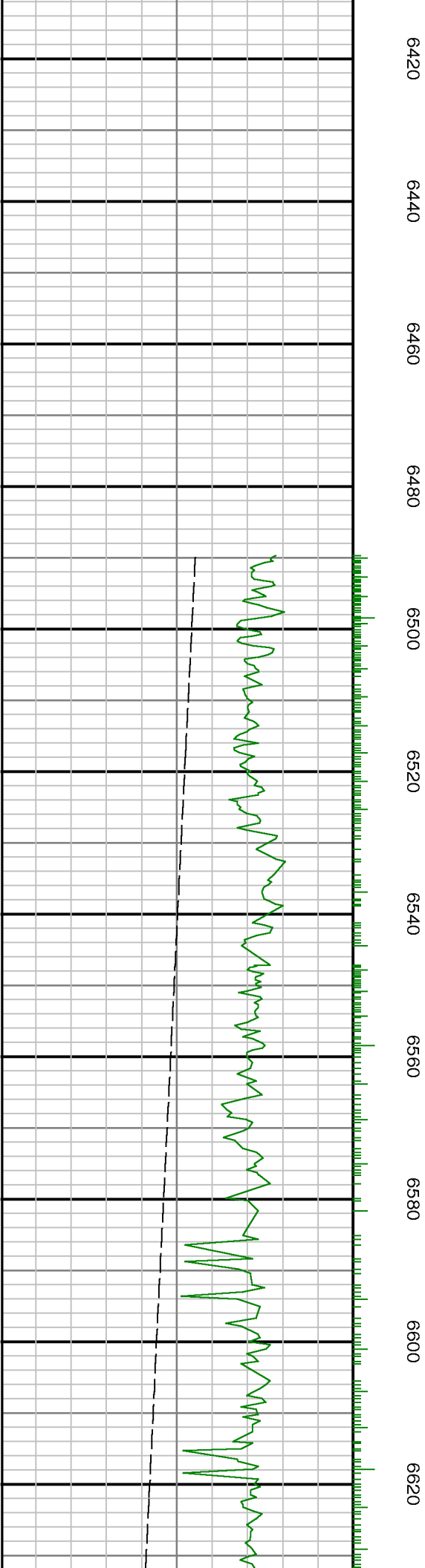
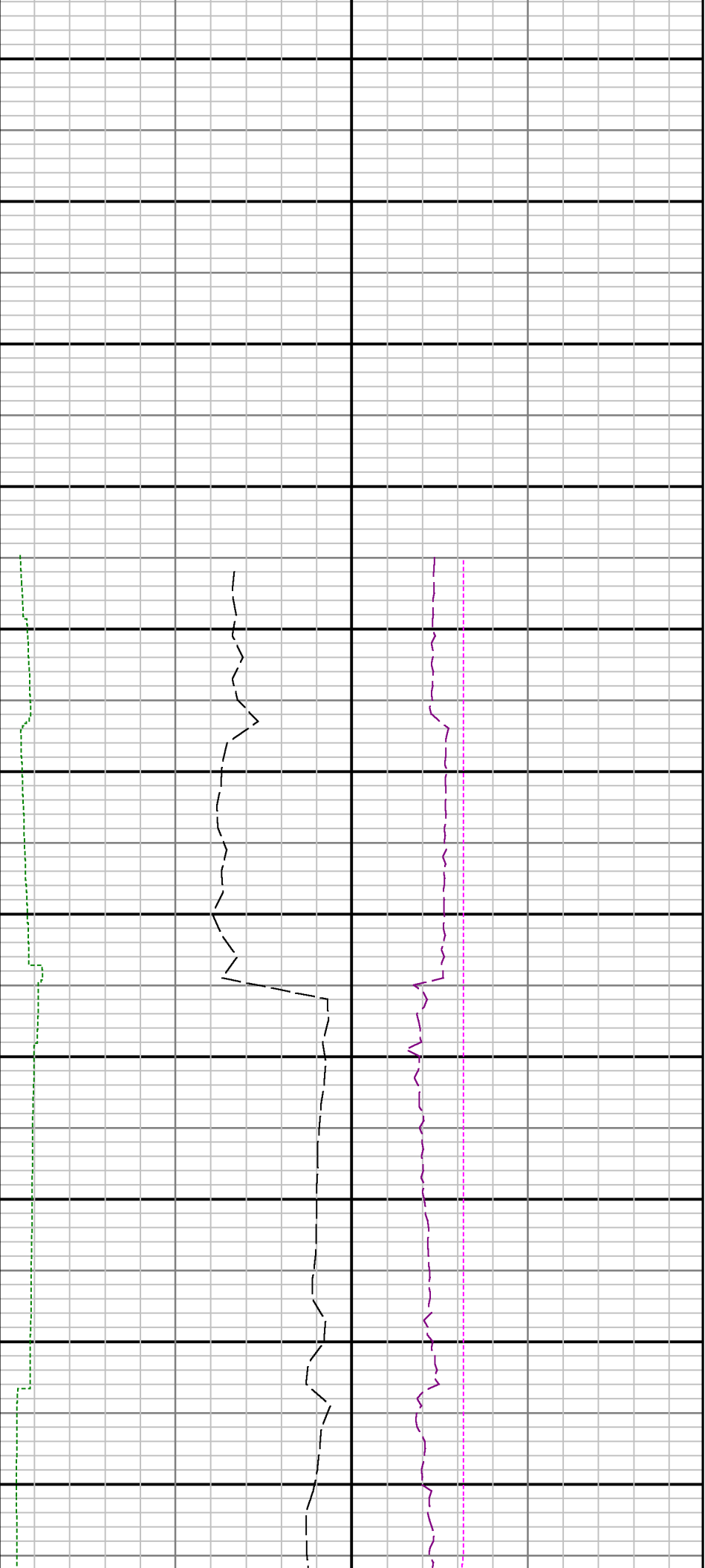
Realtime Log

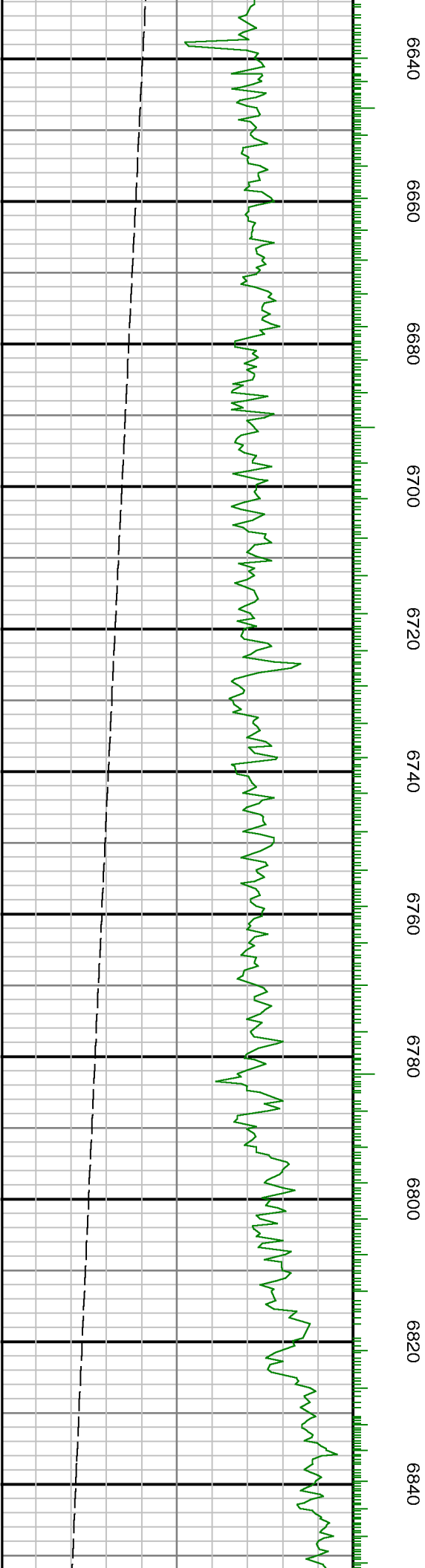
Natural Formation Evaluation Gamma Ray

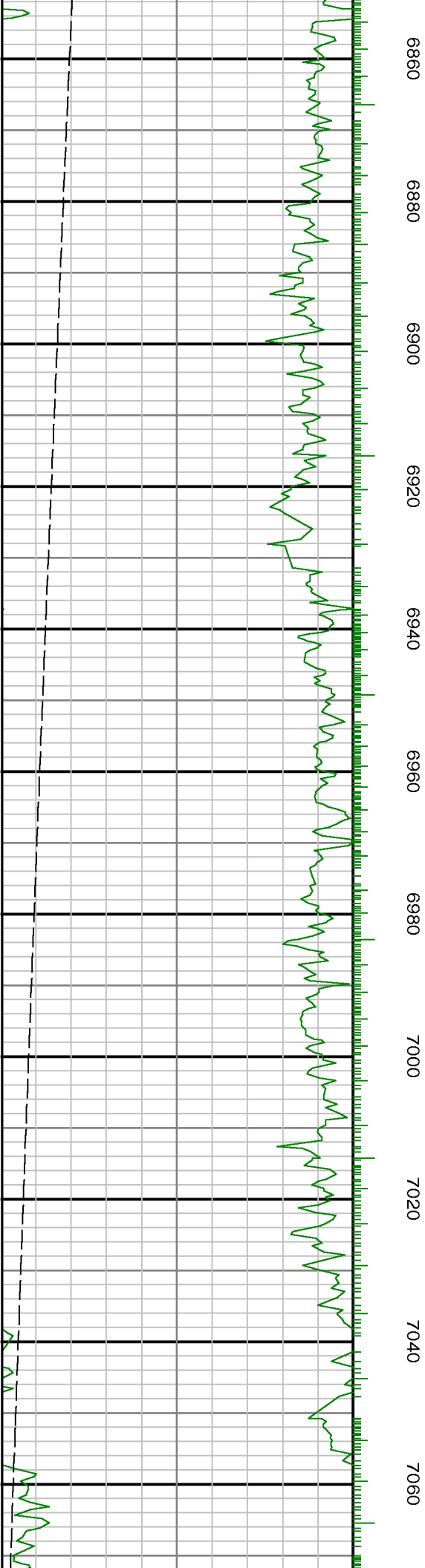
Scale:	Company: Kerr-McGee Oil & Gas Onshore LP		
1:240	Well: Bella Federal 15N-7HZ		
Measured Depth	Field: Weld County (Kerr-McGee)		
	Region: RMD Country: United States		
Status:	Field Print		Surface Location:
API Number:	051233755100		Latitude: 40° 13' 59.210" N Longitude: 104° 48' 7.124" W
Permanent Datum (P.D.):	Ground Level	Elevation:	4891.00 ft.
Log Measured From:	Drill Floor	13.00 ft.	Above P.D.
Depth Reference:	Driller's Depth		
Interval Logged		Dates	Magnetic Field Reference
Top:	0 ft.	Date From: 15/Aug/13	Dip Angle: 66.89 °
Bottom:	50000 ft.	Date To: 15/Aug/14	Total Mag to Reference
	Spud Date: 15/Aug/13	Field Strength: 52653.0 nT	North Correction: 8.54 °
		Other Services:	
		Directional VSS	
		Elevations:	
		KB: N/A	
		DF: 4891.00 ft.	
		GL: 4878.00 ft.	

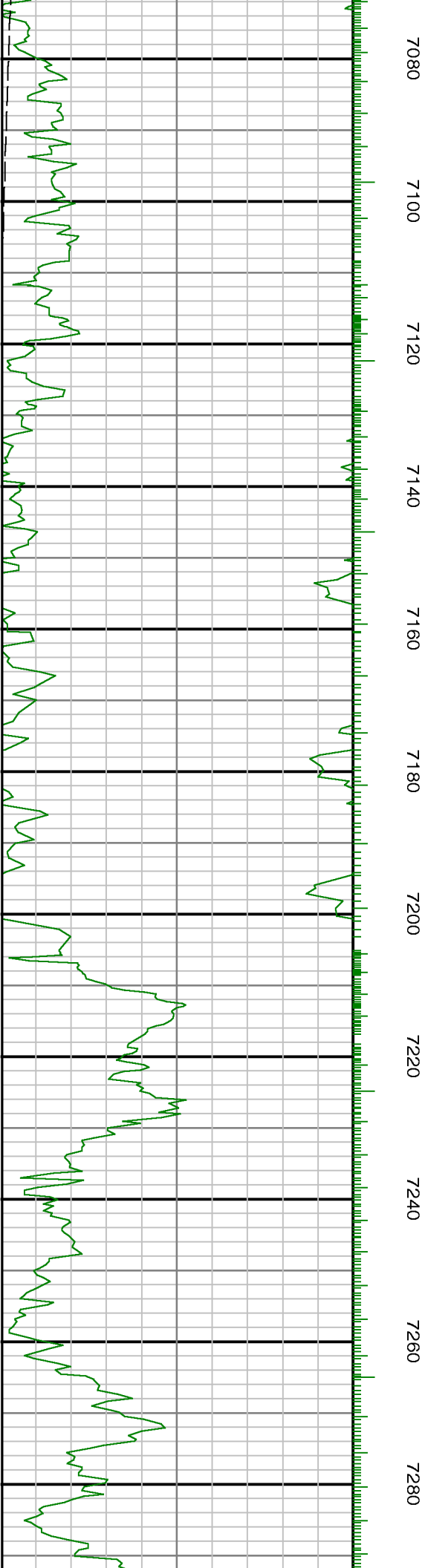
INTEQ does not guarantee the accuracy or correctness of interpretations provided in or from this log. Since all interpretations are opinions based on measurements, INTEQ shall under no circumstances be responsible for consequential damages or any other loss, costs, damages or expenses incurred or sustained in connection with the use of any such interpretations. INTEQ disclaims all expressed and implied warranties related to this service. INTEQ's liabilities and obligations shall be governed by INTEQ's Standard Terms and Conditions.

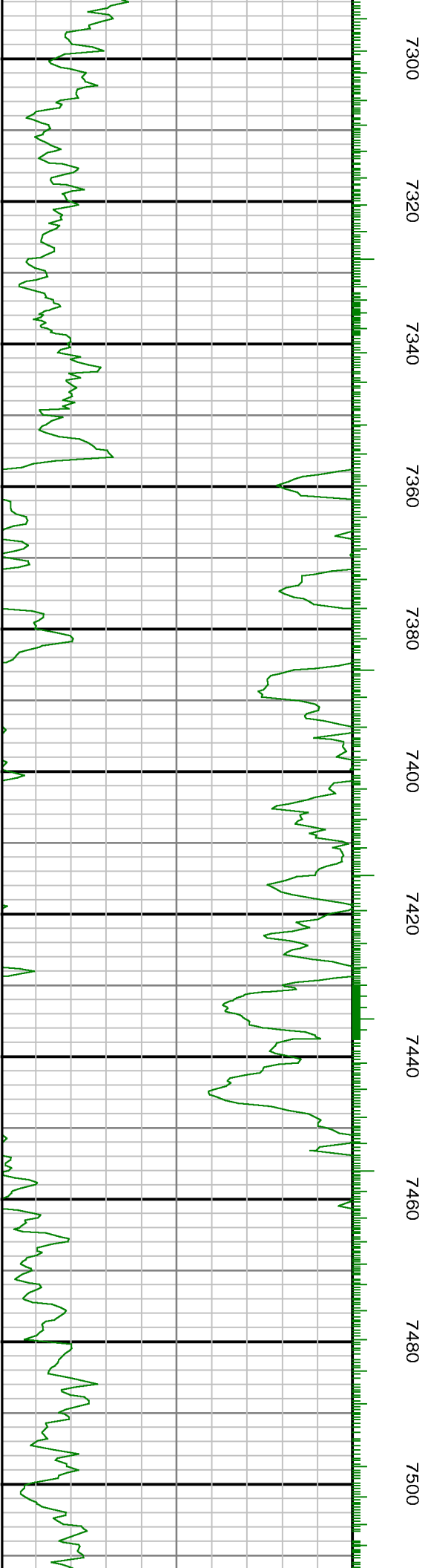
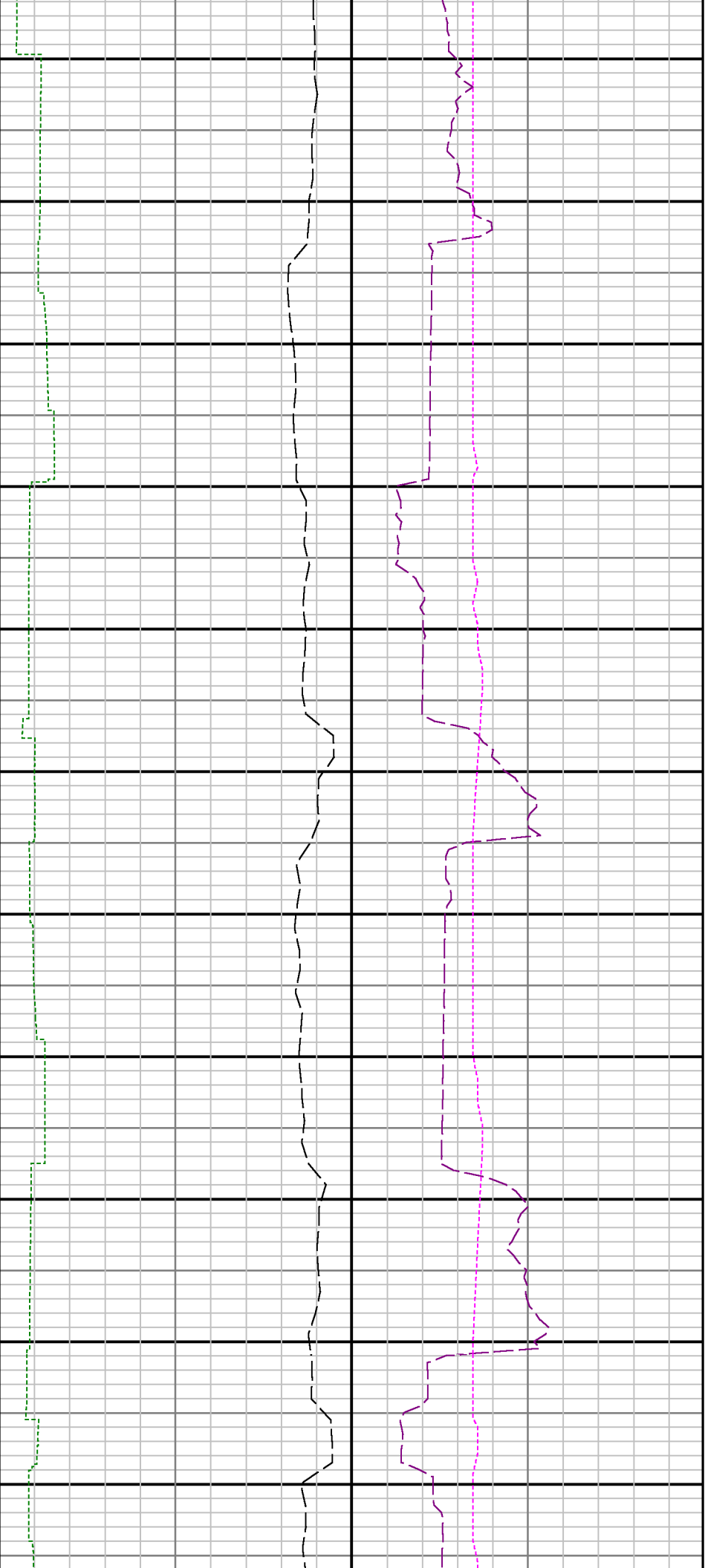
				Company : Kerr-McGee Oil & Gas Onshore LP			
				Well : Bella Federal 15N-7HZ			
				Interval : 6400.00 - 11900.00 feet			
				Created : 20/Aug/2013 8:28:25 AM			
Gamma Ray Apparent 0.5 ft Avg [GRAX]		MD feet 1:240	Rate of Penetration 3.0 ft Avg [ROPA]		Surface Weight On Bit 1.0 ft Avg [WOBA]		
0 150			1000 0		0 100		
API			ft/hr		klbf		
True Vertical Depth [TVD]			Gamma Ray Time Since Drilled [GRTX]		Downhole Temperature [TCDX]		
7000 6000		6400	0 600		100 300		
ft			min		degF		

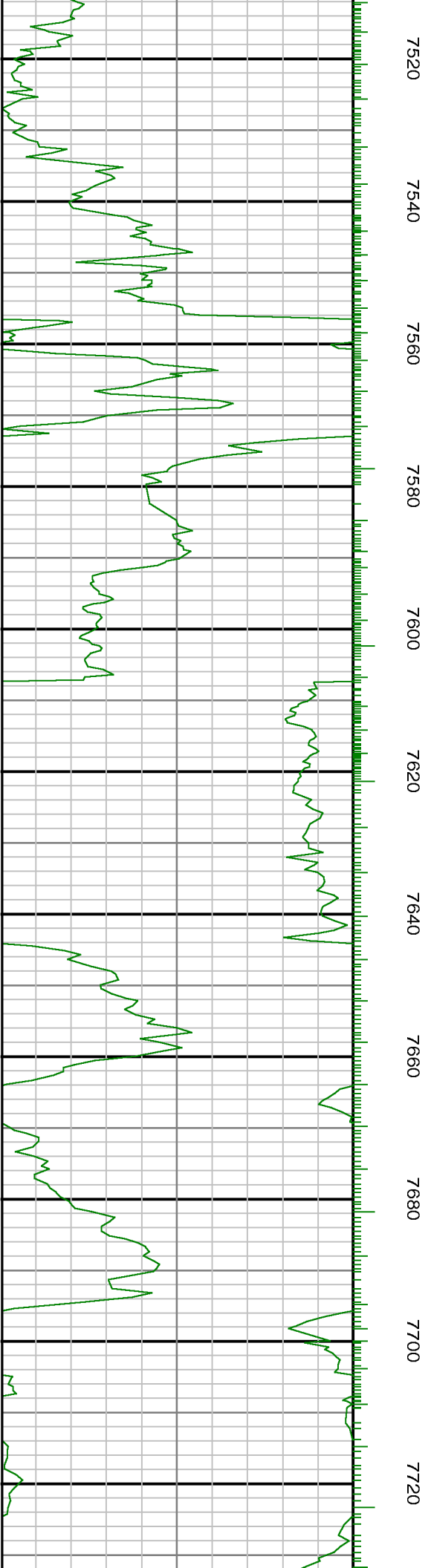
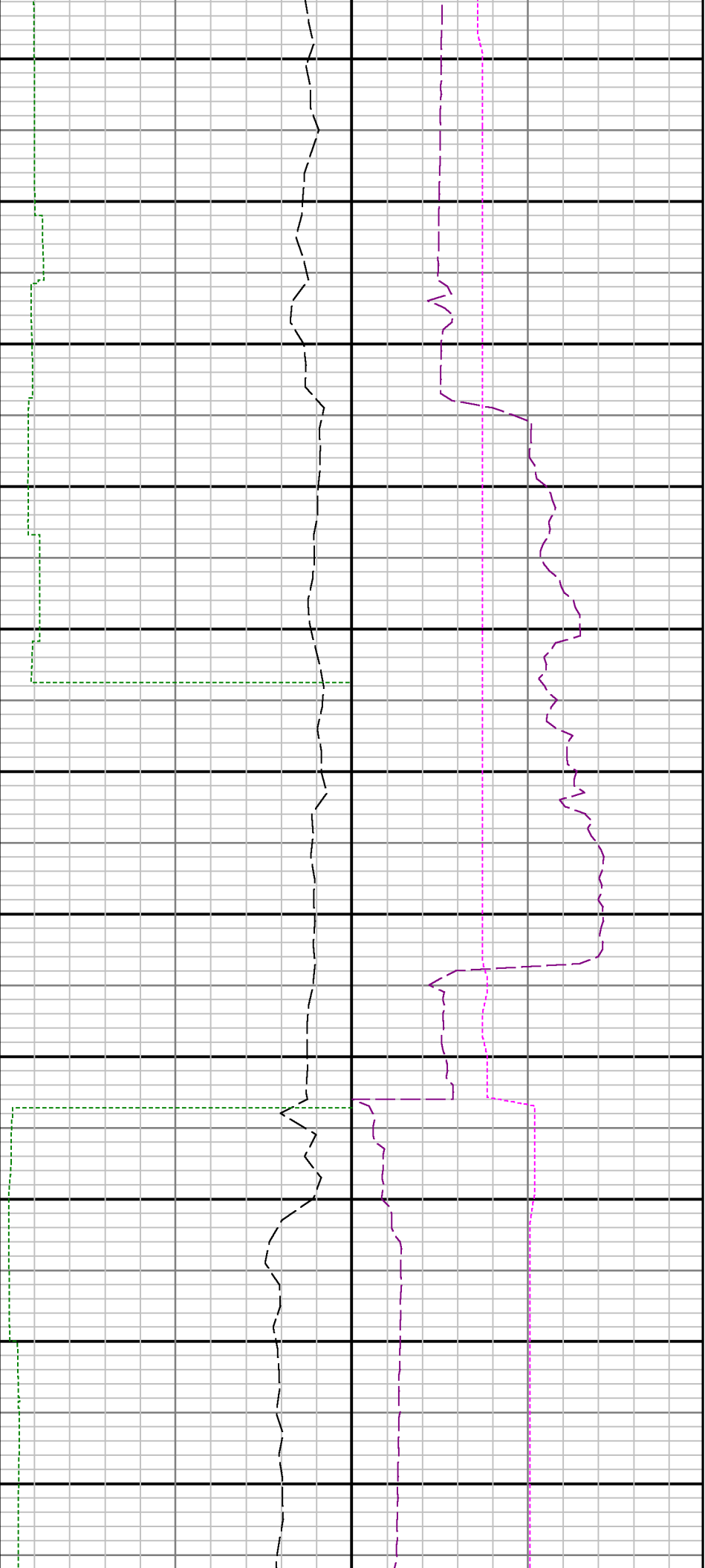


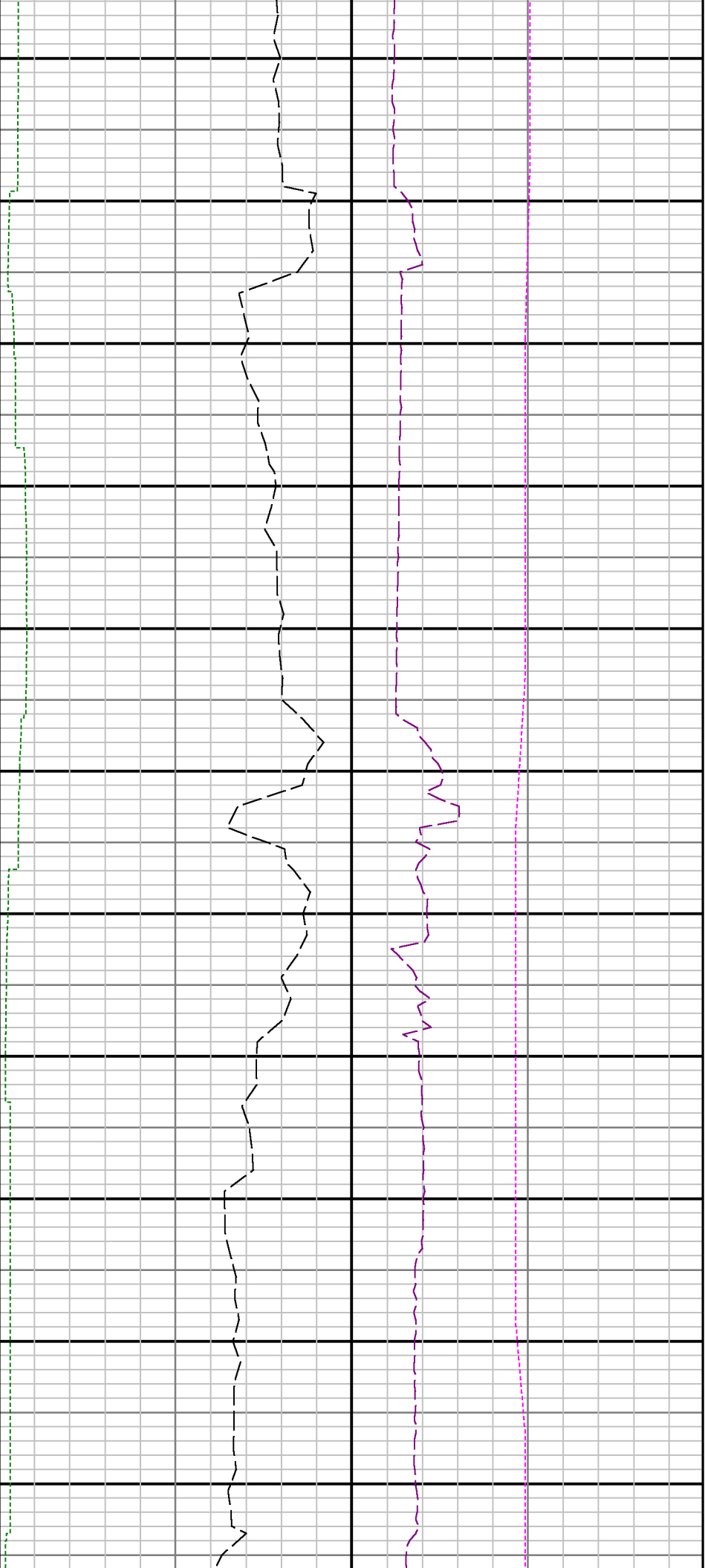


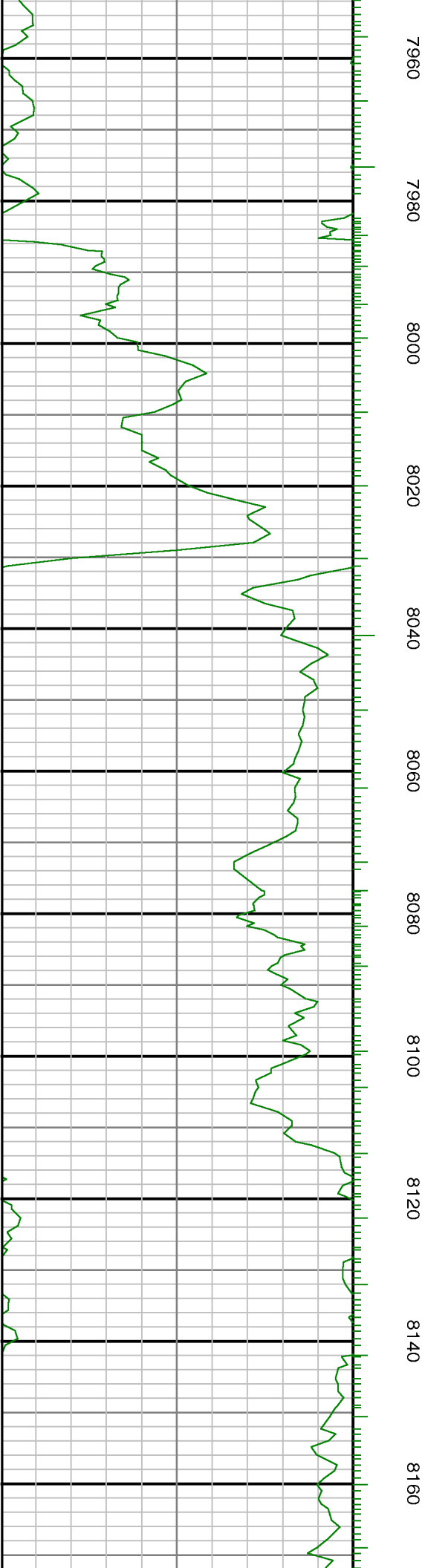
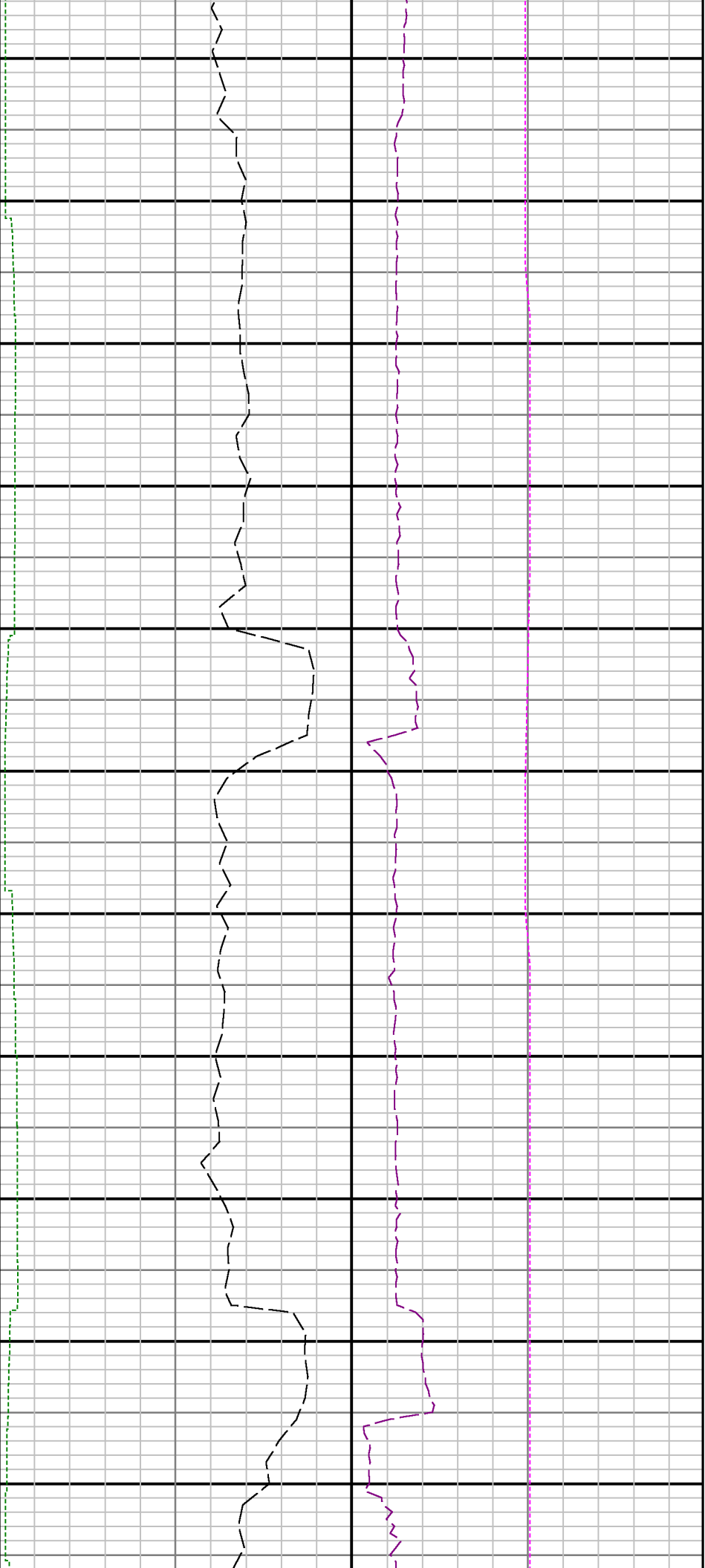


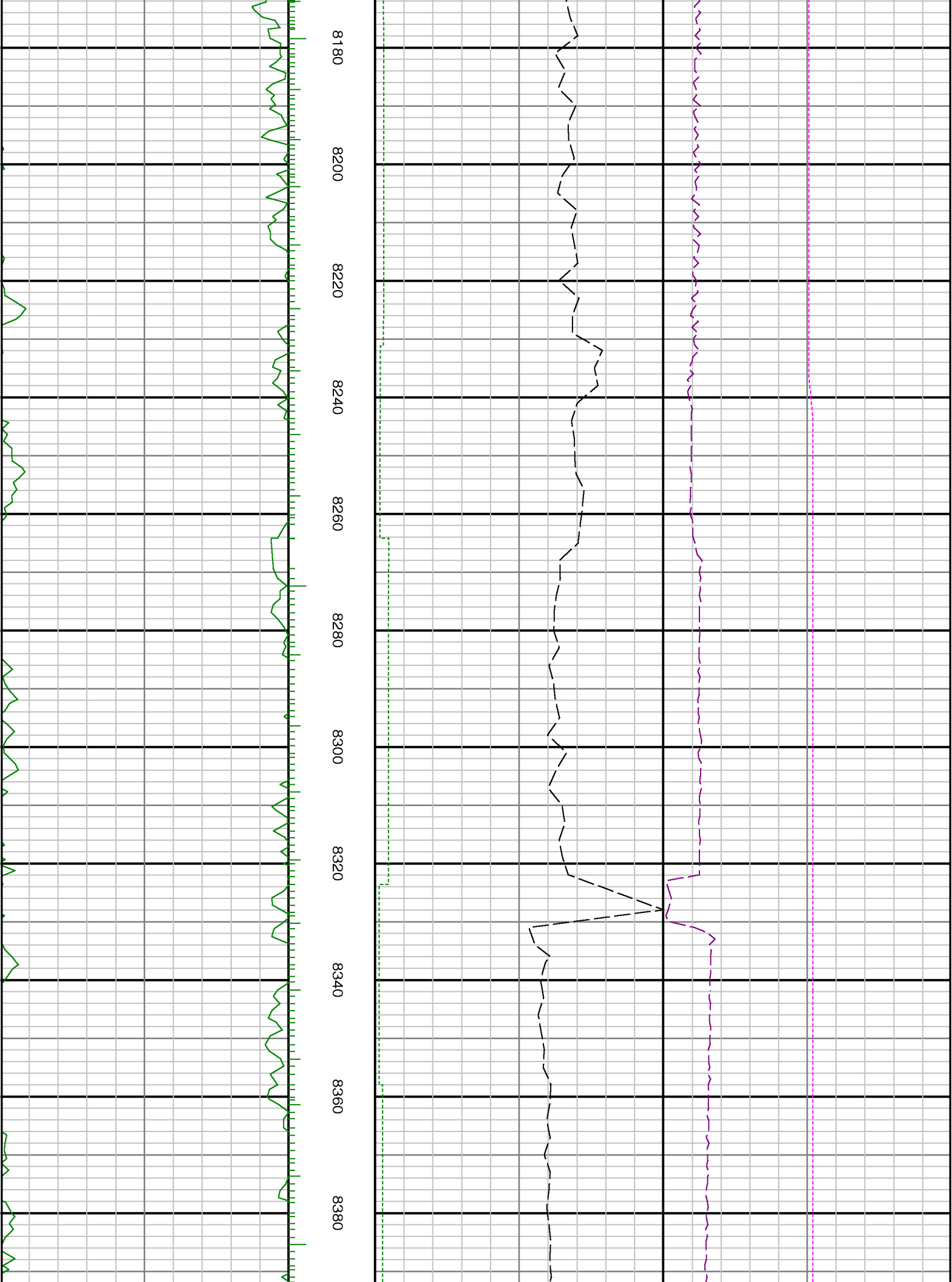


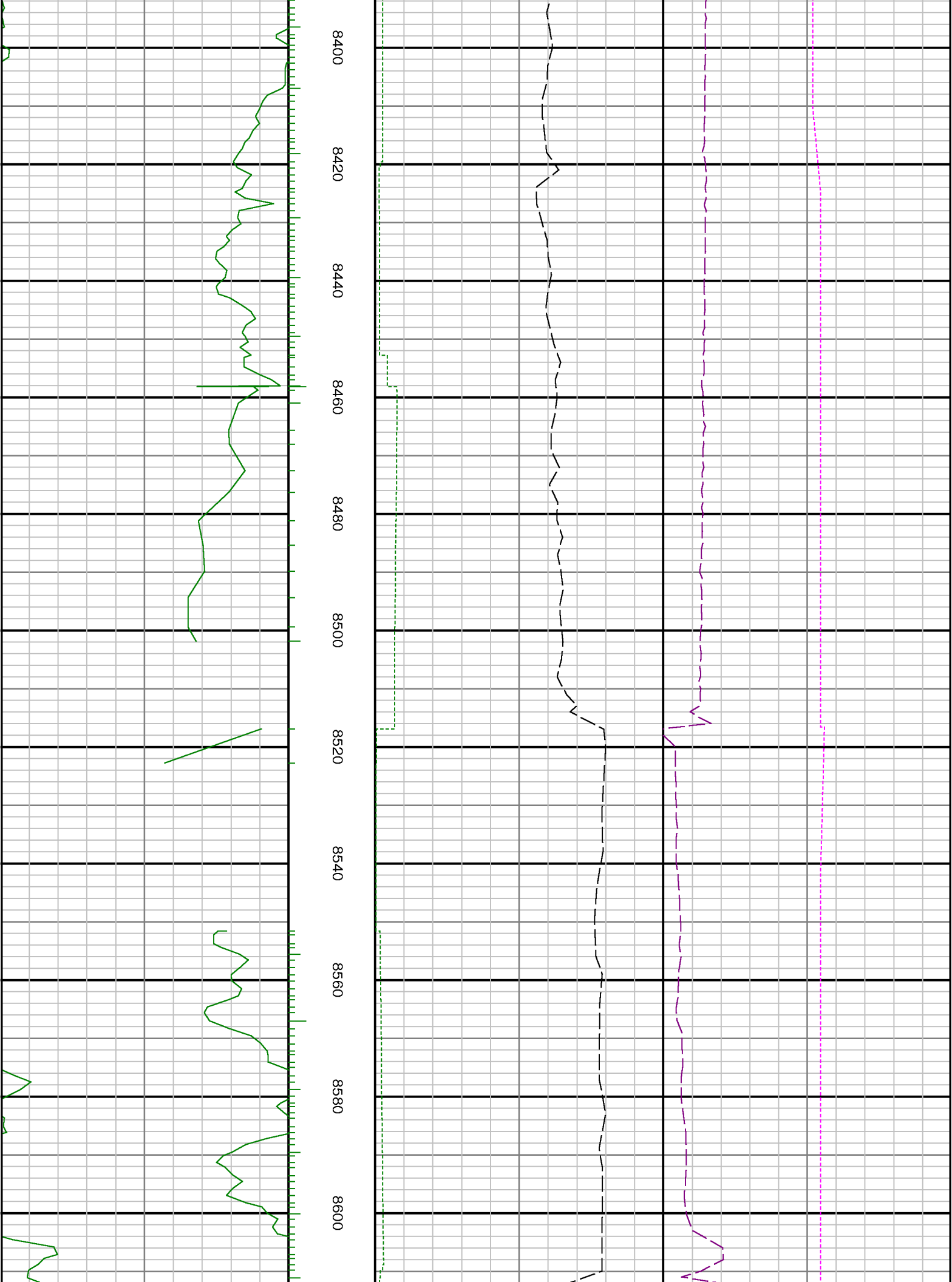


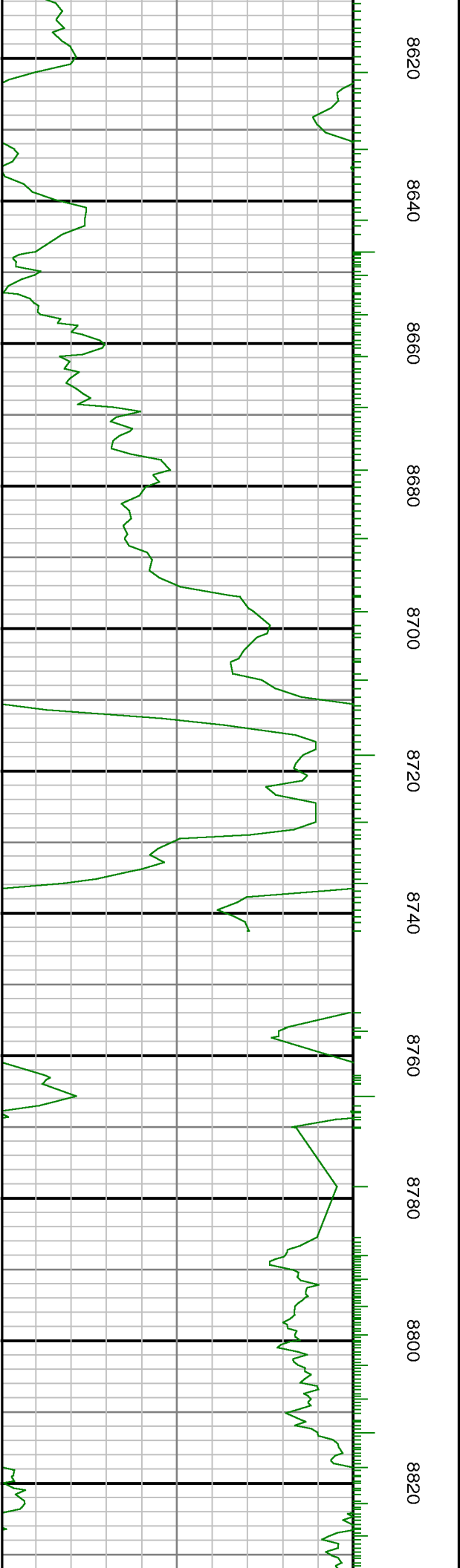
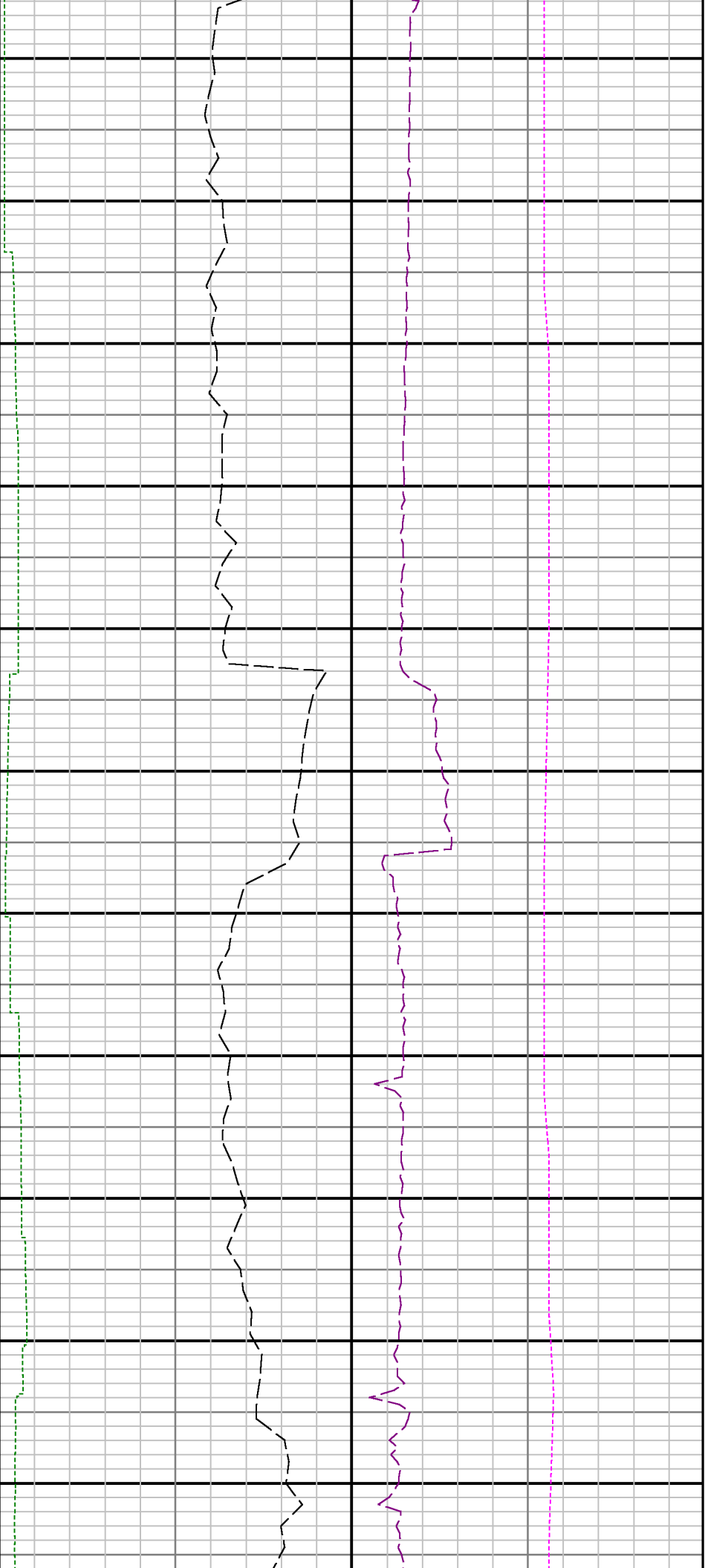


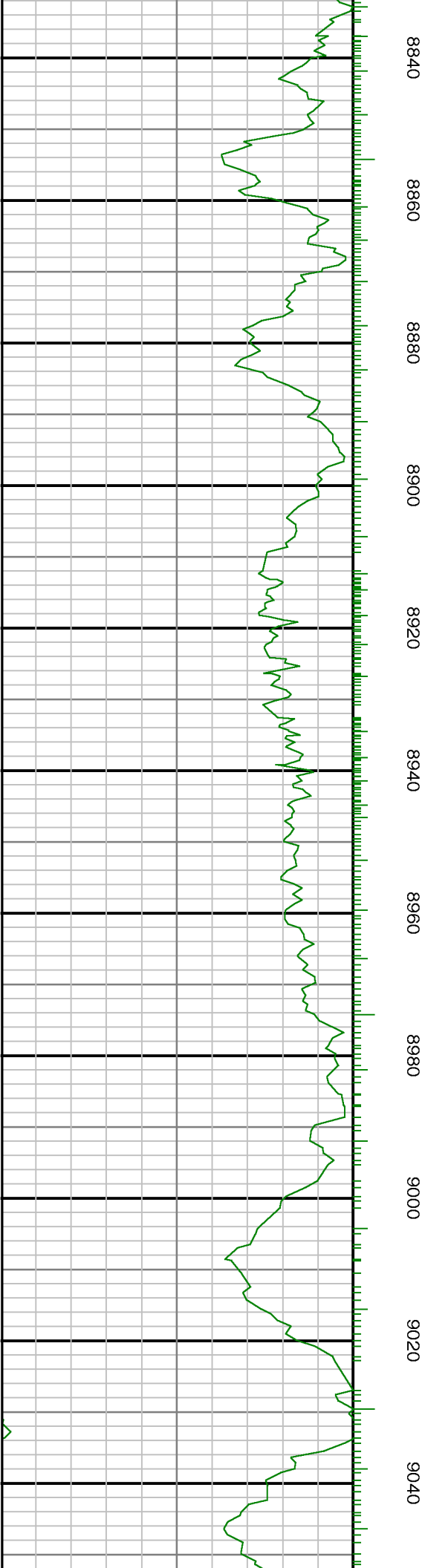


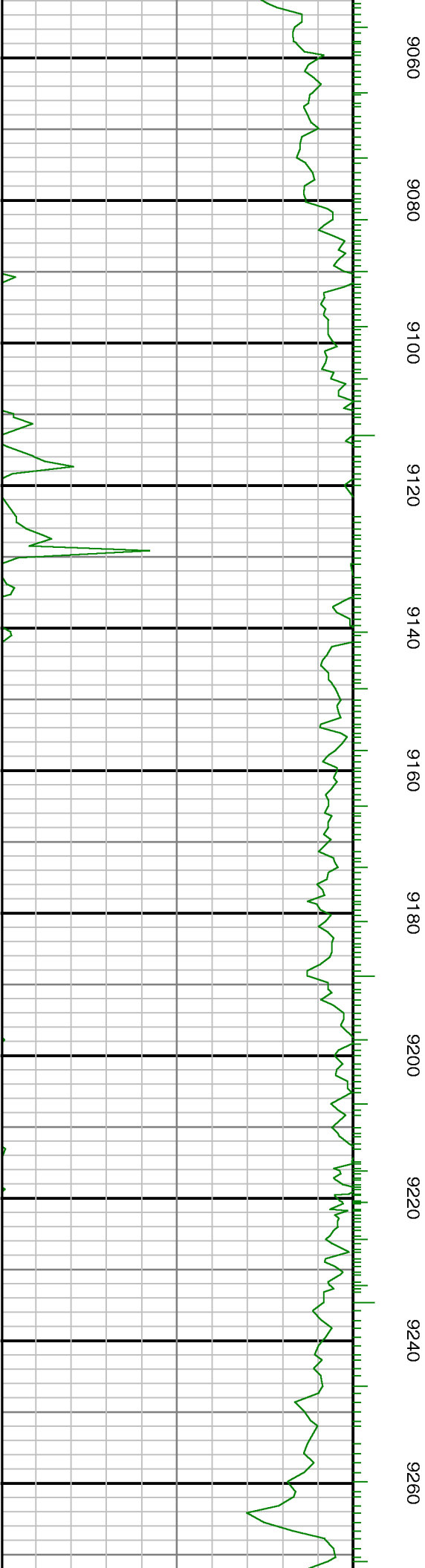
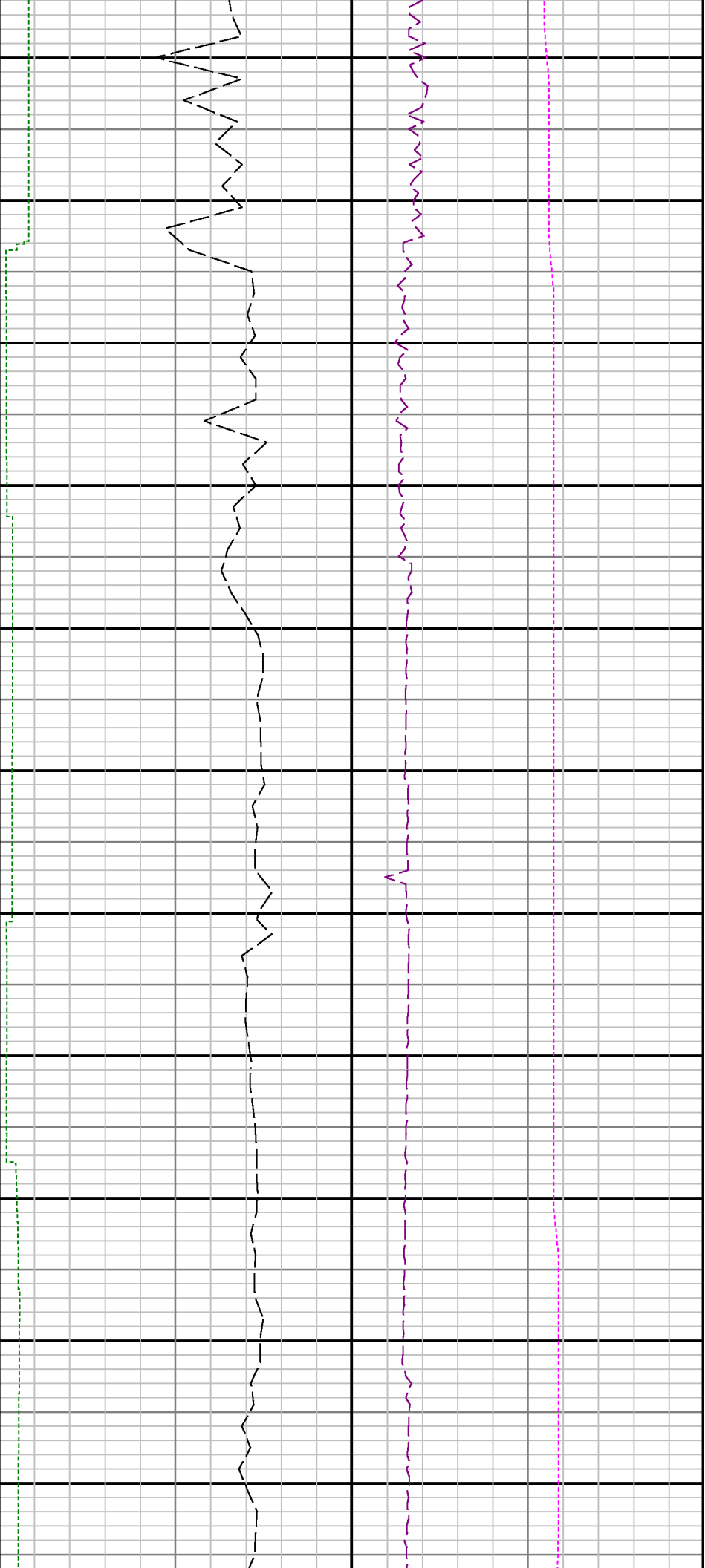


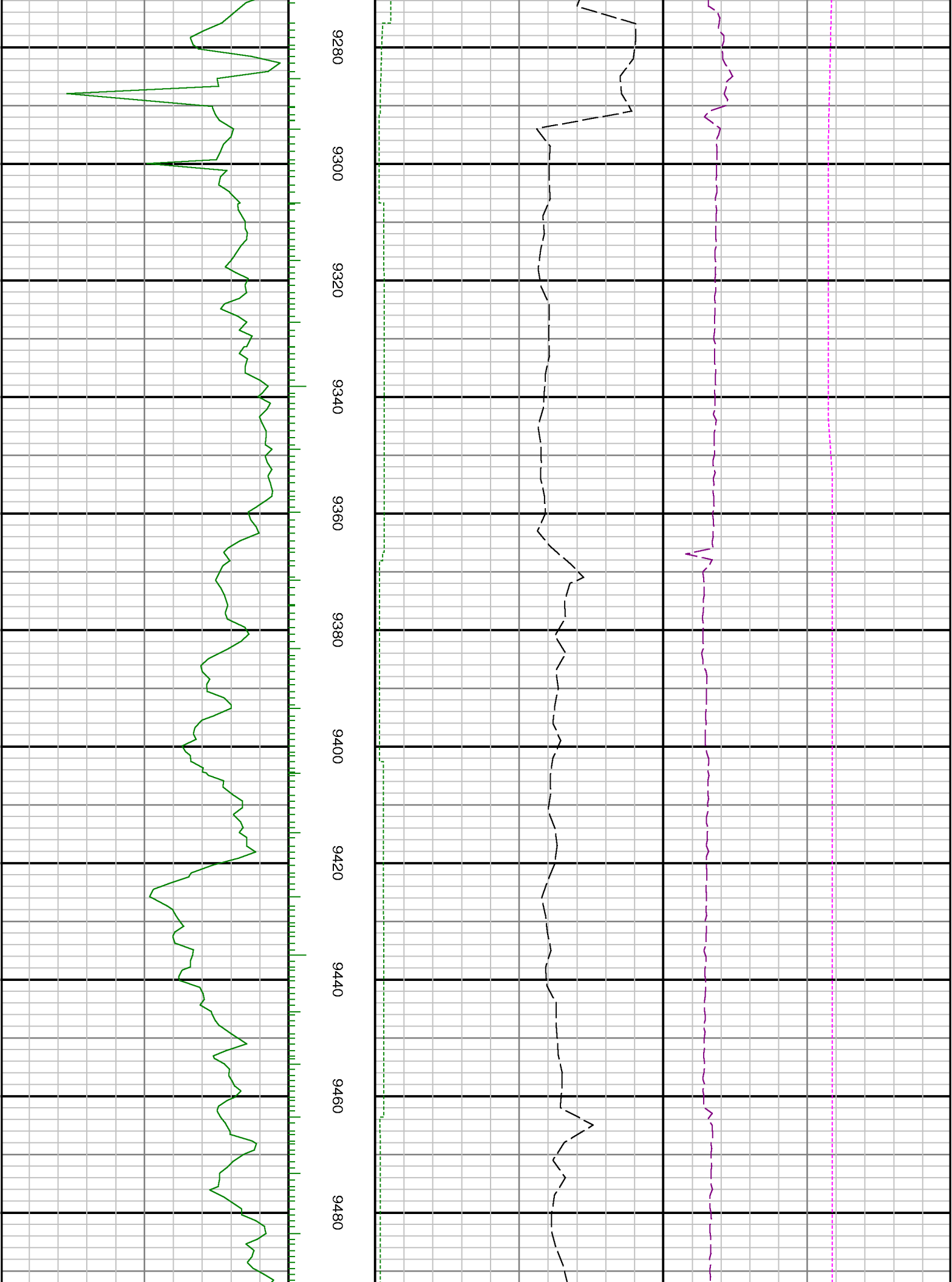


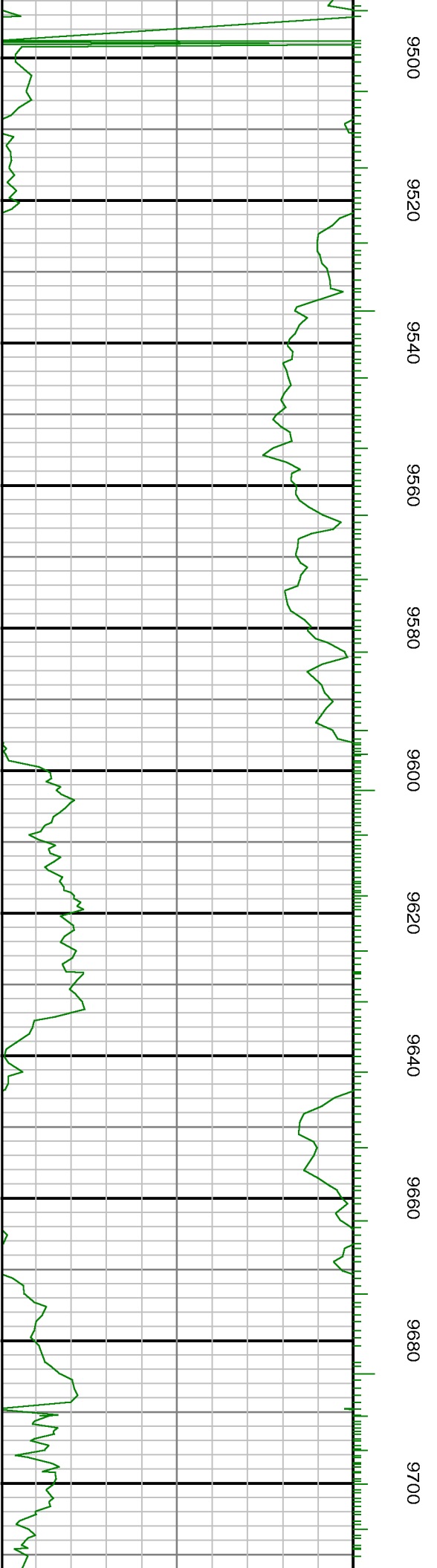
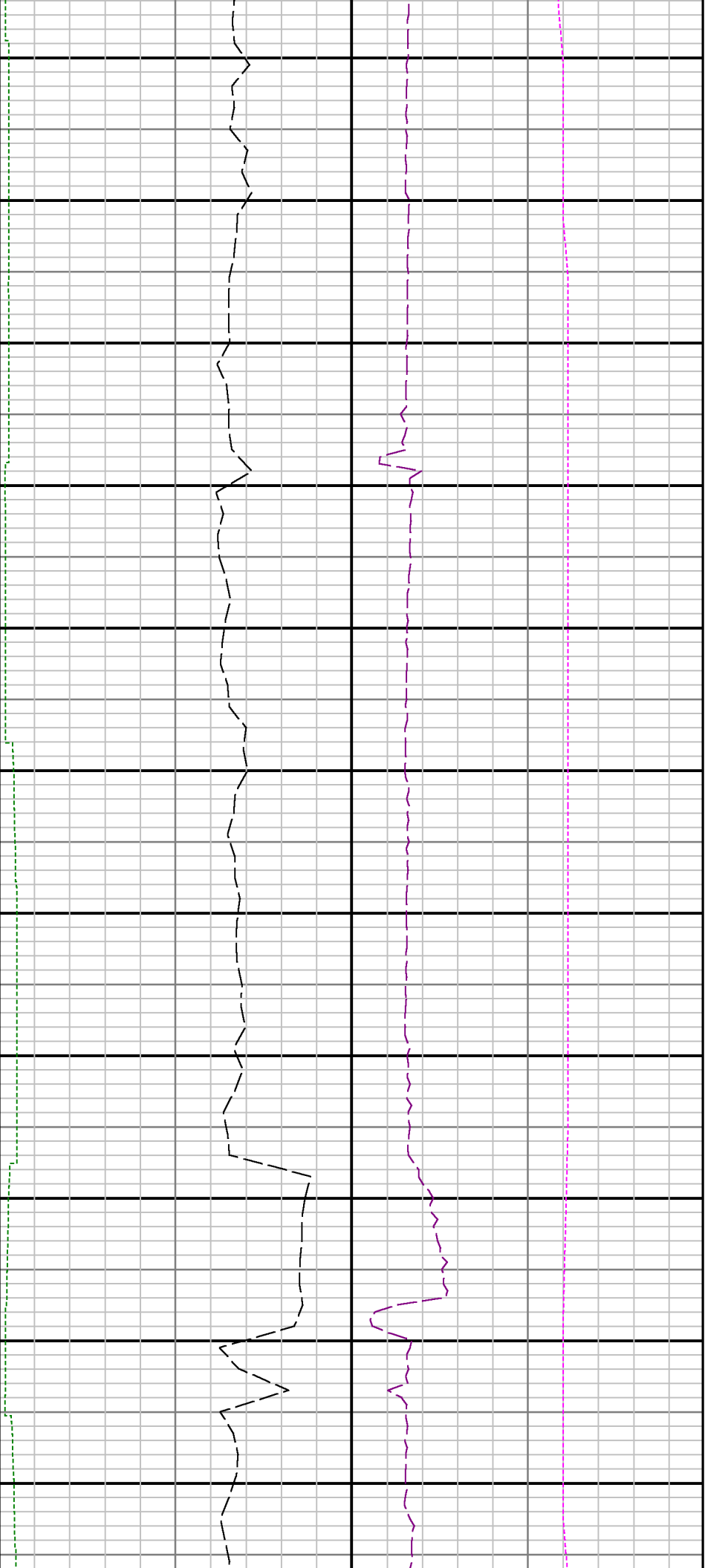


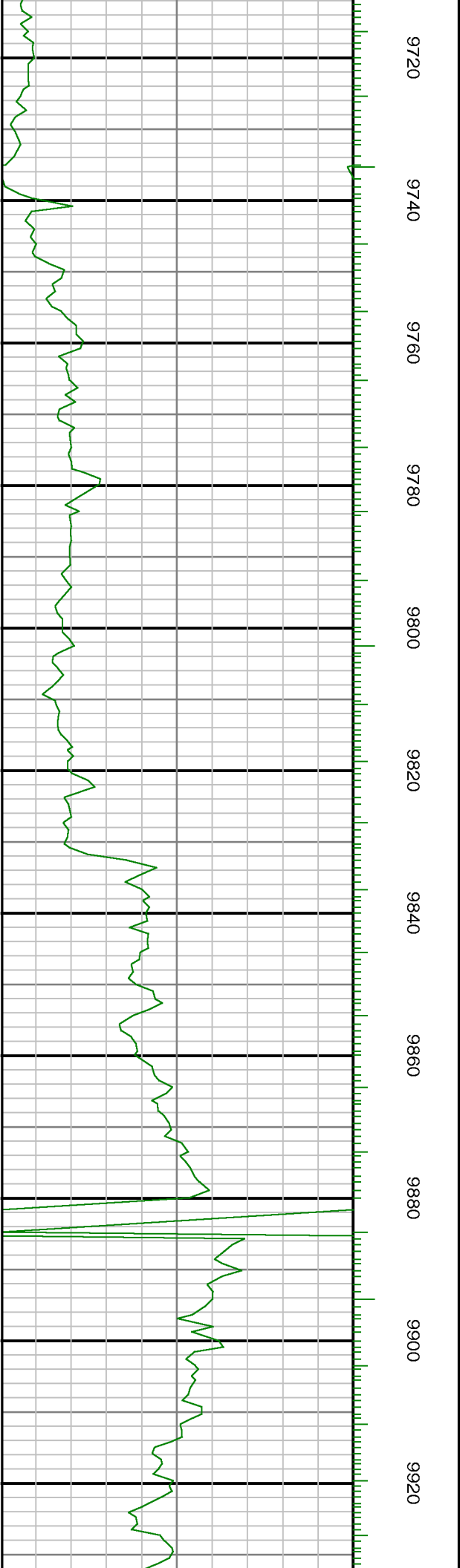
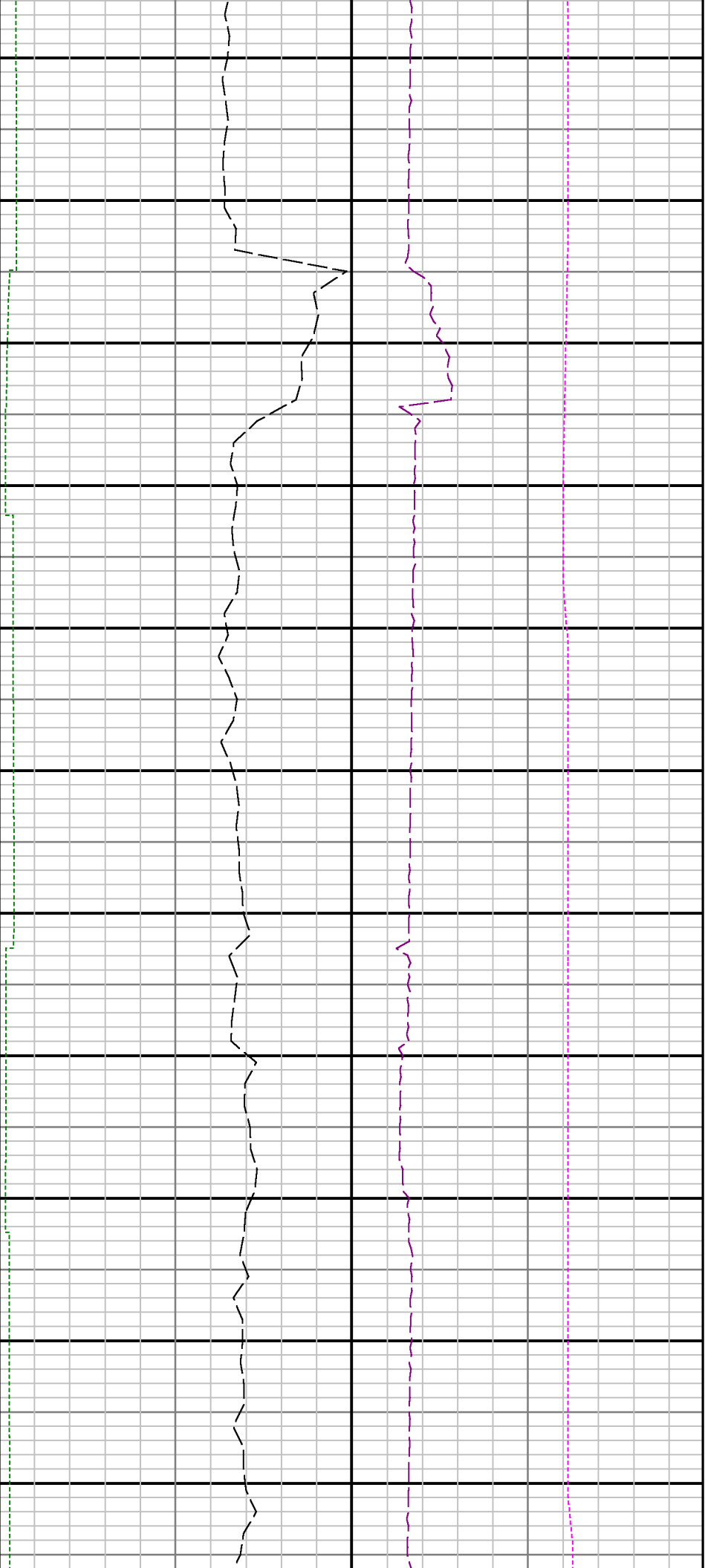


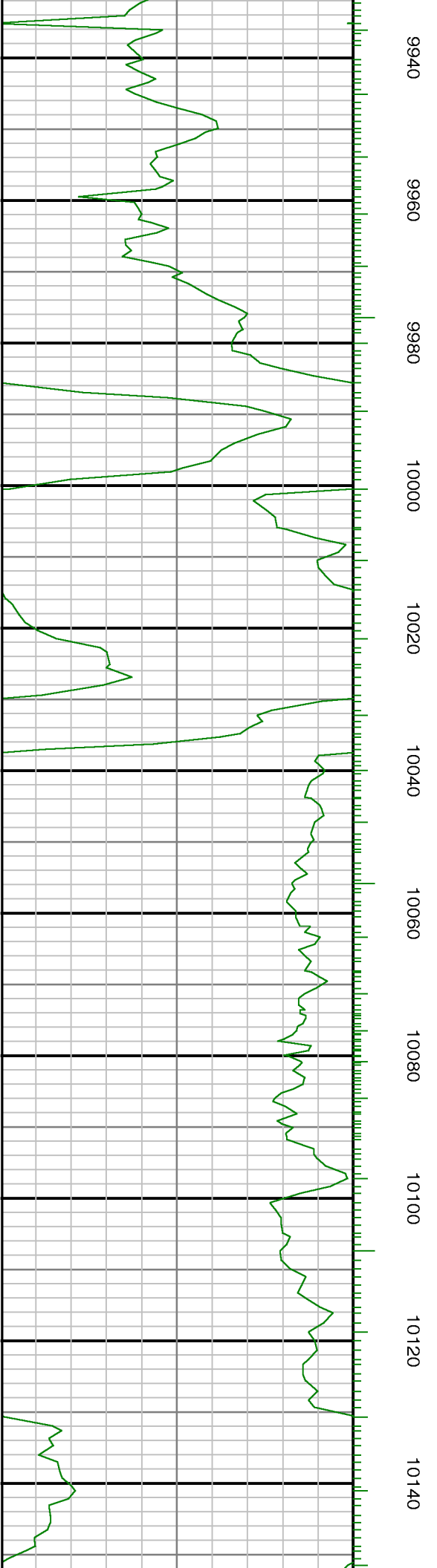
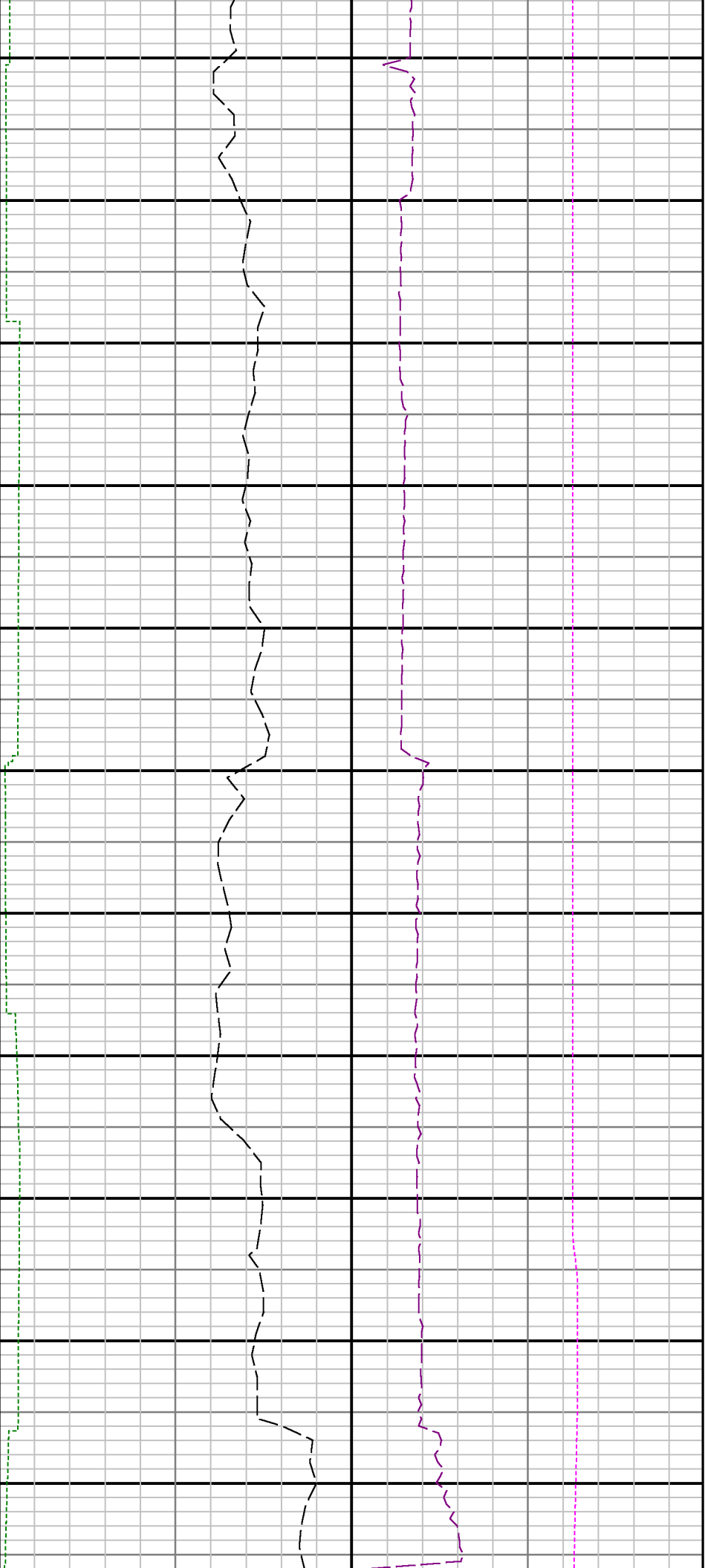


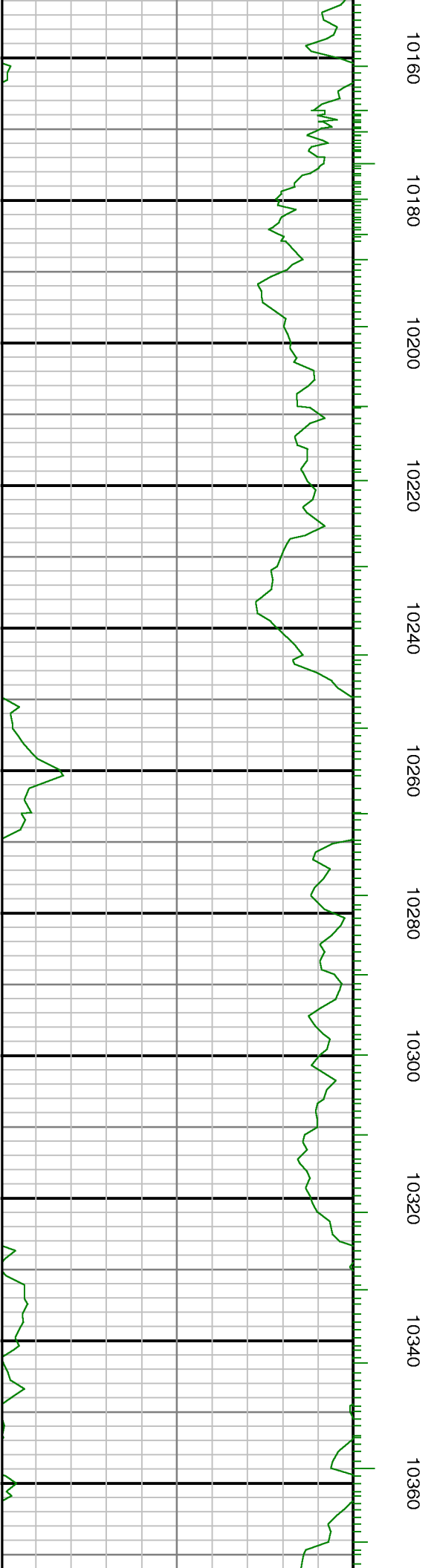
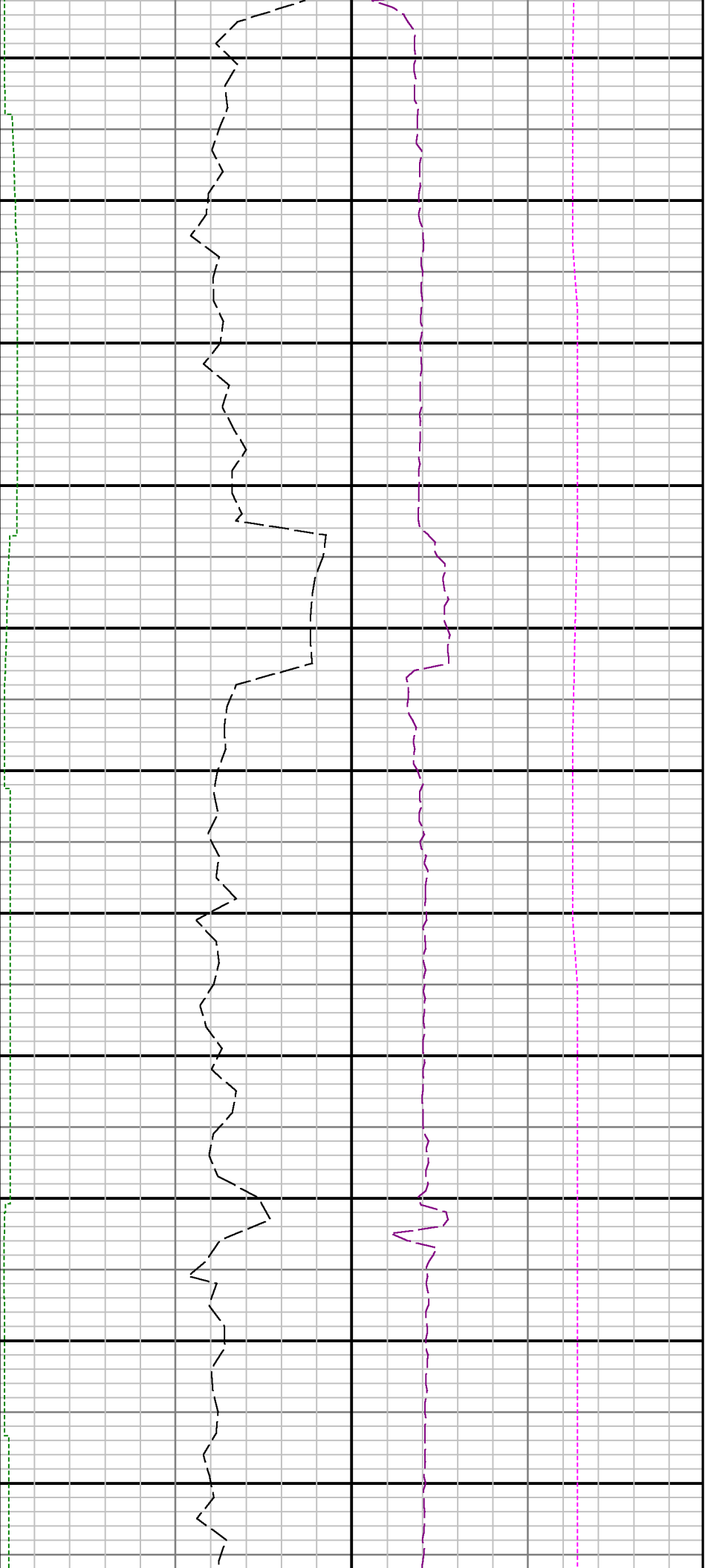


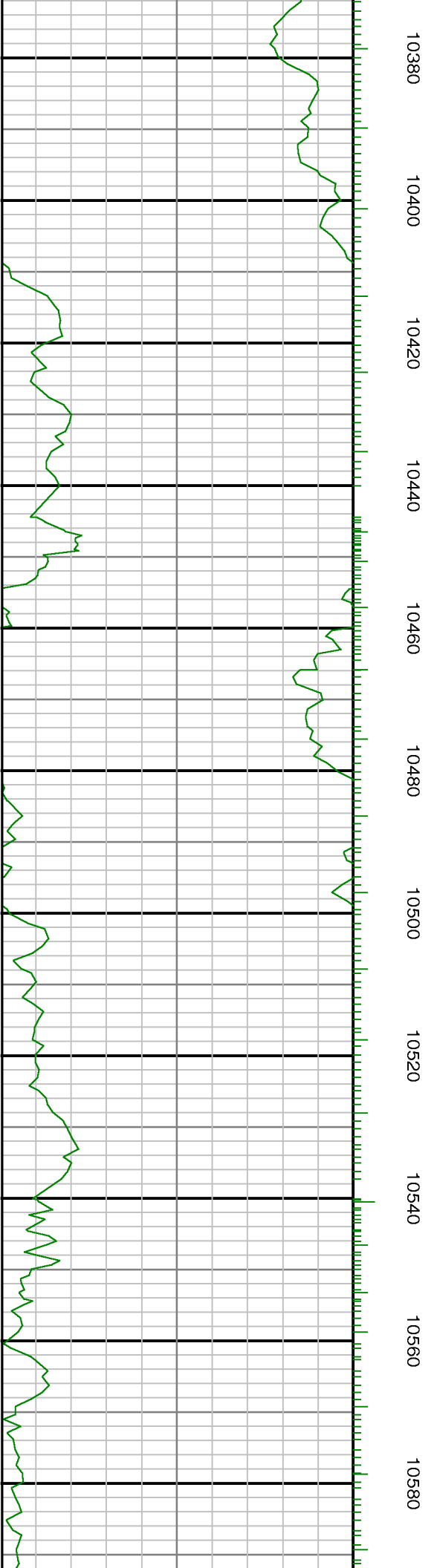
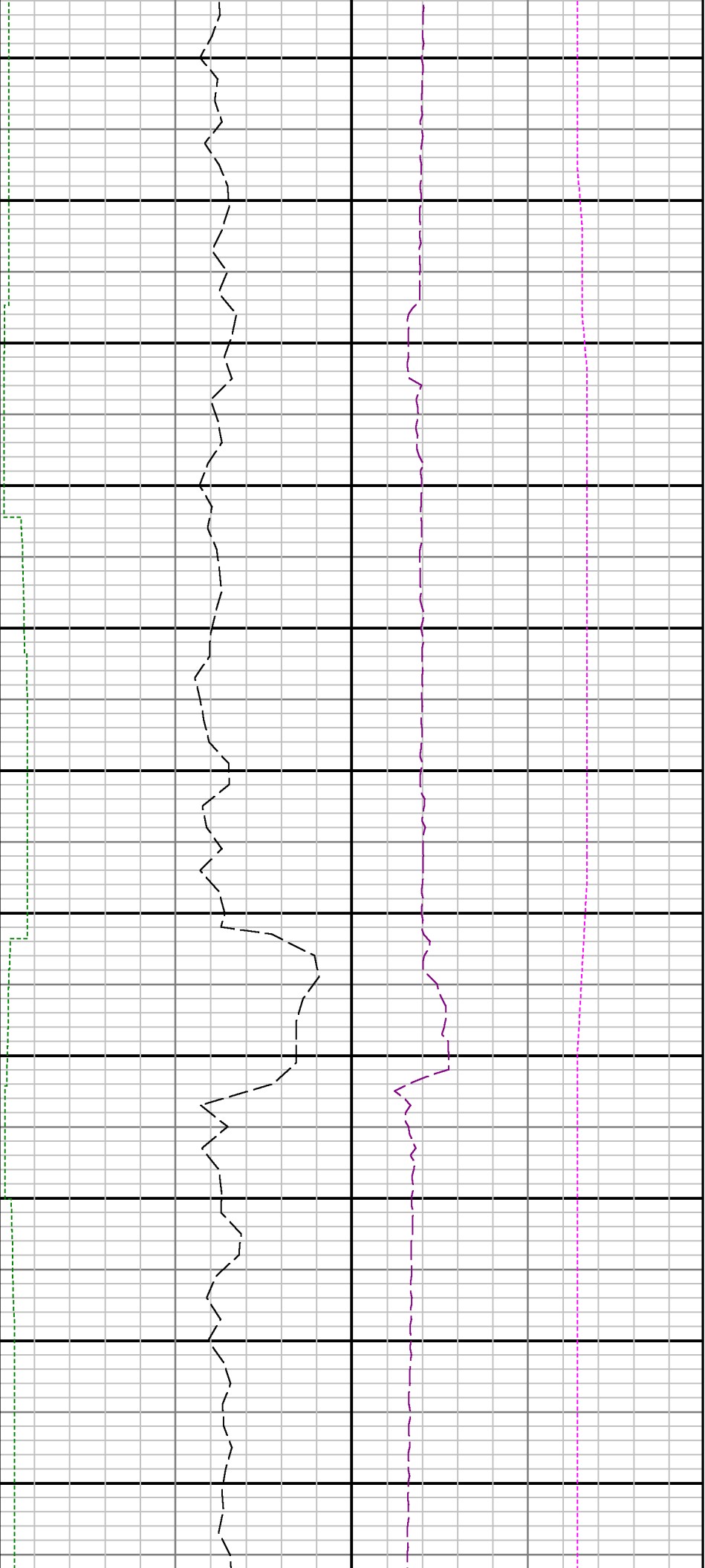


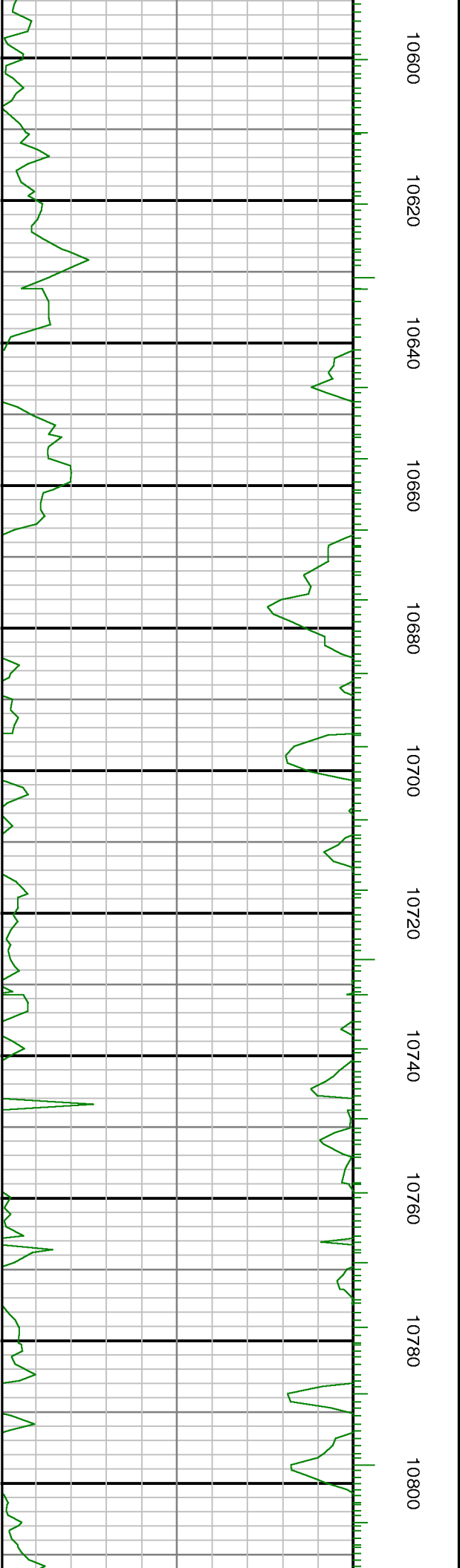
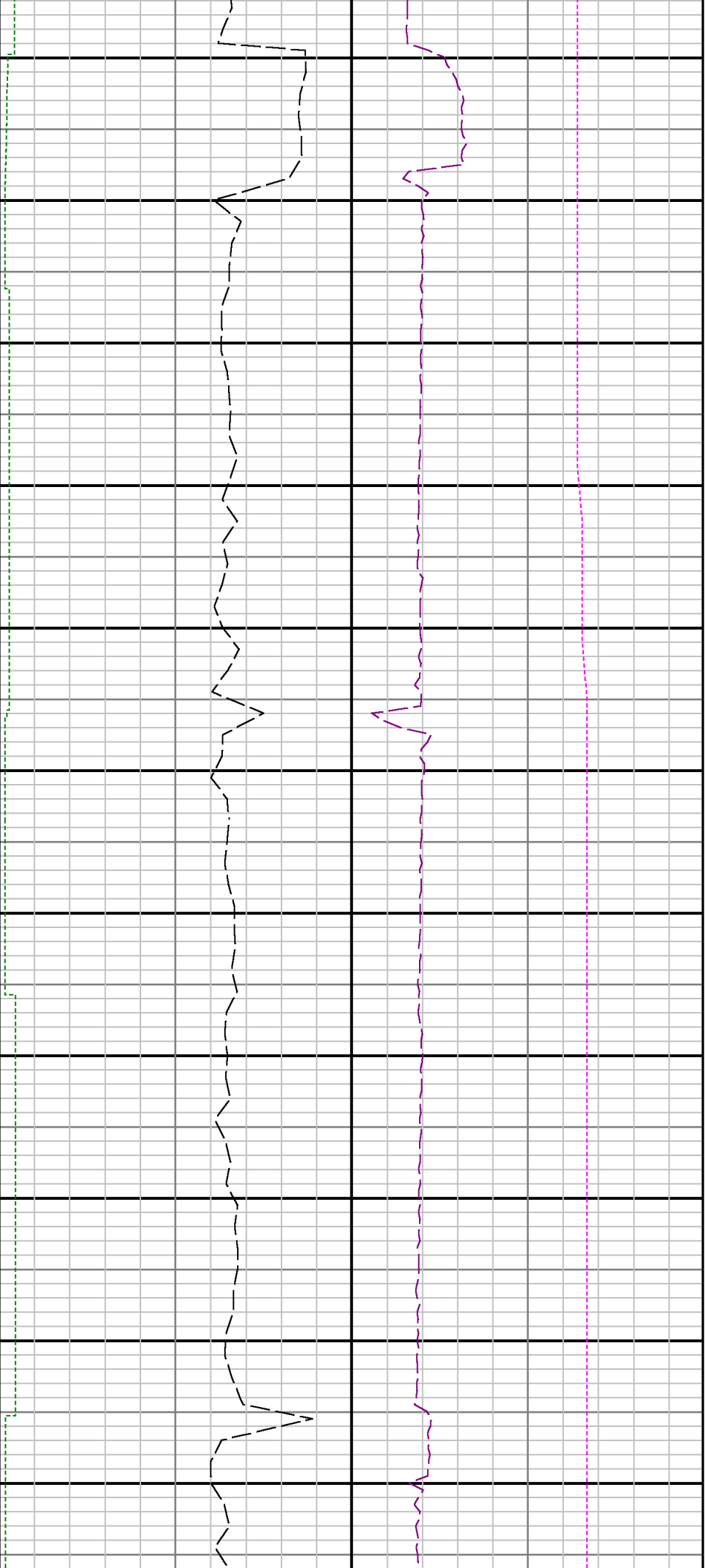


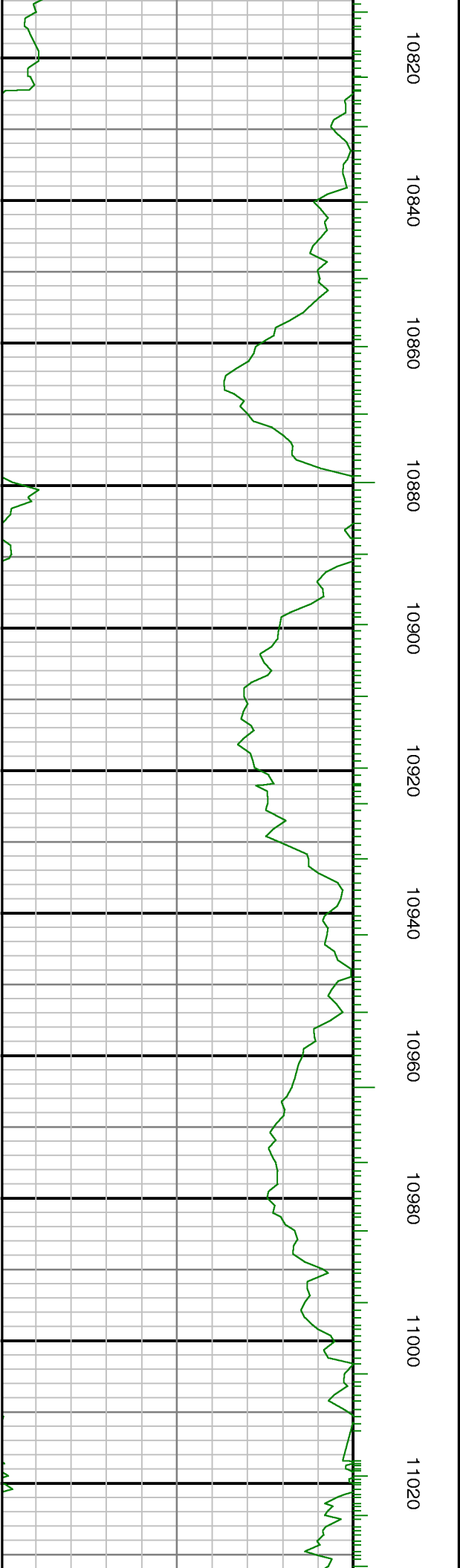
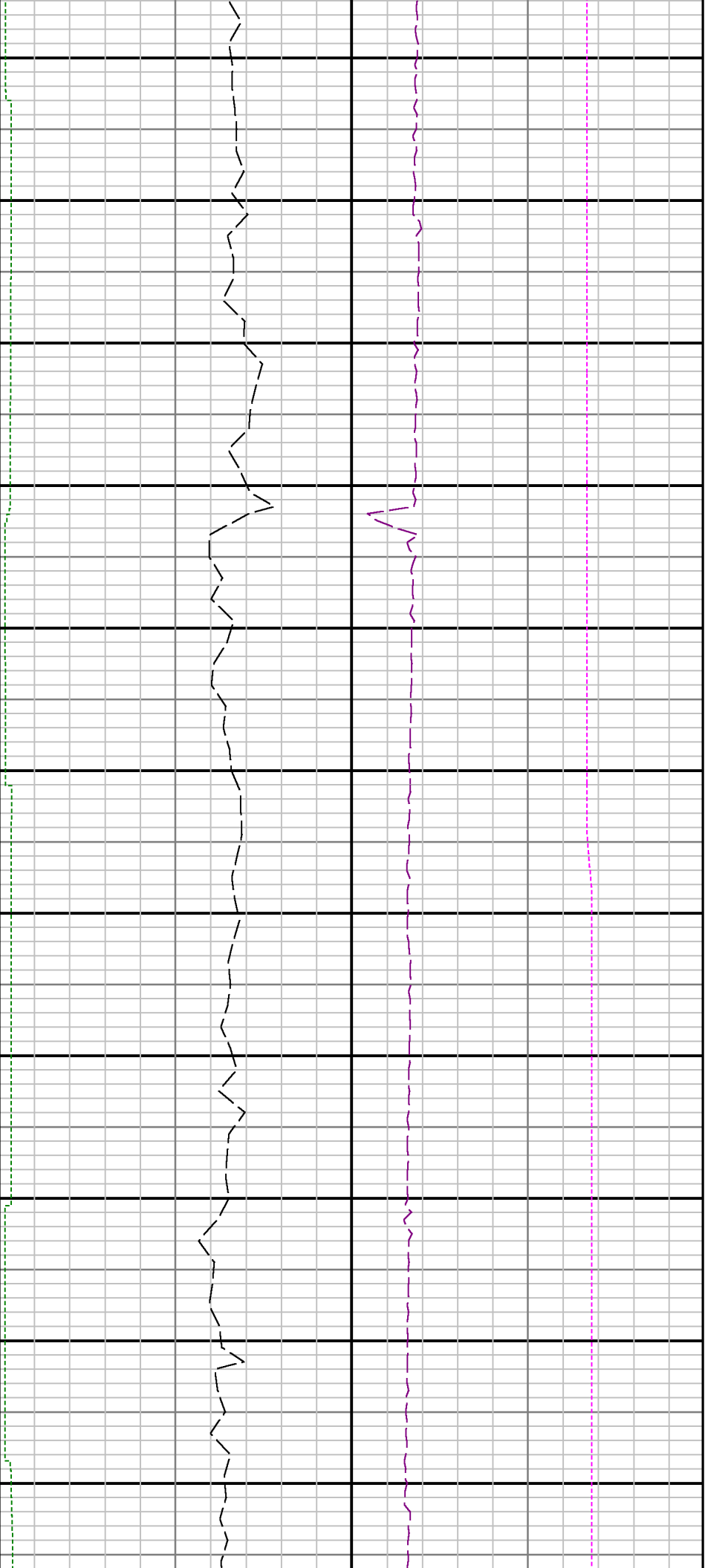


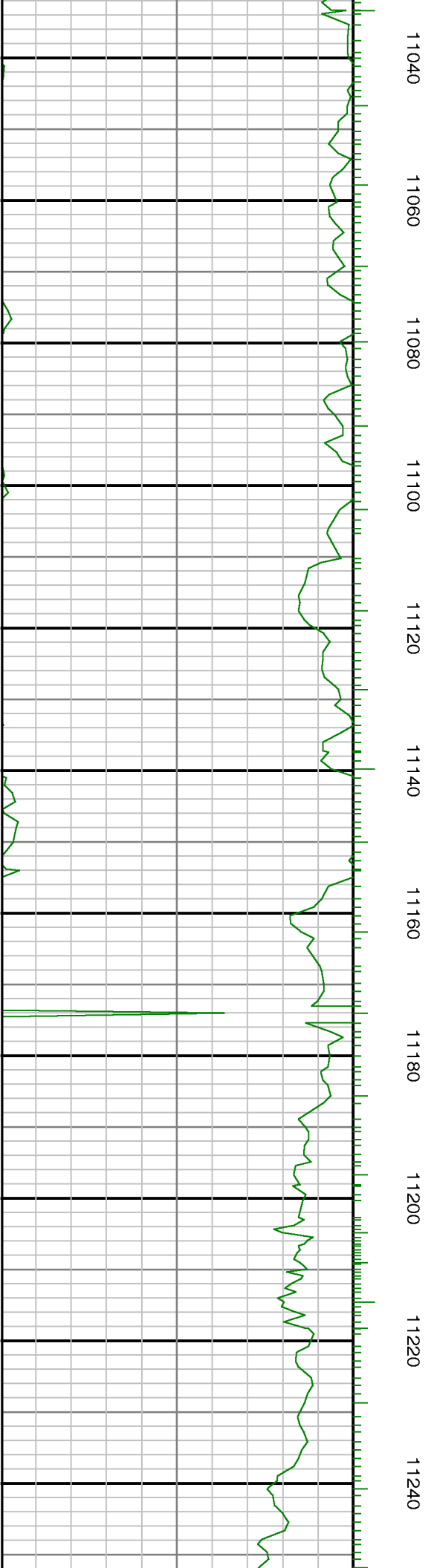




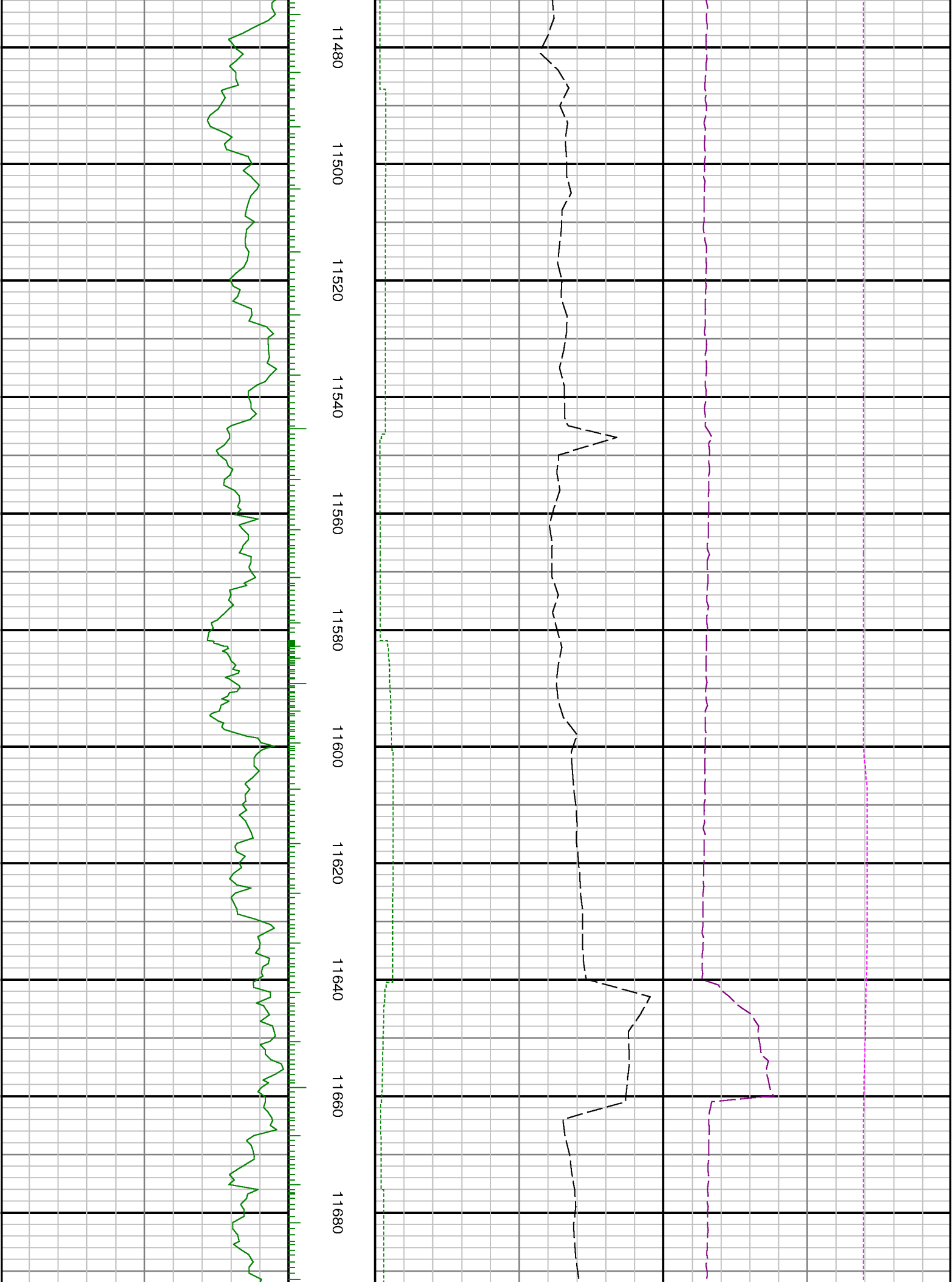


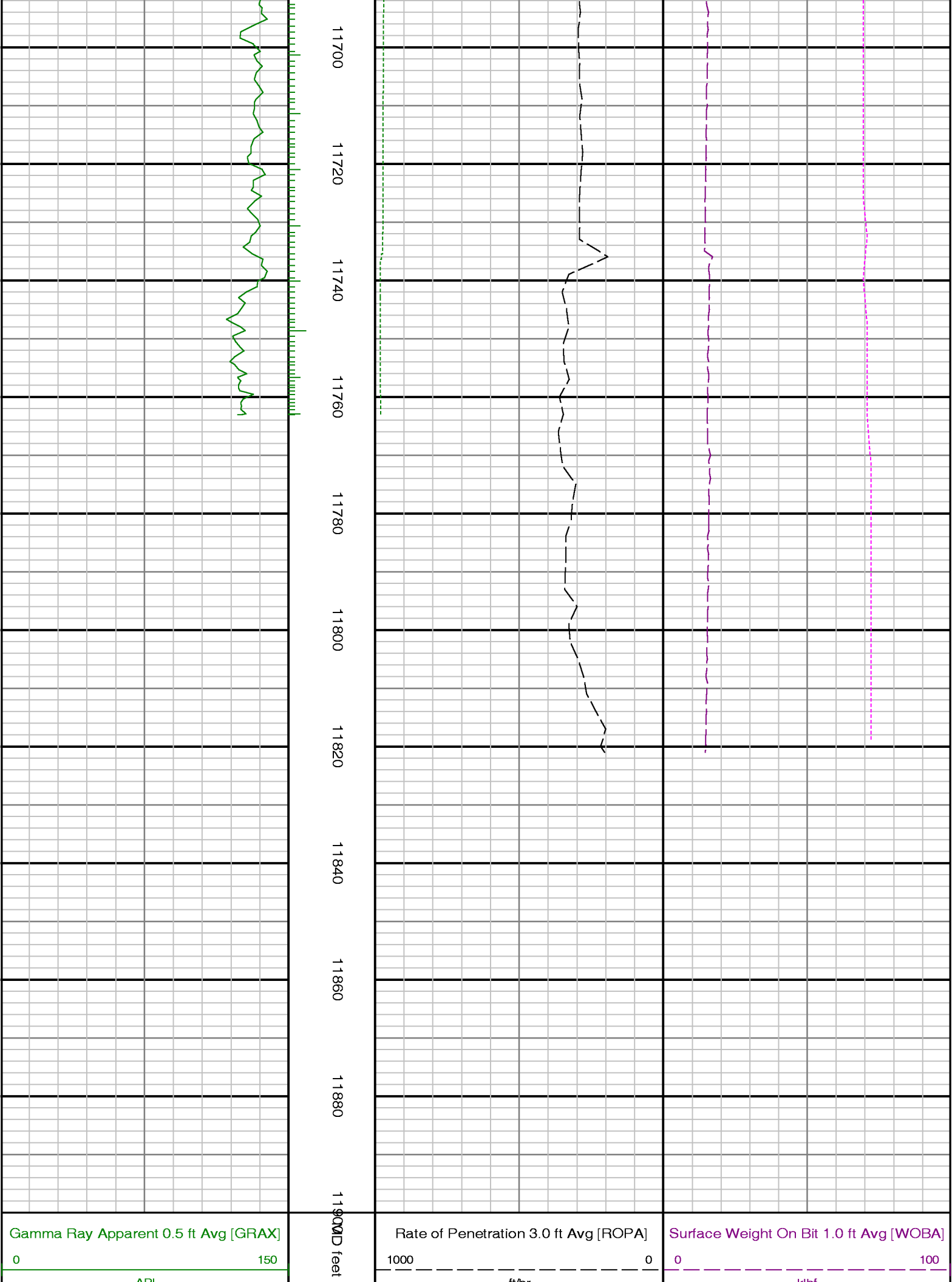












<div>API</div> <div>True Vertical Depth [TVD]</div> <div>70006000</div> <div>ft</div>	<div>1:240</div>	<div>Gamma Ray Time Since Drilled [GRTX]</div> <div>0600</div> <div>min</div>	<div>Downhole Temperature [TCDX]</div> <div>100300</div> <div>degF</div>
---	------------------	---	--