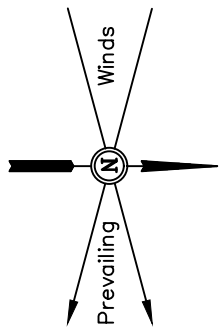
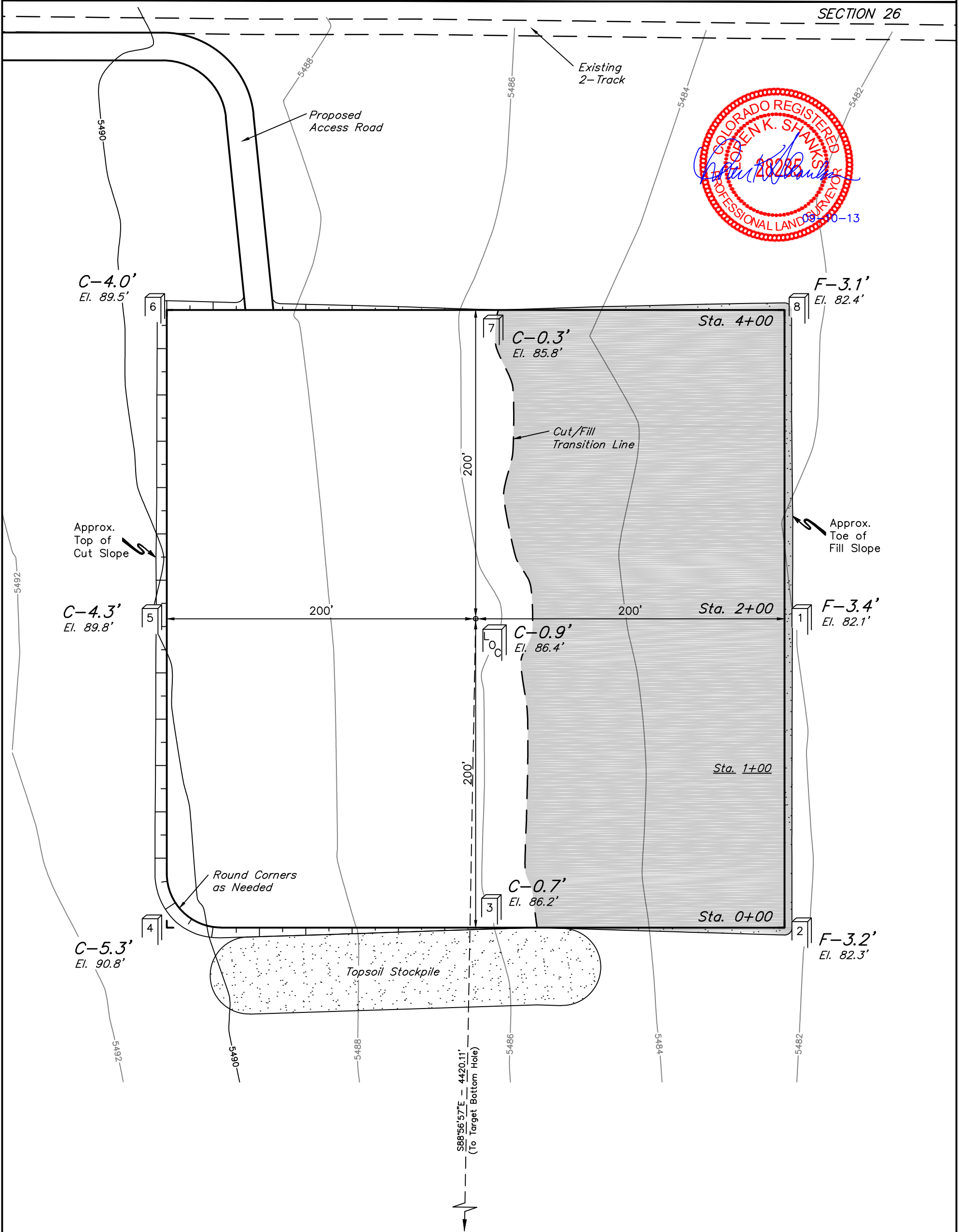


ConocoPhillips Company
CONSTRUCTION LAYOUT FOR
RESERVE #3-65 26-1H
SECTION 26, T3S, R65W, 6th P.M.
660' FNL 400' FWL

FIGURE #1
SCALE: 1" = 60'
DATE: 08-14-13
DRAWN BY: J.W.
REVISED: 09-09-13
REVISED: 09-10-13



SECTION 27
SECTION 26



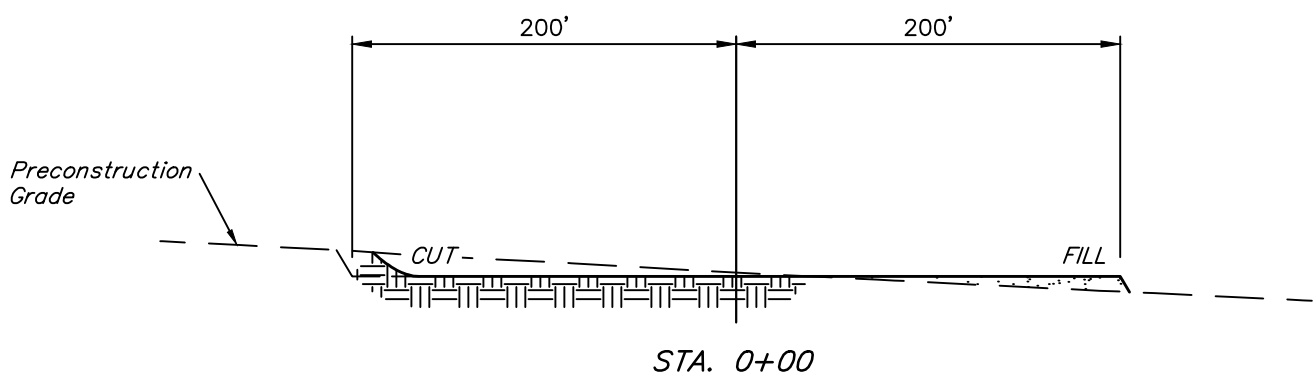
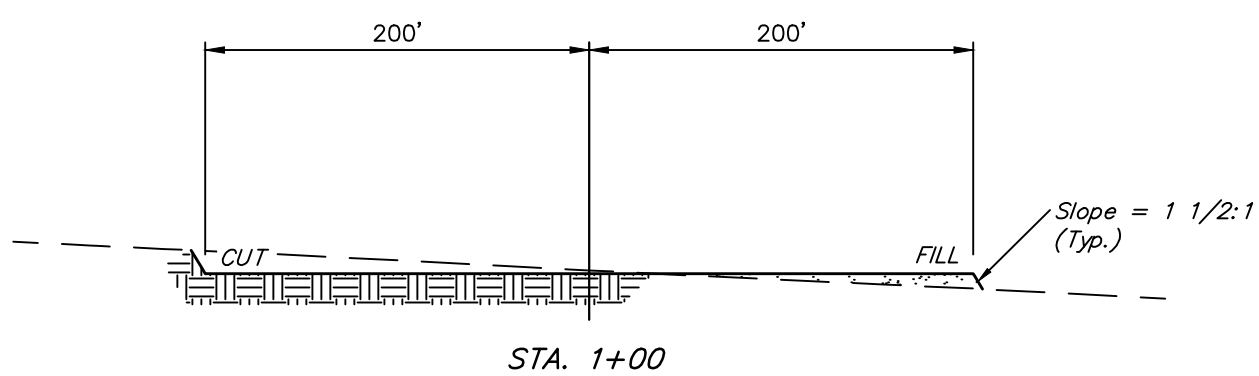
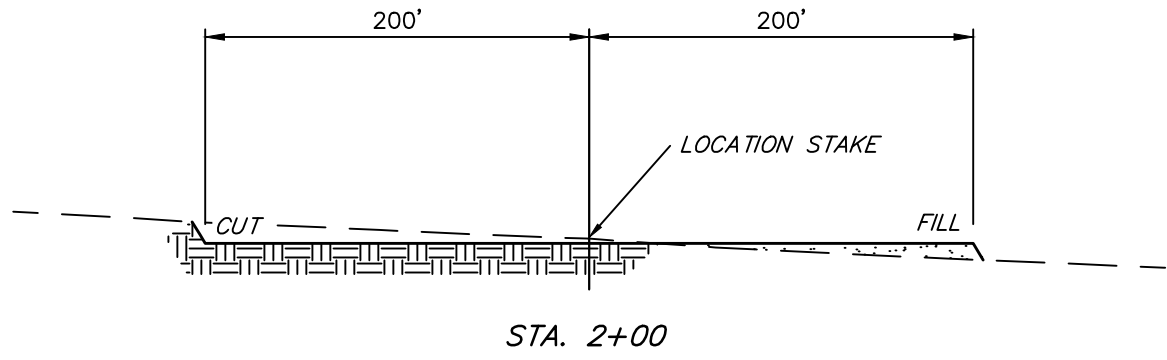
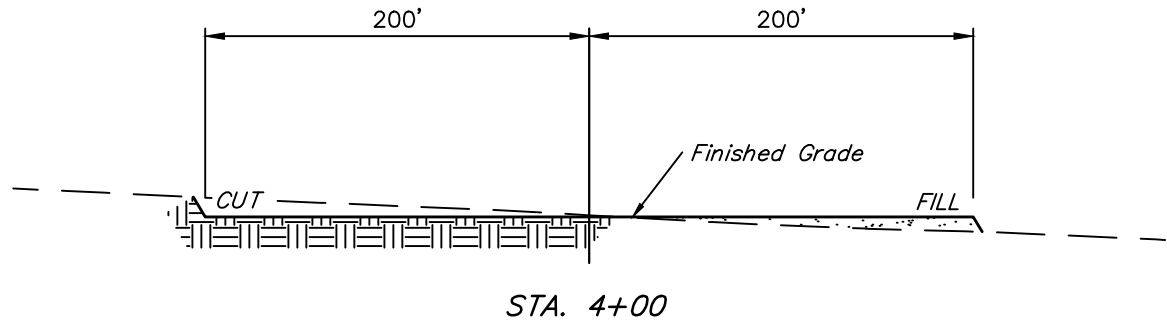
Elev. Ungraded Ground At Loc. Stake = 5486.4'
FINISHED GRADE ELEV. AT LOC. STAKE = 5485.5'

UINTAH ENGINEERING & LAND SURVEYING
85 So. 200 East * Vernal, Utah 84078 * (435) 789-1017

1" = 40'
X-Section
Scale
1" = 100'
DATE: 08-14-13
DRAWN BY: J.W.
REVISED: 09-09-13

ConocoPhillips Company
CONSTRUCTION LAYOUT CROSS SECTIONS FOR
RESERVE #3-65 26-1H
SECTION 26, T3S, R65W, 6th P.M.
660' FNL 400' FWL

FIGURE #2



NOTE:
Topsoil should not be
Stripped Below Finished
Grade on Substructure Area.

* NOTE:
FILL QUANTITY INCLUDES
10% FOR COMPACTION

APPROXIMATE YARDAGES

(6") Topsoil Stripping	=	3,090 Cu. Yds.
Remaining Location	=	6,390 Cu. Yds.
TOTAL CUT	=	9,480 CU. YDS.
FILL	=	6,390 CU. YDS.

EXCESS MATERIAL	=	3,090 Cu. Yds.
Topsoil	=	3,090 Cu. Yds.
EXCESS UNBALANCE	=	0 Cu. Yds.
(After Interim Rehabilitation)		

APPROXIMATE ACREAGE	
WELL SITE DISTURBANCE	= ± 4.111 ACRES
ACCESS ROAD DISTURBANCE	= ± 3.191 ACRES
TOTAL	= ± 7.302 ACRES

UINTAH ENGINEERING & LAND SURVEYING
85 So. 200 East * Vernal, Utah 84078 * (435) 789-1017