

# LEGEND:

 PROPOSED LOCATION



ConocoPhillips Company

RESERVE #3-65 26-1H  
SECTION 26, T3S, R65W, 6th P.M.  
660' FNL 400' FWL



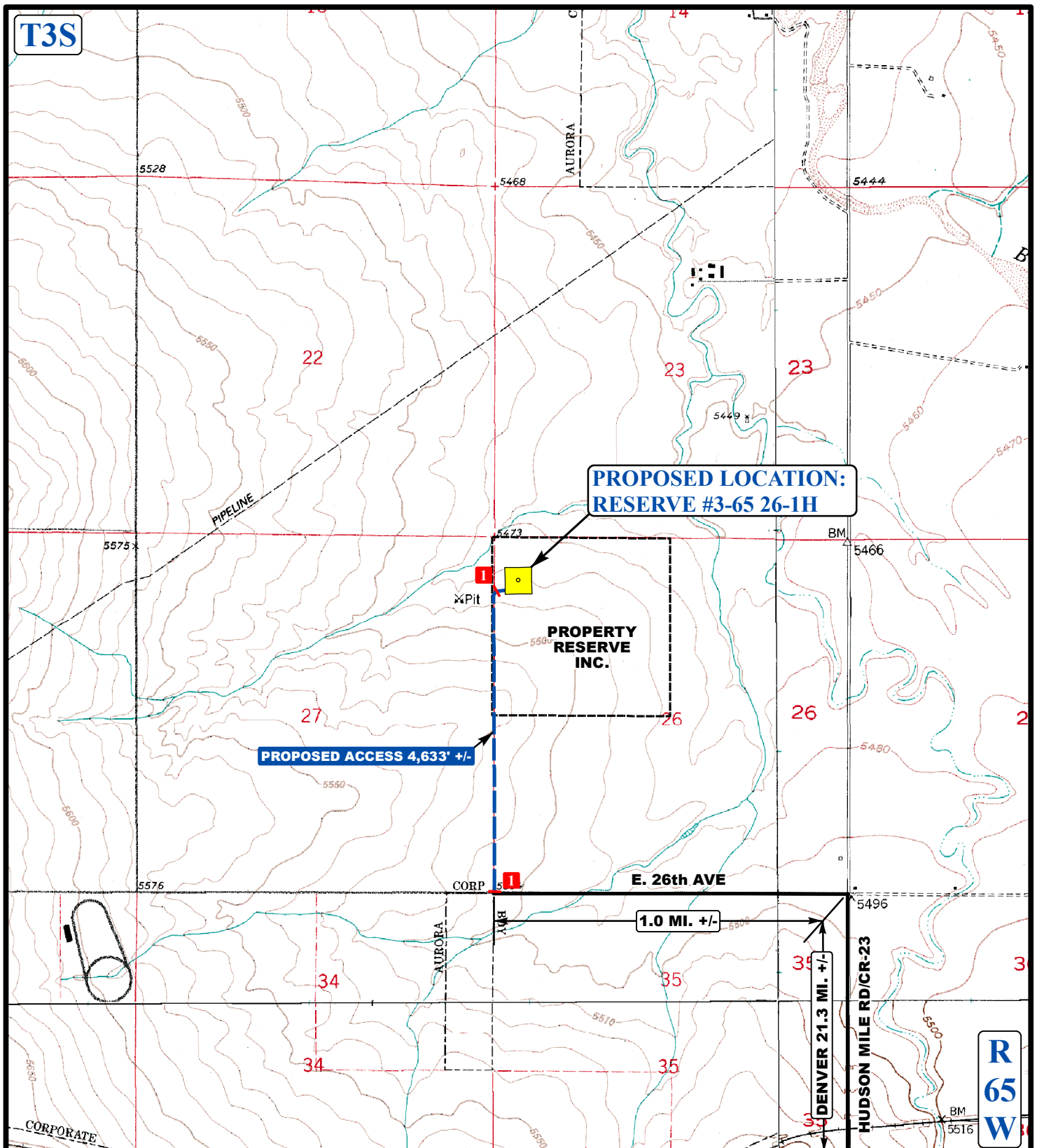
**Uintah Engineering & Land Surveying**  
85 South 200 East Vernal, Utah 84078  
(435) 789-1017 \* FAX (435) 789-1813

**ACCESS ROAD  
MAP**

**08 13 13**  
MONTH DAY YEAR

SCALE: 1:100,000 DRAWN BY: J.L.H. REVISED: 09-09-13





# LEGEND:

- EXISTING ROADS
- PROPOSED ACCESS ROAD
- 18" CMP REQUIRED



ConocoPhillips Company

RESERVE #3-65 26-1H  
SECTION 26, T3S, R65W, 6th P.M.  
660' FNL 400' FWL



Utah Engineering & Land Surveying  
85 South 200 East Vernal, Utah 84078  
(435) 789-1017 \* FAX (435) 789-1813

ACCESS ROAD  
MAP

08 13 13  
MONTH DAY YEAR

SCALE: 1"=2000' DRAWN BY: J.L.H. REVISED: 09-09-13

