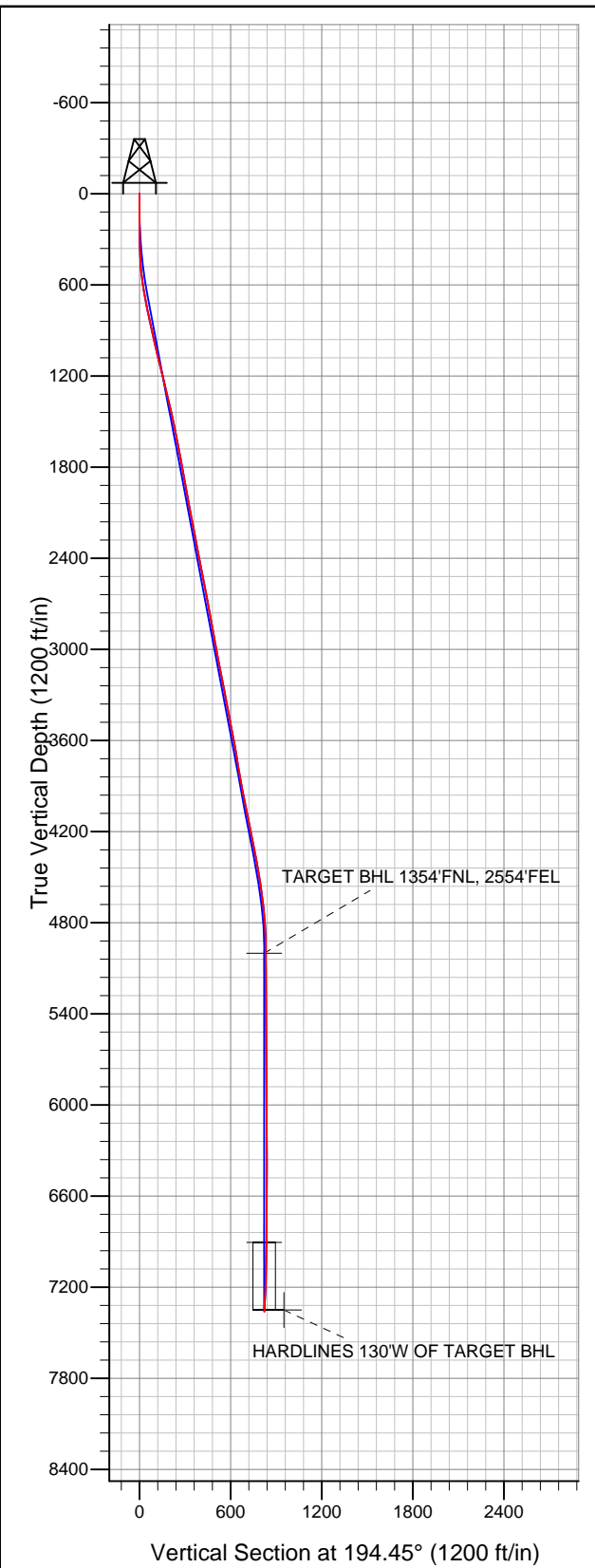


# Well Name: Booth 21-26

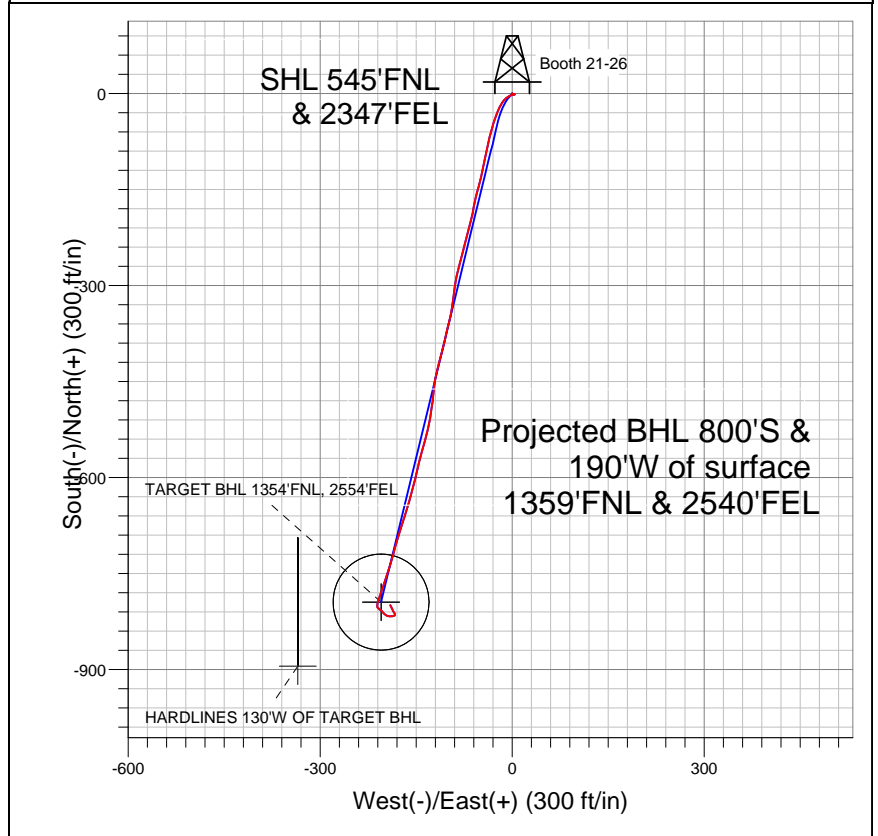
Surface Location: Booth 9 Pad Sec.26-T7N-R65W  
 North American Datum 1983 US State Plane 1983 Colorado Northern Zone  
 Ground Elevation: 4894.0  

+N/-S	+E/-W	Northing	Easting	Latitude	Longitude	Slot
0.0	0.0	1444912.97	3242034.56	40.551423	-104.629008	

 Original Well Elev WELL @ 4910.0ft (Original Well Elev)



## BAYSWATER EXPLORATION & PRODUCTION



### LEGEND

- Booth 21-26, Wellbore #1, Plan #1 (5-21-12) V0
- Wellbore #1
- Survey #1

## Final Survey Plot

Projected Final Survey -  
 7440'MD & 7360'TVD @ 822'VS  
 3.9 deg Inc 332.6 deg AZ

Project: SEC.26-T7N-R65W  
 Site: Booth 9 Pad Sec.26-T7N-R65W  
 Well: Booth 21-26  
 Plan: Wellbore #1



# **BAYSWATER EXPLORATION & PRODUCTION**

**SEC.26-T7N-R65W**

**Booth 9 Pad Sec.26-T7N-R65W**

**Booth 21-26**

**Wellbore #1**

**Survey: Survey #1**

## **Standard Survey Report**

**08 October, 2012**

Survey	Wellbore Data									
	Measured Depth (ft)	Inclination (°)	Azimuth (°)	Vertical Depth (ft)	+N-S (ft)	+E-W (ft)	Vertical Section (ft)	Dogleg Rate (°/100ft)	Build Rate (°/100ft)	Turn Rate (°/100ft)
	0.0	0.00	0.00	0.0	0.0	0.0	0.0	0.00	0.00	0.00
	98.0	1.60	101.30	98.0	-0.3	1.3	-0.1	1.63	1.63	0.00
	185.0	1.50	116.30	185.0	-1.0	3.6	0.1	0.48	-0.11	17.24
	274.0	0.90	273.80	273.9	-1.5	3.9	0.5	2.65	-0.67	176.97
	365.0	3.70	258.80	364.9	-2.0	0.3	1.9	3.12	3.08	-16.48
	457.0	5.50	239.10	456.6	-4.8	-6.4	6.3	2.58	1.96	-21.41
	548.0	7.50	218.20	547.0	-11.8	-13.8	14.8	3.37	2.20	-22.97
	640.0	9.90	202.20	637.9	-23.8	-20.5	28.2	3.68	2.61	-17.39
	720.0	10.60	202.20	716.7	-37.0	-25.9	42.3	0.88	0.88	0.00
	800.0	11.90	196.30	795.1	-51.7	-31.0	57.8	2.17	1.63	-7.38
	894.0	12.70	191.10	887.0	-71.2	-35.7	77.8	1.45	0.85	-5.53
	987.0	13.10	193.80	977.6	-91.4	-40.2	98.6	0.78	0.43	2.90

<b>Company:</b>	BAYSWATER EXPLORATION & PRODUCTION	<b>Local Co-ordinate Reference:</b>	Well Booth 21-26
<b>Project:</b>	SEC.26-T7N-R65W	<b>TVD Reference:</b>	WELL @ 4910.0ft (Original Well Elev)
<b>Site:</b>	Booth 9 Pad Sec.26-T7N-R65W	<b>MD Reference:</b>	WELL @ 4910.0ft (Original Well Elev)
<b>Well:</b>	Booth 21-26	<b>North Reference:</b>	True
<b>Wellbore:</b>	Wellbore #1	<b>Survey Calculation Method:</b>	Minimum Curvature
<b>Design:</b>	Wellbore #1	<b>Database:</b>	Landmark

Survey									
Measured Depth (ft)	Inclination (°)	Azimuth (°)	Vertical Depth (ft)	+N/-S (ft)	+E/-W (ft)	Vertical Section (ft)	Dogleg Rate (°/100ft)	Build Rate (°/100ft)	Turn Rate (°/100ft)
1,081.0	13.40	192.00	1,069.1	-112.4	-45.0	120.1	0.54	0.32	-1.91
1,175.0	13.80	192.00	1,160.5	-134.0	-49.6	142.2	0.43	0.43	0.00
1,268.0	13.40	196.60	1,250.9	-155.2	-55.0	164.0	1.24	-0.43	4.95
1,362.0	13.40	188.70	1,342.3	-176.4	-59.7	185.7	1.95	0.00	-8.40
1,456.0	12.70	195.20	1,433.9	-197.2	-64.1	206.9	1.73	-0.74	6.91
1,550.0	12.00	194.30	1,525.7	-216.6	-69.2	227.0	0.77	-0.74	-0.96
1,643.0	11.30	195.40	1,616.8	-234.8	-74.0	245.8	0.79	-0.75	1.18
1,737.0	11.20	192.70	1,709.0	-252.5	-78.5	264.1	0.57	-0.11	-2.87
1,831.0	10.50	196.20	1,801.3	-269.7	-82.9	281.8	1.02	-0.74	3.72
1,924.0	10.00	191.50	1,892.8	-285.7	-86.8	298.4	1.05	-0.54	-5.05
2,018.0	9.90	187.10	1,985.4	-301.7	-89.5	314.5	0.82	-0.11	-4.68
2,112.0	10.30	187.40	2,078.0	-318.1	-91.5	330.9	0.43	0.43	0.32
2,205.0	11.20	188.70	2,169.3	-335.3	-94.0	348.1	1.00	0.97	1.40
2,299.0	11.30	194.10	2,261.5	-353.2	-97.6	366.4	1.13	0.11	5.74
2,393.0	10.50	193.80	2,353.8	-370.5	-101.9	384.2	0.85	-0.85	-0.32
2,486.0	11.20	192.40	2,445.2	-387.5	-105.8	401.7	0.80	0.75	-1.51
2,580.0	11.30	195.50	2,537.4	-405.3	-110.3	420.0	0.65	0.11	3.30
2,674.0	10.40	193.40	2,629.7	-422.4	-114.7	437.7	1.05	-0.96	-2.23
2,768.0	10.60	192.90	2,722.1	-439.1	-118.6	454.8	0.23	0.21	-0.53
2,861.0	10.10	187.80	2,813.6	-455.5	-121.6	471.5	1.12	-0.54	-5.48
2,955.0	10.40	184.30	2,906.1	-472.2	-123.4	488.0	0.74	0.32	-3.72
3,049.0	11.10	188.90	2,998.5	-489.6	-125.4	505.4	1.18	0.74	4.89
3,142.0	11.30	189.40	3,089.7	-507.4	-128.3	523.4	0.24	0.22	0.54
3,236.0	10.90	192.90	3,181.9	-525.1	-131.8	541.4	0.83	-0.43	3.72
3,330.0	10.60	196.40	3,274.3	-542.1	-136.2	558.9	0.76	-0.32	3.72
3,423.0	10.90	195.20	3,365.7	-558.8	-140.9	576.3	0.40	0.32	-1.29
3,517.0	10.80	193.80	3,458.0	-575.9	-145.3	594.0	0.30	-0.11	-1.49
3,611.0	10.30	194.10	3,550.4	-592.6	-149.5	611.2	0.54	-0.53	0.32
3,704.0	10.70	192.90	3,641.8	-609.1	-153.4	628.1	0.49	0.43	-1.29
3,798.0	9.50	194.50	3,734.4	-625.1	-157.3	644.6	1.31	-1.28	1.70
3,892.0	9.50	196.10	3,827.1	-640.1	-161.4	660.1	0.28	0.00	1.70
3,985.0	10.20	199.60	3,918.7	-655.2	-166.3	676.0	0.99	0.75	3.76
4,079.0	11.20	196.80	4,011.1	-671.8	-171.7	693.4	1.20	1.06	-2.98
4,173.0	11.70	196.60	4,103.2	-689.7	-177.1	712.1	0.53	0.53	-0.21
4,267.0	11.70	196.60	4,195.2	-707.9	-182.6	731.1	0.00	0.00	0.00
4,360.0	11.60	195.50	4,286.3	-726.0	-187.7	749.9	0.26	-0.11	-1.18
4,454.0	10.80	196.60	4,378.5	-743.5	-192.8	768.1	0.88	-0.85	1.17
4,548.0	9.60	199.90	4,471.1	-759.3	-198.0	784.7	1.42	-1.28	3.51
4,641.0	8.50	197.50	4,562.9	-773.2	-202.7	799.3	1.25	-1.18	-2.58
4,735.0	6.50	201.00	4,656.1	-784.8	-206.7	811.5	2.18	-2.13	3.72
4,829.0	4.70	196.20	4,749.6	-793.5	-209.7	820.7	1.98	-1.91	-5.11
4,922.0	3.20	181.80	4,842.4	-799.7	-210.8	827.0	1.92	-1.61	-15.48
5,016.0	0.70	137.20	4,936.4	-802.8	-210.5	829.9	2.92	-2.66	-47.45
5,079.6	0.77	131.48	5,000.0	-803.3	-209.9	830.3	0.15	0.10	-8.98
TARGET BHL 1354'FNL, 2554'FEL									
5,110.0	0.80	129.10	5,030.3	-803.6	-209.6	830.5	0.15	0.11	-7.85
5,203.0	0.60	137.00	5,123.3	-804.4	-208.8	831.0	0.24	-0.22	8.49
5,297.0	0.60	135.90	5,217.3	-805.1	-208.1	831.5	0.01	0.00	-1.17
5,391.0	0.60	149.00	5,311.3	-805.8	-207.5	832.1	0.15	0.00	13.94
5,485.0	0.70	106.80	5,405.3	-806.4	-206.7	832.5	0.51	0.11	-44.89
5,578.0	0.60	112.60	5,498.3	-806.8	-205.7	832.6	0.13	-0.11	6.24
5,672.0	0.50	123.50	5,592.3	-807.2	-204.9	832.8	0.15	-0.11	11.60
5,766.0	0.80	133.40	5,686.3	-807.9	-204.1	833.2	0.34	0.32	10.53

<b>Company:</b>	BAYSWATER EXPLORATION & PRODUCTION	<b>Local Co-ordinate Reference:</b>	Well Booth 21-26
<b>Project:</b>	SEC.26-T7N-R65W	<b>TVD Reference:</b>	WELL @ 4910.0ft (Original Well Elev)
<b>Site:</b>	Booth 9 Pad Sec.26-T7N-R65W	<b>MD Reference:</b>	WELL @ 4910.0ft (Original Well Elev)
<b>Well:</b>	Booth 21-26	<b>North Reference:</b>	True
<b>Wellbore:</b>	Wellbore #1	<b>Survey Calculation Method:</b>	Minimum Curvature
<b>Design:</b>	Wellbore #1	<b>Database:</b>	Landmark

Survey									
Measured Depth (ft)	Inclination (°)	Azimuth (°)	Vertical Depth (ft)	+N/-S (ft)	+E/-W (ft)	Vertical Section (ft)	Dogleg Rate (°/100ft)	Build Rate (°/100ft)	Turn Rate (°/100ft)
5,859.0	1.60	146.10	5,779.3	-809.4	-202.9	834.4	0.90	0.86	13.66
5,953.0	1.60	134.50	5,873.3	-811.4	-201.2	835.9	0.34	0.00	-12.34
6,047.0	1.60	130.80	5,967.2	-813.2	-199.3	837.2	0.11	0.00	-3.94
6,140.0	1.40	128.20	6,060.2	-814.7	-197.4	838.2	0.23	-0.22	-2.80
6,234.0	1.00	114.30	6,154.2	-815.8	-195.8	838.8	0.52	-0.43	-14.79
6,328.0	1.10	103.30	6,248.1	-816.3	-194.1	838.9	0.24	0.11	-11.70
6,421.0	1.20	98.30	6,341.1	-816.7	-192.3	838.8	0.15	0.11	-5.38
6,515.0	1.10	89.20	6,435.1	-816.8	-190.4	838.5	0.22	-0.11	-9.68
6,609.0	1.00	83.20	6,529.1	-816.7	-188.7	837.9	0.16	-0.11	-6.38
6,703.0	1.00	86.00	6,623.1	-816.5	-187.1	837.4	0.05	0.00	2.98
6,796.0	0.90	76.70	6,716.1	-816.3	-185.5	836.8	0.20	-0.11	-10.00
6,890.0	1.00	60.40	6,810.1	-815.7	-184.1	835.9	0.31	0.11	-17.34
6,984.0	0.50	26.20	6,904.0	-815.0	-183.2	834.9	0.69	-0.53	-36.38
6,984.2	0.50	26.20	6,904.2	-815.0	-183.2	834.9	0.00	0.00	0.00
TARGET CIRCLE 1354'FNL, 2554'FEL									
7,077.0	0.90	0.40	6,997.0	-813.9	-183.0	833.8	0.54	0.43	-27.79
7,171.0	1.40	326.50	7,091.0	-812.2	-183.7	832.3	0.88	0.53	-36.06
7,265.0	3.00	333.30	7,184.9	-809.0	-185.4	829.7	1.72	1.70	7.23
7,358.0	3.60	331.80	7,277.8	-804.3	-187.9	825.7	0.65	0.65	-1.61
7,429.3	3.86	332.50	7,348.9	-800.2	-190.0	822.3	0.37	0.37	0.99
HARDLINES 130'W OF TARGET BHL									
7,440.0	3.90	332.60	7,359.6	-799.5	-190.4	821.7	0.37	0.37	0.91

Checked By: \_\_\_\_\_ Approved By: \_\_\_\_\_ Date: \_\_\_\_\_