



Well Name: Booth 7-26

Surface Location: Booth 9 Pad Sec.26-T7N-R65W
North American Datum 1983 US State Plane 1983 Colorado Northern Zone
Ground Elevation: 4894.0
Northing 1444937.58 Easting 3242054.61 Latitude 40.551490 Longitude -104.628935 Slot
Original Well Elev WELL @ 4910.0ft (Original Well Elev)

+N/-S +E/-W
0.0 0.0

Northing
1444937.58

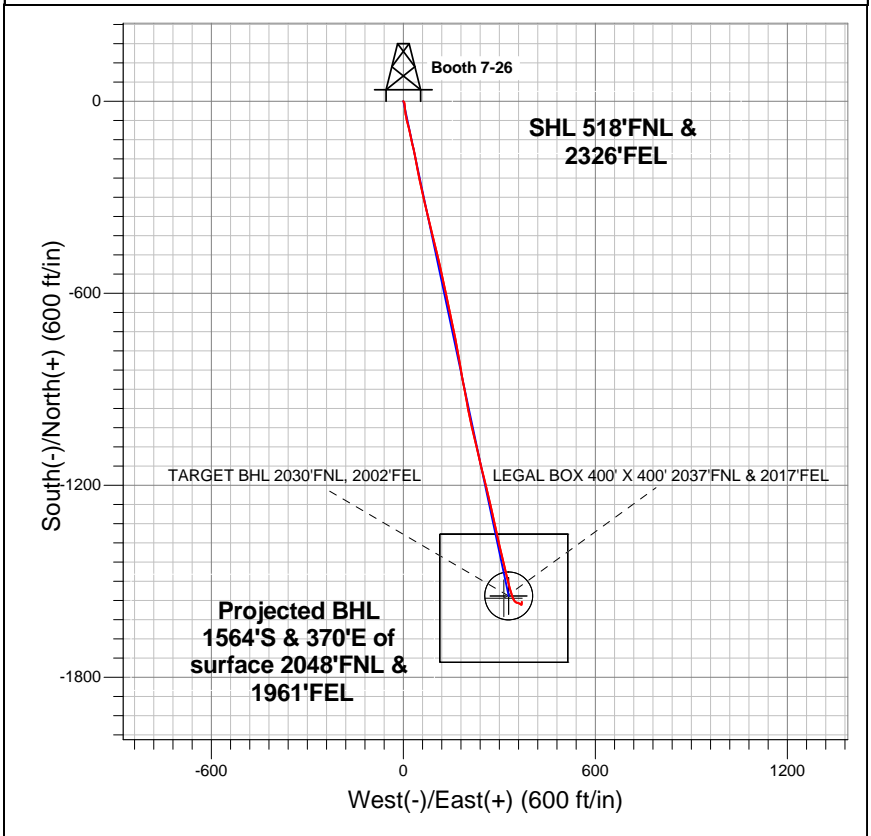
Easting
3242054.61

Latitude
40.551490

Longitude
-104.628935

Slot

BAYSWATER EXPLORATION & PRODUCTION



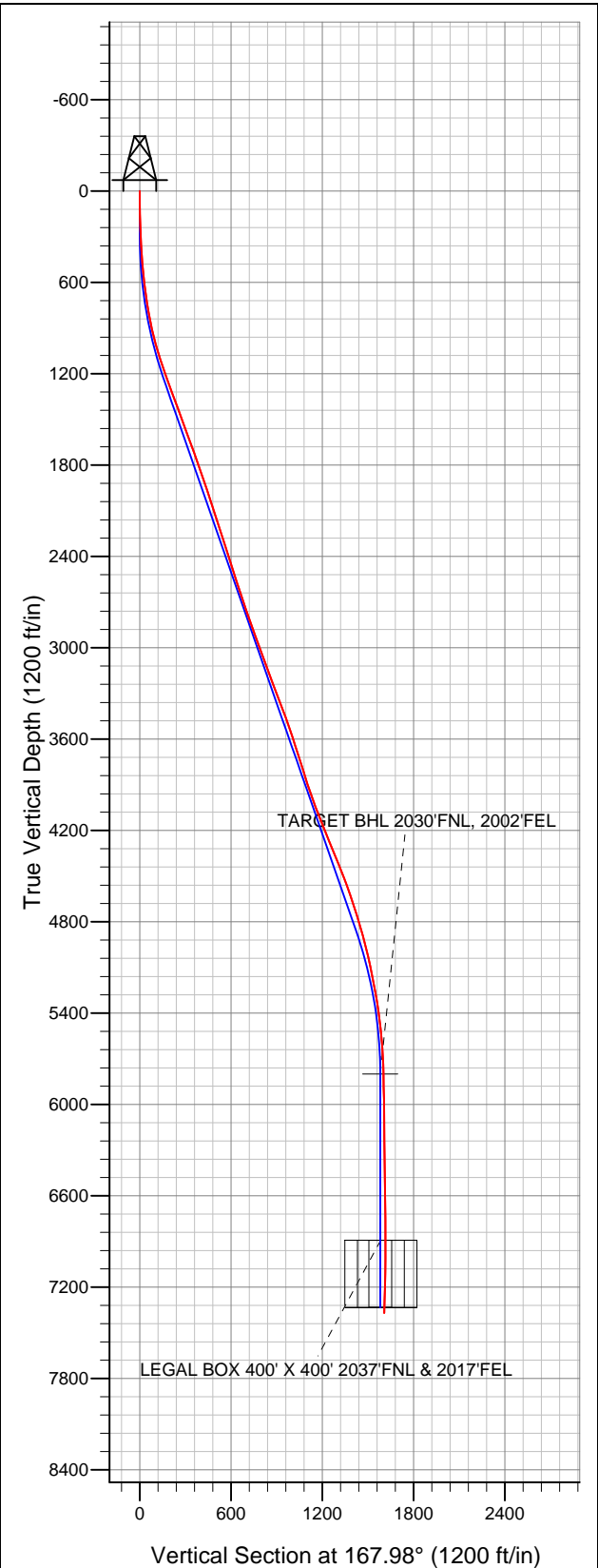
LEGEND

- Booth 7-26, Wellbore #1, Plan #1 (10-12-12) R V0
- Wellbore #1
- Survey #1

Final Survey Plot

Projected Final Survey -
7625'MD & 7371'TVD @ 1607'VS
1.60 deg Inc 6.40 deg AZ

Project: SEC.26-T7N-R65W
Site: Booth 9 Pad Sec.26-T7N-R65W
Well: Booth 7-26
Plan: Wellbore #1





Directional

BAYSWATER EXPLORATION & PRODUCTION

SEC.26-T7N-R65W

Booth 9 Pad Sec.26-T7N-R65W

Booth 7-26

Wellbore #1

Survey: Survey #1

Standard Survey Report

22 October, 2012

Survey	Wellbore Data									
	Measured Depth (ft)	Inclination (°)	Azimuth (°)	Vertical Depth (ft)	+N/-S (ft)	+E/-W (ft)	Vertical Section (ft)	Dogleg Rate (°/100ft)	Build Rate (°/100ft)	Turn Rate (°/100ft)
Survey A	0.0	0.00	0.00	0.0	0.0	0.0	0.0	0.00	0.00	0.00
	154.0	1.30	141.90	154.0	-1.4	1.1	1.6	0.84	0.84	0.00
	243.0	1.70	152.50	243.0	-3.3	2.3	3.7	0.55	0.45	11.91
	334.0	3.00	169.20	333.9	-6.9	3.4	7.4	1.60	1.43	18.35
	426.0	4.20	172.20	425.7	-12.6	4.3	13.2	1.32	1.30	3.26
	517.0	5.20	178.70	516.4	-20.0	4.8	20.6	1.24	1.10	7.14
	610.0	6.50	173.60	608.9	-29.4	5.5	30.0	1.50	1.40	-5.48
	703.0	8.60	168.30	701.1	-41.5	7.5	42.1	2.38	2.26	-5.70
	800.0	9.80	169.70	796.8	-56.7	10.5	57.7	1.26	1.24	1.44
	894.0	12.20	164.10	889.1	-74.1	14.6	75.6	2.79	2.55	-5.96
	988.0	14.80	168.10	980.5	-95.4	19.8	97.5	2.94	2.77	4.26
	1,081.0	17.20	166.90	1,069.9	-120.5	25.4	123.1	2.60	2.58	-1.29

Company:	BAYSWATER EXPLORATION & PRODUCTION	Local Co-ordinate Reference:	Well Booth 7-26
Project:	SEC.26-T7N-R65W	TVD Reference:	WELL @ 4910.0ft (Original Well Elev)
Site:	Booth 9 Pad Sec.26-T7N-R65W	MD Reference:	WELL @ 4910.0ft (Original Well Elev)
Well:	Booth 7-26	North Reference:	True
Wellbore:	Wellbore #1	Survey Calculation Method:	Minimum Curvature
Design:	Wellbore #1	Database:	Landmark

Survey									
Measured Depth (ft)	Inclination (°)	Azimuth (°)	Vertical Depth (ft)	+N/-S (ft)	+E/-W (ft)	Vertical Section (ft)	Dogleg Rate (°/100ft)	Build Rate (°/100ft)	Turn Rate (°/100ft)
1,175.0	19.00	168.10	1,159.2	-149.0	31.7	152.3	1.96	1.91	1.28
1,269.0	20.20	169.00	1,247.8	-179.9	37.9	183.8	1.32	1.28	0.96
1,363.0	20.20	169.50	1,336.0	-211.8	44.0	216.3	0.18	0.00	0.53
1,456.0	20.00	168.30	1,423.4	-243.1	50.1	248.2	0.49	-0.22	-1.29
1,550.0	20.00	167.20	1,511.7	-274.5	57.0	280.4	0.40	0.00	-1.17
1,644.0	20.00	167.20	1,600.0	-305.9	64.1	312.5	0.00	0.00	0.00
1,737.0	20.10	166.20	1,687.4	-336.9	71.4	344.4	0.38	0.11	-1.08
1,831.0	19.30	166.90	1,775.9	-367.7	78.8	376.1	0.89	-0.85	0.74
1,925.0	19.40	166.50	1,864.6	-398.1	86.0	407.2	0.18	0.11	-0.43
2,018.0	18.60	165.50	1,952.5	-427.4	93.3	437.5	0.93	-0.86	-1.08
2,112.0	18.90	166.20	2,041.5	-456.7	100.7	467.7	0.40	0.32	0.74
2,206.0	17.90	166.50	2,130.7	-485.6	107.7	497.3	1.07	-1.06	0.32
2,299.0	17.60	167.40	2,219.3	-513.2	114.1	525.7	0.44	-0.32	0.97
2,393.0	17.10	168.10	2,309.0	-540.6	120.0	553.7	0.58	-0.53	0.74
2,487.0	17.60	167.60	2,398.7	-568.0	125.9	581.7	0.56	0.53	-0.53
2,581.0	18.50	168.30	2,488.1	-596.5	132.0	610.9	0.98	0.96	0.74
2,674.0	17.70	167.80	2,576.5	-624.7	138.0	639.8	0.88	-0.86	-0.54
2,768.0	18.60	167.40	2,665.8	-653.3	144.3	669.0	0.97	0.96	-0.43
2,862.0	19.30	167.60	2,754.7	-683.1	150.9	699.6	0.75	0.74	0.21
2,955.0	19.30	169.00	2,842.5	-713.2	157.1	730.3	0.50	0.00	1.51
3,049.0	20.00	169.70	2,931.0	-744.3	162.9	761.9	0.79	0.74	0.74
3,143.0	20.00	169.20	3,019.4	-775.9	168.8	794.0	0.18	0.00	-0.53
3,236.0	21.00	170.60	3,106.5	-808.0	174.5	826.6	1.20	1.08	1.51
3,330.0	19.70	170.40	3,194.6	-840.2	179.9	859.2	1.38	-1.38	-0.21
3,424.0	21.00	169.30	3,282.7	-872.4	185.7	891.9	1.44	1.38	-1.17
3,517.0	21.40	169.20	3,369.4	-905.4	192.0	925.5	0.43	0.43	-0.11
3,611.0	19.50	170.40	3,457.5	-937.7	197.8	958.4	2.07	-2.02	1.28
3,705.0	19.00	168.80	3,546.2	-968.2	203.4	989.3	0.77	-0.53	-1.70
3,798.0	17.70	167.90	3,634.5	-996.9	209.3	1,018.6	1.43	-1.40	-0.97
3,892.0	17.80	166.50	3,724.0	-1,024.8	215.6	1,047.3	0.47	0.11	-1.49
3,986.0	17.30	166.70	3,813.7	-1,052.4	222.2	1,075.6	0.54	-0.53	0.21
4,080.0	18.60	166.20	3,903.1	-1,080.6	229.0	1,104.6	1.39	1.38	-0.53
4,173.0	19.60	167.90	3,991.0	-1,110.2	235.8	1,135.0	1.23	1.08	1.83
4,267.0	20.80	165.70	4,079.2	-1,141.8	243.2	1,167.4	1.51	1.28	-2.34
4,361.0	22.20	166.00	4,166.6	-1,175.2	251.7	1,201.9	1.49	1.49	0.32
4,454.0	22.80	167.40	4,252.6	-1,209.8	259.8	1,237.4	0.86	0.65	1.51
4,548.0	22.30	166.40	4,339.4	-1,245.0	268.0	1,273.5	0.67	-0.53	-1.06
4,642.0	21.70	166.50	4,426.5	-1,279.2	276.3	1,308.7	0.64	-0.64	0.11
4,735.0	21.00	167.60	4,513.1	-1,312.2	283.8	1,342.5	0.87	-0.75	1.18
4,829.0	19.20	168.30	4,601.4	-1,343.8	290.6	1,374.8	1.93	-1.91	0.74
4,923.0	18.30	167.90	4,690.4	-1,373.3	296.8	1,405.0	0.97	-0.96	-0.43
5,016.0	17.00	165.30	4,779.1	-1,400.8	303.3	1,433.2	1.63	-1.40	-2.80
5,110.0	15.50	167.10	4,869.3	-1,426.3	309.6	1,459.5	1.68	-1.60	1.91
5,204.0	14.30	167.10	4,960.1	-1,449.9	315.0	1,483.7	1.28	-1.28	0.00
5,298.0	12.80	166.00	5,051.5	-1,471.3	320.1	1,505.7	1.62	-1.60	-1.17
5,391.0	11.40	166.20	5,142.4	-1,490.2	324.8	1,525.2	1.51	-1.51	0.22
5,485.0	10.80	166.20	5,234.7	-1,507.8	329.1	1,543.3	0.64	-0.64	0.00
5,579.0	9.10	164.60	5,327.3	-1,523.5	333.2	1,559.5	1.83	-1.81	-1.70
5,672.0	7.40	162.50	5,419.3	-1,536.3	337.0	1,572.8	1.86	-1.83	-2.26
5,766.0	5.90	160.20	5,512.7	-1,546.6	340.4	1,583.6	1.62	-1.60	-2.45
5,860.0	4.70	157.70	5,606.3	-1,554.7	343.5	1,592.2	1.30	-1.28	-2.66
5,953.0	2.90	140.70	5,699.1	-1,560.1	346.5	1,598.0	2.26	-1.94	-18.28
6,047.0	1.50	143.50	5,793.0	-1,562.9	348.7	1,601.3	1.49	-1.49	2.98

