



Weatherford®

Tooke Rockies, Inc.
(A Weatherford Company)

884 Implement Dr.
Dickinson, ND 58601
701-227-4408

717 West Platte
PO BOX 435
Casper, WY 82601
307-265-2124

Surface Logging Systems

Scale 1:240 (5"=100') Imperial
Measured Depth Log

Well Name: Walker 12-1H (Pilot Hole)
Location: SE/SE Sec.12, T4S-R64W. Arapahoe County, CO.
License Number: API#05-005-07203-00(Pilot Hole) Region: DJ Basin
Spud Date: 5/17/2013 Drilling Completed: 5/22/2013
Surface Coordinates: 660' FSL & 250' FEL of SE/SE Sec. 12, T4S-R64W,
Arapahoe County, CO.
Bottom Hole Proposed Lateral= 660' FSL & 480' FWL of SW/SW of SE/SE Sec. 12, T4S-R64W
Coordinates: Arapahoe County, CO.
Ground Elevation (ft): 5712' K.B. Elevation (ft): 5736'
Logged Interval (ft): 6000' To: 7780' Total Depth (ft): 7780'
Formation: Niobrara/Greenhorn
Type of Drilling Fluid: INVERT/OBM/WATER BASE

Printed by MUD.LOG from WellSight Systems 1-800-447-1534 www.WellSight.com

OPERATOR

Company: Conoco/Phillips
Address: Attn: Abby Tomkiewicz
Three Westlake Park, Rm 14013
550 Westlake Park Blvd

GEOLOGIST

Name: Todd Thiesse, Gabe Genitempo
Company: Tooke Rockies/ Weatherford SLS
Address: PO Box 435
Casper, WY. 82602
307.265.2124

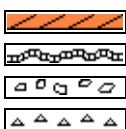
Supervision

Project Geologist: John Ostergren- Conoco/Phillips
Drilling Engineer: Gary Hamilton, Ben Tolman- Conoco/Phillips
Drilling Sup: Bob Strickler- Conoco/Phillips
Company Rep: Richard Perez, Wes Evans(Day Leads)
Company Rep: Frank Holubec, Clint Goins, Wayne Morgan(Night Leads)
Well Site Safety: Rainey Schexnider, James Orr
Contact Geologist: Abby Tomkiewicz- Conoco/Phillips
Drilling & Comp. Mgr: Derly Gonzalez-Conoco/Phillips

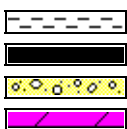
Comments

Drilling Co.--H & P, Rig #280
Toolpusher- , Mike Stevens, Josh Coleman
Dir./MWD Co.- Sperry
Mud Co.- Baroid/Haliburton, Dave Howell, Chase Putnam

ROCK TYPES



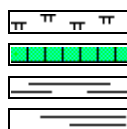
Anhy
Bent
Brec
Cht



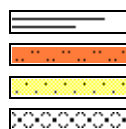
Clyst
Coal
Congl
Dol



Gyp
Igne
Lmst
Meta



Mrlst
Salt
Shale
Shcol



Shgy
Sltst
Ss
Till

ACCESSORIES

MINERAL

Anhy
Arggrn
Arg
Bent
Bit
Brecfrag
Calc
Carb
Chtdk
Chtlit
Dol
Feldspar
Ferrpel
Ferr
Glau



Gyp
Hvymin
Kaol
Marl
Minxl
Nodule
Phos
Pyr
Salt
Sandy
Silt
Sil
Sulphur
Tuff

FOSSIL

Algae
Amph
Belm
Bioclst
Brach
Bryozoa
Cephal
Coral
Crin
Echin
Fish
Foram
Fossil
Gastro
Oolite



Ostra
Pelec
Pellet
Pisolite
Plant
Strom

STRINGER

Anhy
Arg
Bent
Coal
Dol
Gyp
Ls
Mrst

Siltstrg
Ssstrg

TEXTURE

Boundst
Chalky
Cryxln
Earthy
Finexln
Grainst
Lithogr
Microxln
Mudst
Packst
Wackest

OTHER SYMBOLS

INTERVALS

Core
Dst

EVENTS

Rft
Sidewall

POROSITY TYPE

Earthy
Fenest
Fracture
Inter
Moldic
Organic

Pinpoint
Vuggy

SORTING

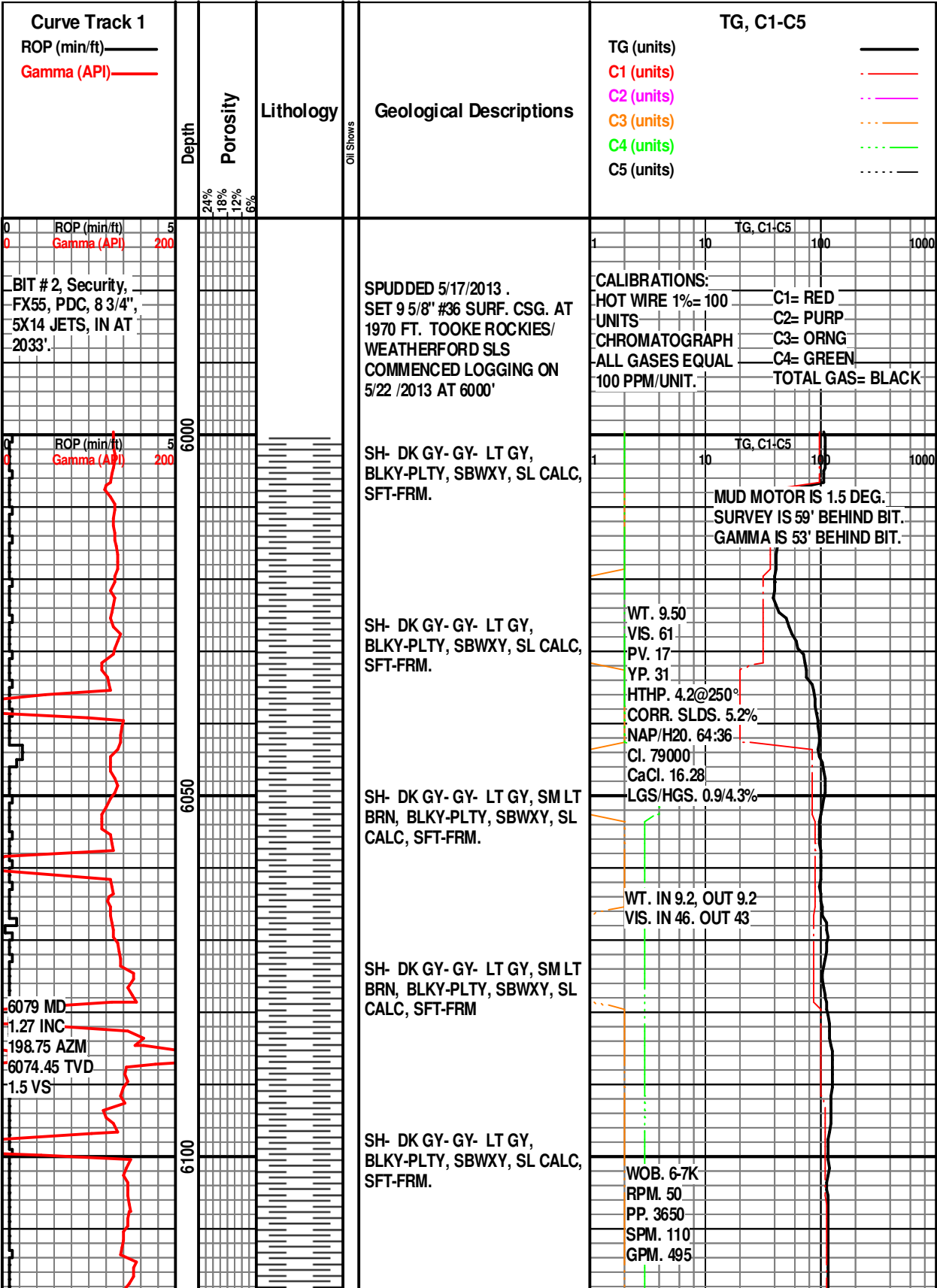
Well
Moderate
Poor

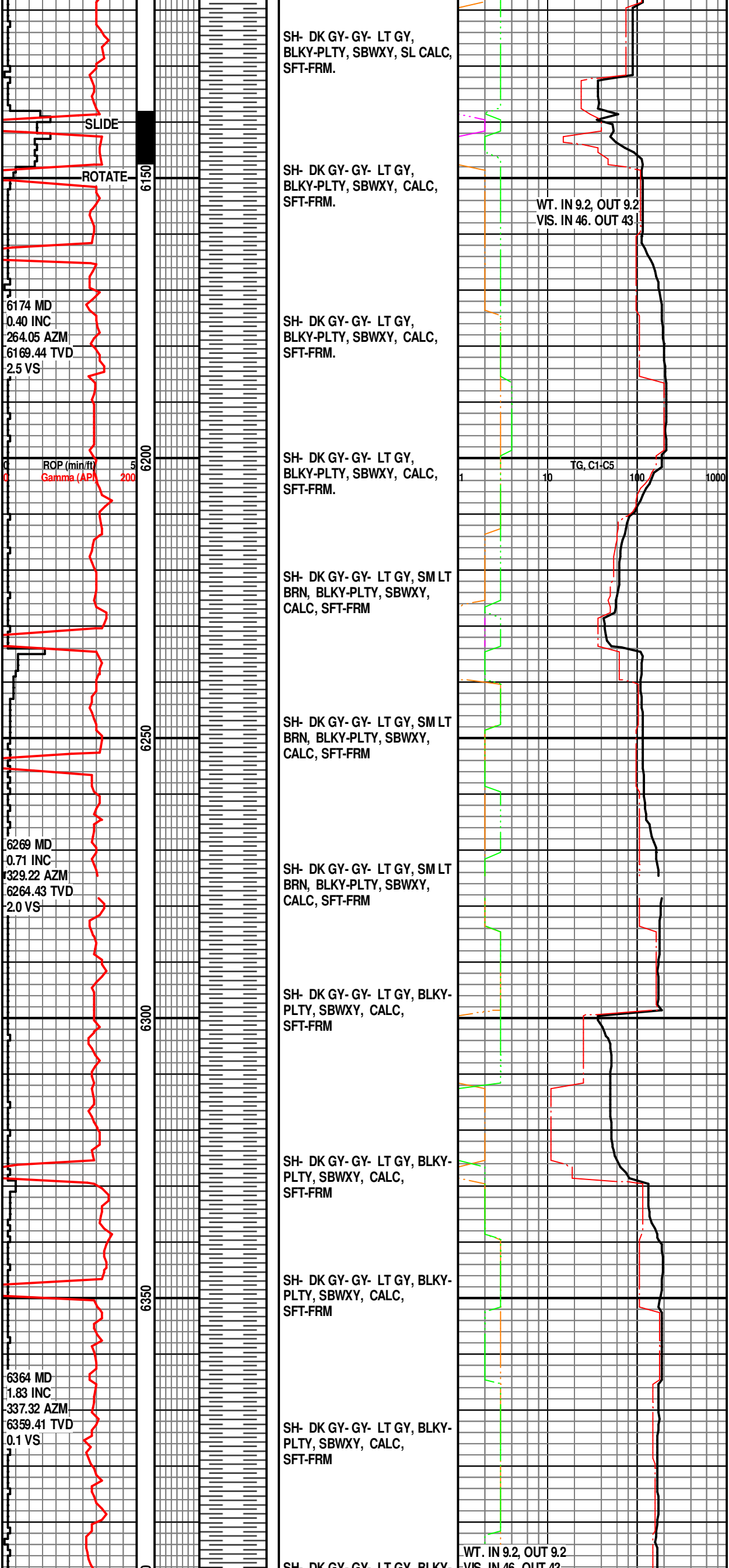
ROUNDING

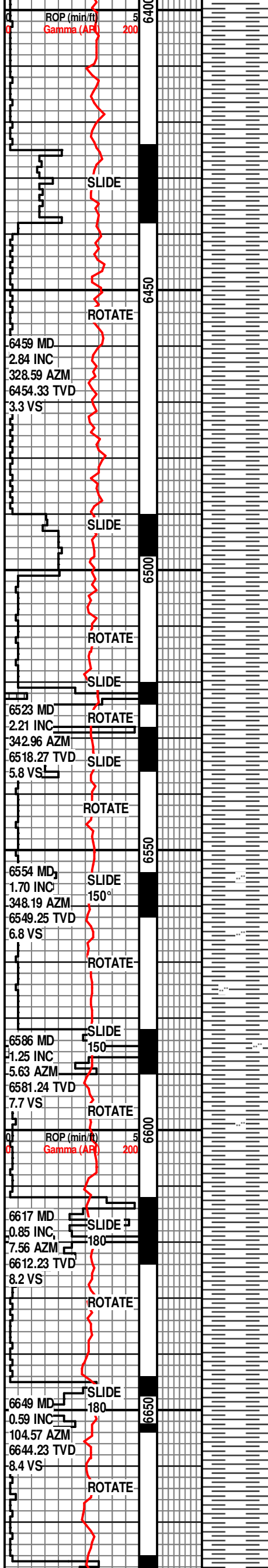
Rounded
Subrnd
Subang
Angular

OIL SHOWS

Even
Spotted
Ques
Dead







SH- DK GY- GY- LT GY, BLKY-
PLTY, SBWXY, CALC,
SFT-FRM

SH- DK GY- GY- LT GY, BLKY-
PLTY, SBWXY, CALC,
SFT-FRM

SH- DK GY- GY- LT GY, SM LT
BRN, BLKY-PLTY, SBWXY,
CALC, SFT-FRM

SH- DK GY- GY- LT GY, SM LT
BRN, BLKY-PLTY, SBWXY,
CALC, SFT-FRM

SH- DK GY- GY- LT GY, BLKY-
PLTY, SBWXY, CALC,
SFT-FRM

SH- DK GY- GY- LT GY, BLKY-
PLTY, SBWXY, CALC,
SFT-FRM

SH- GY-LT GY, SME DK GY, DK
BRN, BLKY-PLTY, SBWXY,
CALC SFT-FRM.

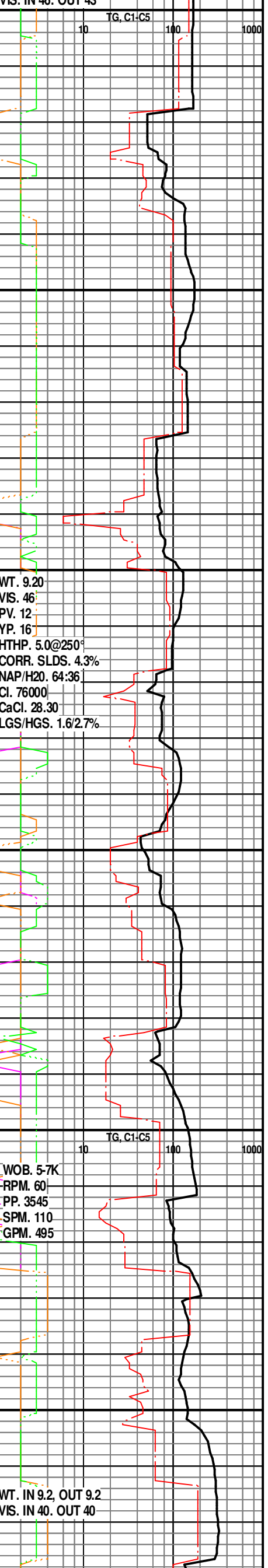
SH- GY-LT GY, SME DK GY, DK
BRN, BLKY-PLTY, SBWXY,
OCC SLTY IN PT, CALC
SFT-FRM.

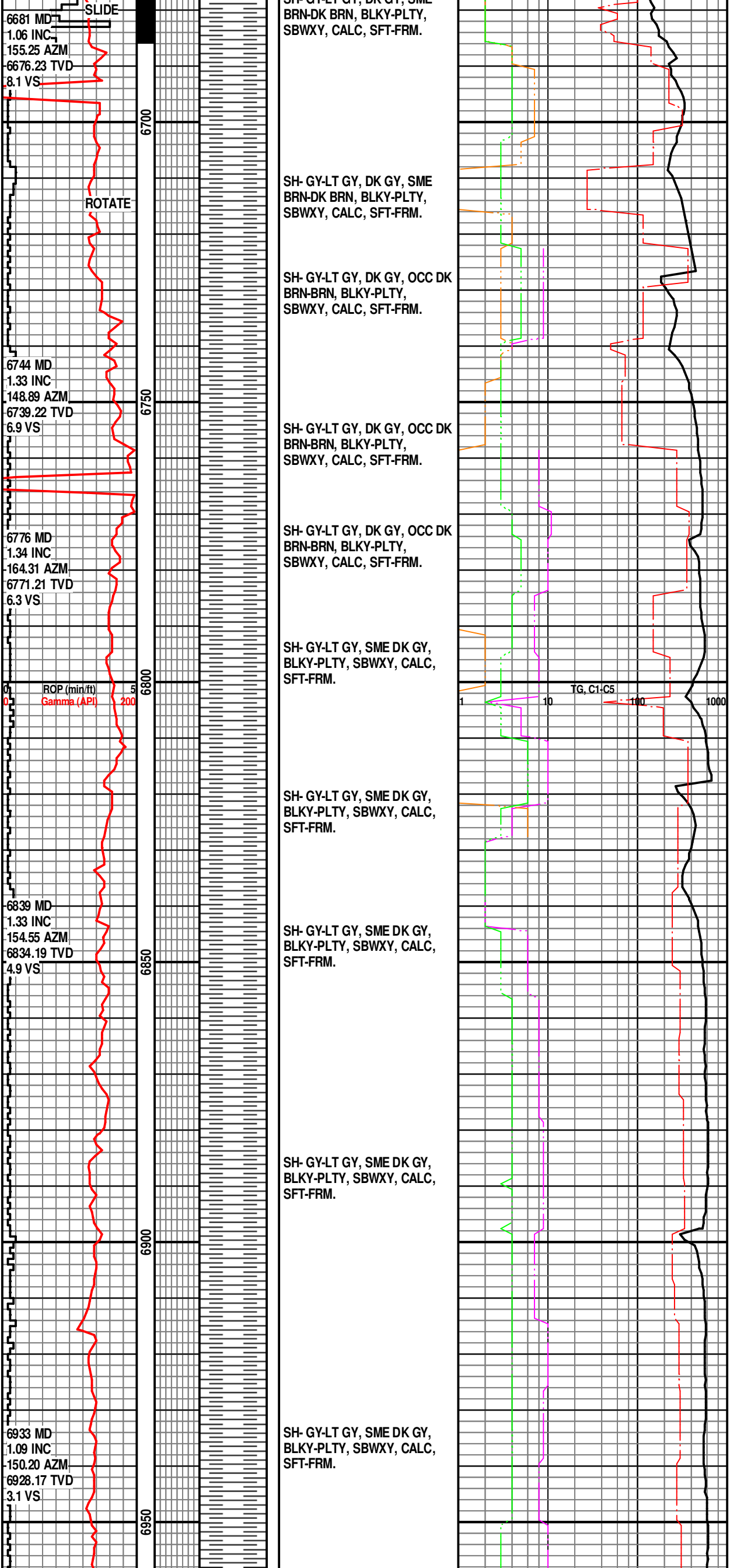
SH- GY-LT GY, SME DK GY, DK
BRN, BLKY-PLTY, SBWXY,
OCC SLTY IN PT, CALC
SFT-FRM.

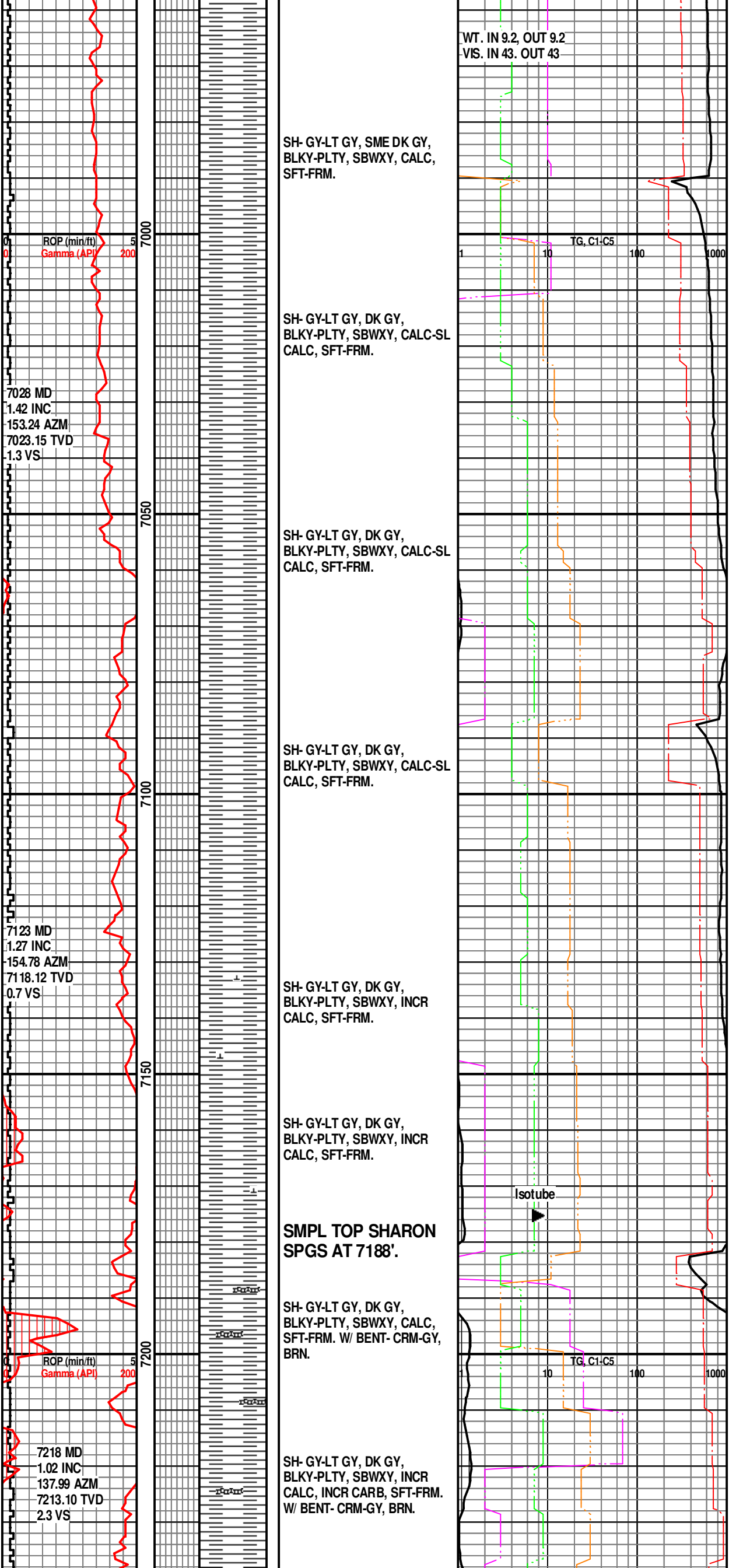
SH- GY-LT GY, DK GY, SME
BRN-DK BRN, BLKY-PLTY,
SBWXY, CALC, SFT-FRM.

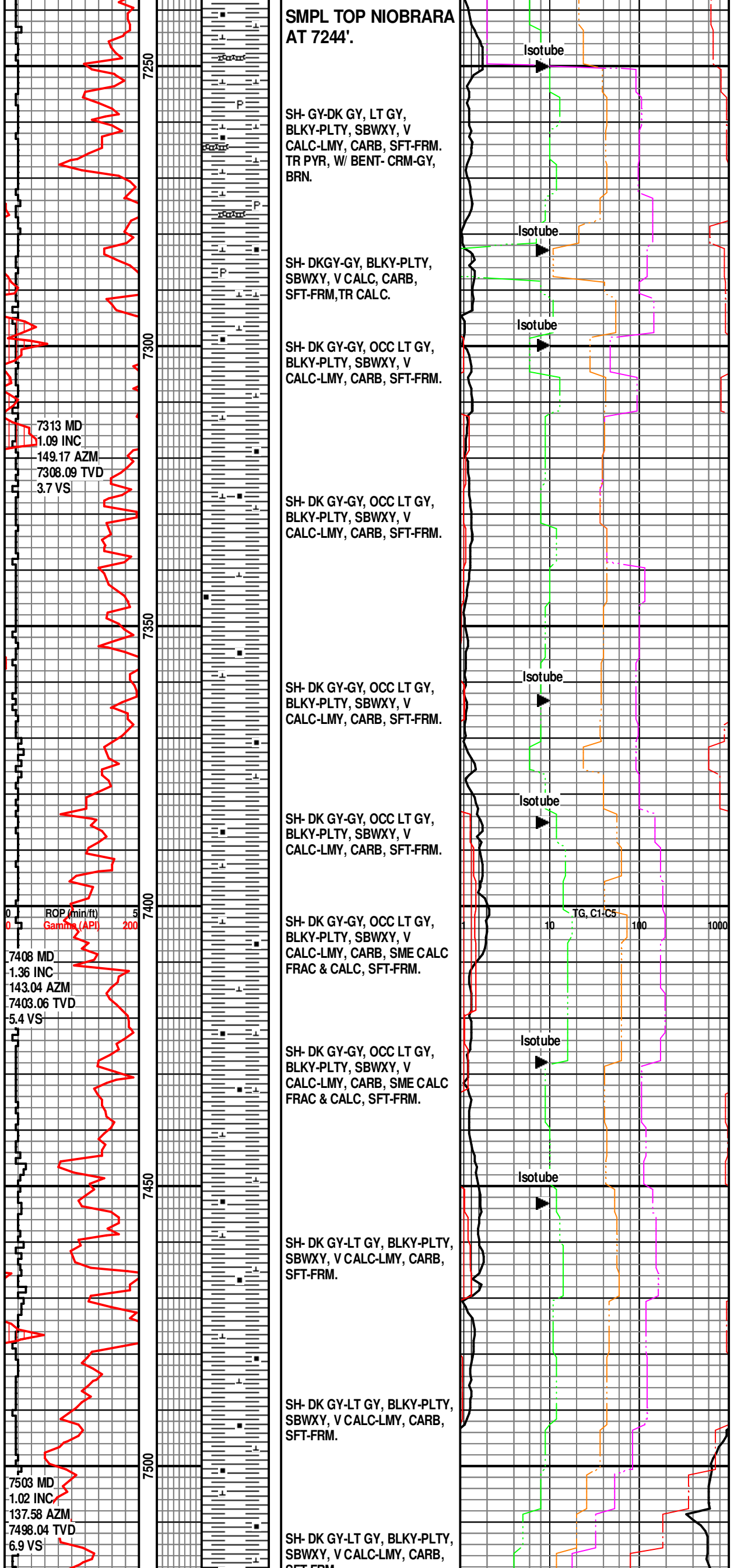
SH- GY-LT GY, DK GY, SME
BRN-DK BRN, BLKY-PLTY,
SBWXY, CALC, SFT-FRM.

SH- GY-LT GY, DK GY, SME









SMPL TOP NIOBRARA
AT 7244'.

SH- GY-DK GY, LT GY,
BLKY-PLTY, SBWXY, V
CALC-LMY, CARB, SFT-FRM.
TR PYR, W/ BENT- CRM-GY,
BRN.

SH- DKGY-GY, BLKY-PLTY,
SBWXY, V CALC, CARB,
SFT-FRM,TR CALC.

SH- DK GY-GY, OCC LT GY,
BLKY-PLTY, SBWXY, V
CALC-LMY, CARB, SFT-FRM.

SH- DK GY-GY, OCC LT GY,
BLKY-PLTY, SBWXY, V
CALC-LMY, CARB, SFT-FRM.

SH- DK GY-GY, OCC LT GY,
BLKY-PLTY, SBWXY, V
CALC-LMY, CARB, SFT-FRM.

SH- DK GY-GY, OCC LT GY,
BLKY-PLTY, SBWXY, V
CALC-LMY, CARB, SFT-FRM.

SH- DK GY-GY, OCC LT GY,
BLKY-PLTY, SBWXY, V
CALC-LMY, CARB, SME CALC
FRAC & CALC, SFT-FRM.

SH- DK GY-GY, OCC LT GY,
BLKY-PLTY, SBWXY, V
CALC-LMY, CARB, SME CALC
FRAC & CALC, SFT-FRM.

SH- DK GY-LT GY, BLKY-PLTY,
SBWXY, V CALC-LMY, CARB,
SFT-FRM.

SH- DK GY-LT GY, BLKY-PLTY,
SBWXY, V CALC-LMY, CARB,
SFT-FRM.

SH- DK GY-LT GY, BLKY-PLTY,
SBWXY, V CALC-LMY, CARB,
SFT-FRM.

