

McElvain Energy, Inc.
Magpie 5-8
P & A
October 7, 2013

LOCATION: SENE SEC 5 T3S R46W
1980' FNL & 660' FEL
Yuma County, CO

API: 05-125-10542

TD: 2470' **PBTD:** 2421' (Tag-9/4/11)

KB: 5' **GL:** 4100'

BACKGROUND: Magpie 5-8 was drilled and initially completed in 2007. The well tested non-commercial following a FRAC. To date the well has CUM'D 0 BCF. Due to non-commercial rates, this well will be P&A'D.

CURRENT STATUS: SI due to low rate & high water cut

PURPOSE: P & A well

CASING:

7", 17# , J-55 @ 287' in 9 7/8" hole
Cemented with 75 sx ASC
TOC @ surface (Returns - 4 bbls)

4 1/2", 10.5# , J-55 @ 2470' in 6 1/4" hole
Cemented in Single Stage as follows:
LEAD: 100 sx lite. 1/4 pps Flo-Seal, 1.81 yield, 12.2 ppg
TAIL: 75 sx ASC w/2% gel, 1/4 pps Flo-seal, 1.57 yield, 14.5 ppg
Pumped 175 sx Total
TOC @ Surface from CBL (11 bbls cement returned at surface)

FORMATION TOPS:

Niobrara

TVD/SS TVD
2217'/1883'

PERFORATIONS:

Niobrara: 2218'-2228' (4 SPF) 40 – 0.42" holes (2007)

Frac'd: 2218'-2228'

Frac Notes: 40 Tons CO₂, 50,560# 16/30 SAND. 500 GAL 7.5% HCL. Breakdown @ 1493#. ISIP=1040 P(5)=890, P(10)=810, P(15)=760. Opened well @ 530#.

TUBING:

None

ROD STRING:

None

PROCEDURE:

1. Prior to Service rig MIRU, set temporary anchors, blow down well to FB tank. Spot in tubing float w/ ~ 2,250' of 2 3/8" J-55 tbg.
2. MIRU rig. Install wellhead and BOPE.
3. Load hole w/water.
4. TIH open-ended w/2-3/8' tbg to tag CIBP @ ~ 2150'.
5. Mix, pump, and equalize 25 sx (360') cmt PLUG #1 (Bottom Plug) from ~2150' to \pm 1790'.
6. LD all but ~350' of tbg.
7. Mix, pump, and circulate ~ 25 sx (360') cmt PLUG #2 (Surface Plug) from ~340' to surface. Note: Must pump plug from a minimum of 50' below 7" shoe @ 287'.
8. LD all tubing.
9. Dig up wellhead & cut-off 6' below surface. Verify rat & mouse hole abandonment. Top off production casing with cement. Weld plate over stub. Re-claim surface per lease agreement and state regulations.

Note: Plugging Cement API Class 'A', 1.29 ft³/sk Yield & 15.0 ppg Density

McElvain Energy, Inc.

Magpie 5-8
API 0512510542
SENE SEC 5 T3S R46W
1980' FNL & 660' FEL
39.82604/-102.54143
Drilled 8/2005
Drawing Updated by Jeff
Updated 8/2013

all depths refer to KB 5' above mat
GL @ 4100'

Surface Casing Detail

Hole: 9 7/8" @ 290'
7", 17#, J-55, 7 jts, cmted @ 287'
Pumped 75 sx w/ 4 bbls to surface
TOC @ Surface

Production Casing Detail

Hole: 6 1/4" @ 2470'
4 1/2", 10.5#, J-55, 59 jts, cmted @ 2446'
Pumped 175 sx
Circulated 11 bbls to surface
TOC @ Surface (CBL)

Tubing Detail

None

Rod Detail

None

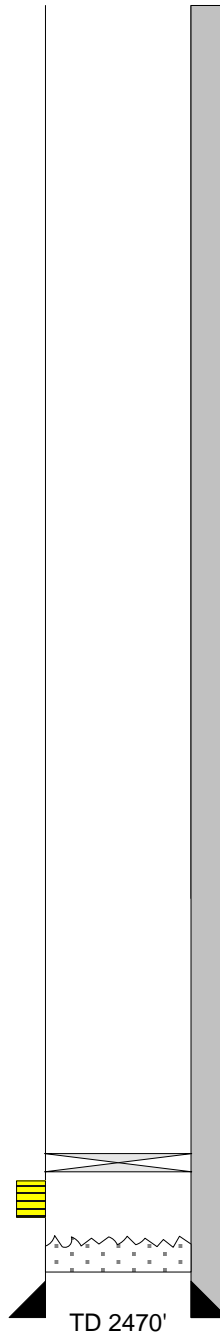
Perforations:

2218'-2228' 8/17/2007
4 SPF, .42" Holes

Frac Summary:

8/22/07-CO2 FRAC-2218'-2228'
40 Tons CO2, 50,560# 16/30
SAND. 500 GAL 7.5% HCL.
Breakdown @ 1493#. ISIP=1040
P(5)=890, P(10)=810, P(15)=760.
Opened well @ 530#.

2218'-2228'



TOC @ Surface

7" cmted 287'

Tbg = 0.00387 bbl/ft
Csg = 0.01593 bbl/ft

TOC @ surface (CBL)

Flag Jts:

CIBP @ 2150' (8/29/11)

PBTD @ 2421' (logger's tag)

4 1/2" cmted @ 2446'

TD 2470'

VisioDocument

McElvain Energy, Inc.

Magpie 5-8
API 0512510542
SENE SEC 5 T3S R46W
1980' FNL & 660' FEL
39.82604/-102.54143
Drilled 8/2005
Drawing Updated by Jeff
Updated 8/2013

all depths refer to KB 5' above mat
GL @ 4100'

Surface Casing Detail

Hole: 9 7/8" @ 290'
7", 17#, J-55, 7 jts, cmtd @ 287'
Pumped 75 sx w/ 4 bbls to surface
TOC @ Surface

Production Casing Detail

Hole: 6 1/4" @ 2470'
4 1/2", 10.5#, J-55, 59 jts, cmtd @ 2446'
Pumped 175 sx
Circulated 11 bbls to surface
TOC @ Surface (CBL)

Tubing Detail

None

Rod Detail

None

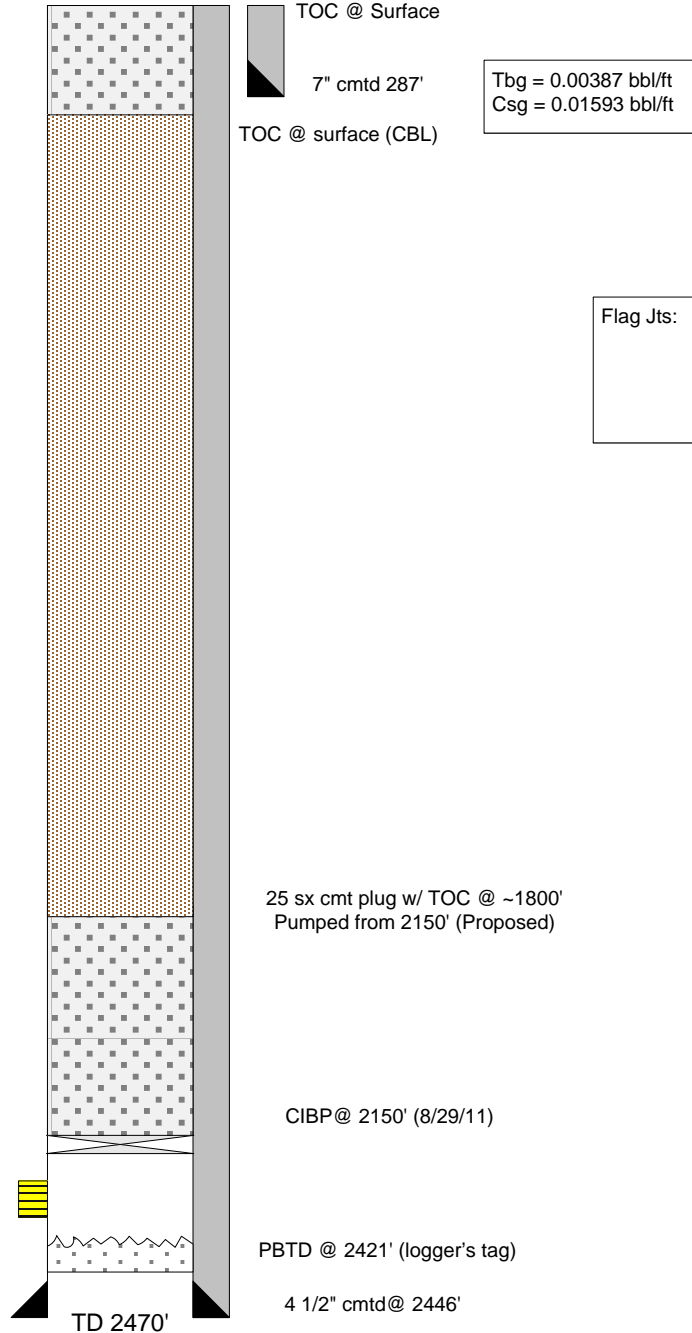
Perforations:

2218'-2228' 8/17/2007
4 SPF, .42" Holes

Frac Summary:

8/22/07-CO2 FRAC-2218'-2228'
40 Tons CO2, 50,560# 16/30
SAND. 500 GAL 7.5% HCL.
Breakdown @ 1493#. ISIP=1040
P(5)=890, P(10)=810, P(15)=760.
Opened well @ 530#.

25 sx cmt plug pumped from 340'
TOC @ Surface (Proposed)



Tbg = 0.00387 bbl/ft
Csg = 0.01593 bbl/ft