



# Weatherford®

Tooke Rockies, Inc.  
(A Weatherford Company)

884 Implement Dr.  
Dickinson, ND 58601  
701-227-4408

717 West Platte  
PO BOX 435  
Casper, WY 82601  
307-265-2124

## Surface Logging Systems

Scale 1:240 (5"=100') Imperial  
Measured Depth Log

Well Name: Tebo 1-1H (Pilot Hole)  
Location: NE/NE Sec. 1, T5S-R64W, Arapahoe County, CO  
License Number: API- 05-005-07199-00  
Spud Date: 1/30/2013  
Surface Coordinates: 660' FNL & 250' FEL of NE/NE Sec. 1 T5S-R64W, Arapahoe County, CO.  
Bottom Hole Coordinates: Proposed 660' FNL & 480' FWL of NW/NW Sec. 1 T5S-R64W, Arapahoe County, CO.  
Ground Elevation (ft): 5932' K.B. Elevation (ft): 5956'  
Logged Interval (ft): 6000' To: 7956' Total Depth (ft): 7956'  
Formation: Niobrara/Greenhorn  
Type of Drilling Fluid: INVERT/OBM/WATER BASE

Region: DJ Basin

Drilling Completed: 2/3/2013

Printed by MUD.LOG from WellSight Systems 1-800-447-1534 [www.WellSight.com](http://www.WellSight.com)

## OPERATOR

Company: Conoco/Phillips  
Address: Attn: Abby Tomkiewicz  
Three Westlake Park, Rm 14013  
550 Westlake Park Blvd

## GEOLOGIST

Name: Todd Thiesse, Gabe Genitempo  
Company: Tooke Rockies/ Weatherford SLS  
Address: PO Box 435  
Casper, WY. 82602  
307.265.2124

## Supervision

Project Geologist: John Ostergren- Conoco/Phillips  
Drilling Engineer: Gary Hamilton- Conoco/Phillips  
Drilling Sup: Bob Strickler- Conoco/Phillips  
Company Rep: Richard Perez, Frank Holubec(Day Leads)  
Company Rep: Wes Evans, Casey Burns(Night Leads)  
Well Site Safety: Rainey Schexnider, Nick Atkinson  
Contact Geologist: Abby Tomkiewicz- Conoco/Phillips

## Comments

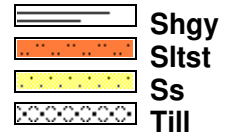
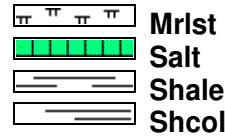
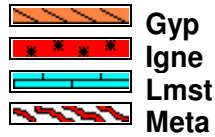
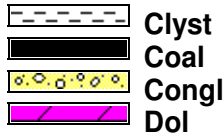
Drilling Co.--H & P, Rig #280

Toolpusher- , Mike Stevens, Josh Coleman

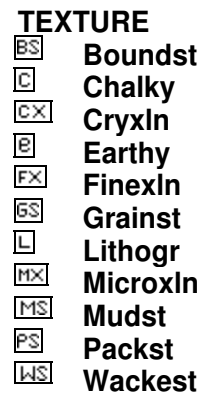
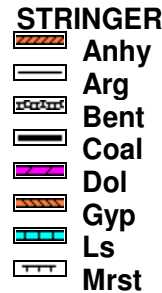
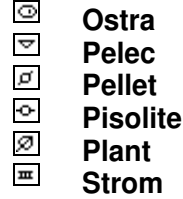
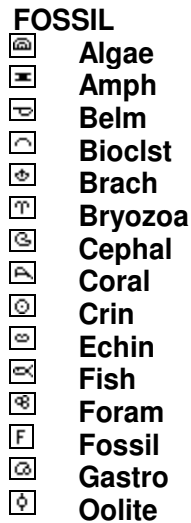
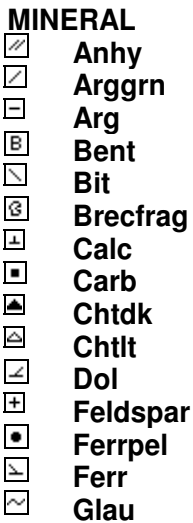
Dir. Co.- Sperry

Mud Co.- Baroid/Haliburton, Dave Howell, Chase Putnam

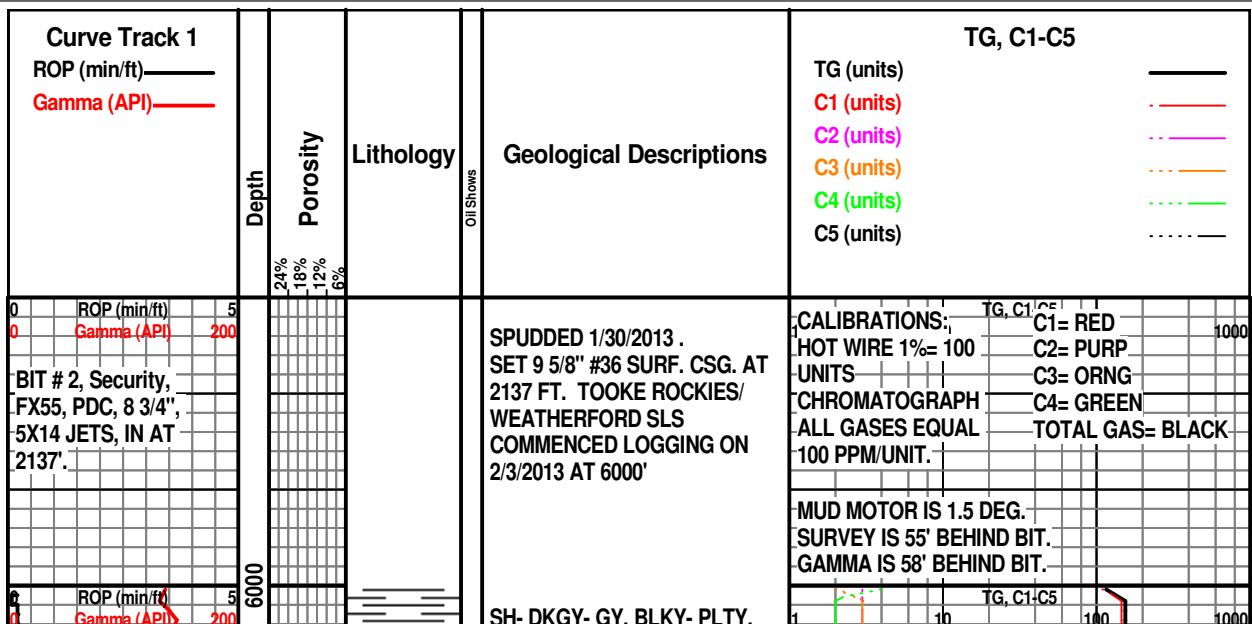
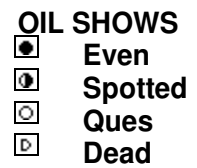
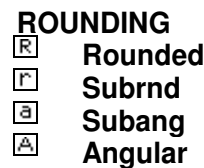
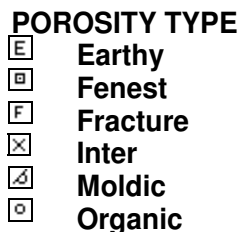
## ROCK TYPES

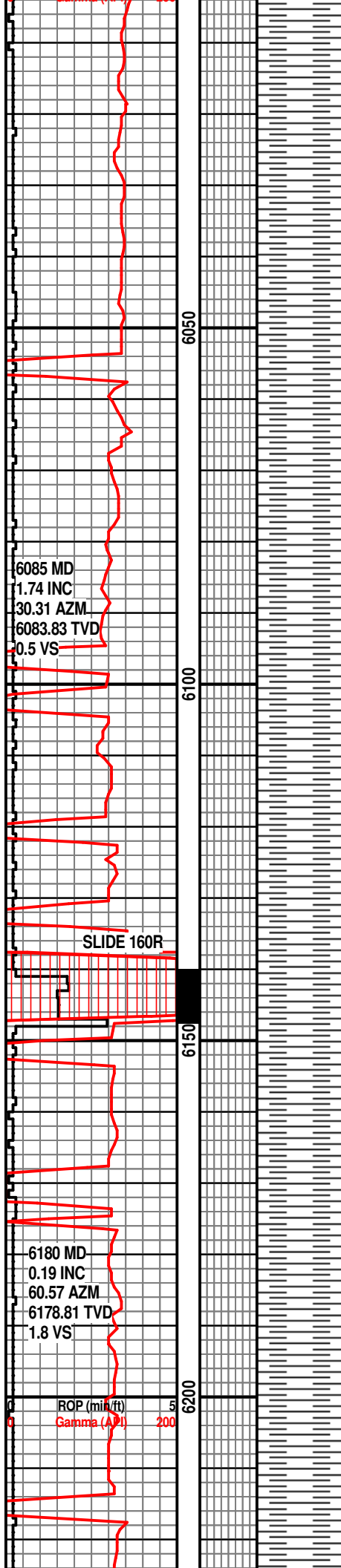


## ACCESSORIES



## OTHER SYMBOLS





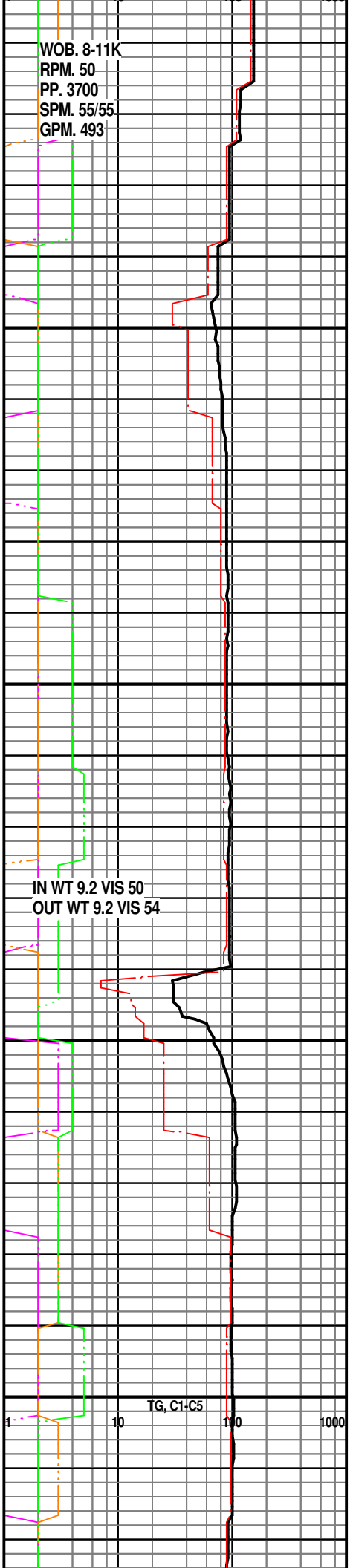
RTHY-SBWXY, SL CALC, SFT-FRM.

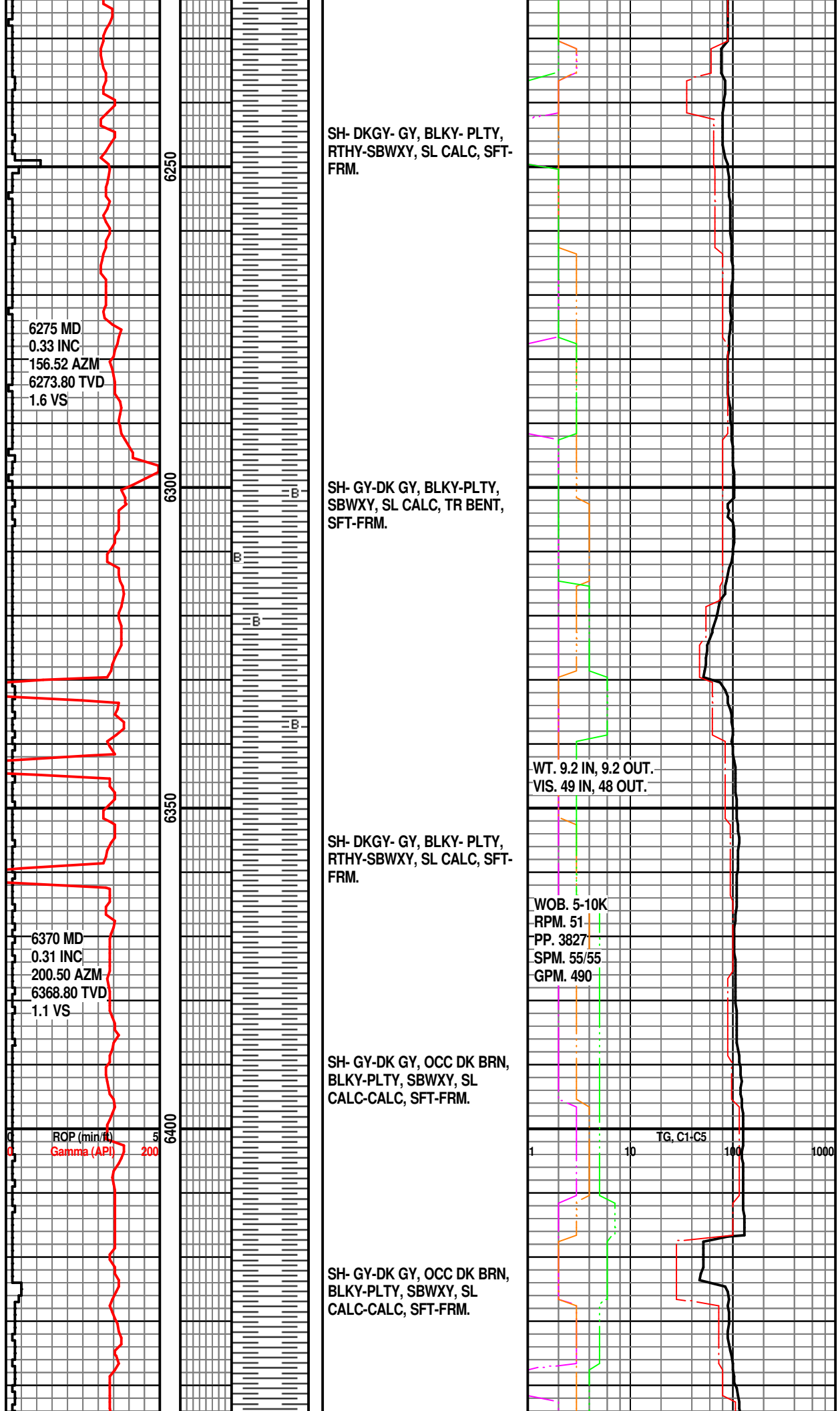
SH- DKGY- GY, BLKY- PLTY,  
RTHY-SBWXY, SL CALC, SFT-FRM.

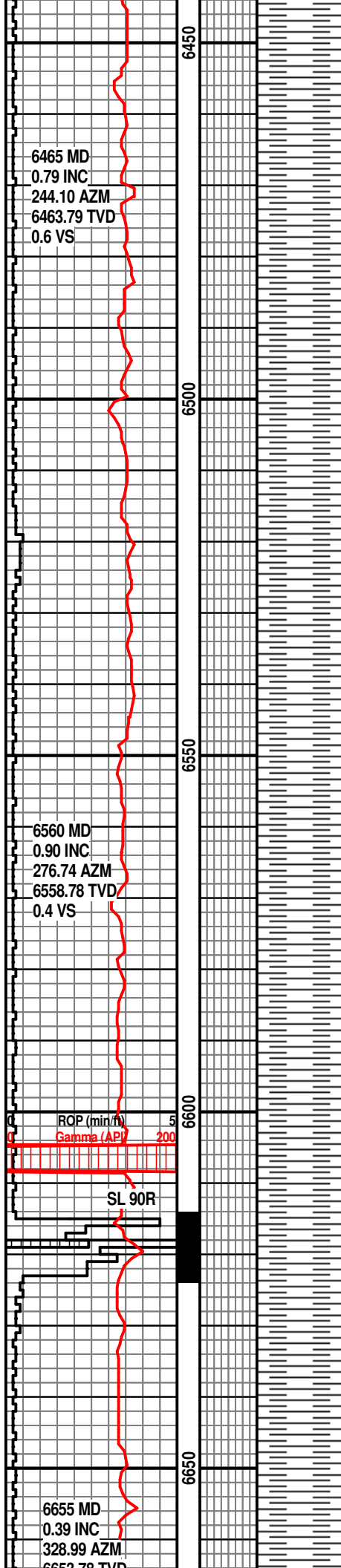
SH- DKGY- GY, BLKY- PLTY,  
RTHY-SBWXY, SL CALC, SFT-FRM.

SH- DKGY- GY, BLKY- PLTY,  
RTHY-SBWXY, SL CALC, SFT-FRM.

SH- DKGY- GY, BLKY- PLTY,  
RTHY-SBWXY, SL CALC, SFT-FRM.







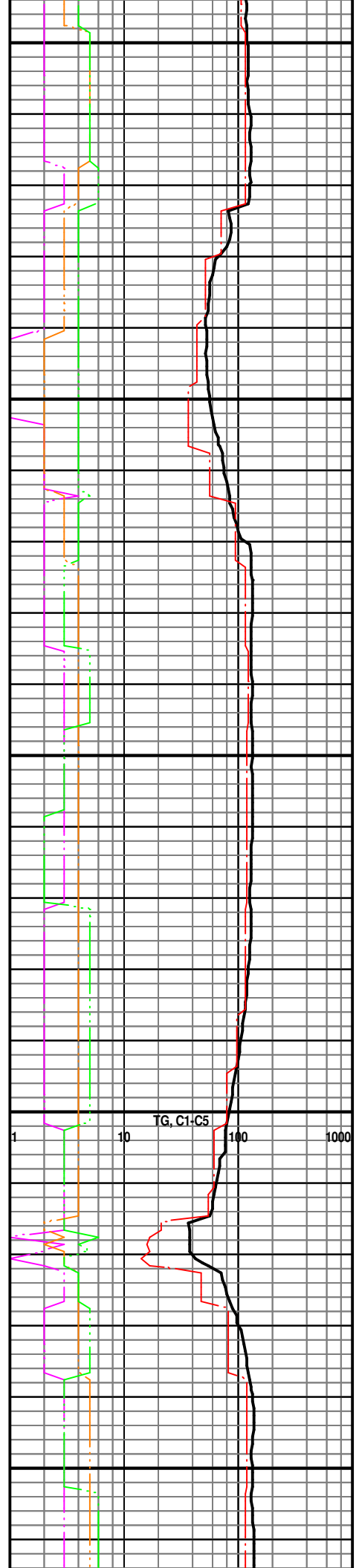
SH- GY-DK GY, OCC DK BRN,  
BLKY-PLTY, SBWXY, SL  
CALC-CALC, SFT-FRM.

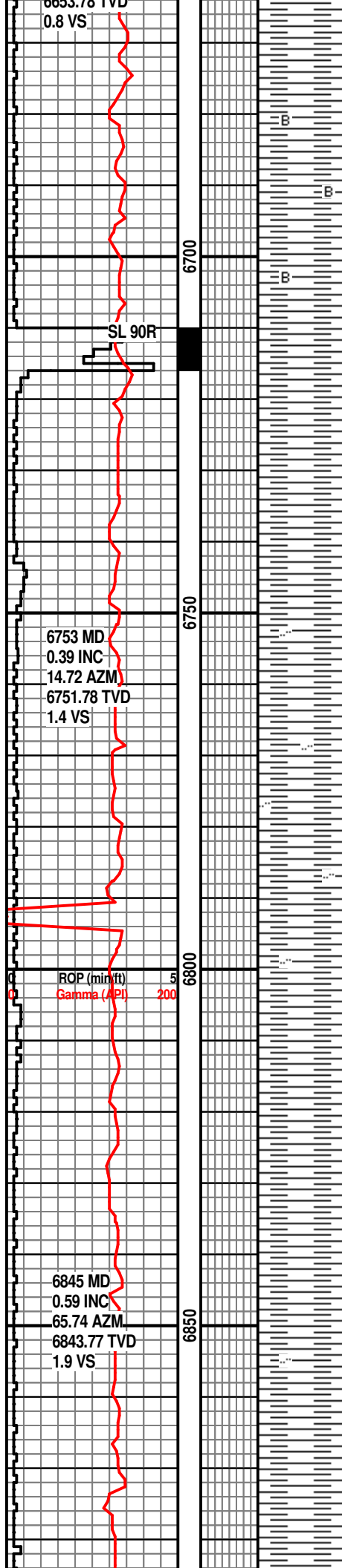
SH- GY-DK GY, OCC DK BRN,  
BLKY-PLTY, SBWXY, SL  
CALC-CALC, SFT-FRM.

SH- GY, OCC LT GY, SME DK  
BRN, BLKY-PLTY, SBWXY, SL  
CALC-CALC, V SFT-FRM.

SH- GY, OCC LT GY, SME DK  
BRN, BLKY-PLTY, SBWXY, SL  
CALC-CALC, V SFT-FRM.

SH- GY, OCC LT GY, SME DK  
BRN, BLKY-PLTY, SBWXY, SL  
CALC-CALC, V SFT-FRM.





SH- GY-DK GY, BLKY-PLTY,  
SBWXY, SL CALC, TR BENT,  
SFT-FRM.

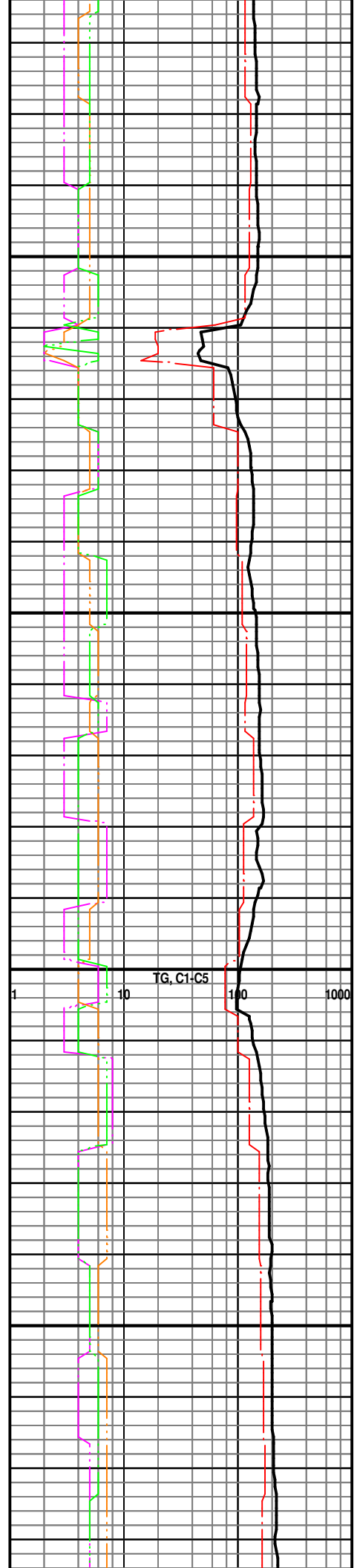
SH- GY, OCC LT GY, SME DK  
BRN, BLKY-PLTY, SBWXY, SL  
CALC-CALC, V SFT-FRM.

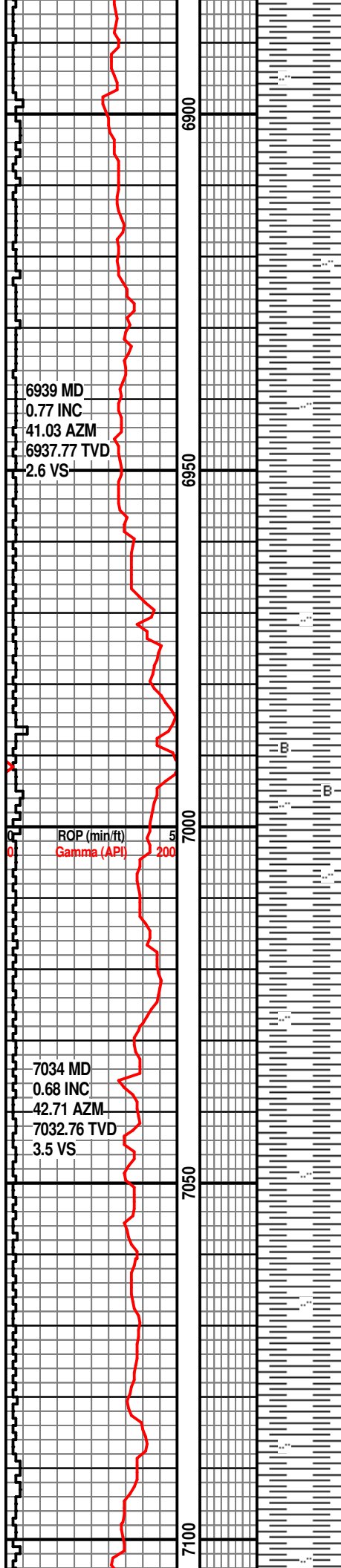
SH- GY, OCC LT GY, SME DK  
BRN, BLKY-PLTY, SBWXY, SL  
CALC-CALC, V SFT-FRM.

SH- GY, OCC LT GY, SME DK  
BRN, BLKY-PLTY, SBWXY, SL  
CALC-CALC, OCC SLTY, V  
SFT-FRM.

SH- GY, LT GY, OCC DK BRN,  
BLKY-PLTY, SBWXY, SL  
CALC-CALC, OCC SLTY, V  
SFT-FRM.

SH- GY, LT GY, OCC DK BRN,  
BLKY-PLTY, SBWXY, SL  
CALC-CALC, OCC SLTY, V  
SFT-FRM.





SH- GY, LT GY, OCC DK BRN,  
BLKY-PLTY, SBWXY, SL  
CALC-CALC, OCC SLTY, V  
SFT-FRM.

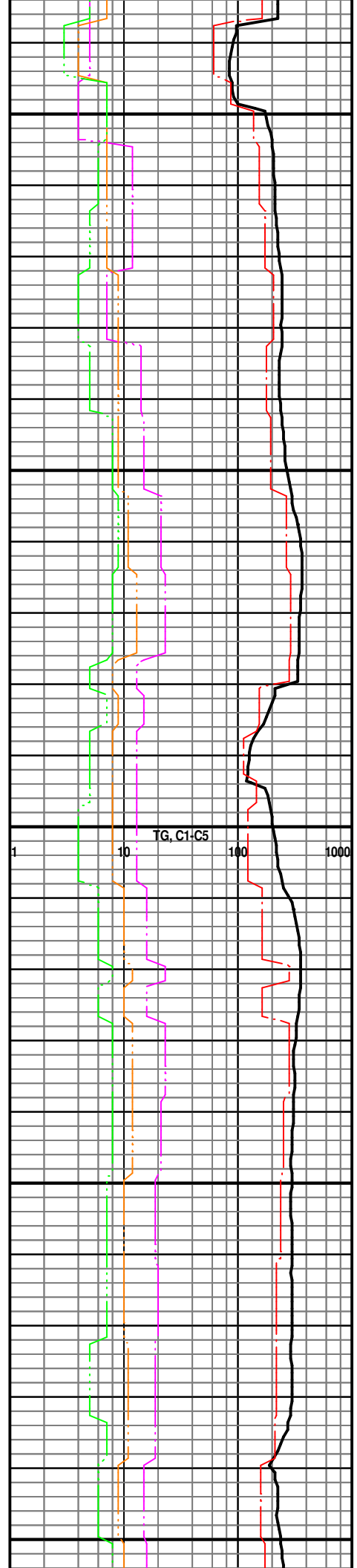
SH- GY, LT GY, OCC DK BRN,  
BLKY-PLTY, SBWXY, SL  
CALC-CALC, OCC SLTY, V  
SFT-FRM.

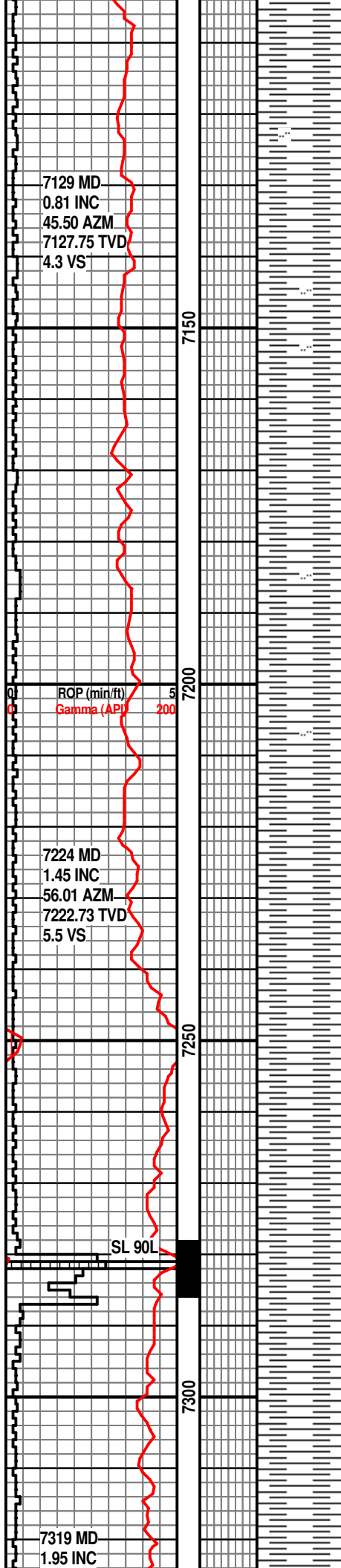
SH- GY, LT GY, OCC DK BRN,  
BLKY-PLTY, SBWXY, SL  
CALC-CALC, OCC SLTY, V  
SFT-FRM.

SH- GY-LT GY, SME DK BRN,  
BLKY-PLTY, SBWXY, SL  
CALC-CALC, OCC SLTY, V  
SFT-FRM.

SH- GY-LT GY, SME DK BRN,  
BLKY-PLTY, SBWXY, SL  
CALC-CALC, OCC SLTY, V  
SFT-FRM.

SH- GY-LT GY, SME DK BRN,  
BLKY-PLTY, SBWXY, SL  
CALC-CALC, OCC SLTY, V  
SFT-FRM.





SH- GY-LT GY, SME DK BRN,  
BLKY-PLTY, SBWXY, SL  
CALC-CALC, OCC SLTY, V  
SFT-FRM.

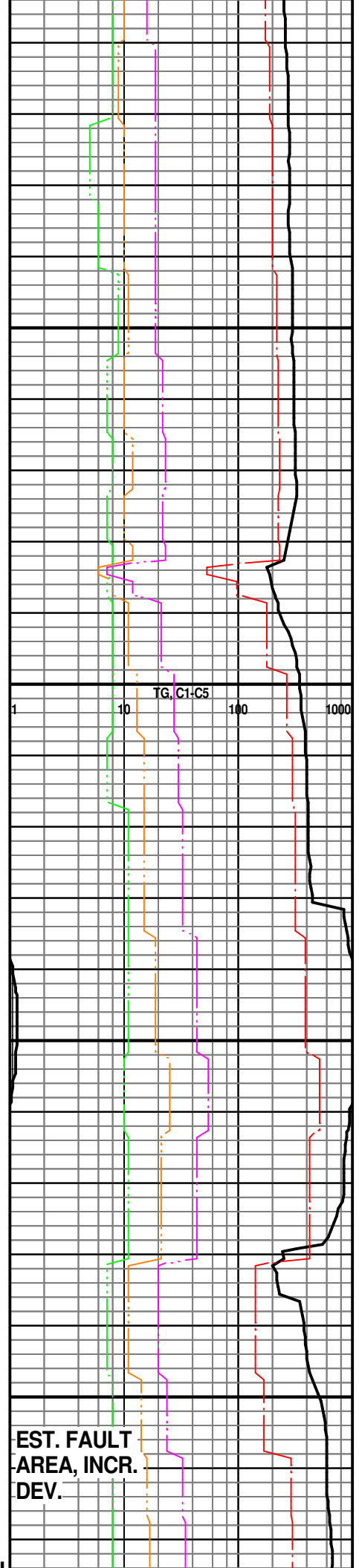
SH- GY-LT GY, SME DK BRN,  
BLKY-PLTY, SBWXY, SL  
CALC-CALC, OCC SLTY, V  
SFT-FRM.

SH- GY-LT GY, SME DK BRN,  
BLKY-PLTY, SBWXY, SL  
CALC-CALC, OCC SLTY, V  
SFT-FRM.

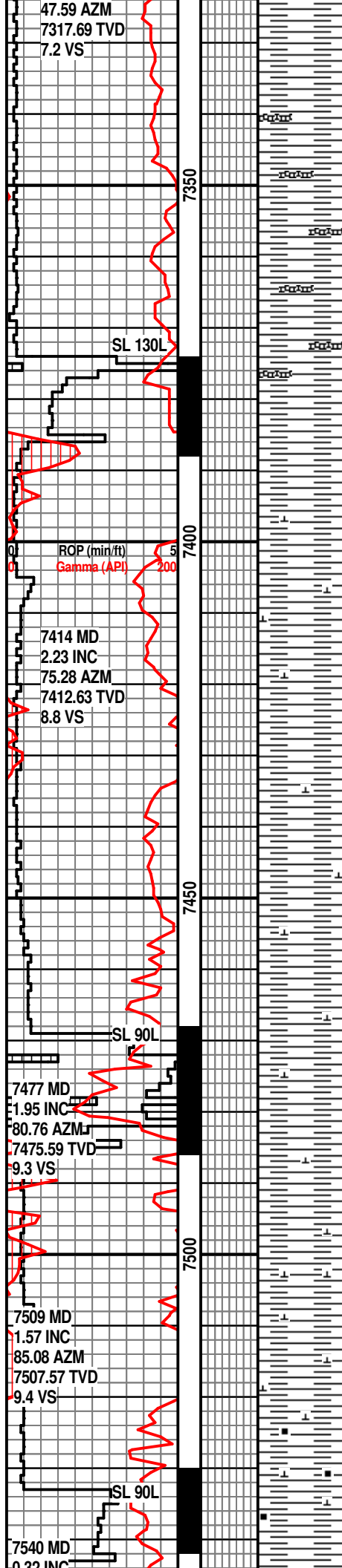
SH- GY-LT GY, SME DK BRN,  
BLKY-PLTY, SBWXY, CALC,  
SFT-FRM.

SH- GY-LT GY, SME DK BRN,  
BLKY-PLTY, SBWXY, CALC, V  
SFT-FRM.

SH- GY-LT GY, SME DK BRN,  
BLKY-PLTY, SBWXY, CALC, V  
SFT-FRM.







EST. TOP OF SHARON  
SPRINGS AT. 7340'

SH- GY-DK GY, OCC DK BRN,  
BLKY-PLTY, SBWXY, CALC, V  
SFT-FRM. W/ ABNDT BENT- LT  
GY-LT BRN/CRM.

SH- GY-DK GY, OCC DK BRN,  
BLKY-PLTY, SBWXY, CALC, V  
SFT-FRM. W/ ABNDT BENT- LT  
GY-LT BRN/CRM.

SH- GY-DK GY, BLKY-PLTY,  
SBWXY, INCR CALC, SFT-FRM.

POSS. TOP OF  
NIOBRARA AT 7405'.

SH- GY-DK GY, BLKY-PLTY,  
SBWXY, V CALC, SFT-FRM.

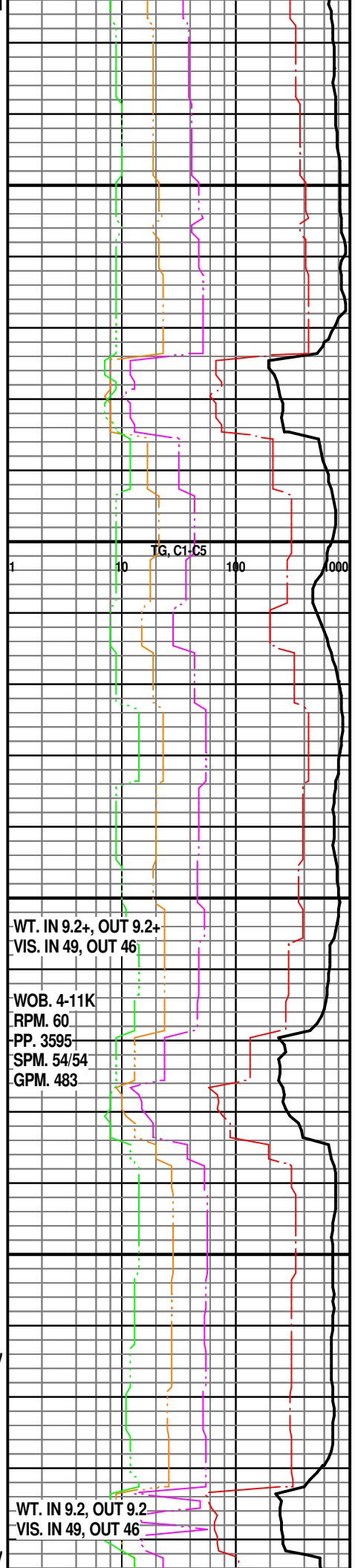
SH- GY-DK GY, BLKY-PLTY,  
SBWXY, V CALC, SFT-FRM.

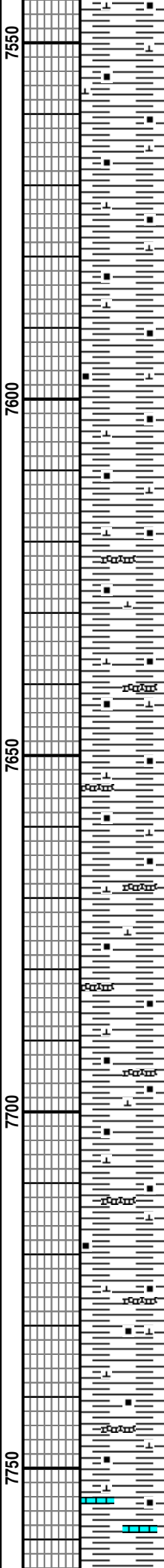
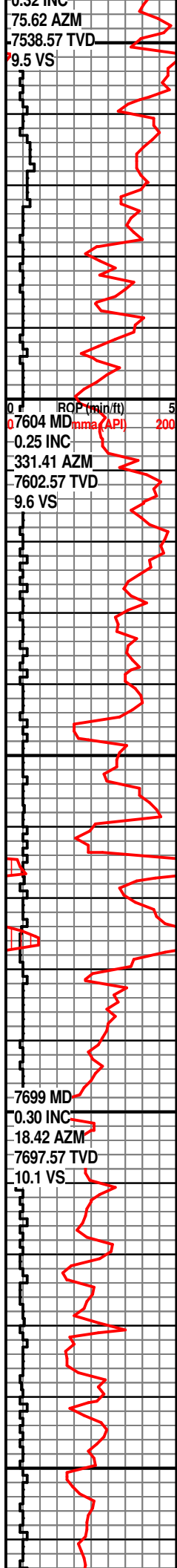
SH- GY-DK GY, BLKY-PLTY,  
SBWXY, V CALC-LMY IN PT,  
FRM.

SH- GY-DK GY, BLKY-PLTY,  
SBWXY, V CALC-LMY IN PT,  
FRM.

SH- GY-DK GY, BLKY-PLTY,  
SBWXY, SME CALC FL FRAC, V  
CALC-LMY, SFT-FRM.

SH- GY-DK GY, BLKY-PLTY,  
SBWXY, SME CALC FL FRAC, V





CALC-LMY, CARB, SFT-FRM.

SH- GY-DK GY, BLKY-PLTY,  
SBWXY, SME CALC FL FRAC, V  
CALC-LMY, CARB, SFT-FRM.

SH- GY-DK GY, BLKY-PLTY,  
SBWXY, SME CALC FL FRAC, V  
CALC-LMY, CARB, SFT-FRM.

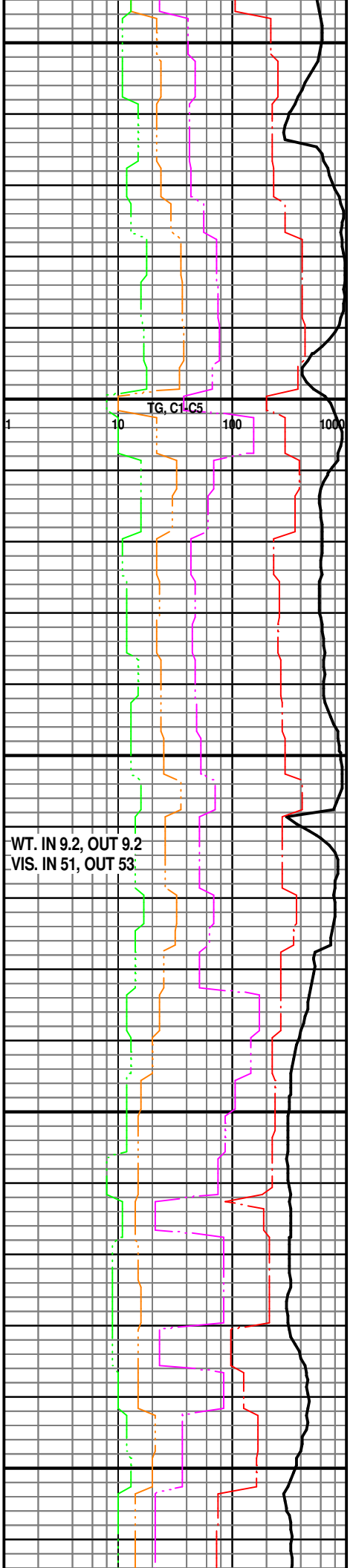
SH- GY-DK GY, BLKY-PLTY,  
SBWXY, SME CALC FL FRAC, V  
CALC-LMY, CARB, SFT-FRM,  
TR BENT.

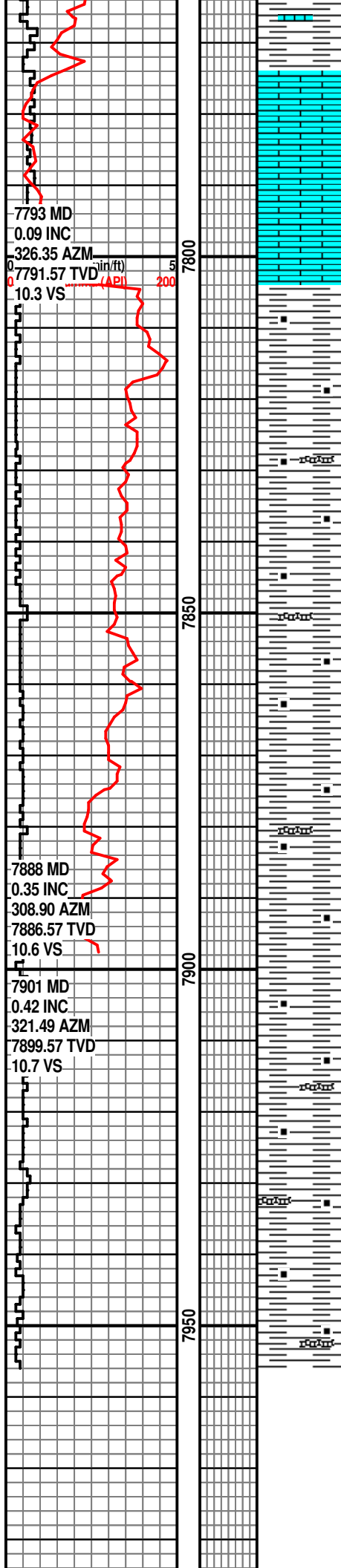
SH- GY-DK GY, BLKY-PLTY,  
SBWXY, SME CALC FL FRAC, V  
CALC-LMY, CARB, SFT-FRM,  
TR BENT.

SH- GY-DK GY, BLKY-PLTY,  
SBWXY, SME CALC FL FRAC, V  
CALC-LMY, CARB, SFT-FRM,  
TR BENT.

SH- GY-DK GY, BLKY-PLTY,  
SBWXY, SME CALC FL FRAC, V  
CALC-LMY, CARB, SFT-FRM,  
TR BENT.

SH- GY-DK GY, BLKY-PLTY,  
SBWXY, SME CALC FL FRAC, V  
CALC-LMY, CARB, SFT-FRM,  
TR BENT & LS- LTGY-WH,  
MICXLN, HD, DNS.





## SAMPLE TOP FORT HAYS 7774.

LS- LTGY-WH, MICXLN, HS DNS.

## SAMPLE TOP CARLISLE 7804.

SH- DKGY-GY, BLKY-PLTY,  
SWXY, SL CALC, CARB,  
SFT-FRM, TR BENT

SH- DKGY-GY, BLKY-PLTY,  
SWXY, SL CALC, CARB,  
SFT-FRM, TR BENT

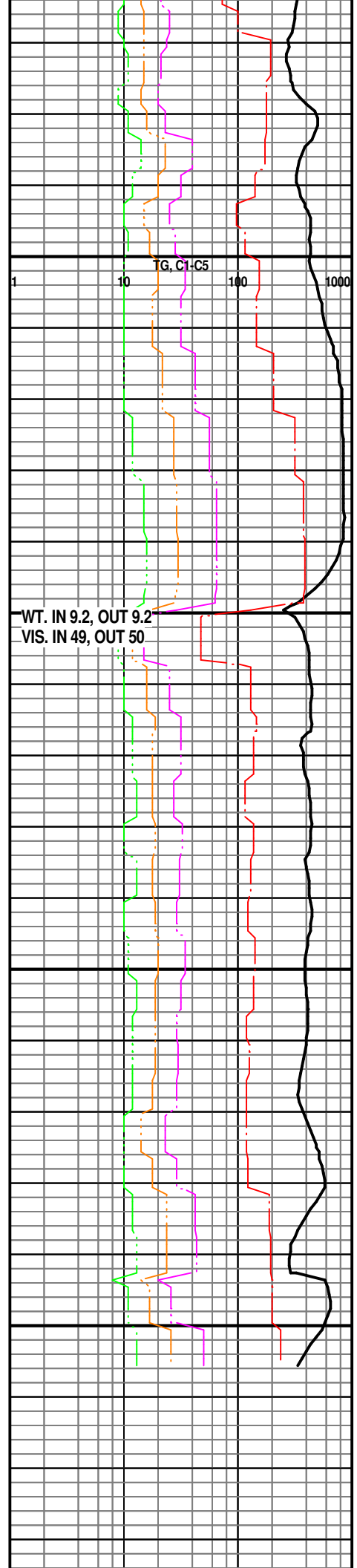
## SAMPLE TOP GREENHORN 7876.

SH- DKGY-GY, BLKY-PLTY,  
SWXY, SL CALC, CARB,  
SFT-FRM, TR BENT

SH- DKGY-GY, BLKY-PLTY,  
SWXY, SL CALC, CARB,  
SFT-FRM, TR BENT

SH- DKGY-GY, BLKY-PLTY,  
SWXY, SL CALC, CARB,  
SFT-FRM, TR BENT

TD PILOT HOLE 7956  
2235 HRS 2/3/2013



[illegible]