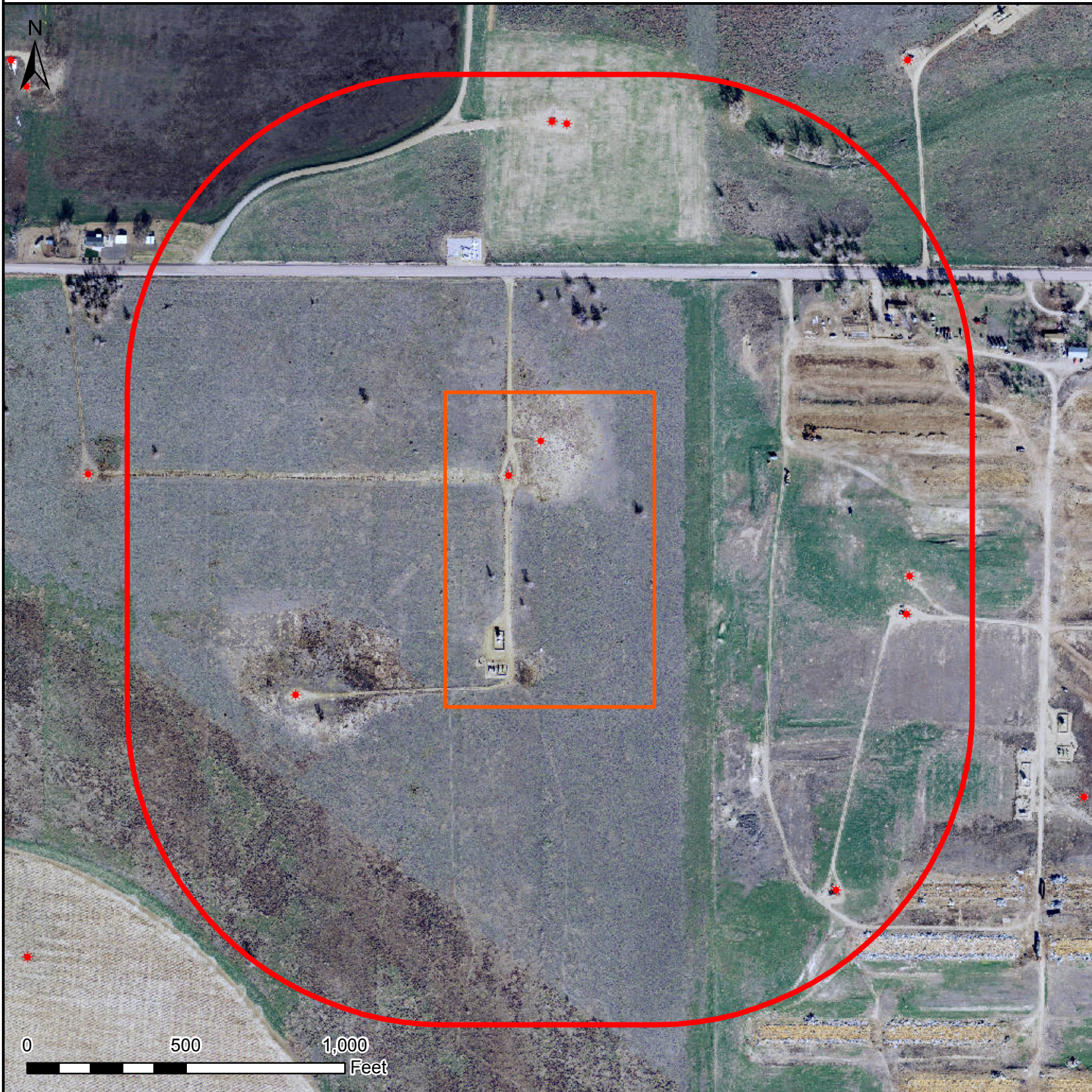





# HYDROLOGY MAP DEEPE 14N-27HZ



## Legend

-  Proposed pad
-  1000' buffer
-  Existing oil/gas well (COGCC)

## Nearest Surface Water Feature

No surface water features  
within 1000'.

All measurements are taken from  
the reference well location.



Date created: 10/3/2013  
Created by: APC Regulatory GIS  
Scale: 1:5,000  
Projection: NAD83 UTM 13N