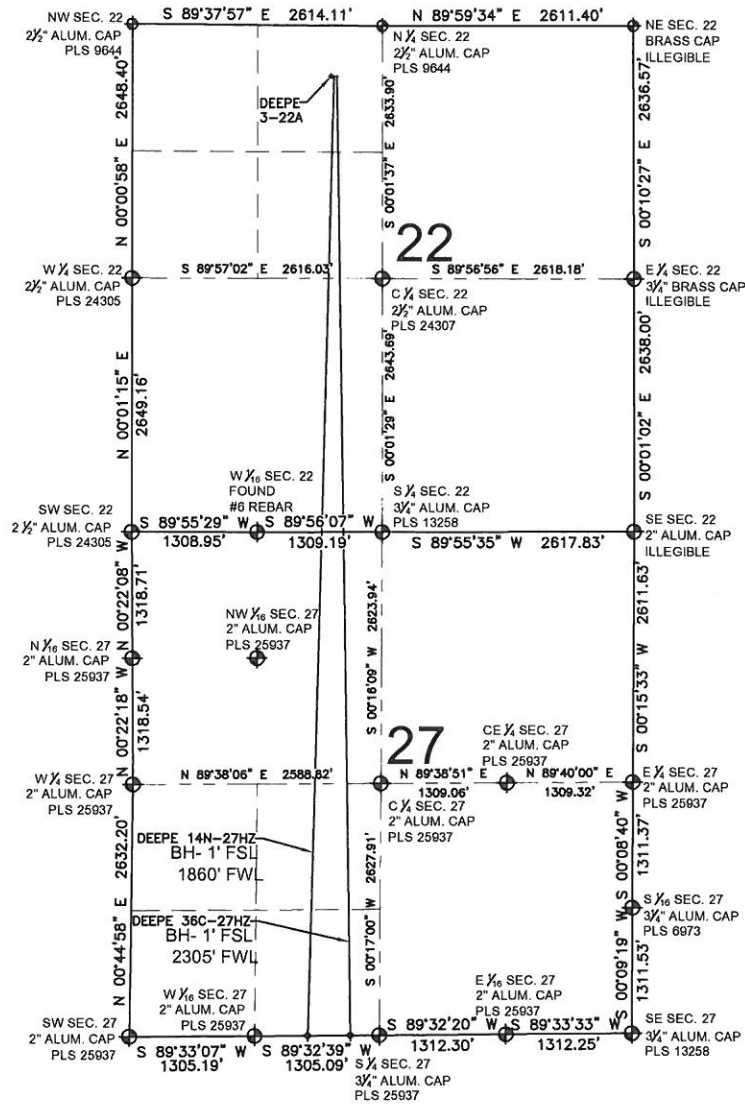


DEEPE 14N-27HZ MULTI-WELL PLAN

SECTION 22, TOWNSHIP 2 NORTH, RANGE 67 WEST, 6TH P.M.



NOTES:

DEEPE 14N-27HZ TO BE AT 531' FNL, 2110' FWL.
BOTTOM HOLE AT 1' FSL & 1860' FWL, SEC 27
DEEPE 36C-27HZ TO BE AT 531' FNL, 2140' FWL.
BOTTOM HOLE AT 1' FSL & 2305' FWL, SEC 27
DEEPE 3-22A IS 531' FNL, 2080' FWL.

LEGEND

= EXISTING MONUMENT
 = BOTTOM HOLE
 BH= BOTTOM HOLE
 = PROPOSED WELL
 = EXISTING WELL

PREPARED BY:

PFS llc
 Petroleum Field Services, LLC
 1801 W. 13th Ave.
 Denver, CO 80204

KERR-MCGEE OIL & GAS ONSHORE LP

FIELD DATE:
04-04-13

DRAWING DATE:
04-16-13

SURFACE LOCATION:

NE 1/4 NW 1/4, SEC. 22, T2N, R67W, 6TH P.M.
WELD COUNTY, COLORADO

