

T10N, R58W, 6th P.M.

WHITING OIL & GAS CORP.

2011 UELS Alum. Cap,
#17492
Lat: 40.830928°
Long: 103.880225°

2012 UELS Alum. Cap,
#28285, 0.3' High
Lat: 40.831072°
Long: 103.870636°

2012 UELS Alum. Cap,
#28285, 0.5' Below Ground
Lat: 40.831214°
Long: 103.861069°

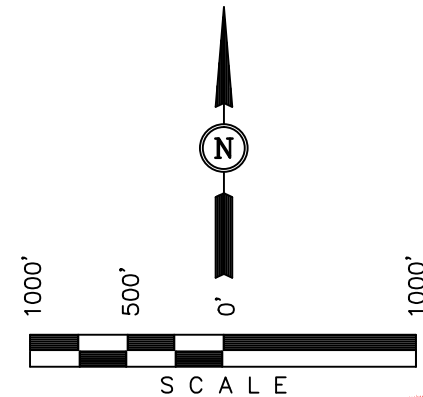
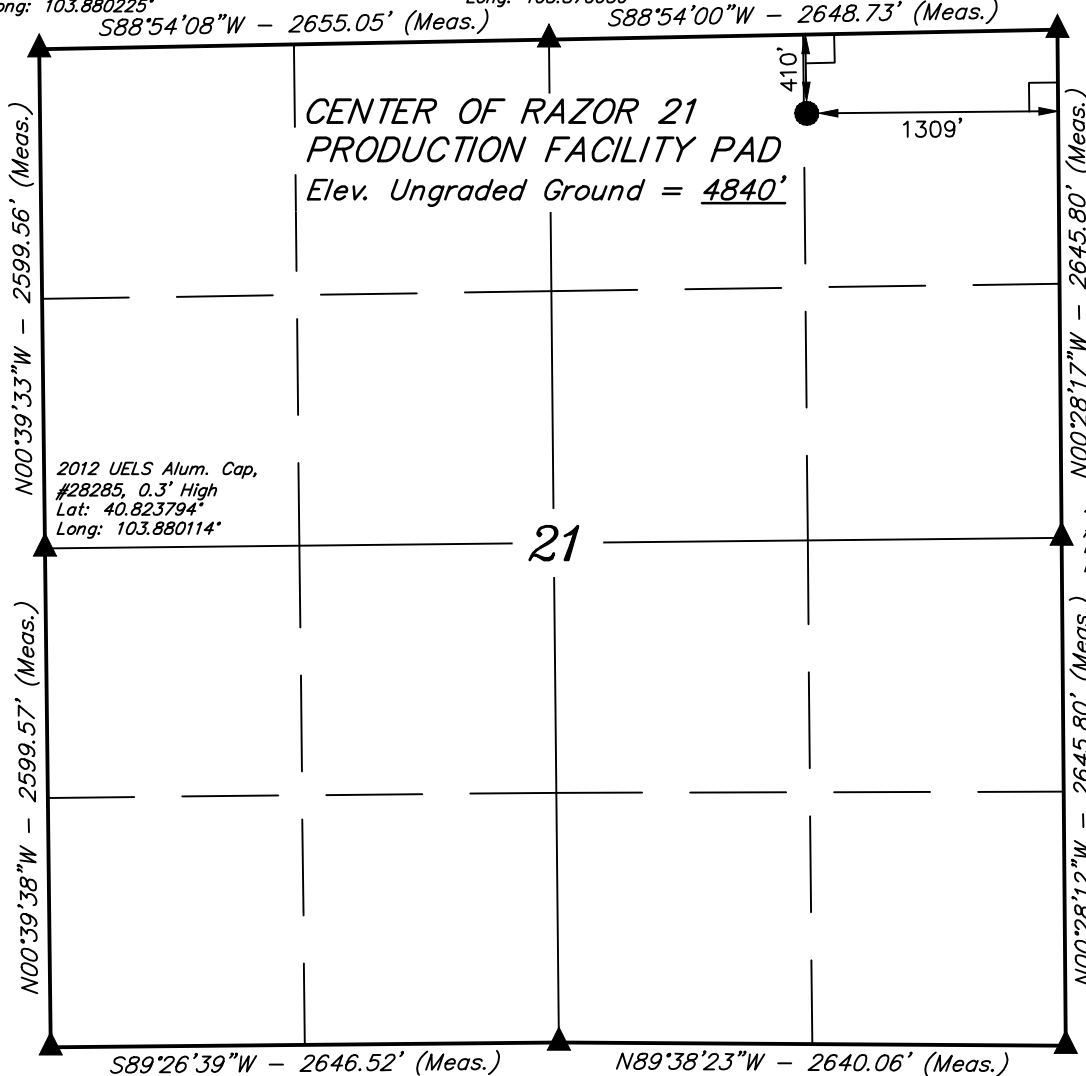
Production Facility location, CENTER OF RAZOR 21 PRODUCTION FACILITY PAD, located as shown in the NE 1/4 NE 1/4 of Section 21, T10N, R58W, 6th P.M., Weld County, Colorado.

BASIS OF ELEVATION

SPOT ELEVATION LOCATED AT THE NORTHEAST CORNER OF SECTION 15, T9N, R58W, 6th P.M. TAKEN FROM THE GATEHOOK SPRING, QUADRANGLE, COLORADO, WELD COUNTY, 7.5 MINUTE QUAD (TOPOGRAPHIC MAP) PUBLISHED BY THE UNITED STATES DEPARTMENT OF THE INTERIOR, GEOLOGICAL SURVEY. SAID ELEVATION IS MARKED AS BEING 4679 FEET.

BASIS OF BEARINGS

BASIS OF BEARINGS IS A G.P.S. OBSERVATION.



CERTIFICATION

THIS IS TO CERTIFY THAT THE ABOVE PLAT WAS PREPARED FROM FIELD NOTES OF ACTUAL SURVEYS MADE BY ME OR UNDER MY SUPERVISION AND THAT THE SAME ARE TRUE AND CORRECT TO THE BEST OF MY KNOWLEDGE AND BELIEF.

REGISTERED LAND SURVEYOR
REGISTRATION NO. 28285
STATE OF COLORADO 08-14-13

2010 UELS Alum. Cap,
#17492, Flush W/ Ground
Lat: 40.816664°
Long: 103.880000°

2012 UELS Alum. Cap,
0.5' High
Lat: 40.816736°
Long: 103.870442°

2010 UELS Alum. Cap,
0.5' Below Ground
Lat: 40.816692°
Long: 103.860906°

LEGEND:

- └─┘ = 90° SYMBOL
- = CENTER OF PRODUCTION FACILITY PAD.
- ▲ = SECTION CORNERS LOCATED.

PDOP = 1.3

NAD 83 (CENTER OF RAZOR 21 PRODUCTION FACILITY PAD)	
LATITUDE	= 40°49'48.06" (40.830017)
LONGITUDE	= 103°51'56.82" (103.865783)
NAD 27 (CENTER OF RAZOR 21 PRODUCTION FACILITY PAD)	
LATITUDE	= 40°49'48.11" (40.830031)
LONGITUDE	= 103°51'55.01" (103.865281)

UINTAH ENGINEERING & LAND SURVEYING
85 SOUTH 200 EAST - VERNAL, UTAH 84078
(435) 789-1017

SCALE 1" = 1000'	DATE SURVEYED: 08-12-13	DATE DRAWN: 08-14-13
PARTY Z.B. A.G. J.S.	REFERENCES G.L.O. PLAT	
WEATHER HOT	FILE WHITING OIL & GAS CORP.	