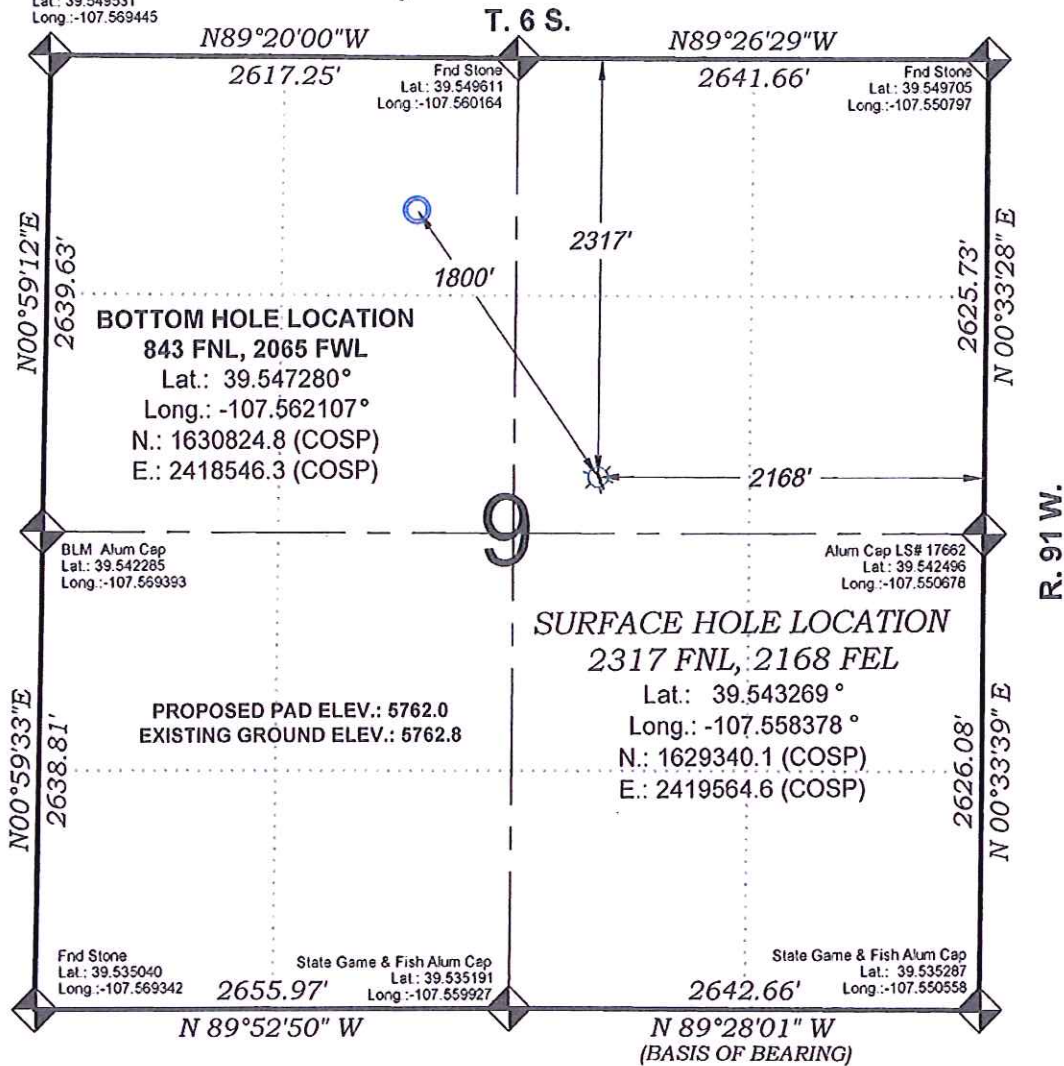


1999 Alum Cap LS# 13501
Lat.: 39.549531
Long.: -107.569445

State of Colorado KP 421-9



0 500 1000
GRAPHIC SCALE IN FEET
1 INCH = 1000 FEET

SURFACE HOLE LOCATION
2317 FNL, 2168 FEL
Lat.: 39.543269 °
Long.: -107.558378 °
N.: 1629340.1 (COSP)
E.: 2419564.6 (COSP)

PROPOSED PAD ELEV.: 5762.0
EXISTING GROUND ELEV.: 5762.8

SEE CONSTRUCTION LAYOUT
PLAT FOR VISIBLE IMPROVEMENTS
WITHIN 400' OF THIS LOCATION

SURVEYORS STATEMENT

I, MICHAEL J. LANGHORNE, A REGISTERED LAND SURVEYOR IN THE STATE OF COLORADO DO HEREBY CERTIFY THAT THE SURVEY SHOWN HEREON WAS PREPARED UNDER MY DIRECT SUPERVISION AND HAS BEEN STAKED ON THE GROUND AS SHOWN ON THE PLAT AND CHECKING THAT THIS MAP IS A TRUE REPRESENTATION THEREOF.

MICHAEL J. LANGHORNE, COLORADO REGISTRATION NO. 36572
FOR AND ON BEHALF OF
BOOKCLIFF SURVEY SERVICES, INC.

REFERENCES

- 1) 1887 GLO PLAT T. 6 S., R. 91 W., 6th P.M.
- 2) U.S.G.S. QUAD: NEW CASTLE, CO

136 East Third Street
Rifle, Colorado
81650 Ph. (970)
625-2720 Fax (970)
625-2773

BOOKCLIFF
Survey Services, Inc.

REVISED: 7/15/13

SURVEY DATE: 6/6/11
MAP DATE: 6/14/13
SCALE: 1" = 1000'
PLAT: 1 of 1
PROJECT: WPX Kokopelli

- LEGEND -

FIELD LOCATED SECTION
MONUMENTS AS DESCRIBED

FIELD SURVEYED
WELL LOCATION

CALCULATED BOTTOM
HOLE LOCATION

CALCULATED SECTION
CORNER LOCATION

NOTES

- 1) ELEVATIONS BASED ON N.A.V.D. 1988 PUBLISHED COORDINATES.
- 2) LATITUDES AND LONGITUDES ARE BASED ON NAD 83, PUBLISHED COORDINATES
- 3) STATE PLANE COORDINATES ARE BASED ON COLORADO CENTRAL ZONE, U.S. SURVEY FEET.
- 4) ELEVATION MASK SET TO 15"
- 5) GPS OPERATOR J. KIRKPATRICK, OBSERVED A PDOP OF 0.9 FOR SURVEY POINT NUMBER 133.
- 6) SURFACE AND BOTTOM HOLE LOCATIONS ARE MEASURED 90° FROM SECTION LINES.

WELL LOCATION PLAT Prepared for:
WPXENERGY WPX Energy Rocky Mountain, LLC

SW1/4 NE1/4, SECTION 9
T. 6 S., R. 91 W. of the 6th. P.M.
GARFIELD COUNTY, COLORADO