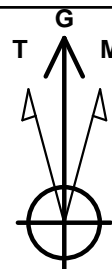
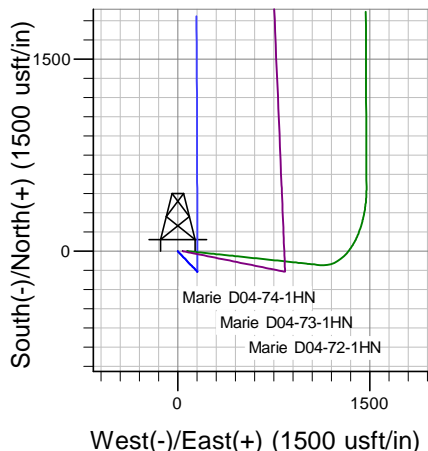
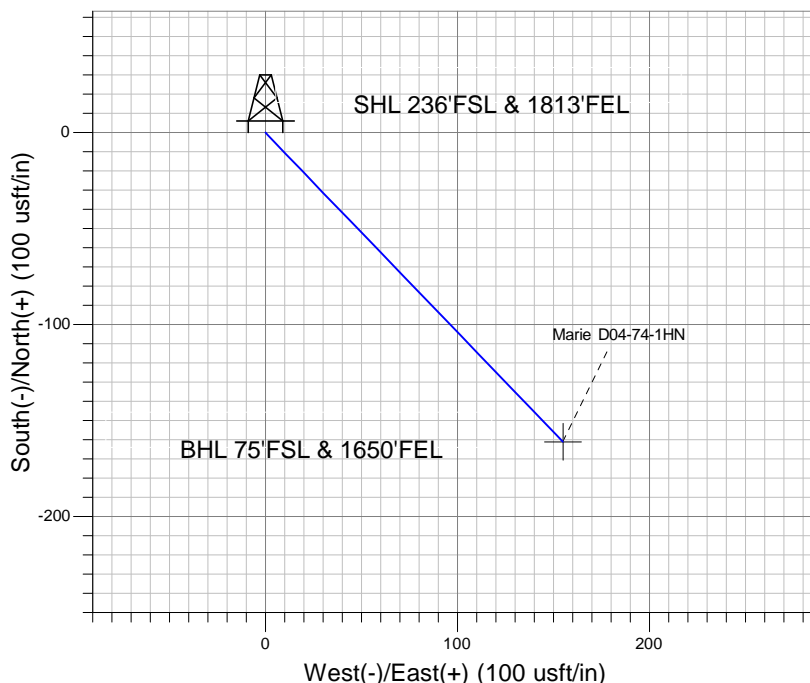
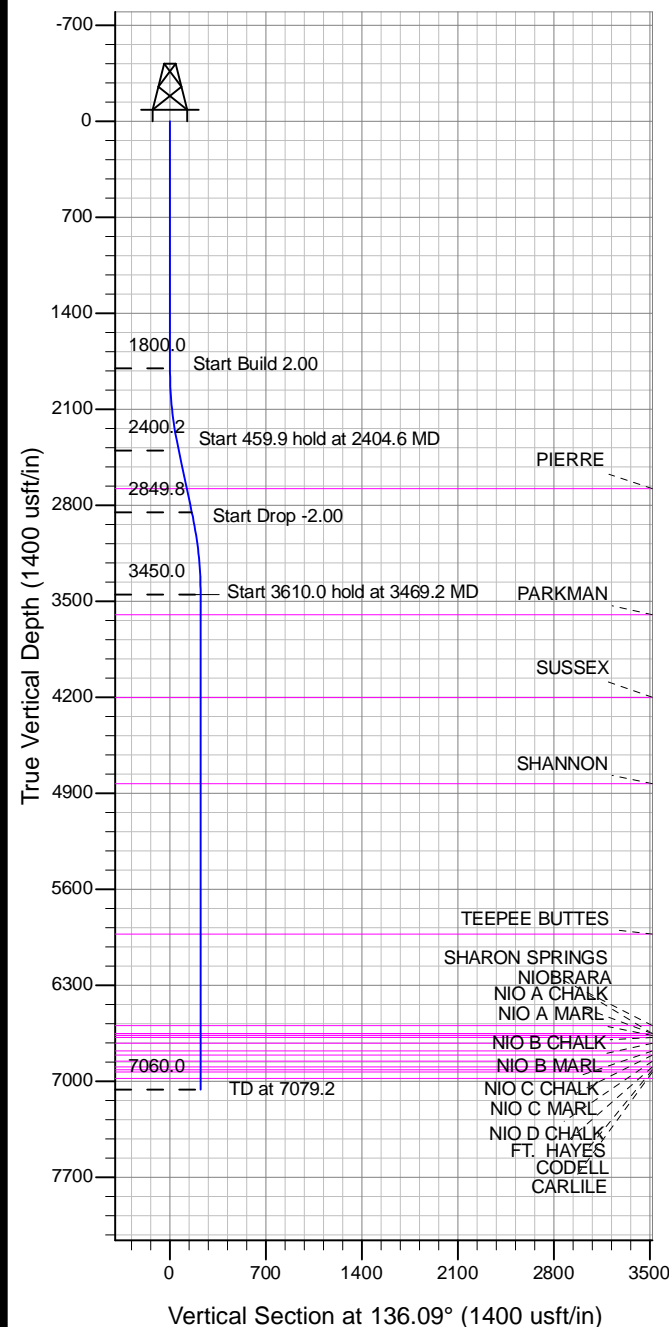


Project: Wattenberg Field
 Site: D (Sec.4-T03N-R64W) Weld County, CO
 Well: Marie D04-74-1HN
 Wellbore: Original Drilling
 Design: APD - Rev 2 (Pilot Hole)

Northern Region Drilling - Working

Geodetic System: US State Plane 1983
 Datum: North American Datum 1983
 Ellipsoid: GRS 1980
 Zone: Colorado Northern Zone
 System Datum: Mean Sea Level



Azimuths to Grid North
 True North: -0.61°
 Magnetic North: 7.80°
 Magnetic Field
 Strength: 52887.2snT
 Dip Angle: 66.90°
 Date: 6/25/2013
 Model: IGRF200510

Created by: Shailey Jewell
 Date: 12:42, July 26 2013
 Approved by:
 Date:

Well Details: Marie D04-74-1HN

Ground Level: 4720.0
 Northing: 1334566.44 Easting: 3264299.69 Latitude: 40.247910 Longitude: -104.553130

WELLBORE TARGET DETAILS (LAT/LONG)

Name	TVD	+N/-S	+E/-W	Latitude	Longitude	Shape
Marie D04-74-1HN PBHL 75'FSL, 1650'FEL	3450.0	-161.0	155.0	40.247464	-104.552581	

SECTION DETAILS

Sec	MD	Inc	Azi	TVD	+N/-S	+E/-W	Dleg	TFace	VSect	Target
1	0.0	0.00	0.00	0.0	0.0	0.0	0.00	0.00	0.0	
2	1800.0	0.00	0.00	1800.0	0.0	0.0	0.00	0.00	0.0	
3	2404.6	12.09	136.09	2400.2	-45.8	44.1	2.00	136.09	63.6	
4	2864.5	12.09	136.09	2849.8	-115.2	110.9	0.00	0.00	159.9	
5	3469.2	0.00	0.00	3450.0	-161.0	155.0	2.00	180.00	223.5	Marie D04-74-1HN PBHL 75'FSL, 1650'FEL
6	7079.2	0.00	0.00	7060.0	-161.0	155.0	0.00	0.00	223.5	