

Berry Petroleum Company
Piceance Asset
Parachute, Colorado

O36B 596 Interim Site Stabilization Plan

- Pit will be drained; liner removed and disposed of at a certified land fill.
- Soil samples from bottom of pit will be analyzed – upon meeting COGCC standards, pit will qualify for backfilling.
- Exterior slopes on east and south sides shall be pulled up and materials shall be pushed into existing pit.
- Exterior slopes shall be laid back at a minimum 3:1
- Spoil material that is being treated on site by land farming is remnants from drilling and completion operations from wells on this pad. The existing spoil material shall remain on site and we will continue to conduct land farming operations. This treatment will include adding organic materials, i.e., sawdust and adding a phosphorus amendment. The treated contaminated material meeting COGCC minimum standards will be blended with clean non-contaminated on-site materials and will be buried on location per COGCC standards.
- Quarterly sampling will be conducted until all land farming areas meet safe standards set and approved by the COGCC.
- Top soil will be spread over all slopes.
- Berry Petroleum Company has addressed and accommodated the wildlife concerns during the site stabilization of this pad.

Berry Petroleum Company
Piceance Asset
Parachute, Colorado

F01 697 Interim Site Stabilization Plan

- Pit will be drained; liner removed and disposed of at a certified land fill.
- Soil samples from bottom of pit will be analyzed – upon meeting COGCC standards, pit will qualify for backfilling.
- Exterior slopes on west, north and south sides shall be pulled up and materials shall be pushed into existing pit.
- Exterior slopes shall be laid back at a minimum 3:1
- Spoil material that is being treated on site by land farming is remnants from drilling and completion operations from wells on this pad. The existing spoil material shall remain on site and we will continue to conduct land farming operations. This treatment will include adding organic materials, i.e., sawdust and adding a phosphorus amendment. The treated contaminated material meeting COGCC minimum standards will be blended with clean non-contaminated on-site materials and will be buried on location per COGCC standards.
- Quarterly sampling will be conducted until all land farming areas meet safe standards set and approved by the COGCC.
- Top soil will be spread over all slopes.
- Berry Petroleum Company has addressed and accommodated the wildlife concerns during the site stabilization of this pad.

Berry Petroleum Company
Piceance Asset
Parachute, Colorado

C19 596 Interim Site Stabilization Plan

Current Plan

- Drilling cuttings will be on liner and bermed at the east end of the pad and will be landfarmed as described below.

Future Plan

- Pit will be drained; liner removed and disposed of at a certified land fill.
- Soil samples from bottom of pit will be analyzed – upon meeting COGCC standards, pit will qualify for backfilling.
- Exterior slopes on west, north and south sides shall be pulled up and materials shall be pushed into existing pit.
- Exterior slopes shall be laid back at a minimum 3:1
- Spoil material that is being treated on site by land farming is remnants from drilling and completion operations from wells on this pad. The existing spoil material shall remain on site and we will continue to conduct land farming operations. This treatment will include adding organic materials, i.e., sawdust and adding a phosphorus amendment. The treated contaminated material meeting COGCC minimum standards will be blended with clean non-contaminated on-site materials and will be buried on location per COGCC standards.
- Quarterly sampling will be conducted until all land farming areas meet safe standards set and approved by the COGCC.
- Top soil will be spread over all slopes.
- Berry Petroleum Company has addressed and accommodated the wildlife concerns during the site stabilization of this pad.

Berry Petroleum Company
Piceance Asset
Parachute, Colorado

C20 596 Interim Site Stabilization Plan
January 22, 2013

- Pit will be drained; liner removed and disposed of at a certified land fill.
- Soil samples from bottom of pit will be analyzed – if required, materials will be land farmed on site until meeting COGCC standards and then will be used for a portion of backfilling material for the pit.
- Pit will be also be filled with material on the pad that is being land farmed until it meets COGCC standards. This material will be blended with clean spoil from this pit and pad.
- Exterior slopes shall be laid back at a minimum 3:1
- Top soil will be spread over all slopes.
- Stormwater BMPs will be installed per plan.
- Berry Petroleum Company has addressed and accommodated the wildlife concerns during the site stabilization of this pad.

- i.e., sawdust, and a nitrogen or phosphorus amendment. Repeat process as necessary until COGCC standards are achieved.
- Summer 2013 - The treated contaminated material meeting COGCC standards will be blended with non-contaminated on-site materials and will be used to fill in the pit. The top three feet of backfill on the pit will be with non-contaminated materials only per COGCC standards.
 - Pending successful treatment of contaminated materials, the site stabilization on this pad will take place as follows:
 - Fall 2013 – Stabilize pad per plan drawing. Hillsides will be sloped back a minimum of 3:1, re-contoured slopes will be surface roughened, seeded and mulched, and stormwater BMPs will be installed per plan drawing. This phase will take place prior to Oct. 1, 2013.
 - Berry Petroleum Company has addressed and will accommodate the wildlife concerns of this pad during the site stabilization operations.

F06 696

The following were performed in the summer of 2012 per the Plan previously approved by Chevron:

- Construct a triangular shaped holding area on the wellhead side of the small pit with material from the existing spoil on location. The holding area will be lined with pit liner and will have a 4' berm on the perimeter. It will be graded to a 2% slope toward the small pit for de-watering. There will be a 10' wide and 2' high screen constructed of expanded metal and screening material. The holding area will contain approximately 1500 cubic yards of material. All activities will remain on existing location with no new disturbances. (See attached drawing).
- Remove net and fence around large pit. Leave fence and net over small end of pit. Install wildlife fence around spoil pile area.
- Bundle and roll liners with two excavators – to one end of pit.
- Water and mud in the large pit will be “squeezed” as the liner is rolled with the excavators.
- A large mud pump will pump the water and mud from the bottom of the large pit into the poly lined holding area (described above) where the water will drain into the small pit.
- Land farming will commence within the bermed and poly lined holding area.
- Analysis of samples of the material taken from the pit indicates that the land farming techniques that we have successfully employed on other nearby pads will be successful in treating the material on this location to approved COGCC standards. This treatment will include adding organic material, i.e., sawdust, adding a nitrogen amendment, and mixing with non-contaminated soil from this location. The treated contaminated material will be blended with non-contaminated on site materials and used to fill in the pit. The top three feet of backfill on the pit will be with non-contaminated materials only.
- After the mud and water are pumped out of the large pit, the liner will be removed and stored on site until documentation is received for disposal.
- The area below where the liner was removed will be excavated. The spoil from this excavation will be monitored to determine if hydrocarbons are present.
- Excavation will continue until to a point where it is determined there is no contamination.
- Remove net and fence from around small pit.
- Water from the small pit will be removed and disposed of off the site. Mud from the small pit will be removed and mixed with the spoil from the large pit. The liner will be removed and disposed with the liner from the large pit. The bottom of the small pit will

be examined for contamination. If contamination exists, the area will be excavated until non-contaminated soil is apparent.

- Quarterly sampling will be conducted until all land farming areas meet safe standards set and approved by the COGCC for mixing with interim reclamation and vegetation efforts on pad.
- Interim remediation plan of the pad will produce clean soil to fill in the pit, reduce the angles of the pad slopes to allow for re-vegetation (reseeding with an approved seed mix), and leave room on the pad surface to treat the spoils.
- Berry Petroleum Company has addressed and accommodated the wildlife concerns during the remediation and reclamation of this pad.

Berry Petroleum Company
Piceance Asset
Parachute, Colorado

J13 697 Interim Site Stabilization Plan

Phase I – June 27, 2012

- Phase II – September 20, 2012
- Exterior slopes on north, west, and south sides shall be pulled up and materials shall be pushed into existing pit.
- Exterior slopes shall be laid back at a minimum 3:1
- Spoil material that is being treated on site by land farming shall remain and we will continue to conduct land farming operations. This treatment will include adding organic materials, i.e., sawdust and adding a nitrogen amendment. The treated contaminated material meeting COGCC minimum standards will be blended with clean non-contaminated on-site materials and will be buried on location per COGCC standards.
- Quarterly sampling will be conducted until all land farming areas meet safe standards set and approved by the COGCC.
- Top soil will be spread over all slopes.
- Recognizing Chevron's request that all work be completed by September 1, 2012, our position is that we would prefer to perform revegetation operations after that date when it is cooler and there is a better chance of precipitation. Due to the extreme dry conditions this year, we believe a more realistic completion date would be October 1, 2012. We do expect to have the dirt work completed before September 1, 2012. Land farming operations will continue after that date until state standards are met or until snow accumulation prevents operations.
- Berry Petroleum Company has addressed and accommodated the wildlife concerns during the site stabilization of this pad.

Phase II – September 20, 2012

- During site reclamation on Phase I, approximately 6,500 cubic yards of material that appeared to be from drilling or completions operations pit spoils were uncovered.
- This newly discovered material was segregated from the material that is currently being land farmed (approx. 8,000 CY) and stacked on the pad site adjacent to the wellheads.
- This material was tested and was found to be within state standards for TPH (hydrocarbons) and SARs (salts), however a PAH was detected that failed the state standards: Benzo (a) pyrene 0.08, state standard is 0.022.
- To properly treat (land farm) this material, it is desirable to spread out in 2' to 3' high piles to allow as much contact with sunshine and atmosphere while being treated with fertilizer high in Nitrogen and Phosphorus and occasionally turned during land farming operations.
- As there is now not enough room to spread this material out and land farm it on site, Berry Petroleum Company is proposing that this new material be transported

to the C12 697 pad on Chevron estate for land farming operations. It will take approximately 10 days to load and haul this material to the C12 697 pad. Land farming operations will continue on the J13 697 pad and on the C12 697 pad simultaneously.

- Soils testing will be conducted quarterly (weather permitting) on each operation until state standards are met.
- Upon achievement of successful land farming, the spoils will be consolidated and buried on the J13 697 pad per state standards.

Berry Petroleum Company
Piceance Asset
Parachute, Colorado

J20 596 Interim Site Stabilization Plan
January 22, 2013

- Pit will be drained; liner removed and disposed of at a certified land fill.
- Soil samples from bottom of pit will be analyzed – upon meeting COGCC standards, pit will qualify for backfilling.
- Exterior slopes on east, west, and south sides shall be pulled up and materials shall be pushed into existing pit.
- Exterior slopes shall be laid back at a minimum 3:1
- Spoil material that is being treated on site by land farming is remnants from drilling and completion operations from wells on this pad. The existing spoil material shall remain on site and we will continue to conduct land farming operations. This treatment will include adding organic materials, i.e., sawdust and adding a phosphorus amendment. The treated contaminated material meeting COGCC minimum standards will be blended with clean non-contaminated on-site materials and will be buried on location per COGCC standards.
- Quarterly sampling will be conducted until all land farming areas meet safe standards set and approved by the COGCC.
- Top soil will be spread over all slopes.
- Berry Petroleum Company has addressed and accommodated the wildlife concerns during the site stabilization of this pad.

Berry Petroleum Company
Piceance Asset
Parachute, Colorado

O06 696 Interim Site Stabilization Plan
August 8, 2012

- Exterior slopes on north, west, and south sides shall be pulled up and materials shall be pushed into existing pit.
- Exterior slopes shall be laid back at a minimum 3:1
- Spoil material that is being treated on site by land farming is remnants from drilling and completion operations from wells on this pad. The existing spoil material shall remain on site and we will continue to conduct land farming operations. This treatment will include adding organic materials, i.e., sawdust and adding a nitrogen amendment. The treated contaminated material meeting COGCC minimum standards will be blended with clean non-contaminated on-site materials and will be buried on location per COGCC standards.
- Quarterly sampling will be conducted until all land farming areas meet safe standards set and approved by the COGCC.
- Top soil will be spread over all slopes.
- Recognizing Chevron's request that all work be completed by September 1, 2012, our position is that we would prefer to perform revegetation operations after that date when it is cooler and there is a better chance of precipitation. Due to the extreme dry conditions this year, we believe a more realistic completion date would be October 1, 2012. We do expect to have the dirt work completed before September 1, 2012. Land farming operations will continue after that date until state standards are met or until snow accumulation prevents operations.
- Berry Petroleum Company has addressed and accommodated the wildlife concerns during the site stabilization of this pad. Berry recognizes that this pad is in sensitive Sage Grouse habitat and have installed signage on the access road informing employees and contractors of that fact. Berry personnel have reviewed and will comply with the Mitigation Agreement – Berry 696-006 Pad; QLS No. 158349 dated April 1, 2009.

Berry Petroleum Company
Piceance Asset
Parachute, Colorado

J15 596 Interim Site Stabilization Plan

Current Plan

- Drilling cuttings will be bermed at the southeast end of the pad and will be landfarmed as described below.

Future Plan

- Exterior slopes on west, north and south sides shall be pulled up and materials shall be pushed into existing pit.
- Exterior slopes shall be laid back at a minimum 3:1
- Spoil material that is being treated on site by land farming is remnants from drilling and completion operations from wells on this pad. The existing spoil material shall remain on site and we will continue to conduct land farming operations. This treatment will include adding organic materials, i.e., sawdust and adding a phosphorus amendment. The treated contaminated material meeting COGCC minimum standards will be blended with clean non-contaminated on-site materials and will be buried on location per COGCC standards.
- Quarterly sampling will be conducted until all land farming areas meet safe standards set and approved by the COGCC.
- Top soil will be spread over all slopes.
- Berry Petroleum Company has addressed and accommodated the wildlife concerns during the site stabilization of this pad.

Berry Petroleum Company
Piceance Asset
Parachute, Colorado

M15 595 Interim Site Stabilization Plan

- Drilling cuttings will be bermed at the north end of the pad and will be landfarmed as described below.
- Exterior slopes on west, north and south sides shall be pulled up and materials shall be pushed into existing pit.
- Exterior slopes shall be laid back at a minimum 3:1
- Spoil material that is being treated on site by land farming is remnants from drilling and completion operations from wells on this pad. The existing spoil material shall remain on site and we will continue to conduct land farming operations. This treatment will include adding organic materials, i.e., sawdust and adding a phosphorus amendment. The treated contaminated material meeting COGCC minimum standards will be blended with clean non-contaminated on-site materials and will be buried on location per COGCC standards.
- Quarterly sampling will be conducted until all land farming areas meet safe standards set and approved by the COGCC.
- Top soil will be spread over all slopes.
- Berry Petroleum Company has addressed and accommodated the wildlife concerns during the site stabilization of this pad.

Berry Petroleum Company
Piceance Asset
Parachute, Colorado

A21 696 Interim Site Stabilization Plan

- Drilling cuttings will be bermed at the east and west ends of the pad and will be landfarmed as described below.
- Exterior slopes on west, north and south sides shall be pulled up and materials shall be pushed into existing pit.
- Exterior slopes shall be laid back at a minimum 3:1
- Spoil material that is being treated on site by land farming is remnants from drilling and completion operations from wells on this pad. The existing spoil material shall remain on site and we will continue to conduct land farming operations. This treatment will include adding organic materials, i.e., sawdust and adding a phosphorus amendment. The treated contaminated material meeting COGCC minimum standards will be blended with clean non-contaminated on-site materials and will be buried on location per COGCC standards.
- Quarterly sampling will be conducted until all land farming areas meet safe standards set and approved by the COGCC.
- Top soil will be spread over all slopes.
- Berry Petroleum Company has addressed and accommodated the wildlife concerns during the site stabilization of this pad.

Berry Petroleum Company
Piceance Asset
Parachute, Colorado

B10 696 Interim Site Stabilization Plan

- Pit will be drained, net, fence, and liner removed. Liner will be taken to an approved land fill for disposal.
- Drilling cuttings will be bermed at the south and west ends of the pad and will be landfarmed as described below.
- Exterior slopes on west, east, and south sides shall be pulled up and materials shall be pushed into existing pit.
- Exterior slopes shall be laid back at a minimum 3:1
- Spoil material that is being treated on site by land farming is remnants from drilling and completion operations from wells on this pad. The existing spoil material shall remain on site and we will continue to conduct land farming operations. This treatment will include adding organic materials, i.e., sawdust and adding a phosphorus amendment. The treated contaminated material meeting COGCC minimum standards will be blended with clean non-contaminated on-site materials and will be buried on location per COGCC standards.
- Quarterly sampling will be conducted until all land farming areas meet safe standards set and approved by the COGCC.
- Top soil will be spread over all slopes.
- Berry Petroleum Company has addressed and accommodated the wildlife concerns during the site stabilization of this pad.

Berry Petroleum Company
Piceance Asset
Parachute, Colorado

K15 696 Interim Site Stabilization Plan

- Pit will be drained, net, fence, and liner removed. Liner will be taken to an approved land fill for disposal.
- Drilling cuttings will be bermed at the south and west ends of the pad and will be landfarmed as described below.
- Exterior slopes on west, east, and south sides shall be pulled up and materials shall be pushed into existing pit.
- Exterior slopes shall be laid back at a minimum 3:1
- Spoil material that is being treated on site by land farming is remnants from drilling and completion operations from wells on this pad. The existing spoil material shall remain on site and we will continue to conduct land farming operations. This treatment will include adding organic materials, i.e., sawdust and adding a phosphorus amendment. The treated contaminated material meeting COGCC minimum standards will be blended with clean non-contaminated on-site materials and will be buried on location per COGCC standards.
- Quarterly sampling will be conducted until all land farming areas meet safe standards set and approved by the COGCC.
- Top soil will be spread over all slopes.
- Berry Petroleum Company has addressed and accommodated the wildlife concerns during the site stabilization of this pad.

Berry Petroleum Company
Piceance Asset
Parachute, Colorado

L15 696 Interim Site Stabilization Plan

- Drilling cuttings will be bermed at the south end and the central east portion of the pad and will be landfarmed as described below.
- Exterior slopes on west and south sides shall be pulled up and materials shall be pushed into existing pit.
- Exterior slopes shall be laid back at a minimum 3:1
- Spoil material that is being treated on site by land farming is remnants from drilling and completion operations from wells on this pad. The existing spoil material shall remain on site and we will continue to conduct land farming operations. This treatment will include adding organic materials, i.e., sawdust and adding a phosphorus amendment. The treated contaminated material meeting COGCC minimum standards will be blended with clean non-contaminated on-site materials and will be buried on location per COGCC standards.
- Quarterly sampling will be conducted until all land farming areas meet safe standards set and approved by the COGCC.
- Top soil will be spread over all slopes.
- Berry Petroleum Company has addressed and accommodated the wildlife concerns during the site stabilization of this pad.

2012 Land Farm Treatment Plan

10/31/2012

Garden Gulch

Pad Name	Spoils Status - High Contents	Land Farm Treatment
C20 596	TPH	Treat with Nitrogen
J20 596	PAH	Treat with Phosphorus
O29 596	PAH	Treat with Phosphorus
C19 596	PAH, SAR	Treat with Phosphorus
F01 697	PAH	Treat with Phosphorus
F06 696	TPH, PAH, SAR	Treat with Nitrogen and Phosphorus
O06 696	TPH, PAH	Treat with Nitrogen and Phosphorus
J13 697	TPH, PAH	After moving, treat with Nitrogen and Phosphorus

Valley

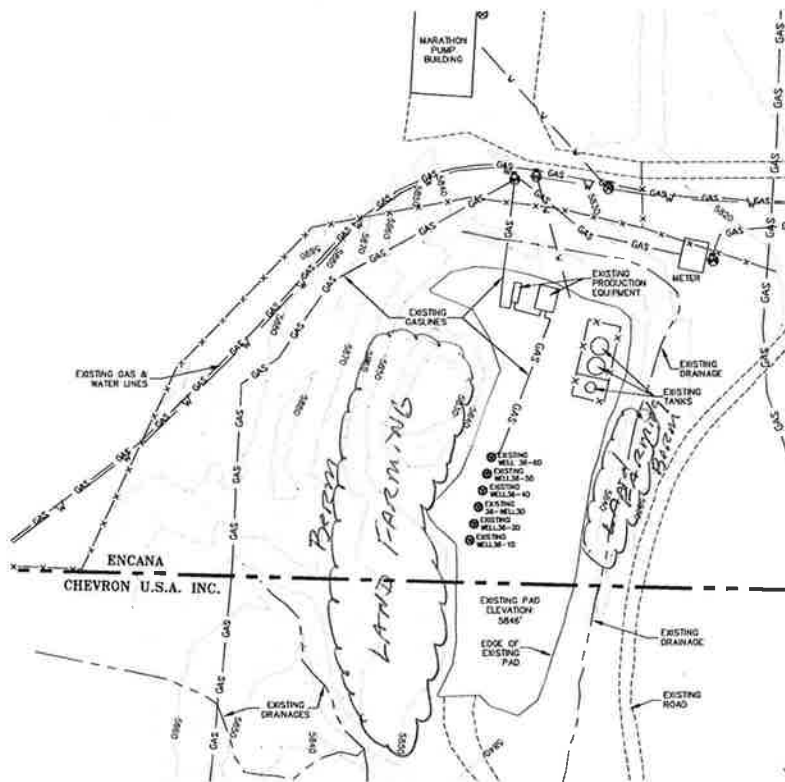
Pad Name	Spoils Status - High Contents	Land Farm Treatment
O36B 596	TPH, SAR	Spread out into pit and treat with Nitrogen

Long Ridge

Pad Name	Spoils Status - High Contents	Land Farm Treatment
M15 595	TPH, PAH, SAR	Treat with Nitrogen and Phosphorus
J15 595	TPH, PAH, SAR	Treat with Nitrogen and Phosphorus

Old Mountain

Pad Name	Spoils Status - High Contents	Land Farm Treatment
C10 696	PAH	Spread out and treat with Phosphorus
B10 696	PAH	Spread out spoil pile & treat with Phosphorus
K15 696	PAH	Treat with Phosphorus
L15 696	PAH, SAR	Treat with Phosphorus
A21 696	PAH	Treat with Phosphorus



EXISTING PAD CONDITIONS
CHEVRON 036B PAD
SECTION 36, T. 5 S., R. 96 W.

CONSTRUCTION SURVEYS, INC.
2012 SUNRISE BLVD.
SILT, CO 81652
970-276-5753

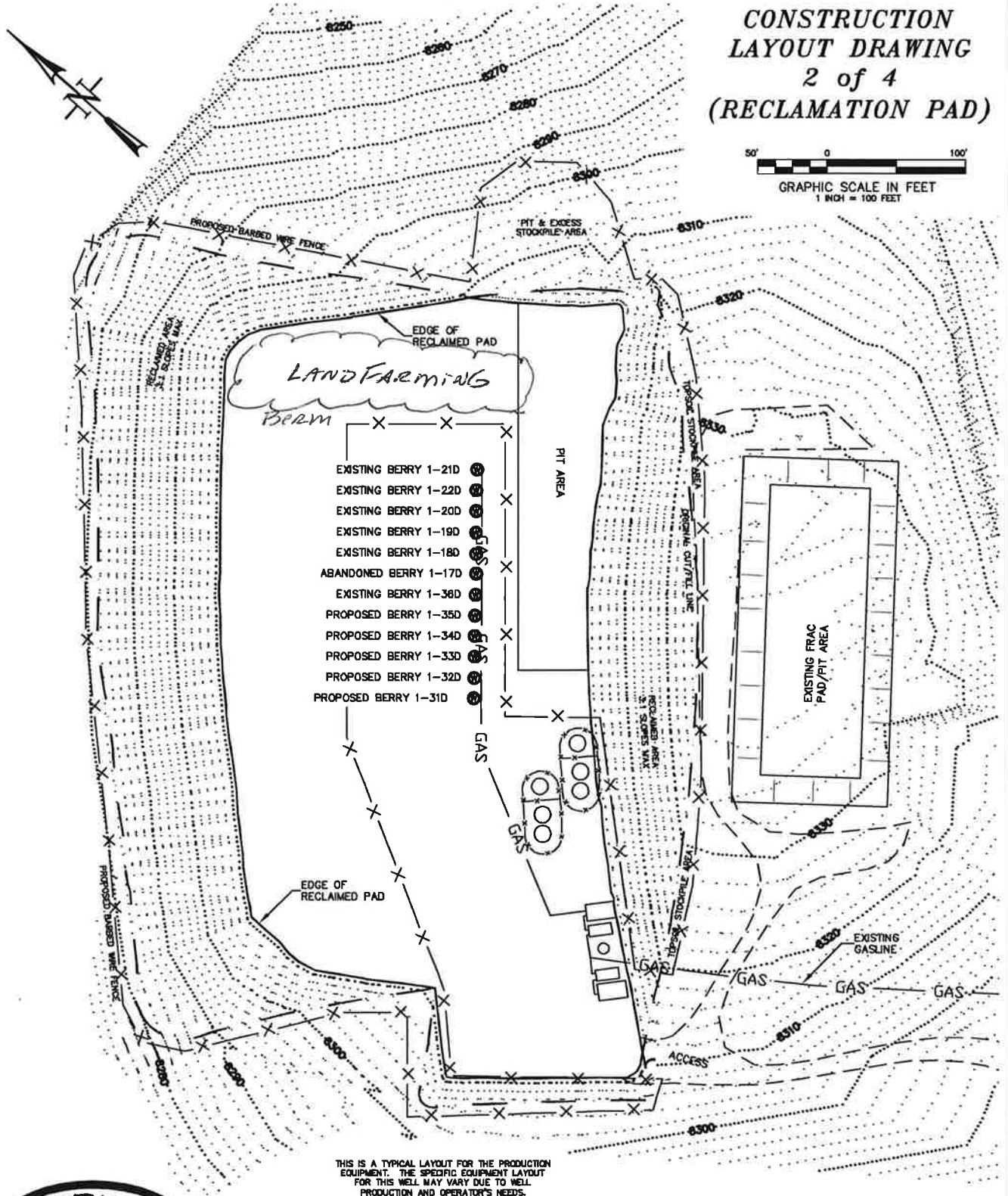
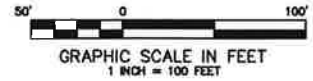


PREPARED FOR:
BERRY PETROLEUM COMPANY

SURVEYED BY: IM	DRAFTED BY: IM	CHECKED BY: CB
DATE: 5/21/2012	DWG: BERRY\2006\CHEVRON 036B-REV.dwg	

SHEET 1 OF 2

CONSTRUCTION LAYOUT DRAWING 2 of 4 (RECLAMATION PAD)



THIS IS A TYPICAL LAYOUT FOR THE PRODUCTION EQUIPMENT. THE SPECIFIC EQUIPMENT LAYOUT FOR THIS WELL MAY VARY DUE TO WELL PRODUCTION AND OPERATOR'S NEEDS.



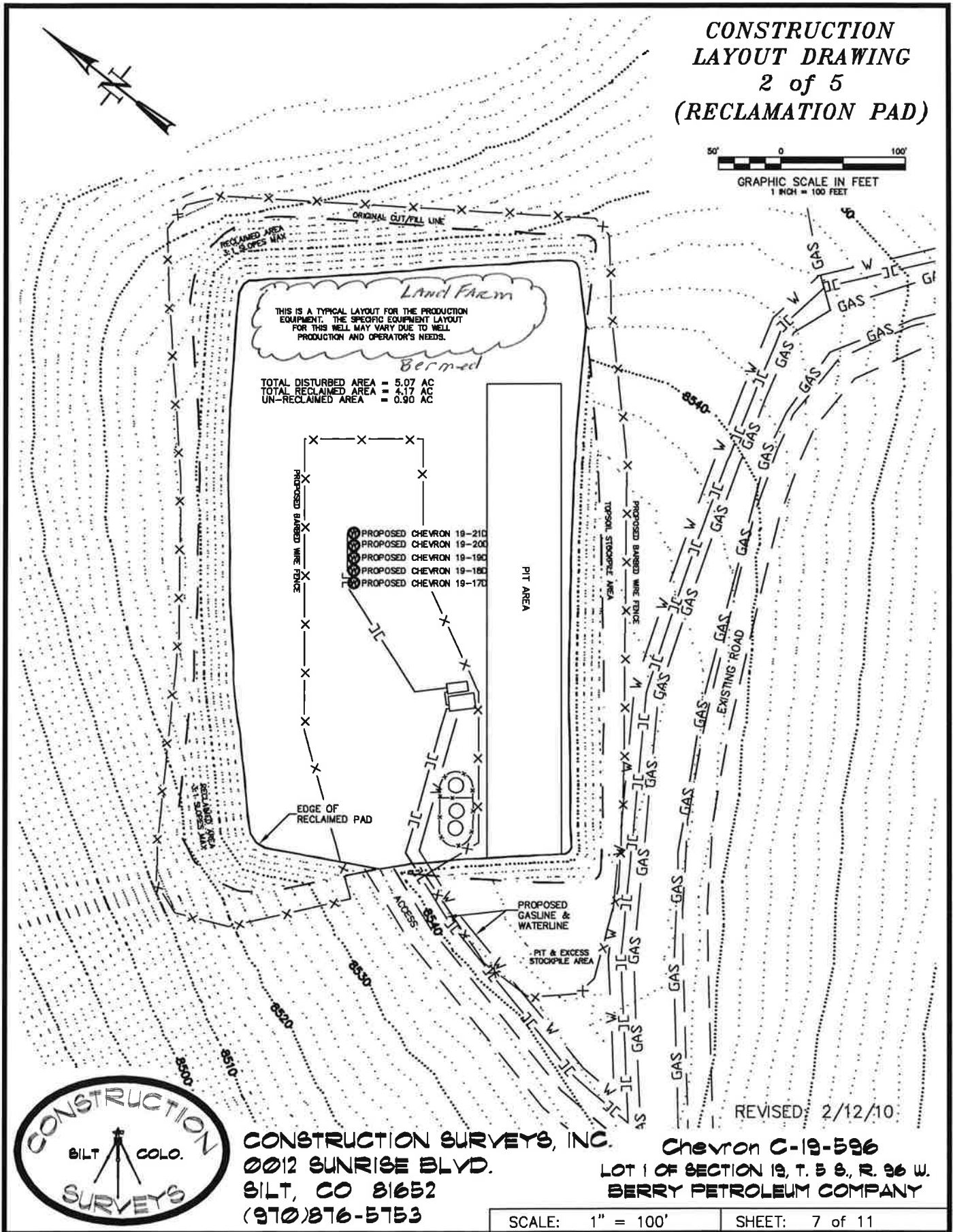
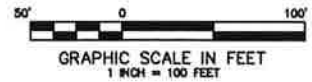
CONSTRUCTION SURVEYS, INC.
0012 SUNRISE BLVD.
BILT, CO 81652
(970)876-5753

Berry F-01-697
LOT 10 OF SECTION 1, T. 6 S., R. 97 W.
BERRY PETROLEUM COMPANY

SCALE: 1" = 100'

SHEET: 7 of 10

CONSTRUCTION LAYOUT DRAWING 2 of 5 (RECLAMATION PAD)



CONSTRUCTION SURVEYS, INC.
0012 SUNRISE BLVD.
BILT, CO 81652
(970)876-5753

Chevron C-19-596
LOT 1 OF SECTION 19, T. 5 S., R. 96 W.
BERRY PETROLEUM COMPANY

SCALE: 1" = 100'

SHEET: 7 of 11

SITE STABILIZATION PLAN

GRAPHIC SCALE IN FEET
1 INCH = 80 FEET



If necessary, sediment trap with rock armored inlets and outlets installed at low point in fill slope toe trench

If possible, utilize existing perimeter control (toe trench).

If necessary, sediment trap with rock armored inlets and outlets installed at low point in fill slope toe trench

Construct a toe trench for perimeter controls at the disturbance limits.

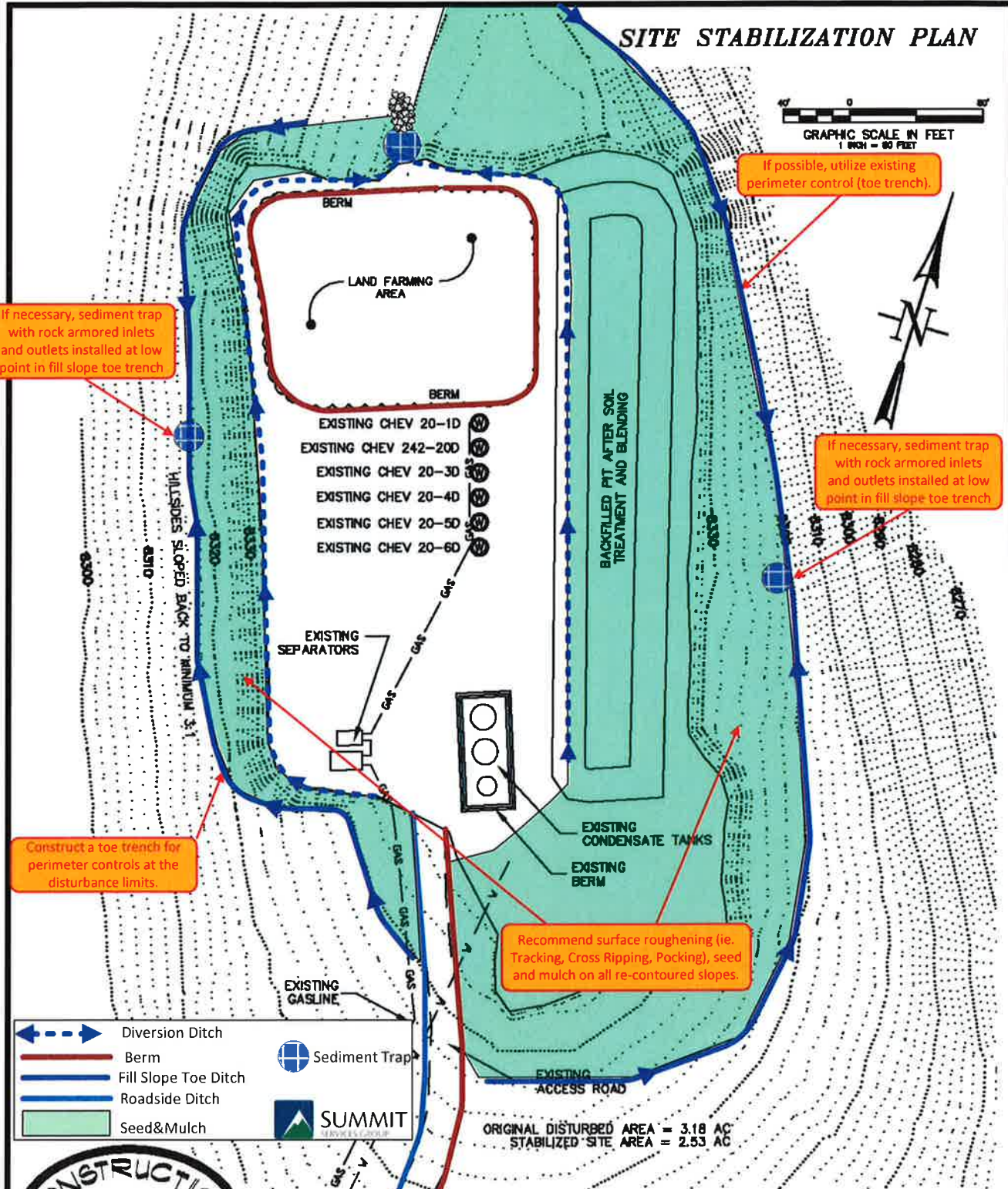
Recommend surface roughening (ie. Tracking, Cross Ripping, Pocking), seed and mulch on all re-contoured slopes.

- Diversion Ditch
- Berm
- Fill Slope Toe Ditch
- Roadside Ditch
- Seed & Mulch
- Sediment Trap
- SUMMIT



CONSTRUCTION SURVEYS, INC. Chevron C20-536
 0012 SUNRISE BLVD. NE 1/4 NW 1/4 OF SECTION 20, T. 5 S., R. 26 W.
 BILT, CO 81652 BERRY PETROLEUM COMPANY
 (970)876-5753
 DATE: 07/10/2012 SHEET: 1 OF 1

ORIGINAL DISTURBED AREA = 3.18 AC
 STABILIZED SITE AREA = 2.53 AC



INTERIM SITE STABILIZATION PLAT



GRAPHIC SCALE IN FEET
1 INCH = 100 FEET



EXISTING ROAD

ORIGINAL CUT/FILL LINE

TOTAL RECLAIMED AREA = 3.86 AC
UN-RECLAIMED AREA = 1.02 AC

LIMITS OF INTERIM
RECLAMATION

LAND FARMING
AREA

EXISTING CHEVRON
6-250 WELLHEAD

PIT & EXCESS
STOCKPILE AREA

BACKFILLED PIT AFTER SOIL
TREATMENT AND BLENDING

ORIGINAL CUT/FILL LINE

8240

LIMITS OF INTERIM RECLAMATION

EXISTING BERM

EXISTING TANKS

EXISTING SEPARATOR

EXISTING GAS VALVES

EXISTING GASLINES

EXISTING WATERLINES

RD GAS

RD GAS

RD GAS

RD GAS

RD GAS

RD GAS

RD GAS

RD GAS

RD GAS

RD GAS

RD GAS

RD GAS

RD GAS

RD GAS

RD GAS

RD GAS

RD GAS

RD GAS

RD GAS

RD GAS

RD GAS

RD GAS

RD GAS

RD GAS

RD GAS

RD GAS

RD GAS

RD GAS

RD GAS

RD GAS

RD GAS

RD GAS

RD GAS

RD GAS

RD GAS

RD GAS

RD GAS

RD GAS

RD GAS

RD GAS

RD GAS

RD GAS

RD GAS

RD GAS

RD GAS

RD GAS

RD GAS

RD GAS

RD GAS

RD GAS

RD GAS

RD GAS

RD GAS

RD GAS

RD GAS

RD GAS

RD GAS

RD GAS

RD GAS

RD GAS

RD GAS

RD GAS

RD GAS

RD GAS

RD GAS

RD GAS

RD GAS

RD GAS

RD GAS

RD GAS

RD GAS

RD GAS

RD GAS

RD GAS

RD GAS

RD GAS

RD GAS

RD GAS

RD GAS

RD GAS

RD GAS

RD GAS

RD GAS

RD GAS

RD GAS

RD GAS

RD GAS

RD GAS

RD GAS

RD GAS

RD GAS

RD GAS

RD GAS

RD GAS

RD GAS

RD GAS

RD GAS

RD GAS

RD GAS

RD GAS

RD GAS

RD GAS

RD GAS

RD GAS

RD GAS

RD GAS

RD GAS

RD GAS

RD GAS

RD GAS

RD GAS

RD GAS

RD GAS

RD GAS

RD GAS

RD GAS

RD GAS

RD GAS

RD GAS

RD GAS

RD GAS

RD GAS

RD GAS

RD GAS

RD GAS

RD GAS

RD GAS

RD GAS

RD GAS

RD GAS

RD GAS

RD GAS

RD GAS

RD GAS

RD GAS

RD GAS

RD GAS

RD GAS

RD GAS

RD GAS

RD GAS

RD GAS

RD GAS

RD GAS

RD GAS

RD GAS

RD GAS

RD GAS

RD GAS

RD GAS

RD GAS

RD GAS

RD GAS

RD GAS

RD GAS

RD GAS

RD GAS

RD GAS

RD GAS

RD GAS

RD GAS

RD GAS

RD GAS

RD GAS

RD GAS

RD GAS

RD GAS

RD GAS

RD GAS

RD GAS

RD GAS

RD GAS

RD GAS

RD GAS

RD GAS

RD GAS

RD GAS

RD GAS

RD GAS

RD GAS

RD GAS

RD GAS

RD GAS

RD GAS

RD GAS

RD GAS

RD GAS

RD GAS

RD GAS

RD GAS

RD GAS

RD GAS

RD GAS

RD GAS

RD GAS

RD GAS

RD GAS

RD GAS

RD GAS

RD GAS

RD GAS

RD GAS

RD GAS

RD GAS

RD GAS

RD GAS

RD GAS

RD GAS

RD GAS

RD GAS

RD GAS

RD GAS

RD GAS

RD GAS

RD GAS

RD GAS

RD GAS

RD GAS

RD GAS

RD GAS

RD GAS

RD GAS

RD GAS

RD GAS

RD GAS

RD GAS

RD GAS

RD GAS

RD GAS

RD GAS

RD GAS

RD GAS

RD GAS

RD GAS

RD GAS

RD GAS

RD GAS

RD GAS

RD GAS

RD GAS

RD GAS

RD GAS

RD GAS

RD GAS

RD GAS

RD GAS

RD GAS

RD GAS

RD GAS

RD GAS

RD GAS

RD GAS

RD GAS

RD GAS

RD GAS

RD GAS

RD GAS

RD GAS

RD GAS

RD GAS

RD GAS

RD GAS

RD GAS

RD GAS

RD GAS

RD GAS

RD GAS

RD GAS

RD GAS

RD GAS

RD GAS

RD GAS

RD GAS

RD GAS

RD GAS

RD GAS

RD GAS

RD GAS

RD GAS

Recommend surface roughening on the re-contoured slopes. (ie. Tracking, Cross Ripping, Pocking)

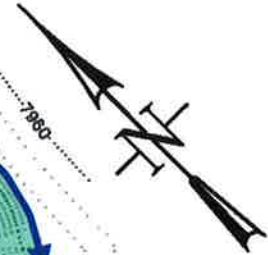


INC. Chevron J13-697
NW 1/4 BE 1/4 SECTION 13, T. 6 S., R. 97 W.
BERRY PETROLEUM COMPANY

SHEET: 1 OF 1

SITE STABILIZATION PLAN

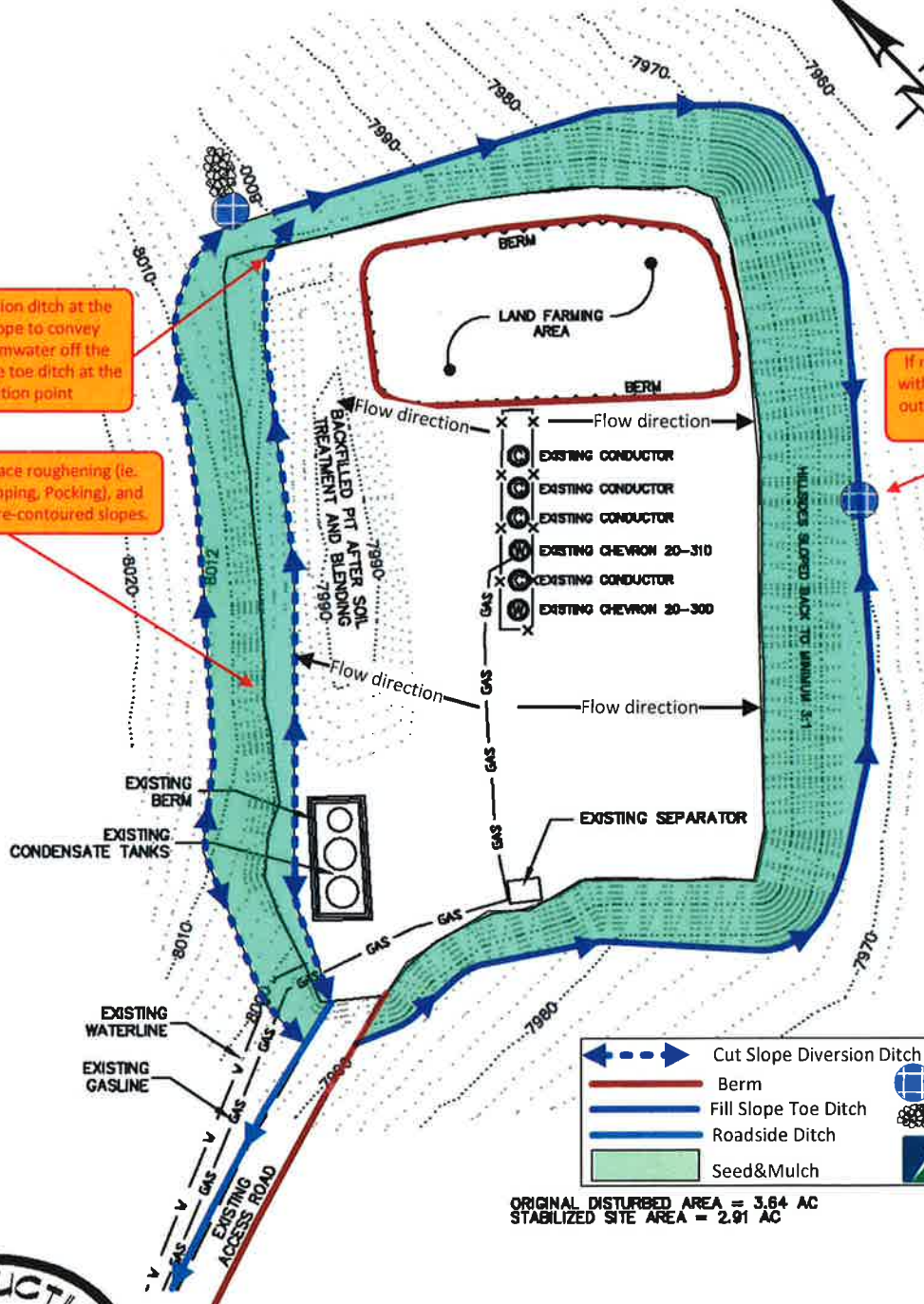
GRAPHIC SCALE IN FEET
1 INCH = 80 FEET



Construct a diversion ditch at the toe of the cut slope to convey accumulated stormwater off the pad surface into the toe ditch at the cut/fill transition point

Recommend surface roughening (ie. Tracking, Cross Ripping, Pocking), and seed/mulch on all re-contoured slopes.

If necessary, sediment trap with rock armored inlets and outlets installed at low point in fill slope toe ditch



- | Legend | |
|--------|---------------------------|
| | Cut Slope Diversion Ditch |
| | Berm |
| | Fill Slope Toe Ditch |
| | Roadside Ditch |
| | Seed & Mulch |
| | Sediment Trap |
| | Rock Armor |
| | SUMMIT |

ORIGINAL DISTURBED AREA = 3.64 AC
STABILIZED SITE AREA = 2.91 AC



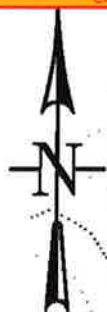
CONSTRUCTION SURVEYS, INC. Chevron J20-596
0012 SUNRISE BLVD. NW 1/4 8E 1/4 SECTION 20, T. 5 S., R. 96 W.
SILT, CO 81652 BERRY PETROLEUM COMPANY
(970)876-5753

DATE: 07/10/2012 SHEET: 1 OF 1

SITE STABILIZATION PLAN

GRAPHIC SCALE IN FEET
1 INCH = 80 FEET

If necessary, rock checks installed where steep grades exist.



Sediment trap with rock armored inlets and outlets installed at low point in fill slope toe trench.

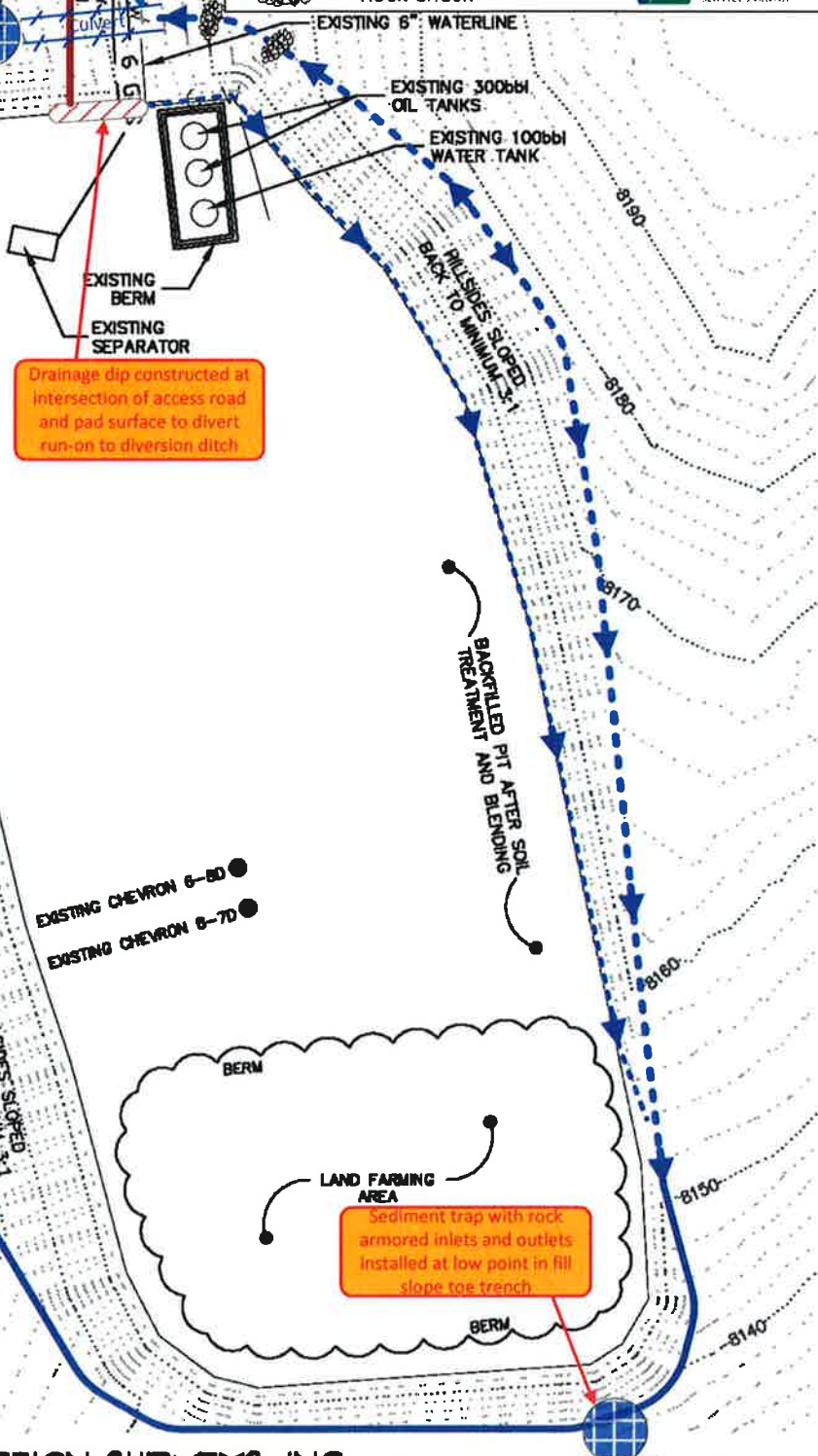
ORIGINAL DISTURBED AREA = 6.18 AC
STABILIZED SITE AREA = 3.11 AC



CONSTRUCTION SURVEYS, INC. CHEVRON O-06-696
0012 SUNRISE BLVD.
SILT, CO 81652
(970)876-5753

NW 1/4 SE 1/4 SECTION 6, T. 6 S., R. 26 W.
BERRY PETROLEUM COMPANY

- ← Cut Slope Diversion Ditch
- Fill Slope Toe Ditch
- Roadside Ditch
- Berm
- Rock Check
- ⊕ Sediment Trap
- ▨ Drainage Dip



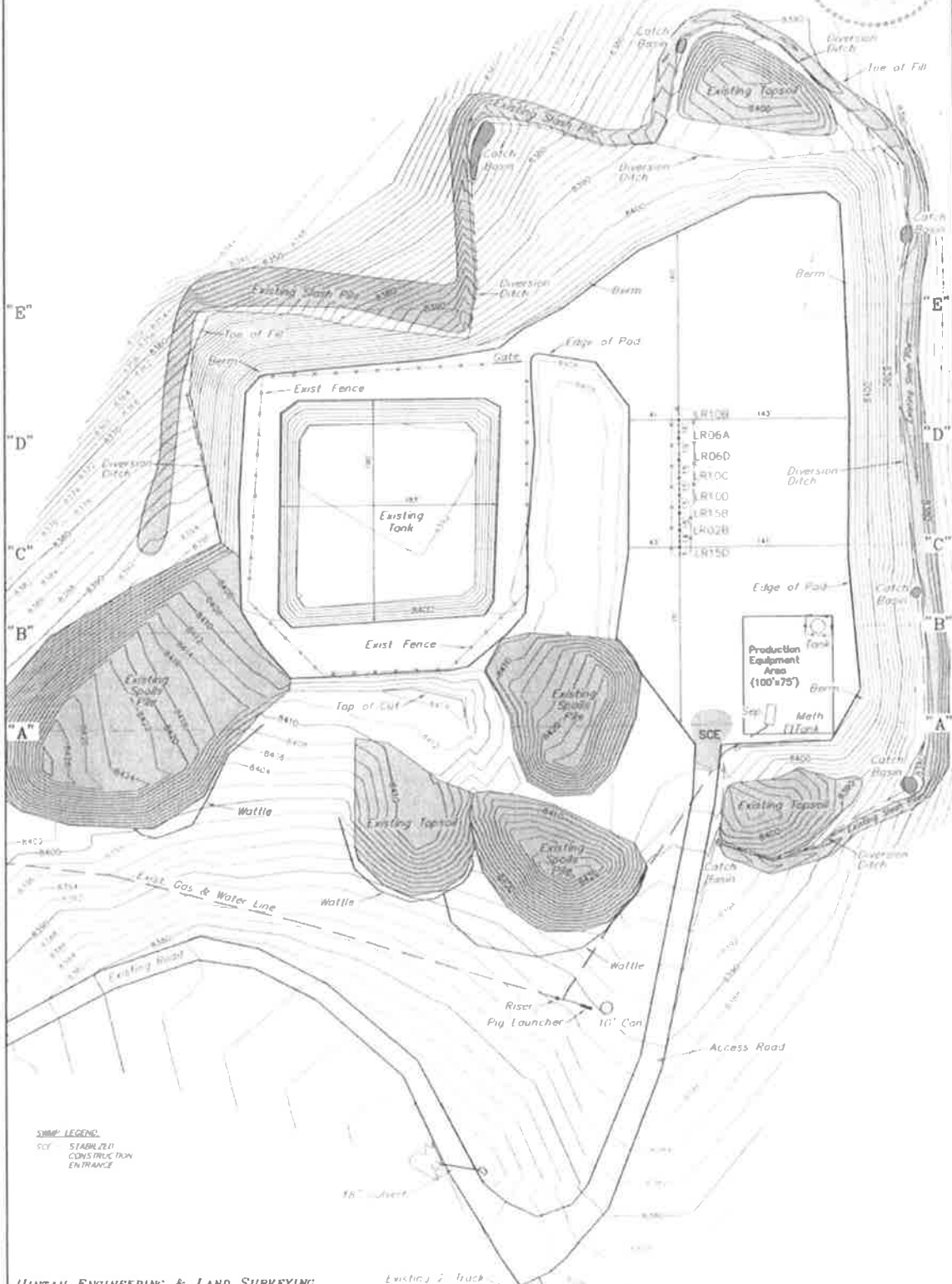
DATE: 08/03/2012

SHEET: 1 OF 1

BERRY PETROLEUM COMPANY
CONSTRUCTION LAYOUT FOR
WELL PAD J15 595 (AS-BUILT)
SECTION 15, T5S, R9SW, 6th P.M.
NW 1/4 SE 1/4

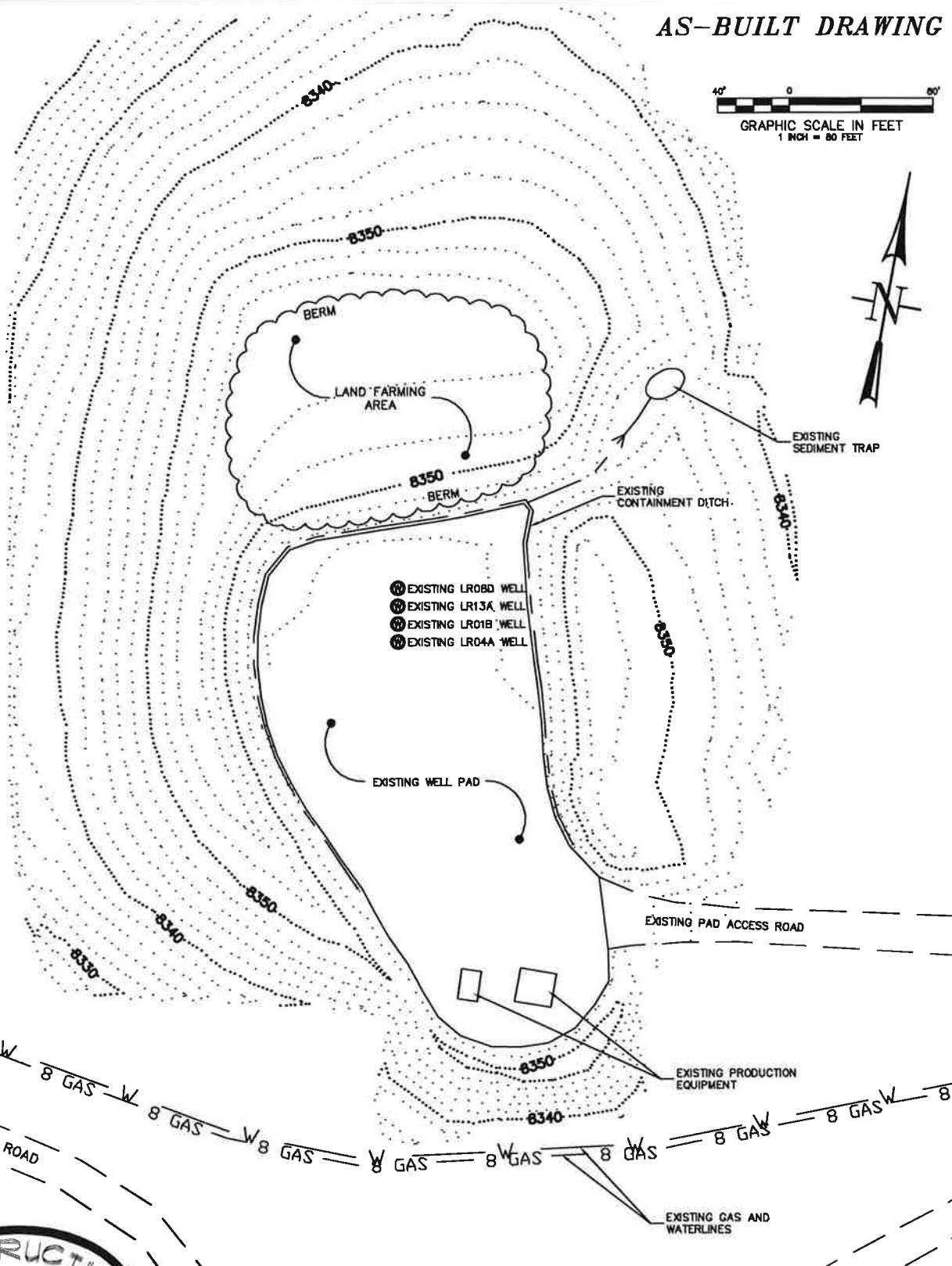
Sheet 2 of 13

SCALE 1" = 80'
 DATE 07-05-10
 DRAWN BY D.R.B.



AS-BUILT DRAWING

40' 0 80'
GRAPHIC SCALE IN FEET
1 INCH = 80 FEET



CONSTRUCTION SURVEYS, INC.
0012 SUNRISE BLVD.
SILT, CO 81652
(970)876-5753

Long Ridge M15-595
W 1/2 SW 1/4 SECTION 15, T. 5 S., R. 95 W.
BERRY PETROLEUM COMPANY

DATE: 07/03/2012

SHEET: 1 OF 1

BERRY PETROLEUM COMPANY

CONSTRUCTION LAYOUT FOR

WELL PAD A21 696

SECTION 21, T6S, R96W, 6th P.M.

NE 1/4 NE 1/4

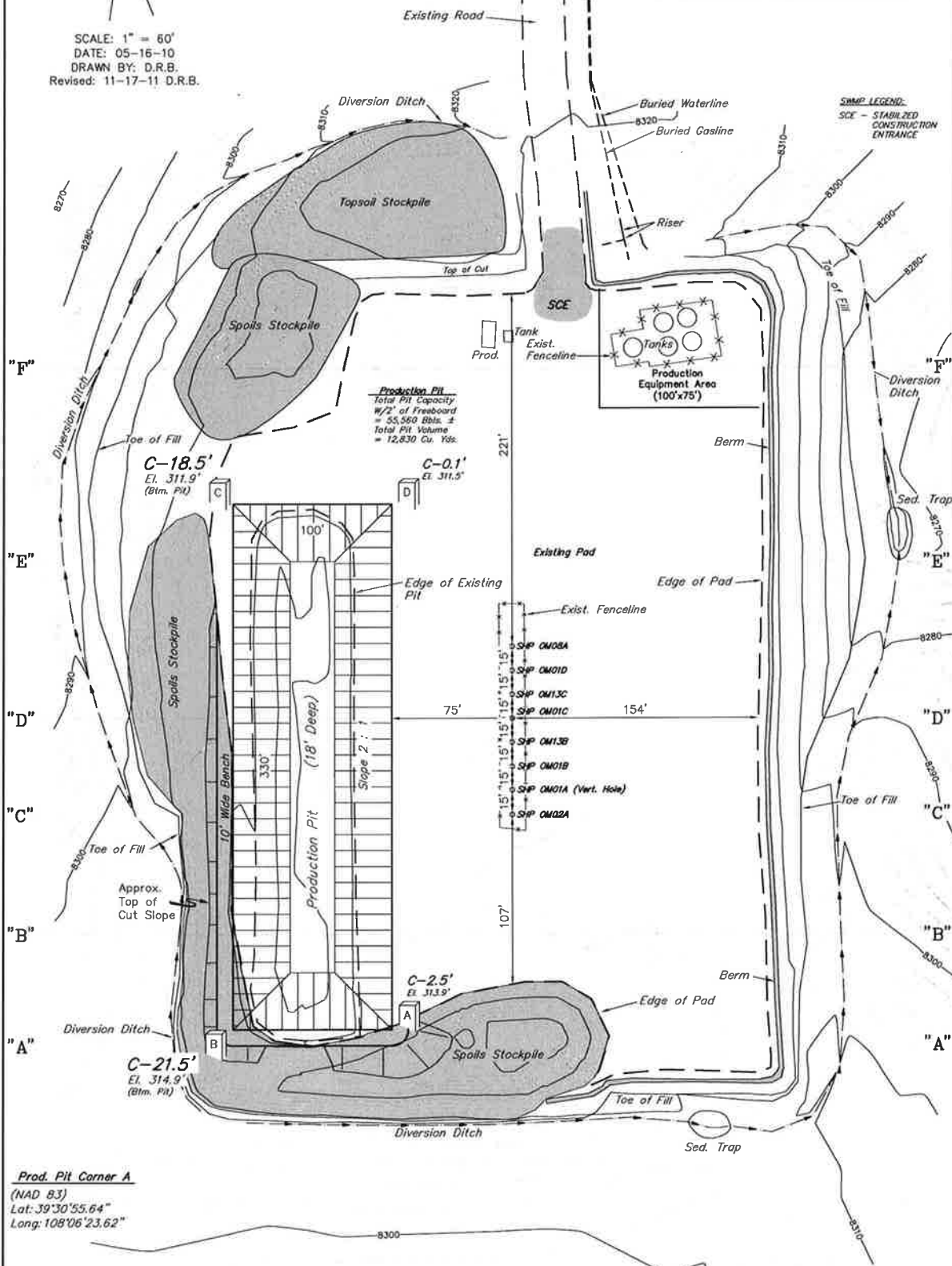
60' 30' 0' 60'

SCALE

Sheet 2 of 12

PRELIMINARY

SCALE: 1" = 60'
DATE: 05-16-10
DRAWN BY: D.R.B.
Revised: 11-17-11 D.R.B.



Prod. Pit Corner A
(NAD 83)
Lat: 39°30'55.64"
Long: 108°06'23.62"

APPROXIMATE ACREAGES

WELL SITE DISTURBANCE = ± 6.265 ACRES
ACCESS ROAD DISTURBANCE = ± 2.766 ACRES
TOTAL = ± 9.031 ACRES

FINISHED GRADE ELEV. AT PIT CORNER A = 8311.4'

UINTAH ENGINEERING & LAND SURVEYING
86 So. 800 East • Vernal, Utah 84078 • (435) 783-1017

Recommend surface roughening (ie. Tracking, Cross Ripping, Pocking), and seed/mulch on all re-contoured/disturbed slopes.

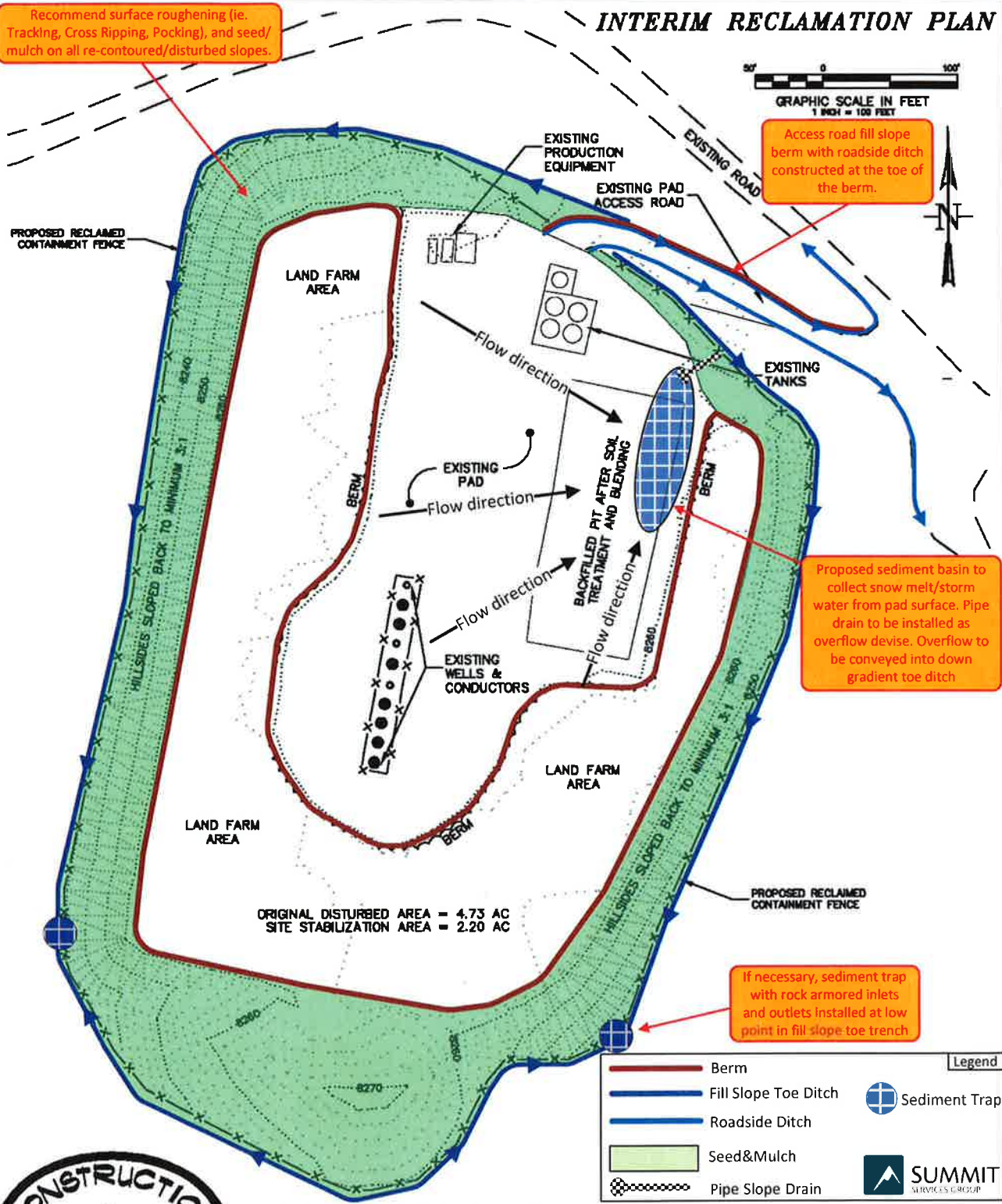
INTERIM RECLAMATION PLAN



Access road fill slope berm with roadside ditch constructed at the toe of the berm.

Proposed sediment basin to collect snow melt/storm water from pad surface. Pipe drain to be installed as overflow device. Overflow to be conveyed into down gradient toe ditch

If necessary, sediment trap with rock armored inlets and outlets installed at low point in fill slope toe trench



ORIGINAL DISTURBED AREA = 4.73 AC
SITE STABILIZATION AREA = 2.20 AC

Legend	
	Berm
	Fill Slope Toe Ditch
	Roadside Ditch
	Seed&Mulch
	Pipe Slope Drain
	Sediment Trap
	SUMMIT SERVICES GROUP



CONSTRUCTION SURVEYS, INC. Old Mountain B10-636
0012 SUNRISE BLVD.
SILT, CO 81652
(970)876-5753

N 1/2 NE 1/4 SECTION 10, T. 6 S, R. 36 W.
BERRY PETROLEUM COMPANY

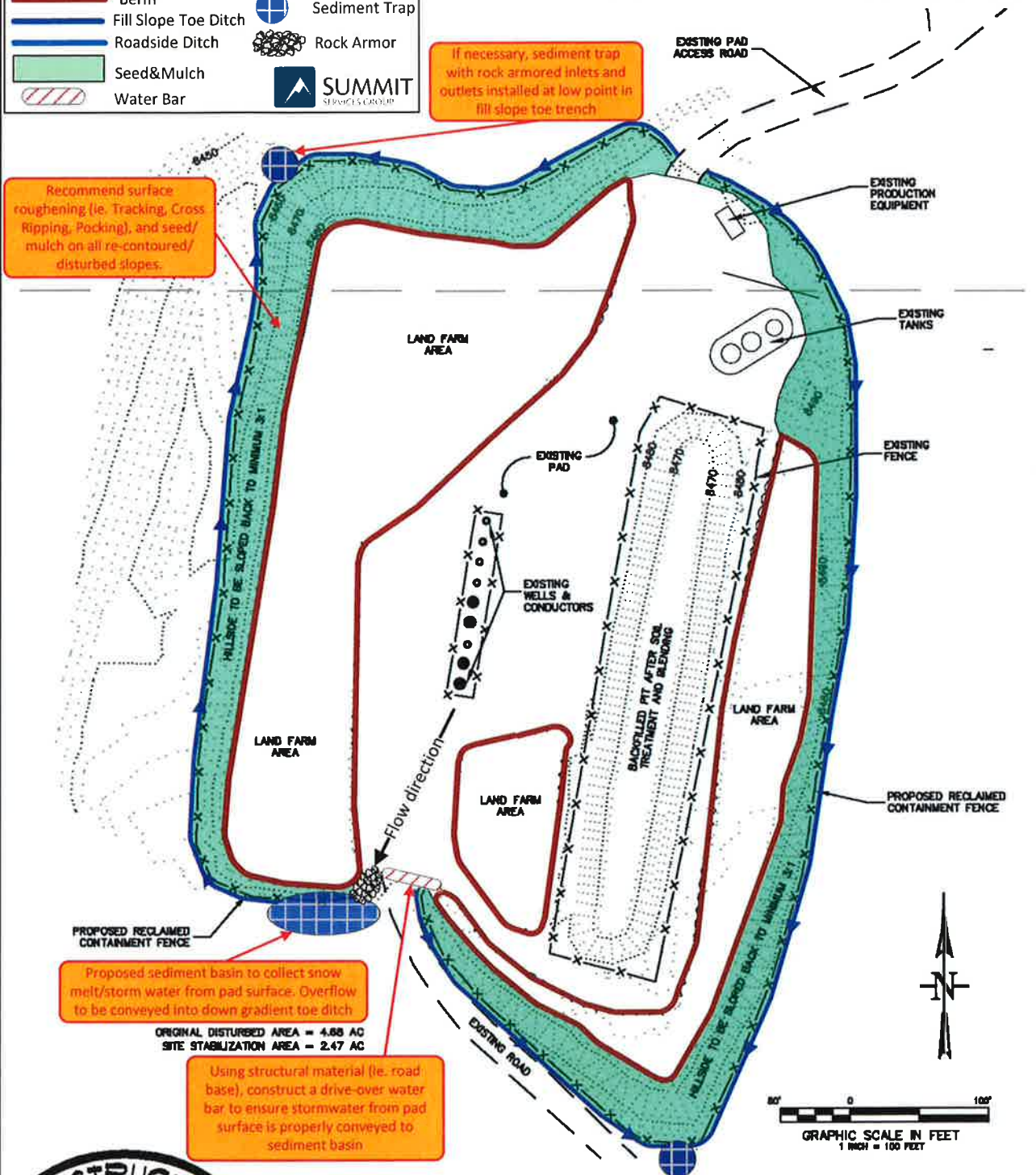
DATE: 03/06/13 SHEET: 1 OF 1

INTERIM RECLAMATION PLAN



If necessary, sediment trap with rock armored inlets and outlets installed at low point in fill slope toe trench

Recommend surface roughening (ie. Tracking, Cross Ripping, Pocking), and seed/mulch on all re-contoured/disturbed slopes.



CONSTRUCTION SURVEYS, INC.
0012 SUNRISE BLVD.
SILT, CO 81652
(970) 876-5753

Old Mountain K15-696
W 1/2 SECTION 15, T. 6 S., R. 86 W.
BERRY PETROLEUM COMPANY

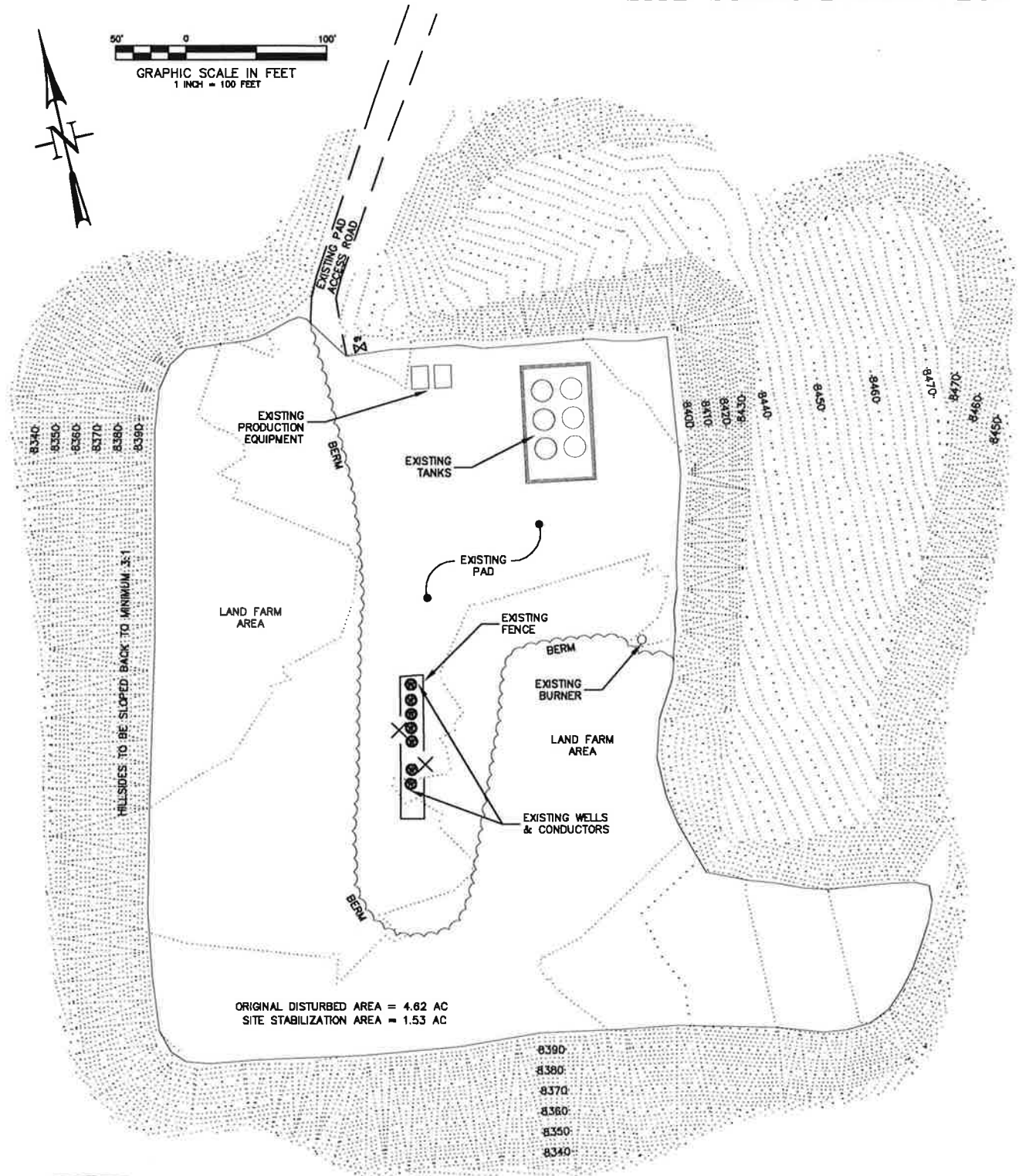
DATE: 03/06/13

SHEET: 1 OF 1

SITE STABILIZATION PLAN



50' 0 100'
GRAPHIC SCALE IN FEET
1 INCH = 100 FEET



CONSTRUCTION SURVEYS, INC. Old Mountain L15-696
0012 SUNRISE BLVD. N 1/2 SW 1/4 SECTION 15, T. 6 S., R. 96 W.
SILT, CO 81652 BERRY PETROLEUM COMPANY
(970)876-5753

DATE: 01/17/13

SHEET: 1 OF 1