



EMPIRICA
The Surface Logging Company

Scale: 5" / 100'
Measured Depth Log

Well Name Pavistma SW #2

Location 1651' FSL, 190' FWL NWSW Sec. 32 T6N R67W

State Colorado

Country USA

API Number 05-123-36652-0000

Region DJ Basin

Spud Date 9-07-13(Curve) / 9-23-13(Lateral)

Surface Coordinates Lat: 40.440500

Long: -104.924820

Drilling Completed 9-10-13(Curve) / 9-22-13 (Lateral)

Field Wattenburg

Rig Number Frontier #10

Bottom Hole Coordinates Projected

Lat:40.44056

Long: -104.90845

Ground Elevation 4,954'

K.B. Elevation 4,976.5'

Logged Interval 5,000'

To 12,007'

Total Depth 12,007'

Formation Codell

Type of Drilling Fluid Fresh Water

Company Tektom Windsor

Address 640 Plaza Drive
Highlands Ranch

Name Dominic Pitre / D

Company Empirica

Address 6741 Satsuma D
Houston, TX 770
(713)-466-7400

ML-056

2 Man Logg
Start Date:
Release Da

Operator

LLC

#290

, CO 80129

Geologist

an Scott

41

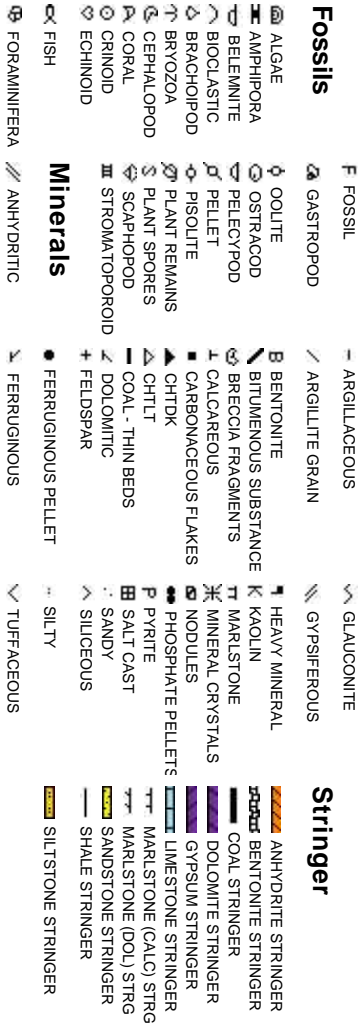
Other

ing Service
8-26-13
te: 9-25-13

Rock Types



Accessories



Oil

DE
EV
OL
ST
FE
FR
IN
IN

Other Symbols

Show

- MOLDIC
- ORGANIC
- PINPOINT
- VUGGY

QUESTIONABLE

Engineering

- FAULT
- FORMATION TOP
- GAS SHOW
- MINDEPTH MN DEPTH
- NORMAL FAULT
- OIL SHOW
- OVERTURNED STRATA
- REVERSE FAULT
- SIDEWALL CORE (LEFT)
- SIDEWALL CORE (RIGHT)
- CONNECTION (LEFT)
- CONNECTION (RIGHT)
- CONNECTION GAS
- CORE - LOST
- CORE - RECOVERED
- DST INTERVAL
- BIT

osity

QUESTIONABLE

Engineering

- FAULT
- FORMATION TOP
- GAS SHOW
- MINDEPTH MN DEPTH
- NORMAL FAULT
- OIL SHOW
- OVERTURNED STRATA
- REVERSE FAULT
- SIDEWALL CORE (LEFT)
- SIDEWALL CORE (RIGHT)
- CONNECTION (LEFT)
- CONNECTION (RIGHT)
- CONNECTION GAS
- CORE - LOST
- CORE - RECOVERED
- DST INTERVAL
- BIT

- WIRELINE TESTED - LEFT
- WIRELINE TESTED - RT
- FINELYXLN
- GRAINSTONE
- LITHOGRAPHIC
- MICROXLN
- MUDSTONE
- PACKSTONE
- WACKESTONE

Rounding

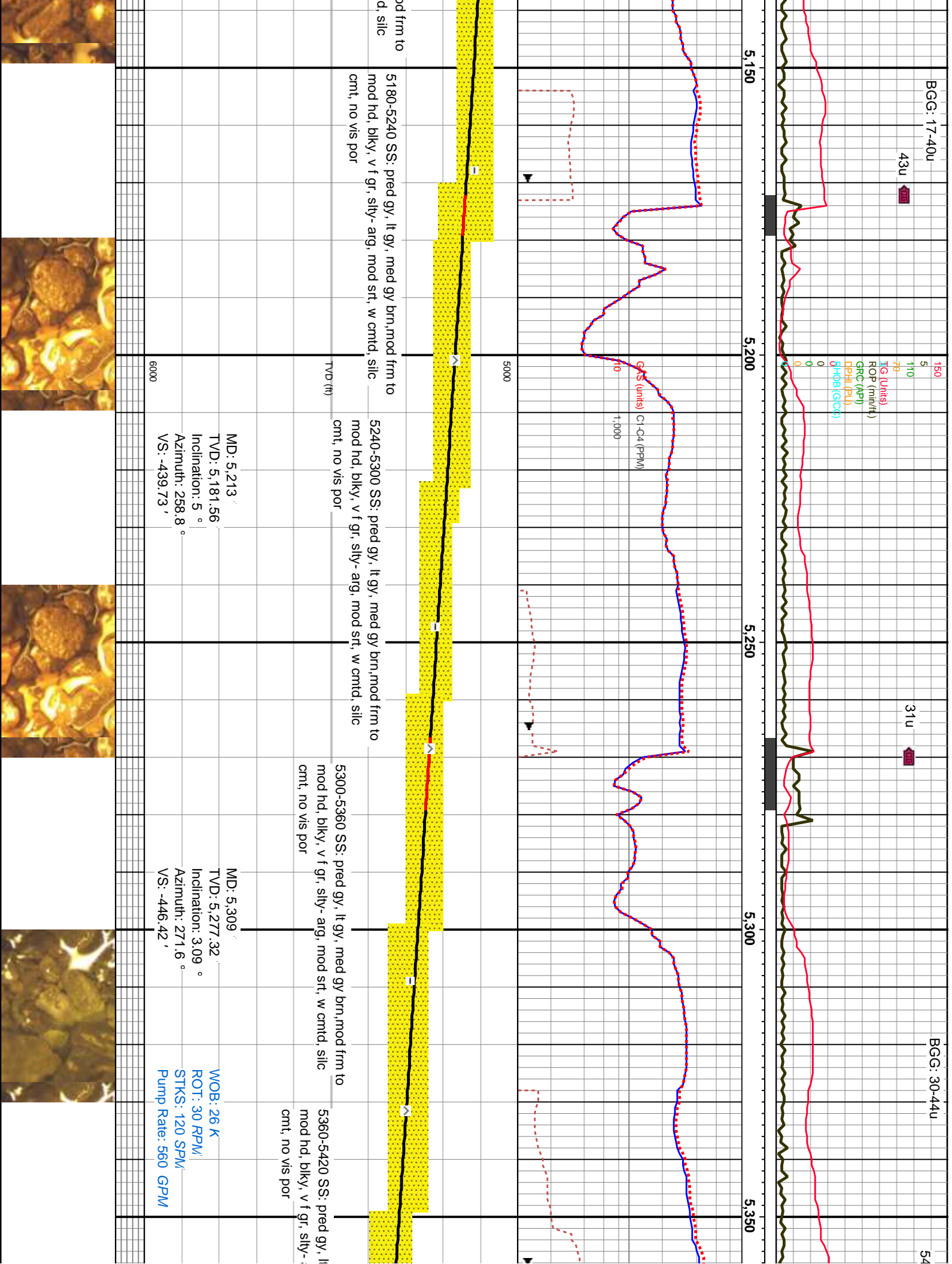
- ANGULAR
- ROUNDED
- SUBANG
- SUBRND

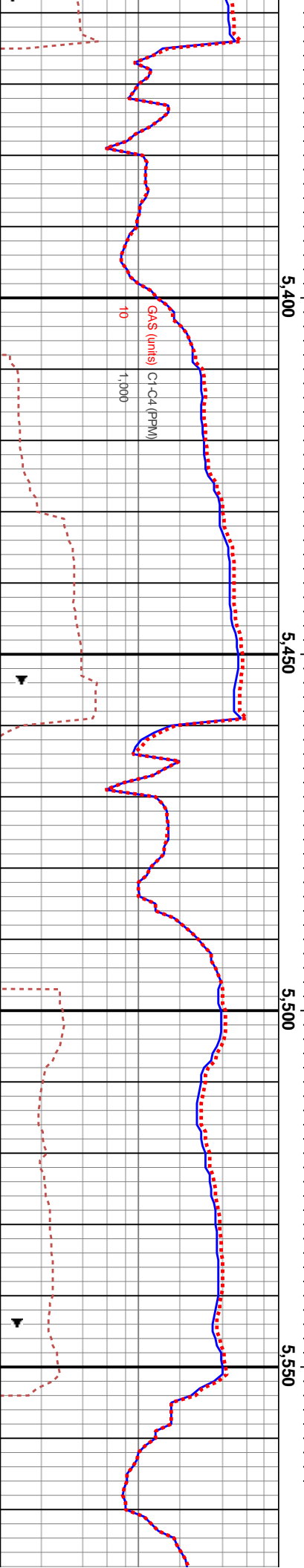
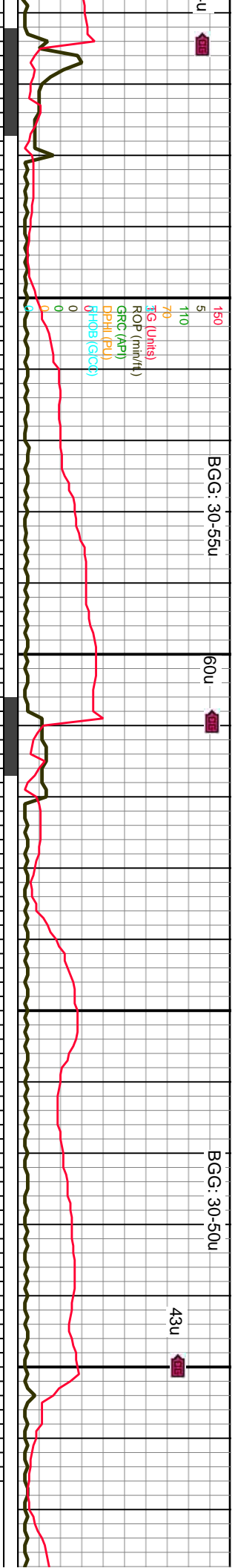
Textures

- BOUNDSTONE
- CHALKY
- CRYPTOXLN
- SLIDE
- SURVEY
- TRIP GAS

Sorting

- MODERATE
- POOR
- WELL

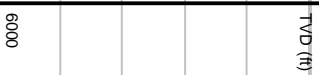




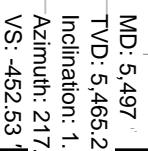
5420-5480 SS: pred gy, lt gy, med gy brn, mod frm to mod hd, blk y, v f gr, silty-arg, mod srt, w cmt'd, silic cmt, no vis por

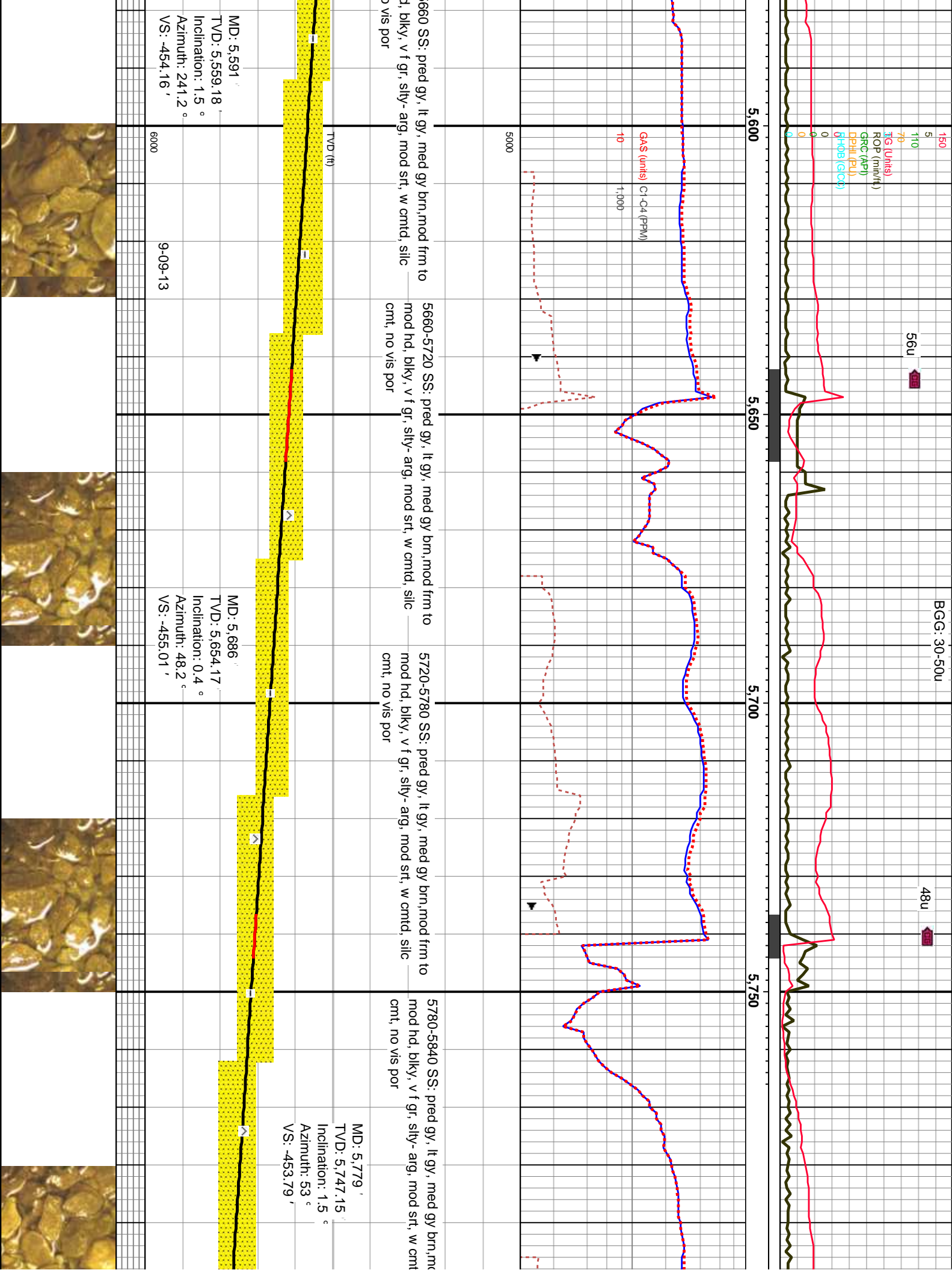
5480-5540 SS: pred gy, lt gy, med gy brn, mod frm to mod hd, blkly, v f gr, silty-arg, mod srt, w cmtd, silic cmnt, no vis por

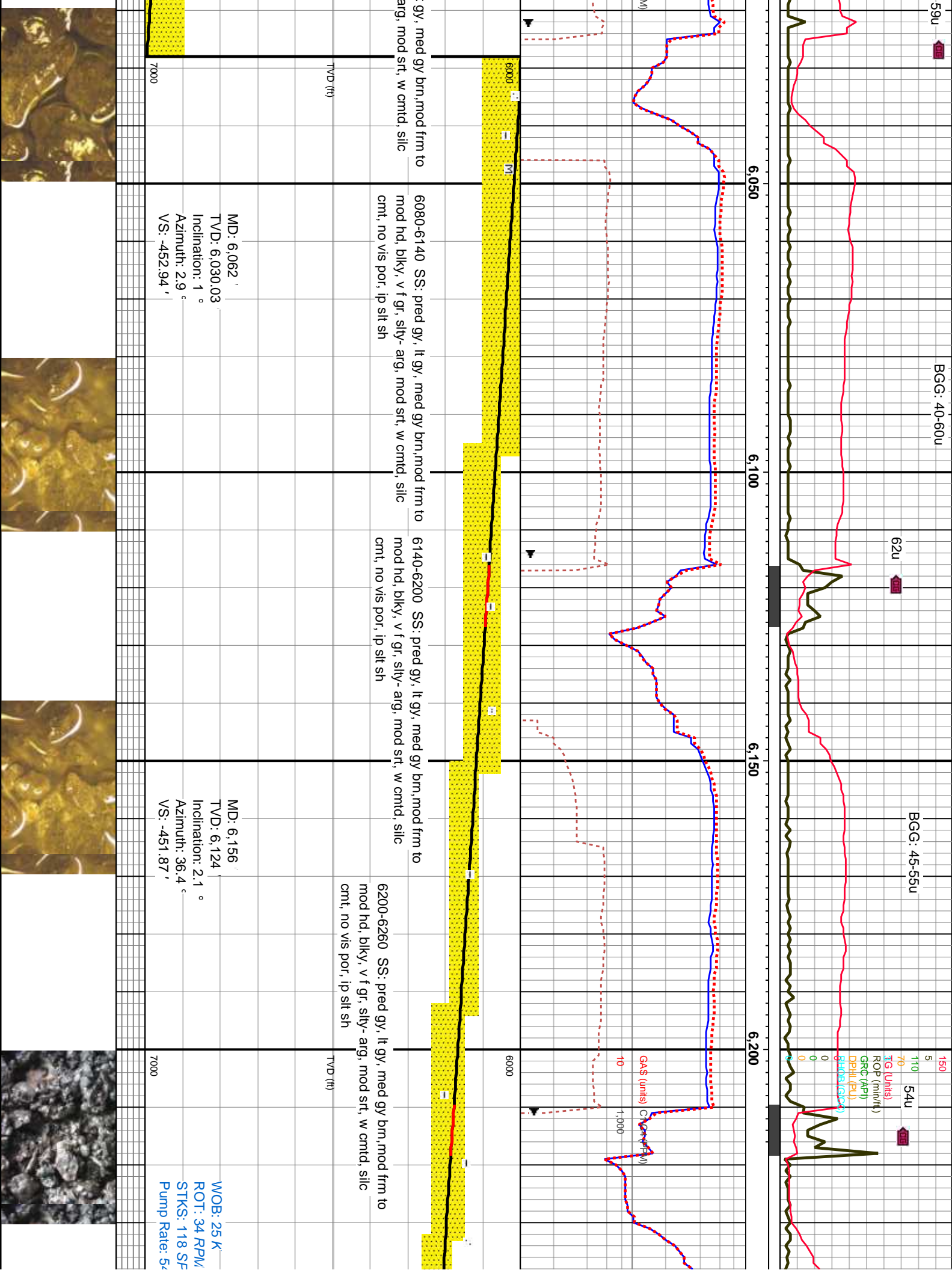
5540-5600 SS: pred gy, lt gy, med gy brn, mod frm to mod hd, blkly, v f gr, silty-arg, mod srt, w cmtd, silic cmf, no vis por

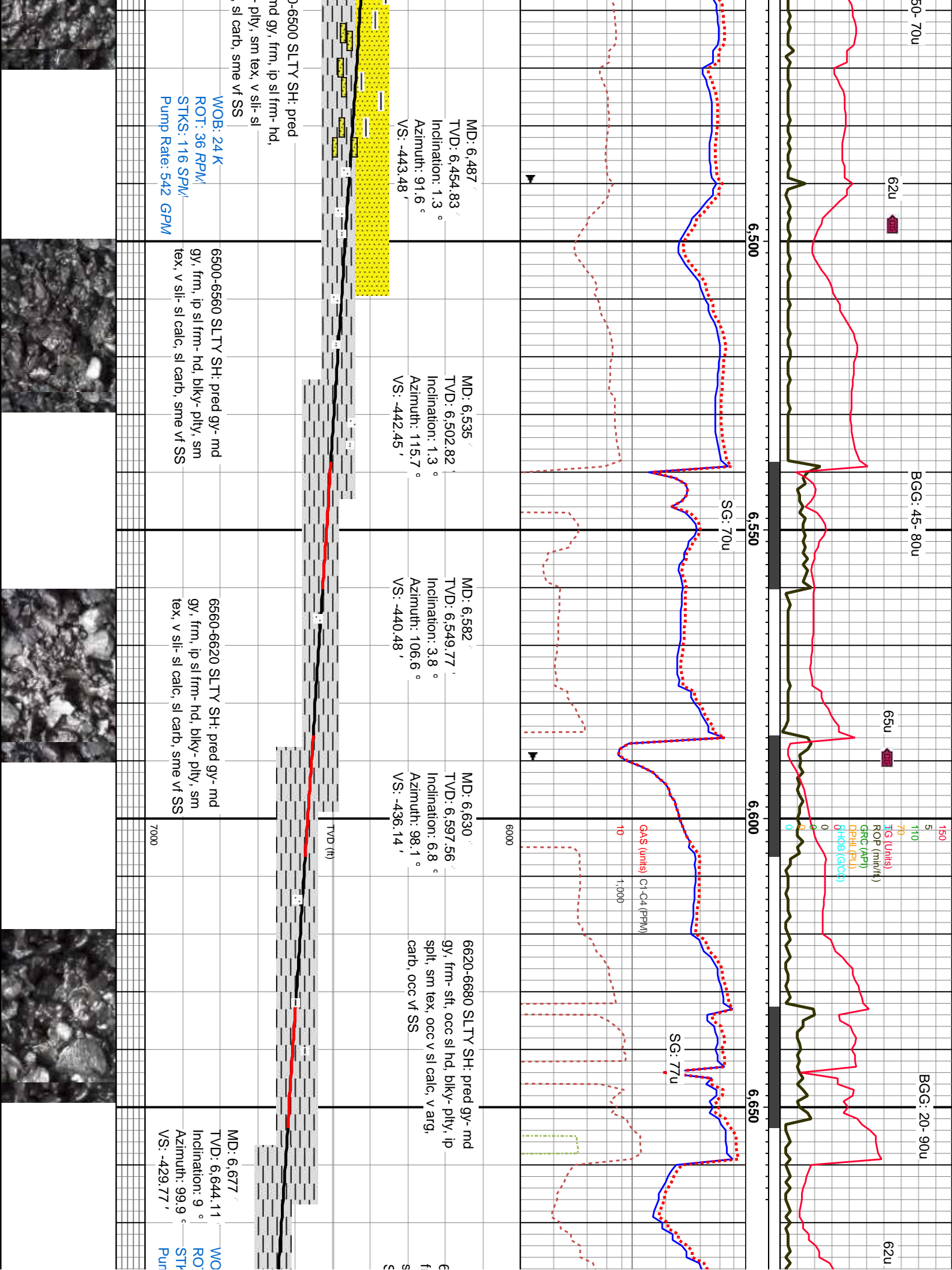
5600-5
mod h
cmt, n

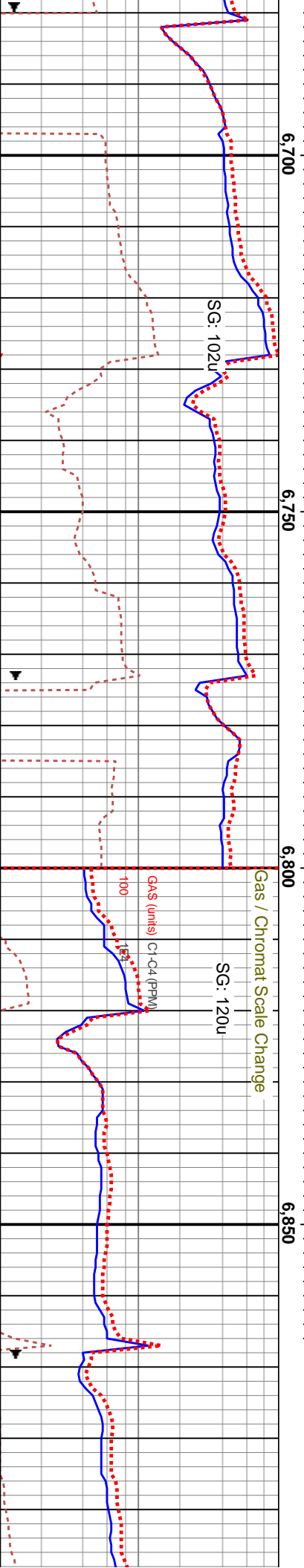
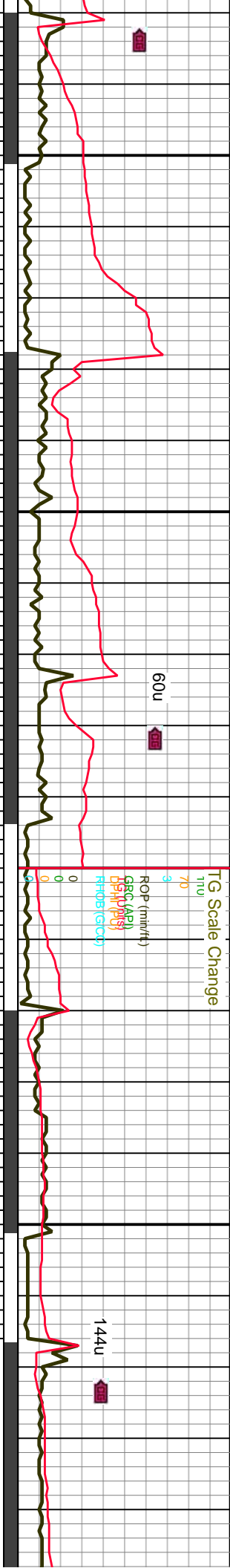
MD: 5,403
TVD: 5,371.23
Inclination: 1.9 °
Azimuth: 283.9 °
VS: -450.46'



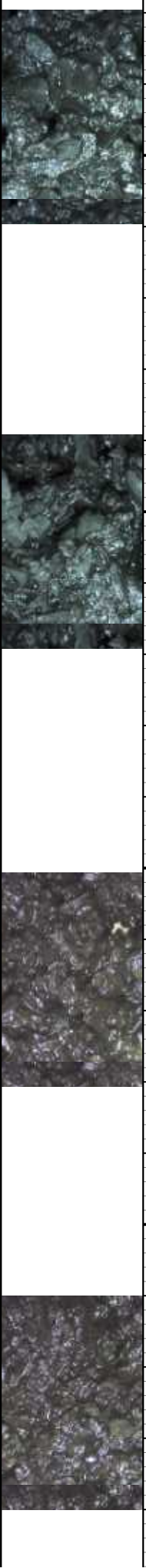


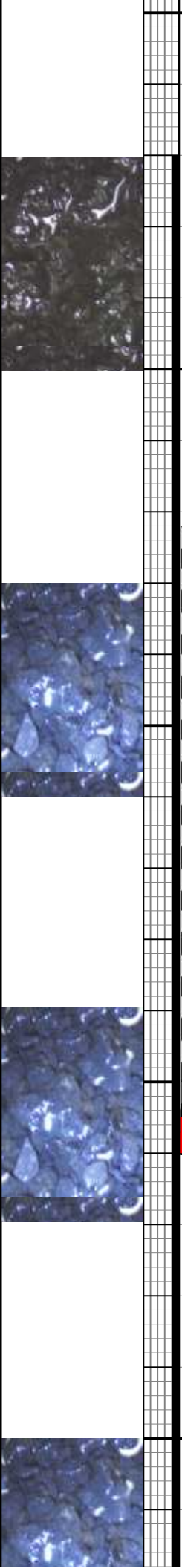
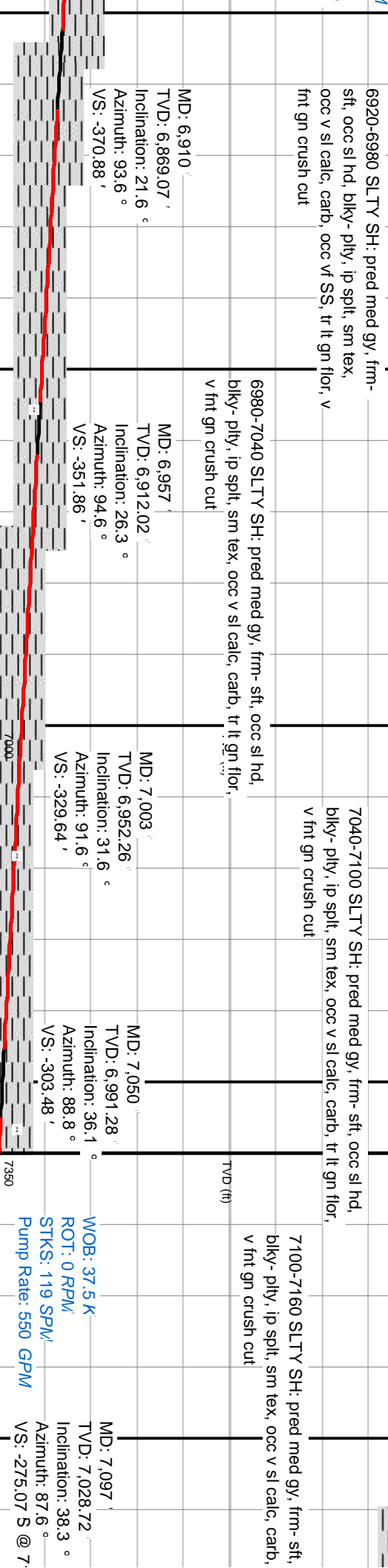
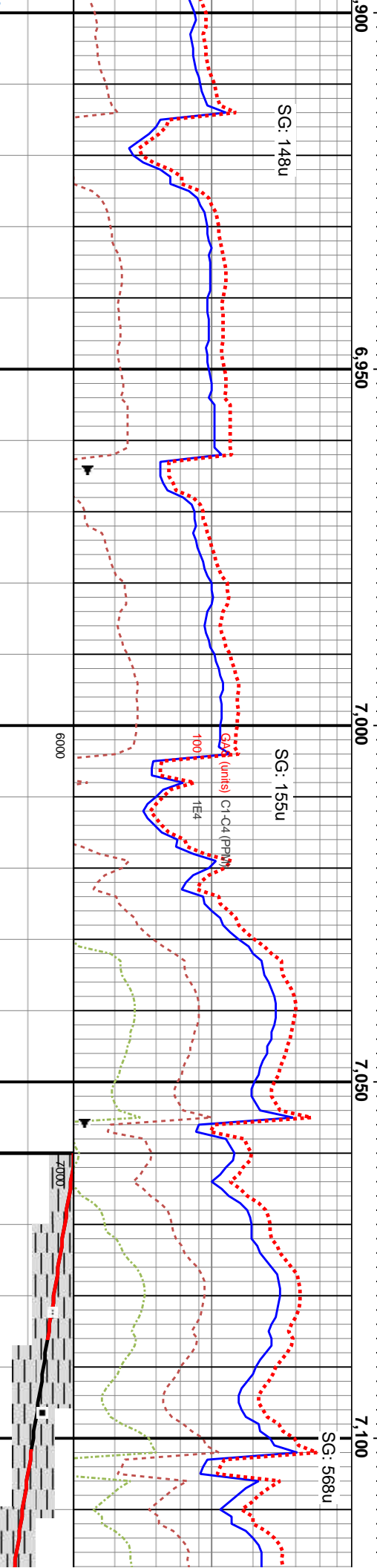
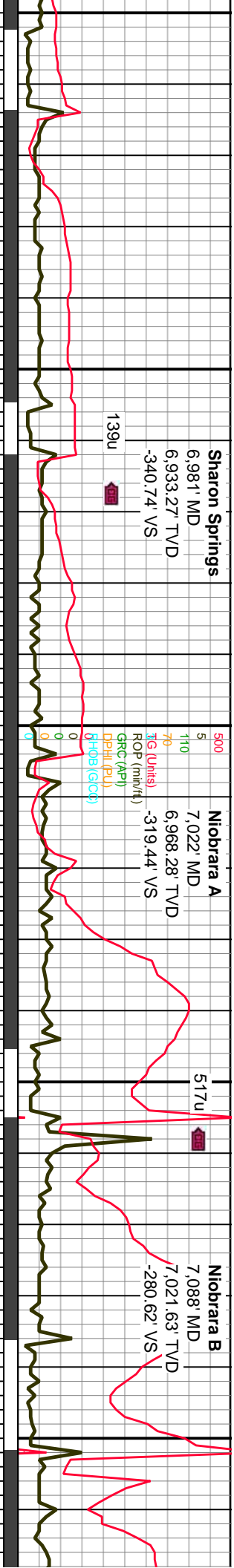


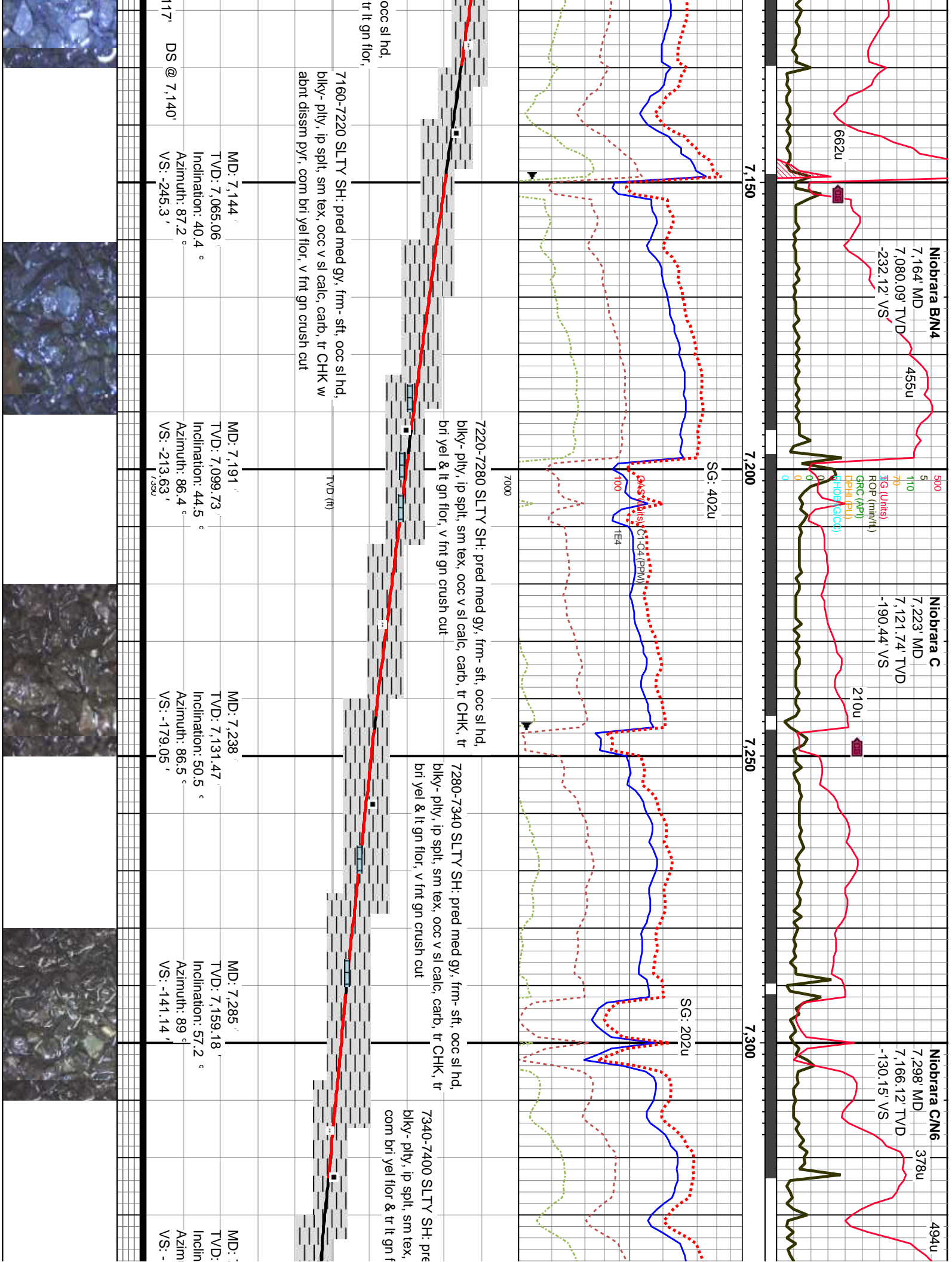


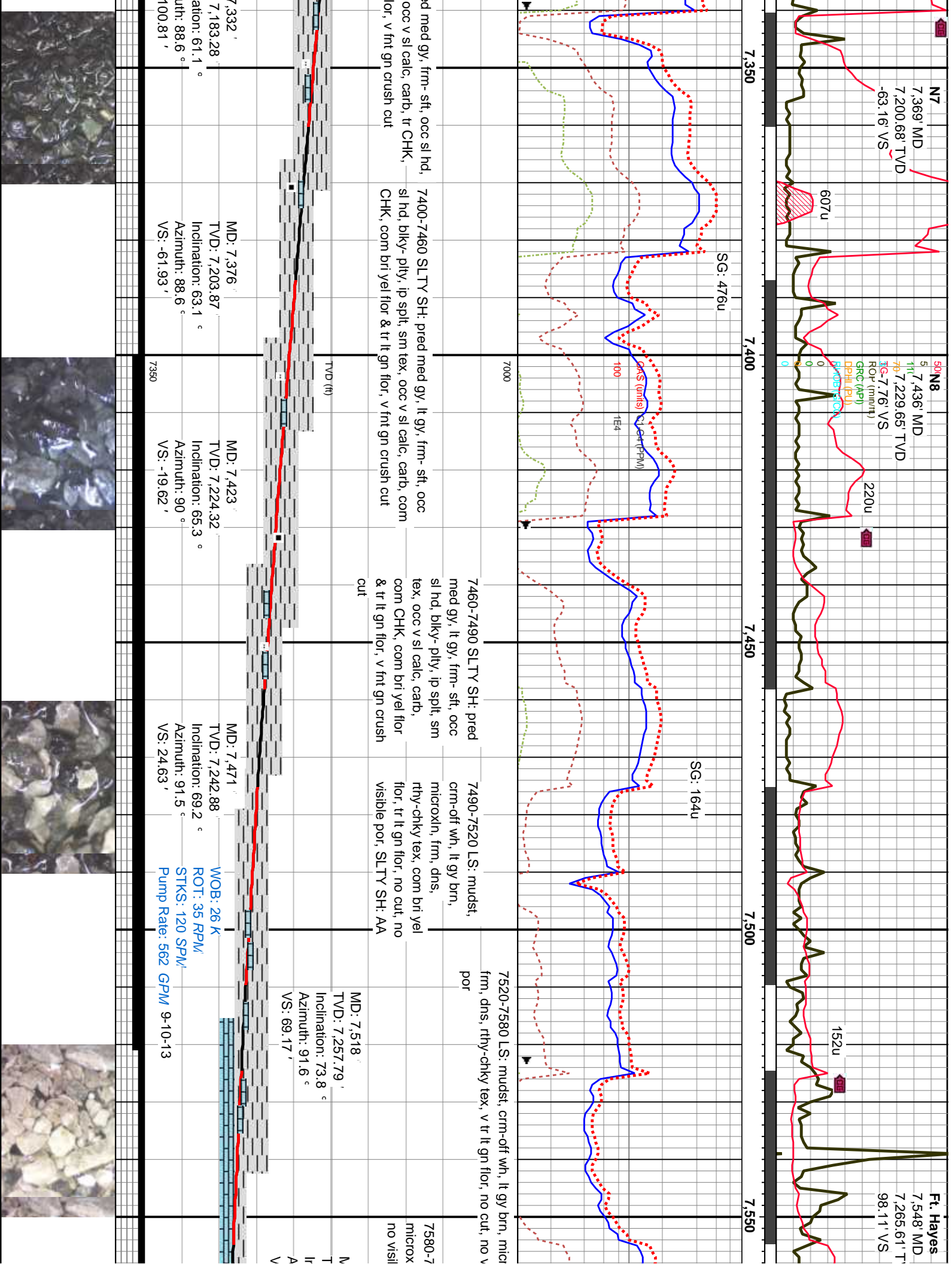


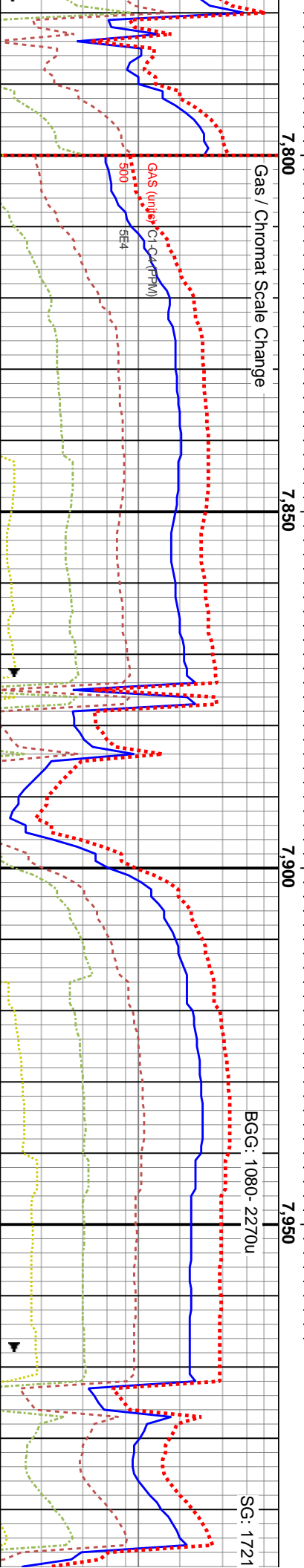
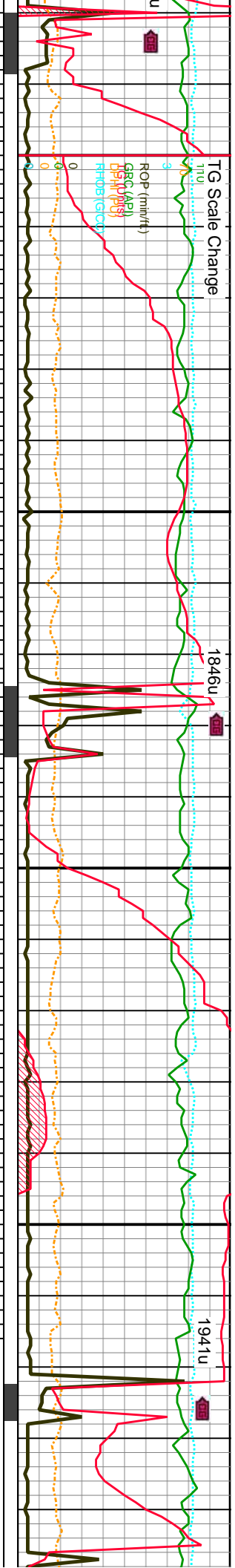
<p>6680-6740 SLTY SH: pred gy- md gy, frm- sft, occ sl hd, blk- ply, ip spl, m tex, occ v sl calc, v arg, carb, occ vf SS</p>	<p>MD: 6,769 TVD: 6,734.27 Inclination: 13.6 ° Azimuth: 94.8 ° VS: -411.78 '</p>	<p>MD: 6,816 TVD: 6,779.77 Inclination: 15.4 ° Azimuth: 91.6 ° VS: -400.03 '</p>	<p>WOB: 18.3 K ROT: 0 RPM STKS: 126 SPM Pump Rate: 585 GPM</p>
	<p>6740-6800 SLTY SH: pred med gy, frm- sft, occ sl hd, blk- ply, ip spl, sm tex, occ v sl calc, v arg, carb, occ vf SS</p>	<p>6800-6860 SLTY SH: pred med gy, frm- sft, occ sl hd, blk- ply, ip spl, sm tex, occ v sl calc, v arg, carb, tr vf SS</p>	<p>6860-6920 SLTY SH: pred med gy, frm- sft, occ sl hd, blk- ply, ip spl, sm tex, occ v sl calc, v arg, carb, occ vf SS, tr lt gn flr</p>
<p>B: 16 K T: 0 RPM SS: 120 SPM Pump Rate: 560 GPM</p>	<p>MD: 6,722 TVD: 6,688.39 Inclination: 11.5 ° Azimuth: 100.1 ° VS: -421.89 '</p>		<p>MD: 6,863 TVD: 6,824.82 Inclination: 17.7 ° Azimuth: 91.5 ° VS: -386.65 '</p>











445 hrs MST
7743'

Resume Drilling Lateral
@ 0330hrs on 9/23/13

0 SS: med gy brn, lt gy-lt gy brn, trnsi qtz
grnd, fri-frm, sb md-rnd, w strd, calc
cmtd, tr intgr por, tr bri yel flor

7850-7910 SS: med gy brn, lt gy-lt gy brn, occ
trnsi ang med qtz gms, pred vf-f grnd, fri-frm, sb
rnd-rnd, occ sb ang, mod strd, clus- unconc,
calc cmtd, ply cmtd, tr cal, tr intgr por, sme min
flor, tr bri yel- lt gn flor, tr sting cut

7910-7970 SS: med gy brn, lt gy-lt gy brn,
occ trnsi ang med qtz gms, pred vf-f grnd,
fri-frm, sb md-rnd, occ sb ang, mod strd,
clus- unconc, calc cmtd, ply cmtd, tr cal, tr
intgr por, sme min flor, tr- p bri yel- lt gn flor,
tr sting cut

7970-8030 SS: med gy brn, lt gy-lt gy brn,
occ trnsi ang med qtz gms, pred vf-f grnd,
fri-frm, sb md-rnd, occ sb ang, mod strd,
clus- unconc, calc cmtd, tr cal, tr intgr por, sme min
flor, tr bri yel- lt gn flor, tr sting cut

TVD (ft)

MD: 7,791'
TVD: 7,286.17'
Inclination: 90.13 °
Azimuth: 88.9 °
VS: 339.31'

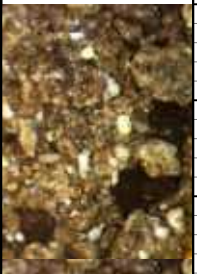
MD: 7,885'
TVD: 7,286.1'
Inclination: 89.96 °
Azimuth: 88.2 °
VS: 433.29'

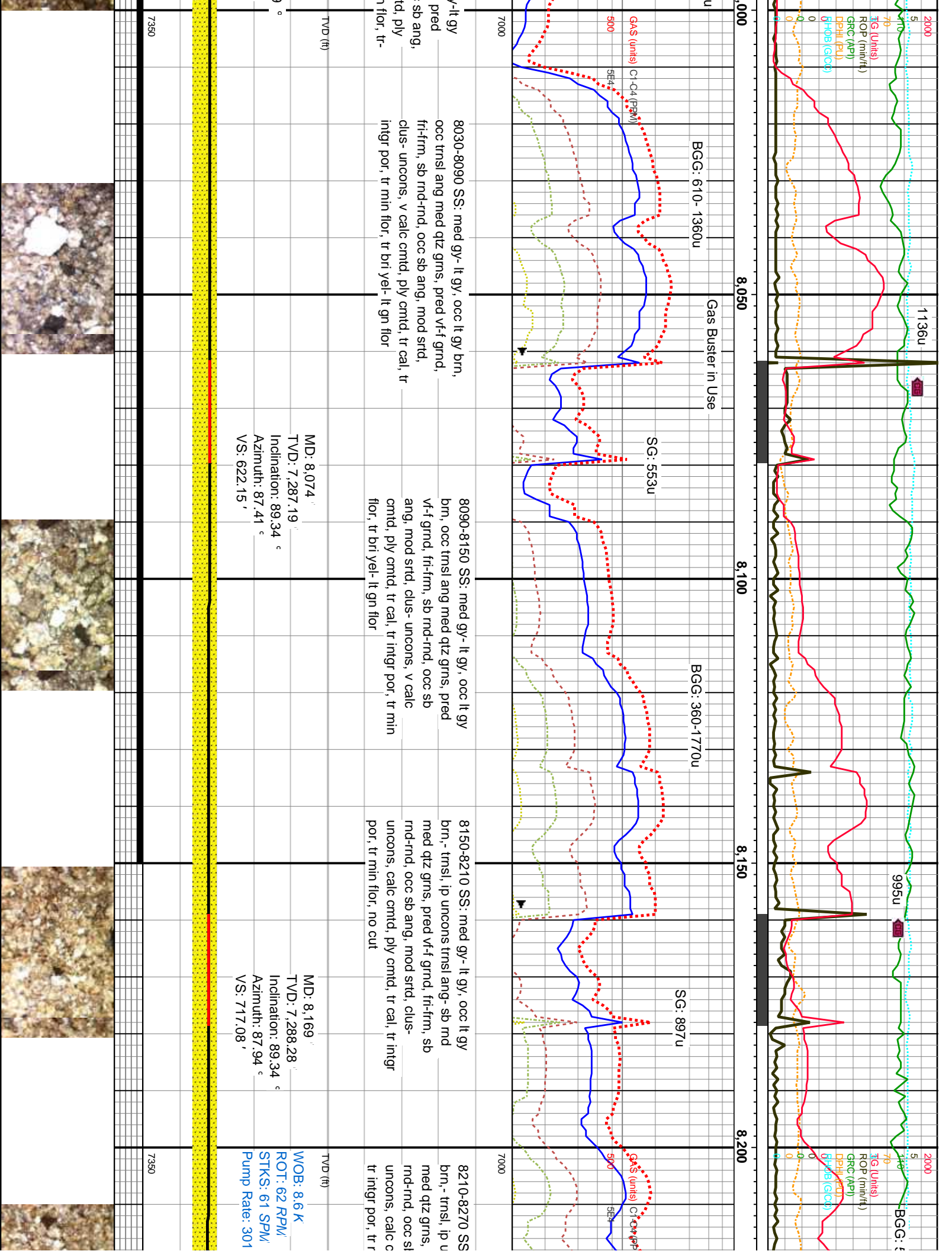
MD: 7,980'
TVD: 7,286.39'
Inclination: 89.66 °
Azimuth: 87.32 °
VS: 528.23'

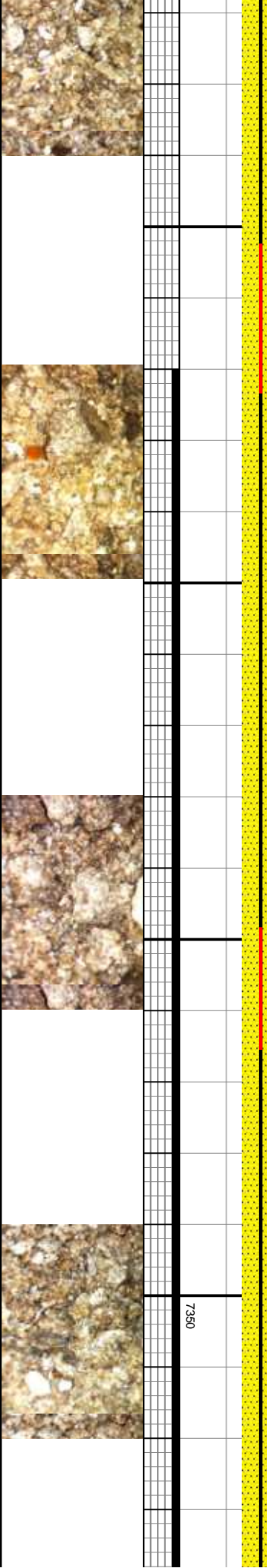
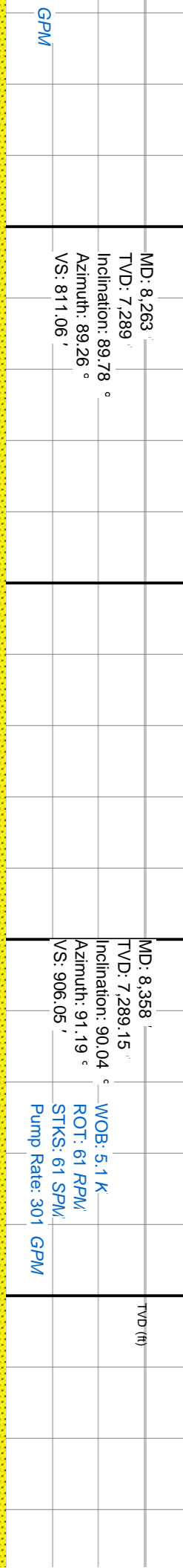
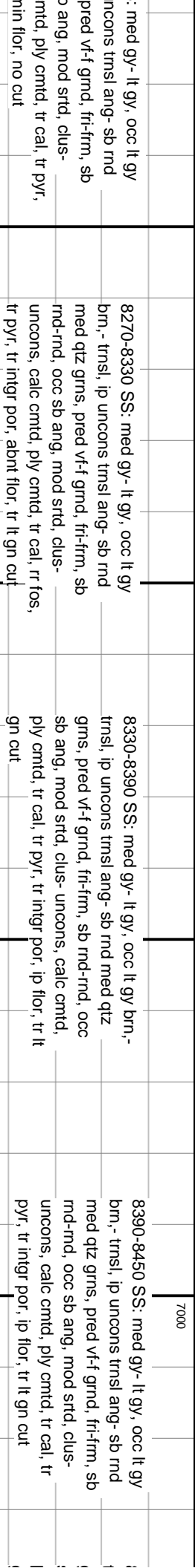
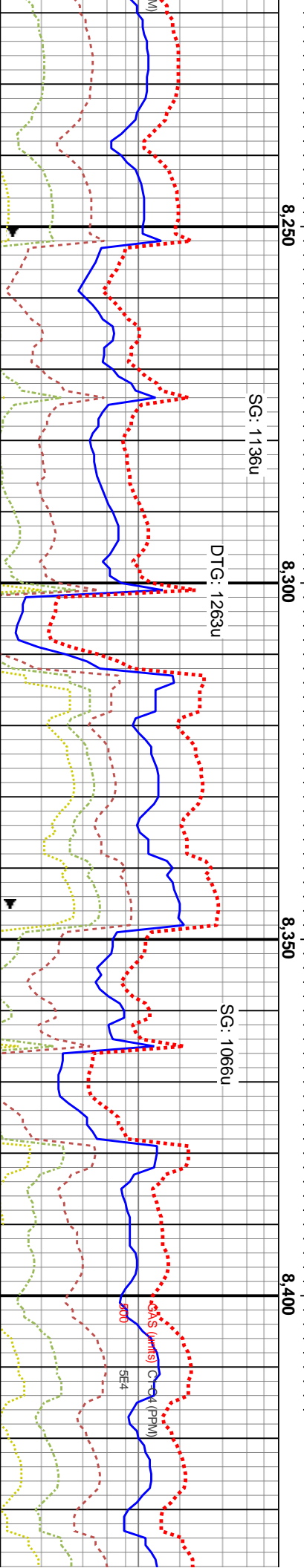
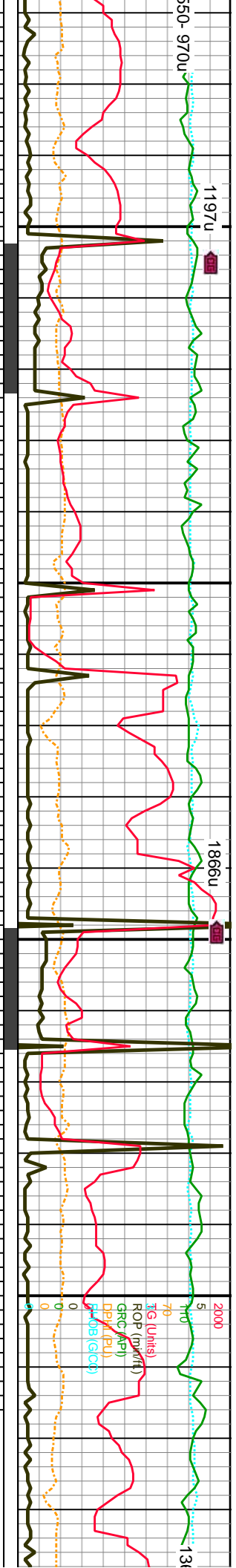
WOB: 10.2 K
ROT: 60 RPM
STKS: 62 SPW
Pump Rate: 305 GPM

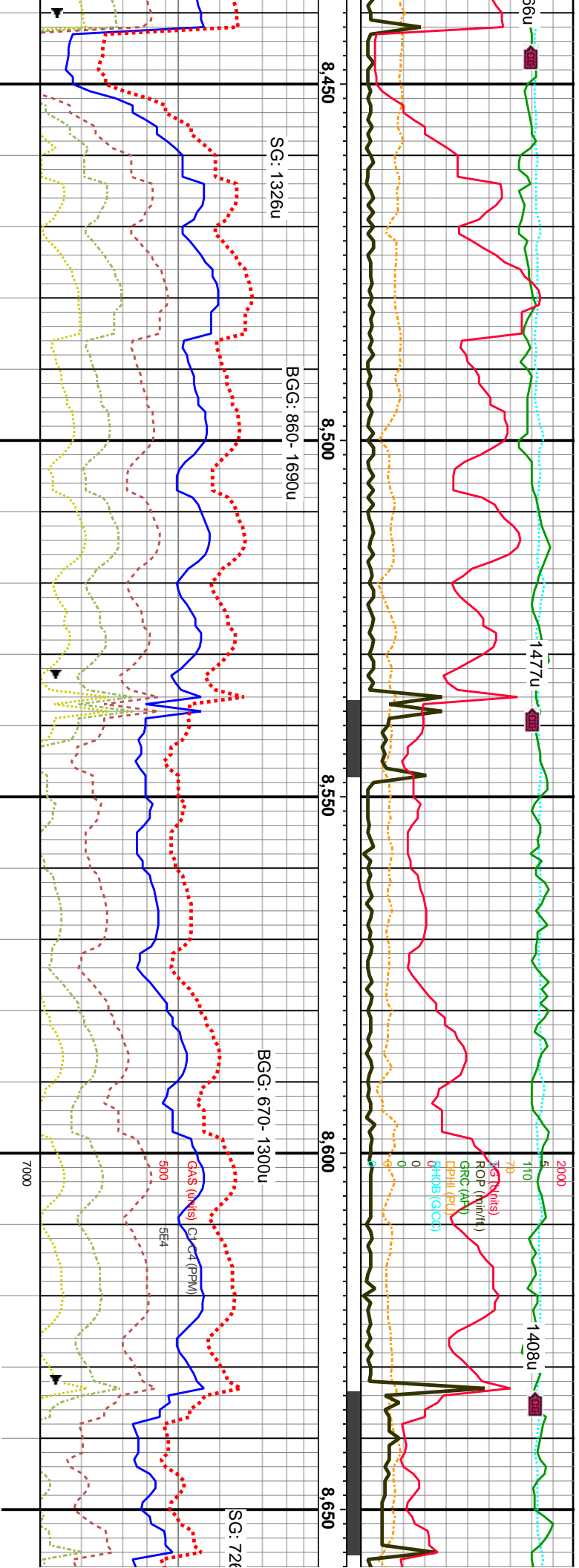
7350

DP @ 7,900'









8,450

8,500

8,550

8,600

8,650

SG: 1326u

BGG: 860- 1690u

BGG: 670- 1300u

SG: 726u

8450-8510 SS: med gy- lt gy, occ lt gy brn, - trns, ip uncon tmsl ang- sb md med qtz grns, pred vf-f grnd, fri-fm, sb md-rnd, occ sb ang, mod strd, clus- uncon, calc cmt, ply cmt, tr cal, tr pyr, tr intgr por, ip flor, tr lt gn cut

8510-8570 SS: med gy- lt gy, occ lt gy brn, - trns, ip uncon tmsl ang- sb md med qtz grns, pred vf-f grnd, fri-fm, sb md-rnd, occ sb ang, mod strd, clus- uncon, calc cmt, ply cmt, tr cal, tr pyr, tr intgr por, ip flor, tr lt gn cut

8570-8630 SS: med gy- lt gy, occ lt gy brn, - trns, ip uncon tmsl ang- sb md med qtz grns, pred vf-f grnd, fri-fm, sb md-rnd, occ sb ang, mod strd, clus- uncon, calc cmt, ply cmt, tr cal, tr pyr, tr intgr por, ip flor, tr lt gn cut

8630-8690 SS: gy- lt gy, occ t uncon tmsl ang- sb md med grns, pred vf-f grnd, fri-fm, sb occ sb ang, mod strd, clus- ur calc cmt, tr cal, tr intgr por, ip gn cut

MD: 8,452

TVD: 7,288.72

Inclination: 90.48 °

Azimuth: 90.84 °

VS: 1,000.02'

MD: 8,546

TVD: 7,288.58

Inclination: 89.69 °

Azimuth: 89.87 °

VS: 1,094.02'

TVD (ft)

MD: 8,641

TVD: 7,289.1

Inclination: 89.69 °

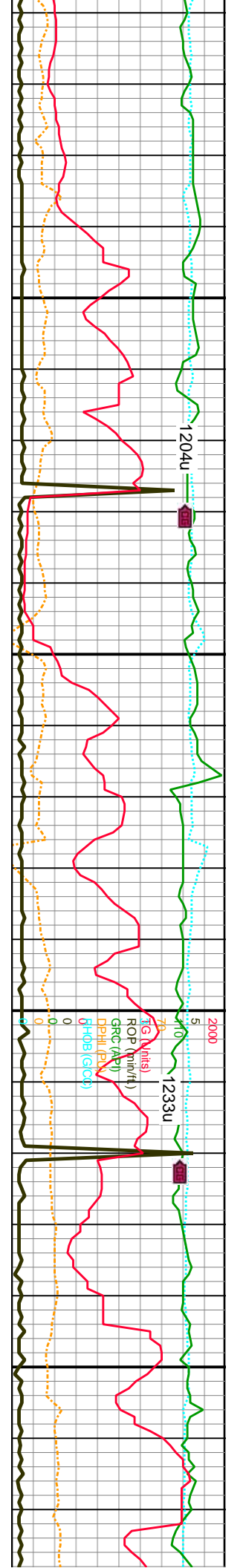
Azimuth: 90.66 °

VS: 1,189.01'

WOB: 12.8 K
ROT: 61 RPM
STKS: 58 SPM
Pump Rate: 283 GPM

7350





8,700

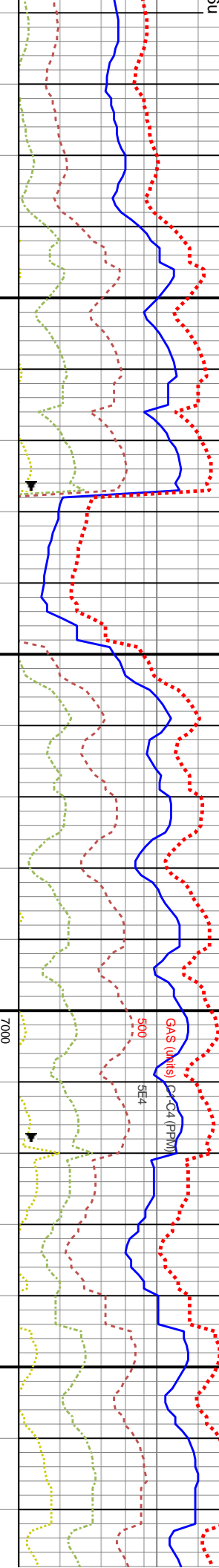
8,750

8,800

8,850

BGG: 580 - 1380u

BGG: 970 - 1670u



7000

8690-8750 SS: gy- lt gy, occ trnsi, ip
uncons trnsi ang- sb rnd med qtz grns,
pred vf-f grnd, fri-firm, sb rnd-rnd, occ sb
ang, mod strd, clus- uncons, calc cmtd,
tr cal, tr intgr por, ip flor, tr lt gn cut

8750-8810 SS: gy- lt gy, occ trnsi, ip
uncons trnsi ang- sb rnd med qtz
grns, pred vf-f grnd, fri-firm, sb rnd-rnd,
occ sb ang, mod strd, clus- uncons,
calc cmtd, tr cal, tr intgr por, ip flor, tr lt
gn cut

8810-8870 SS: gy- lt gy, occ trnsi, ip uncons
trnsi ang- sb rnd med qtz grns, pred vf-f grnd,
fri-firm, sb rnd-rnd, occ sb ang, mod strd,
clus- uncons, calc cmtd, tr cal, tr intgr por, ip
flor, tr lt gn cut

8870-8930
uncons tm
grns, pred
occ sb ang
calc cmtd,
tr lt gn cut

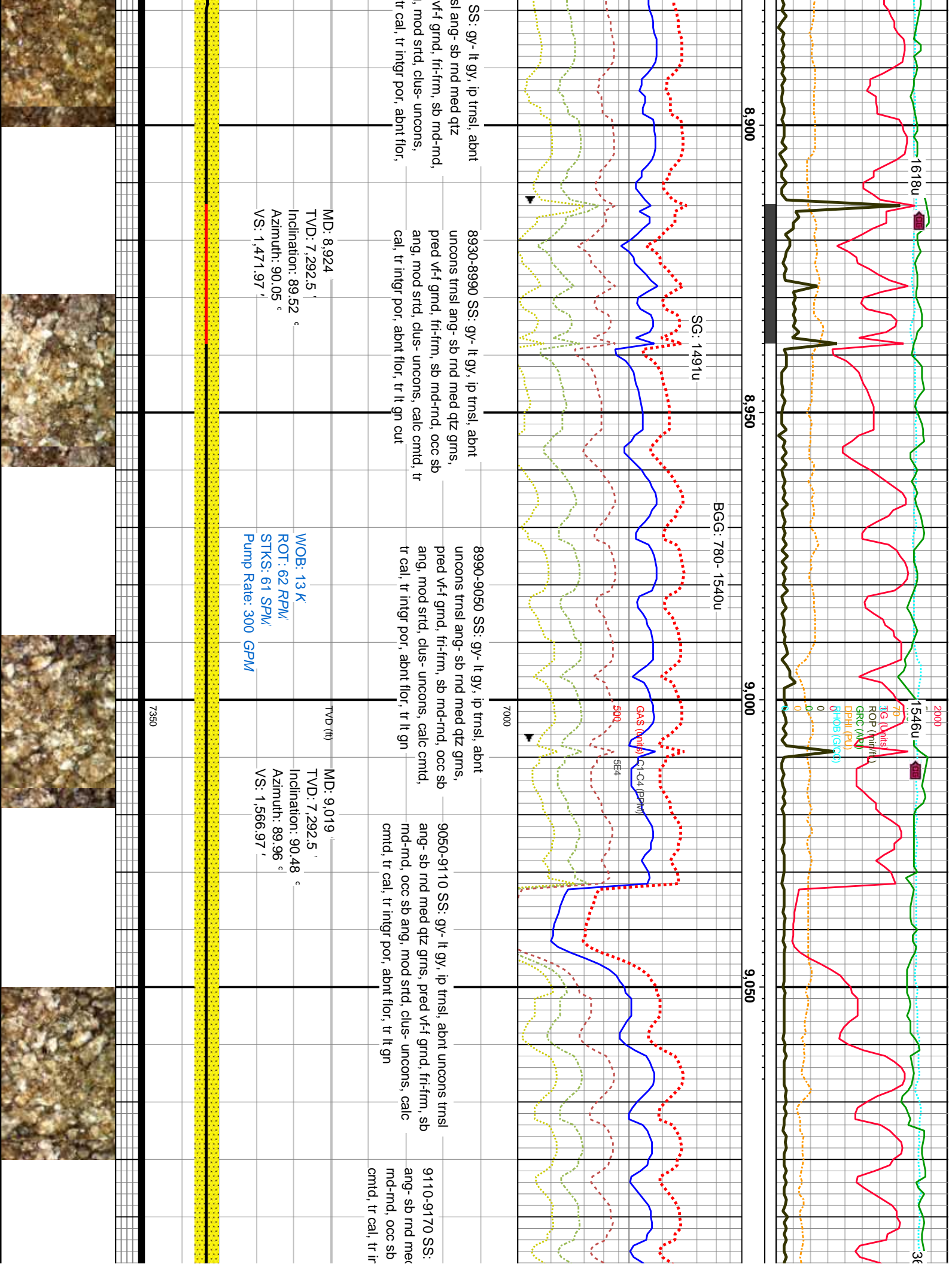
MD: 8,735
TVD: 7,289.75
Inclination: 89.52 °
Azimuth: 90.57 °
VS: 1,283 '

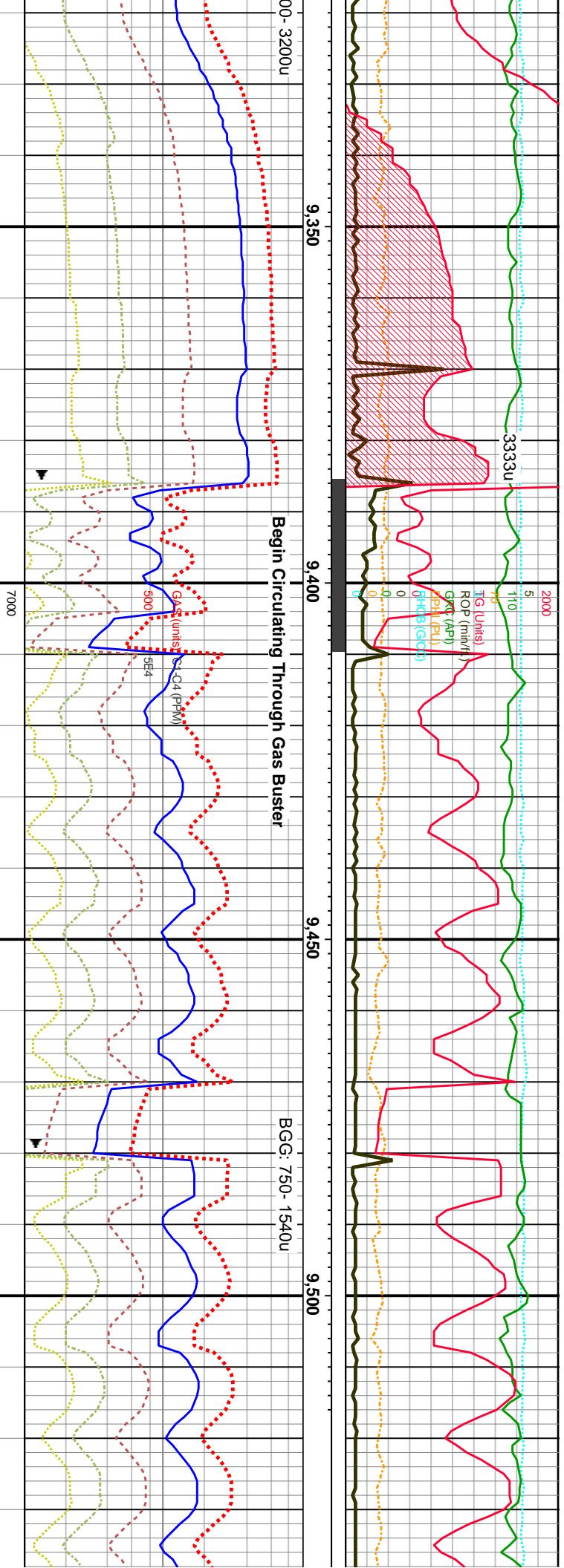
WOB: 13.1 K
ROT: 62 RPM
STKS: 59 SPM
Pump Rate: 291 GPM

MD: 8,830
TVD: 7,291.13
Inclination: 88.81 °
Azimuth: 89.26 °
VS: 1,377.98 '

7350







00- 3200u	9350	9400	9450	9500
pred vf-i gmnd, fri-firm, sb	9380-9440 SS: gy- lt gy, ip tmsl, abnt unconcs tmsl	9440-9500 SS: gy- lt gy, ip tmsl, abnt unconcs tmsl	9500-9560 SS: gy- lt gy, ip tmsl, abnt unconcs tmsl	9560-9600 SS: gy- lt gy, ip tmsl, abnt unconcs tmsl
strd, clus- unconcs, calc	ang- sb rnd med qtz grns, pred vf-i gmnd, fri-firm, sb	ang- sb rnd med qtz grns, pred vf-i gmnd, fri-firm, sb	ang- sb rnd med qtz grns, pred vf-i gmnd, fri-firm, sb	ang- sb rnd med qtz grns, pred vf-i gmnd, fri-firm, sb
cont flor, tr lt gn	rnd-rnd, occ sb ang, mod strd, clus- unconcs, calc	rnd-rnd, occ sb ang, mod strd, clus- unconcs, calc	rnd-rnd, occ sb ang, mod strd, clus- unconcs, calc	rnd-rnd, occ sb ang, mod strd, clus- unconcs, calc
	cmtd, tr cal, tr intgr por, abnt flor, tr lt gn	cmtd, tr cal, tr intgr por, abnt flor, tr lt gn	cmtd, tr cal, tr intgr por, abnt flor, tr lt gn	cmtd, tr cal, tr intgr por, abnt flor, tr lt gn

TVD (ft)

MD: 9,397'

TVD: 7,292.88'

Inclination: 90.22 °

Azimuth: 92.07 °

VS: 1,944.91'

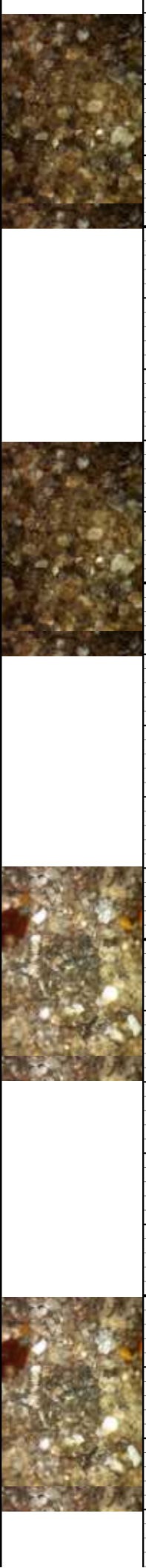
WOB: 15 K

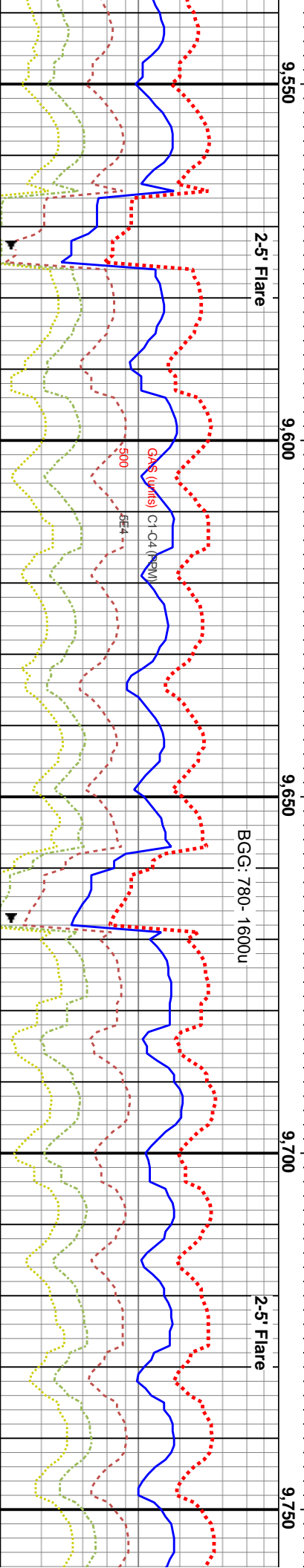
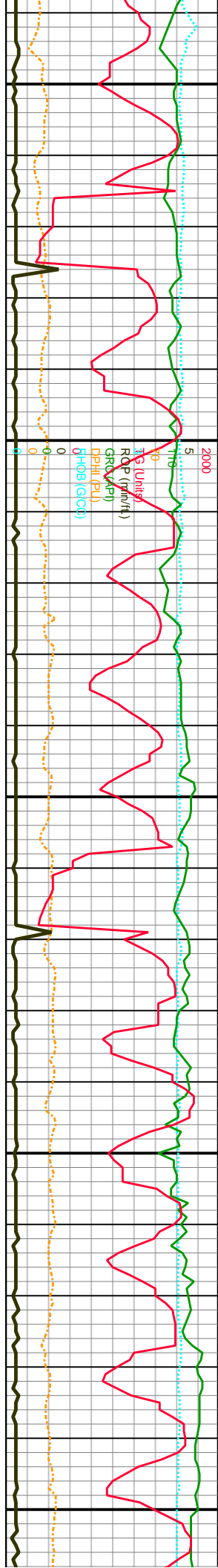
ROT: 63 RPM

STKS: 58 SPM

Pump Rate: 287 GPM

7350





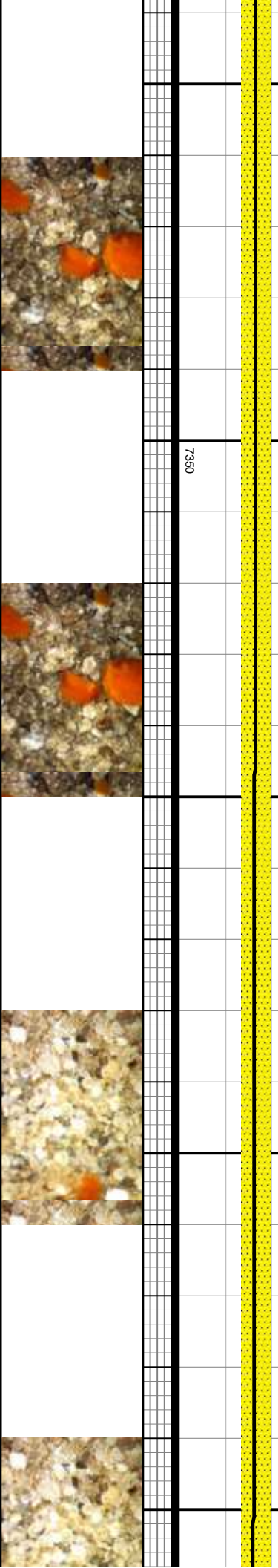
9620-9680 SS: gy- lt gy, ip trnsi, abnt unconcs trnsi
o rnd med qtz grns, pred vf-f grnd, fri-frm, sb
d, occ sb ang, mod strd, clus- unconcs, calc
tr cal, tr intgr por, abnt flor, tr lt gn

9680-9740 SS: gy- lt gy, ip trnsi, abnt unconcs trnsi
ang- sb rnd med qtz grns, pred vf-f grnd, fri-frm, sb
rnd-rnd, occ sb ang, mod strd, clus- unconcs, calc
cmtd, tr cal, tr intgr por, abnt flor, tr lt gn

9740-9800 SS: gy- lt gy, ip trnsi, abnt unconcs trnsi
ang- sb rnd med qtz grns, pred vf-f grnd, fri-frm, sb
rnd-rnd, occ sb ang, mod strd, clus- unconcs, calc
cmtd, tr cal, tr intgr por, abnt flor, tr lt gn

MD: 9,585'
TVD: 7,292.45'
Inclination: 89.87°
Azimuth: 90.57°
VS: 2,132.83'

MD: 9,680'
TVD: 7,293.18'
Inclination: 89.25°
Azimuth: 89.87°
VS: 2,227.82'





9,800

9,850

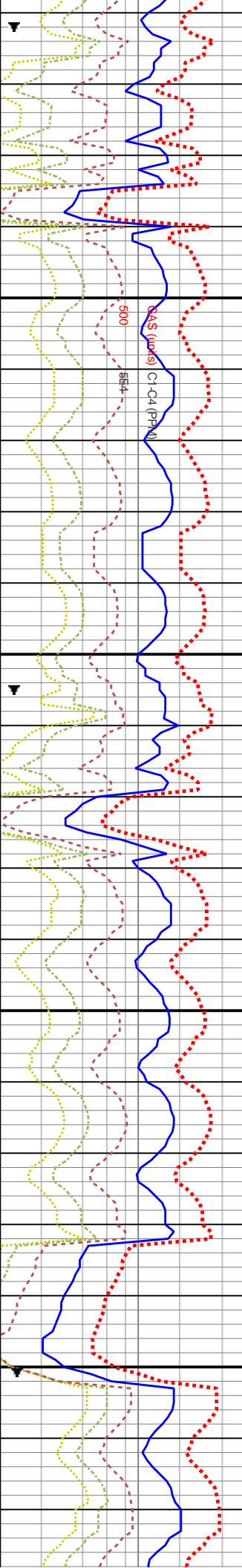
9,900

9,950

BGG: 900-1700u

2-5' Flare

2-5' Flare



7000

7000

9800-9860 SS: gy- lt gy, ip tnsi, abnt unconcs tnsi
ang- sb rnd med qtz grns, pred vf-f gmd, fri-frm, sb
rnd-rnd, occ sb ang, mod strd, clus- unconcs, calc
cmtd, tr cal, tr intgr por, abnt flor, tr lt gn

9860-9920 SS: gy- lt gy, ip tnsi, abnt unconcs tnsi
ang- sb rnd med qtz grns, pred vf-f gmd, fri-frm, sb
rnd-rnd, occ sb ang, mod strd, clus- unconcs, calc
cmtd, tr cal, tr intgr por, abnt flor, tr lt gn

9920-9980 SS: gy- lt gy, ip tnsi, abnt unconcs tnsi
ang- sb rnd med qtz grns, pred vf-f gmd, fri-frm, sb
rnd-rnd, occ sb ang, mod strd, clus- unconcs, calc
cmtd, tr cal, tr intgr por, abnt flor, tr lt gn

9980-10040 SS: gy- lt gy, ip tnsi, abnt unconcs tnsi
ang- sb rnd med qtz grns, pred vf-f gmd, fri-frm, sb
rnd-rnd, occ sb ang, mod strd, clus- unconcs, calc
cmtd, tr cal, tr intgr por, abnt flor, tr lt gn

TVD (ft)

MD: 9,774'
TVD: 7,294.26'
Inclination: 89.43°
Azimuth: 90.05°
VS: 2,321.81'

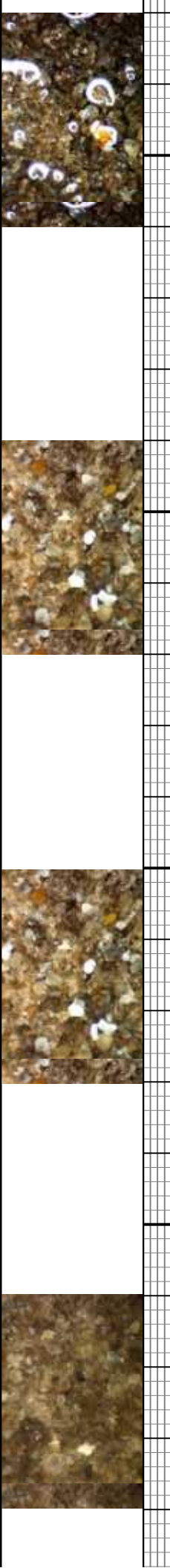
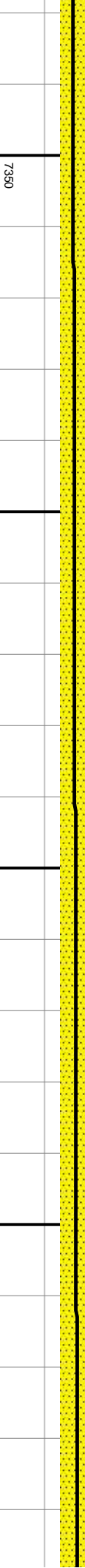
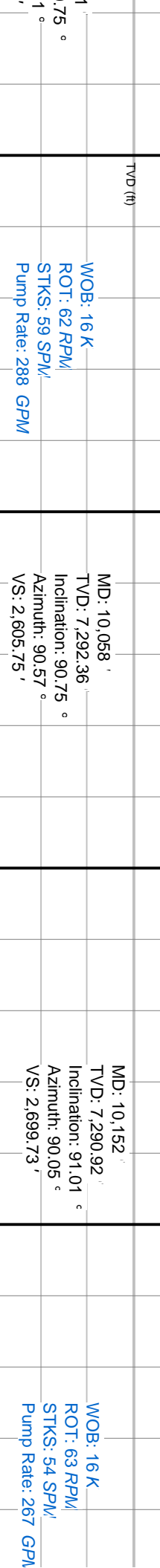
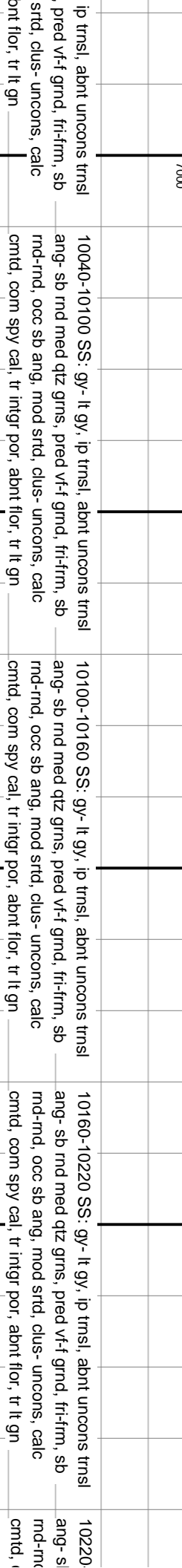
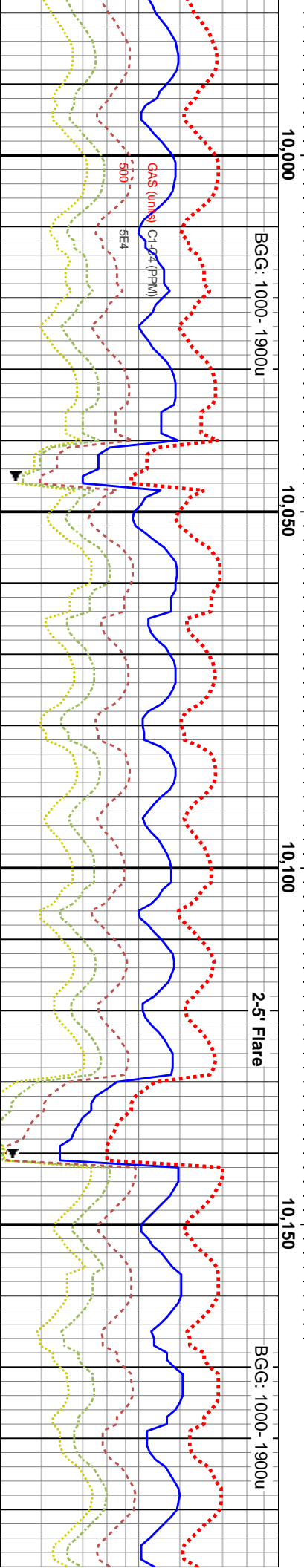
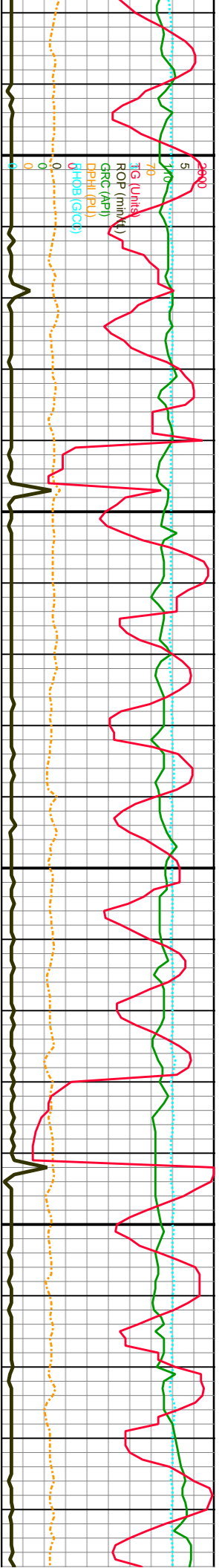
WOB: 14 K
ROT: 63 RPM
STKS: 57 SPM
Pump Rate: 280 GPM

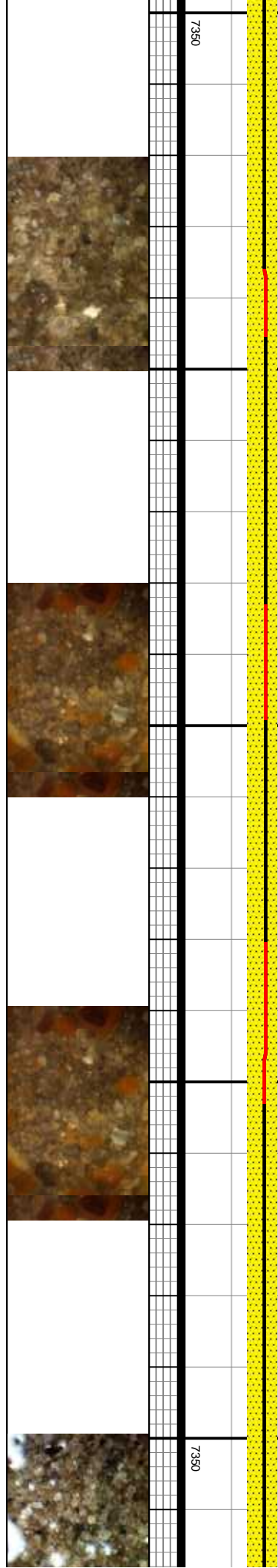
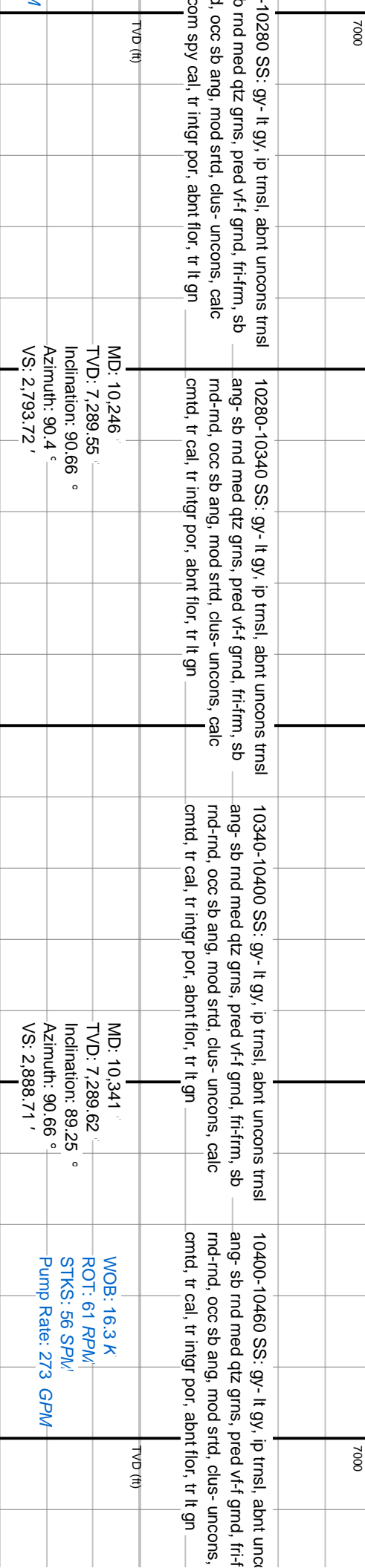
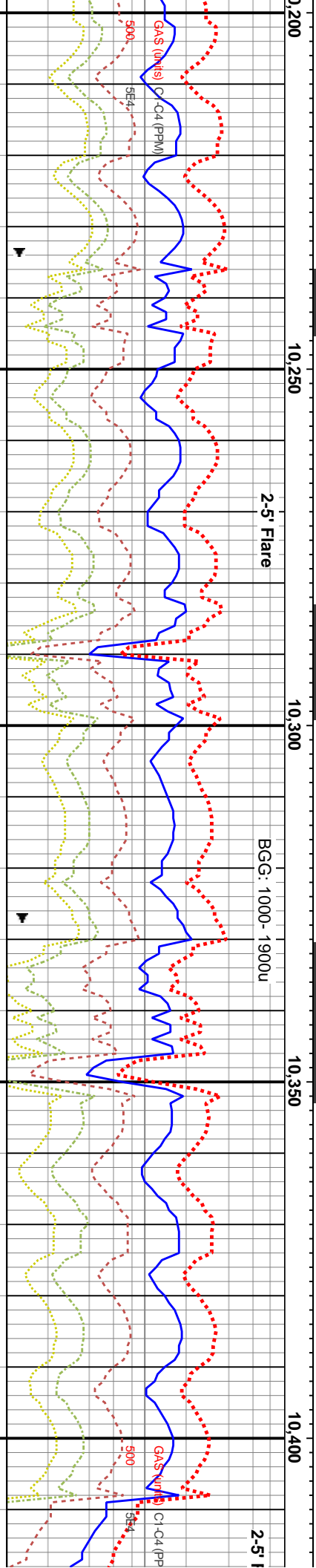
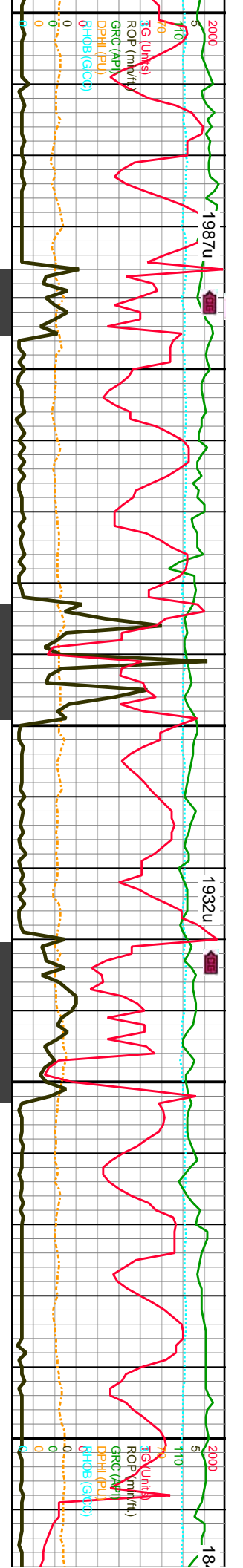
MD: 9,869'
TVD: 7,294.47'
Inclination: 90.31°
Azimuth: 90.84°
VS: 2,416.8'

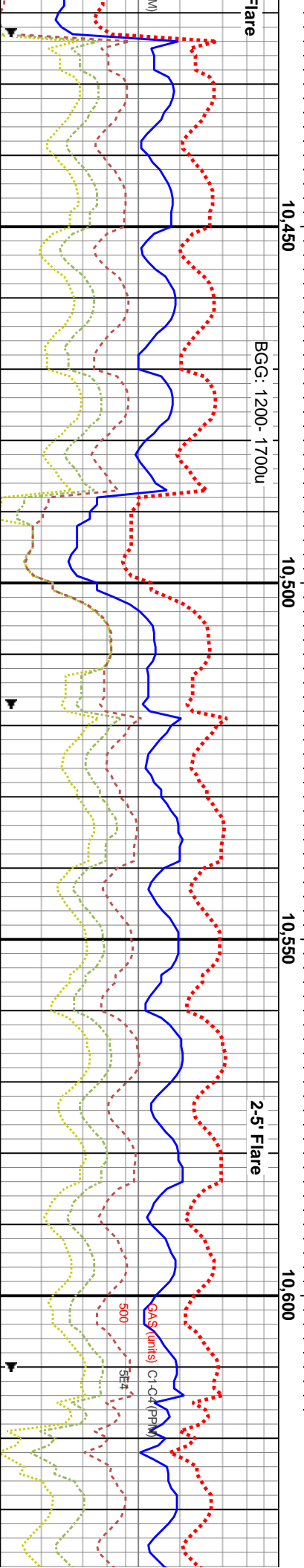
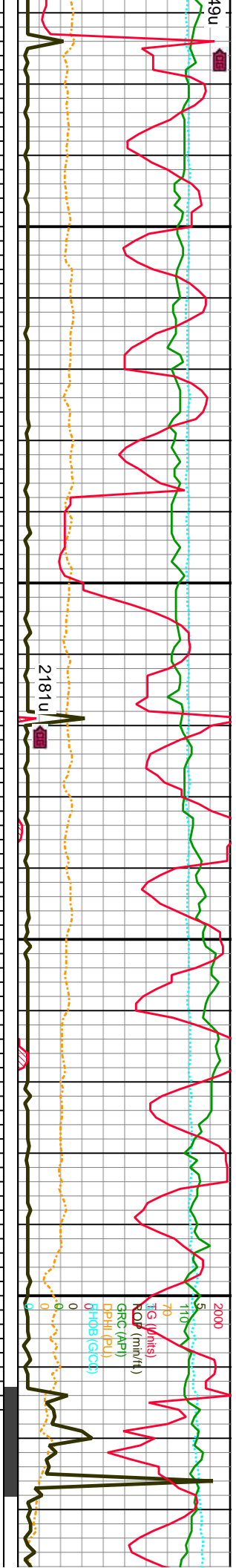
MD: 9,963'
TVD: 7,293.6'
Inclination: 90°
Azimuth: 91.0°
VS: 2,510.78'

7350

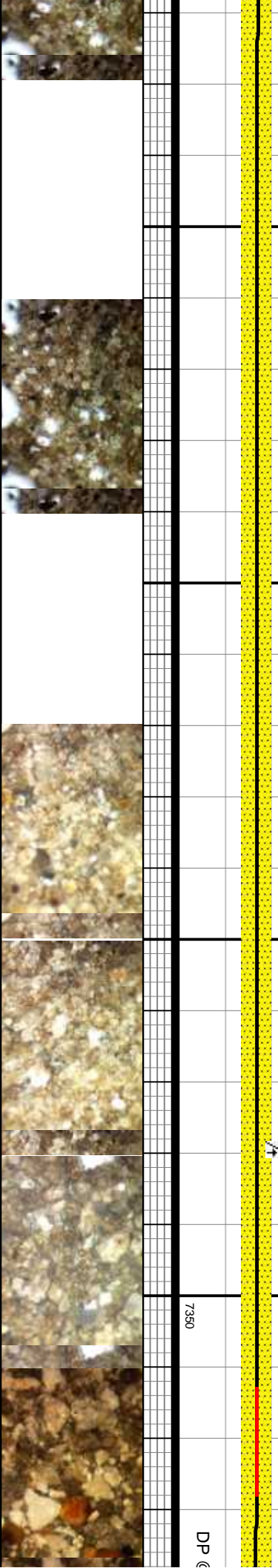


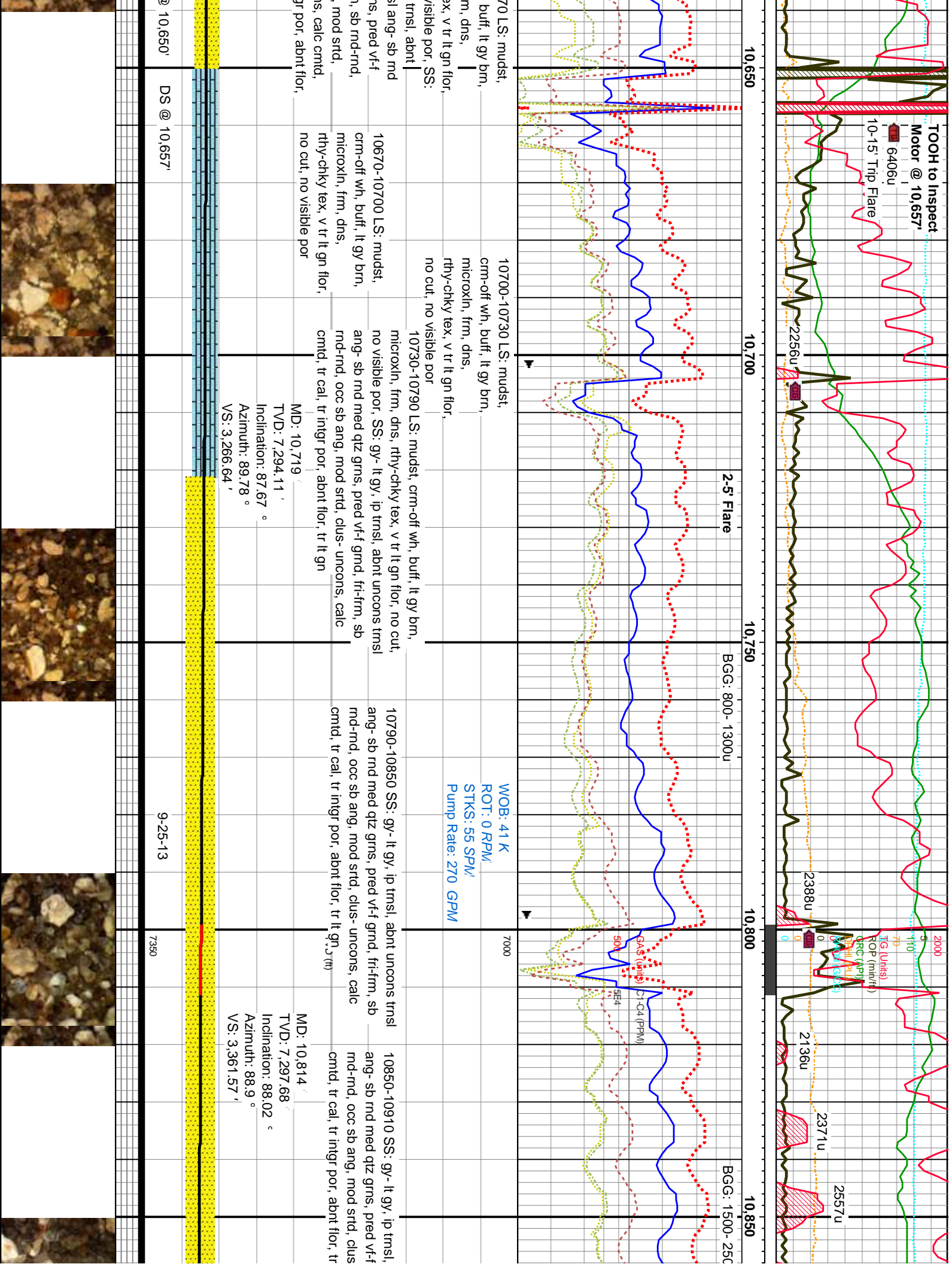


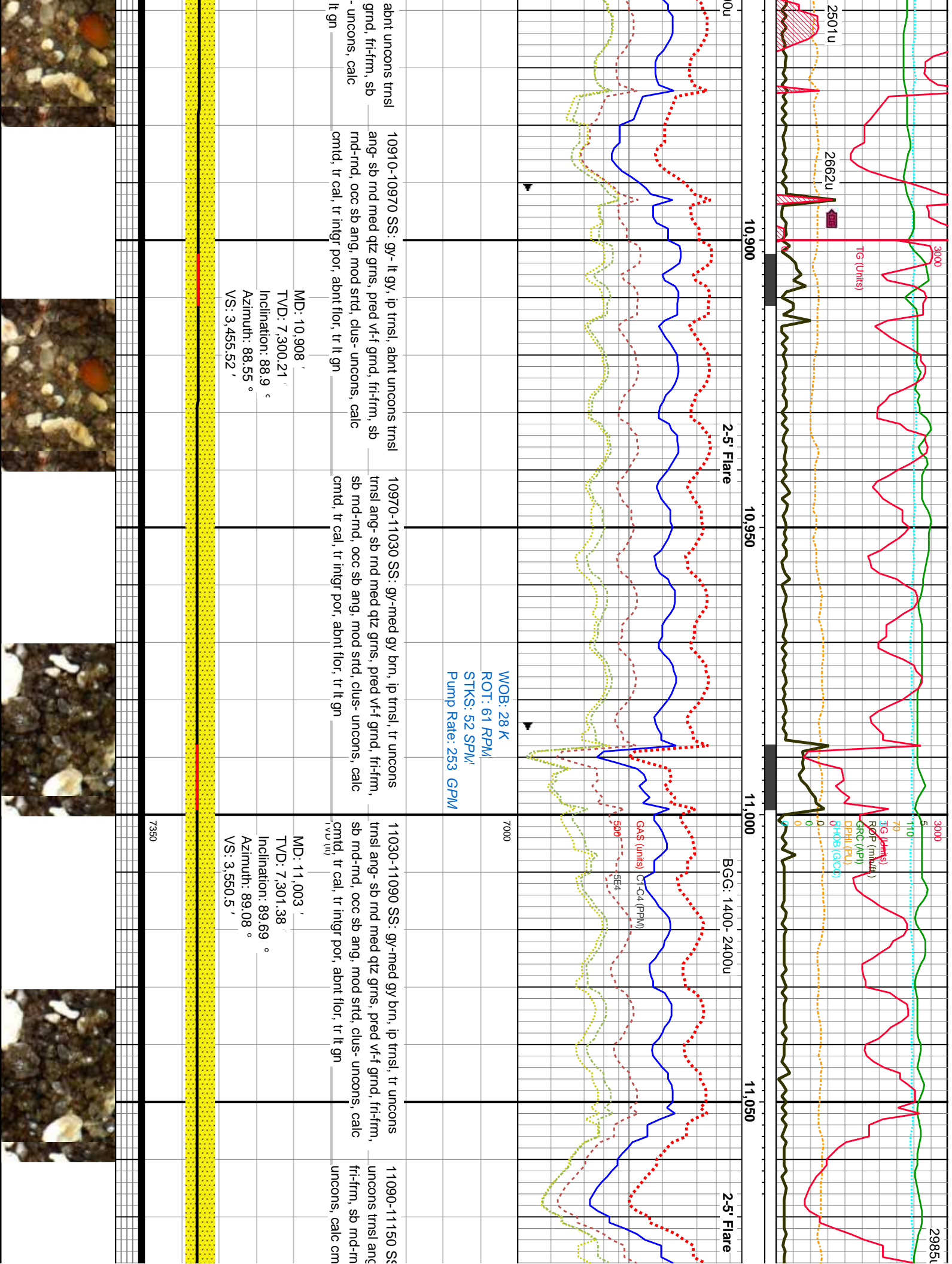


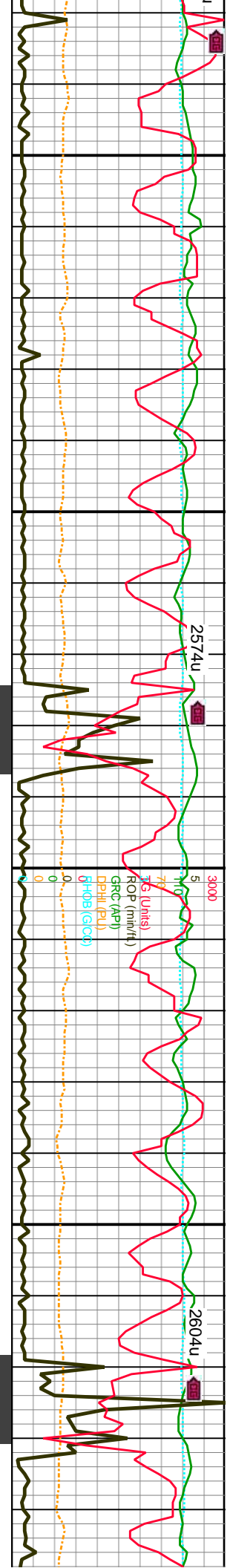


10460-10520 SS: gy- lt gy, ip trns, abnt uncon trns	10520-10550 SS: gy- lt gy, ip trns, abnt uncon trns	10550-10580 SS: gy- lt gy, ip trns, abnt uncon trns	10580-10610 SS: gy- lt gy, ip trns, abnt uncon trns	10610-10640 SS: gy- lt gy, ip trns, abnt uncon trns	10640-10660 SS: gy- lt gy, ip trns, abnt uncon trns
ang- sb rnd med qtz grns, pred vf- f gmd, fri- frm, sb	ang- sb rnd med qtz grns, pred vf- f gmd, fri- frm, sb	ang- sb rnd med qtz grns, pred vf- f gmd, fri- frm, sb	ang- sb rnd med qtz grns, pred vf- f gmd, fri- frm, sb	ang- sb rnd med qtz grns, pred vf- f gmd, fri- frm, sb	ang- sb rnd med qtz grns, pred vf- f gmd, fri- frm, sb
rnd- rnd, occ sb ang, mod strd, clus- uncon, calc	rnd- rnd, occ sb ang, mod strd, clus- uncon, calc	rnd- rnd, occ sb ang, mod strd, clus- uncon, calc	rnd- rnd, occ sb ang, mod strd, clus- uncon, calc	rnd- rnd, occ sb ang, mod strd, clus- uncon, calc	rnd- rnd, occ sb ang, mod strd, clus- uncon, calc
cmtd, tr cal, tr intgr por, abnt flr, tr lt gn	cmtd, tr cal, tr intgr por, abnt flr, tr lt gn	cmtd, tr cal, tr intgr por, abnt flr, tr lt gn	cmtd, tr cal, tr intgr por, abnt flr, tr lt gn	cmtd, tr cal, tr intgr por, abnt flr, tr lt gn	cmtd, tr cal, tr intgr por, abnt flr, tr lt gn
MD: 10,435'	MD: 10,530'	MD: 10,530'	MD: 10,530'	MD: 10,625'	MD: 10,625'
TVD: 7,290.93'	TVD: 7,291.37'	TVD: 7,291.37'	TVD: 7,291.37'	TVD: 7,291.66'	TVD: 7,291.66'
Inclination: 89.16 °	Inclination: 90.31 °	Inclination: 90.31 °	Inclination: 90.31 °	Inclination: 89.34 °	Inclination: 89.34 °
Azimuth: 90.22 °	Azimuth: 90.31 °	Azimuth: 90.31 °	Azimuth: 90.31 °	Azimuth: 90.05 °	Azimuth: 90.05 °
VS: 2,982.69'	VS: 3,077.68'	VS: 3,077.68'	VS: 3,077.68'	VS: 3,172.68'	VS: 3,172.68'









11,100

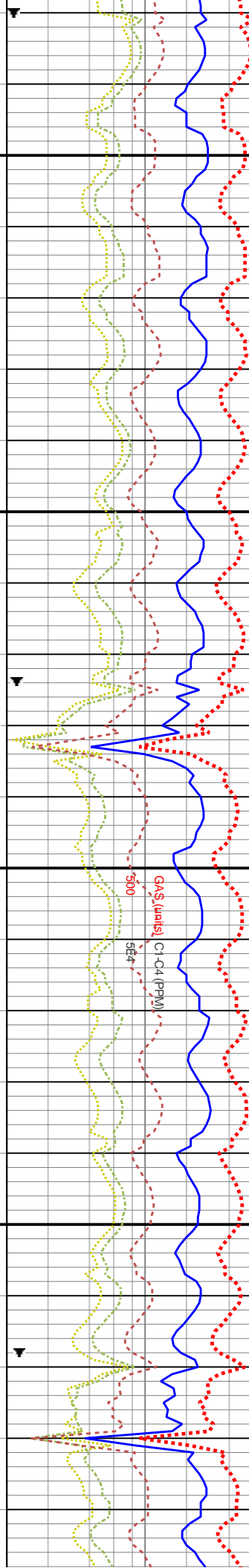
11,150

11,200

11,250

BGG: 500-2500u

2-5" Flare BGG: 1570-2700u



WOB: 22.2 K
ROT: 60 RPM/
STKS: 50 SPM/
Pump Rate: 247 GPM

7000

GAS (units) C1-C4 (PPM)
300 3000

3: gy-med gy brn, ip trns, com
sb md med qtz gms, pred vf-f grnd,
d, occ sb ang, mod srt, clus-
td, tr cal, tr intgr por, abnt flr, tr lt gn

11150-11210 SS: gy-med gy brn, ip trns, com
uncons trns ang- sb md med qtz gms, pred vf-f grnd,
fri-frn, sb md-rnd, occ sb ang, mod srt, clus-
uncons, calc cmt, tr cal, tr intgr por, abnt flr, tr lt gn

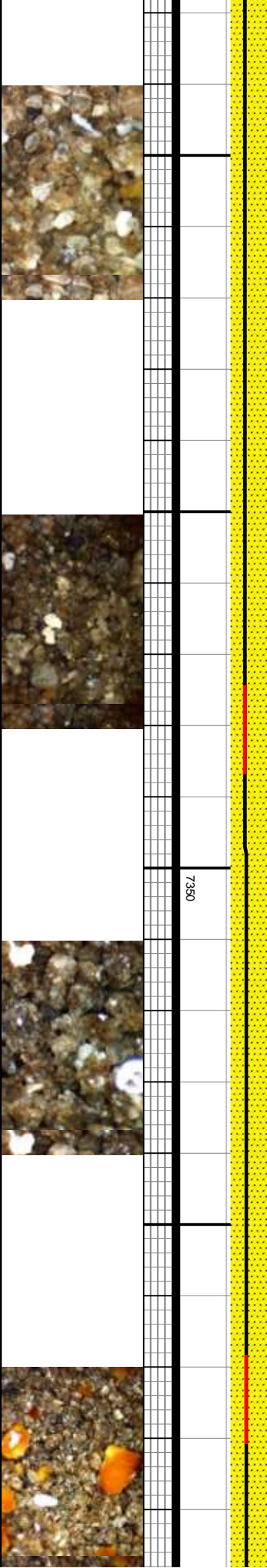
11210-11270 SS: gy-med gy brn, ip trns, com
uncons trns ang- sb md med qtz gms, pred vf-f grnd,
fri-frn, sb md-rnd, occ sb ang, mod srt, clus-
uncons, calc cmt, tr cal, tr intgr por, abnt flr, tr lt gn

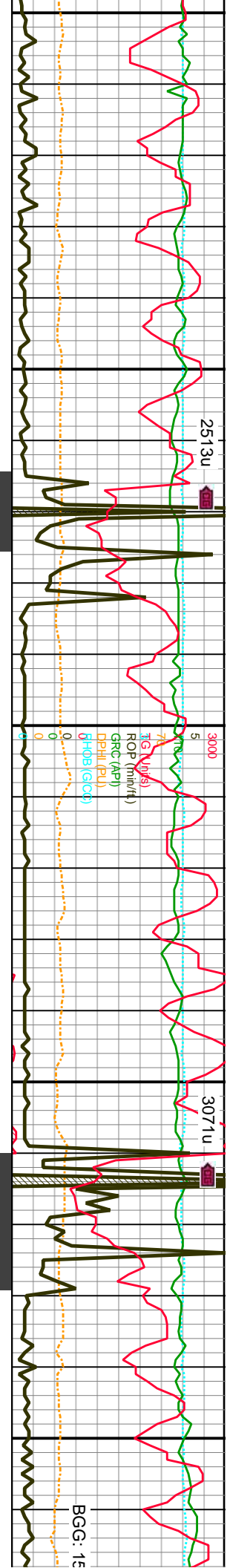
11270-11330 SS: gy-med gy brn, ip
com uncons trns ang- sb md med c
gms, pred vf-f grnd, fri-frn, sb md-r
sb ang, mod srt, clus- uncons, calc
cmt, tr cal, tr intgr por, abnt flr, tr lt

MD: 11,097 '
TVD: 7,301.16 '
Inclination: 90.57 °
Azimuth: 89.96 °
VS: 3,644.5'

MD: 11,192 '
TVD: 7,300.51 '
Inclination: 90.22 °
Azimuth: 90.57 °
VS: 3,739.49'

MD: 11,286 '
TVD: 7,296 '
Inclination: 90.22 °
Azimuth: 90.57 °
VS: 3,833.49'





11,330

11,400

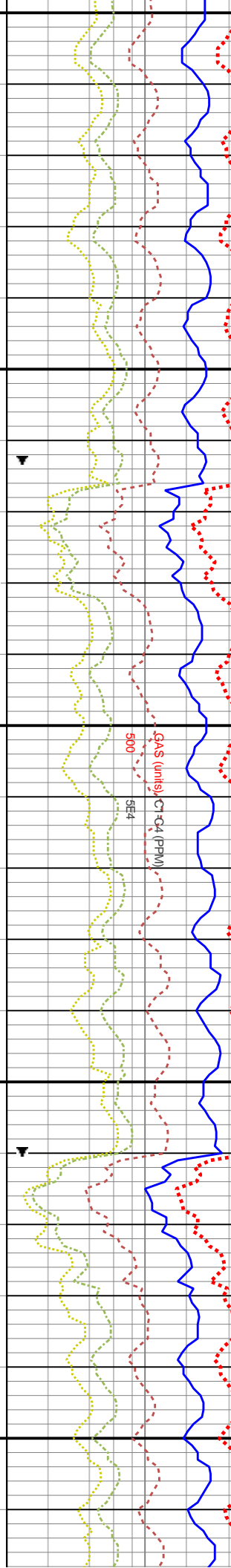
11,450

11,500

BGC: 1670-2680u

BGC: 1730-3050u

BGC: 1670-2680u



11,330

11,400

11,450

11,500

WOB: 18.1 K
ROT: 60 RPM/
STKS: 50 SPM/
Pump Rate: 246 GPM

7000

11330-11390 SS: gy-med- gy brn, ip tmsl, com uncons tmsl ang- sb rnd med qtz gms, pred vf-f grnd, fir-fm, sb rnd-rnd, occ sb ang, mod srt, clus- uncons, calc cntd, tr cal, tr intgr por, abnt flr, tr lt gn cut

11390-11450 SS: gy-med- gy brn, ip tmsl, com uncons tmsl ang- sb rnd med qtz gms, pred vf-f grnd, fir-fm, sb rnd-rnd, occ sb ang, mod srt, clus- uncons, calc cntd, arg, tr cal, tr intgr por, abnt flr, tr lt gn cut

1145-11510 SS: gy-med- gy brn, ip tmsl, com uncons tmsl ang- sb rnd med qtz gms, pred vf-f grnd, fir-fm, sb rnd-rnd, occ sb ang, mod srt, clus- uncons, calc cntd, tr cal, arg, tr intgr por, abnt flr, tr lt gn cut, tr LS from uphole

11510-11570 S tmsl, com unco qtz gms, pred v occ sb ang, mo cntd, tr cal, arg gn cut, tr LS

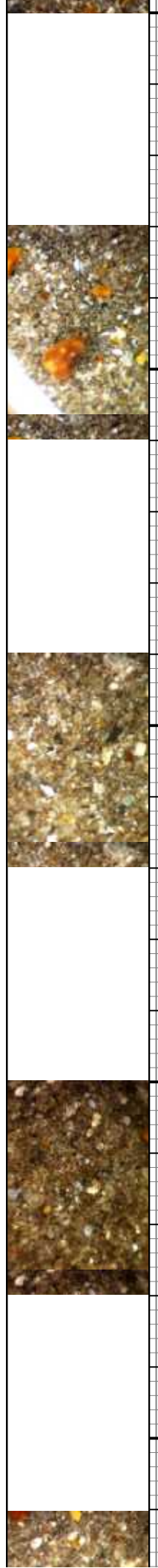
TVD (ft)

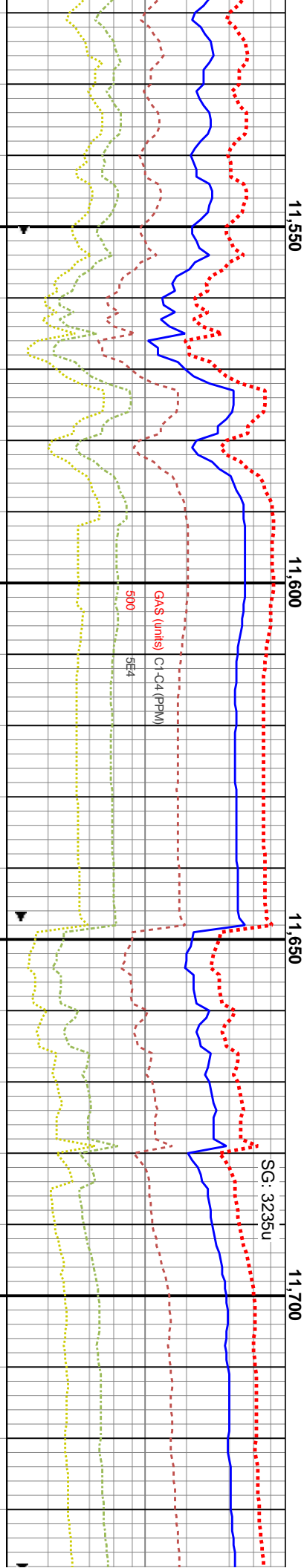
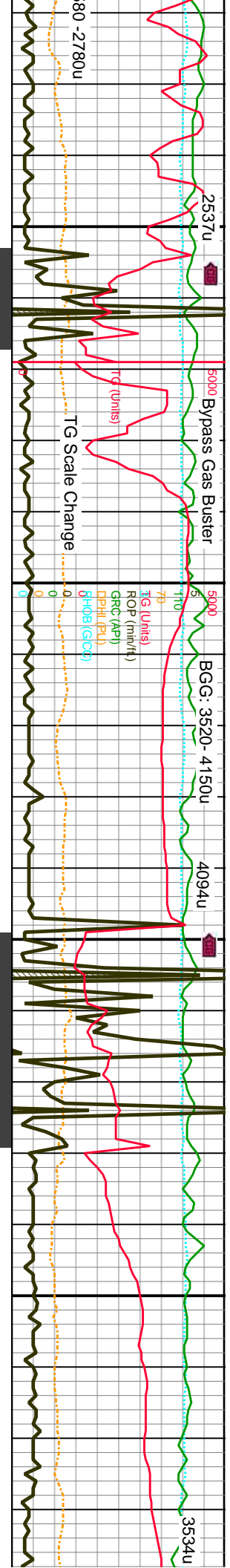
MD: 11,381'
TVD: 7,298.76'
Inclination: 90.4°
Azimuth: 92.24°
VS: 3,928.4'

MD: 11,475'
TVD: 7,299.05'
Inclination: 89.25°
Azimuth: 91.54°
VS: 4,022.33'

DP @ 11,389'

7350





S: med gy- gy brn, ip com tmsl ang- sb rnd med v-f grnd, fir-firm, sb rnd-rnd, d strd, clus- unconcs, calc , tr intgr por, abnt flr, tr lt		11570-11630 SS: med gy- gy brn, ip tmsl, com unconcs tmsl ang- sb rnd med qtz grns, pred v-f grnd, fir-firm, sb rnd-rnd, occ sb ang, mod strd, clus- unconcs, calc cntd, tr cal, arg, tr intgr por, abnt flr, tr lt gn cut; LS: mudst, crm-off wh, buff, lt gy brn, microxin, frm, dns, chky tex, sdy, pos ool	11630-11690 SS: med gy- gy brn, ip tmsl, com unconcs tmsl ang- sb rnd med qtz grns, pred v-f grnd, fir-firm, sb rnd-rnd, occ sb ang, mod strd, sme clus, pred unconcs, calc cntd, tr cal, arg, tr intgr por, abnt flr, tr lt gn cut; LS: mudst, crm-off wh, buff, lt gy brn, microxin, frm, dns, chky tex, sd	11690-11750 SS: med gy- gy brn, ip tmsl, com unconcs tmsl ang- sb rnd med qtz grns, pred v-f grnd, fir-firm, sb rnd-rnd, occ sb ang, mod strd, sme clus, pred unconcs, calc cntd, tr cal, tr intgr por, abnt flr, tr lt gn cut
MD: 11,569 ' TVD: 7,299.55 ' Inclination: 90.13 ° Azimuth: 91.63 ° VS: 4,116.28 '		WOB: 15.3 K ROT: 60 RPM/ STKS: 52 SPM/ Pump Rate: 258 GPM		

