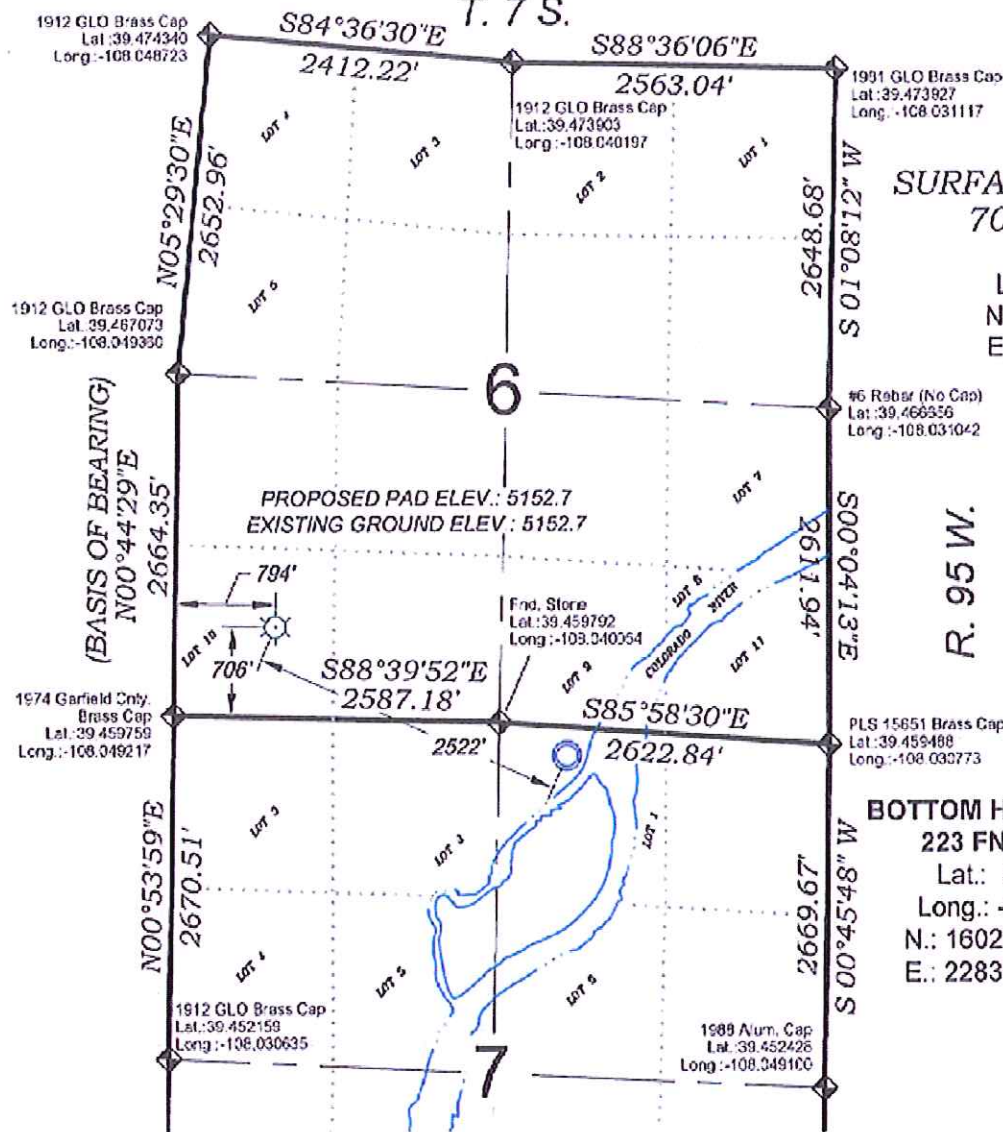


# Exxon Mobile Corp. PA 331-7

T. 7 S.



## SURFACE HOLE LOCATION

706 FSL, 794 FWL

Lat.: 39.461707 °

Long.: -108.046442 °

N.: 1603131.7 (COSP)

E.: 2281137.0 (COSP)

#6 Rebar (No Cap)  
Lat: 39.466556  
Long: -108.031042

PLS 15651 Brass Cap  
Lat: 39.459488  
Long: -108.033773

## BOTTOM HOLE LOCATION

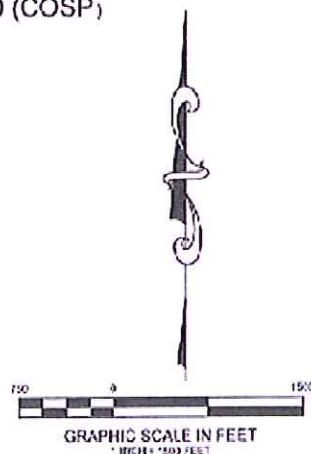
223 FNL, 2086 FEL

Lat.: 39.459118 °

Long.: -108.038155 °

N.: 1602123.7 (COSP)

E.: 2283449.3 (COSP)



SEE CONSTRUCTION LAYOUT  
PLAT FOR VISIBLE IMPROVEMENTS  
WITHIN 400' OF THIS LOCATION

## SURVEYORS STATEMENT

I, MICHAEL J. LANGHORNE, A REGISTERED LAND SURVEYOR IN THE STATE OF COLORADO DO HEREBY CERTIFY THAT THE SURVEY SHOWN HEREON WAS PREPARED UNDER MY DIRECT SUPERVISION AND HAS BEEN STAKED ON THE GROUND AS SHOWN ON THE PLAT AND CHECKING THAT THIS MAP IS A TRUE REPRESENTATION THEREOF.

MICHAEL J. LANGHORNE, COLORADO REGISTRATION NO. 36572  
FOR AND ON BEHALF OF  
BOOKCLIFF SURVEY SERVICES, INC.

## REFERENCES

- 1) DEPENDENT RESURVEY T. 7 S., R. 95 W., 6 th P.M. (GLO PLAT)
- 2) U.S.G.S. QUAD: PARACHUTE, CO

## - LEGEND -

FIELD LOCATED SECTION  
MONUMENTS AS DESCRIBED

FIELD SURVEYED  
WELL LOCATION

CALCULATED BOTTOM  
HOLE LOCATION

CALCULATED SECTION  
CORNER LOCATION

## NOTES

- 1) ELEVATIONS BASED ON N.A.V.D. 1988 PUBLISHED COORDINATES.
- 2) LATITUDES AND LONGITUDES ARE BASED ON NAD 83, PUBLISHED COORDINATES
- 3) STATE PLANE COORDINATES ARE BASED ON COLORADO CENTRAL ZONE, U.S. SURVEY FEET
- 4) ELEVATION MASK SET TO 15"
- 5) GPS OPERATOR J. KIRKPATRICK, OBSERVED A PDOP 3.4 ON SURVEY POINT NUMBER 28507.
- 6) SURFACE AND BOTTOM HOLE LOCATIONS ARE MEASURED 90° FROM SECTION LINES.

WELL LOCATION PLAT Prepared for:  
WPXENERGY. WPX Energy Rocky Mountain, LLC

SW1/4 SW1/4, SECTION 6  
T. 7 S., R. 95 W. of the 6th. P.M.  
GARFIELD COUNTY, COLORADO



SURVEY DATE:	6/19/08
MAP DATE:	1/7/13
SCALE:	1" = 1500'
PLAT:	1 of 1
PROJECT:	Yalieu