

Encana OIL & GAS (USA) INC.

LOCATION DRAWING FOR

WELL PAD C19 397

SECTION 19, T3S, R97W, 6th P.M.

NE 1/4 NW 1/4

200' 100' 0' 200'

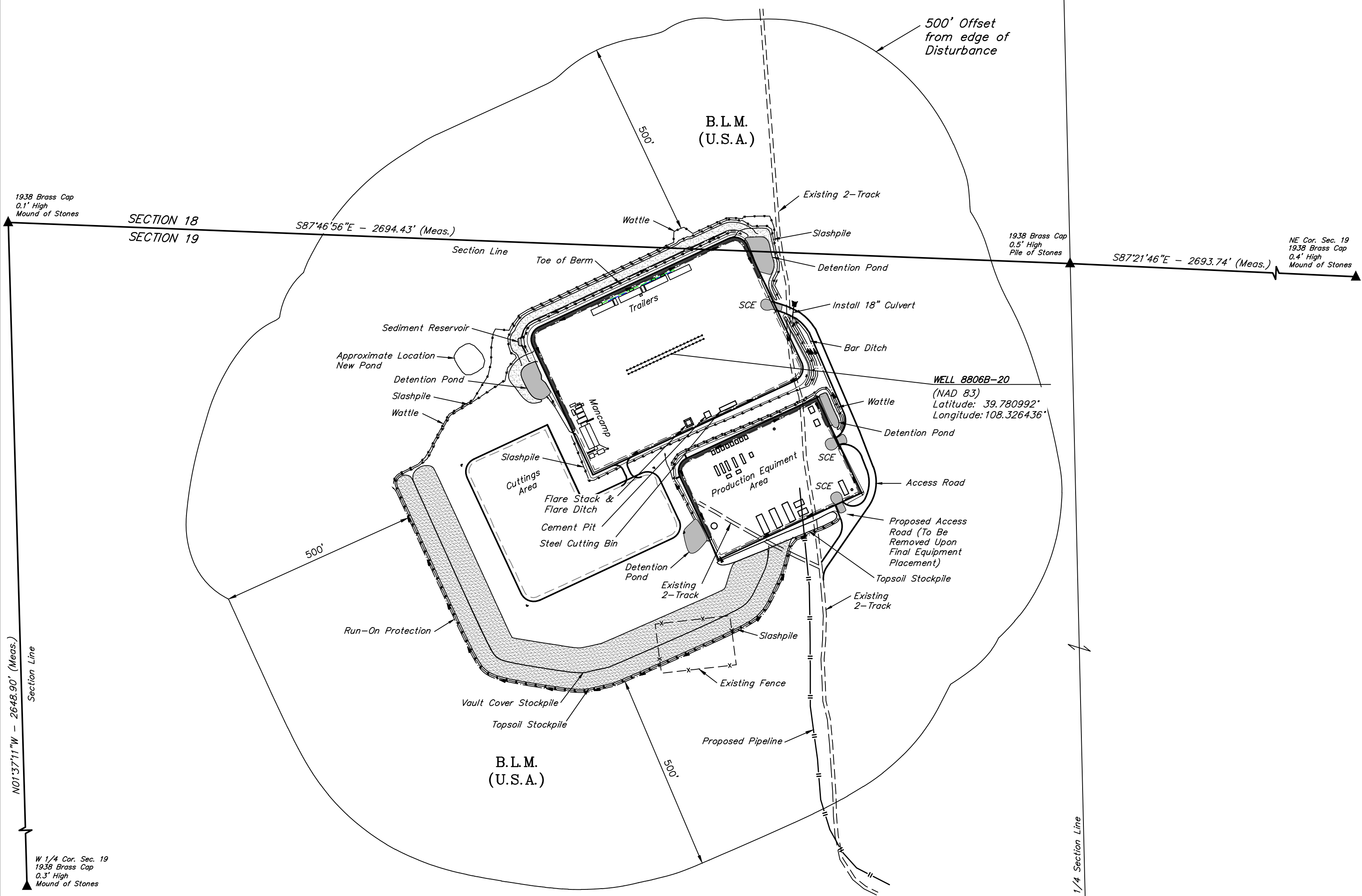
SCALE

Sheet 6a of 10

DATE: 05-17-13
DRAWN BY: T.B.
REVISED: 06-06-13
REVISED: 08-13-13 M.D.
REVISED: 09-17-13 T.B.



18



DISTURBANCE ACREAGE:

5.464 ± DRILLING OPERATIONS
1.776 ± INTERIM RECLAIM

PLANT COMMUNITY

- ☐ DISTURBED GRASSLAND
☐ NATIVE GRASSLAND
☐ SHRUB LAND
☐ PLAINS RIPARIAN
☐ MOUNTAIN RIPARIAN
☒ FOREST LAND
☐ WETLANDS AQUATIC
☐ ALPINE
☐ OTHER (Describe): _____

CURRENT LAND USE

- CROP LAND: ☐ IRRIGATED ☐ DRY LAND ☐ IMPROVED PASTURE ☐ HAY MEADOW ☐ CRP
NON-CROP LAND: ☒ RANGELAND ☐ TIMBER ☐ RECREATIONAL ☐ OTHER (Describe)
SUBDIVIDED: ☐ INDUSTRIAL ☐ COMMERCIAL ☐ RESIDENTIAL _____

FUTURE LAND USE

- CROP LAND: ☐ IRRIGATED ☐ DRY LAND ☐ IMPROVED PASTURE ☐ HAY MEADOW ☐ CRP
NON-CROP LAND: ☒ RANGELAND ☐ TIMBER ☐ RECREATIONAL ☐ OTHER (Describe)
SUBDIVIDED: ☐ INDUSTRIAL ☐ COMMERCIAL ☐ RESIDENTIAL _____

VISIBLE IMPROVEMENTS FROM PROPOSED WELL OR PRODUCTION EQUIPMENT	
Building	OVER 1 MILE
Building Unit	OVER 1 MILE
High Occupancy Building Unit	OVER 1 MILE
Designated Outside Activity Area	OVER 1 MILE
Public Road (CR69)	S60°E 1,200'
Above Ground Utility	OVER 1 MILE
Railroad	OVER 1 MILE
Property Line	S51°W 3,747'

19