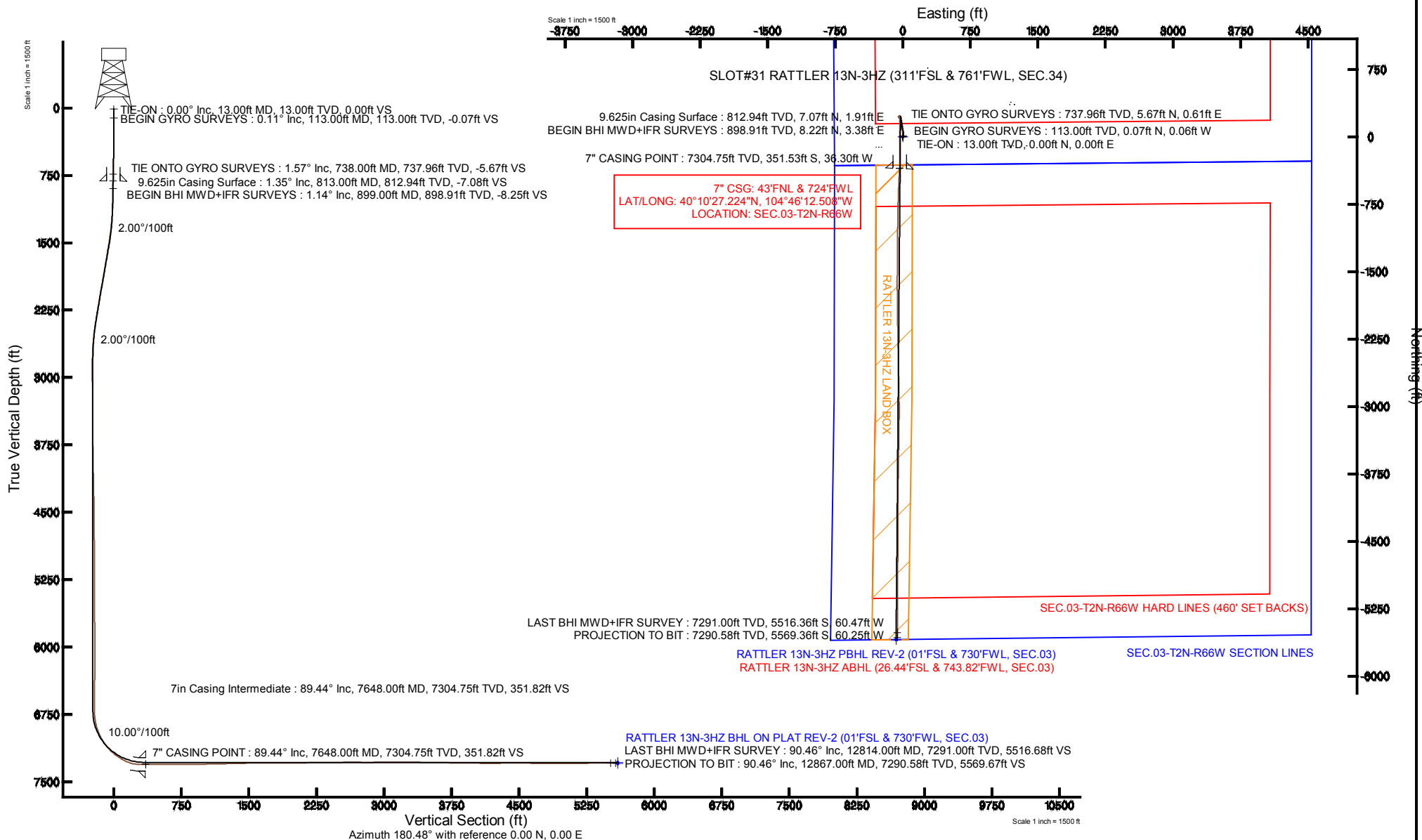


KERR-MCGEE OIL & GAS ONSHORE LP

Location: COLORADO Slot: SLOT#31 RATTLER 13N-3HZ (311'FSL & 761'FWL, SEC.34)
 Field: WELD COUNTY (KERR MCGEE) Well: RATTLER 13N-3HZ
 Facility: SEC.34-T3N-R66W Wellbore: RATTLER 13N-3HZ PWB

Plot reference wellpath is RATTLER 13N-3HZ (REV-B.0) PWB

True vertical depths are referenced to ENSIGN 145 (13KB) (RKB)	Grid System: NAD83 / Lambert Colorado SP, Northern Zone (501), US feet
Measured depths are referenced to ENSIGN 145 (13KB) (RKB)	North Reference: True north
ENSGN 145 (13KB) (RKB) to Mean Sea Level: 4983 feet	Scale: True distance
Mean Sea Level to Mud line (At Slot: SLOT#31 RATTLER 13N-3HZ (311'FSL & 761'FWL, SEC.34)): 0 feet	Depths are in feet
Coordinates are in feet referenced to Slot	Created by: robale01 on 11/Sep/2013





Actual Wellpath Report

RATTLER 13N-3HZ AWP

Page 1 of 6



REFERENCE WELLPATH IDENTIFICATION

Operator	KERR-MCGEE OIL & GAS ONSHORE LP	Slot	SLOT#31 RATTLER 13N-3HZ (311'FSL & 761'FWL, SEC.34)
Area	COLORADO	Well	RATTLER 13N-3HZ
Field	WELD COUNTY (KERR MCGEE)	Wellbore	RATTLER 13N-3HZ AWB
Facility	SEC.34-T3N-R66W		

REPORT SETUP INFORMATION

Projection System	NAD83 / Lambert Colorado SP, Northern Zone (501), US feet	Software System	WellArchitect® 4.0.0
North Reference	True	User	Robiale01
Scale	0.999958	Report Generated	11/Sep/2013 at 15:13
Convergence at slot	n/a	Database/Source file	WA_ANADARKO/RATTLER_13N-3HZ_AWB.xml

WELLPATH LOCATION

	Local coordinates		Grid coordinates		Geographic coordinates	
	North[ft]	East[ft]	Easting[US ft]	Northing[US ft]	Latitude	Longitude
Slot Location	-1623.35	108.67	3203981.33	1307505.64	40°10'30.698"N	104°46'12.040"W
Facility Reference Pt			3203859.31	1309127.97	40°10'46.740"N	104°46'13.440"W
Field Reference Pt			3197771.84	1268891.29	40°04'09.600"N	104°47'36.000"W

WELLPATH DATUM

Calculation method	Minimum curvature	ENSIGN 145 (13'KB) (RKB) to Facility Vertical Datum	4983.00ft
Horizontal Reference Pt	Slot	ENSIGN 145 (13'KB) (RKB) to Mean Sea Level	4983.00ft
Vertical Reference Pt	ENSIGN 145 (13'KB) (RKB)	ENSIGN 145 (13'KB) (RKB) to Mud Line at Slot (SLOT#31 RATTLER 13N-3HZ (311'FSL & 761'FWL, SEC.34))	4983.00ft
MD Reference Pt	ENSIGN 145 (13'KB) (RKB)	Section Origin	N 0.00, E 0.00 ft
Field Vertical Reference	Mean Sea Level	Section Azimuth	180.48°



Actual Wellpath Report

RATTLER 13N-3HZ AWP

Page 2 of 6



REFERENCE WELLPATH IDENTIFICATION

Operator	KERR-MCGEE OIL & GAS ONSHORE LP	Slot	SLOT#31 RATTLER 13N-3HZ (311'FSL & 761'FWL, SEC.34)
Area	COLORADO	Well	RATTLER 13N-3HZ
Field	WELD COUNTY (KERR MCGEE)	Wellbore	RATTLER 13N-3HZ AWP
Facility	SEC.34-T3N-R66W		

WELLPATH DATA (126 stations) † = interpolated/extrapolated station

MD [ft]	Inclination [°]	Azimuth [°]	TVD [ft]	Vert Sect [ft]	North [ft]	East [ft]	Latitude	Longitude	DLS [°/100ft]	Comments
0.00†	0.000	320.710	0.00	0.00	0.00	0.00	40°10'30.698"N	104°46'12.040"W	0.00	
13.00	0.000	320.710	13.00	0.00	0.00	0.00	40°10'30.698"N	104°46'12.040"W	0.00	TIE-ON
113.00	0.110	320.710	113.00	-0.07	0.07	-0.06	40°10'30.699"N	104°46'12.041"W	0.11	BEGIN GYRO SURVEYS
213.00	0.200	314.940	213.00	-0.27	0.27	-0.25	40°10'30.701"N	104°46'12.043"W	0.09	
313.00	0.290	358.370	313.00	-0.64	0.65	-0.38	40°10'30.704"N	104°46'12.045"W	0.20	
413.00	0.380	347.660	413.00	-1.22	1.23	-0.45	40°10'30.710"N	104°46'12.046"W	0.11	
513.00	0.600	0.290	512.99	-2.07	2.07	-0.52	40°10'30.718"N	104°46'12.047"W	0.24	
613.00	1.020	13.130	612.98	-3.46	3.46	-0.32	40°10'30.732"N	104°46'12.044"W	0.45	
713.00	1.090	25.470	712.97	-5.19	5.19	0.29	40°10'30.749"N	104°46'12.036"W	0.24	
738.00	1.570	39.610	737.96	-5.67	5.67	0.61	40°10'30.754"N	104°46'12.032"W	2.31	TIE ONTO GYRO SURVEYS
899.00	1.140	57.850	898.91	-8.25	8.22	3.38	40°10'30.779"N	104°46'11.996"W	0.38	BEGIN BHI MWD+IFR SURVEYS
992.00	0.960	54.680	991.90	-9.20	9.16	4.80	40°10'30.789"N	104°46'11.978"W	0.20	
1086.00	2.140	22.800	1085.86	-11.29	11.23	6.12	40°10'30.809"N	104°46'11.961"W	1.51	
1180.00	3.990	4.180	1179.73	-16.17	16.11	7.04	40°10'30.857"N	104°46'11.949"W	2.21	
1273.00	5.370	352.460	1272.42	-23.71	23.66	6.70	40°10'30.932"N	104°46'11.954"W	1.80	
1367.00	7.440	353.410	1365.83	-34.11	34.06	5.43	40°10'31.035"N	104°46'11.970"W	2.20	
1461.00	8.950	350.320	1458.86	-47.35	47.32	3.50	40°10'31.166"N	104°46'11.995"W	1.67	
1554.00	9.440	343.860	1550.67	-61.77	61.78	0.16	40°10'31.308"N	104°46'12.038"W	1.23	
1648.00	9.660	341.050	1643.37	-76.60	76.64	-4.54	40°10'31.455"N	104°46'12.099"W	0.55	
1741.00	9.660	347.610	1735.05	-91.56	91.64	-8.75	40°10'31.604"N	104°46'12.153"W	1.18	
1835.00	9.250	353.670	1827.78	-106.75	106.85	-11.28	40°10'31.754"N	104°46'12.185"W	1.14	
1929.00	10.360	355.570	1920.40	-122.68	122.79	-12.76	40°10'31.911"N	104°46'12.204"W	1.23	
2019.00	10.110	353.570	2008.97	-138.58	138.71	-14.27	40°10'32.069"N	104°46'12.224"W	0.48	
2109.00	9.620	348.500	2097.64	-153.78	153.93	-16.66	40°10'32.219"N	104°46'12.255"W	1.11	
2199.00	9.170	344.340	2186.44	-168.03	168.20	-20.09	40°10'32.360"N	104°46'12.299"W	0.90	
2289.00	9.360	346.750	2275.26	-182.02	182.23	-23.70	40°10'32.499"N	104°46'12.345"W	0.48	
2379.00	8.900	351.150	2364.12	-196.00	196.23	-26.45	40°10'32.637"N	104°46'12.381"W	0.93	
2469.00	8.260	351.580	2453.12	-209.26	209.51	-28.47	40°10'32.768"N	104°46'12.407"W	0.71	
2559.00	6.790	354.450	2542.34	-220.94	221.20	-29.93	40°10'32.884"N	104°46'12.426"W	1.69	
2649.00	4.370	348.860	2631.91	-229.59	229.86	-31.11	40°10'32.969"N	104°46'12.441"W	2.75	
2739.00	3.070	337.460	2721.72	-235.17	235.45	-32.70	40°10'33.025"N	104°46'12.461"W	1.66	
2829.00	1.170	288.990	2811.66	-237.68	237.98	-34.49	40°10'33.050"N	104°46'12.484"W	2.73	
2919.00	0.190	241.590	2901.65	-237.90	238.20	-35.49	40°10'33.052"N	104°46'12.497"W	1.17	
3099.00	0.560	204.420	3081.64	-236.95	237.26	-36.11	40°10'33.043"N	104°46'12.505"W	0.24	
3459.00	0.150	217.030	3441.64	-234.96	235.28	-37.13	40°10'33.023"N	104°46'12.518"W	0.12	
3819.00	1.120	221.720	3801.61	-231.94	232.28	-39.75	40°10'32.993"N	104°46'12.552"W	0.27	
4179.00	1.680	221.820	4161.50	-225.33	225.72	-45.61	40°10'32.929"N	104°46'12.628"W	0.16	
4539.00	0.840	118.050	4521.44	-220.15	220.55	-46.80	40°10'32.877"N	104°46'12.643"W	0.57	
4901.00	1.050	146.020	4883.40	-216.18	216.55	-42.61	40°10'32.838"N	104°46'12.589"W	0.14	
5261.00	0.370	20.480	5243.38	-214.56	214.90	-40.36	40°10'32.822"N	104°46'12.560"W	0.36	
5623.00	0.650	162.340	5605.37	-213.70	214.04	-39.32	40°10'32.813"N	104°46'12.547"W	0.27	
5984.00	0.930	157.700	5966.34	-209.06	209.38	-37.59	40°10'32.767"N	104°46'12.524"W	0.08	
6254.00	1.330	17.370	6236.31	-210.03	210.34	-35.82	40°10'32.777"N	104°46'12.502"W	0.79	
6434.00	0.510	18.020	6416.29	-212.80	213.10	-34.95	40°10'32.804"N	104°46'12.490"W	0.46	
6670.00	0.790	358.300	6652.27	-215.42	215.72	-34.68	40°10'32.830"N	104°46'12.487"W	0.15	



Actual Wellpath Report

RATTLER 13N-3HZ AWP

Page 3 of 6



REFERENCE WELLPATH IDENTIFICATION

Operator	KERR-MCGEE OIL & GAS ONSHORE LP	Slot	SLOT#31 RATTLER 13N-3HZ (311'FSL & 761'FWL, SEC.34)
Area	COLORADO	Well	RATTLER 13N-3HZ
Field	WELD COUNTY (KERR MCGEE)	Wellbore	RATTLER 13N-3HZ AWB
Facility	SEC.34-T3N-R66W		

WELLPATH DATA (126 stations) † = interpolated/extrapolated station

MD [ft]	Inclination [°]	Azimuth [°]	TVD [ft]	Vert Sect [ft]	North [ft]	East [ft]	Latitude	Longitude	DLS [°/100ft]	Comments
6703.00	0.510	22.230	6685.27	-215.79	216.09	-34.63	40°10'32.833"N	104°46'12.486"W	1.16	
6748.00	1.970	171.120	6730.26	-215.21	215.51	-34.43	40°10'32.828"N	104°46'12.484"W	5.38	
6793.00	5.840	180.300	6775.15	-212.16	212.45	-34.32	40°10'32.797"N	104°46'12.482"W	8.68	
6838.00	9.710	179.760	6819.73	-206.07	206.37	-34.32	40°10'32.737"N	104°46'12.482"W	8.60	
6883.00	13.710	178.710	6863.78	-196.94	197.24	-34.18	40°10'32.647"N	104°46'12.480"W	8.90	
6928.00	17.610	178.910	6907.10	-184.80	185.10	-33.93	40°10'32.527"N	104°46'12.477"W	8.67	
6972.00	21.880	179.050	6948.51	-169.95	170.24	-33.67	40°10'32.380"N	104°46'12.474"W	9.71	
7017.00	26.040	178.170	6989.62	-151.69	151.97	-33.22	40°10'32.200"N	104°46'12.468"W	9.28	
7062.00	30.590	177.610	7029.23	-130.37	130.65	-32.42	40°10'31.989"N	104°46'12.458"W	10.13	
7107.00	34.600	179.450	7067.13	-106.15	106.42	-31.82	40°10'31.750"N	104°46'12.450"W	9.18	
7152.00	38.920	181.150	7103.18	-79.23	79.50	-31.98	40°10'31.484"N	104°46'12.452"W	9.86	
7197.00	43.340	180.910	7137.06	-49.64	49.91	-32.51	40°10'31.191"N	104°46'12.459"W	9.83	
7242.00	47.530	180.800	7168.63	-17.58	17.86	-32.99	40°10'30.875"N	104°46'12.465"W	9.31	
7287.00	52.150	180.010	7197.65	16.80	-16.52	-33.23	40°10'30.535"N	104°46'12.468"W	10.35	
7332.00	57.090	179.540	7223.69	53.47	-53.20	-33.08	40°10'30.172"N	104°46'12.466"W	11.01	
7377.00	59.510	180.400	7247.34	91.75	-91.48	-33.06	40°10'29.794"N	104°46'12.466"W	5.62	
7422.00	63.740	180.160	7268.72	131.34	-131.06	-33.25	40°10'29.403"N	104°46'12.468"W	9.41	
7467.00	71.000	179.090	7286.02	172.84	-172.57	-32.97	40°10'28.993"N	104°46'12.465"W	16.28	
7512.00	78.950	179.090	7297.68	216.25	-215.99	-32.28	40°10'28.564"N	104°46'12.456"W	17.67	
7557.00	87.460	181.550	7303.00	260.89	-260.63	-32.54	40°10'28.122"N	104°46'12.459"W	19.67	
7604.00	89.380	182.620	7304.30	307.85	-307.58	-34.25	40°10'27.659"N	104°46'12.481"W	4.68	
7648.00†	89.437	182.719	7304.75	351.82	-351.53	-36.30	40°10'27.224"N	104°46'12.508"W	0.26	7" CASING POINT
7719.00	89.530	182.880	7305.39	422.76	-422.44	-39.77	40°10'26.523"N	104°46'12.552"W	0.26	
7809.00	89.900	182.600	7305.84	512.69	-512.33	-44.07	40°10'25.635"N	104°46'12.608"W	0.52	
7899.00	90.090	181.900	7305.85	602.64	-602.26	-47.60	40°10'24.746"N	104°46'12.653"W	0.81	
7989.00	90.400	181.550	7305.46	692.62	-692.22	-50.31	40°10'23.857"N	104°46'12.688"W	0.52	
8079.00	90.150	181.080	7305.03	782.61	-782.20	-52.38	40°10'22.968"N	104°46'12.715"W	0.59	
8169.00	90.670	181.190	7304.38	872.60	-872.18	-54.16	40°10'22.079"N	104°46'12.738"W	0.59	
8259.00	90.770	180.820	7303.25	962.59	-962.16	-55.74	40°10'21.190"N	104°46'12.758"W	0.43	
8349.00	90.760	180.540	7302.05	1052.58	-1052.14	-56.80	40°10'20.301"N	104°46'12.772"W	0.31	
8439.00	91.500	181.200	7300.28	1142.56	-1142.11	-58.17	40°10'19.412"N	104°46'12.789"W	1.10	
8529.00	91.720	180.550	7297.75	1232.52	-1232.07	-59.54	40°10'18.523"N	104°46'12.807"W	0.76	
8619.00	91.690	180.380	7295.07	1322.48	-1322.02	-60.27	40°10'17.634"N	104°46'12.816"W	0.19	
8709.00	90.800	180.150	7293.12	1412.46	-1412.00	-60.69	40°10'16.745"N	104°46'12.822"W	1.02	
8799.00	91.570	180.320	7291.25	1502.44	-1501.98	-61.06	40°10'15.855"N	104°46'12.827"W	0.88	
8889.00	90.490	180.420	7289.64	1592.42	-1591.96	-61.64	40°10'14.966"N	104°46'12.834"W	1.21	
8979.00	90.240	179.420	7289.06	1682.42	-1681.96	-61.52	40°10'14.077"N	104°46'12.832"W	1.15	
9069.00	90.760	179.300	7288.28	1772.40	-1771.95	-60.51	40°10'13.188"N	104°46'12.819"W	0.59	
9159.00	89.590	179.030	7288.00	1862.37	-1861.94	-59.20	40°10'12.298"N	104°46'12.803"W	1.33	
9249.00	89.660	179.300	7288.59	1952.34	-1951.93	-57.89	40°10'11.409"N	104°46'12.786"W	0.31	
9339.00	90.490	179.560	7288.47	2042.33	-2041.92	-56.99	40°10'10.520"N	104°46'12.774"W	0.97	
9429.00	90.860	179.190	7287.41	2132.30	-2131.91	-56.01	40°10'09.630"N	104°46'12.761"W	0.58	
9519.00	91.450	178.600	7285.60	2222.25	-2221.87	-54.27	40°10'08.741"N	104°46'12.739"W	0.93	
9609.00	90.950	178.700	7283.71	2312.19	-2311.83	-52.15	40°10'07.852"N	104°46'12.712"W	0.57	
9699.00	90.240	179.330	7282.78	2402.15	-2401.81	-50.61	40°10'06.963"N	104°46'12.692"W	1.05	



Actual Wellpath Report

RATTLER 13N-3HZ AWP

Page 4 of 6



REFERENCE WELLPATH IDENTIFICATION

Operator	KERR-MCGEE OIL & GAS ONSHORE LP	Slot	SLOT#31 RATTLER 13N-3HZ (311'FSL & 761'FWL, SEC.34)
Area	COLORADO	Well	RATTLER 13N-3HZ
Field	WELD COUNTY (KERR MCGEE)	Wellbore	RATTLER 13N-3HZ AWP
Facility	SEC.34-T3N-R66W		

WELLPATH DATA (126 stations)

MD [ft]	Inclination [°]	Azimuth [°]	TVD [ft]	Vert Sect [ft]	North [ft]	East [ft]	Latitude	Longitude	DLS [°/100ft]	Comments
9789.00	90.060	179.350	7282.54	2492.13	-2491.80	-49.57	40°10'06.074"N	104°46'12.679"W	0.20	
9879.00	90.640	178.680	7281.99	2582.10	-2581.79	-48.02	40°10'05.185"N	104°46'12.659"W	0.98	
9969.00	89.590	179.090	7281.81	2672.06	-2671.77	-46.27	40°10'04.296"N	104°46'12.636"W	1.25	
10060.00	89.530	179.290	7282.51	2763.04	-2762.76	-44.99	40°10'03.396"N	104°46'12.619"W	0.23	
10148.00	90.400	178.870	7282.57	2851.01	-2850.74	-43.57	40°10'02.527"N	104°46'12.601"W	1.10	
10238.00	91.010	178.550	7281.46	2940.96	-2940.71	-41.55	40°10'01.638"N	104°46'12.575"W	0.77	
10328.00	90.430	180.000	7280.33	3030.93	-3030.70	-40.41	40°10'00.749"N	104°46'12.561"W	1.74	
10418.00	89.530	180.670	7280.36	3120.93	-3120.69	-40.94	40°09'59.859"N	104°46'12.567"W	1.25	
10508.00	90.180	180.750	7280.59	3210.93	-3210.69	-42.05	40°09'58.970"N	104°46'12.582"W	0.73	
10598.00	90.060	180.740	7280.40	3300.92	-3300.68	-43.22	40°09'58.081"N	104°46'12.597"W	0.13	
10689.00	88.300	181.230	7281.70	3391.91	-3391.65	-44.78	40°09'57.182"N	104°46'12.617"W	2.01	
10778.00	88.890	180.600	7283.88	3480.88	-3480.61	-46.21	40°09'56.302"N	104°46'12.635"W	0.97	
10868.00	89.840	180.740	7284.88	3570.87	-3570.60	-47.26	40°09'55.413"N	104°46'12.649"W	1.07	
10958.00	88.580	181.040	7286.12	3660.86	-3660.58	-48.66	40°09'54.524"N	104°46'12.667"W	1.44	
11048.00	89.290	181.060	7287.79	3750.84	-3750.55	-50.30	40°09'53.635"N	104°46'12.688"W	0.79	
11139.00	90.000	180.700	7288.36	3841.83	-3841.53	-51.70	40°09'52.736"N	104°46'12.706"W	0.87	
11229.00	88.480	179.900	7289.55	3931.82	-3931.52	-52.17	40°09'51.847"N	104°46'12.712"W	1.91	
11318.00	89.010	179.980	7291.50	4020.80	-4020.50	-52.08	40°09'50.967"N	104°46'12.711"W	0.60	
11408.00	89.440	179.890	7292.72	4110.78	-4110.49	-51.98	40°09'50.078"N	104°46'12.710"W	0.49	
11498.00	90.030	179.930	7293.13	4200.78	-4200.49	-51.84	40°09'49.189"N	104°46'12.708"W	0.66	
11588.00	90.920	179.850	7292.39	4290.77	-4290.49	-51.66	40°09'48.299"N	104°46'12.705"W	0.99	
11678.00	90.270	179.860	7291.45	4380.76	-4380.48	-51.44	40°09'47.410"N	104°46'12.703"W	0.72	
11768.00	89.290	180.690	7291.80	4470.75	-4470.48	-51.87	40°09'46.521"N	104°46'12.708"W	1.43	
11858.00	90.180	180.560	7292.22	4560.75	-4560.47	-52.85	40°09'45.631"N	104°46'12.721"W	1.00	
11948.00	89.260	181.700	7292.66	4650.74	-4650.45	-54.62	40°09'44.742"N	104°46'12.744"W	1.63	
12038.00	88.790	180.830	7294.19	4740.72	-4740.41	-56.61	40°09'43.853"N	104°46'12.769"W	1.10	
12128.00	89.720	180.360	7295.36	4830.71	-4830.40	-57.55	40°09'42.964"N	104°46'12.781"W	1.16	
12217.00	90.030	180.520	7295.55	4919.71	-4919.40	-58.23	40°09'42.084"N	104°46'12.790"W	0.39	
12307.00	90.300	180.490	7295.29	5009.71	-5009.39	-59.02	40°09'41.195"N	104°46'12.800"W	0.30	
12397.00	90.550	180.000	7294.62	5099.71	-5099.39	-59.41	40°09'40.306"N	104°46'12.805"W	0.61	
12487.00	90.730	180.070	7293.62	5189.70	-5189.38	-59.46	40°09'39.416"N	104°46'12.806"W	0.21	
12577.00	91.070	180.240	7292.21	5279.69	-5279.37	-59.71	40°09'38.527"N	104°46'12.809"W	0.42	
12667.00	89.840	180.420	7291.49	5369.68	-5369.36	-60.22	40°09'37.638"N	104°46'12.816"W	1.38	
12757.00	90.300	180.020	7291.38	5459.68	-5459.36	-60.57	40°09'36.748"N	104°46'12.820"W	0.68	
12814.00	90.460	179.770	7291.00	5516.68	-5516.36	-60.47	40°09'36.185"N	104°46'12.819"W	0.52	LAST BHI MWD+IFR SURVEY
12867.00	90.460	179.770	7290.58	5569.67	-5569.36	-60.25	40°09'35.661"N	104°46'12.816"W	0.00	PROJECTION TO BIT



Actual Wellpath Report

RATTLER 13N-3HZ AWP

Page 5 of 6



REFERENCE WELLPATH IDENTIFICATION

Operator	KERR-MCGEE OIL & GAS ONSHORE LP	Slot	SLOT#31 RATTLER 13N-3HZ (311'FSL & 761'FWL, SEC.34)
Area	COLORADO	Well	RATTLER 13N-3HZ
Field	WELD COUNTY (KERR MCGEE)	Wellbore	RATTLER 13N-3HZ AWB
Facility	SEC.34-T3N-R66W		

HOLE & CASING SECTIONS - Ref Wellbore: RATTLER 13N-3HZ AWB Ref Wellpath: RATTLER 13N-3HZ AWP

String/Diameter	Start MD [ft]	End MD [ft]	Interval [ft]	Start TVD [ft]	End TVD [ft]	Start N/S [ft]	Start E/W [ft]	End N/S [ft]	End E/W [ft]
13.5in Open Hole	13.00	817.00	804.00	13.00	816.93	0.00	0.00	7.13	1.98
9.625in Casing Surface	13.00	813.00	800.00	13.00	812.94	0.00	0.00	7.07	1.91
8.75in Open Hole	817.00	7658.00	6841.00	816.93	7304.85	7.13	1.98	-361.51	-36.77
7in Casing Intermediate	13.00	7648.00	7635.00	13.00	7304.75	0.00	0.00	-351.53	-36.30
6.125in Open Hole	7658.00	12867.00	5209.00	7304.85	7290.58	-361.51	-36.77	-5569.36	-60.25

TARGETS

Name	MD [ft]	TVD [ft]	North [ft]	East [ft]	Grid East [US ft]	Grid North [US ft]	Latitude	Longitude	Shape
CANNON RED W 3-12 (150' RADIUS)		-3.00	-3598.58	-309.74	3203701.24	1303904.79	40°09'55.137"N	104°46'16.030"W	circle
SEC.03-T2N-R66W HARD LINES (460' SET BACKS)	4983.00	66.73	1444.73	3205425.40	1307584.26	40°10'31.357"N	104°45'53.428"W	polygon	
SEC.03-T2N-R66W SECTION LINES	4983.00	66.73	1444.73	3205425.40	1307584.26	40°10'31.357"N	104°45'53.428"W	polygon	
SEC.34-T3N-R66W HARD LINES (460' SET BACKS)	4983.00	66.73	1444.73	3205425.40	1307584.26	40°10'31.357"N	104°45'53.428"W	polygon	
SEC.34-T3N-R66W SECTION LINES	4983.00	66.73	1444.73	3205425.40	1307584.26	40°10'31.357"N	104°45'53.428"W	polygon	
RATTLER 13N-3HZ BHL ON PLAT REV-2 (01'FSL & 730'FWL, SEC.03)	7283.00	-5594.80	-74.07	3203953.32	1301910.67	40°09'35.410"N	104°46'12.994"W	point	
RATTLER 13N-3HZ BHL ON PLAT REV-1 (01'FSL & 730'FWL, SEC.03)	7296.00	-5594.84	-74.04	3203953.35	1301910.63	40°09'35.410"N	104°46'12.994"W	point	
RATTLER 13N-3HZ LAND BOX	7297.00	0.00	0.00	3203981.33	1307505.64	40°10'30.698"N	104°46'12.040"W	polygon	

WELLPATH COMPOSITION - Ref Wellbore: RATTLER 13N-3HZ AWB Ref Wellpath: RATTLER 13N-3HZ AWP

Start MD [ft]	End MD [ft]	Positional Uncertainty Model	Log Name/Comment	Wellbore
13.00	738.00	Generic gyro - continuous (Standard)	MS GYRODATA SURVEYS <116-741>	RATTLER 13N-3HZ AWB
738.00	7604.00	NaviTrak (IFR)	BHI NAVITRAK MWD+IFR 8.75" HOLE <899-7604>	RATTLER 13N-3HZ AWB
7604.00	12814.00	NaviTrak (IFR)	BHI NAVITRAK MWD+IFR 6 1/8" HOLE <7719-12814>	RATTLER 13N-3HZ AWB
12814.00	12867.00	Blind Drilling (std)	Projection to bit	RATTLER 13N-3HZ AWB



Actual Wellpath Report

RATTLER 13N-3HZ AWP

Page 6 of 6



REFERENCE WELLPATH IDENTIFICATION

Operator	KERR-MCGEE OIL & GAS ONSHORE LP	Slot	SLOT#31 RATTLER 13N-3HZ (311'FSL & 761'FWL, SEC.34)
Area	COLORADO	Well	RATTLER 13N-3HZ
Field	WELD COUNTY (KERR MCGEE)	Wellbore	RATTLER 13N-3HZ AWP
Facility	SEC.34-T3N-R66W		

WELLPATH COMMENTS

MD [ft]	Inclination [°]	Azimuth [°]	TVD [ft]	Comment
13.00	0.000	320.710	13.00	TIE-ON
113.00	0.110	320.710	113.00	BEGIN GYRO SURVEYS
738.00	1.570	39.610	737.96	TIE ONTO GYRO SURVEYS
899.00	1.140	57.850	898.91	BEGIN BHI MWD+IFR SURVEYS
7648.00	89.437	182.719	7304.75	7" CASING POINT
12814.00	90.460	179.770	7291.00	LAST BHI MWD+IFR SURVEY
12867.00	90.460	179.770	7290.58	PROJECTION TO BIT