

T10N, R58W, 6th P.M.

WHITING OIL & GAS CORP.

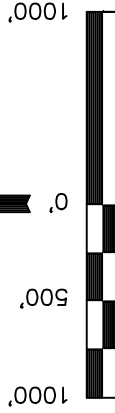
Well location, RAZOR #11E-1403A (SURFACE LOCATION), located as shown in the SW 1/4 NW 1/4 of Section 11, T10N, R58W, 6th P.M., Weld County, Colorado.

BASIS OF ELEVATION

SPOT ELEVATION LOCATED AT THE NORTHEAST CORNER OF SECTION 15, T9N, R58W, 6th P.M. TAKEN FROM THE GATEHOOK SPRING, QUADRANGLE, COLORADO, WELD COUNTY, 7.5 MINUTE QUAD (TOPOGRAPHIC MAP) PUBLISHED BY THE UNITED STATES DEPARTMENT OF THE INTERIOR, GEOLOGICAL SURVEY. SAID ELEVATION IS MARKED AS BEING 4679 FEET.

BASIS OF BEARINGS

BASIS OF BEARINGS IS A G.P.S. OBSERVATION.



SCALE

CERTIFICATION

THIS IS TO CERTIFY THAT THE ABOVE PLAT WAS PREPARED FROM FIELD NOTES OF ACTUAL SURVEY MADE BY ME OR UNDER MY SUPERVISION AND THAT THE SAME IS TRUE AND CORRECT TO THE BEST OF MY KNOWLEDGE AND BELIEF.

REGISTERED LAND SURVEYOR  
REGISTRATION NO. 28285  
STATE OF COLORADO  
EXPIRATION DATE 12-13

REVISED: 07-03-13

UINTAH ENGINEERING & LAND SURVEYING  
85 SOUTH 200 EAST - VERNAL, UTAH 84078  
(435) 789-1017

SCALE  
1" = 1000'

DATE SURVEYED:  
05-14-13

DATE DRAWN:  
05-17-13

PARTY

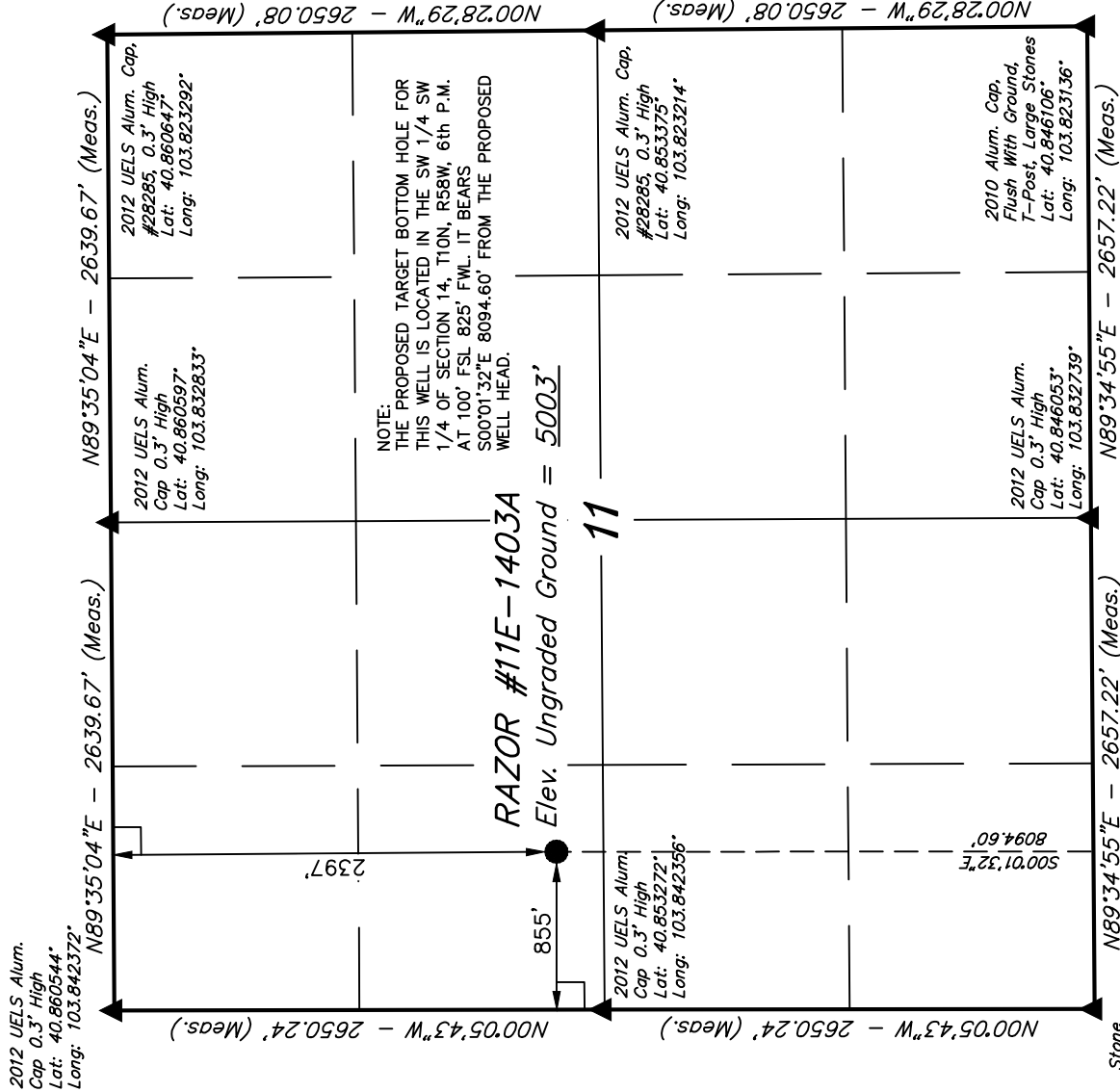
REFERENCES

D.N. G.W. B.D.H.  
G.L.O. PLAT

WEATHER

FILE

WHITING OIL & GAS CORP.



LEGEND:

90° SYMBOL

PROPOSED WELL HEAD.

SECTION CORNERS LOCATED.

PDOP = 1.9

NAD 83 (SURFACE LOCATION)	
LATITUDE = 40°51'14.34"	(40.853983)
LONGITUDE = 103°50'21.37"	(103.839269)
NAD 27 (SURFACE LOCATION)	
LATITUDE = 40°51'14.40"	(40.854000)
LONGITUDE = 103°50'19.56"	(103.838767)

T10N, R58W, 6th P.M.

WHITING OIL & GAS CORP.

Surface Location

Stone  
Lat: 40.846000°  
Long: 103.842342°

N89°34'55"E - 2657.22' (Meas.)

N89°34'55"E - 2657.22' (Meas.)

2012 UELS Alum.  
Cap 0.3' High  
Lat: 40.846053°  
Long: 103.832739°

2010 Alum. Cap,  
Flush With Ground,  
T-Post, Large Stones  
Lat: 40.846106°  
Long: 103.823736°

2012 UELS Alum.  
Cap, 0.3' High  
Lat: 40.838750°  
Long: 103.842289°

NOTE:  
THE PROPOSED TARGET BOTTOM HOLE  
BEARS S00°01'32"E 8094.60' FROM THE  
PROPOSED WELL HEAD WHICH IS LOCATED IN  
THE SW 1/4 NW 1/4 OF SECTION 11, T10N,  
R58W, 6th P.M. AT 2397' FNL 855' FWL.

14

N00°19'00"W - 2642.29' (Meas.)

N00°29'09"W - 2602.93' (Meas.)

RAZOR #11E-1403A

Target Bottom Hole

2012 UELS Alum.  
Cap, 0.5' Below  
Ground  
Lat: 40.831497°  
Long: 103.842233°

N89°59'11"W  
666.23' (Meas.)  
2012 UELS Alum.  
Cap, 0.5' High,  
Buried Stone  
Lat: 40.831497°  
Long: 103.832603°

N89°35'31"E - 2663.79' (Meas.)

Set Stone  
Lat: 40.831547°  
Long: 103.822978°

LEGEND:

└─ = 90° SYMBOL

● = PROPOSED WELL HEAD.

▲ = SECTION CORNERS LOCATED.

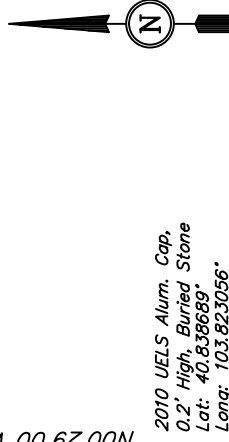
Well location, RAZOR #11E-1403A (TARGET  
BOTTOM HOLE), located as shown in the SW 1/4  
SW 1/4 of Section 14, T10N, R58W, 6th P.M.,  
Weld County, Colorado.

BASIS OF ELEVATION

SPOT ELEVATION LOCATED AT THE NORTHEAST CORNER OF  
SECTION 15, T9N, R58W, 6th P.M. TAKEN FROM THE  
GATEHOOK SPRING, QUADRANGLE, COLORADO, WELD COUNTY,  
7.5 MINUTE QUAD (TOPOGRAPHIC MAP) PUBLISHED BY THE  
UNITED STATES DEPARTMENT OF THE INTERIOR, GEOLOGICAL  
SURVEY. SAID ELEVATION IS MARKED AS BEING 4679 FEET.

BASIS OF BEARINGS

BASIS OF BEARINGS IS A G.P.S. OBSERVATION.



2010 UELS Alum. Cap,  
0.2' High, Buried Stone  
Lat: 40.838689°  
Long: 103.823056°

SCALE

CERTIFICATE OF REGISTRATION  
THIS IS TO CERTIFY THAT THE ABOVE PLAT WAS PREPARED FROM  
FIELD NOTES OF ACTUAL SURVEYS MADE BY ME OR UNDER MY  
SUPERVISION AND THAT THE SAME ARE TRUE AND CORRECT TO THE  
BEST OF MY KNOWLEDGE AND BELIEF.  
REGISTERED LAND SURVEYOR  
REGISTRATION NO. 28285  
STATE OF COLORADO  
RECEIVED  
JAN 14 2013  
COUNTY OF WELD  
RECEIVED  
JAN 14 2013  
COUNTY OF WELD

REVISED: 07-03-13

UINTAH ENGINEERING & LAND SURVEYING  
85 SOUTH 200 EAST - VERNAL, UTAH 84078  
(435) 789-1017

SCALE 1" = 1000'	DATE SURVEYED: 05-14-13	DATE DRAWN: 05-17-13
PARTY D.N. G.W. B.D.H.	REFERENCES G.L.O. PLAT	
WEATHER WARM	FILE	WHITING OIL & GAS CORP.

NAD 83 (TARGET BOTTOM HOLE)
LATITUDE = 40°49'54.38" (40.831772)
LONGITUDE = 103°50'21.32" (103.839256)
NAD 27 (TARGET BOTTOM HOLE)
LATITUDE = 40°49'54.43" (40.831786)
LONGITUDE = 103°50'19.52" (103.838756)