

**5D Plan Report****ANADARKO**

Field Name: *WATTENBURG_NAD83*
Site Name: *GEE 16N-25HZ PAD*
Well Name: *GEE 26C-12HZ*
Plan: *PLAN 1*





Plan Data for GEE 26C-12HZ

Field: WATTENBURG_NAD83

Map Unit: USft Vertical Reference Datum (VRD): Mean Sea Level
Projected Coordinate System: NAD83 / Colorado North (ftUS)

Site: GEE 16N-25HZ PAD

Unit: USfeet TVD Reference:

Company Name: ANADARKO

Position: Northing: 1290305.10USft Latitude: 40.128353°

Easting: 3186621.41USft Longitude: -104.832598°

North Reference: True Grid Convergence: 0.43°

Elevation Above VRD: 4858.00USft

Slot: GEE 26C-12HZ

Position:

Offset is from Site centre

+N/-S: 57.92USft Northing: 1290363.14USft Latitude: 40.128512°

+E/-W: 15.66USft Easting: 3186636.63USft Longitude: -104.832542°

Elevation Above VRD: 4858.00USft

Well: GEE 26C-12HZ

Type: Main-Well

File Number:

Vertical Section: Position offset of origin from Slot centre:

+N/-S: -57.92USft Azimuth: 360.32°

+E/-W: -15.66USft

Magnetic Parameters:

Model: Field Strength: Declination: Dip: Date:

BGGM 52735(nT) 8.63° 66.74° 2013-07-08

Plan Point Information:

DogLeg Severity Unit: °/100.00ft

Position offsets from Slot centre

MD	Inc	Az	TVD	+N/-S	+E/-W	VSec	DLS	Toolface	Build	Turn
(USft)	(°)	(°)	(USft)	(USft)	(USft)	(USft)	(DLSU)	(°)	(DLSU)	(DLSU)
0.00	0.00	0.00	0.00	0.00	0.00	0.00	0.00	0.0	0.00	0.00
2300.00	0.00	0.00	2300.00	0.00	0.00	0.00	0.00	0.0	0.00	0.00
2714.75	8.30	57.26	2713.31	16.21	25.21	16.35	2.00	57.3	2.00	0.00
6452.28	8.30	57.26	6411.73	307.79	478.79	310.46	0.00	0.0	0.00	0.00
6867.04	0.00	0.00	6825.04	324.00	504.00	326.81	2.00	180.0	-2.00	0.00
7767.50	90.05	0.32	7398.00	897.41	507.25	900.23	10.00	0.3	10.00	0.00
17650.40	90.05	0.32	7390.00	10780.15	563.19	10783.12	0.00	0.0	0.00	0.00

Target Set Information:

Name: GEE 26C

Name	TVD	Lat	Long
(USft)	(°)	(°)	(°)
HEEL 7398.00	40.131964	-104.830727	
PBHL 7390.00	40.158105	-104.830527	

Formation Point Information:

Name	TVD	Elevation	MD
(USft)	(USft)	(USft)	(USft)
SHARON SPRINGS	7056.00	-2181.00	7104.76
NIOBRARA A	7124.00	-2249.00	7181.56
NIOBRARA B	7158.00	-2283.00	7222.33
NIOBRARA C	7243.00	-2368.00	7335.46
FORT HAYS	7371.00	-2496.00	7590.45
CODELL	7393.00	-2518.00	7691.30

Casing Point Information:

Name	MD	TVD
(USft)	(USft)	(USft)
9 5/8 in	968.00	968.00
7 in	7767.50	7398.00

True Grid

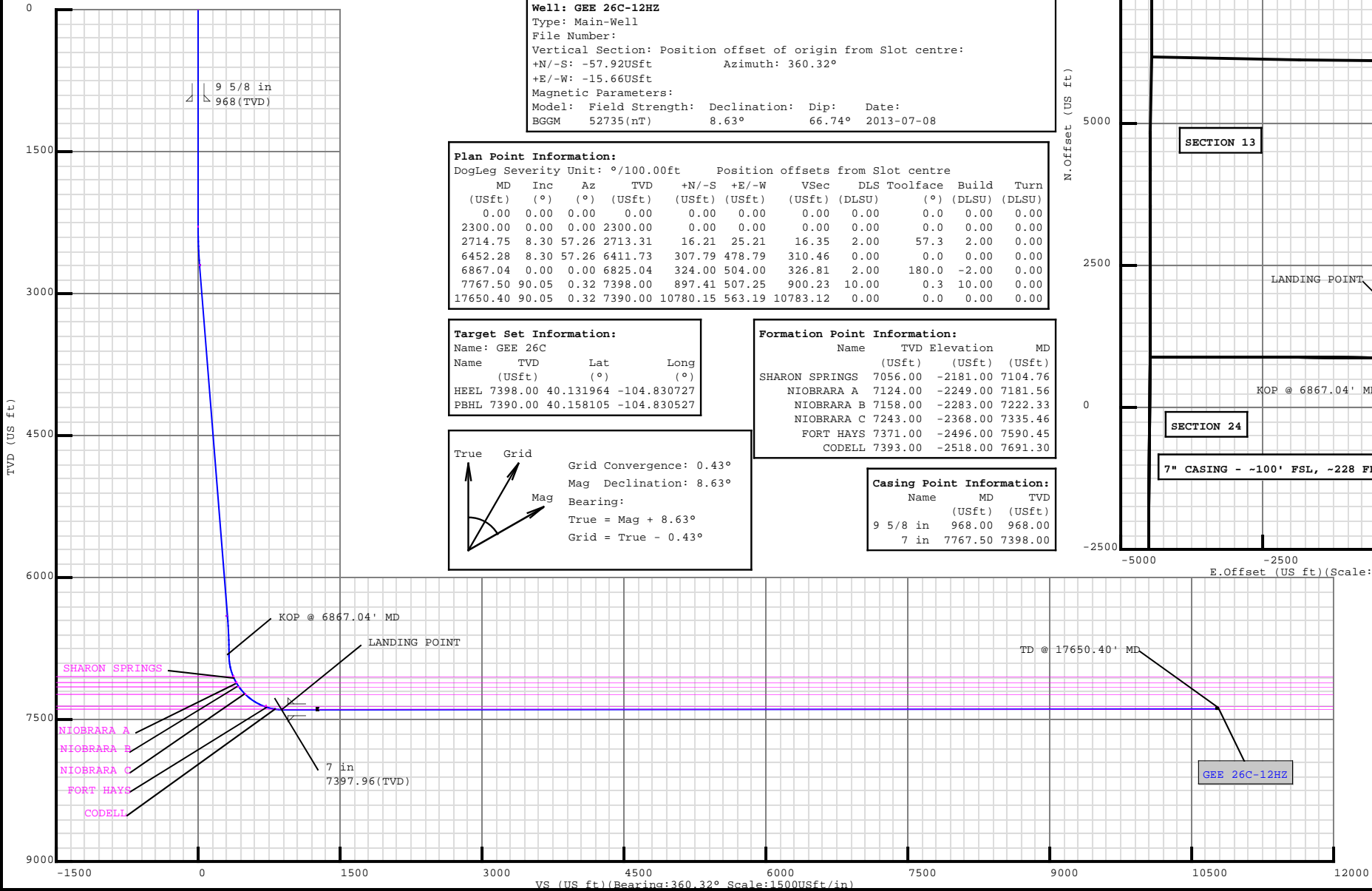
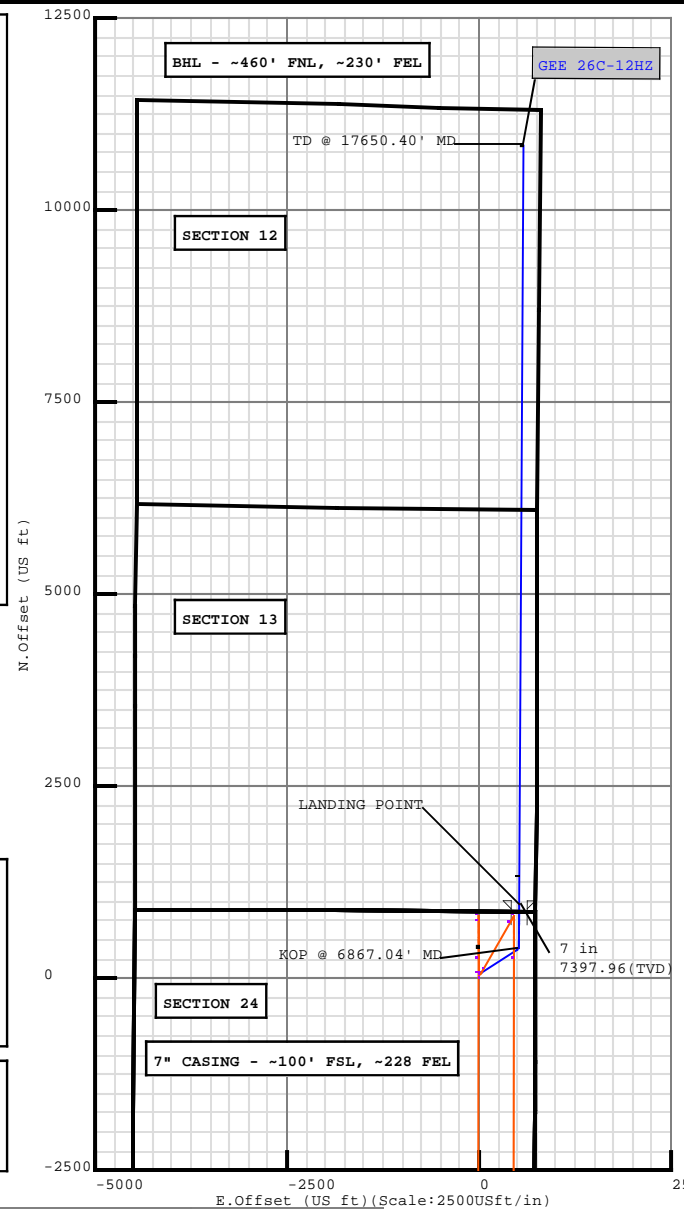
Grid Convergence: 0.43°

Mag Declination: 8.63°

Bearing:

True = Mag + 8.63°

Grid = True - 0.43°



Plan Surveys for the GEE 26C-12HZ

Site Name GEE 16N-25HZ PAD	Units : US ft	North Reference : True	Convergence Angle : 0.43
	Position	Northing : 1290305.10 US ft	Latitude : 40.128353
		Easting : 3186621.41 US ft	Longitude : -104.832598
	Elevation above: 4858.00 US ft Comment :		
Slot Name GEE 26C-12HZ	Position (Offsets relative to Site Centre)		
	+N / -S : 57.92 US ft	Northing : 1290363.14 US ft	Latitude : 40.128512
	+E / -W : 15.66 US ft	Easting : 3186636.63 US ft	Longitude : -104.832542
	Slot TVD Reference : Ground Elevation Elevation above : 4858.00 US ft Comment :		
Well Name GEE 26C-12HZ	Type : Main well	UWI :	Plan : PLAN 1
	Rig Height <i>Drill Floor</i> : 17.00 US ft	Comment :	
	Relative to : 4875.00 US ft		
	Closure Distance : 10794.8 US ft	Closure Azimuth : 2.99062°	
	Vertical Section (Position of Origin Relative to Slot)		
	+N / -S : -57.92 US ft	+E / -W : -15.66 US ft	Az : 0.32°
	Magnetic Parameters		
	Model : BGGM	Field Strength : 52735.6nT	Dec : 8.63°
			Dip : 66.74°
			Date : 08/Jul/2013

Target Set				
Name : GEE 26C		Number of Targets : 2		
Comment :				
TargetName:	Position (Relative to centre)			
HEEL	+N / -S : 1257.50US ft		Northing : 1291624.42 US ft	
Shape:	+E / -W : 507.49 US ft		Latitude : 40°7'55.070400"	
Cuboid	TVD (Drill Floor) : 7398.00 US ft		Longitude : -104°49'50.617200"	
	Orientation	Azimuth : 0.00°	Inclination : 0.00°	
	Dimensions	Length : 20.00 US ft	Breadth : 20.00 US ft	Height : 20.00 US ft
TargetName:	Position (Relative to centre)			
PBHL	+N / -S : 10780.15US ft		Northing : 1301147.22 US ft	
Shape:	+E / -W : 563.19 US ft		Latitude : 40°9'29.178000"	
Cuboid	TVD (Drill Floor) : 7390.00 US ft		Longitude : -104°49'49.897200"	
	Orientation	Azimuth : 0.00°	Inclination : 0.00°	
	Dimensions	Length : 20.00 US ft	Breadth : 20.00 US ft	Height : 20.00 US ft

Casing Points (Relative to centre, TVD relative to Drill Floor)								
Name	MD (US ft)	Inc (°)	Az (°)	TVD (US ft)	N.Offset (US ft)	E.Offset (US ft)	Latitude (°)	Longitude (°)
9 5/8 in	968.00	0.00	0.00	968.00	0.00	0.00	40.128512	-104.832542
7 in	7816.94	90.05	0.32	7397.96	946.85	507.53	40.131111	-104.830727

Well path created using minimum curvature

Salient Points (Relative to centre, TVD relative to Drill Floor)									
MD (US ft)	Inc (°)	Az (°)	TVD (US ft)	N.Offset (US ft)	E.Offset (US ft)	DLS (°/100 US ft)	T.Face (°)	VS (US ft)	Comment
0.00	0.00	0.00	0.00	0.00	0.00	0.00	0.00	58.01	
968.00	0.00	0.00	968.00	0.00	0.00	0.00	0.00	58.01	9 5/8 in
2300.00	0.00	0.00	2300.00	0.00	0.00	0.00	0.00	58.01	
2714.75	8.30	57.26	2713.31	16.21	25.21	2.00	57.26	74.35	
6452.28	8.30	57.26	6411.73	307.79	478.79	0.00	0.00	368.47	

5D Plan Report

Salient Points (Relative to centre, TVD relative to Drill Floor)									
MD (US ft)	Inc (°)	Az (°)	TVD (US ft)	N.Offset (US ft)	E.Offset (US ft)	DLS (°/100 US ft)	T.Face (°)	VS (US ft)	Comment
6867.04	0.00	0.00	6825.04	324.00	504.00	2.00	180.00	384.82	KOP @ 6867.04' MD
7104.76	23.77	0.32	7056.00	372.61	504.28	10.00	0.32	433.43	SHARON SPRINGS :
7181.56	31.45	0.32	7124.00	408.18	504.48	10.00	0.00	469.00	NIOBRARA A :
7222.33	35.53	0.32	7158.00	430.67	504.60	10.00	0.00	491.49	NIOBRARA B :
7335.46	46.84	0.32	7243.00	505.05	505.02	10.00	0.00	565.87	NIOBRARA C :
7590.45	72.34	0.32	7371.00	723.15	506.26	10.00	0.00	783.97	FORT HAYS :
7691.30	82.43	0.32	7393.00	821.44	506.82	10.00	0.00	882.26	CODELL :
7767.50	90.05	0.32	7398.00	897.41	507.25	10.00	0.00	958.24	LANDING POINT
7816.94	90.05	0.32	7397.96	946.85	507.53	0.00	0.00	1007.68	7 in
17650.40	90.05	0.32	7390.00	10780.15	563.19	0.00	0.00	10841.13	TD @ 17650.40' MD

Interpolated Points (Relative to centre, TVD relative to Drill Floor)									
MD (US ft)	Inc (°)	Az (°)	TVD (US ft)	N.Offset (US ft)	E.Offset (US ft)	DLS (°/100 US ft)	T.Face (°)	VS (US ft)	Comment
0.00	0.00	0.00	0.00	0.00	0.00	0.00	0.00	58.01	
100.00	0.00	0.00	100.00	0.00	0.00	0.00	0.00	58.01	
200.00	0.00	0.00	200.00	0.00	0.00	0.00	0.00	58.01	
300.00	0.00	0.00	300.00	0.00	0.00	0.00	0.00	58.01	
400.00	0.00	0.00	400.00	0.00	0.00	0.00	0.00	58.01	
500.00	0.00	0.00	500.00	0.00	0.00	0.00	0.00	58.01	
600.00	0.00	0.00	600.00	0.00	0.00	0.00	0.00	58.01	
700.00	0.00	0.00	700.00	0.00	0.00	0.00	0.00	58.01	
800.00	0.00	0.00	800.00	0.00	0.00	0.00	0.00	58.01	
900.00	0.00	0.00	900.00	0.00	0.00	0.00	0.00	58.01	
968.00	0.00	0.00	968.00	0.00	0.00	0.00	0.00	58.01	9 5/8 in
1000.00	0.00	0.00	1000.00	0.00	0.00	0.00	0.00	58.01	
1100.00	0.00	0.00	1100.00	0.00	0.00	0.00	0.00	58.01	
1200.00	0.00	0.00	1200.00	0.00	0.00	0.00	0.00	58.01	
1300.00	0.00	0.00	1300.00	0.00	0.00	0.00	0.00	58.01	
1400.00	0.00	0.00	1400.00	0.00	0.00	0.00	0.00	58.01	
1500.00	0.00	0.00	1500.00	0.00	0.00	0.00	0.00	58.01	
1600.00	0.00	0.00	1600.00	0.00	0.00	0.00	0.00	58.01	
1700.00	0.00	0.00	1700.00	0.00	0.00	0.00	0.00	58.01	
1800.00	0.00	0.00	1800.00	0.00	0.00	0.00	0.00	58.01	
1900.00	0.00	0.00	1900.00	0.00	0.00	0.00	0.00	58.01	
2000.00	0.00	0.00	2000.00	0.00	0.00	0.00	0.00	58.01	
2100.00	0.00	0.00	2100.00	0.00	0.00	0.00	0.00	58.01	
2200.00	0.00	0.00	2200.00	0.00	0.00	0.00	0.00	58.01	
2300.00	0.00	0.00	2300.00	0.00	0.00	0.00	0.00	58.01	
2400.00	2.00	57.26	2399.98	0.94	1.47	2.00	57.26	58.96	
2500.00	4.00	57.26	2499.84	3.77	5.87	2.00	0.00	61.81	
2600.00	6.00	57.26	2599.45	8.49	13.20	2.00	0.00	66.57	

5D Plan Report

Interpolated Points (Relative to centre, TVD relative to Drill Floor)									
MD (US ft)	Inc (°)	Az (°)	TVD (US ft)	N.Offset (US ft)	E.Offset (US ft)	DLS (°/100 US ft)	T.Face (°)	VS (US ft)	Comment
2700.00	8.00	57.26	2698.70	15.08	23.45	2.00	0.00	73.21	
2714.75	8.30	57.26	2713.31	16.21	25.21	2.00	0.00	74.35	
2800.00	8.30	57.26	2797.66	22.86	35.56	0.00	0.00	81.06	
2900.00	8.30	57.26	2896.61	30.66	47.69	0.00	0.00	88.93	
3000.00	8.30	57.26	2995.57	38.46	59.83	0.00	0.00	96.80	
3100.00	8.30	57.26	3094.52	46.26	71.96	0.00	0.00	104.67	
3200.00	8.30	57.26	3193.48	54.06	84.10	0.00	0.00	112.54	
3300.00	8.30	57.26	3292.43	61.87	96.24	0.00	0.00	120.41	
3400.00	8.30	57.26	3391.38	69.67	108.37	0.00	0.00	128.28	
3500.00	8.30	57.26	3490.34	77.47	120.51	0.00	0.00	136.15	
3600.00	8.30	57.26	3589.29	85.27	132.64	0.00	0.00	144.02	
3700.00	8.30	57.26	3688.25	93.07	144.78	0.00	0.00	151.89	
3800.00	8.30	57.26	3787.20	100.87	156.91	0.00	0.00	159.75	
3900.00	8.30	57.26	3886.15	108.67	169.05	0.00	0.00	167.62	
4000.00	8.30	57.26	3985.11	116.48	181.19	0.00	0.00	175.49	
4100.00	8.30	57.26	4084.06	124.28	193.32	0.00	0.00	183.36	
4200.00	8.30	57.26	4183.01	132.08	205.46	0.00	0.00	191.23	
4300.00	8.30	57.26	4281.97	139.88	217.59	0.00	0.00	199.10	
4400.00	8.30	57.26	4380.92	147.68	229.73	0.00	0.00	206.97	
4500.00	8.30	57.26	4479.88	155.48	241.86	0.00	0.00	214.84	
4600.00	8.30	57.26	4578.83	163.29	254.00	0.00	0.00	222.71	
4700.00	8.30	57.26	4677.78	171.09	266.14	0.00	0.00	230.58	
4800.00	8.30	57.26	4776.74	178.89	278.27	0.00	0.00	238.45	
4900.00	8.30	57.26	4875.69	186.69	290.41	0.00	0.00	246.32	
5000.00	8.30	57.26	4974.64	194.49	302.54	0.00	0.00	254.19	
5100.00	8.30	57.26	5073.60	202.29	314.68	0.00	0.00	262.05	
5200.00	8.30	57.26	5172.55	210.10	326.81	0.00	0.00	269.92	
5300.00	8.30	57.26	5271.51	217.90	338.95	0.00	0.00	277.79	
5400.00	8.30	57.26	5370.46	225.70	351.09	0.00	0.00	285.66	
5500.00	8.30	57.26	5469.41	233.50	363.22	0.00	0.00	293.53	
5600.00	8.30	57.26	5568.37	241.30	375.36	0.00	0.00	301.40	
5700.00	8.30	57.26	5667.32	249.10	387.49	0.00	0.00	309.27	
5800.00	8.30	57.26	5766.28	256.90	399.63	0.00	0.00	317.14	
5900.00	8.30	57.26	5865.23	264.71	411.77	0.00	0.00	325.01	
6000.00	8.30	57.26	5964.18	272.51	423.90	0.00	0.00	332.88	
6100.00	8.30	57.26	6063.14	280.31	436.04	0.00	0.00	340.75	
6200.00	8.30	57.26	6162.09	288.11	448.17	0.00	0.00	348.62	
6300.00	8.30	57.26	6261.04	295.91	460.31	0.00	0.00	356.49	
6400.00	8.30	57.26	6360.00	303.71	472.44	0.00	0.00	364.35	
6452.28	8.30	57.26	6411.73	307.79	478.79	0.00	0.00	368.47	
6500.00	7.34	57.26	6459.01	311.30	484.25	2.00	180.00	372.01	

5D Plan Report

Interpolated Points (Relative to centre, TVD relative to Drill Floor)									
MD (US ft)	Inc (°)	Az (°)	TVD (US ft)	N.Offset (US ft)	E.Offset (US ft)	DLS (°/100 US ft)	T.Face (°)	VS (US ft)	Comment
6600.00	5.34	57.26	6558.39	317.27	493.54	2.00	180.00	378.03	
6700.00	3.34	57.26	6658.10	321.37	499.90	2.00	180.00	382.16	
6800.00	1.34	57.26	6758.01	323.58	503.34	2.00	180.00	384.39	
6867.04	0.00	0.00	6825.04	324.00	504.00	2.00	180.00	384.82	KOP @ 6867.04' MD
6900.00	3.30	0.32	6857.99	324.95	504.01	10.00	0.32	385.76	
7000.00	13.30	0.32	6956.81	339.36	504.09	10.00	0.00	400.18	
7100.00	23.30	0.32	7051.64	370.71	504.26	10.00	0.00	431.53	
7104.76	23.77	0.32	7056.00	372.61	504.28	10.00	0.00	433.43	SHARON SPRINGS :
7181.56	31.45	0.32	7124.00	408.18	504.48	10.00	0.00	469.00	NIOBRARA A :
7200.00	33.30	0.32	7139.58	418.05	504.53	10.00	0.00	478.87	
7222.33	35.53	0.32	7158.00	430.67	504.60	10.00	0.00	491.49	NIOBRARA B :
7300.00	43.30	0.32	7217.96	479.95	504.88	10.00	0.00	540.77	
7335.46	46.84	0.32	7243.00	505.05	505.02	10.00	0.00	565.87	NIOBRARA C :
7400.00	53.30	0.32	7284.40	554.51	505.30	10.00	0.00	615.33	
7500.00	63.30	0.32	7336.89	639.48	505.79	10.00	0.00	700.30	
7590.45	72.34	0.32	7371.00	723.15	506.26	10.00	0.00	783.97	FORT HAYS :
7600.00	73.30	0.32	7373.82	732.27	506.31	10.00	0.00	793.09	
7691.30	82.43	0.32	7393.00	821.44	506.82	10.00	0.00	882.26	CODELL :
7700.00	83.30	0.32	7394.08	830.07	506.86	10.00	0.00	890.89	
7767.50	90.05	0.32	7398.00	897.41	507.25	10.00	0.00	958.24	LANDING POINT
7800.00	90.05	0.32	7397.97	929.91	507.43	0.00	0.00	990.74	
7816.94	90.05	0.32	7397.96	946.85	507.53	0.00	0.00	1007.68	7 in
7900.00	90.05	0.32	7397.89	1029.91	508.00	0.00	0.00	1090.74	
8000.00	90.05	0.32	7397.81	1129.91	508.56	0.00	0.00	1190.74	
8100.00	90.05	0.32	7397.73	1229.91	509.13	0.00	0.00	1290.74	
8200.00	90.05	0.32	7397.65	1329.91	509.69	0.00	0.00	1390.74	
8300.00	90.05	0.32	7397.57	1429.90	510.26	0.00	0.00	1490.74	
8400.00	90.05	0.32	7397.49	1529.90	510.83	0.00	0.00	1590.74	
8500.00	90.05	0.32	7397.40	1629.90	511.39	0.00	0.00	1690.74	
8600.00	90.05	0.32	7397.32	1729.90	511.96	0.00	0.00	1790.74	
8700.00	90.05	0.32	7397.24	1829.90	512.53	0.00	0.00	1890.74	
8800.00	90.05	0.32	7397.16	1929.90	513.09	0.00	0.00	1990.74	
8900.00	90.05	0.32	7397.08	2029.89	513.66	0.00	0.00	2090.74	
9000.00	90.05	0.32	7397.00	2129.89	514.22	0.00	0.00	2190.74	
9100.00	90.05	0.32	7396.92	2229.89	514.79	0.00	0.00	2290.74	
9200.00	90.05	0.32	7396.84	2329.89	515.36	0.00	0.00	2390.74	
9300.00	90.05	0.32	7396.76	2429.89	515.92	0.00	0.00	2490.74	
9400.00	90.05	0.32	7396.68	2529.89	516.49	0.00	0.00	2590.74	
9500.00	90.05	0.32	7396.60	2629.88	517.05	0.00	0.00	2690.74	
9600.00	90.05	0.32	7396.51	2729.88	517.62	0.00	0.00	2790.74	
9700.00	90.05	0.32	7396.43	2829.88	518.19	0.00	0.00	2890.74	

5D Plan Report

Interpolated Points (Relative to centre, TVD relative to Drill Floor)										Comment
MD (US ft)	Inc (°)	Az (°)	TVD (US ft)	N.Offset (US ft)	E.Offset (US ft)	DLS (°/100 US ft)	T.Face (°)	VS (US ft)		
9800.00	90.05	0.32	7396.35	2929.88	518.75	0.00	0.00	2990.74		
9900.00	90.05	0.32	7396.27	3029.88	519.32	0.00	0.00	3090.74		
10000.00	90.05	0.32	7396.19	3129.88	519.88	0.00	0.00	3190.74		
10100.00	90.05	0.32	7396.11	3229.87	520.45	0.00	0.00	3290.74		
10200.00	90.05	0.32	7396.03	3329.87	521.02	0.00	0.00	3390.74		
10300.00	90.05	0.32	7395.95	3429.87	521.58	0.00	0.00	3490.74		
10400.00	90.05	0.32	7395.87	3529.87	522.15	0.00	0.00	3590.74		
10500.00	90.05	0.32	7395.79	3629.87	522.71	0.00	0.00	3690.74		
10600.00	90.05	0.32	7395.71	3729.87	523.28	0.00	0.00	3790.74		
10700.00	90.05	0.32	7395.62	3829.86	523.85	0.00	0.00	3890.74		
10800.00	90.05	0.32	7395.54	3929.86	524.41	0.00	0.00	3990.74		
10900.00	90.05	0.32	7395.46	4029.86	524.98	0.00	0.00	4090.74		
11000.00	90.05	0.32	7395.38	4129.86	525.55	0.00	0.00	4190.74		
11100.00	90.05	0.32	7395.30	4229.86	526.11	0.00	0.00	4290.74		
11200.00	90.05	0.32	7395.22	4329.86	526.68	0.00	0.00	4390.74		
11300.00	90.05	0.32	7395.14	4429.85	527.24	0.00	0.00	4490.74		
11400.00	90.05	0.32	7395.06	4529.85	527.81	0.00	0.00	4590.74		
11500.00	90.05	0.32	7394.98	4629.85	528.38	0.00	0.00	4690.74		
11600.00	90.05	0.32	7394.90	4729.85	528.94	0.00	0.00	4790.74		
11700.00	90.05	0.32	7394.82	4829.85	529.51	0.00	0.00	4890.74		
11800.00	90.05	0.32	7394.73	4929.85	530.07	0.00	0.00	4990.74		
11900.00	90.05	0.32	7394.65	5029.84	530.64	0.00	0.00	5090.74		
12000.00	90.05	0.32	7394.57	5129.84	531.21	0.00	0.00	5190.74		
12100.00	90.05	0.32	7394.49	5229.84	531.77	0.00	0.00	5290.74		
12200.00	90.05	0.32	7394.41	5329.84	532.34	0.00	0.00	5390.74		
12300.00	90.05	0.32	7394.33	5429.84	532.90	0.00	0.00	5490.74		
12400.00	90.05	0.32	7394.25	5529.84	533.47	0.00	0.00	5590.74		
12500.00	90.05	0.32	7394.17	5629.84	534.04	0.00	0.00	5690.74		
12600.00	90.05	0.32	7394.09	5729.83	534.60	0.00	0.00	5790.74		
12700.00	90.05	0.32	7394.01	5829.83	535.17	0.00	0.00	5890.74		
12800.00	90.05	0.32	7393.93	5929.83	535.74	0.00	0.00	5990.74		
12900.00	90.05	0.32	7393.84	6029.83	536.30	0.00	0.00	6090.74		
13000.00	90.05	0.32	7393.76	6129.83	536.87	0.00	0.00	6190.74		
13100.00	90.05	0.32	7393.68	6229.83	537.43	0.00	0.00	6290.74		
13200.00	90.05	0.32	7393.60	6329.82	538.00	0.00	0.00	6390.74		
13300.00	90.05	0.32	7393.52	6429.82	538.57	0.00	0.00	6490.74		
13400.00	90.05	0.32	7393.44	6529.82	539.13	0.00	0.00	6590.74		
13500.00	90.05	0.32	7393.36	6629.82	539.70	0.00	0.00	6690.74		
13600.00	90.05	0.32	7393.28	6729.82	540.26	0.00	0.00	6790.74		
13700.00	90.05	0.32	7393.20	6829.82	540.83	0.00	0.00	6890.74		
13800.00	90.05	0.32	7393.12	6929.81	541.40	0.00	0.00	6990.74		

5D Plan Report

Interpolated Points (Relative to centre, TVD relative to Drill Floor)									
MD (US ft)	Inc (°)	Az (°)	TVD (US ft)	N.Offset (US ft)	E.Offset (US ft)	DLS (°/100 US ft)	T.Face (°)	VS (US ft)	Comment
13900.00	90.05	0.32	7393.03	7029.81	541.96	0.00	0.00	7090.74	
14000.00	90.05	0.32	7392.95	7129.81	542.53	0.00	0.00	7190.74	
14100.00	90.05	0.32	7392.87	7229.81	543.09	0.00	0.00	7290.74	
14200.00	90.05	0.32	7392.79	7329.81	543.66	0.00	0.00	7390.74	
14300.00	90.05	0.32	7392.71	7429.81	544.23	0.00	0.00	7490.74	
14400.00	90.05	0.32	7392.63	7529.80	544.79	0.00	0.00	7590.74	
14500.00	90.05	0.32	7392.55	7629.80	545.36	0.00	0.00	7690.74	
14600.00	90.05	0.32	7392.47	7729.80	545.93	0.00	0.00	7790.74	
14700.00	90.05	0.32	7392.39	7829.80	546.49	0.00	0.00	7890.74	
14800.00	90.05	0.32	7392.31	7929.80	547.06	0.00	0.00	7990.74	
14900.00	90.05	0.32	7392.23	8029.80	547.62	0.00	0.00	8090.74	
15000.00	90.05	0.32	7392.14	8129.79	548.19	0.00	0.00	8190.74	
15100.00	90.05	0.32	7392.06	8229.79	548.76	0.00	0.00	8290.74	
15200.00	90.05	0.32	7391.98	8329.79	549.32	0.00	0.00	8390.74	
15300.00	90.05	0.32	7391.90	8429.79	549.89	0.00	0.00	8490.74	
15400.00	90.05	0.32	7391.82	8529.79	550.45	0.00	0.00	8590.74	
15500.00	90.05	0.32	7391.74	8629.79	551.02	0.00	0.00	8690.74	
15600.00	90.05	0.32	7391.66	8729.78	551.59	0.00	0.00	8790.74	
15700.00	90.05	0.32	7391.58	8829.78	552.15	0.00	0.00	8890.74	
15800.00	90.05	0.32	7391.50	8929.78	552.72	0.00	0.00	8990.74	
15900.00	90.05	0.32	7391.42	9029.78	553.28	0.00	0.00	9090.74	
16000.00	90.05	0.32	7391.34	9129.78	553.85	0.00	0.00	9190.74	
16100.00	90.05	0.32	7391.25	9229.78	554.42	0.00	0.00	9290.74	
16200.00	90.05	0.32	7391.17	9329.77	554.98	0.00	0.00	9390.74	
16300.00	90.05	0.32	7391.09	9429.77	555.55	0.00	0.00	9490.74	
16400.00	90.05	0.32	7391.01	9529.77	556.12	0.00	0.00	9590.74	
16500.00	90.05	0.32	7390.93	9629.77	556.68	0.00	0.00	9690.74	
16600.00	90.05	0.32	7390.85	9729.77	557.25	0.00	0.00	9790.74	
16700.00	90.05	0.32	7390.77	9829.77	557.81	0.00	0.00	9890.74	
16800.00	90.05	0.32	7390.69	9929.76	558.38	0.00	0.00	9990.74	
16900.00	90.05	0.32	7390.61	10029.76	558.95	0.00	0.00	10090.74	
17000.00	90.05	0.32	7390.53	10129.76	559.51	0.00	0.00	10190.74	
17100.00	90.05	0.32	7390.45	10229.76	560.08	0.00	0.00	10290.74	
17200.00	90.05	0.32	7390.36	10329.76	560.64	0.00	0.00	10390.74	
17300.00	90.05	0.32	7390.28	10429.76	561.21	0.00	0.00	10490.74	
17400.00	90.05	0.32	7390.20	10529.75	561.78	0.00	0.00	10590.73	
17500.00	90.05	0.32	7390.12	10629.75	562.34	0.00	0.00	10690.73	
17600.00	90.05	0.32	7390.04	10729.75	562.91	0.00	0.00	10790.73	
17650.40	90.05	0.32	7390.00	10780.15	563.19	0.00	0.00	10841.13	TD @ 17650.40' MD

5D Plan Report

Formation Points	(Relative to centre, TVD relative to Drill Floor)		
Name	MD (US ft)	TVD (US ft)	
SHARON SPRINGS	7104.76	7056.00	
NIOBRARA A	7181.56	7124.00	
NIOBRARA B	7222.33	7158.00	
NIOBRARA C	7335.46	7243.00	
FORT HAYS	7590.45	7371.00	
CODELL	7691.30	7393.00	