



# Kerr-McGee Oil & Gas Onshore LP

A subsidiary of Anadarko Petroleum Corporation

1099 18<sup>th</sup> Street  
Denver, CO 80202  
720-929-6000

September 11, 2013

Department of Natural Resources  
Oil and Gas Conservation Commission  
The Chancery Building  
1120 Lincoln St., Suite 801  
Denver, CO 80203

Re: **30 Day Certification Letter - 318A-e**  
GEE 26C-25HZ  
Township 2 North, Range 67 West, Section 24: NE/4NE/4  
Unit Spacing: 2N-67W: SEC. 12:E/2E/2; SEC. 13:E/2E/2; SEC. 24:NE/4NE/4;  
2N-66W: SEC. 7: W/2W/2; SEC. 18: W/2W/2; SEC. 19: NW/4NW/4  
Weld County, Colorado

Ladies/Gentlemen:

Kerr-McGee Oil and Gas Onshore LP ("KMG") hereby certifies to the Director that a thirty (30) day notice has been given by certified mail to all owners in the proposed wellbore spacing unit. We have not received any objections to such well location, proposed spacing unit, or additional producing formation. KMG hereby requests the Director to approve the boundary well.

If you have any questions or issues regarding this permit, please contact Laura Abrams at (720) 929-6356.

Sincerely,

**Kerr-McGee Oil and Gas Onshore LP**

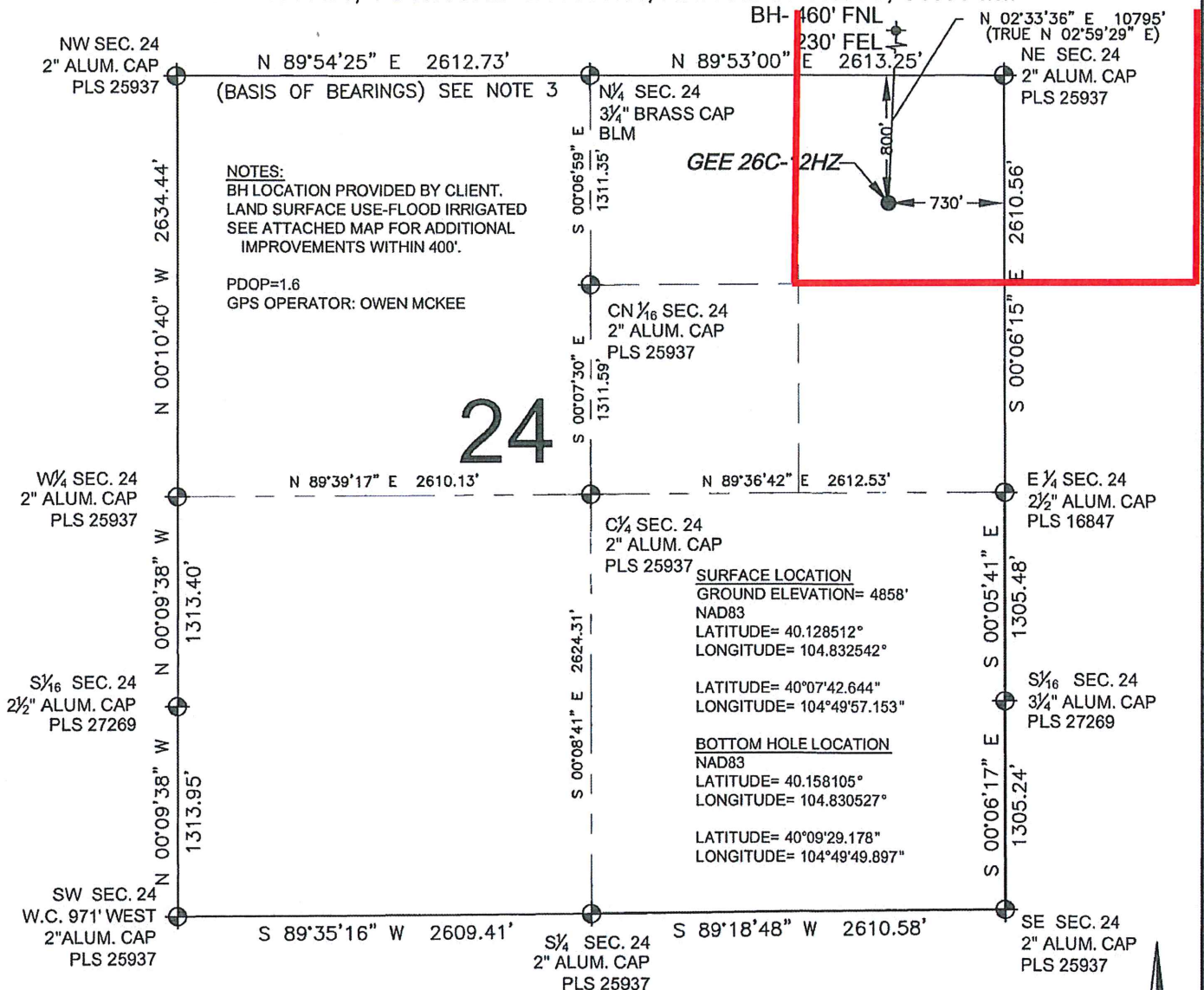
A blue ink signature of Laura Abrams, written in a cursive style.

**Laura Abrams**  
**Regulatory Analyst II**

Enclosure

**WELL LOCATION CERTIFICATE: GEE 26C-12HZ**

SECTION 24, TOWNSHIP 2 NORTH, RANGE 67 WEST, 6TH P.M.



SHEET 1 OF 3

PREPARED BY:

FIELD DATE:  
06-17-13DRAWING DATE:  
06-19-13BY:  
CLMREV:  
TJN

SURFACE LOCATION:

NE 1/4 NE 1/4,

SEC. 24, T2N, R67W, 6TH P.M.

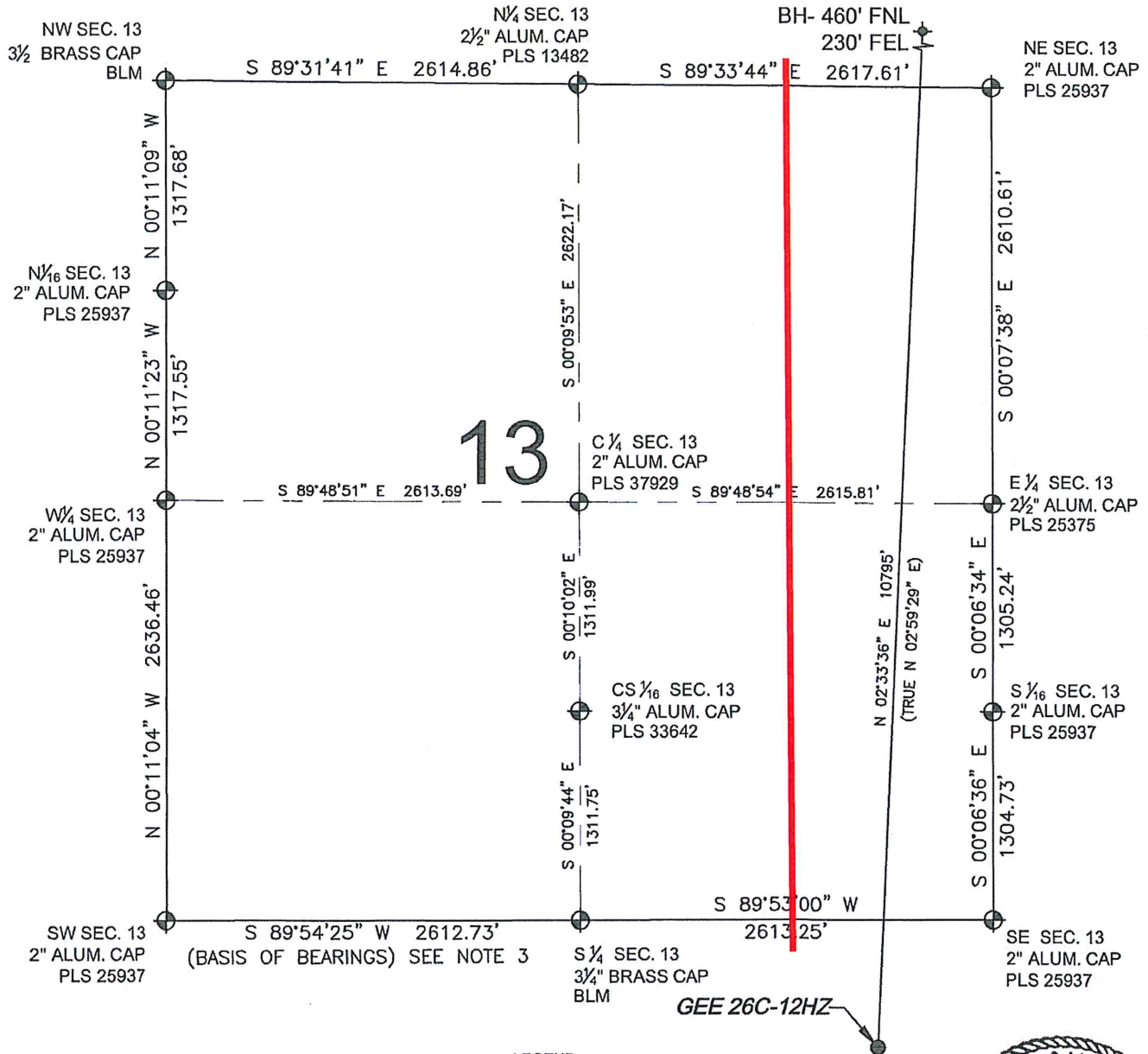
WELD COUNTY, COLORADO





**WELL LOCATION CERTIFICATE: GEE 26C-12HZ**

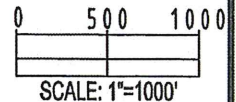
SECTION 13, TOWNSHIP 2 NORTH, RANGE 67 WEST, 6TH P.M.

**NOTES:**

1. THIS FIELD SURVEY CONFORMS TO THE MINIMUM STANDARDS SET BY THE C.O.G.C.C., RULE NO. 215
2. HORIZONTAL POSITIONS AND ORTHOMETRIC ELEVATIONS SHOWN AT THE WELL HEAD, ARE BASED ON GPS-RTK POSITIONS DERIVED FROM MINIMUM 2-HOUR STATIC OBSERVATIONS CORRECTED BY THE NATIONAL GEODETIC SURVEY ONLINE POSITIONING USER SERVICE, O.P.U.S. DATUM: HORIZONTAL = NAD83/2007, VERTICAL = NAVD88
3. THE BASIS OF BEARINGS ARE STATE PLANE COORDINATE SYSTEM GRID BEARINGS SHOWN HEREON BETWEEN THE DESCRIBED MONUMENTS SHOWN HEREON.
4. GRID DISTANCES ARE SHOWN, AS MEASURED IN THE FIELD, WITH TIES TO WELLS MEASURED PERPENDICULAR TO SECTION LINES.

**LEGEND**

- = EXISTING MONUMENT      ✦ = BOTTOM HOLE  
 ○ = PROPOSED WELL      ◆ = EXISTING WELL  
 BH = BOTTOM HOLE



BRADLEY L. LAMAN, PLS 38345  
 COLORADO LICENSED PROFESSIONAL LAND SURVEYOR  
 FOR AND ON BEHALF OF P.F.S., LLC

SHEET 2 OF 3

PREPARED BY:



FIELD DATE:

06-17-13

DRAWING DATE:

06-19-13

BY:

CLM

REV:

TJN

SURFACE LOCATION:

NE 1/4 NE 1/4,

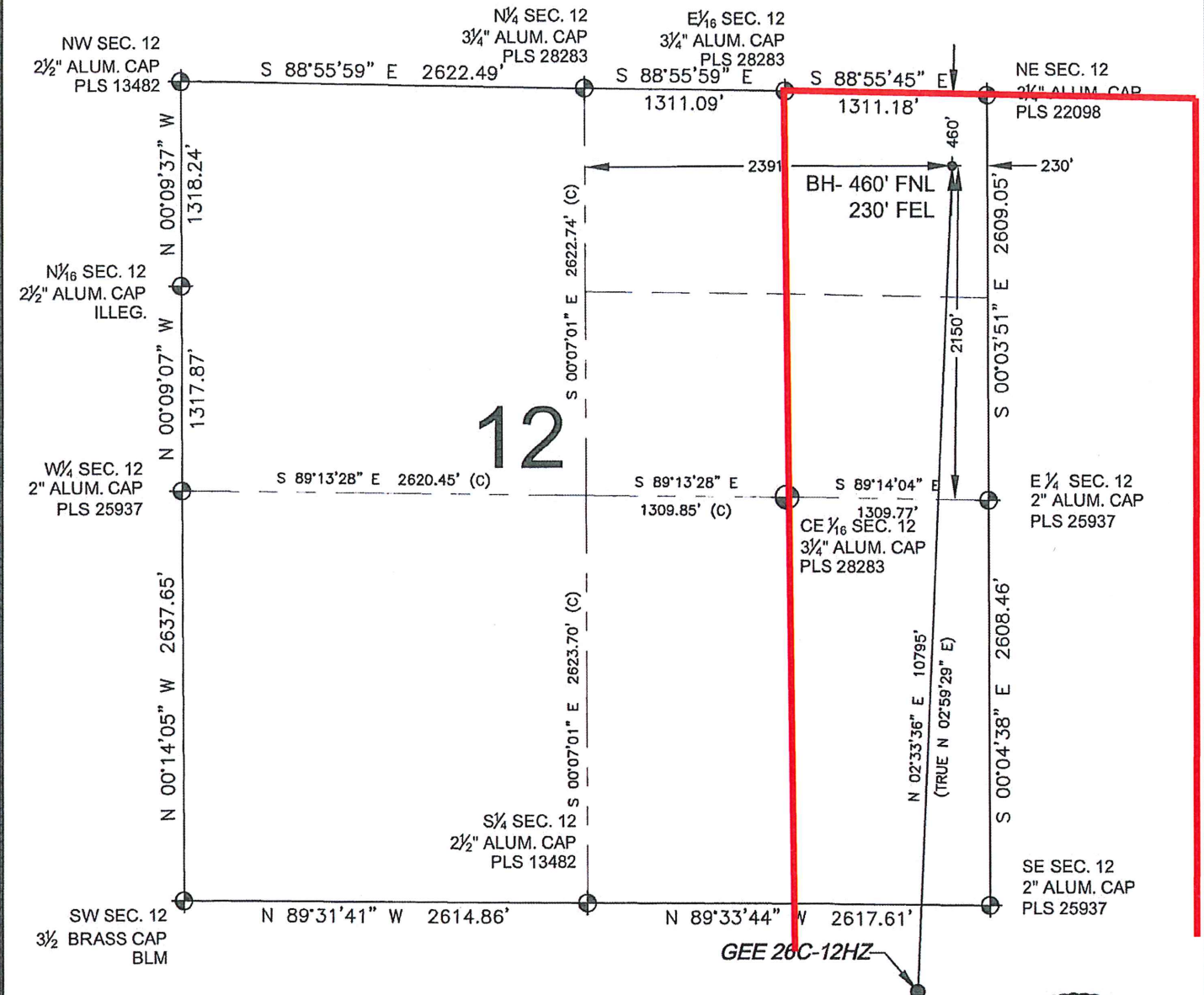
SEC. 24, T2N, R67W, 6TH P.M.

WELD COUNTY, COLORADO

NOTICE: ACCORDING TO COLORADO LAW YOU MUST COMMENCE ANY LEGAL ACTION BASED UPON ANY DEFECT IN THIS SURVEY WITHIN THREE YEARS AFTER YOU FIRST DISCOVER SUCH DEFECT. IN NO EVENT MAY ANY ACTION BASED UPON ANY DEFECT IN THIS SURVEY BE COMMENCED MORE THAN TEN YEARS FROM THIS SAID DATE OF THIS CERTIFICATION SHOWN HEREON.

# WELL LOCATION CERTIFICATE: GEE 26C-12HZ

SECTION 12, TOWNSHIP 2 NORTH, RANGE 67 WEST, 6TH P.M.

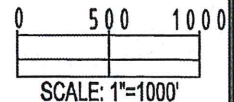


## NOTES:

1. THIS FIELD SURVEY CONFORMS TO THE MINIMUM STANDARDS SET BY THE C.O.G.C.C., RULE NO. 215
2. HORIZONTAL POSITIONS AND ORTHOMETRIC ELEVATIONS SHOWN AT THE WELL HEAD, ARE BASED ON GPS-RTK POSITIONS DERIVED FROM MINIMUM 2-HOUR STATIC OBSERVATIONS CORRECTED BY THE NATIONAL GEODETIC SURVEY ONLINE POSITIONING USER SERVICE, O.P.U.S. DATUM: HORIZONTAL = NAD83/2007, VERTICAL = NAVD88
3. THE BASIS OF BEARINGS ARE STATE PLANE COORDINATE SYSTEM GRID BEARINGS SHOWN HEREON BETWEEN THE DESCRIBED MONUMENTS SHOWN HEREON.
4. GRID DISTANCES ARE SHOWN, AS MEASURED IN THE FIELD, WITH TIES TO WELLS MEASURED PERPENDICULAR TO SECTION LINES.

## LEGEND

- ⊕ = EXISTING MONUMENT
- ⬮ = PROPOSED WELL
- ⬮ = BOTTOM HOLE
- ⬮ = EXISTING WELL
- BH = BOTTOM HOLE



BRADLEY L. LAMAN, PLS 38345  
COLORADO LICENSED PROFESSIONAL LAND SURVEYOR  
FOR AND ON BEHALF OF P.F.S., LLC

SHEET 3 OF 3

PREPARED BY:



FIELD DATE:

06-17-13

DRAWING DATE:

06-19-13

BY:

CLM

REV:

TJN

SURFACE LOCATION:

NE 1/4 NE 1/4,

SEC. 24, T2N, R67W, 6TH P.M.

WELD COUNTY, COLORADO

NOTICE: ACCORDING TO COLORADO LAW YOU MUST COMMENCE ANY LEGAL ACTION BASED UPON ANY DEFECT IN THIS SURVEY WITHIN THREE YEARS AFTER YOU FIRST DISCOVER SUCH DEFECT. IN NO EVENT MAY ANY ACTION BASED UPON ANY DEFECT IN THIS SURVEY BE COMMENCED MORE THAN TEN YEARS FROM THIS SAID DATE OF THIS CERTIFICATION SHOWN HEREON.