

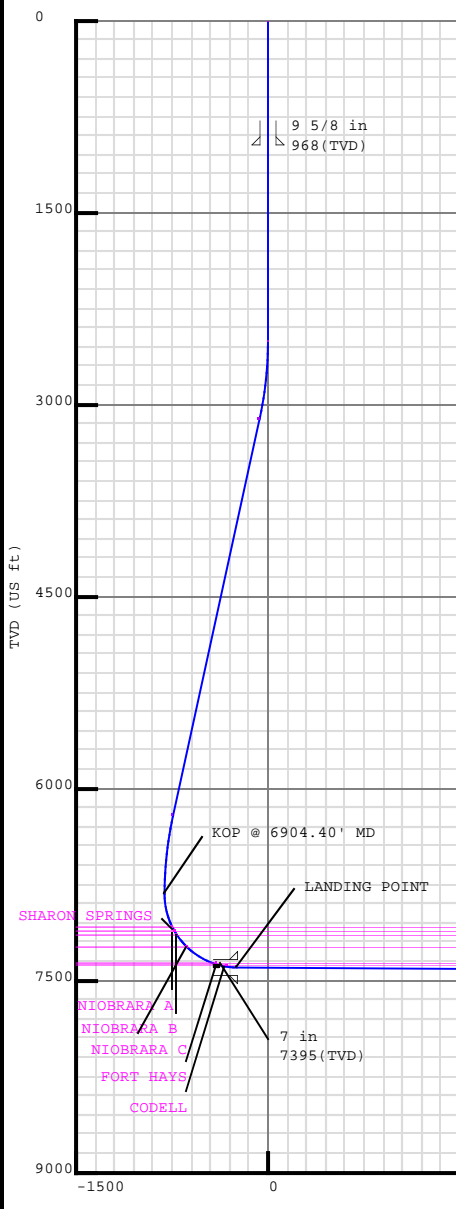
**5D Plan Report****ANADARKO**

Field Name: *WATTENBURG_NAD83*
Site Name: *GEE 16N-25HZ PAD*
Well Name: *GEE 16C-25HZ*
Plan: *PLAN 1*





Weatherford®



Plan Data for GEE 16C-25HZ

Field: WATTENBURG NAD83

Map Unit: USft Vertical Reference Datum (VRD): Mean Sea Level
Projected Coordinate System: NAD83 / Colorado North (ftUS)

Site: GEE 16N-25HZ PAD

Unit: USFeet TVD Reference:

Company Name: ANADARKO

Position: Northing: 1290305.10USft Latitude: 40.128353°

Position: Northing: 1298383.100Sic Easting: 3186621.41USft Longitude: -104.832598°

North Reference: True Grid Convergence: 0.43°

Elevation Above VPD: 4858.00USft

Slot: GEE 16C-25HZ

Position:

Offset is from Site centre

+N/-S: -0.00USft Northing: 1290305.10USft Latitude: 40.128353°

+E/-W: 0.00USft Easting: 3186621.41USft Longitude: -104.832598°

Elevation Above VRD: 4858.00USft

Well: GEE 16C-25HZ

Type: Main-Well

File Number:

Vertical Section: Position offset of origin from Slot centre:

+N/-S: 0.00USft Azimuth: 180.08°

+E/-W: -0.00USft

Magnetic Parameters:

Model: Field Strength: Declination: Dip: Date:

Model:	Field strength:	Determination:	Bif:	Date:
BGGM	52735(nT)	8.63°	66.74°	2013-07-08

Plan Point Information:

DogLeg Severity Unit: °/100.00ft

Position offsets from Slot centre

MD	Inc	Az	TVD	+N/-S	+E/-W	VSec	DLS	Toolface	Build	Turn
(USFT)	(°)	(°)	(USFT)	(USFT)	(USFT)	(USFT)	(DLSU)	(°)	(DLSU)	(DLSU)
0.00	0.00	0.00	0.00	0.00	0.00	0.00	0.00	0.0	0.00	0.00
2500.00	0.00	0.00	2500.00	0.00	0.00	0.00	0.00	0.0	0.00	0.00
3115.23	12.30	359.65	3110.52	65.81	-0.41	-65.81	2.00	359.6	2.00	0.00
6289.16	12.30	359.65	6211.53	742.19	-4.59	-742.18	0.00	0.0	0.00	0.00
6904.40	0.00	0.00	6822.05	808.00	-5.00	-807.99	2.00	180.0	-2.00	0.00
7800.93	89.65	180.08	7395.00	238.52	-5.75	-238.51	10.00	180.1	10.00	0.00
17700.30	89.65	180.08	7455.00	-9660.67	-18.75	9660.68	0.00	0.0	0.00	0.00

Target Set Information:

Name: 16C

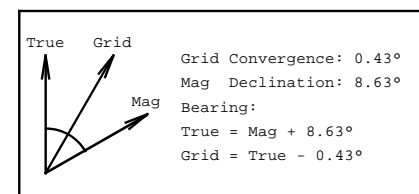
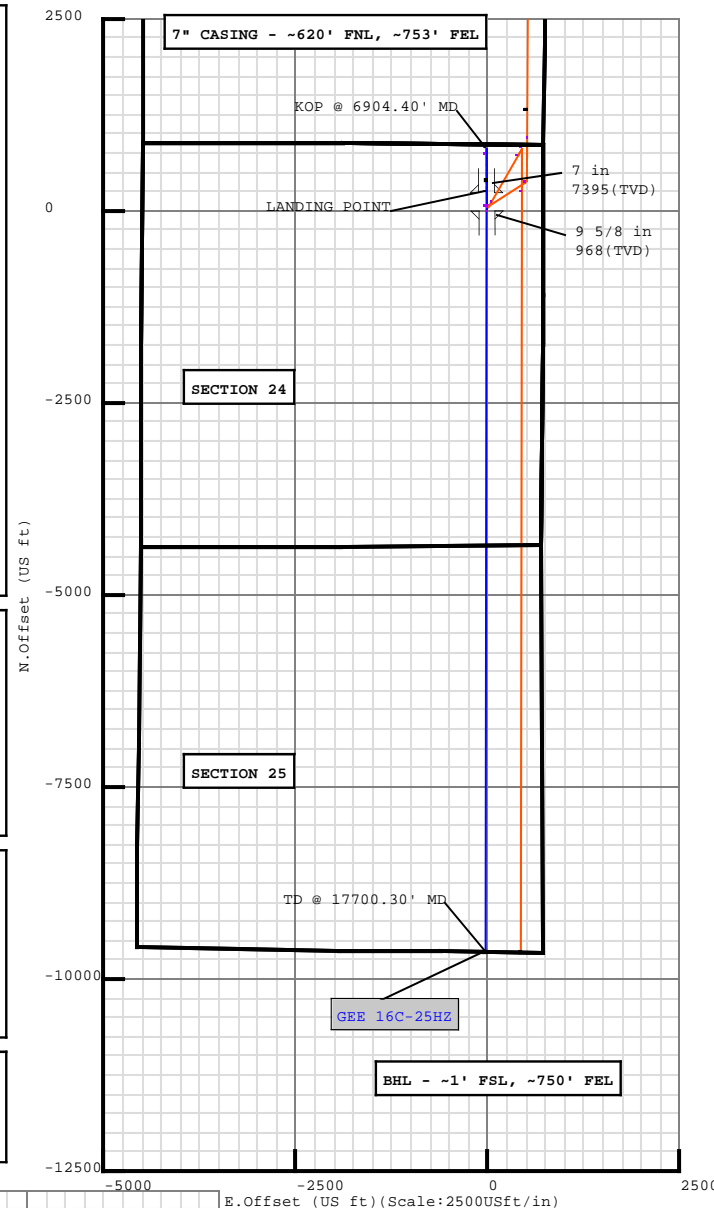
Name	TVD (USft)	Lat (°)	Long (°)
HEEL	7395.00	40.129447	-104.832606
PBHL	7455.00	40.101833	-104.832665

Formation Point Information:

Name	TVD Elevation		MD
	(Usft)	(Usft)	
SHARON SPRINGS	7086.00	-2211.00	7178.71
NIOBRARA A	7115.00	-2240.00	7211.90
NIOBRARA B	7148.00	-2273.00	7251.13
NIOBRARA C	7236.00	-2361.00	7366.99
FORT HAYS	7370.00	-2495.00	7634.49
CODELL	7389.00	-2514.00	7721.35

Casing Point Information:

Name	MD (USft)	TVD (USft)
9 5/8 in	968.00	968.00
7 in	7800.93	7395.00



Plan Surveys for the GEE 16C-25HZ

Site Name GEE 16N-25HZ PAD	Units : US ft	North Reference : True	Convergence Angle : 0.43
	Position	Northing : 1290305.10 US ft	Latitude : 40.128353
		Easting : 3186621.41 US ft	Longitude : -104.832598
	Elevation above: 4858.00 US ft Comment :		
Slot Name GEE 16C-25HZ	Position (Offsets relative to Site Centre)		
	+N / -S : -0.00 US ft	Northing : 1290305.10 US ft	Latitude : 40.128353
	+E / -W : 0.00 US ft	Easting : 3186621.41 US ft	Longitude : -104.832598
	Slot TVD Reference : Ground Elevation Elevation above : 4858.00 US ft Comment :		
Well Name GEE 16C-25HZ	Type : Main well	UWI :	Plan : PLAN 1
	Rig Height <i>Drill Floor</i> : 17.00 US ft	Comment :	
	Relative to : 4875.00 US ft		
	Closure Distance : 9660.69 US ft	Closure Azimuth : 180.111°	
	Vertical Section (Position of Origin Relative to Slot)		
	+N / -S : 0.00 US ft	+E / -W : -0.00 US ft	Az : 180.08°
	Magnetic Parameters		
	Model : BGGM	Field Strength : 52735.5nT	Dec : 8.63°
			Dip : 66.74°
			Date : 08/Jul/2013

Target Set				
Name : 16C		Number of Targets : 2		
Comment :				
TargetName:	Position (Relative to centre)			
HEEL	+N / -S : 398.53US ft		Northing : 1290703.60 US ft	
Shape:	+E / -W : -2.24 US ft		Easting : 3186616.17US ft	
Cuboid	TVD (Drill Floor) : 7395.00 US ft			
	Orientation	Azimuth : 0.00°	Inclination : 0.00°	
	Dimensions	Length : 20.00 US ft	Breadth : 20.00 US ft	Height : 20.00 US ft
TargetName:	Position (Relative to centre)			
PBHL	+N / -S : -9660.67US ft		Northing : 1280644.57 US ft	
Shape:	+E / -W : -18.75 US ft		Easting : 3186675.37US ft	
Cuboid	TVD (Drill Floor) : 7455.00 US ft			
	Orientation	Azimuth : 0.00°	Inclination : 0.00°	
	Dimensions	Length : 20.00 US ft	Breadth : 20.00 US ft	Height : 20.00 US ft

Casing Points (Relative to centre, TVD relative to Drill Floor)								
Name	MD (US ft)	Inc (°)	Az (°)	TVD (US ft)	N.Offset (US ft)	E.Offset (US ft)	Latitude (°)	Longitude (°)
9 5/8 in	968.00	0.00	0.00	968.00	0.00	0.00	40.128353	-104.832598
7 in	7800.93	89.65	180.08	7395.00	238.51	-5.75	40.129008	-104.832619

Well path created using minimum curvature

Salient Points (Relative to centre, TVD relative to Drill Floor)									
MD (US ft)	Inc (°)	Az (°)	TVD (US ft)	N.Offset (US ft)	E.Offset (US ft)	DLS (°/100 US ft)	T.Face (°)	VS (US ft)	Comment
0.00	0.00	0.00	0.00	0.00	0.00	0.00	0.00	0.00	
968.00	0.00	0.00	968.00	0.00	0.00	0.00	0.00	0.00	9 5/8 in
2500.00	0.00	0.00	2500.00	0.00	0.00	0.00	0.00	0.00	
3115.23	12.30	359.65	3110.52	65.81	-0.41	2.00	359.65	-65.80	
6289.16	12.30	359.65	6211.53	742.19	-4.59	0.00	0.00	-742.18	

5D Plan Report

Salient Points (Relative to centre, TVD relative to Drill Floor)									
MD (US ft)	Inc (°)	Az (°)	TVD (US ft)	N.Offset (US ft)	E.Offset (US ft)	DLS (°/100 US ft)	T.Face (°)	VS (US ft)	Comment
6904.40	0.00	0.00	6822.05	808.00	-5.00	2.00	180.00	-807.99	KOP @ 6904.40' MD
7178.71	27.43	180.08	7086.00	743.58	-5.08	10.00	180.08	-743.57	SHARON SPRINGS :
7211.90	30.75	180.08	7115.00	727.45	-5.11	10.00	0.00	-727.43	NIOBRARA A :
7251.13	34.67	180.08	7148.00	706.25	-5.13	10.00	0.00	-706.24	NIOBRARA B :
7366.99	46.26	180.08	7236.00	631.18	-5.23	10.00	0.00	-631.17	NIOBRARA C :
7634.49	73.01	180.08	7370.00	402.47	-5.53	10.00	0.00	-402.46	FORT HAYS :
7721.35	81.70	180.08	7389.00	317.80	-5.64	10.00	0.00	-317.79	CODELL :
7800.93	89.65	180.08	7395.00	238.52	-5.75	10.00	0.00	-238.50	LANDING POINT
7800.93	89.65	180.08	7395.00	238.51	-5.75	0.00	0.00	-238.50	7 in
17700.30	89.65	180.08	7455.00	-9660.67	-18.75	0.00	0.00	9660.69	TD @ 17700.30' MD

Interpolated Points (Relative to centre, TVD relative to Drill Floor)									
MD (US ft)	Inc (°)	Az (°)	TVD (US ft)	N.Offset (US ft)	E.Offset (US ft)	DLS (°/100 US ft)	T.Face (°)	VS (US ft)	Comment
0.00	0.00	0.00	0.00	0.00	0.00	0.00	0.00	0.00	
100.00	0.00	0.00	100.00	0.00	0.00	0.00	0.00	0.00	
200.00	0.00	0.00	200.00	0.00	0.00	0.00	0.00	0.00	
300.00	0.00	0.00	300.00	0.00	0.00	0.00	0.00	0.00	
400.00	0.00	0.00	400.00	0.00	0.00	0.00	0.00	0.00	
500.00	0.00	0.00	500.00	0.00	0.00	0.00	0.00	0.00	
600.00	0.00	0.00	600.00	0.00	0.00	0.00	0.00	0.00	
700.00	0.00	0.00	700.00	0.00	0.00	0.00	0.00	0.00	
800.00	0.00	0.00	800.00	0.00	0.00	0.00	0.00	0.00	
900.00	0.00	0.00	900.00	0.00	0.00	0.00	0.00	0.00	
968.00	0.00	0.00	968.00	0.00	0.00	0.00	0.00	0.00	9 5/8 in
1000.00	0.00	0.00	1000.00	0.00	0.00	0.00	0.00	0.00	
1100.00	0.00	0.00	1100.00	0.00	0.00	0.00	0.00	0.00	
1200.00	0.00	0.00	1200.00	0.00	0.00	0.00	0.00	0.00	
1300.00	0.00	0.00	1300.00	0.00	0.00	0.00	0.00	0.00	
1400.00	0.00	0.00	1400.00	0.00	0.00	0.00	0.00	0.00	
1500.00	0.00	0.00	1500.00	0.00	0.00	0.00	0.00	0.00	
1600.00	0.00	0.00	1600.00	0.00	0.00	0.00	0.00	0.00	
1700.00	0.00	0.00	1700.00	0.00	0.00	0.00	0.00	0.00	
1800.00	0.00	0.00	1800.00	0.00	0.00	0.00	0.00	0.00	
1900.00	0.00	0.00	1900.00	0.00	0.00	0.00	0.00	0.00	
2000.00	0.00	0.00	2000.00	0.00	0.00	0.00	0.00	0.00	
2100.00	0.00	0.00	2100.00	0.00	0.00	0.00	0.00	0.00	
2200.00	0.00	0.00	2200.00	0.00	0.00	0.00	0.00	0.00	
2300.00	0.00	0.00	2300.00	0.00	0.00	0.00	0.00	0.00	
2400.00	0.00	0.00	2400.00	0.00	0.00	0.00	0.00	0.00	
2500.00	0.00	0.00	2500.00	0.00	0.00	0.00	0.00	0.00	
2600.00	2.00	359.65	2599.98	1.75	-0.01	2.00	359.65	-1.74	

5D Plan Report

Interpolated Points (Relative to centre, TVD relative to Drill Floor)									
MD (US ft)	Inc (°)	Az (°)	TVD (US ft)	N.Offset (US ft)	E.Offset (US ft)	DLS (°/100 US ft)	T.Face (°)	VS (US ft)	Comment
2700.00	4.00	359.65	2699.84	6.98	-0.04	2.00	0.00	-6.97	
2800.00	6.00	359.65	2799.45	15.69	-0.10	2.00	0.00	-15.69	
2900.00	8.00	359.65	2898.70	27.88	-0.17	2.00	0.00	-27.88	
3000.00	10.00	359.65	2997.47	43.52	-0.27	2.00	0.00	-43.52	
3100.00	12.00	359.65	3095.62	62.60	-0.39	2.00	0.00	-62.60	
3115.23	12.30	359.65	3110.52	65.81	-0.41	2.00	0.00	-65.80	
3200.00	12.30	359.65	3193.33	83.87	-0.52	0.00	0.00	-83.87	
3300.00	12.30	359.65	3291.04	105.18	-0.65	0.00	0.00	-105.18	
3400.00	12.30	359.65	3388.74	126.49	-0.78	0.00	0.00	-126.49	
3500.00	12.30	359.65	3486.44	147.80	-0.91	0.00	0.00	-147.80	
3600.00	12.30	359.65	3584.15	169.11	-1.05	0.00	0.00	-169.11	
3700.00	12.30	359.65	3681.85	190.43	-1.18	0.00	0.00	-190.42	
3800.00	12.30	359.65	3779.55	211.74	-1.31	0.00	0.00	-211.73	
3900.00	12.30	359.65	3877.25	233.05	-1.44	0.00	0.00	-233.04	
4000.00	12.30	359.65	3974.96	254.36	-1.57	0.00	0.00	-254.35	
4100.00	12.30	359.65	4072.66	275.67	-1.71	0.00	0.00	-275.66	
4200.00	12.30	359.65	4170.36	296.98	-1.84	0.00	0.00	-296.97	
4300.00	12.30	359.65	4268.07	318.29	-1.97	0.00	0.00	-318.28	
4400.00	12.30	359.65	4365.77	339.60	-2.10	0.00	0.00	-339.59	
4500.00	12.30	359.65	4463.47	360.91	-2.23	0.00	0.00	-360.90	
4600.00	12.30	359.65	4561.17	382.22	-2.37	0.00	0.00	-382.21	
4700.00	12.30	359.65	4658.88	403.53	-2.50	0.00	0.00	-403.52	
4800.00	12.30	359.65	4756.58	424.84	-2.63	0.00	0.00	-424.83	
4900.00	12.30	359.65	4854.28	446.15	-2.76	0.00	0.00	-446.14	
5000.00	12.30	359.65	4951.99	467.46	-2.89	0.00	0.00	-467.46	
5100.00	12.30	359.65	5049.69	488.77	-3.02	0.00	0.00	-488.77	
5200.00	12.30	359.65	5147.39	510.08	-3.16	0.00	0.00	-510.08	
5300.00	12.30	359.65	5245.09	531.40	-3.29	0.00	0.00	-531.39	
5400.00	12.30	359.65	5342.80	552.71	-3.42	0.00	0.00	-552.70	
5500.00	12.30	359.65	5440.50	574.02	-3.55	0.00	0.00	-574.01	
5600.00	12.30	359.65	5538.20	595.33	-3.68	0.00	0.00	-595.32	
5700.00	12.30	359.65	5635.90	616.64	-3.82	0.00	0.00	-616.63	
5800.00	12.30	359.65	5733.61	637.95	-3.95	0.00	0.00	-637.94	
5900.00	12.30	359.65	5831.31	659.26	-4.08	0.00	0.00	-659.25	
6000.00	12.30	359.65	5929.01	680.57	-4.21	0.00	0.00	-680.56	
6100.00	12.30	359.65	6026.72	701.88	-4.34	0.00	0.00	-701.87	
6200.00	12.30	359.65	6124.42	723.19	-4.48	0.00	0.00	-723.18	
6289.16	12.30	359.65	6211.53	742.19	-4.59	0.00	0.00	-742.18	
6300.00	12.09	359.65	6222.13	744.48	-4.61	2.00	180.00	-744.47	
6400.00	10.09	359.65	6320.25	763.71	-4.73	2.00	180.00	-763.70	
6500.00	8.09	359.65	6418.99	779.51	-4.82	2.00	180.00	-779.49	

5D Plan Report

Interpolated Points (Relative to centre, TVD relative to Drill Floor)									
MD (US ft)	Inc (°)	Az (°)	TVD (US ft)	N.Offset (US ft)	E.Offset (US ft)	DLS (°/100 US ft)	T.Face (°)	VS (US ft)	Comment
6600.00	6.09	359.65	6518.22	791.84	-4.90	2.00	180.00	-791.83	
6700.00	4.09	359.65	6617.83	800.71	-4.95	2.00	180.00	-800.70	
6800.00	2.09	359.65	6717.68	806.10	-4.99	2.00	180.00	-806.09	
6900.00	0.09	359.65	6817.65	808.00	-5.00	2.00	180.00	-807.99	
6904.40	0.00	0.00	6822.05	808.00	-5.00	2.00	180.00	-807.99	KOP @ 6904.40' MD
7000.00	9.56	180.08	6917.21	800.04	-5.01	10.00	180.08	-800.03	
7100.00	19.56	180.08	7013.88	774.93	-5.04	10.00	0.00	-774.92	
7178.71	27.43	180.08	7086.00	743.58	-5.08	10.00	0.00	-743.57	SHARON SPRINGS :
7200.00	29.56	180.08	7104.71	733.42	-5.10	10.00	0.00	-733.41	
7211.90	30.75	180.08	7115.00	727.45	-5.11	10.00	0.00	-727.43	NIOBRARA A :
7251.13	34.67	180.08	7148.00	706.25	-5.13	10.00	0.00	-706.24	NIOBRARA B :
7300.00	39.56	180.08	7186.96	676.77	-5.17	10.00	0.00	-676.76	
7366.99	46.26	180.08	7236.00	631.18	-5.23	10.00	0.00	-631.17	NIOBRARA C :
7400.00	49.56	180.08	7258.12	606.69	-5.26	10.00	0.00	-606.68	
7500.00	59.56	180.08	7316.03	525.32	-5.37	10.00	0.00	-525.31	
7600.00	69.56	180.08	7358.93	435.13	-5.49	10.00	0.00	-435.12	
7634.49	73.01	180.08	7370.00	402.47	-5.53	10.00	0.00	-402.46	FORT HAYS :
7700.00	79.56	180.08	7385.52	338.86	-5.62	10.00	0.00	-338.85	
7721.35	81.70	180.08	7389.00	317.80	-5.64	10.00	0.00	-317.79	CODELL :
7800.00	89.56	180.08	7394.99	239.44	-5.75	10.00	0.00	-239.43	
7800.93	89.65	180.08	7395.00	238.52	-5.75	10.00	0.00	-238.50	LANDING POINT
7800.93	89.65	180.08	7395.00	238.51	-5.75	0.00	0.00	-238.50	7 in
7900.00	89.65	180.08	7395.60	139.44	-5.88	0.00	0.00	-139.43	
8000.00	89.65	180.08	7396.20	39.44	-6.01	0.00	0.00	-39.43	
8100.00	89.65	180.08	7396.81	-60.55	-6.14	0.00	0.00	60.57	
8200.00	89.65	180.08	7397.42	-160.55	-6.27	0.00	0.00	160.56	
8300.00	89.65	180.08	7398.02	-260.55	-6.40	0.00	0.00	260.56	
8400.00	89.65	180.08	7398.63	-360.55	-6.53	0.00	0.00	360.56	
8500.00	89.65	180.08	7399.23	-460.55	-6.67	0.00	0.00	460.56	
8600.00	89.65	180.08	7399.84	-560.54	-6.80	0.00	0.00	560.56	
8700.00	89.65	180.08	7400.45	-660.54	-6.93	0.00	0.00	660.55	
8800.00	89.65	180.08	7401.05	-760.54	-7.06	0.00	0.00	760.55	
8900.00	89.65	180.08	7401.66	-860.54	-7.19	0.00	0.00	860.55	
9000.00	89.65	180.08	7402.27	-960.54	-7.32	0.00	0.00	960.55	
9100.00	89.65	180.08	7402.87	-1060.53	-7.45	0.00	0.00	1060.55	
9200.00	89.65	180.08	7403.48	-1160.53	-7.58	0.00	0.00	1160.55	
9300.00	89.65	180.08	7404.08	-1260.53	-7.72	0.00	0.00	1260.54	
9400.00	89.65	180.08	7404.69	-1360.53	-7.85	0.00	0.00	1360.54	
9500.00	89.65	180.08	7405.30	-1460.53	-7.98	0.00	0.00	1460.54	
9600.00	89.65	180.08	7405.90	-1560.52	-8.11	0.00	0.00	1560.54	
9700.00	89.65	180.08	7406.51	-1660.52	-8.24	0.00	0.00	1660.54	

5D Plan Report

Interpolated Points (Relative to centre, TVD relative to Drill Floor)									
MD (US ft)	Inc (°)	Az (°)	TVD (US ft)	N. Offset (US ft)	E. Offset (US ft)	DLS (°/100 US ft)	T.Face (°)	VS (US ft)	Comment
9800.00	89.65	180.08	7407.11	-1760.52	-8.37	0.00	0.00	1760.53	
9900.00	89.65	180.08	7407.72	-1860.52	-8.50	0.00	0.00	1860.53	
10000.00	89.65	180.08	7408.33	-1960.52	-8.64	0.00	0.00	1960.53	
10100.00	89.65	180.08	7408.93	-2060.52	-8.77	0.00	0.00	2060.53	
10200.00	89.65	180.08	7409.54	-2160.51	-8.90	0.00	0.00	2160.53	
10300.00	89.65	180.08	7410.15	-2260.51	-9.03	0.00	0.00	2260.53	
10400.00	89.65	180.08	7410.75	-2360.51	-9.16	0.00	0.00	2360.52	
10500.00	89.65	180.08	7411.36	-2460.51	-9.29	0.00	0.00	2460.52	
10600.00	89.65	180.08	7411.96	-2560.51	-9.42	0.00	0.00	2560.52	
10700.00	89.65	180.08	7412.57	-2660.50	-9.55	0.00	0.00	2660.52	
10800.00	89.65	180.08	7413.18	-2760.50	-9.69	0.00	0.00	2760.52	
10900.00	89.65	180.08	7413.78	-2860.50	-9.82	0.00	0.00	2860.51	
11000.00	89.65	180.08	7414.39	-2960.50	-9.95	0.00	0.00	2960.51	
11100.00	89.65	180.08	7414.99	-3060.50	-10.08	0.00	0.00	3060.51	
11200.00	89.65	180.08	7415.60	-3160.49	-10.21	0.00	0.00	3160.51	
11300.00	89.65	180.08	7416.21	-3260.49	-10.34	0.00	0.00	3260.51	
11400.00	89.65	180.08	7416.81	-3360.49	-10.47	0.00	0.00	3360.51	
11500.00	89.65	180.08	7417.42	-3460.49	-10.60	0.00	0.00	3460.50	
11600.00	89.65	180.08	7418.02	-3560.49	-10.74	0.00	0.00	3560.50	
11700.00	89.65	180.08	7418.63	-3660.48	-10.87	0.00	0.00	3660.50	
11800.00	89.65	180.08	7419.24	-3760.48	-11.00	0.00	0.00	3760.50	
11900.00	89.65	180.08	7419.84	-3860.48	-11.13	0.00	0.00	3860.50	
12000.00	89.65	180.08	7420.45	-3960.48	-11.26	0.00	0.00	3960.49	
12100.00	89.65	180.08	7421.06	-4060.48	-11.39	0.00	0.00	4060.49	
12200.00	89.65	180.08	7421.66	-4160.47	-11.52	0.00	0.00	4160.49	
12300.00	89.65	180.08	7422.27	-4260.47	-11.65	0.00	0.00	4260.49	
12400.00	89.65	180.08	7422.87	-4360.47	-11.79	0.00	0.00	4360.49	
12500.00	89.65	180.08	7423.48	-4460.47	-11.92	0.00	0.00	4460.48	
12600.00	89.65	180.08	7424.09	-4560.47	-12.05	0.00	0.00	4560.48	
12700.00	89.65	180.08	7424.69	-4660.47	-12.18	0.00	0.00	4660.48	
12800.00	89.65	180.08	7425.30	-4760.46	-12.31	0.00	0.00	4760.48	
12900.00	89.65	180.08	7425.90	-4860.46	-12.44	0.00	0.00	4860.48	
13000.00	89.65	180.08	7426.51	-4960.46	-12.57	0.00	0.00	4960.48	
13100.00	89.65	180.08	7427.12	-5060.46	-12.71	0.00	0.00	5060.47	
13200.00	89.65	180.08	7427.72	-5160.46	-12.84	0.00	0.00	5160.47	
13300.00	89.65	180.08	7428.33	-5260.45	-12.97	0.00	0.00	5260.47	
13400.00	89.65	180.08	7428.94	-5360.45	-13.10	0.00	0.00	5360.47	
13500.00	89.65	180.08	7429.54	-5460.45	-13.23	0.00	0.00	5460.47	
13600.00	89.65	180.08	7430.15	-5560.45	-13.36	0.00	0.00	5560.46	
13700.00	89.65	180.08	7430.75	-5660.45	-13.49	0.00	0.00	5660.46	
13800.00	89.65	180.08	7431.36	-5760.44	-13.62	0.00	0.00	5760.46	

5D Plan Report

Interpolated Points (Relative to centre, TVD relative to Drill Floor)									
MD (US ft)	Inc (°)	Az (°)	TVD (US ft)	N.Offset (US ft)	E.Offset (US ft)	DLS (°/100 US ft)	T.Face (°)	VS (US ft)	Comment
13900.00	89.65	180.08	7431.97	-5860.44	-13.76	0.00	0.00	5860.46	
14000.00	89.65	180.08	7432.57	-5960.44	-13.89	0.00	0.00	5960.46	
14100.00	89.65	180.08	7433.18	-6060.44	-14.02	0.00	0.00	6060.46	
14200.00	89.65	180.08	7433.78	-6160.44	-14.15	0.00	0.00	6160.45	
14300.00	89.65	180.08	7434.39	-6260.43	-14.28	0.00	0.00	6260.45	
14400.00	89.65	180.08	7435.00	-6360.43	-14.41	0.00	0.00	6360.45	
14500.00	89.65	180.08	7435.60	-6460.43	-14.54	0.00	0.00	6460.45	
14600.00	89.65	180.08	7436.21	-6560.43	-14.67	0.00	0.00	6560.45	
14700.00	89.65	180.08	7436.81	-6660.43	-14.81	0.00	0.00	6660.44	
14800.00	89.65	180.08	7437.42	-6760.42	-14.94	0.00	0.00	6760.44	
14900.00	89.65	180.08	7438.03	-6860.42	-15.07	0.00	0.00	6860.44	
15000.00	89.65	180.08	7438.63	-6960.42	-15.20	0.00	0.00	6960.44	
15100.00	89.65	180.08	7439.24	-7060.42	-15.33	0.00	0.00	7060.44	
15200.00	89.65	180.08	7439.85	-7160.42	-15.46	0.00	0.00	7160.44	
15300.00	89.65	180.08	7440.45	-7260.42	-15.59	0.00	0.00	7260.43	
15400.00	89.65	180.08	7441.06	-7360.41	-15.73	0.00	0.00	7360.43	
15500.00	89.65	180.08	7441.66	-7460.41	-15.86	0.00	0.00	7460.43	
15600.00	89.65	180.08	7442.27	-7560.41	-15.99	0.00	0.00	7560.43	
15700.00	89.65	180.08	7442.88	-7660.41	-16.12	0.00	0.00	7660.43	
15800.00	89.65	180.08	7443.48	-7760.41	-16.25	0.00	0.00	7760.42	
15900.00	89.65	180.08	7444.09	-7860.40	-16.38	0.00	0.00	7860.42	
16000.00	89.65	180.08	7444.69	-7960.40	-16.51	0.00	0.00	7960.42	
16100.00	89.65	180.08	7445.30	-8060.40	-16.64	0.00	0.00	8060.42	
16200.00	89.65	180.08	7445.91	-8160.40	-16.78	0.00	0.00	8160.42	
16300.00	89.65	180.08	7446.51	-8260.40	-16.91	0.00	0.00	8260.42	
16400.00	89.65	180.08	7447.12	-8360.39	-17.04	0.00	0.00	8360.41	
16500.00	89.65	180.08	7447.73	-8460.39	-17.17	0.00	0.00	8460.41	
16600.00	89.65	180.08	7448.33	-8560.39	-17.30	0.00	0.00	8560.41	
16700.00	89.65	180.08	7448.94	-8660.39	-17.43	0.00	0.00	8660.41	
16800.00	89.65	180.08	7449.54	-8760.39	-17.56	0.00	0.00	8760.41	
16900.00	89.65	180.08	7450.15	-8860.38	-17.69	0.00	0.00	8860.40	
17000.00	89.65	180.08	7450.76	-8960.38	-17.83	0.00	0.00	8960.40	
17100.00	89.65	180.08	7451.36	-9060.38	-17.96	0.00	0.00	9060.40	
17200.00	89.65	180.08	7451.97	-9160.38	-18.09	0.00	0.00	9160.40	
17300.00	89.65	180.08	7452.57	-9260.38	-18.22	0.00	0.00	9260.40	
17400.00	89.65	180.08	7453.18	-9360.37	-18.35	0.00	0.00	9360.39	
17500.00	89.65	180.08	7453.79	-9460.37	-18.48	0.00	0.00	9460.39	
17600.00	89.65	180.08	7454.39	-9560.37	-18.61	0.00	0.00	9560.39	
17700.00	89.65	180.08	7455.00	-9660.37	-18.74	0.00	0.00	9660.39	
17700.30	89.65	180.08	7455.00	-9660.67	-18.75	0.00	0.00	9660.69	TD @ 17700.30' MD

5D Plan Report

Formation Points	(Relative to centre, TVD relative to Drill Floor)		
Name		MD (US ft)	TVD (US ft)
SHARON SPRINGS		7178.71	7086.00
NIOBRARA A		7211.90	7115.00
NIOBRARA B		7251.13	7148.00
NIOBRARA C		7366.99	7236.00
FORT HAYS		7634.49	7370.00
CODELL		7721.35	7389.00