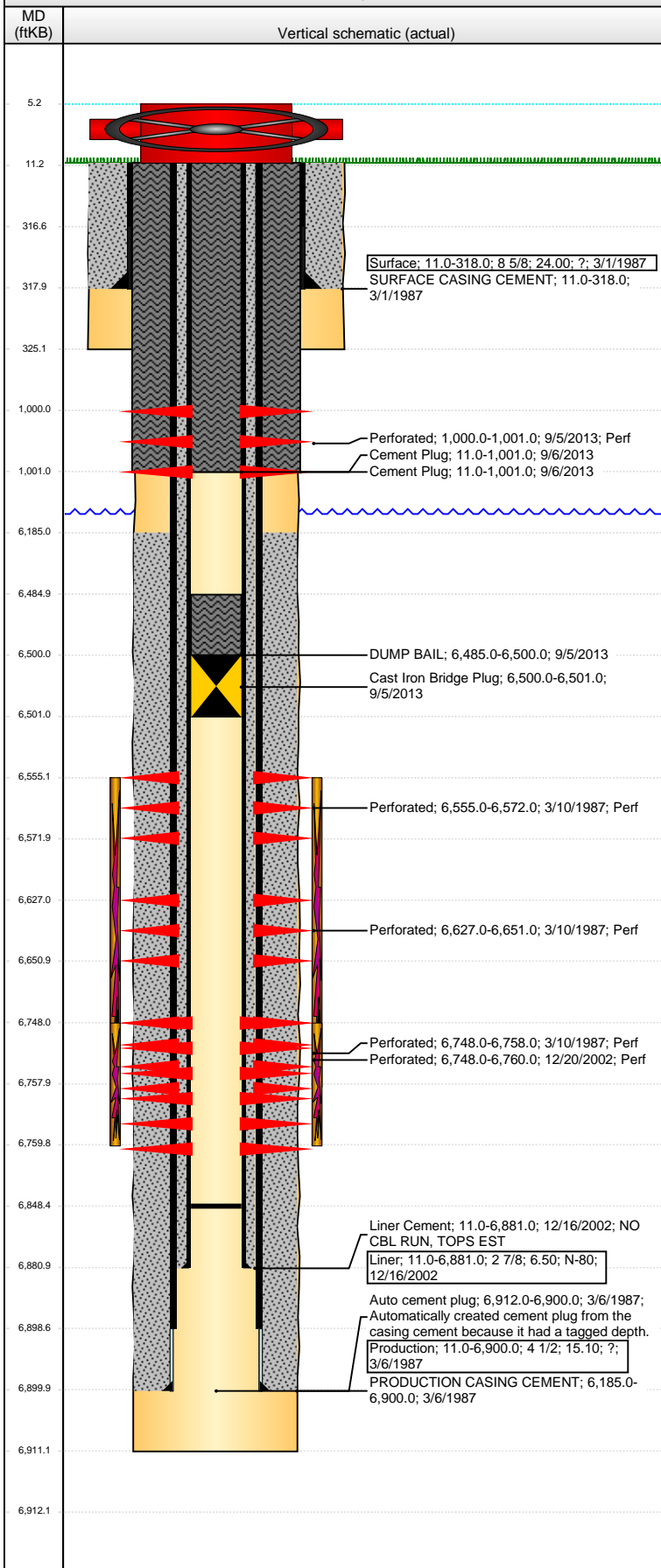


Well Name: TREBOR B02-10

VERTICAL - ORIGINAL HOLE, 9/30/2013 3:08:03 PM



Well Header

API	Business Unit	District	Well Config
05-123-13381	WATTENBERG	15	VERTICAL
Original KB Elevation (ft)	KB - GL / MSL (ftKB)	Spud Date	P & A Date
4,620.00	11.00	3/1/1987	9/23/2013

Comment

ALL ACCRUED COSTS CHARGED TO:
WOLFPACK B02-65-1HN
AFE# 139197

Directions To Well

WCR 59 & 60 1/2. GO 1/2 mi West, South Into.

Congressional Location

Quarter 1	Quarter 2	Quarter 3	Quarter 4	Section	Township	Twtnshp N...	Range	Rng E/W Dir
	NW	SE		2	5	N	64	W

Bottom Hole Location

North-South Distance (ft)	From N or S Line	East-West Distance (ft)	From E or W Line

Plug Back Total Depths

Date	Depth (ftKB)	Method	Com
3/10/1987	6,912.0	CASED HOLE LOG	DEPTH LOGGER ON CBL
12/16/2002	6,879.0	CASING TALLY	NOTCHED SLIM COLLAR W/ BAFFLE
12/3/2003	6,843.0	TAG	TAG UP
7/23/2013	6,763.9	TAG	TAG W/ BIT & SCRAPER.
7/23/2013	6,848.4	TAG	C/O W/ B&S

Wellbore Sections

Section Des	Size (in)	Act Top (ftKB)	Act Btm (ftKB)
SURFACE	12 1/4	11.0	325.0
PRODUCTION	7 7/8	325.0	6,911.0

Zone Statuses

Zone Name	Status Date	Status	Job
CODELL	4/3/1987	PR	DRILLING/COMPLETION - ORIGINAL, 3/1/1987 00:00
CODELL	12/29/2002	PR	CASING REPAIR, 12/12/2002 00:00
CODELL	12/5/2003	PR	RE-FRAC, 11/19/2003 00:00
CODELL	9/5/2013	P&A	ABANDON WELL, 9/3/2013 06:00
NIOBRARA	4/3/1987	PR	DRILLING/COMPLETION - ORIGINAL, 3/1/1987 00:00
NIOBRARA	12/16/2002	SI	CASING REPAIR, 12/12/2002 00:00
NIOBRARA	9/5/2013	P&A	ABANDON WELL, 9/3/2013 06:00

Casing Strings

Surface, 318.0ftKB

Casing Description	Run Date	OD (in)	Wt/Len (l...)	Grade	Top (ftKB)	MD (ftKB)
Surface	3/1/1987	8 5/8	24.00	?	11.0	318.0

Liner, 6,881.0ftKB

Casing Description	Run Date	OD (in)	Wt/Len (l...)	Grade	Top (ftKB)	MD (ftKB)
Liner	12/16/2002	2 7/8	6.50	N-80	11.0	6,881.0

Production, 6,900.0ftKB

Casing Description	Run Date	OD (in)	Wt/Len (l...)	Grade	Top (ftKB)	MD (ftKB)
Production	3/6/1987	4 1/2	15.10	?	11.0	6,900.0

Cement

Description	Top Depth (ftKB)	Bottom Depth (ftKB)
SURFACE CASING CEMENT	11.0	318.0
PRODUCTION CASING CEMENT	6,185.0	6,900.0
Liner Cement	11.0	6,881.0
DUMP BAIL	6,485.0	6,500.0
Cement Plug	11.0	1,001.0
Cement Plug	11.0	1,001.0

Tubing Components

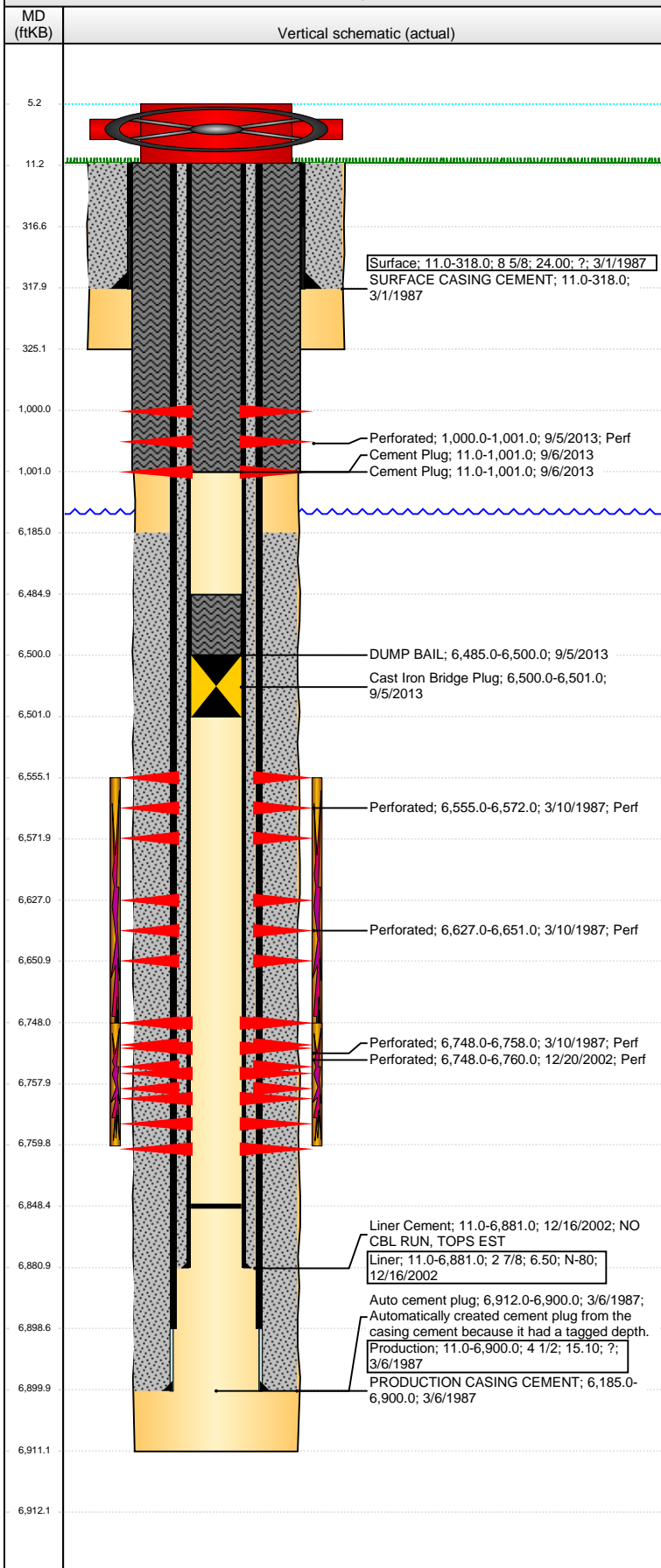
Item Des	OD (in)	Wt (lb/ft)	Grade	Jts	Len (ft)	Btm (ftKB)	Btm (TVD) (ftKB)

Perforation Data

Zone	Bnch/St g	Entered Shot Total	Top (ftKB)	Btm (ftKB)	Date
NIOBRARA, ORIGINAL HOLE	B	4	1,000.00	1,001.00	9/5/2013
		6	6,555.00	6,572.00	3/10/1987

Well Name: TREBOR B02-10

VERTICAL - ORIGINAL HOLE, 9/30/2013 3:08:07 PM



Perforation Data

Zone	Brnch/St g	Entered Shot Total	Top (ftKB)	Btm (ftKB)	Date
NIORARA, ORIGINAL HOLE	C	3	6,627.00	6,651.00	3/10/1987
CODELL, ORIGINAL HOLE		6	6,748.00	6,758.00	3/10/1987
CODELL, ORIGINAL HOLE		48	6,748.00	6,760.00	12/20/2002

Stimulations & Treatments

Date	Zone	Primary Job Type
3/11/1987	NIORARA-CODELL, ORIGINAL HOLE	DRILLING/COMPLETION - ORIGINAL
Technical Result	Tech Result Details	Tech Result Note

Comment

Date	Zone	Primary Job Type
12/1/2003	CODELL, ORIGINAL HOLE	RE-FRAC
Technical Result	Tech Result Details	Tech Result Note

Comment

Other In Hole

Run Date	Des	OD (in)	Top (ftKB)	Btm (ftKB)
9/5/2013	Cast Iron Bridge Plug	2.44	6,500.0	6,501.0

Logs

Date	Type	Top (ftKB)	Btm (ftKB)
3/6/1987	COMPENSATED DENSITY	3,300.0	6,871.0
3/6/1987	INDUCTION	276.0	6,871.0
3/10/1987	CBL/CCL/GR	5,939.0	6,832.0
3/10/1987	PERFORATION	0.0	0.0
12/20/2002	GAMMA RAY	6,200.0	6,849.0
2/19/2013	GYRO	11.0	6,700.0