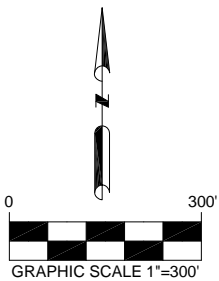
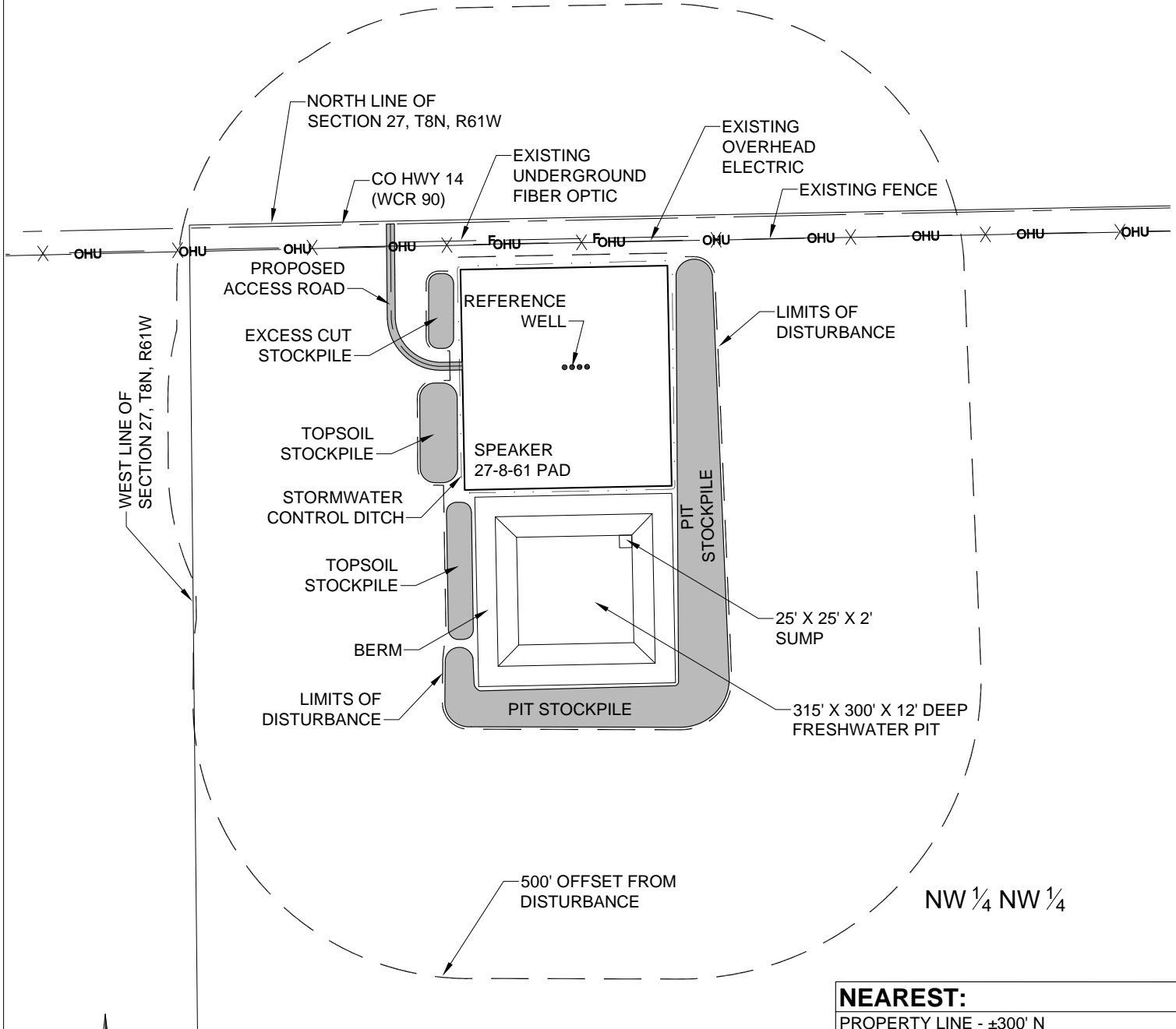


**SPEAKER 27-8-61
CARRIZO NIOBRARA LLC
LOCATION DRAWING**



NEAREST:

PROPERTY LINE - ±300' N
PUBLIC ROAD - (CO HWY 14) ±302' N
BUILDING - (HOUSE) ±2522' NE
RAILROAD - >5280' NE
POWERLINE - ±254' N
SURFACE WATER - (STREAM) >5280' NW
WATER WELL - ±2437' NE SWL = 240'
PERMIT: 126281, RECEIPT: 0468958
FENCE - ±250' N
PROPOSED ACCESS ROAD - ±220' W

REFERENCE WELL

LATITUDE: 40.639215°
LONGITUDE: 104.198884°
FOOTAGE: 300' FNL & 764' FWL
GROUND ELEVATION: 4999'
PDOP: 2.12
GPS OPERATOR: BEN HARDENBERGH
SURFACE USE: RANGELAND

PREPARED BY:



FIELD DATE:

06-11-13

DRAWING DATE:

07-24-13

BY:

CPO

CHECKED BY:

JLF

PAD NAME:

SPEAKER 27-8-61

SURFACE LOCATION:

NW 1/4, NW 1/4, SEC. 27, T8N, R61W, 6TH P.M.
WELD COUNTY, COLORADO

PREPARED FOR:

CARRIZO
NIOBRARA LLC