

WELL DETAILS: BADDING 2N-26HZ										
GL 5113' & KB 17" @ 5130.00ft (ASSUMED)										
		+N/-S 0.00	+E/-W 0.00	Northing 1281269.10	Easting 3212075.11	Latitude 40.1029869	Longitude -104.7418500			
SECTION DETAILS										
MD	Inc	Azi	TVD	+N/-S	+E/-W	Dleg	TFace	VSect	Target	Annotation
0.00	0.00	0.00	0.00	0.00	0.00	0.00	0.00	0.00		
1502.00	0.00	0.00	1502.00	0.00	0.00	0.00	0.00	0.00		Start Build 2.00
2001.98	10.00	156.80	1999.45	-40.00	17.14	2.00	156.80	-40.00		Start 2377.22 hold at 2001.98 MD
4379.20	10.00	156.80	4340.55	-419.41	179.75	0.00	0.00	-419.41		Start Drop -2.00
4879.18	0.00	0.00	4838.00	-459.41	196.89	2.00	180.00	-459.41		Start 1914.05 hold at 4879.18 MD
6793.23	0.00	0.00	6752.05	-459.41	196.89	0.00	0.00	-459.41		Start DLS 10.00 TFO 360.00
7689.69	89.65	360.00	7325.00	110.00	196.89	10.00	360.00	110.00		Start 5007.51 hold at 7689.69 MD
12697.19	89.65	360.00	7356.00	5117.41	196.89	0.00	0.00	5117.41	PBHL_BADDING 2N-26HZ	TD at 12697.19
DESIGN TARGET DETAILS										
Name	TVD	+N/-S	+E/-W	Northing	Easting	Latitude	Longitude	Shape		
PBHL	7356.00	5117.41	196.89	1286388.00	3212228.24	40.1170350	-104.7411460	Point		

#### PROJECT DETAILS: COLORADO NORTHERN ZONE - 83

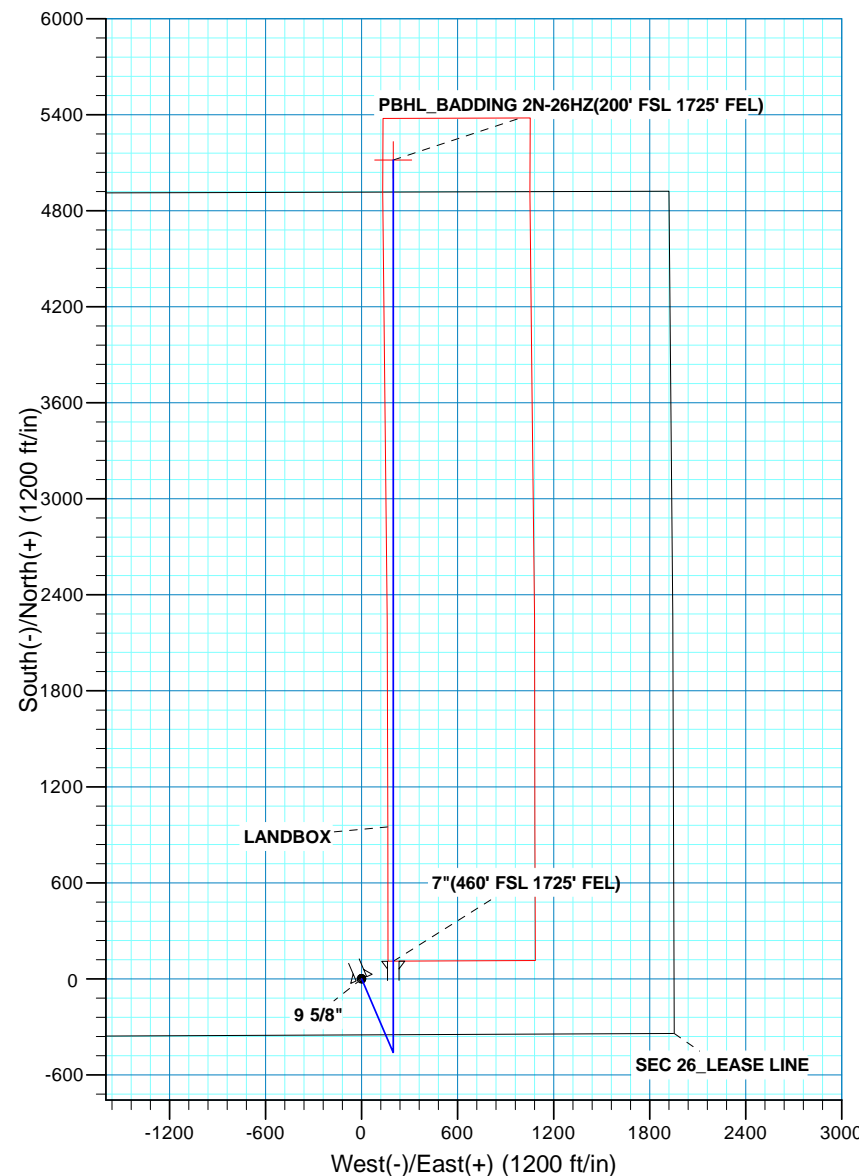
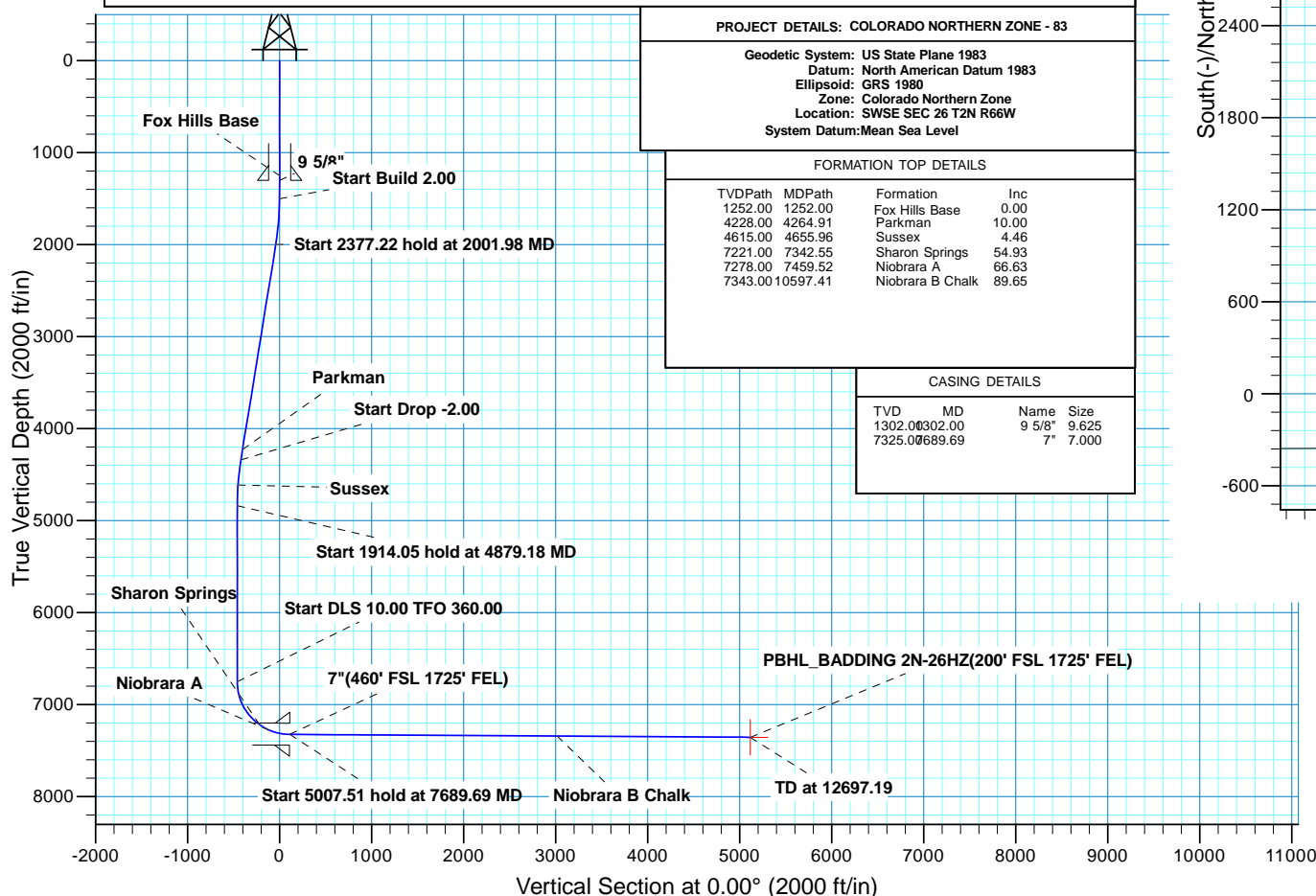
Geodetic System: US State Plane 1983  
 Datum: North American Datum 1983  
 Ellipsoid: GRS 1980  
 Zone: Colorado Northern Zone  
 Location: SWSE SEC 26 T2N R66W  
 System Datum: Mean Sea Level

#### FORMATION TOP DETAILS

TVDPath	MDPath	Formation	Inc
1252.00	1252.00	Fox Hills Base	0.00
4228.00	4264.91	Parkman	10.00
4615.00	4655.96	Sussex	4.46
7221.00	7342.55	Sharon Springs	54.93
7278.00	7459.52	Niobrara A	66.63
7343.00	10597.41	Niobrara B Chalk	89.65

#### CASING DETAILS

TVD	MD	Name	Size
1302.00	302.00	9 5/8"	9.625
7325.00	689.69	7"	7.000





**Scientific Drilling**

# **US ROCKIES REGION PLANNING**

**COLORADO NORTHERN ZONE - 83**

**BADDING 15-26HZ**

**BADDING 2N-26HZ**

**OH**

**Plan: PLAN #1 PRELIMINARY**

## **Standard Planning Report**

**24 September, 2013**

<b>Database:</b>	Denver Sales Office	<b>Local Co-ordinate Reference:</b>	Well BADDING 2N-26HZ
<b>Company:</b>	US ROCKIES REGION PLANNING	<b>TVD Reference:</b>	GL 5113' & KB 17' @ 5130.00ft (ASSUMED)
<b>Project:</b>	COLORADO NORTHERN ZONE - 83	<b>MD Reference:</b>	GL 5113' & KB 17' @ 5130.00ft (ASSUMED)
<b>Site:</b>	BADDING 15-26HZ	<b>North Reference:</b>	True
<b>Well:</b>	BADDING 2N-26HZ	<b>Survey Calculation Method:</b>	Minimum Curvature
<b>Wellbore:</b>	OH		
<b>Design:</b>	PLAN #1 PRELIMINARY		

<b>Project</b>	COLORADO NORTHERN ZONE - 83, KERR MCGEE OIL & GAS ONSHORE LP		
<b>Map System:</b>	US State Plane 1983	<b>System Datum:</b>	Mean Sea Level
<b>Geo Datum:</b>	North American Datum 1983		
<b>Map Zone:</b>	Colorado Northern Zone		

<b>Site</b>	BADDING 15-26HZ, SWSE SEC 26 T2N R66W			
<b>Site Position:</b>		<b>Northing:</b>	1,281,268.67 usft	<b>Latitude:</b> 40.1029870
<b>From:</b>	Lat/Long	<b>Easting:</b>	3,212,023.08 usft	<b>Longitude:</b> -104.7420360
<b>Position Uncertainty:</b>	0.00 ft	<b>Slot Radius:</b>	13.200 in	<b>Grid Convergence:</b> 0.49 °

<b>Well</b>	BADDING 2N-26HZ, 350 FSL 1953 FEL			
<b>Well Position</b>	<b>+N/-S</b>	-0.02 ft	<b>Northing:</b>	1,281,269.10 usft
	<b>+E/-W</b>	52.03 ft	<b>Easting:</b>	3,212,075.11 usft
<b>Position Uncertainty</b>		0.00 ft	<b>Wellhead Elevation:</b>	<b>Ground Level:</b> 5,113.00 ft

<b>Wellbore</b>	OH				
<b>Magnetics</b>	<b>Model Name</b>	<b>Sample Date</b>	<b>Declination (°)</b>	<b>Dip Angle (°)</b>	<b>Field Strength (nT)</b>
	BGGM2013	7/29/2013	8.57	66.73	52,682

<b>Design</b>	PLAN #1 PRELIMINARY			
<b>Audit Notes:</b>				
<b>Version:</b>	<b>Phase:</b>	PLAN	<b>Tie On Depth:</b>	0.00
<b>Vertical Section:</b>	<b>Depth From (TVD) (ft)</b>	<b>+N/-S (ft)</b>	<b>+E/-W (ft)</b>	<b>Direction (°)</b>
	0.00	0.00	0.00	0.00

<b>Plan Sections</b>										
Measured Depth (ft)	Inclination (°)	Azimuth (°)	Vertical Depth (ft)	+N/-S (ft)	+E/-W (ft)	Dogleg Rate (°/100usft)	Build Rate (°/100usft)	Turn Rate (°/100usft)	TFO (°)	Target
0.00	0.00	0.00	0.00	0.00	0.00	0.00	0.00	0.00	0.00	
1,502.00	0.00	0.00	1,502.00	0.00	0.00	0.00	0.00	0.00	0.00	
2,001.98	10.00	156.80	1,999.45	-40.00	17.14	2.00	2.00	0.00	156.80	
4,379.20	10.00	156.80	4,340.55	-419.41	179.75	0.00	0.00	0.00	0.00	
4,879.18	0.00	0.00	4,838.00	-459.41	196.89	2.00	-2.00	0.00	180.00	
6,793.23	0.00	0.00	6,752.05	-459.41	196.89	0.00	0.00	0.00	0.00	
7,689.69	89.65	360.00	7,325.00	110.00	196.89	10.00	10.00	0.00	360.00	
12,697.19	89.65	360.00	7,356.00	5,117.41	196.89	0.00	0.00	0.00	0.00	PBHL_BADDING 2N-

<b>Database:</b>	Denver Sales Office	<b>Local Co-ordinate Reference:</b>	Well BADDING 2N-26HZ
<b>Company:</b>	US ROCKIES REGION PLANNING	<b>TVD Reference:</b>	GL 5113' & KB 17' @ 5130.00ft (ASSUMED)
<b>Project:</b>	COLORADO NORTHERN ZONE - 83	<b>MD Reference:</b>	GL 5113' & KB 17' @ 5130.00ft (ASSUMED)
<b>Site:</b>	BADDING 15-26HZ	<b>North Reference:</b>	True
<b>Well:</b>	BADDING 2N-26HZ	<b>Survey Calculation Method:</b>	Minimum Curvature
<b>Wellbore:</b>	OH		
<b>Design:</b>	PLAN #1 PRELIMINARY		

Planned Survey									
Measured Depth (ft)	Inclination (°)	Azimuth (°)	Vertical Depth (ft)	+N/-S (ft)	+E/-W (ft)	Vertical Section (ft)	Dogleg Rate (°/100usft)	Build Rate (°/100usft)	Turn Rate (°/100usft)
0.00	0.00	0.00	0.00	0.00	0.00	0.00	0.00	0.00	0.00
100.00	0.00	0.00	100.00	0.00	0.00	0.00	0.00	0.00	0.00
200.00	0.00	0.00	200.00	0.00	0.00	0.00	0.00	0.00	0.00
300.00	0.00	0.00	300.00	0.00	0.00	0.00	0.00	0.00	0.00
400.00	0.00	0.00	400.00	0.00	0.00	0.00	0.00	0.00	0.00
500.00	0.00	0.00	500.00	0.00	0.00	0.00	0.00	0.00	0.00
600.00	0.00	0.00	600.00	0.00	0.00	0.00	0.00	0.00	0.00
700.00	0.00	0.00	700.00	0.00	0.00	0.00	0.00	0.00	0.00
800.00	0.00	0.00	800.00	0.00	0.00	0.00	0.00	0.00	0.00
900.00	0.00	0.00	900.00	0.00	0.00	0.00	0.00	0.00	0.00
1,000.00	0.00	0.00	1,000.00	0.00	0.00	0.00	0.00	0.00	0.00
1,100.00	0.00	0.00	1,100.00	0.00	0.00	0.00	0.00	0.00	0.00
1,200.00	0.00	0.00	1,200.00	0.00	0.00	0.00	0.00	0.00	0.00
1,252.00	0.00	0.00	1,252.00	0.00	0.00	0.00	0.00	0.00	0.00
<b>Fox Hills Base</b>									
1,300.00	0.00	0.00	1,300.00	0.00	0.00	0.00	0.00	0.00	0.00
1,302.00	0.00	0.00	1,302.00	0.00	0.00	0.00	0.00	0.00	0.00
<b>9 5/8"</b>									
1,400.00	0.00	0.00	1,400.00	0.00	0.00	0.00	0.00	0.00	0.00
1,500.00	0.00	0.00	1,500.00	0.00	0.00	0.00	0.00	0.00	0.00
1,502.00	0.00	0.00	1,502.00	0.00	0.00	0.00	0.00	0.00	0.00
<b>Start Build 2.00</b>									
1,600.00	1.96	156.80	1,599.98	-1.54	0.66	-1.54	2.00	2.00	0.00
1,700.00	3.96	156.80	1,699.84	-6.29	2.69	-6.29	2.00	2.00	0.00
1,800.00	5.96	156.80	1,799.46	-14.23	6.10	-14.23	2.00	2.00	0.00
1,900.00	7.96	156.80	1,898.72	-25.37	10.87	-25.37	2.00	2.00	0.00
2,000.00	9.96	156.80	1,997.50	-39.68	17.01	-39.68	2.00	2.00	0.00
2,001.98	10.00	156.80	1,999.45	-40.00	17.14	-40.00	2.00	2.00	0.00
<b>Start 2377.22 hold at 2001.98 MD</b>									
2,100.00	10.00	156.80	2,095.98	-55.64	23.85	-55.64	0.00	0.00	0.00
2,200.00	10.00	156.80	2,194.46	-71.60	30.69	-71.60	0.00	0.00	0.00
2,300.00	10.00	156.80	2,292.94	-87.56	37.53	-87.56	0.00	0.00	0.00
2,400.00	10.00	156.80	2,391.42	-103.53	44.37	-103.53	0.00	0.00	0.00
2,500.00	10.00	156.80	2,489.90	-119.49	51.21	-119.49	0.00	0.00	0.00
2,600.00	10.00	156.80	2,588.38	-135.45	58.05	-135.45	0.00	0.00	0.00
2,700.00	10.00	156.80	2,686.86	-151.41	64.89	-151.41	0.00	0.00	0.00
2,800.00	10.00	156.80	2,785.34	-167.37	71.73	-167.37	0.00	0.00	0.00
2,900.00	10.00	156.80	2,883.82	-183.33	78.57	-183.33	0.00	0.00	0.00
3,000.00	10.00	156.80	2,982.30	-199.29	85.41	-199.29	0.00	0.00	0.00
3,100.00	10.00	156.80	3,080.79	-215.25	92.25	-215.25	0.00	0.00	0.00
3,200.00	10.00	156.80	3,179.27	-231.21	99.09	-231.21	0.00	0.00	0.00
3,300.00	10.00	156.80	3,277.75	-247.17	105.93	-247.17	0.00	0.00	0.00
3,400.00	10.00	156.80	3,376.23	-263.13	112.77	-263.13	0.00	0.00	0.00
3,500.00	10.00	156.80	3,474.71	-279.09	119.61	-279.09	0.00	0.00	0.00
3,600.00	10.00	156.80	3,573.19	-295.05	126.45	-295.05	0.00	0.00	0.00
3,700.00	10.00	156.80	3,671.67	-311.01	133.29	-311.01	0.00	0.00	0.00
3,800.00	10.00	156.80	3,770.15	-326.97	140.13	-326.97	0.00	0.00	0.00
3,900.00	10.00	156.80	3,868.63	-342.93	146.97	-342.93	0.00	0.00	0.00
4,000.00	10.00	156.80	3,967.11	-358.89	153.81	-358.89	0.00	0.00	0.00
4,100.00	10.00	156.80	4,065.59	-374.85	160.65	-374.85	0.00	0.00	0.00
4,200.00	10.00	156.80	4,164.08	-390.81	167.49	-390.81	0.00	0.00	0.00
4,264.91	10.00	156.80	4,228.00	-401.17	171.93	-401.17	0.00	0.00	0.00
<b>Parkman</b>									
4,300.00	10.00	156.80	4,262.56	-406.77	174.33	-406.77	0.00	0.00	0.00

<b>Database:</b>	Denver Sales Office	<b>Local Co-ordinate Reference:</b>	Well BADDING 2N-26HZ
<b>Company:</b>	US ROCKIES REGION PLANNING	<b>TVD Reference:</b>	GL 5113' & KB 17' @ 5130.00ft (ASSUMED)
<b>Project:</b>	COLORADO NORTHERN ZONE - 83	<b>MD Reference:</b>	GL 5113' & KB 17' @ 5130.00ft (ASSUMED)
<b>Site:</b>	BADDING 15-26HZ	<b>North Reference:</b>	True
<b>Well:</b>	BADDING 2N-26HZ	<b>Survey Calculation Method:</b>	Minimum Curvature
<b>Wellbore:</b>	OH		
<b>Design:</b>	PLAN #1 PRELIMINARY		

Planned Survey									
Measured Depth (ft)	Inclination (°)	Azimuth (°)	Vertical Depth (ft)	+N/-S (ft)	+E/-W (ft)	Vertical Section (ft)	Dogleg Rate (°/100usft)	Build Rate (°/100usft)	Turn Rate (°/100usft)
4,379.20	10.00	156.80	4,340.55	-419.41	179.75	-419.41	0.00	0.00	0.00
<b>Start Drop -2.00</b>									
4,400.00	9.58	156.80	4,361.05	-422.66	181.14	-422.66	2.00	-2.00	0.00
4,500.00	7.58	156.80	4,459.92	-436.38	187.02	-436.38	2.00	-2.00	0.00
4,600.00	5.58	156.80	4,559.26	-446.92	191.54	-446.92	2.00	-2.00	0.00
4,655.96	4.46	156.80	4,615.00	-451.42	193.47	-451.42	2.00	-2.00	0.00
<b>Sussex</b>									
4,700.00	3.58	156.80	4,658.94	-454.26	194.68	-454.26	2.00	-2.00	0.00
4,800.00	1.58	156.80	4,758.83	-458.40	196.46	-458.40	2.00	-2.00	0.00
4,879.18	0.00	0.00	4,838.00	-459.41	196.89	-459.41	2.00	-2.00	0.00
<b>Start 1914.05 hold at 4879.18 MD</b>									
4,900.00	0.00	0.00	4,858.82	-459.41	196.89	-459.41	0.00	0.00	0.00
5,000.00	0.00	0.00	4,958.82	-459.41	196.89	-459.41	0.00	0.00	0.00
5,100.00	0.00	0.00	5,058.82	-459.41	196.89	-459.41	0.00	0.00	0.00
5,200.00	0.00	0.00	5,158.82	-459.41	196.89	-459.41	0.00	0.00	0.00
5,300.00	0.00	0.00	5,258.82	-459.41	196.89	-459.41	0.00	0.00	0.00
5,400.00	0.00	0.00	5,358.82	-459.41	196.89	-459.41	0.00	0.00	0.00
5,500.00	0.00	0.00	5,458.82	-459.41	196.89	-459.41	0.00	0.00	0.00
5,600.00	0.00	0.00	5,558.82	-459.41	196.89	-459.41	0.00	0.00	0.00
5,700.00	0.00	0.00	5,658.82	-459.41	196.89	-459.41	0.00	0.00	0.00
5,800.00	0.00	0.00	5,758.82	-459.41	196.89	-459.41	0.00	0.00	0.00
5,900.00	0.00	0.00	5,858.82	-459.41	196.89	-459.41	0.00	0.00	0.00
6,000.00	0.00	0.00	5,958.82	-459.41	196.89	-459.41	0.00	0.00	0.00
6,100.00	0.00	0.00	6,058.82	-459.41	196.89	-459.41	0.00	0.00	0.00
6,200.00	0.00	0.00	6,158.82	-459.41	196.89	-459.41	0.00	0.00	0.00
6,300.00	0.00	0.00	6,258.82	-459.41	196.89	-459.41	0.00	0.00	0.00
6,400.00	0.00	0.00	6,358.82	-459.41	196.89	-459.41	0.00	0.00	0.00
6,500.00	0.00	0.00	6,458.82	-459.41	196.89	-459.41	0.00	0.00	0.00
6,600.00	0.00	0.00	6,558.82	-459.41	196.89	-459.41	0.00	0.00	0.00
6,700.00	0.00	0.00	6,658.82	-459.41	196.89	-459.41	0.00	0.00	0.00
6,793.23	0.00	0.00	6,752.05	-459.41	196.89	-459.41	0.00	0.00	0.00
<b>Start DLS 10.00 TFO 360.00</b>									
6,800.00	0.68	360.00	6,758.82	-459.37	196.89	-459.37	10.00	10.00	0.00
6,900.00	10.68	360.00	6,858.20	-449.49	196.89	-449.49	10.00	10.00	0.00
7,000.00	20.68	360.00	6,954.36	-422.50	196.89	-422.50	10.00	10.00	0.00
7,100.00	30.68	360.00	7,044.37	-379.23	196.89	-379.23	10.00	10.00	0.00
7,200.00	40.68	360.00	7,125.50	-320.98	196.89	-320.98	10.00	10.00	0.00
7,300.00	50.68	360.00	7,195.28	-249.53	196.89	-249.53	10.00	10.00	0.00
7,342.55	54.93	360.00	7,221.00	-215.64	196.89	-215.64	10.00	10.00	0.00
<b>Sharon Springs</b>									
7,400.00	60.68	360.00	7,251.60	-167.05	196.89	-167.05	10.00	10.00	0.00
7,459.52	66.63	360.00	7,278.00	-113.74	196.89	-113.74	10.00	10.00	0.00
<b>Niobrara A</b>									
7,500.00	70.68	360.00	7,292.73	-76.04	196.89	-76.04	10.00	10.00	0.00
7,600.00	80.68	360.00	7,317.44	20.73	196.89	20.73	10.00	10.00	0.00
7,689.69	89.65	360.00	7,325.00	110.01	196.89	110.01	10.00	10.00	0.00
<b>Start 5007.51 hold at 7689.69 MD - 7"(460' FSL 1725' FEL)</b>									
7,700.00	89.65	360.00	7,325.06	120.32	196.89	120.32	0.00	0.00	0.00
7,800.00	89.65	360.00	7,325.68	220.31	196.89	220.31	0.00	0.00	0.00
7,900.00	89.65	360.00	7,326.30	320.31	196.89	320.31	0.00	0.00	0.00
8,000.00	89.65	360.00	7,326.92	420.31	196.89	420.31	0.00	0.00	0.00
8,100.00	89.65	360.00	7,327.54	520.31	196.89	520.31	0.00	0.00	0.00
8,200.00	89.65	360.00	7,328.16	620.31	196.89	620.31	0.00	0.00	0.00

<b>Database:</b>	Denver Sales Office	<b>Local Co-ordinate Reference:</b>	Well BADDING 2N-26HZ
<b>Company:</b>	US ROCKIES REGION PLANNING	<b>TVD Reference:</b>	GL 5113' & KB 17' @ 5130.00ft (ASSUMED)
<b>Project:</b>	COLORADO NORTHERN ZONE - 83	<b>MD Reference:</b>	GL 5113' & KB 17' @ 5130.00ft (ASSUMED)
<b>Site:</b>	BADDING 15-26HZ	<b>North Reference:</b>	True
<b>Well:</b>	BADDING 2N-26HZ	<b>Survey Calculation Method:</b>	Minimum Curvature
<b>Wellbore:</b>	OH		
<b>Design:</b>	PLAN #1 PRELIMINARY		

Planned Survey									
Measured Depth (ft)	Inclination (°)	Azimuth (°)	Vertical Depth (ft)	+N/-S (ft)	+E/-W (ft)	Vertical Section (ft)	Dogleg Rate (°/100usft)	Build Rate (°/100usft)	Turn Rate (°/100usft)
8,300.00	89.65	360.00	7,328.78	720.30	196.89	720.30	0.00	0.00	0.00
8,400.00	89.65	360.00	7,329.40	820.30	196.89	820.30	0.00	0.00	0.00
8,500.00	89.65	360.00	7,330.01	920.30	196.89	920.30	0.00	0.00	0.00
8,600.00	89.65	360.00	7,330.63	1,020.30	196.89	1,020.30	0.00	0.00	0.00
8,700.00	89.65	360.00	7,331.25	1,120.30	196.89	1,120.30	0.00	0.00	0.00
8,800.00	89.65	360.00	7,331.87	1,220.29	196.89	1,220.29	0.00	0.00	0.00
8,900.00	89.65	360.00	7,332.49	1,320.29	196.89	1,320.29	0.00	0.00	0.00
9,000.00	89.65	360.00	7,333.11	1,420.29	196.89	1,420.29	0.00	0.00	0.00
9,100.00	89.65	360.00	7,333.73	1,520.29	196.89	1,520.29	0.00	0.00	0.00
9,200.00	89.65	360.00	7,334.35	1,620.29	196.89	1,620.29	0.00	0.00	0.00
9,300.00	89.65	360.00	7,334.97	1,720.29	196.89	1,720.29	0.00	0.00	0.00
9,400.00	89.65	360.00	7,335.59	1,820.28	196.89	1,820.28	0.00	0.00	0.00
9,500.00	89.65	360.00	7,336.21	1,920.28	196.89	1,920.28	0.00	0.00	0.00
9,600.00	89.65	360.00	7,336.83	2,020.28	196.89	2,020.28	0.00	0.00	0.00
9,700.00	89.65	360.00	7,337.44	2,120.28	196.89	2,120.28	0.00	0.00	0.00
9,800.00	89.65	360.00	7,338.06	2,220.28	196.89	2,220.28	0.00	0.00	0.00
9,900.00	89.65	360.00	7,338.68	2,320.27	196.89	2,320.27	0.00	0.00	0.00
10,000.00	89.65	360.00	7,339.30	2,420.27	196.89	2,420.27	0.00	0.00	0.00
10,100.00	89.65	360.00	7,339.92	2,520.27	196.89	2,520.27	0.00	0.00	0.00
10,200.00	89.65	360.00	7,340.54	2,620.27	196.89	2,620.27	0.00	0.00	0.00
10,300.00	89.65	360.00	7,341.16	2,720.27	196.89	2,720.27	0.00	0.00	0.00
10,400.00	89.65	360.00	7,341.78	2,820.26	196.89	2,820.26	0.00	0.00	0.00
10,500.00	89.65	360.00	7,342.40	2,920.26	196.89	2,920.26	0.00	0.00	0.00
10,597.41	89.65	360.00	7,343.00	3,017.67	196.89	3,017.67	0.00	0.00	0.00
<b>Niobrara B Chalk</b>									
10,600.00	89.65	360.00	7,343.02	3,020.26	196.89	3,020.26	0.00	0.00	0.00
10,700.00	89.65	360.00	7,343.64	3,120.26	196.89	3,120.26	0.00	0.00	0.00
10,800.00	89.65	360.00	7,344.25	3,220.26	196.89	3,220.26	0.00	0.00	0.00
10,900.00	89.65	360.00	7,344.87	3,320.25	196.89	3,320.25	0.00	0.00	0.00
11,000.00	89.65	360.00	7,345.49	3,420.25	196.89	3,420.25	0.00	0.00	0.00
11,100.00	89.65	360.00	7,346.11	3,520.25	196.89	3,520.25	0.00	0.00	0.00
11,200.00	89.65	360.00	7,346.73	3,620.25	196.89	3,620.25	0.00	0.00	0.00
11,300.00	89.65	360.00	7,347.35	3,720.25	196.89	3,720.25	0.00	0.00	0.00
11,400.00	89.65	360.00	7,347.97	3,820.24	196.89	3,820.24	0.00	0.00	0.00
11,500.00	89.65	360.00	7,348.59	3,920.24	196.89	3,920.24	0.00	0.00	0.00
11,600.00	89.65	360.00	7,349.21	4,020.24	196.89	4,020.24	0.00	0.00	0.00
11,700.00	89.65	360.00	7,349.83	4,120.24	196.89	4,120.24	0.00	0.00	0.00
11,800.00	89.65	360.00	7,350.45	4,220.24	196.89	4,220.24	0.00	0.00	0.00
11,900.00	89.65	360.00	7,351.06	4,320.24	196.89	4,320.24	0.00	0.00	0.00
12,000.00	89.65	360.00	7,351.68	4,420.23	196.89	4,420.23	0.00	0.00	0.00
12,100.00	89.65	360.00	7,352.30	4,520.23	196.89	4,520.23	0.00	0.00	0.00
12,200.00	89.65	360.00	7,352.92	4,620.23	196.89	4,620.23	0.00	0.00	0.00
12,300.00	89.65	360.00	7,353.54	4,720.23	196.89	4,720.23	0.00	0.00	0.00
12,400.00	89.65	360.00	7,354.16	4,820.23	196.89	4,820.23	0.00	0.00	0.00
12,500.00	89.65	360.00	7,354.78	4,920.22	196.89	4,920.22	0.00	0.00	0.00
12,600.00	89.65	360.00	7,355.40	5,020.22	196.89	5,020.22	0.00	0.00	0.00
12,697.19	89.65	360.00	7,356.00	5,117.41	196.89	5,117.41	0.00	0.00	0.00
<b>TD at 12697.19 - PBHL_BADDING 2N-26HZ(200' FSL 1725' FEL)</b>									

<b>Database:</b>	Denver Sales Office	<b>Local Co-ordinate Reference:</b>	Well BADDING 2N-26HZ
<b>Company:</b>	US ROCKIES REGION PLANNING	<b>TVD Reference:</b>	GL 5113' & KB 17' @ 5130.00ft (ASSUMED)
<b>Project:</b>	COLORADO NORTHERN ZONE - 83	<b>MD Reference:</b>	GL 5113' & KB 17' @ 5130.00ft (ASSUMED)
<b>Site:</b>	BADDING 15-26HZ	<b>North Reference:</b>	True
<b>Well:</b>	BADDING 2N-26HZ	<b>Survey Calculation Method:</b>	Minimum Curvature
<b>Wellbore:</b>	OH		
<b>Design:</b>	PLAN #1 PRELIMINARY		

Design Targets									
Target Name	Dip Angle	Dip Dir.	TVD	+N/-S	+E/-W	Northing	Easting	Latitude	Longitude
- hit/miss target	(°)	(°)	(ft)	(ft)	(ft)	(usft)	(usft)		
- Shape									
PBHL_BADDING 2N-26	0.00	0.00	7,356.00	5,117.41	196.89	1,286,387.99	3,212,228.24	40.1170350	-104.7411460
- plan hits target center									
- Point									

Casing Points					
Measured Depth	Vertical Depth	Name		Casing Diameter	Hole Diameter
(ft)	(ft)			(in)	(in)
1,302.00	1,302.00	9 5/8"		9.625	12.250
7,689.69	7,325.00	7"(460' FSL 1725' FEL)		7.000	7.500

Formations						
Measured Depth	Vertical Depth	Name	Lithology	Dip	Dip Direction	
(ft)	(ft)			(°)	(°)	
1,252.00	1,252.00	Fox Hills Base				
4,264.91	4,228.00	Parkman				
4,655.96	4,615.00	Sussex				
7,342.55	7,221.00	Sharon Springs				
7,459.52	7,278.00	Niobrara A				
10,597.41	7,343.00	Niobrara B Chalk				

Plan Annotations					
Measured Depth	Vertical Depth	Local Coordinates			
(ft)	(ft)	+N/-S	+E/-W	Comment	
(ft)	(ft)	(ft)	(ft)		
1,502.00	1,502.00	0.00	0.00	Start Build 2.00	
2,001.98	1,999.45	-40.00	17.14	Start 2377.22 hold at 2001.98 MD	
4,379.20	4,340.55	-419.41	179.75	Start Drop -2.00	
4,879.18	4,838.00	-459.41	196.89	Start 1914.05 hold at 4879.18 MD	
6,793.23	6,752.05	-459.41	196.89	Start DLS 10.00 TFO 360.00	
7,689.69	7,325.00	110.00	196.89	Start 5007.51 hold at 7689.69 MD	
12,697.19	7,356.00	5,117.41	196.89	TD at 12697.19	