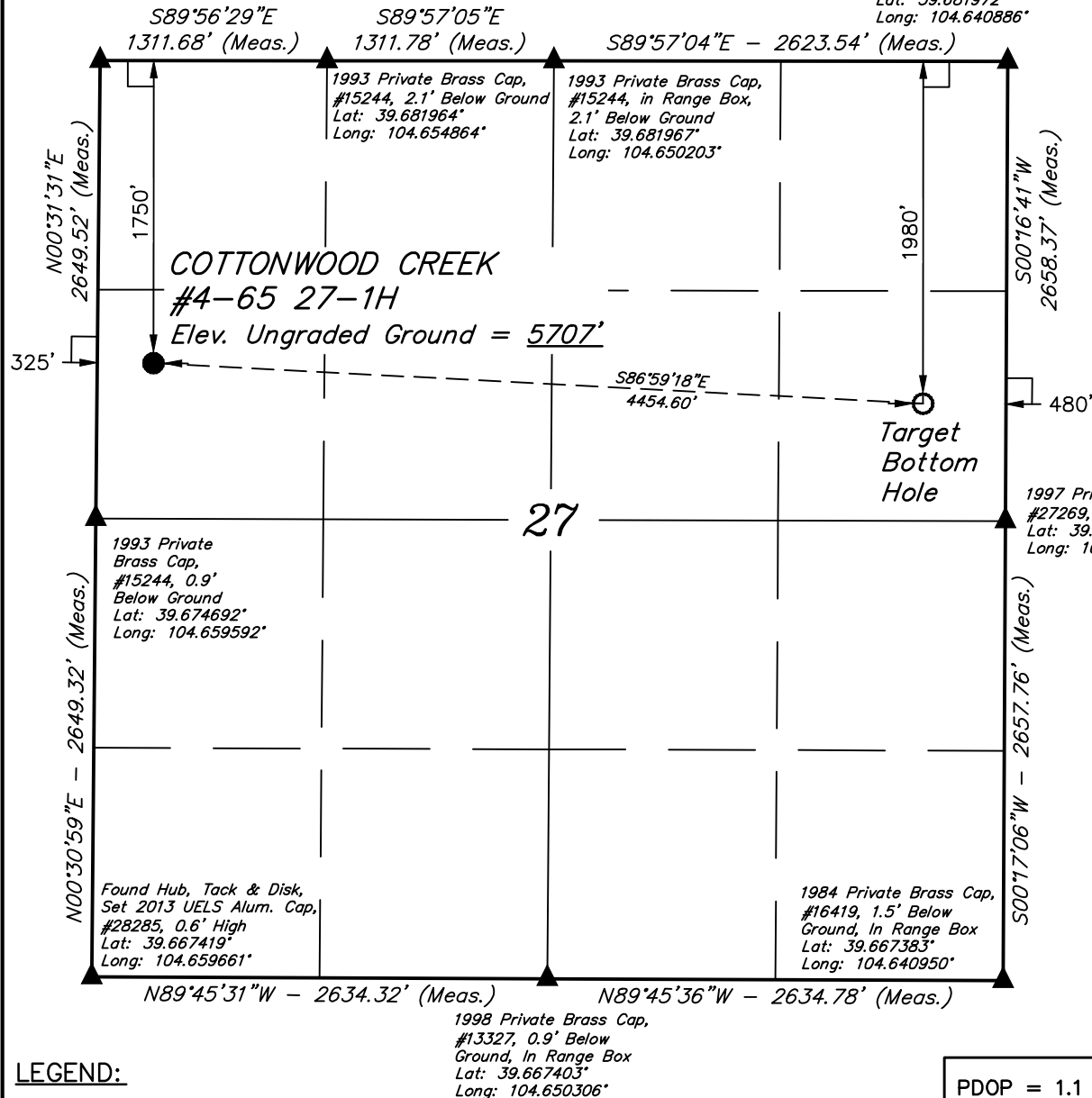


WELL LOCATION PLAT

T4S, R65W, 6th P.M.

1985 Private Brass Cap,
#15649, In Range Box,
2.4' Below Ground
Lat: 39.681961°
Long: 104.659522°

1993 Private Brass Cap,
#15244, 2.1' Below Ground
Lat: 39.681972°
Long: 104.640886°



ConocoPhillips Company

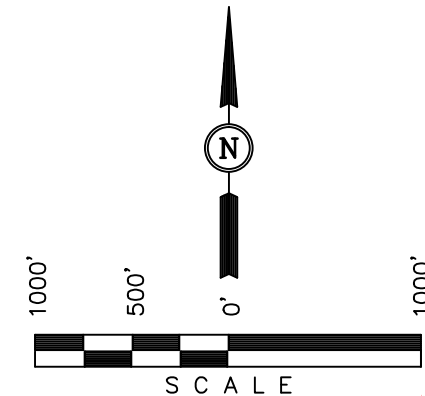
Well location, COTTONWOOD CREEK #4-65 27-1H,
located as shown in the SW 1/4 NW 1/4 of
Section 27, T4S, R65W, 6th P.M. Arapahoe
County, Colorado.

BASIS OF ELEVATION

BENCHMARK 374 LOCATED ON THE SECTION LINE BETWEEN
SECTIONS 12 & 13, T5S, R64W, 6th. P.M., TAKEN FROM 1988
PUBLISHED DATUM BY THE UNITED STATES DEPARTMENT OF
THE INTERIOR, GEOLOGICAL SURVEY AS BEING 6054.61 FEET.

BASIS OF BEARINGS

BASIS OF BEARINGS IS A G.P.S. OBSERVATION.



CERTIFICATION

THIS IS TO CERTIFY THAT THE ABOVE PLAT WAS PREPARED FROM
FIELD NOTES OF ACTUAL SURVEYS MADE BY ME OR UNDER MY
SUPERVISION AND THAT THE SAME ARE TRUE AND CORRECT TO THE
BEST OF MY KNOWLEDGE AND BELIEF.

REGISTERED LAND SURVEYOR
REGISTRATION NO. 28285
STATE OF COLORADO 09-09-13

REVISED: 09-09-13

UINTAH ENGINEERING & LAND SURVEYING
85 SOUTH 200 EAST - VERNAL, UTAH 84078
(435) 789-1017

LEGEND:

- └─┘ = 90° SYMBOL
- = PROPOSED WELL HEAD.
- ▲ = SECTION CORNERS LOCATED.

NAD 83 (TARGET BOTTOM HOLE)	NAD 83 (SURFACE LOCATION)
LATITUDE = 39°40'35.54" (39.676539)	LATITUDE = 39°40'37.78" (39.677161)
LONGITUDE = 104°38'33.41" (104.642614)	LONGITUDE = 104°39'30.29" (104.658414)
NAD 27 (TARGET BOTTOM HOLE)	NAD 27 (SURFACE LOCATION)
LATITUDE = 39°40'35.58" (39.676550)	LATITUDE = 39°40'37.82" (39.677172)
LONGITUDE = 104°38'31.52" (104.642089)	LONGITUDE = 104°39'28.40" (104.657889)

PDOP = 1.1

SCALE 1" = 1000'	DATE SURVEYED: 07-15-13	DATE DRAWN: 07-17-13
PARTY J.H. C.M. A.D.	REFERENCES G.L.O. PLAT	
WEATHER HOT	FILE ConocoPhillips Company	

SECTION BREAKDOWN T4S, R65W, 6th P.M.

1985 Private Brass Cap,
#15649, In Range Box,
2.4' Below Ground
Lat: 39.681961°
Long: 104.659522°

1993 Private Brass Cap,
#15244, 2.1' Below Ground
Lat: 39.681972°
Long: 104.640886°

ConocoPhillips Company

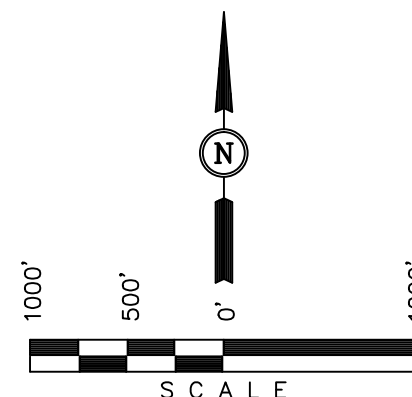
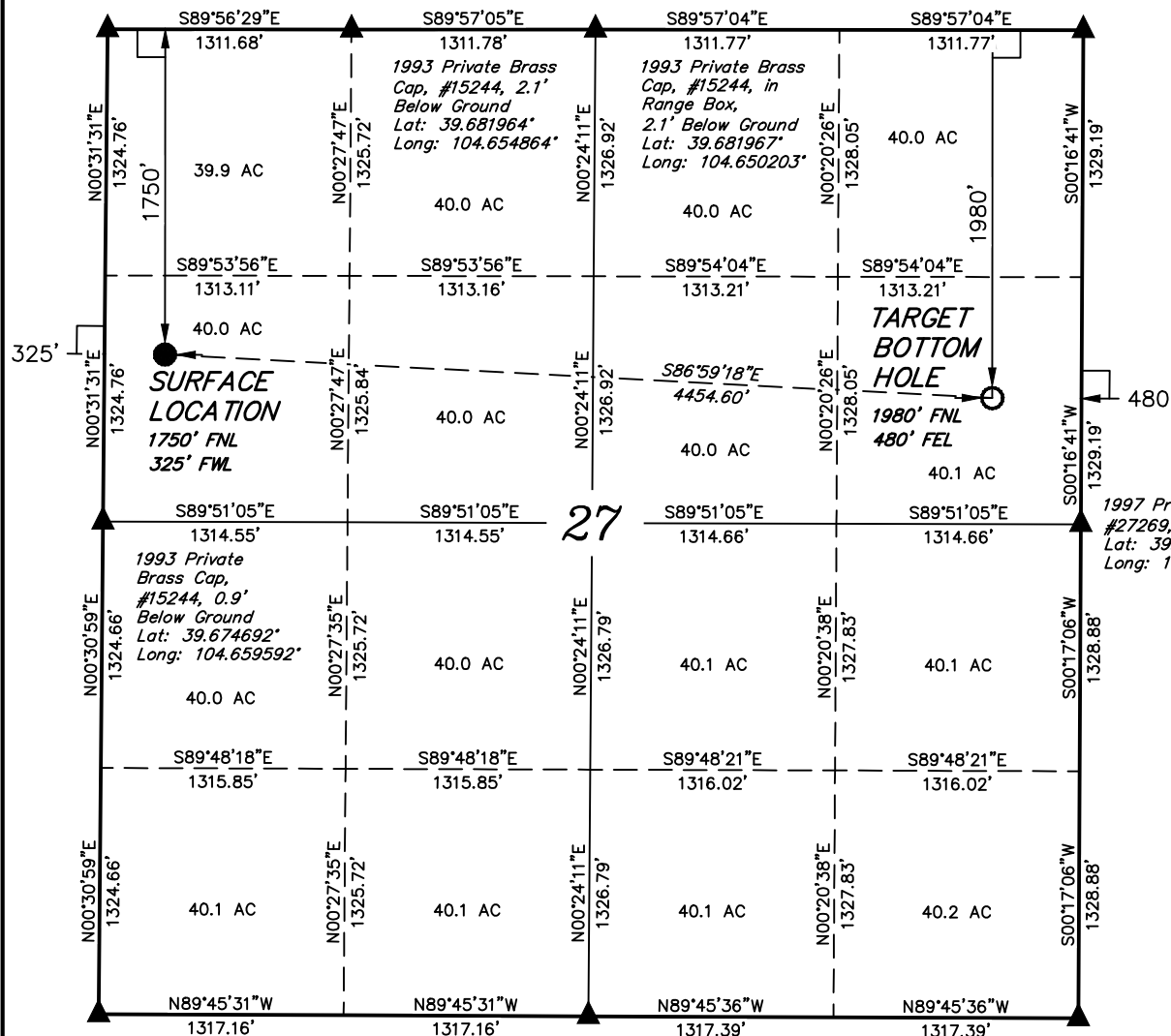
Well location, COTTONWOOD CREEK #4-65 27-1H,
located as shown in the SW 1/4 NW 1/4 of
Section 27, T4S, R65W, 6th P.M. Arapahoe
County, Colorado.

BASIS OF ELEVATION

BENCHMARK 374 LOCATED ON THE SECTION LINE BETWEEN
SECTIONS 12 & 13, T5S, R64W, 6th. P.M., TAKEN FROM 1988
PUBLISHED DATUM BY THE UNITED STATES DEPARTMENT OF
THE INTERIOR, GEOLOGICAL SURVEY AS BEING 6054.61 FEET.

BASIS OF BEARINGS

BASIS OF BEARINGS IS A G.P.S. OBSERVATION.



CERTIFICATION

THIS IS TO CERTIFY THAT THE ABOVE PLAT WAS PREPARED FROM
FIELD NOTES OF ACTUAL SURVEYS MADE BY ME OR UNDER MY
SUPERVISION AND THAT THE SAME ARE TRUE AND CORRECT TO THE
BEST OF MY KNOWLEDGE AND BELIEF.

REGISTERED LAND SURVEYOR
REGISTRATION NO. 28285
STATE OF COLORADO

REVISED: 09-09-13

UINTAH ENGINEERING & LAND SURVEYING
85 SOUTH 200 EAST - VERNAL, UTAH 84078
(435) 789-1017

LEGEND:

- └─┘ = 90° SYMBOL
- = PROPOSED WELL HEAD.
- ▲ = SECTION CORNERS LOCATED.

PDOP = 1.1

NAD 83 (TARGET BOTTOM HOLE)	NAD 83 (SURFACE LOCATION)
LATITUDE = 39°40'35.54" (39.676539)	LATITUDE = 39°40'37.78" (39.677161)
LONGITUDE = 104°38'33.41" (104.642614)	LONGITUDE = 104°39'30.29" (104.658414)
NAD 27 (TARGET BOTTOM HOLE)	NAD 27 (SURFACE LOCATION)
LATITUDE = 39°40'35.58" (39.676550)	LATITUDE = 39°40'37.82" (39.677172)
LONGITUDE = 104°38'31.52" (104.642089)	LONGITUDE = 104°39'28.40" (104.657889)

SCALE 1" = 1000'	DATE SURVEYED: 07-15-13	DATE DRAWN: 07-17-13
PARTY J.H. C.M. A.D.	REFERENCES G.L.O. PLAT	
WEATHER HOT	FILE ConocoPhillips Company	