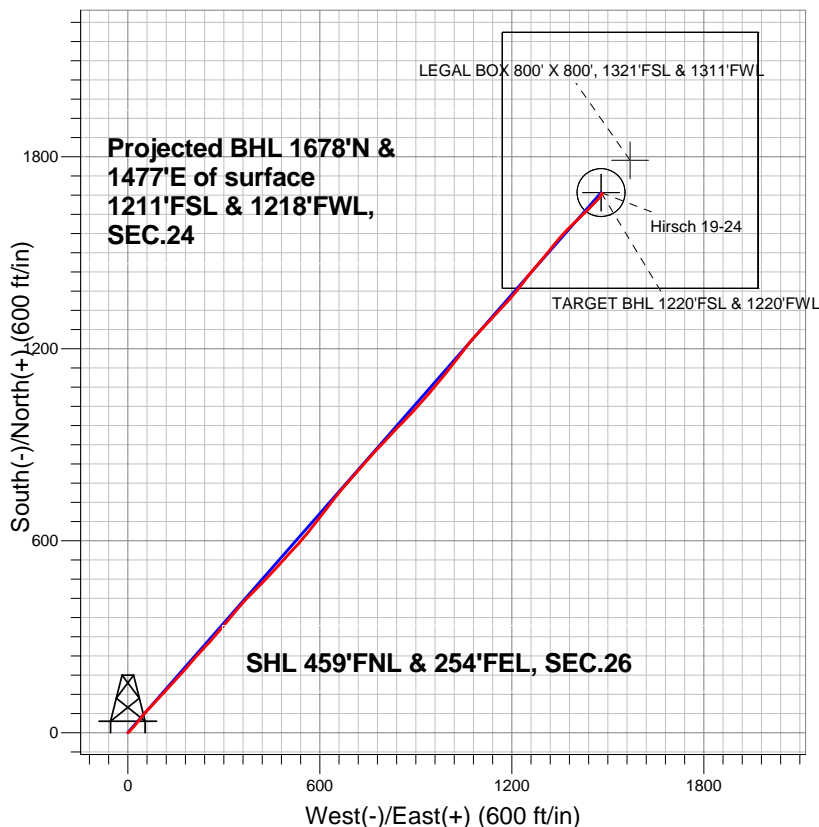
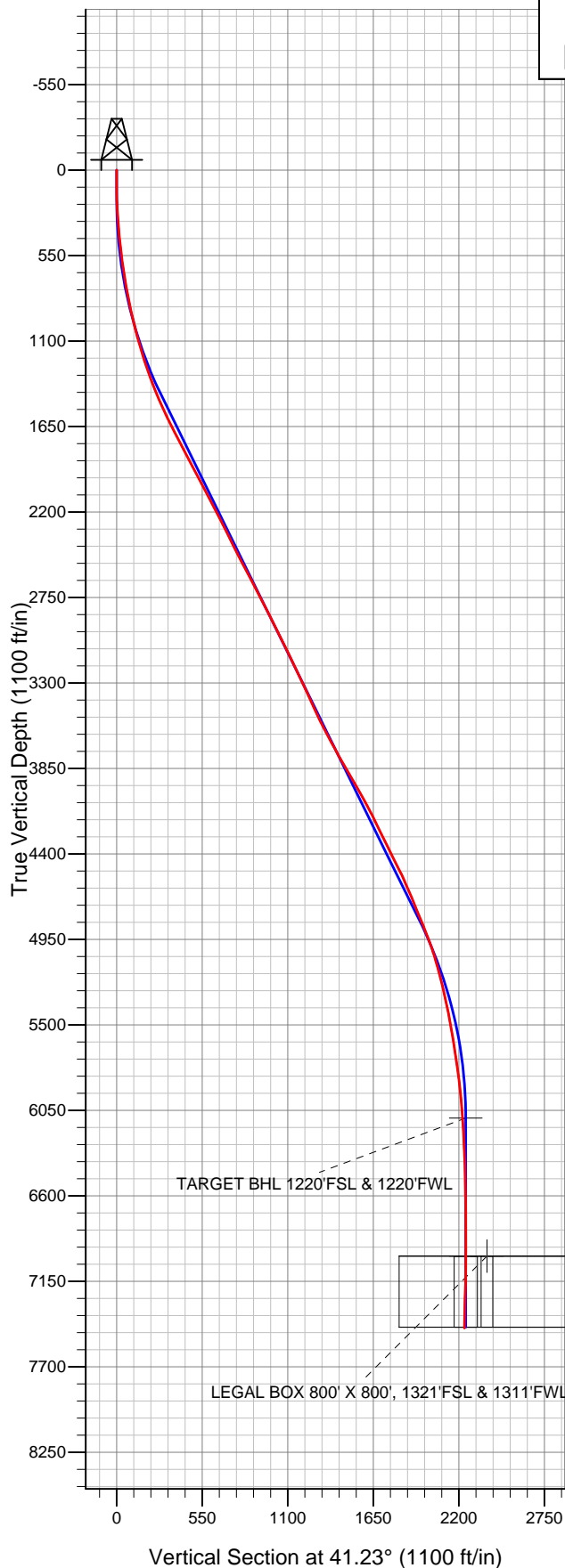


BAYSWATER EXPLORATION & PRODUCTION



LEGEND

- Hirsch 19-24, Wellbore #1, Plan #1 (7-10-12) V0
- Wellbore #1
- Survey #1

Final Survey Plot

Projected Final Survey -
7922'MD & 7451'TVD @ 2235'VS
1.0 deg Inc 208.10 deg AZ

Project: SEC.26-T7N-R67W
Site: Hirsch/Casa Loma 10 Pad Sec.26-T7N-R67W
Well: Hirsch 19-24
Plan: Wellbore #1



Directional

BAYSWATER EXPLORATION & PRODUCTION

SEC.26-T7N-R67W

Hirsch/Casa Loma 10 Pad Sec.26-T7N-R67W

Hirsch 19-24

Wellbore #1

Survey: Survey #1

Standard Survey Report

11 March, 2013

Survey										
	Measured Depth (ft)	Inclination (°)	Azimuth (°)	Vertical Depth (ft)	+N-S (ft)	+E-W (ft)	Vertical Section (ft)	Dogleg Rate (°/100ft)	Build Rate (°/100ft)	Turn Rate (°/100ft)
	0.0	0.00	0.00	0.0	0.0	0.0	0.0	0.00	0.00	0.00
	99.0	0.30	153.10	99.0	-0.2	0.1	-0.1	0.30	0.30	0.00
	186.0	1.80	54.80	186.0	0.4	1.3	1.1	2.15	1.72	-112.99
	277.0	3.10	45.70	276.9	2.9	4.3	5.0	1.49	1.43	-10.00
	368.0	4.50	45.00	367.7	7.1	8.6	11.0	1.54	1.54	-0.77
	459.0	5.80	41.10	458.3	13.1	14.1	19.2	1.48	1.43	-4.29
	550.0	7.40	39.40	548.7	21.1	20.8	29.6	1.77	1.76	-1.87
	641.0	8.60	37.40	638.8	31.1	28.7	42.3	1.35	1.32	-2.20
	722.0	10.30	38.10	718.7	41.6	36.8	55.5	2.10	2.10	0.86
	797.0	11.00	41.10	792.4	52.2	45.7	69.4	1.19	0.93	4.00
	890.0	11.60	43.10	883.6	65.7	57.9	87.6	0.77	0.65	2.15
	984.0	13.20	42.20	975.4	80.6	71.6	107.8	1.71	1.70	-0.96

Company: BAYSWATER EXPLORATION & PRODUCTION
Project: SEC.26-T7N-R67W
Site: Hirsch/Casa Loma 10 Pad Sec.26-T7N-R67W
Well: Hirsch 19-24
Wellbore: Wellbore #1
Design: Wellbore #1

Local Co-ordinate Reference: Well Hirsch 19-24
TVD Reference: WELL @ 4969.0ft (Original Well Elev)
MD Reference: WELL @ 4969.0ft (Original Well Elev)
North Reference: True
Survey Calculation Method: Minimum Curvature
Database: Landmark

Survey

Measured Depth (ft)	Inclination (°)	Azimuth (°)	Vertical Depth (ft)	+N/-S (ft)	+E/-W (ft)	Vertical Section (ft)	Dogleg Rate (°/100ft)	Build Rate (°/100ft)	Turn Rate (°/100ft)
1,078.0	15.00	43.20	1,066.6	97.4	87.1	130.7	1.93	1.91	1.06
1,171.0	16.90	42.90	1,156.0	116.1	104.6	156.2	2.04	2.04	-0.32
1,265.0	18.00	42.00	1,245.7	136.9	123.6	184.4	1.20	1.17	-0.96
1,359.0	20.10	43.90	1,334.5	159.3	144.5	215.1	2.33	2.23	2.02
1,452.0	22.20	41.10	1,421.3	184.1	167.1	248.6	2.51	2.26	-3.01
1,546.0	24.20	40.10	1,507.7	212.2	191.2	285.6	2.17	2.13	-1.06
1,640.0	25.10	42.90	1,593.1	241.6	217.2	324.8	1.57	0.96	2.98
1,733.0	26.80	42.50	1,676.7	271.5	244.8	365.5	1.84	1.83	-0.43
1,827.0	28.70	40.40	1,759.9	304.3	273.7	409.3	2.27	2.02	-2.23
1,921.0	28.50	39.90	1,842.4	338.7	302.8	454.2	0.33	-0.21	-0.53
2,015.0	27.60	39.70	1,925.4	372.6	331.0	498.4	0.96	-0.96	-0.21
2,108.0	26.70	42.40	2,008.2	404.6	358.9	540.9	1.64	-0.97	2.90
2,202.0	27.20	44.80	2,092.0	435.5	388.3	583.4	1.27	0.53	2.55
2,296.0	27.90	44.60	2,175.3	466.4	418.9	626.8	0.75	0.74	-0.21
2,389.0	27.40	42.20	2,257.7	497.7	448.5	669.9	1.31	-0.54	-2.58
2,483.0	26.30	42.70	2,341.5	529.1	477.2	712.4	1.19	-1.17	0.53
2,577.0	26.40	42.00	2,425.8	559.9	505.3	754.1	0.35	0.11	-0.74
2,670.0	27.20	42.00	2,508.8	591.1	533.3	796.0	0.86	0.86	0.00
2,764.0	27.40	39.20	2,592.3	623.8	561.4	839.1	1.38	0.21	-2.98
2,858.0	28.30	38.30	2,675.4	658.0	588.9	883.0	1.06	0.96	-0.96
2,951.0	28.10	37.30	2,757.4	692.8	615.8	926.9	0.55	-0.22	-1.08
3,045.0	26.80	37.80	2,840.8	727.1	642.2	970.1	1.40	-1.38	0.53
3,139.0	26.50	40.10	2,924.8	759.9	668.7	1,012.2	1.14	-0.32	2.45
3,232.0	26.10	40.80	3,008.2	791.3	695.4	1,053.4	0.54	-0.43	0.75
3,326.0	26.60	42.00	3,092.4	822.5	723.0	1,095.1	0.78	0.53	1.28
3,420.0	25.70	41.30	3,176.8	853.5	750.5	1,136.6	1.01	-0.96	-0.74
3,514.0	24.80	42.50	3,261.8	883.3	777.3	1,176.7	1.10	-0.96	1.28
3,607.0	24.70	43.10	3,346.3	911.9	803.8	1,215.6	0.29	-0.11	0.65
3,701.0	24.40	42.90	3,431.8	940.5	830.4	1,254.6	0.33	-0.32	-0.21
3,795.0	25.70	45.50	3,516.9	969.0	858.2	1,294.4	1.81	1.38	2.77
3,888.0	27.80	42.40	3,600.0	999.1	887.2	1,336.2	2.71	2.26	-3.33
3,982.0	28.30	41.70	3,682.9	1,032.0	916.8	1,380.3	0.64	0.53	-0.74
4,076.0	29.40	40.80	3,765.3	1,066.1	946.7	1,425.7	1.26	1.17	-0.96
4,169.0	29.90	39.20	3,846.1	1,101.3	976.2	1,471.7	1.01	0.54	-1.72
4,263.0	30.10	38.10	3,927.5	1,138.0	1,005.6	1,518.6	0.62	0.21	-1.17
4,357.0	29.70	37.60	4,009.0	1,175.0	1,034.4	1,565.4	0.50	-0.43	-0.53
4,450.0	28.30	37.80	4,090.3	1,210.7	1,061.9	1,610.4	1.51	-1.51	0.22
4,544.0	25.90	41.80	4,174.0	1,243.6	1,089.3	1,653.2	3.20	-2.55	4.26
4,638.0	26.20	44.60	4,258.5	1,273.7	1,117.5	1,694.4	1.35	0.32	2.98
4,732.0	26.60	44.10	4,342.7	1,303.6	1,146.7	1,736.2	0.49	0.43	-0.53
4,825.0	26.60	42.20	4,425.8	1,334.0	1,175.2	1,777.8	0.91	0.00	-2.04
4,919.0	26.10	39.90	4,510.1	1,365.4	1,202.6	1,819.5	1.21	-0.53	-2.45
5,013.0	23.70	37.60	4,595.3	1,396.2	1,227.4	1,859.0	2.75	-2.55	-2.45
5,106.0	22.70	38.50	4,680.8	1,425.1	1,250.0	1,895.6	1.14	-1.08	0.97
5,200.0	22.20	39.70	4,767.7	1,453.0	1,272.6	1,931.5	0.72	-0.53	1.28
5,294.0	22.30	40.90	4,854.7	1,480.1	1,295.6	1,967.1	0.49	0.11	1.28
5,387.0	21.10	39.40	4,941.1	1,506.4	1,317.8	2,001.5	1.42	-1.29	-1.61
5,481.0	17.90	38.50	5,029.7	1,530.8	1,337.6	2,032.8	3.42	-3.40	-0.96
5,575.0	15.40	40.10	5,119.7	1,551.6	1,354.6	2,059.7	2.70	-2.66	1.70
5,668.0	14.10	44.80	5,209.7	1,569.1	1,370.5	2,083.4	1.90	-1.40	5.05
5,762.0	13.50	47.60	5,301.0	1,584.6	1,386.7	2,105.7	0.95	-0.64	2.98
5,856.0	11.30	45.90	5,392.8	1,598.4	1,401.4	2,125.8	2.37	-2.34	-1.81
5,950.0	10.10	42.40	5,485.1	1,610.9	1,413.6	2,143.2	1.45	-1.28	-3.72

Company:	BAYSWATER EXPLORATION & PRODUCTION	Local Co-ordinate Reference:	Well Hirsch 19-24
Project:	SEC.26-T7N-R67W	TVD Reference:	WELL @ 4969.0ft (Original Well Elev)
Site:	Hirsch/Casa Loma 10 Pad Sec.26-T7N-R67W	MD Reference:	WELL @ 4969.0ft (Original Well Elev)
Well:	Hirsch 19-24	North Reference:	True
Wellbore:	Wellbore #1	Survey Calculation Method:	Minimum Curvature
Design:	Wellbore #1	Database:	Landmark

Survey									
Measured Depth (ft)	Inclination (°)	Azimuth (°)	Vertical Depth (ft)	+N/-S (ft)	+E/-W (ft)	Vertical Section (ft)	Dogleg Rate (°/100ft)	Build Rate (°/100ft)	Turn Rate (°/100ft)
6,043.0	10.00	47.80	5,576.7	1,622.4	1,425.1	2,159.4	1.02	-0.11	5.81
6,137.0	8.40	48.20	5,669.5	1,632.4	1,436.2	2,174.3	1.70	-1.70	0.43
6,231.0	8.40	43.40	5,762.5	1,642.0	1,446.1	2,188.0	0.75	0.00	-5.11
6,324.0	6.80	40.90	5,854.7	1,651.1	1,454.3	2,200.3	1.76	-1.72	-2.69
6,418.0	6.00	44.80	5,948.1	1,658.8	1,461.5	2,210.7	0.97	-0.85	4.15
6,512.0	4.60	44.80	6,041.7	1,665.0	1,467.6	2,219.4	1.49	-1.49	0.00
6,571.8	3.76	44.91	6,101.4	1,668.0	1,470.6	2,223.8	1.40	-1.40	0.19
TARGET BHL 1220'FSL & 1220'FWL									
6,605.0	3.30	45.00	6,134.4	1,669.5	1,472.1	2,225.8	1.40	-1.40	0.26
6,699.0	2.80	41.10	6,228.3	1,673.1	1,475.5	2,230.8	0.58	-0.53	-4.15
6,793.0	2.20	38.50	6,322.2	1,676.3	1,478.1	2,234.9	0.65	-0.64	-2.77
6,886.0	1.80	30.40	6,415.2	1,678.9	1,480.0	2,238.1	0.53	-0.43	-8.71
6,980.0	1.30	24.10	6,509.1	1,681.2	1,481.2	2,240.6	0.56	-0.53	-6.70
7,074.0	0.90	17.60	6,603.1	1,682.9	1,481.8	2,242.3	0.45	-0.43	-6.91
7,167.0	0.70	4.60	6,696.1	1,684.1	1,482.1	2,243.4	0.29	-0.22	-13.98
7,262.0	0.60	345.40	6,791.1	1,685.2	1,482.0	2,244.2	0.25	-0.11	-20.21
7,355.0	0.50	314.60	6,884.1	1,685.9	1,481.6	2,244.4	0.33	-0.11	-33.12
7,449.0	0.30	147.60	6,978.1	1,686.0	1,481.5	2,244.4	0.85	-0.21	-177.66
7,457.6	0.33	155.20	6,986.7	1,686.0	1,481.5	2,244.4	0.63	0.40	88.05
LEGAL BOX 800' X 800', 1321'FSL & 1311'FWL									
7,457.9	0.34	155.40	6,987.0	1,686.0	1,481.5	2,244.4	0.63	0.43	78.43
TARGET CIRCLE 1220'FSL & 1220'FWL									
7,542.0	0.80	184.20	7,071.1	1,685.2	1,481.5	2,243.8	0.63	0.55	34.24
7,636.0	1.40	216.90	7,165.1	1,683.6	1,480.8	2,242.1	0.90	0.64	34.79
7,730.0	1.60	224.30	7,259.0	1,681.7	1,479.2	2,239.7	0.30	0.21	7.87
7,823.0	1.30	217.40	7,352.0	1,680.0	1,477.6	2,237.3	0.37	-0.32	-7.42
7,922.0	1.00	208.10	7,451.0	1,678.3	1,476.6	2,235.4	0.36	-0.30	-9.39

Checked By: _____ Approved By: _____ Date: _____