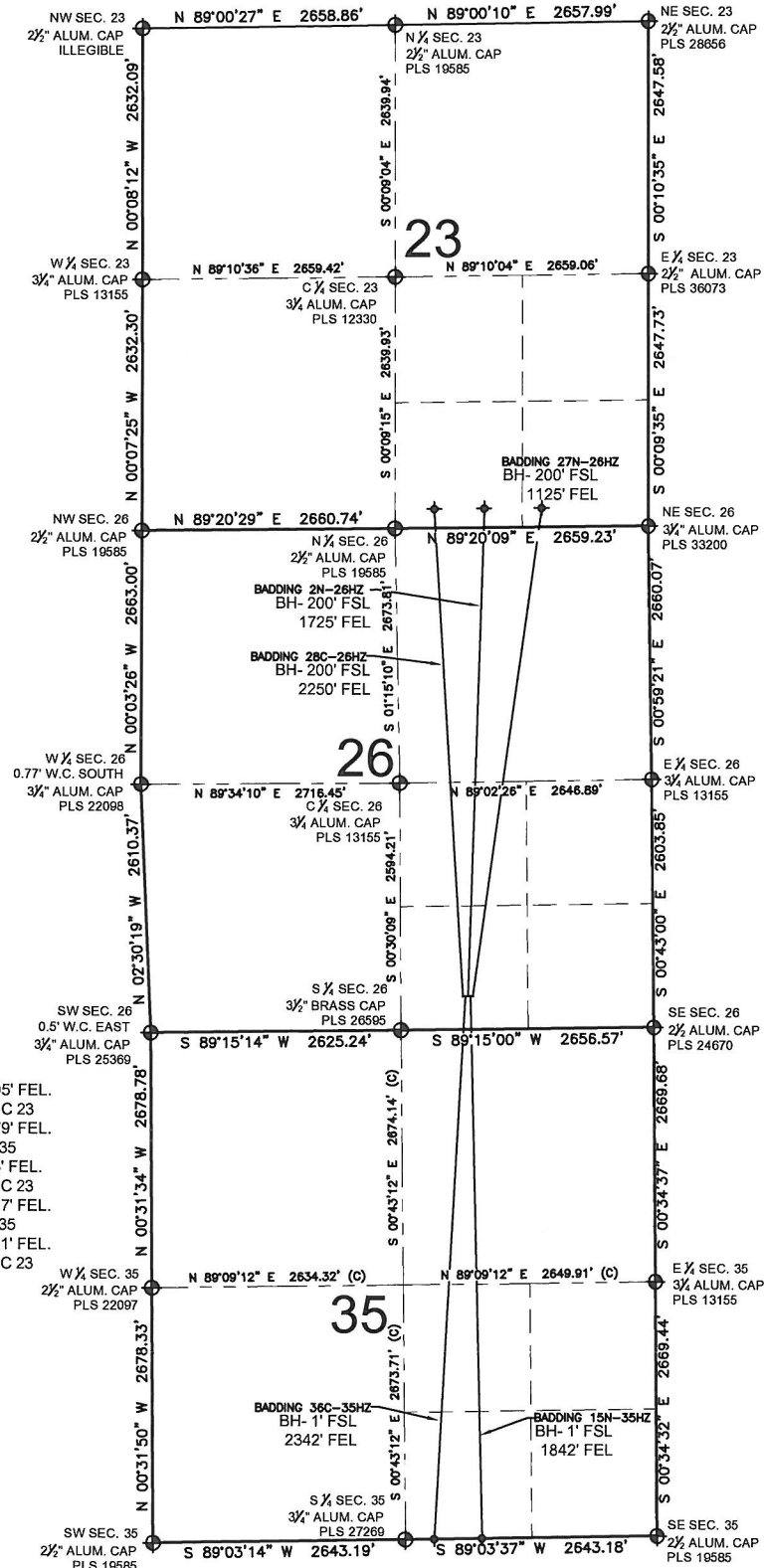


# BADDING 2N-26HZ MULTI-WELL PLAN

SECTION 26, TOWNSHIP 2 NORTH, RANGE 66 WEST, 6TH P.M.



## NOTES:

BADDING 28C-26HZ TO BE AT 350' FSL, 2005' FEL.  
 BOTTOM HOLE AT 200' FSL & 2250' FEL, SEC 23  
 BADDING 36C-35HZ TO BE AT 350' FSL, 1979' FEL.  
 BOTTOM HOLE AT 1' FSL & 2342' FEL, SEC 35  
 BADDING 2N-26HZ TO BE AT 350' FSL, 1953' FEL.  
 BOTTOM HOLE AT 200' FSL & 1725' FEL, SEC 23  
 BADDING 15N-35HZ TO BE AT 350' FSL, 1927' FEL.  
 BOTTOM HOLE AT 1' FSL & 1842' FEL, SEC 35  
 BADDING 27N-26HZ TO BE AT 350' FSL, 1901' FEL.  
 BOTTOM HOLE AT 200' FSL & 1125' FEL, SEC 23

## LEGEND

- ⊕ = EXISTING MONUMENT
- = PROPOSED WELL
- ◆ = BOTTOM HOLE
- ◆ = EXISTING WELL
- BH = BOTTOM HOLE

PREPARED BY:

**PFS** llc

Petroleum Field Services, LLC  
 1801 W. 13th Ave.  
 Denver, CO 80204

KERR-MCGEE OIL & GAS ONSHORE LP

FIELD DATE:  
04-30-13

DRAWING DATE:  
07-22-13

SURFACE LOCATION:

SW 1/4 SE 1/4, SEC. 26, T2N, R66W, 6TH P.M.  
 WELD COUNTY, COLORADO