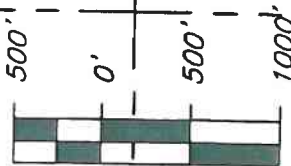


T. 6 S., R. 91 W., 6th P.M.

N 89°47'53" W 2662.44' (Calc.) N 89°33'42" W 2664.96' (Calc.)

OPERATOR: Dejour Energy (USA) Corp.

Found Aluminum Cap
"LS 27925" 2008
Properly Marked



21

Found BLM Aluminum
Cap Properly Marked
2000

Found BLM Brass Cap
Properly Marked 2000

Found BLM Aluminum
Cap Properly Marked
2000

Found BLM Aluminum
Cap Properly Marked
2000

Found BLM Aluminum
Cap Properly Marked
2000

LEASE BOUNDARY (Typ.)

Dejour Federal
PWD 21-6-91

S 81°43' W 896'

1782'

S00°27'15"W, 1313.64'

657'

791'

N00°23'43"E 1313.51'

Found Garfield Co.
Surveyor Brass Cap
Properly Marked 1878

1333.80'

1333.93'

1334.38'

1334.48'

Found Aluminum Cap
"LS 14111 Solar
Country" 1982
Properly Marked

Found BLM Aluminum
Cap Properly Marked
2000

Found Aluminum Cap
"LS 14111 Solar
Country" 1982
Properly Marked

N 89°41'54" W 2668.85'
BASIS OF BEARINGS
Found BLM Aluminum Cap
2000 Properly Marked

NOTES:

- 1: GEODETIC POSITIONS ARE SHOWN IN DECIMAL DEGREES BASED ON NAD83.
- 2: UNITS OF MEASUREMENT: U.S. SURVEY FOOT
- 3: EXISTING GROUND ELEVATION: 7009.5'. PROPOSED PAD ELEVATION: 7008.0'. ELEVATIONS HAVE BEEN DERIVED USING GPS OBSERVATIONS, GEOID 09, NAVD 88.
- 4: ALL TOP AND BOTTOM OF HOLE LOCATIONS ARE MEASURED AT 90° ANGLES FROM SECTION LINES.
- 5: BASIS OF BEARINGS: N 89°41'54" W BETWEEN FOUND MONUMENT AS SHOWN HEREON.
- 6: SEE SHEET 1E FOR EXISTING IMPROVEMENTS LOCATED IN THE VICINITY OF PROPOSED WELL.
- 7: SURFACE USE: RANGELAND
- 8: USGS QUAD MAP: NEW CASTLE
- 9: GPS OPERATOR: KYLE TESKY OBSERVED AN AVERAGE PDOP OF ≤ 3.0 FOR ALL SURVEY MEASUREMENTS DEPICTED ON THIS AND SUBSEQUENT SHEETS. ALL GPS OBSERVATIONS ARE IN COMPLIANCE WITH COGCC RULE NO. 215

LEGEND:

- ⊕ - FOUND MONUMENT AS DESCRIBED HEREON
- - SURFACE HOLE LOCATION (SHL)
- ⊙ - BOTTOM HOLE LOCATION (BHL)

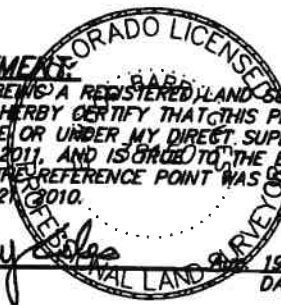
FEDERAL PWD 21-6-91 NAD83

SURFACE HOLE LOCATION	SECTION LINE TIES
LATITUDE = 39.508541°N	FEL = 1782'
LONGITUDE = 107.556063°W	FSL = 791'
SURFACE HOLE LOCATION	SECTION LINE TIES
LATITUDE = 39.508131°N	FEL = 2668'
LONGITUDE = 107.559195°W	FSL = 657'

SURVEYORS STATEMENT

I, ELWOOD BARRY GILES, BEING A REGISTERED LAND SURVEYOR IN THE STATE OF COLORADO, DO HERBY CERTIFY THAT THIS PLAT REPRESENTS A SURVEY PERFORMED BY ME OR UNDER MY DIRECT SUPERVISION BETWEEN APRIL, 2010 & JANUARY, 2011, AND IS CORRECT TO THE BEST OF MY KNOWLEDGE AND BELIEF. THE REFERENCE POINT WAS SET IN THE FIELD AS SHOWN HEREIN APRIL 21, 2010.

Elwood Barry Giles
ELWOOD BARRY GILES
COLORADO LS 38150



SGM INC.
118 W. 6th Street, Suite 200
Glenwood Springs, Co. 81601
(970)945-1004 www.SGM-Inc.com
320 Third St. Meeker, Co. 81641

1" = 1000'

Sheet 1F of 9

PWD 21-6-91

Well Location Plat - Federal PWD 21-6-91
SW¼SE¼, Section 21, T.6S., R.91W., 6TH P.M.

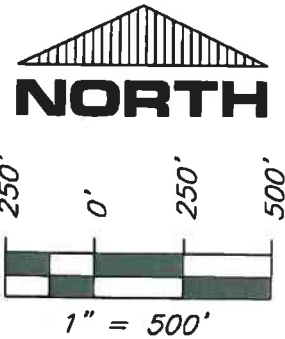
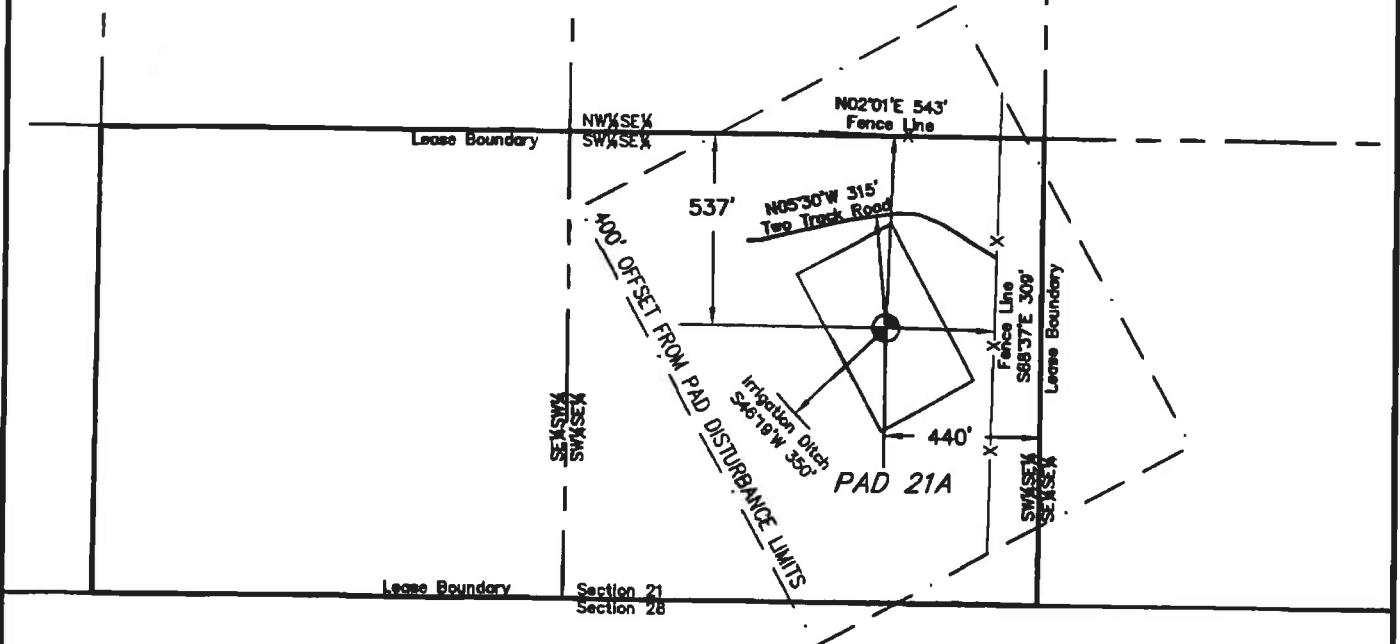
Job# 2010-112.001

Date: 5/12/2011

By: BG

File: APD-SWSE_Sec21

T. 6 S., R. 91 W., 6th P.M.



Dejour Energy (USA) Corp.
Proposed Pad 21-A
Reference Point =
Center of Pad Stake
Lat.: 39.508501°N
Long.: 107.556036°W
NAD83

SURVEYORS STATEMENT:

I, ELWOOD BARRY GILES, BEING A REGISTERED LAND SURVEYOR IN THE STATE OF COLORADO, DO HEREBY CERTIFY THAT THIS PLAT REPRESENTS A SURVEY PERFORMED BY ME OR UNDER MY DIRECT SUPERVISION BETWEEN APRIL, 2010 & JANUARY, 2011, AND IS TRUE TO THE BEST OF MY KNOWLEDGE AND BELIEF. THE REFERENCE POINT WAS STAKED IN THE FIELD AS SHOWN HEREON APRIL 21, 2010.

Elwood Barry Giles
 ELWOOD BARRY GILES
 COLORADO LS 38150

JULY 19, 2011
 DATE

Revised 7/19/11: Update cert to Reference Point staking



SGM INC.
 118 W. 6th Street, Suite 200
 Glenwood Springs, Co. 81601
 (970)945-1004 www.SGM-Inc.com
 320 Third St. Meeker, Co. 81641

1" = 500'

Sheet 1E of 9

Dejour Pad 21-A

Addendum to Well Location Plat for Dejour Energy (USA) Corp. Pad 21-A
 SW1/4, SE1/4 T.6S, R.91W, 6th P.M., Garfield Co., Colorado

Job# 2010-112.001

Date: 6/8/2011

By: BG

File: APD-SWSE_Sec21

Notes:

1. Contact utility line locators before digging. CALL 811

2. Earth work quantities are estimated and should be used at contractors own discretion.

3. Earth work is based on the removal of 6 inches of topsoil on all disturbed areas

4. ROAD SURFACES TO BE FINISHED WITH 6 INCHES OF CLASS 6 ROAD BASE. AFTER INSTALLATION OF PIPELINE

DISTURBED AREA = 4.42 ACRES

CUT SLOPES: 2:1

FILL SLOPES: 2:1

PAD QUANTITIES:

TOTAL CUT = 13288 CUBIC YARDS

TOTAL FILL = 13214 CUBIC YARDS

SPOIL = 74 BANK CUBIC YARDS

SPOIL DOES NOT INCLUDE TOP SOIL

ROAD QUANTITIES:

TOTAL CUT: 1550 CUBIC YARDS

TOTAL FILL: 1100 CUBIC YARDS

SPOIL = 450 BANK CUBIC YARDS

TOP SOIL QUANTITY FOR PAD AND ROAD BASED ON 6 INCH DEPTH: 4204 CUBIC YARDS

CUTTINGS PIT

Capacity with 2'

freeboard = 2843 Bbbs

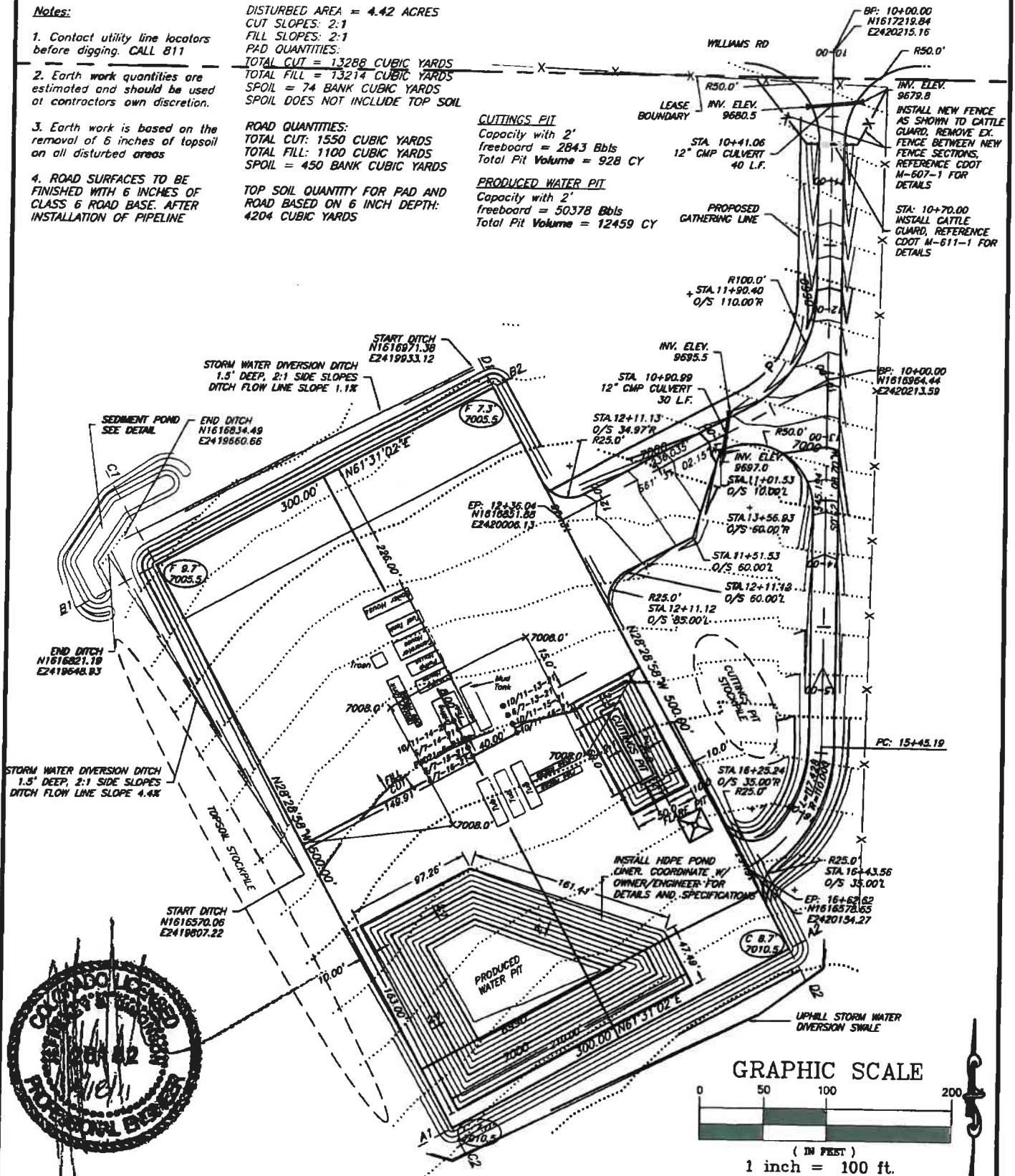
Total Pit Volume = 928 CY

PRODUCED WATER PIT

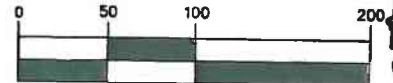
Capacity with 2'

freeboard = 50378 Bbbs

Total Pit Volume = 12459 CY



GRAPHIC SCALE



1 inch = 100 ft.



SGM INC.

118 W. 6th Street, Suite 200
Glenwood Springs, Colorado 81601
(970) 945-1004 (FAX 945-5948)
Aspen, Colorado (970) 925-6727

Scale: 1" = 100'

Sheet 2A of 9

Pad 21A

Construction Layout

SW1/4SE1/4, Section 21, T.6S., R.91W., 6TH P.M.

Job# 2010-112.001

Date: 9.14.11

By: DCS

File: Pad 21ABM.dwg