

T11S, R90W, 6th P.M.

GUNNISON ENERGY CORPORATION

Well location, SPADAFORA 1190 #20-21V, located as shown in H.E.S. #73 of Section 20, T11S, R90W, 6th P.M., Gunnison County, Colorado.

BASIS OF ELEVATION

SPOT ELEVATION LOCATED A ROAD INTERSECTION IN THE NE 1/4 OF SECTION 9, T11S, R90W, 6th P.M. TAKEN FROM THE BULL MOUNTAIN QUADRANGLE, COLORADO, GUNNISON COUNTY, 7.5 MINUTE SERIES (TOPO GRAPHICAL MAP) PUBLISHED BY THE UNITED STATES DEPARTMENT OF THE INTERIOR, GEOLOGICAL SURVEY. SAID ELEVATION IS MARKED AS BEING 7487 FEET.

BASIS OF BEARINGS

BASIS OF BEARINGS IS A G.P.S. OBSERVATION.

LEGEND:

- └─ = 90° SYMBOL
- = PROPOSED WELL HEAD.
- ▲ = SECTION CORNERS LOCATED.

CERTIFICATE

THIS IS TO CERTIFY THAT THE ABOVE PLAT WAS PREPARED FROM FIELD NOTES OF ACTUAL SURVEYS MADE BY ME OR UNDER MY SUPERVISION AND THAT THE SAME ARE TRUE AND CORRECT TO THE BEST OF MY KNOWLEDGE AND BELIEF.

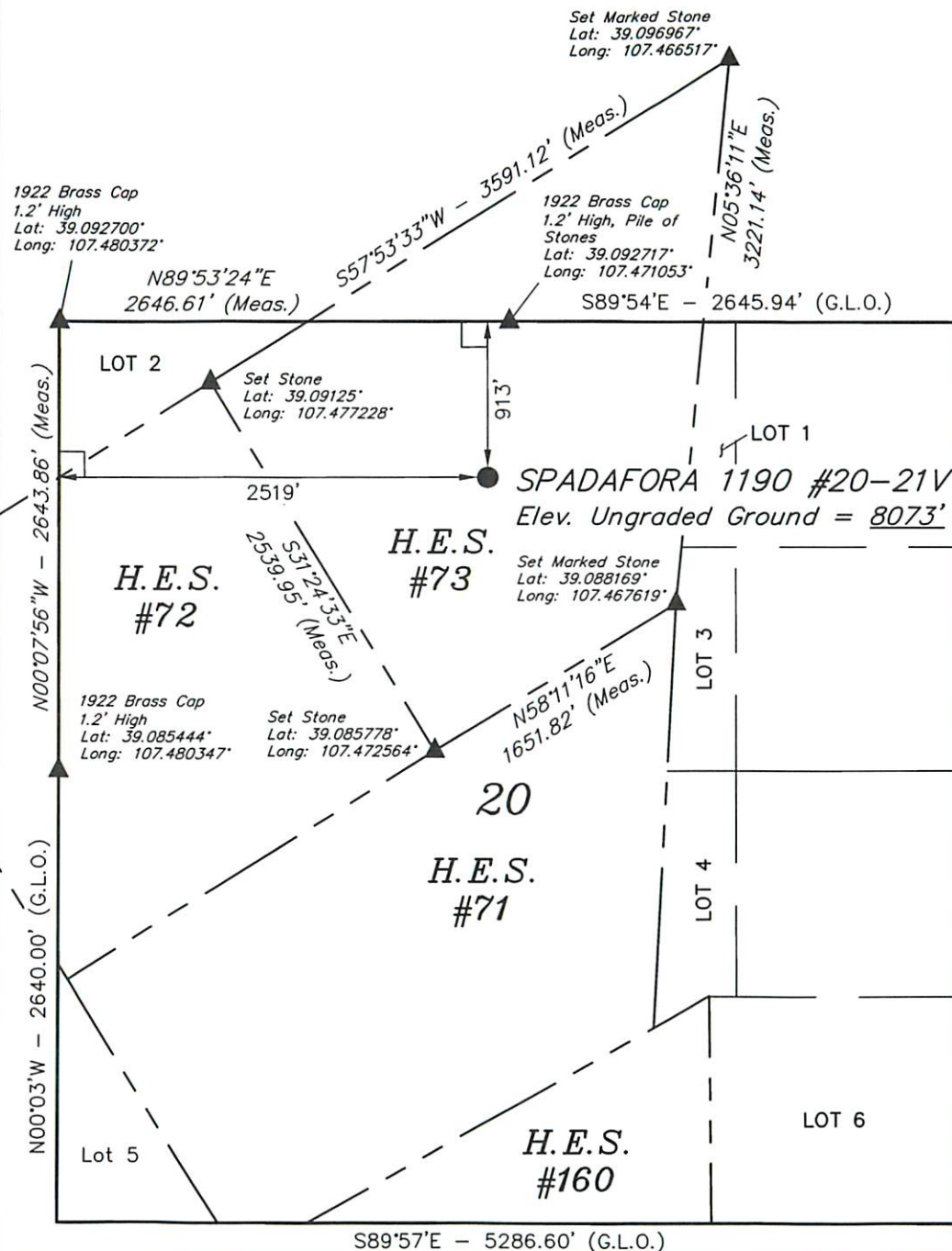
REGISTERED LAND SURVEYOR
REGISTRATION NO. 1790
STATE OF COLORADO

PDOP = 1.6

NAD 83 (SURFACE LOCATION)	
LATITUDE	= 39°05'24.75" (39.090208)
LONGITUDE	= 107°28'17.37" (107.471492)
NAD 27 (SURFACE LOCATION)	
LATITUDE	= 39°05'24.80" (39.090222)
LONGITUDE	= 107°28'15.18" (107.470883)
UTM COORD.: NAD 1927/ZONE 13	
N	= 14204326.005 E = 939285.273

UINTAH ENGINEERING & LAND SURVEYING
85 SOUTH 200 EAST - VERNAL, UTAH 84078
(435) 789-1017

SCALE 1" = 1000'	DATE SURVEYED: 07-09-13	DATE DRAWN: 09-18-13
PARTY B.H. G.O. T.B.	REFERENCES G.L.O. PLAT	
WEATHER COLD	FILE GUNNISON ENERGY CORPORATION	



N00°02'W - 5280.00' (G.L.O.)

