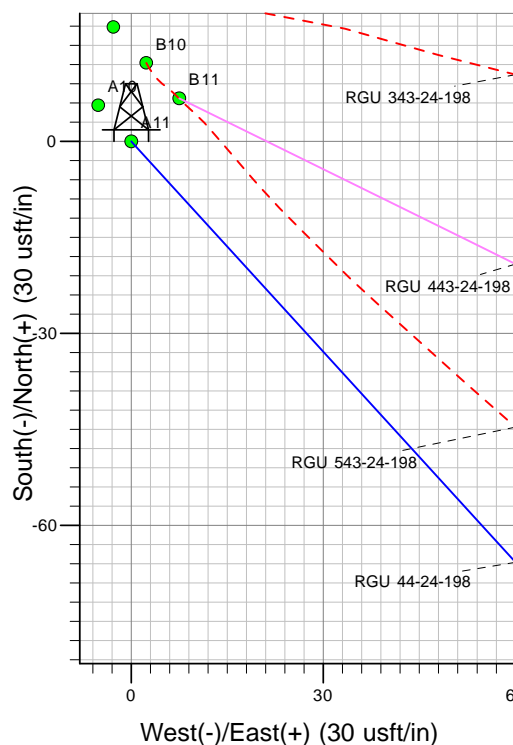
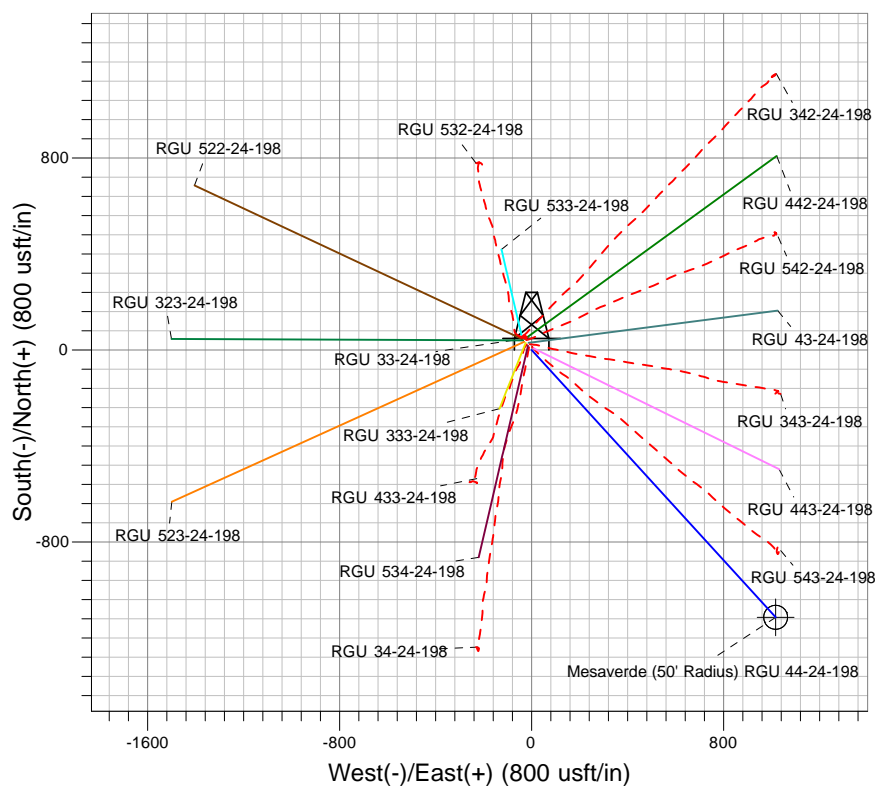
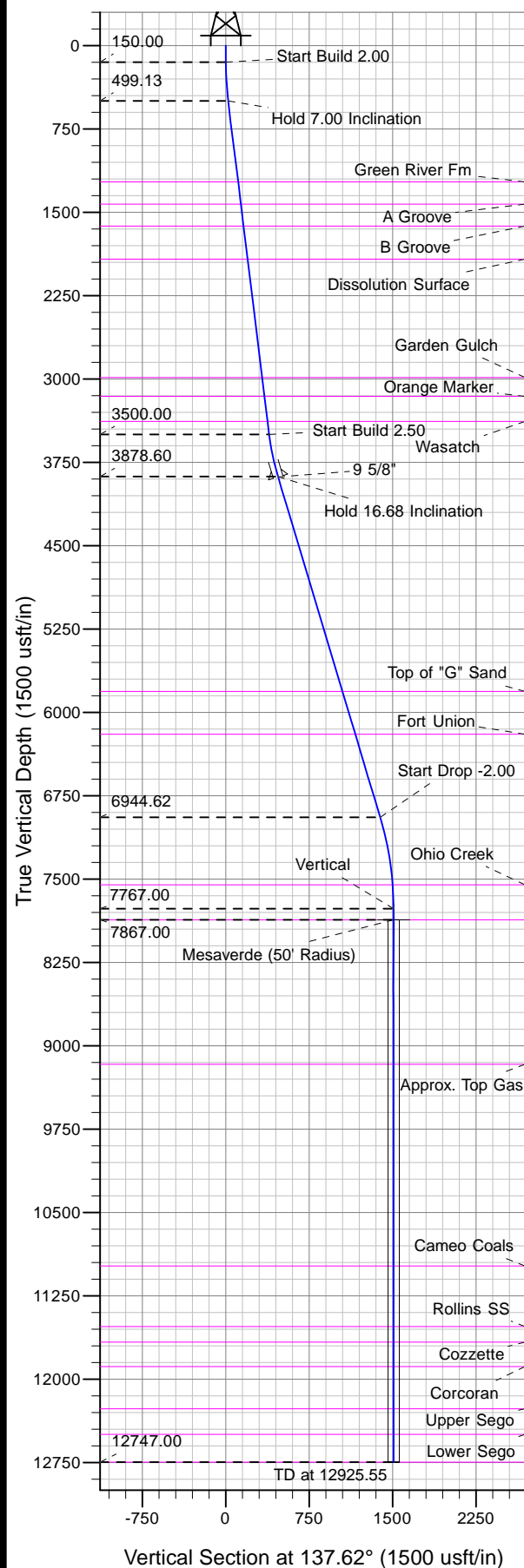




Well Name: RGU 44-24-198
Surface Location: RGU 33-24-198 Pad
North American Datum 1983 , US State Plane 1983, Colorado Central Zone
Ground Elevation: 6596.00

+N/-S	+E/-W	Northing	Easting	Latitude	Longitude	Slot
0.00	0.00	1782411.81	2204030.50	39.94739	-108.33925	A11

KELLY BUSHING @ 6617.00usft (Cyclone 29 (21' RKB) kjs)



Project: RG 24-01S-098W
Site: RGU 33-24-198 Pad
Well: RGU 44-24-198
Plan 2 06Jun13 kjs



Azimuths to True North
Magnetic North: 10.31°

Magnetic Field
Strength: 52245.5snT
Dip Angle: 65.99°
Date: 6/7/2013
Model: IGRF2010

ANNOTATIONS

TVD	MD	Inc	Azi	+N/-S	+E/-W	VSection	Departure	Annotation
150.00	150.00	0.00	0.00	0.00	0.00	0.00	0.00	Start Build 2.00
499.13	500.00	7.00	137.61	-15.77	14.40	21.35	21.35	Hold 7.00 Inclination
3500.00	3523.41	7.00	137.61	-287.91	262.80	389.81	389.81	Start Build 2.50
3878.60	3910.70	16.68	137.62	-346.54	316.30	469.19	469.19	Hold 16.68 Inclination
6944.62	7111.43	16.68	137.62	-1025.29	935.60	1388.01	1388.01	Start Drop -2.00
7767.00	7945.55	0.00	0.00	-1114.36	1016.87	1508.59	1508.59	Vertical
7867.00	8045.55	0.00	0.00	-1114.36	1016.87	1508.59	1508.59	Mesaverde
12747.00	12925.55	0.00	0.00	-1114.36	1016.87	1508.59	1508.59	TD at 12925.55