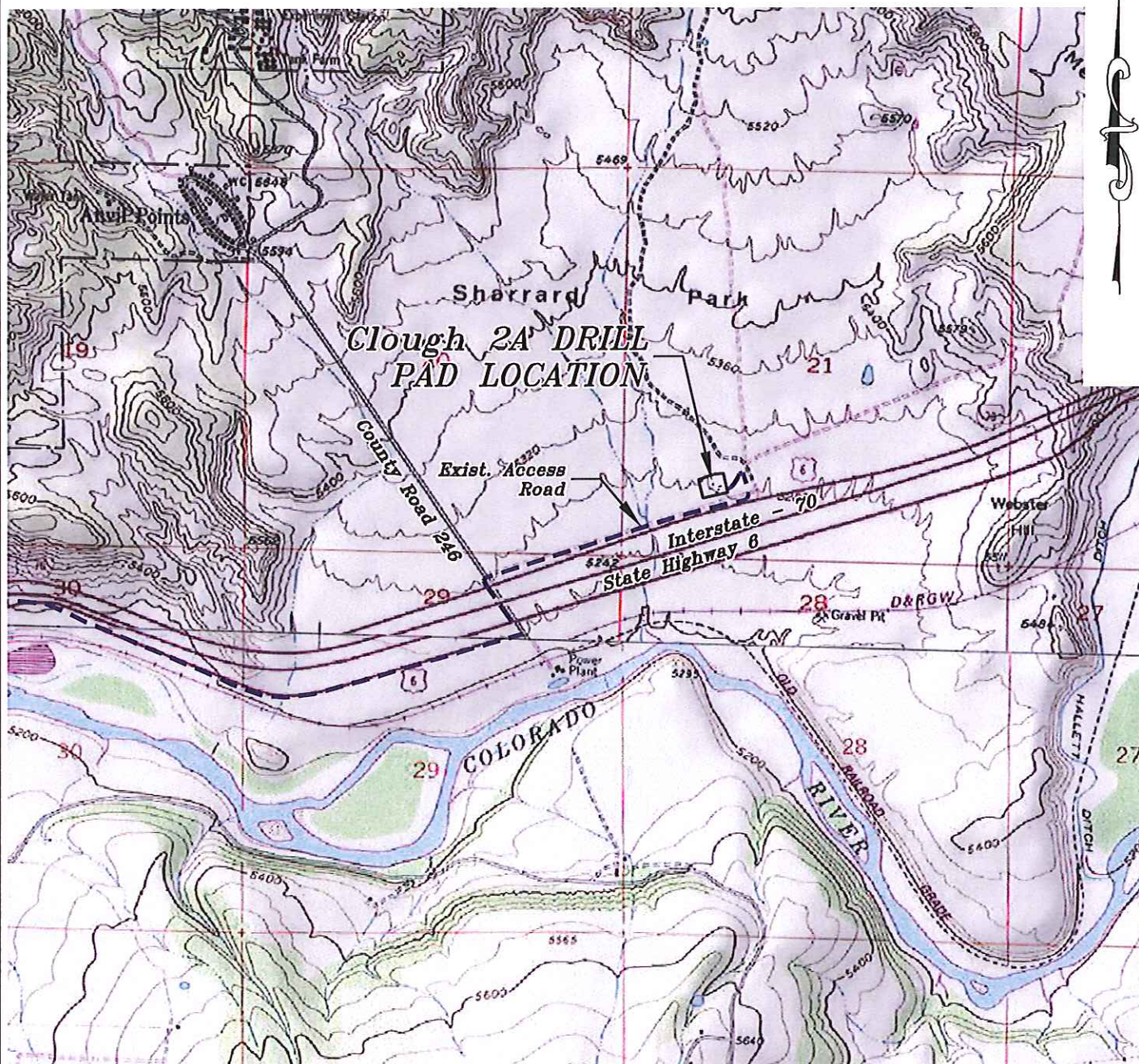


Section 21
T. 6 S., R. 94 W.



0 1000 2000
GRAPHIC SCALE IN FEET
1 INCH = 2000 FEET

ACCESS DESCRIPTION:

FROM THE INTERSECTION OF STATE HIGHWAY 6 AND COUNTY ROAD 323 (RULISON ROAD) NORTH OF RULISON, PROCEED NORTHEASTERLY ON STATE HIGHWAY 6 ± 1.9 MILES TO THE INTERSECTION WITH COUNTY ROAD 246 (DUMP ROAD), PROCEED LEFT IN A NORTHWESTERLY DIRECTION ± 0.1 MILES TO AN INTERSECTION WITH A PAVED ROAD, PROCEED RIGHT IN A NORTHEASTERLY TO NORTHERLY DIRECTION ± 0.8 MILES TO THE EXISTING Clough 2A DRILL PAD LOCATION, AS SHOWN HEREON.

136 East Third Street
Rifle, Colorado 81650
Ph. (970) 625-2720
Fax (970) 625-2773



BOOKCLIFF
Survey Services, Inc.

SCALE: 1" = 2000'
DATE: 8/16/13
PLAT: 5 of 7
PROJECT: Valley
DFT: cws

Construction Plan Prepared for:
WPXENERGY WPX Energy Rocky Mountain, LLC

Clough 2A Injection Well - Plat 5
ACCESS ROAD & TOPO MAP