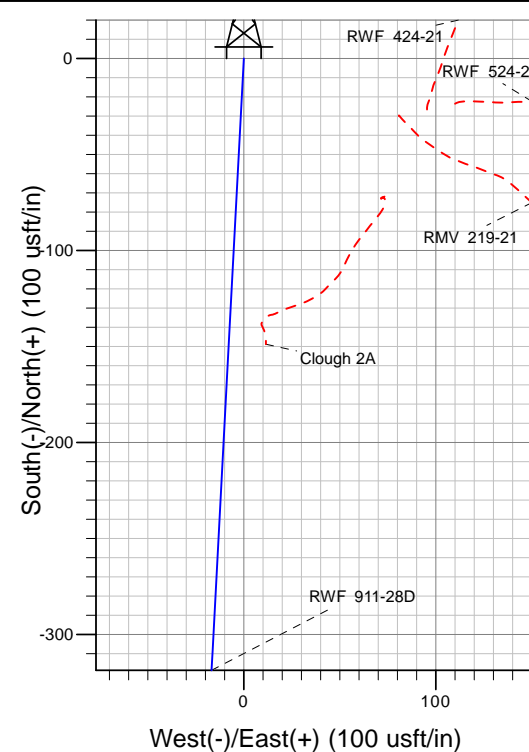
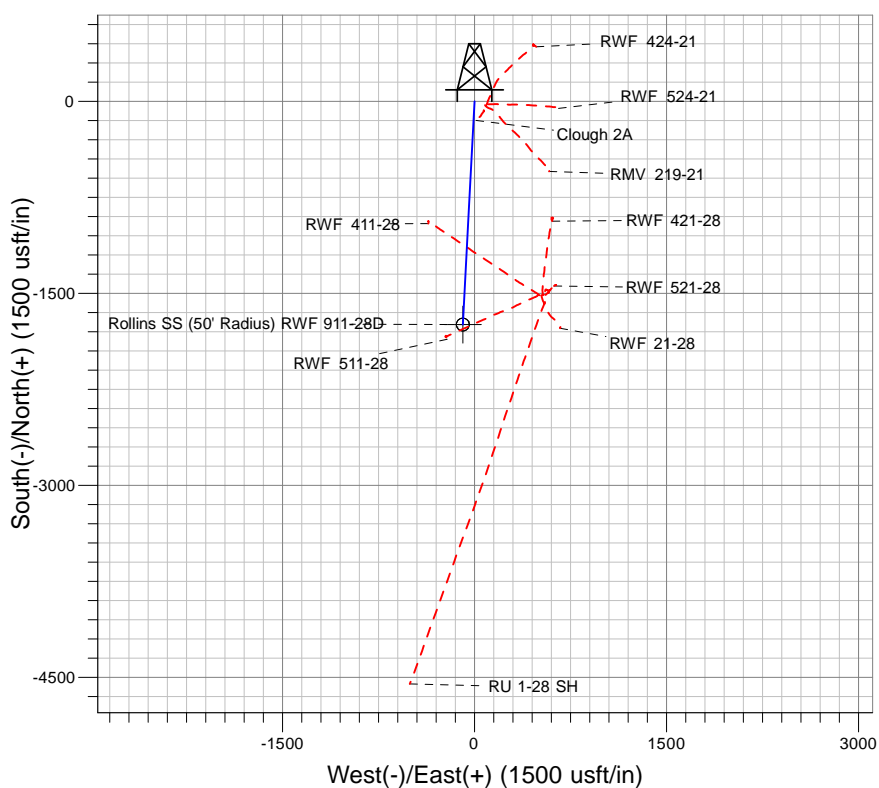
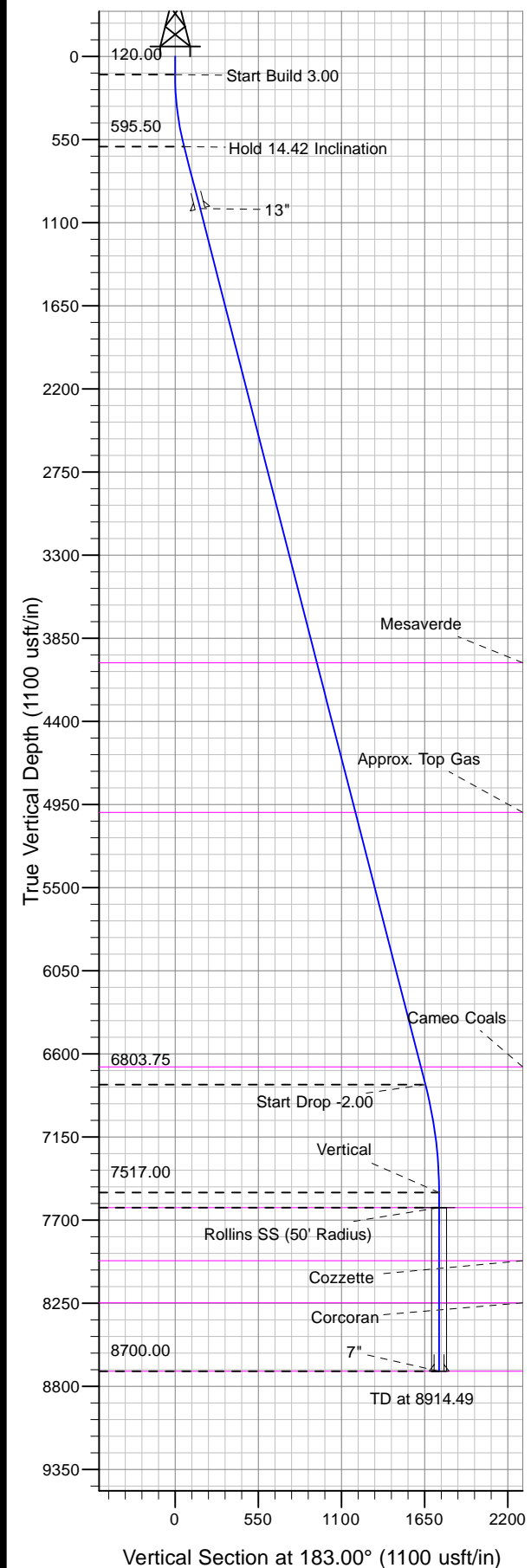




Well Name: RWF 911-28D  
Surface Location: Clough 2A Pad  
North American Datum 1983 , US State Plane 1983, Colorado Central Zone  
Ground Elevation: 5276.00

+N/-S	+E/-W	Northing	Easting	Latitude	Longitude	Slot
0.00	0.00	1617986.60	2323522.40	39.50564	-107.89776	

KELLY BUSHING @ 5302.00usft (Nabors 574 (26' RKB) kjs)



Project: RU 21-06S-094W  
Site: Clough 2A Pad  
Well: RWF 911-28D  
Design #1 07Aug13 kjs

**M** Azimuths to True North  
Magnetic North: 10.00°  
Magnetic Field  
Strength: 52097.7snT  
Dip Angle: 65.72°  
Date: 8/7/2013  
Model: IGRF2005-10

#### ANNOTATIONS

TVD	MD	Inc	Azi	+N/-S	+E/-W	Vsect	Departure	Annotation
120.00	120.00	0.00	0.00	0.00	0.00	0.00	0.00	Start Build 3.00
595.50	600.56	14.42	183.00	-60.06	-3.15	60.14	60.14	Hold 14.42 Inclination
6803.75	7010.65	14.42	183.00	-1653.80	-86.79	1656.08	1656.08	Start Drop -2.00
7517.00	7731.49	0.00	0.00	-1743.89	-91.52	1746.29	1746.29	Vertical
7617.00	7831.49	0.00	0.00	-1743.89	-91.52	1746.29	1746.29	Rollins SS
8700.00	8914.49	0.00	0.00	-1743.89	-91.52	1746.29	1746.29	TD at 8914.49