



September 17, 2013

Mr. Brandon Danforth
Environmental Specialist
WPX Energy Rocky Mountain LLC
1058 County Road 215
Parachute, Colorado 81635

RE: Status Report: Baseline Water Quality Sampling – PA 23-12 Drill Pad

Dear Mr. Danforth,

Western Water & Land, Inc. (WWL) completed a hydrologic water source evaluation for the WPX Energy Rocky Mountain LLC (WPX) PA 23-12 Drill Pad in accordance with COGCC Rule 609. Drill Pad PA 23-12 is located in NE1/4, SW1/4, Section 12, Township 7 S, Range 95 W, 6th P.M. This letter report addresses field revisions and the sampling location status as relevant to the original executed Baseline Water Quality Evaluation dated May 23, 2013.

The original evaluation considered all water sources as defined in Rule 609 within a 0.5-mile radius of the referenced drill pad. Water sources located within a 0.5-mile radius of the PA 23-12 Drill Pad are shown in Figure 1. Please see the original Baseline Water Quality Evaluation (May 23, 2013) for complete details on how the evaluation was conducted.

Preferred Water Sources

In accordance with Rule 609, all available water sources within a 0.5-mile radius of the drill pad, up to a maximum of four sources must be included in the baseline and subsequent monitoring program. The original Baseline Water Quality Evaluation identified one potentially available water source located within 0.5 miles of the PA 23-12 Drill Pad. This water source was considered to be a preferred water source. The preferred potentially available water source identified is as follows:

- Spring G-7951214-1 (water rights owned by U.S. Bureau of Land Management (BLM))

Preferred water sources are incorporated into the baseline water quality monitoring program provided the structures exist, and the structure owner, or land owner if the structure owner is not known, grants approval to sample the source and inspection of the structure confirms that a representative sample can be obtained from the structure.

Field Results

WWL personnel conducted a broad field reconnaissance on July 22, 2013 in the area where the BLM spring is located according to DWR databases. The area was characterized by piñon-juniper and Gambel oak plant communities. A small grove of cottonwood trees was located but a spring emanation point or moist soil was not found. Pictures from field reconnaissance are included in attachment A. As a

result of these events, no water source sampling sites will be included in the baseline water quality sampling program.

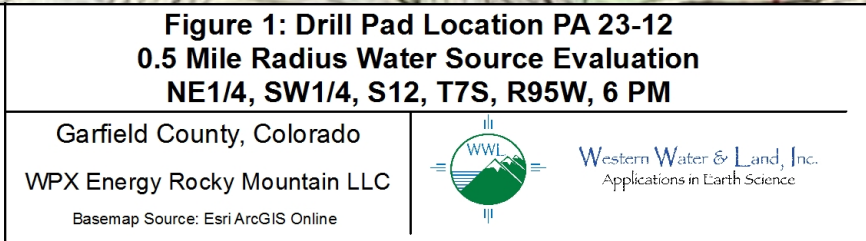
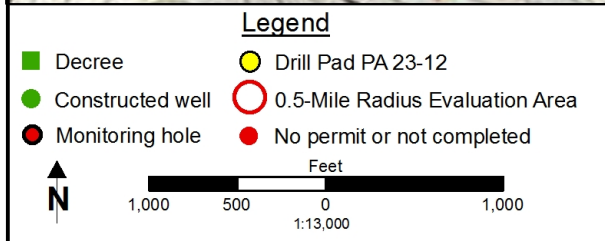
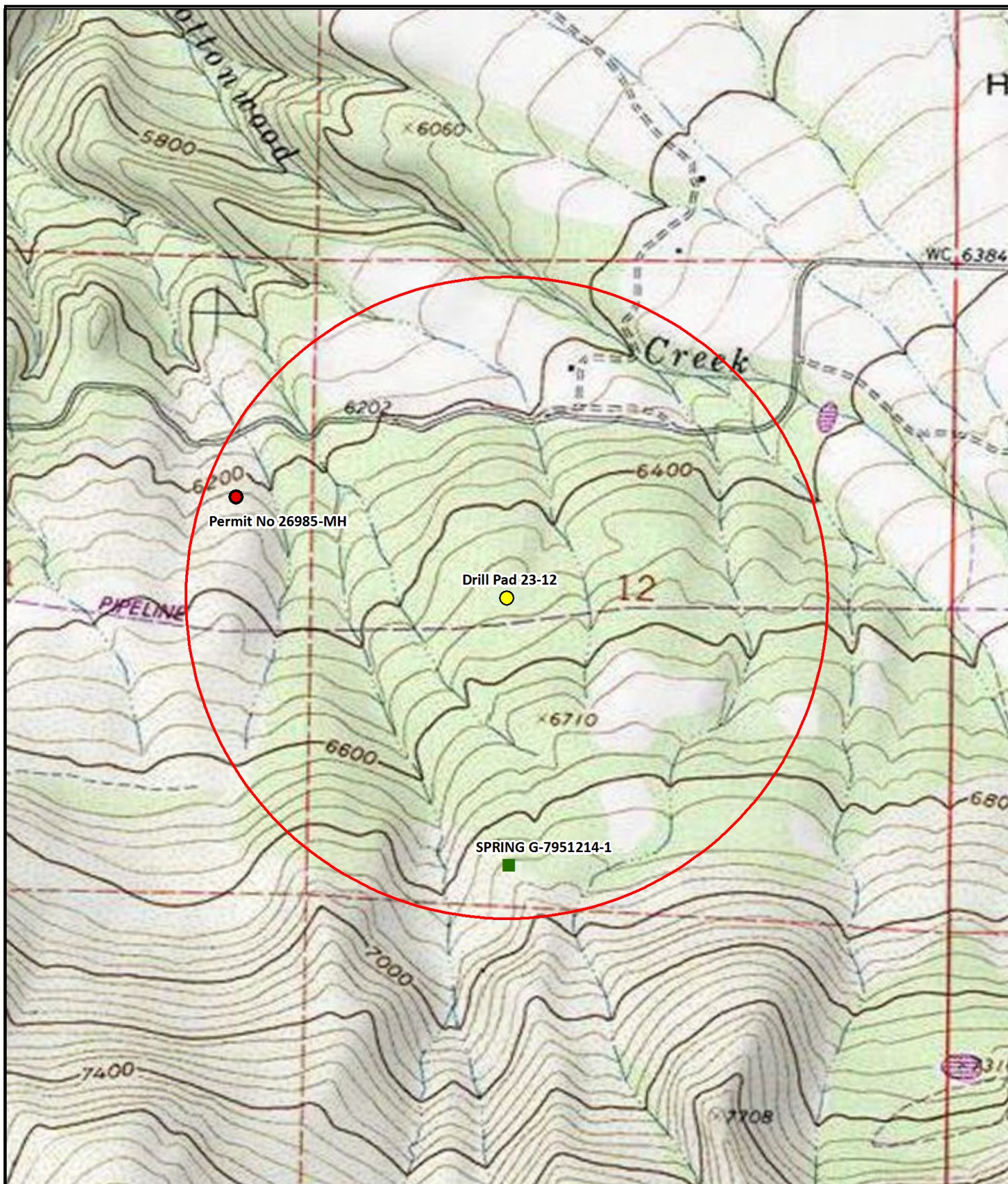
If you have any questions or concerns, please contact me at (970) 242-0170.

Sincerely,

A handwritten signature in black ink, appearing to read "Bruce D. Smith". The signature is fluid and cursive, with the first name "Bruce" being more legible than the last name "Smith".

Bruce D. Smith
Principal Hydrogeologist
WESTERN WATER & LAND, INC.

Attachments



Attachment A

Field Reconnaissance Pictures



View from access road towards grove of cottonwoods and suspected spring location.



Landscape surrounding the cottonwood grove.



Cattle trail directly below the suspected seasonal emanation point.



Deep, dry depressions from cattle traffic.



Cattle tracks and cracked soil.



Vegetation composition beneath canopy of the cottonwoods.