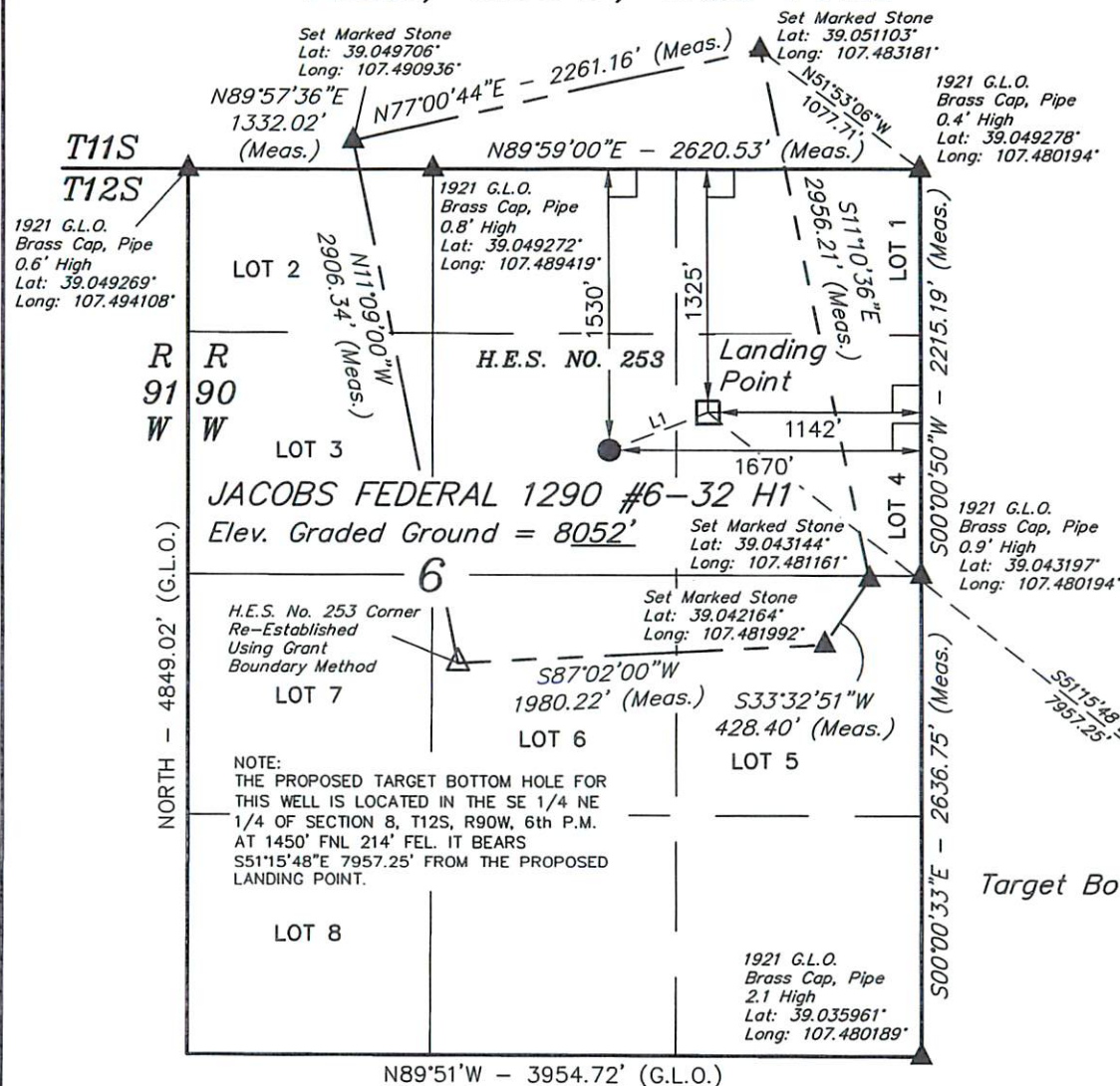


T12S, R90W, 6th P.M.



GUNNISON ENERGY CORPORATION

Well location, JACOBS FEDERAL 1290 #6-32 H1 (SURFACE LOCATION), located as shown in the SW 1/4 NE 1/4 of Section 6, T12S, R90W, 6th P.M., Gunnison County, Colorado.

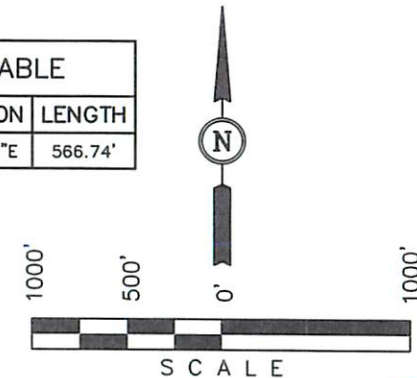
BASIS OF ELEVATION

SPOT ELEVATION LOCATED IN THE NE 1/4 OF SECTION 9, T11S, R90W, 6th P.M. TAKEN FROM THE BULL MOUNTAIN, QUADRANGLE, COLORADO, GUNNISON COUNTY, 7.5 MINUTE QUAD (TOPOGRAPHIC MAP) PUBLISHED BY THE UNITED STATES DEPARTMENT OF THE INTERIOR, GEOLOGICAL SURVEY. SAID ELEVATION IS MARKED AS BEING 7487 FEET.

BASIS OF BEARINGS

BASIS OF BEARINGS IS A G.P.S. OBSERVATION.

LINE TABLE		
LINE	DIRECTION	LENGTH
L1	N68°45'00"E	566.74'



CERTIFICATE

THIS IS TO CERTIFY THAT THE ABOVE PLAT WAS PREPARED FROM FIELD NOTES OF ACTUAL SURVEYS MADE BY ME OR UNDER MY SUPERVISION AND THAT THE SAME ARE TRUE AND CORRECT TO THE BEST OF MY KNOWLEDGE AND BELIEF.

REGISTERED LAND SURVEYOR
REGISTRATION NO. 17499
STATE OF COLORADO

REVISED: 06-26-13 T.B.

UINTAH ENGINEERING & LAND SURVEYING

85 SOUTH 200 EAST - VERNAL, UTAH 84078

(435) 789-1017

LEGEND:

- └─ = 90° SYMBOL
- = PROPOSED WELL HEAD.
- ▲ = SECTION CORNERS LOCATED
- △ = SECTION CORNERS RE-ESTABLISHED.
(Not Set on Ground.)

PDOP = 2.0

NAD 83 (LANDING POINT)	NAD 83 (SURFACE LOCATION)
LATITUDE = 39°02'44.30" (39.045639)	LATITUDE = 39°02'42.27" (39.045075)
LONGITUDE = 107°29'03.17" (107.484214)	LONGITUDE = 107°29'09.86" (107.486072)
NAD 27 (LANDING POINT)	NAD 27 (SURFACE LOCATION)
LATITUDE = 39°02'44.35" (39.045653)	LATITUDE = 39°02'42.32" (39.045089)
LONGITUDE = 107°29'00.97" (107.483603)	LONGITUDE = 107°29'07.67" (107.485464)
UTM COORD.: NAD 1927/ZONE 13 N = 14188194.06 E = 935231.38	UTM COORD.: NAD 1927/ZONE 13 N = 14188002.98 E = 934697.95

SCALE 1" = 1000'	DATE SURVEYED: 06-14-13	DATE DRAWN: 06-17-13
PARTY B.B. B.J. T.B.	REFERENCES G.L.O. PLAT	
WEATHER WARM	FILE GUNNISON ENERGY CORPORATION	

T12S, R90W, 6th P.M.

GUNNISON ENERGY CORPORATION

Well location, JACOBS FEDERAL 1290 #6-32 H1 (WELLBORE) located as shown in the SW 1/4 of Section 5, T12S, R90W, 6th P.M., Gunnison County, Colorado.

BASIS OF ELEVATION

SPOT ELEVATION LOCATED IN THE NE 1/4 OF SECTION 9, T11S, R90W, 6th P.M. TAKEN FROM THE BULL MOUNTAIN, QUADRANGLE, COLORADO, GUNNISON COUNTY, 7.5 MINUTE QUAD (TOPOGRAPHIC MAP) PUBLISHED BY THE UNITED STATES DEPARTMENT OF THE INTERIOR, GEOLOGICAL SURVEY. SAID ELEVATION IS MARKED AS BEING 7487 FEET.

BASIS OF BEARINGS

BASIS OF BEARINGS IS A G.P.S. OBSERVATION.

LINE TABLE		
LINE	DIRECTION	LENGTH
L1	N68°45'00"E	566.74'



SCALE

CERTIFICATE

THIS IS TO CERTIFY THAT THE ABOVE PLAT WAS PREPARED FROM FIELD NOTES OF ACTUAL SURVEYS MADE BY ME OR UNDER MY SUPERVISION AND THAT THE SAME ARE TRUE AND CORRECT TO THE BEST OF MY KNOWLEDGE AND BELIEF.

REGISTERED LAND SURVEYOR
REGISTRATION NO. 1199
STATE OF COLORADO
09-16-13

UINTAH ENGINEERING & LAND SURVEYING

85 SOUTH 200 EAST - VERNAL, UTAH 84078

(435) 789-1017

SCALE 1" = 1000'	DATE SURVEYED: 06-14-13	DATE DRAWN: 09-16-13
PARTY B.B. B.J. T.B.	REFERENCES G.L.O. PLAT	
WEATHER: WARM	FILE GUNNISON ENERGY CORPORATION	

T11S

T12S

WEST - 5280.00' (G.L.O.)

1921 Brass Cap
Pipe, 0.4' High
Lat: 39.049278°
Long: 107.480194°

LOT 4

LOT 3

LOT 2

LOT 1

NOTE:
THE PROPOSED TARGET BOTTOM HOLE
BEARS S51°15'48"E 7957.25' FROM THE
PROPOSED LANDING POINT WHICH IS
LOCATED IN THE SE 1/4 NE 1/4 OF
SECTION 6, T12S, R90W, 6th P.M. AT
1325' FNL 1142' FEL.

1921 Brass Cap
Pipe, 0.9' High
Lat: 39.043197°
Long: 107.480194°

5

Landing
Point

Surface
Location

S00°00'50"W
2215.19' (Meas.)

S00°00'33"E - 2636.75' (Meas.)

1921 Brass Cap
Pipe, 2.1 High
Lat: 39.035961°
Long: 107.480189°

1921 Brass Cap
Pipe, 0.9' High
Lat: 39.035953°
Long: 107.470897°

1921 Brass Cap
0.8' High
Lat: 39.035958°
Long: 107.461628°

N89°54'26"W - 2640.36' (Meas.)

S89°57'22"W - 2634.53' (Meas.)

Wellbore

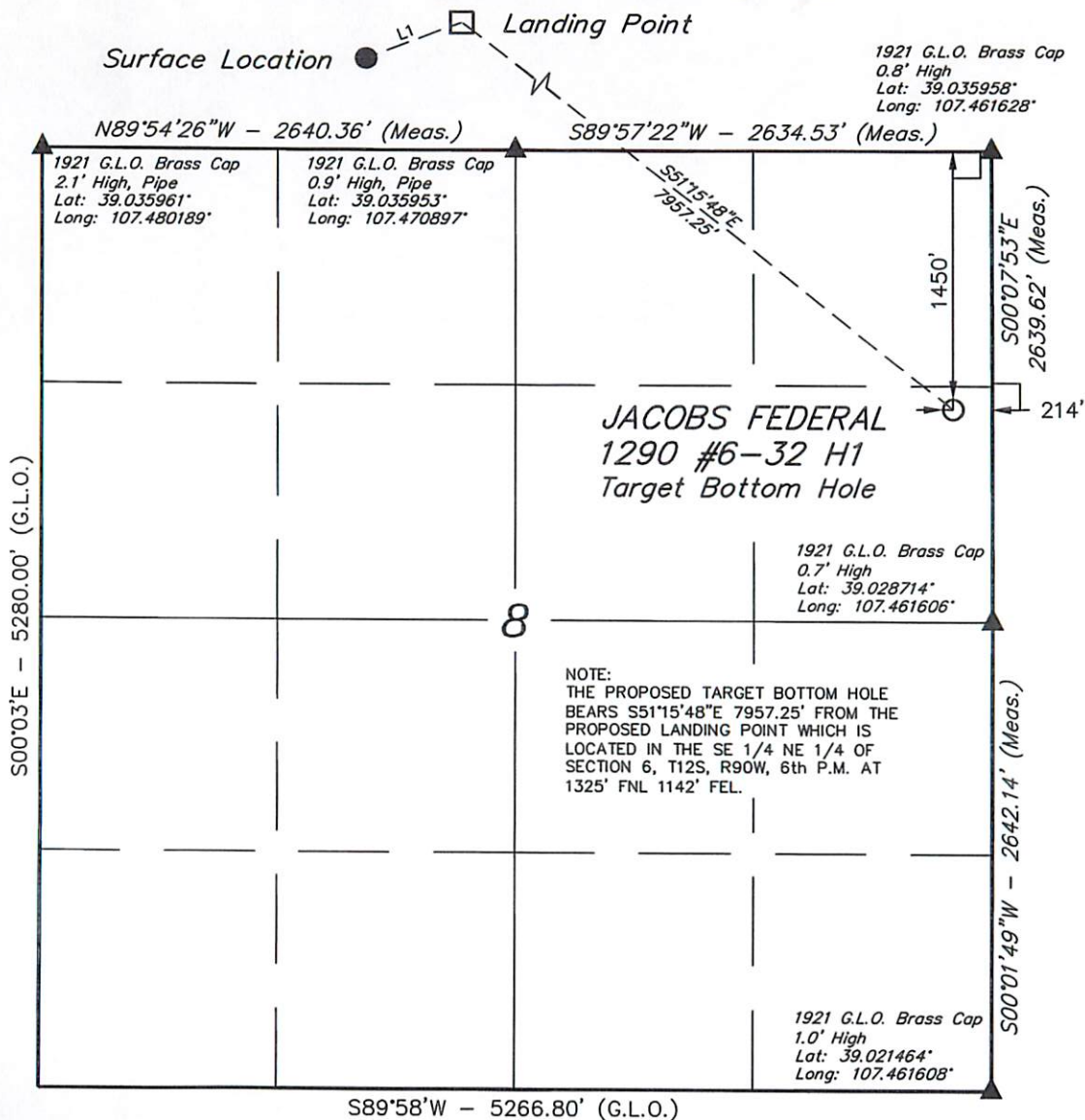
Target Bottom Hole

LEGEND:

- └─ = 90° SYMBOL
- = PROPOSED WELL HEAD.
- ▲ = SECTION CORNERS LOCATED.
- △ = SECTION CORNERS RE-ESTABLISHED.
(Not Set on Ground.)

NOTE:
THE PROPOSED TARGET BOTTOM HOLE FOR
THIS WELL IS LOCATED IN THE SE 1/4 NE
1/4 OF SECTION 8, T12S, R90W, 6th P.M.
AT 1450' FNL 214' FEL. IT BEARS
S51°15'48"E 7957.25' FROM THE PROPOSED
LANDING POINT.

T12S, R90W, 6th P.M.



LEGEND:

- └─┘ = 90° SYMBOL
- = PROPOSED WELL HEAD.
- ▲ = SECTION CORNERS LOCATED.

NAD 83 (TARGET BOTTOM HOLE)
LATITUDE = 39°01'55.12" (39.031978)
LONGITUDE = 107°27'44.52" (107.462367)
NAD 27 (TARGET BOTTOM HOLE)
LATITUDE = 39°01'55.17" (39.031992)
LONGITUDE = 107°27'42.32" (107.461756)
UTM COORD.: NAD 1927/ZONE 13
N = 14183050.79 E = 941300.86

GUNNISON ENERGY CORPORATION

Well location, JACOBS FEDERAL 1290 #6-32 H1 (TARGET BOTTOM HOLE), located as shown in the SE 1/4 NE 1/4 of Section 8, T12S, R90W, 6th P.M., Gunnison County, Colorado.

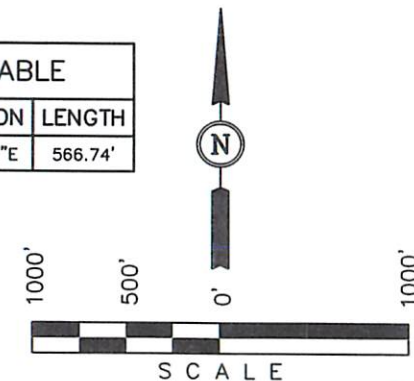
BASIS OF ELEVATION

SPOT ELEVATION LOCATED IN THE NE 1/4 OF SECTION 9, T11S, R90W, 6th P.M. TAKEN FROM THE BULL MOUNTAIN, QUADRANGLE, COLORADO, GUNNISON COUNTY, 7.5 MINUTE QUAD (TOPOGRAPHIC MAP) PUBLISHED BY THE UNITED STATES DEPARTMENT OF THE INTERIOR, GEOLOGICAL SURVEY. SAID ELEVATION IS MARKED AS BEING 7487 FEET.

BASIS OF BEARINGS

BASIS OF BEARINGS IS A G.P.S. OBSERVATION.

LINE TABLE		
LINE	DIRECTION	LENGTH
L1	N68°45'00"E	566.74'



CERTIFICATE

THIS IS TO CERTIFY THAT THE ABOVE PLAT WAS PREPARED FROM FIELD NOTES OF ACTUAL SURVEYS MADE BY ME OR UNDER MY SUPERVISION AND THAT THE SAME ARE TRUE AND CORRECT TO THE BEST OF MY KNOWLEDGE AND BELIEF.

REGISTERED LAND SURVEYOR
REGISTRATION NO. 17492
STATE OF COLORADO
06-20-13

UINTAH ENGINEERING & LAND SURVEYING

85 SOUTH 200 EAST - VERNAL, UTAH 84078

(435) 789-1017

SCALE 1" = 1000'	DATE SURVEYED: 06-14-13	DATE DRAWN: 06-17-13
PARTY B.B. B.J. T.B.	REFERENCES G.L.O. PLAT	
WEATHER WARM	FILE GUNNISON ENERGY CORPORATION	