

BONANZA CREEK OIL COMPANY

Location: COLORADO Slot: SLOT#01 STATE NORTH PLATTE F-J-26HNB (457'FNL & 956'FWL,SEC.26)
Field: WELD COUNTY Well: STATE NORTH PLATTE F-J-26HNB
Facility: SEC.26-T5N-R63W Wellbore: STATE NORTH PLATTE F-J-26HNB PWB

Plot reference wellpath is STATE NORTH PLATTE F-J-26HNB (REV-A.1) PWB

True vertical depths are referenced to CADE 22 (RKB)	Grid System: NAD83 / Lambert Colorado SP, Northern Zone (501), US feet
Measured depths are referenced to CADE 22 (RKB)	North Reference: True north
CADE 22 (RKB) to Mean Sea Level: 4582 feet	Scale: True distance
Mean Sea Level to Mud line (At Slot: SLOT#01 STATE NORTH PLATTE F-J-26HNB (457'FNL & 956'FWL,SEC.26)): 0 feet	Depths are in feet
Coordinates are in feet referenced to Slot	Created by: gurnalier on 8/7/2013

Location Information

Facility Name				Grid East (US ft)	Grid North (US ft)	Latitude	Longitude
SEC 26-T5N-R63W				3303950.838	1381774.536	40°22'34.464"N	104°24'32.436"W
Slot	Local N (ft)	Local E (ft)	Grid East (US ft)	Grid North (US ft)	Latitude	Longitude	
SLOT#01 STATE NORTH PLATTE F-J-26HNB (457FNL & 956FWL,SEC.26)	0.00	0.00	3303950.838	1381774.536	40°22'34.464"N	104°24'32.436"W	
CADE 22 (RKB) to Mud line (At Slot: SLOT#01 STATE NORTH PLATTE F-J-26HNB (457FNL & 956FWL,SEC.26))						4582ft	
Mean Sea Level to Mud line (At Slot: SLOT#01 STATE NORTH PLATTE F-J-26HNB (457FNL & 956FWL,SEC.26))						0ft	
CADE 22 (RKB) to Mean Sea Level						4582ft	

Well Profile Data

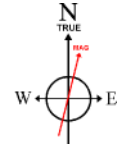
Design Comment	MD (ft)	Inc (°)	Az (°)	TVD (ft)	Local N (ft)	Local E (ft)	DLS (°/100ft)	VS (ft)
Tie On	17.00	0.000	37.290	17.00	0.00	0.00	0.00	0.00
End of Tangent	600.00	0.000	37.290	600.00	0.00	0.00	0.00	0.00
End of Build	892.50	5.850	37.290	891.99	11.87	9.04	2.00	-11.27
End of Tangent	5790.95	5.850	37.290	5764.93	409.08	311.52	0.00	-388.27
End of 3D Arc	6470.35	70.000	180.728	6296.66	67.59	331.34	11.00	-46.22
End of Tangent	6540.35	70.000	180.728	6320.60	1.82	330.50	0.00	19.37
End of 3D Arc	6722.17	90.000	180.728	6352.01	-176.31	328.24	11.00	196.99
End of Tangent	10841.40	90.000	180.728	6352.00	-4295.22	275.88	0.00	4304.07

Targets

Name	MD (ft)	TVD (ft)	Local N (ft)	Local E (ft)	Grid East (US ft)	Grid North (US ft)	Latitude	Longitude
STATE NORTH PLATTE F-J-26HNB SECTION 26	0.00	0.00	0.00	0.00	3303950.838	1381774.534	40°22'34.464"N	104°24'32.436"W
STATE NORTH PLATTE F-J-26HNB BHL From Plat Rev-1 (460'FSL & 1290'FWL, SEC.26)	10841.40	6352.00	4295.22	275.88	3304079.53	1377483.23	40°21'52.607"N	104°24'08.872"W
STATE NORTH PLATTE F-J-26HNB HARDLINE (460' SETBACKS)	6352.00	0.00	0.00	0.00	3303950.838	1381774.534	40°22'34.464"N	104°24'32.436"W
STATE NORTH PLATTE F-J-26HNB TARGET	6352.00	-16.50	531.55	3304083.30	1381702.12	40°22'33.708"N	104°24'08.127"W	
STATE F-J-26 (500' Radius)	7075.00	-2753.53	3557.52	2301541.81	1379005.10	40°22'37.252"N	104°23'46.472"W	

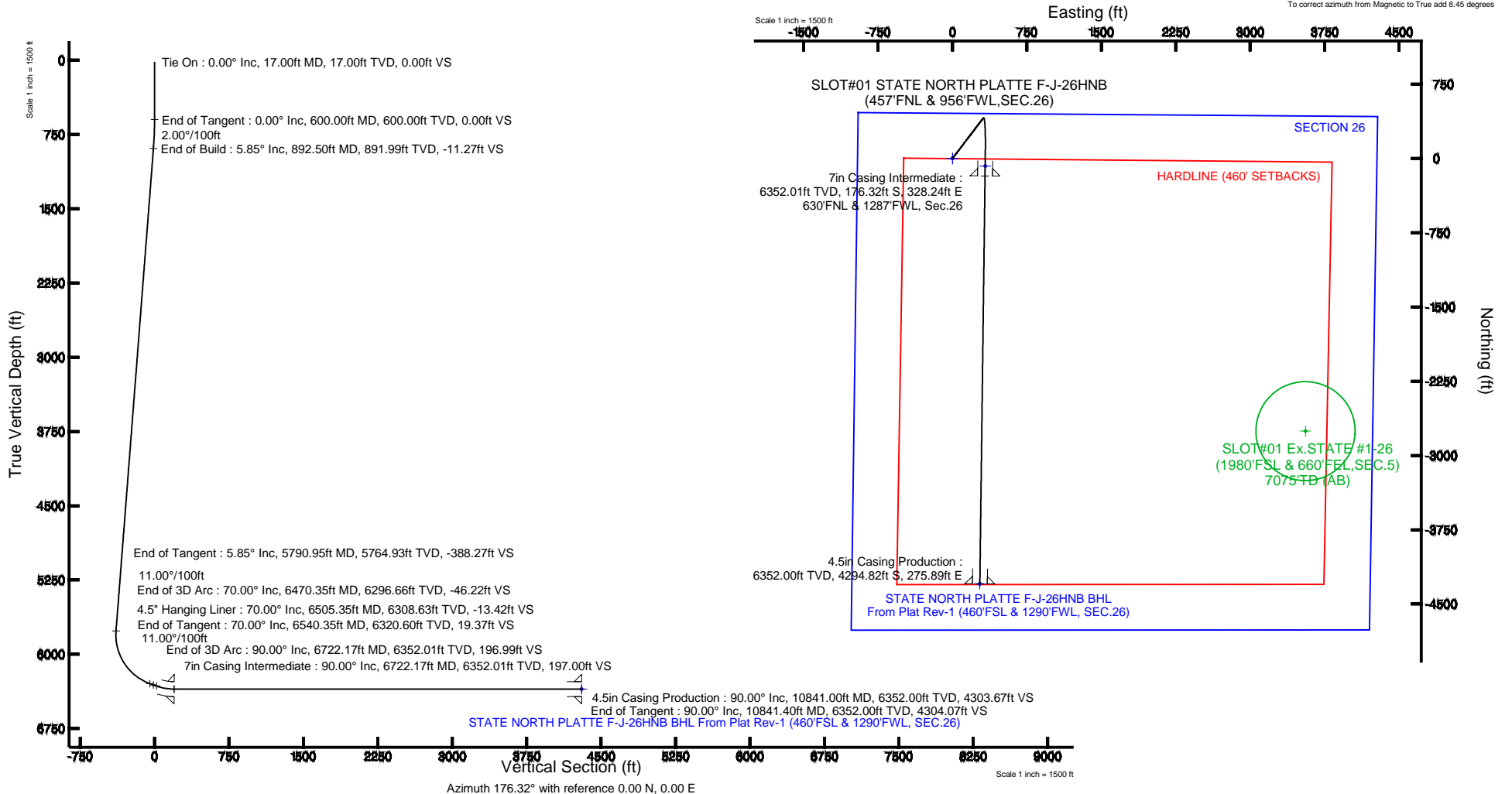
Survey Program

Start MD (ft)	End MD (ft)	Tool	Model	Log Name/Comment	Wellbore
17.00	10841.40	NavTrak	NavTrak (Standard)		STATE NORTH PLATTE F-J-26HNB PWB



BGGM (1945.0 to 2014.0) Dip: 66.99° Field: 52832.7 nT
Magnetic North is 8.45 degrees East of True North (at 7/16/2013)

To correct azimuth from Magnetic to True add 8.45 degrees





Planned Wellpath Report

STATE NORTH PLATTE F-J-26HNB (REV-A.1) PWP
Page 1 of 7



REFERENCE WELLPATH IDENTIFICATION

Operator	BONANZA CREEK OIL COMPANY	Slot	SLOT#01 STATE NORTH PLATTE F-J-26HNB (457'FNL & 956'FWL,SEC.26)
Area	COLORADO	Well	STATE NORTH PLATTE F-J-26HNB
Field	WELD COUNTY	Wellbore	STATE NORTH PLATTE F-J-26HNB PWB
Facility	SEC.26-T5N-R63W		

REPORT SETUP INFORMATION

Projection System	NAD83 / Lambert Colorado SP, Northern Zone (501), US feet	Software System	WellArchitect® 4.0.0
North Reference	True	User	Guenaler
Scale	0.999959	Report Generated	8/7/2013 at 3:53:07 PM
Convergence at slot	n/a	Database/Source file	WA_Denver/STATE_NORTH_PLATTE_F-J-26HNB_PWB.xml

WELLPATH LOCATION

	Local coordinates		Grid coordinates		Geographic coordinates	
	North[ft]	East[ft]	Easting[US ft]	Northing[US ft]	Latitude	Longitude
Slot Location	0.00	0.00	3303950.84	1381774.54	40°22'34.464"N	104°24'32.436"W
Facility Reference Pt			3303950.84	1381774.54	40°22'34.464"N	104°24'32.436"W
Field Reference Pt			3327718.19	1377782.99	40°21'52.020"N	104°19'26.040"W

WELLPATH DATUM

Calculation method	Minimum curvature	CADE 22 (RKB) to Facility Vertical Datum	4582.00ft
Horizontal Reference Pt	Slot	CADE 22 (RKB) to Mean Sea Level	4582.00ft
Vertical Reference Pt	CADE 22 (RKB)	CADE 22 (RKB) to Mud Line at Slot (SLOT#01 STATE NORTH PLATTE F-J-26HNB (457'FNL & 956'FWL,SEC.26))	4582.00ft
MD Reference Pt	CADE 22 (RKB)	Section Origin	N 0.00, E 0.00 ft
Field Vertical Reference	Mean Sea Level	Section Azimuth	176.32°



Planned Wellpath Report

STATE NORTH PLATTE F-J-26HNB (REV-A.1) PWP
Page 2 of 7



REFERENCE WELLPATH IDENTIFICATION

Operator	BONANZA CREEK OIL COMPANY	Slot	SLOT#01 STATE NORTH PLATTE F-J-26HNB (457'FNL & 956'FWL,SEC.26)
Area	COLORADO	Well	STATE NORTH PLATTE F-J-26HNB
Field	WELD COUNTY	Wellbore	STATE NORTH PLATTE F-J-26HNB PWB
Facility	SEC.26-T5N-R63W		

WELLPATH DATA (118 stations) † = interpolated/extrapolated station

MD [ft]	Inclination [°]	Azimuth [°]	TVD [ft]	Vert Sect [ft]	North [ft]	East [ft]	Latitude	Longitude	DLS [°/100ft]	Comments
0.00†	0.000	37.290	0.00	0.00	0.00	0.00	40°22'34.464"N	104°24'32.436"W	0.00	
17.00	0.000	37.290	17.00	0.00	0.00	0.00	40°22'34.464"N	104°24'32.436"W	0.00	Tie On
117.00†	0.000	37.290	117.00	0.00	0.00	0.00	40°22'34.464"N	104°24'32.436"W	0.00	
217.00†	0.000	37.290	217.00	0.00	0.00	0.00	40°22'34.464"N	104°24'32.436"W	0.00	
317.00†	0.000	37.290	317.00	0.00	0.00	0.00	40°22'34.464"N	104°24'32.436"W	0.00	
417.00†	0.000	37.290	417.00	0.00	0.00	0.00	40°22'34.464"N	104°24'32.436"W	0.00	
517.00†	0.000	37.290	517.00	0.00	0.00	0.00	40°22'34.464"N	104°24'32.436"W	0.00	
600.00	0.000	37.290	600.00	0.00	0.00	0.00	40°22'34.464"N	104°24'32.436"W	0.00	End of Tangent
617.00†	0.340	37.290	617.00	-0.04	0.04	0.03	40°22'34.464"N	104°24'32.436"W	2.00	
717.00†	2.340	37.290	716.97	-1.80	1.90	1.45	40°22'34.483"N	104°24'32.417"W	2.00	
817.00†	4.340	37.290	816.79	-6.20	6.54	4.98	40°22'34.529"N	104°24'32.372"W	2.00	
892.50	5.850	37.290	891.99	-11.27	11.87	9.04	40°22'34.581"N	104°24'32.319"W	2.00	End of Build
917.00†	5.850	37.290	916.36	-13.15	13.86	10.55	40°22'34.601"N	104°24'32.300"W	0.00	
1017.00†	5.850	37.290	1015.84	-20.85	21.97	16.73	40°22'34.681"N	104°24'32.220"W	0.00	
1117.00†	5.850	37.290	1115.32	-28.54	30.07	22.90	40°22'34.761"N	104°24'32.140"W	0.00	
1217.00†	5.850	37.290	1214.80	-36.24	38.18	29.08	40°22'34.841"N	104°24'32.060"W	0.00	
1317.00†	5.850	37.290	1314.28	-43.94	46.29	35.25	40°22'34.921"N	104°24'31.981"W	0.00	
1417.00†	5.850	37.290	1413.76	-51.63	54.40	41.43	40°22'35.002"N	104°24'31.901"W	0.00	
1517.00†	5.850	37.290	1513.24	-59.33	62.51	47.60	40°22'35.082"N	104°24'31.821"W	0.00	
1617.00†	5.850	37.290	1612.72	-67.03	70.62	53.78	40°22'35.162"N	104°24'31.741"W	0.00	
1717.00†	5.850	37.290	1712.20	-74.72	78.73	59.95	40°22'35.242"N	104°24'31.661"W	0.00	
1817.00†	5.850	37.290	1811.68	-82.42	86.84	66.13	40°22'35.322"N	104°24'31.582"W	0.00	
1917.00†	5.850	37.290	1911.16	-90.12	94.95	72.30	40°22'35.402"N	104°24'31.502"W	0.00	
2017.00†	5.850	37.290	2010.64	-97.81	103.05	78.48	40°22'35.482"N	104°24'31.422"W	0.00	
2117.00†	5.850	37.290	2110.12	-105.51	111.16	84.65	40°22'35.562"N	104°24'31.342"W	0.00	
2217.00†	5.850	37.290	2209.59	-113.20	119.27	90.83	40°22'35.643"N	104°24'31.262"W	0.00	
2317.00†	5.850	37.290	2309.07	-120.90	127.38	97.00	40°22'35.723"N	104°24'31.183"W	0.00	
2417.00†	5.850	37.290	2408.55	-128.60	135.49	103.18	40°22'35.803"N	104°24'31.103"W	0.00	
2517.00†	5.850	37.290	2508.03	-136.29	143.60	109.35	40°22'35.883"N	104°24'31.023"W	0.00	
2617.00†	5.850	37.290	2607.51	-143.99	151.71	115.53	40°22'35.963"N	104°24'30.943"W	0.00	



Planned Wellpath Report

STATE NORTH PLATTE F-J-26HNB (REV-A.1) PWP
Page 3 of 7



REFERENCE WELLPATH IDENTIFICATION

Operator	BONANZA CREEK OIL COMPANY	Slot	SLOT#01 STATE NORTH PLATTE F-J-26HNB (457'FNL & 956'FWL,SEC.26)
Area	COLORADO	Well	STATE NORTH PLATTE F-J-26HNB
Field	WELD COUNTY	Wellbore	STATE NORTH PLATTE F-J-26HNB PWB
Facility	SEC.26-T5N-R63W		

WELLPATH DATA (118 stations) † = interpolated/extrapolated station

MD [ft]	Inclination [°]	Azimuth [°]	TVD [ft]	Vert Sect [ft]	North [ft]	East [ft]	Latitude	Longitude	DLS [°/100ft]	Comments
2717.00†	5.850	37.290	2706.99	-151.69	159.82	121.70	40°22'36.043"N	104°24'30.863"W	0.00	
2817.00†	5.850	37.290	2806.47	-159.38	167.93	127.88	40°22'36.123"N	104°24'30.784"W	0.00	
2917.00†	5.850	37.290	2905.95	-167.08	176.03	134.05	40°22'36.204"N	104°24'30.704"W	0.00	
3017.00†	5.850	37.290	3005.43	-174.78	184.14	140.23	40°22'36.284"N	104°24'30.624"W	0.00	
3117.00†	5.850	37.290	3104.91	-182.47	192.25	146.40	40°22'36.364"N	104°24'30.544"W	0.00	
3217.00†	5.850	37.290	3204.39	-190.17	200.36	152.58	40°22'36.444"N	104°24'30.465"W	0.00	
3317.00†	5.850	37.290	3303.87	-197.87	208.47	158.75	40°22'36.524"N	104°24'30.385"W	0.00	
3417.00†	5.850	37.290	3403.34	-205.56	216.58	164.93	40°22'36.604"N	104°24'30.305"W	0.00	
3517.00†	5.850	37.290	3502.82	-213.26	224.69	171.10	40°22'36.684"N	104°24'30.225"W	0.00	
3617.00†	5.850	37.290	3602.30	-220.95	232.80	177.28	40°22'36.764"N	104°24'30.145"W	0.00	
3717.00†	5.850	37.290	3701.78	-228.65	240.91	183.45	40°22'36.845"N	104°24'30.066"W	0.00	
3817.00†	5.850	37.290	3801.26	-236.35	249.01	189.63	40°22'36.925"N	104°24'29.986"W	0.00	
3917.00†	5.850	37.290	3900.74	-244.04	257.12	195.80	40°22'37.005"N	104°24'29.906"W	0.00	
4017.00†	5.850	37.290	4000.22	-251.74	265.23	201.98	40°22'37.085"N	104°24'29.826"W	0.00	
4117.00†	5.850	37.290	4099.70	-259.44	273.34	208.15	40°22'37.165"N	104°24'29.746"W	0.00	
4217.00†	5.850	37.290	4199.18	-267.13	281.45	214.33	40°22'37.245"N	104°24'29.667"W	0.00	
4317.00†	5.850	37.290	4298.66	-274.83	289.56	220.50	40°22'37.325"N	104°24'29.587"W	0.00	
4417.00†	5.850	37.290	4398.14	-282.53	297.67	226.68	40°22'37.405"N	104°24'29.507"W	0.00	
4517.00†	5.850	37.290	4497.62	-290.22	305.78	232.86	40°22'37.486"N	104°24'29.427"W	0.00	
4617.00†	5.850	37.290	4597.10	-297.92	313.89	239.03	40°22'37.566"N	104°24'29.347"W	0.00	
4717.00†	5.850	37.290	4696.57	-305.62	321.99	245.21	40°22'37.646"N	104°24'29.268"W	0.00	
4817.00†	5.850	37.290	4796.05	-313.31	330.10	251.38	40°22'37.726"N	104°24'29.188"W	0.00	
4917.00†	5.850	37.290	4895.53	-321.01	338.21	257.56	40°22'37.806"N	104°24'29.108"W	0.00	
5017.00†	5.850	37.290	4995.01	-328.70	346.32	263.73	40°22'37.886"N	104°24'29.028"W	0.00	
5117.00†	5.850	37.290	5094.49	-336.40	354.43	269.91	40°22'37.966"N	104°24'28.949"W	0.00	
5217.00†	5.850	37.290	5193.97	-344.10	362.54	276.08	40°22'38.046"N	104°24'28.869"W	0.00	
5317.00†	5.850	37.290	5293.45	-351.79	370.65	282.26	40°22'38.127"N	104°24'28.789"W	0.00	
5417.00†	5.850	37.290	5392.93	-359.49	378.76	288.43	40°22'38.207"N	104°24'28.709"W	0.00	
5517.00†	5.850	37.290	5492.41	-367.19	386.87	294.61	40°22'38.287"N	104°24'28.629"W	0.00	
5617.00†	5.850	37.290	5591.89	-374.88	394.97	300.78	40°22'38.367"N	104°24'28.550"W	0.00	



Planned Wellpath Report

STATE NORTH PLATTE F-J-26HNB (REV-A.1) PWP
Page 4 of 7



REFERENCE WELLPATH IDENTIFICATION

Operator	BONANZA CREEK OIL COMPANY	Slot	SLOT#01 STATE NORTH PLATTE F-J-26HNB (457'FNL & 956'FWL,SEC.26)
Area	COLORADO	Well	STATE NORTH PLATTE F-J-26HNB
Field	WELD COUNTY	Wellbore	STATE NORTH PLATTE F-J-26HNB PWB
Facility	SEC.26-T5N-R63W		

WELLPATH DATA (118 stations) † = interpolated/extrapolated station

MD [ft]	Inclination [°]	Azimuth [°]	TVD [ft]	Vert Sect [ft]	North [ft]	East [ft]	Latitude	Longitude	DLS [°/100ft]	Comments
5717.00†	5.850	37.290	5691.37	-382.58	403.08	306.96	40°22'38.447"N	104°24'28.470"W	0.00	
5790.95	5.850	37.290	5764.93	-388.27	409.08	311.52	40°22'38.506"N	104°24'28.411"W	0.00	End of Tangent
5817.00†	3.888	62.616	5790.89	-389.63	410.54	313.11	40°22'38.521"N	104°24'28.390"W	11.00	
5917.00†	9.702	161.688	5890.36	-382.82	404.08	318.79	40°22'38.457"N	104°24'28.317"W	11.00	
6017.00†	20.368	172.781	5986.82	-357.22	378.74	323.64	40°22'38.207"N	104°24'28.254"W	11.00	
6117.00†	31.261	176.363	6076.71	-313.77	335.45	327.48	40°22'37.779"N	104°24'28.205"W	11.00	
6217.00†	42.206	178.218	6156.73	-254.07	275.80	330.18	40°22'37.189"N	104°24'28.170"W	11.00	
6317.00†	53.171	179.421	6223.95	-180.30	201.98	331.63	40°22'36.460"N	104°24'28.151"W	11.00	
6417.00†	64.144	180.318	6275.89	-95.19	116.70	331.79	40°22'35.617"N	104°24'28.149"W	11.00	
6470.35	70.000	180.728	6296.66	-46.22	67.59	331.34	40°22'35.132"N	104°24'28.155"W	11.00	End of 3D Arc
6505.35†	70.000	180.728	6308.63	-13.42	34.70	330.92	40°22'34.807"N	104°24'28.160"W	0.00	4.5" Hanging Liner
6517.00†	70.000	180.728	6312.61	-2.51	23.76	330.78	40°22'34.699"N	104°24'28.162"W	0.00	
6540.35	70.000	180.728	6320.60	19.37	1.82	330.50	40°22'34.482"N	104°24'28.166"W	0.00	End of Tangent
6617.00†	78.432	180.728	6341.43	92.85	-71.87	329.56	40°22'33.754"N	104°24'28.178"W	11.00	
6717.00†	89.432	180.728	6351.99	191.84	-171.15	328.30	40°22'32.773"N	104°24'28.194"W	11.00	
6722.17	90.000	180.728	6352.01	196.99	-176.31	328.24	40°22'32.722"N	104°24'28.195"W	11.00	End of 3D Arc
6817.00†	90.000	180.728	6352.01	291.55	-271.14	327.03	40°22'31.785"N	104°24'28.211"W	0.00	
6917.00†	90.000	180.728	6352.01	391.25	-371.13	325.76	40°22'30.797"N	104°24'28.227"W	0.00	
7017.00†	90.000	180.728	6352.01	490.96	-471.13	324.49	40°22'29.808"N	104°24'28.243"W	0.00	
7117.00†	90.000	180.728	6352.01	590.66	-571.12	323.22	40°22'28.820"N	104°24'28.260"W	0.00	
7217.00†	90.000	180.728	6352.01	690.37	-671.11	321.95	40°22'27.832"N	104°24'28.276"W	0.00	
7317.00†	90.000	180.728	6352.01	790.07	-771.10	320.68	40°22'26.844"N	104°24'28.293"W	0.00	
7417.00†	90.000	180.728	6352.01	889.77	-871.09	319.40	40°22'25.856"N	104°24'28.309"W	0.00	
7517.00†	90.000	180.728	6352.01	989.48	-971.08	318.13	40°22'24.868"N	104°24'28.326"W	0.00	
7617.00†	90.000	180.728	6352.01	1089.18	-1071.08	316.86	40°22'23.880"N	104°24'28.342"W	0.00	
7717.00†	90.000	180.728	6352.01	1188.89	-1171.07	315.59	40°22'22.892"N	104°24'28.358"W	0.00	
7817.00†	90.000	180.728	6352.01	1288.59	-1271.06	314.32	40°22'21.904"N	104°24'28.375"W	0.00	
7917.00†	90.000	180.728	6352.01	1388.30	-1371.05	313.05	40°22'20.916"N	104°24'28.391"W	0.00	
8017.00†	90.000	180.728	6352.01	1488.00	-1471.04	311.78	40°22'19.928"N	104°24'28.408"W	0.00	
8117.00†	90.000	180.728	6352.01	1587.71	-1571.04	310.51	40°22'18.939"N	104°24'28.424"W	0.00	



Planned Wellpath Report

STATE NORTH PLATTE F-J-26HNB (REV-A.1) PWP
Page 5 of 7



REFERENCE WELLPATH IDENTIFICATION

Operator	BONANZA CREEK OIL COMPANY	Slot	SLOT#01 STATE NORTH PLATTE F-J-26HNB (457'FNL & 956'FWL,SEC.26)
Area	COLORADO	Well	STATE NORTH PLATTE F-J-26HNB
Field	WELD COUNTY	Wellbore	STATE NORTH PLATTE F-J-26HNB PWB
Facility	SEC.26-T5N-R63W		

WELLPATH DATA (118 stations) † = interpolated/extrapolated station

MD [ft]	Inclination [°]	Azimuth [°]	TVD [ft]	Vert Sect [ft]	North [ft]	East [ft]	Latitude	Longitude	DLS [°/100ft]	Comments
8217.00†	90.000	180.728	6352.01	1687.41	-1671.03	309.24	40°22'17.951"N	104°24'28.441"W	0.00	
8317.00†	90.000	180.728	6352.01	1787.12	-1771.02	307.97	40°22'16.963"N	104°24'28.457"W	0.00	
8417.00†	90.000	180.728	6352.01	1886.82	-1871.01	306.69	40°22'15.975"N	104°24'28.474"W	0.00	
8517.00†	90.000	180.728	6352.01	1986.53	-1971.00	305.42	40°22'14.987"N	104°24'28.490"W	0.00	
8617.00†	90.000	180.728	6352.01	2086.23	-2071.00	304.15	40°22'13.999"N	104°24'28.506"W	0.00	
8717.00†	90.000	180.728	6352.01	2185.94	-2170.99	302.88	40°22'13.011"N	104°24'28.523"W	0.00	
8817.00†	90.000	180.728	6352.01	2285.64	-2270.98	301.61	40°22'12.023"N	104°24'28.539"W	0.00	
8917.00†	90.000	180.728	6352.01	2385.35	-2370.97	300.34	40°22'11.035"N	104°24'28.556"W	0.00	
9017.00†	90.000	180.728	6352.01	2485.05	-2470.96	299.07	40°22'10.047"N	104°24'28.572"W	0.00	
9117.00†	90.000	180.728	6352.00	2584.76	-2570.96	297.80	40°22'09.059"N	104°24'28.589"W	0.00	
9217.00†	90.000	180.728	6352.00	2684.46	-2670.95	296.53	40°22'08.071"N	104°24'28.605"W	0.00	
9317.00†	90.000	180.728	6352.00	2784.17	-2770.94	295.26	40°22'07.082"N	104°24'28.621"W	0.00	
9417.00†	90.000	180.728	6352.00	2883.87	-2870.93	293.99	40°22'06.094"N	104°24'28.638"W	0.00	
9517.00†	90.000	180.728	6352.00	2983.58	-2970.92	292.71	40°22'05.106"N	104°24'28.654"W	0.00	
9617.00†	90.000	180.728	6352.00	3083.28	-3070.92	291.44	40°22'04.118"N	104°24'28.671"W	0.00	
9717.00†	90.000	180.728	6352.00	3182.99	-3170.91	290.17	40°22'03.130"N	104°24'28.687"W	0.00	
9817.00†	90.000	180.728	6352.00	3282.69	-3270.90	288.90	40°22'02.142"N	104°24'28.704"W	0.00	
9917.00†	90.000	180.728	6352.00	3382.40	-3370.89	287.63	40°22'01.154"N	104°24'28.720"W	0.00	
10017.00†	90.000	180.728	6352.00	3482.10	-3470.88	286.36	40°22'00.166"N	104°24'28.737"W	0.00	
10117.00†	90.000	180.728	6352.00	3581.81	-3570.87	285.09	40°21'59.178"N	104°24'28.753"W	0.00	
10217.00†	90.000	180.728	6352.00	3681.51	-3670.87	283.82	40°21'58.190"N	104°24'28.769"W	0.00	
10317.00†	90.000	180.728	6352.00	3781.21	-3770.86	282.55	40°21'57.202"N	104°24'28.786"W	0.00	
10417.00†	90.000	180.728	6352.00	3880.92	-3870.85	281.28	40°21'56.213"N	104°24'28.802"W	0.00	
10517.00†	90.000	180.728	6352.00	3980.62	-3970.84	280.00	40°21'55.225"N	104°24'28.819"W	0.00	
10617.00†	90.000	180.728	6352.00	4080.33	-4070.83	278.73	40°21'54.237"N	104°24'28.835"W	0.00	
10717.00†	90.000	180.728	6352.00	4180.03	-4170.83	277.46	40°21'53.249"N	104°24'28.852"W	0.00	
10817.00†	90.000	180.728	6352.00	4279.74	-4270.82	276.19	40°21'52.261"N	104°24'28.868"W	0.00	
10841.40	90.000	180.728	6352.00 ¹	4304.07	-4295.22	275.88	40°21'52.020"N	104°24'28.872"W	0.00	End of Tangent



Planned Wellpath Report

STATE NORTH PLATTE F-J-26HNB (REV-A.1) PWP

Page 6 of 7



REFERENCE WELLPATH IDENTIFICATION

Operator	BONANZA CREEK OIL COMPANY	Slot	SLOT#01 STATE NORTH PLATTE F-J-26HNB (457'FNL & 956'FWL,SEC.26)
Area	COLORADO	Well	STATE NORTH PLATTE F-J-26HNB
Field	WELD COUNTY	Wellbore	STATE NORTH PLATTE F-J-26HNB PWB
Facility	SEC.26-T5N-R63W		

HOLE & CASING SECTIONS -

Ref Wellbore: STATE NORTH PLATTE F-J-26HNB PWB Ref Wellpath: STATE NORTH PLATTE F-J-26HNB (REV-A.1) PWP

String/Diameter	Start MD [ft]	End MD [ft]	Interval [ft]	Start TVD [ft]	End TVD [ft]	Start N/S [ft]	Start E/W [ft]	End N/S [ft]	End E/W [ft]
7in Casing Intermediate	17.00	6722.17	6705.17	17.00	6352.01	0.00	0.00	-176.32	328.24
6.125in Open Hole	17.00	10841.40	10824.40	17.00	NA	0.00	0.00	NA	NA
4.5in Casing Production	17.00	10841.00	10824.00	17.00	6352.00	0.00	0.00	-4294.82	275.89

TARGETS

Name	MD [ft]	TVD [ft]	North [ft]	East [ft]	Grid East [US ft]	Grid North [US ft]	Latitude	Longitude	Shape
STATE NORTH PLATTE F-J-26HNB SECTION 26		0.00	0.00	0.00	3303950.84	1381774.54	40°22'34.464"N	104°24'32.436"W	polygon
1) STATE NORTH PLATTE F-J-26HNB BHL From Plat Rev-1 (460'FSL & 1290'FWL, SEC.26)	10841.40	6352.00	-4295.22	275.88	3304279.53	1377483.22	40°21'52.020"N	104°24'28.872"W	point
STATE NORTH PLATTE F-J-26HNB HARDLINE (460' SETBACKS)		6352.00	0.00	0.00	3303950.84	1381774.54	40°22'34.464"N	104°24'32.436"W	polygon
STATE NORTH PLATTE F-J-26HNB TARGET		6352.00	-76.50	331.56	3304283.30	1381702.12	40°22'33.708"N	104°24'28.152"W	point
Ex.STATE #1-26 (500' Radius)		7075.00	-2753.53	3557.52	3307541.81	1379065.10	40°22'07.252"N	104°23'46.475"W	circle

SURVEY PROGRAM -

Ref Wellbore: STATE NORTH PLATTE F-J-26HNB PWB Ref Wellpath: STATE NORTH PLATTE F-J-26HNB (REV-A.1) PWP

Start MD [ft]	End MD [ft]	Positional Uncertainty Model	Log Name/Comment	Wellbore
17.00	10841.40	NaviTrak (Standard)		STATE NORTH PLATTE F-J-26HNB PWB



Planned Wellpath Report

STATE NORTH PLATTE F-J-26HNB (REV-A.1) PWP
Page 7 of 7



REFERENCE WELLPATH IDENTIFICATION

Operator	BONANZA CREEK OIL COMPANY	Slot	SLOT#01 STATE NORTH PLATTE F-J-26HNB (457'FNL & 956'FWL,SEC.26)
Area	COLORADO	Well	STATE NORTH PLATTE F-J-26HNB
Field	WELD COUNTY	Wellbore	STATE NORTH PLATTE F-J-26HNB PWB
Facility	SEC.26-T5N-R63W		

WELLPATH COMMENTS

MD [ft]	Inclination [°]	Azimuth [°]	TVD [ft]	Comment
6505.35	70.000	180.728	6308.63	4.5" Hanging Liner

DESIGN COMMENTS

MD [ft]	Inclination [°]	Azimuth [°]	TVD [ft]	Comment
17.00	0.000	37.290	17.00	Tie On
600.00	0.000	37.290	600.00	End of Tangent
892.50	5.850	37.290	891.99	End of Build
5790.95	5.850	37.290	5764.93	End of Tangent
6470.35	70.000	180.728	6296.66	End of 3D Arc
6540.35	70.000	180.728	6320.60	End of Tangent
6722.17	90.000	180.728	6352.01	End of 3D Arc
10841.40	90.000	180.728	6352.00	End of Tangent