

\\ANADARKO\2013\2013_33_WATTENBERG_T1_R67_SEC_8889\PLATS\SECTION 8\NRC 4N-8HZ PLATS\HARDLINES\NRC 4C-8HZ HARDLINE SHEET 1.dwg, 5/10/2013 10:57:20 AM, andy



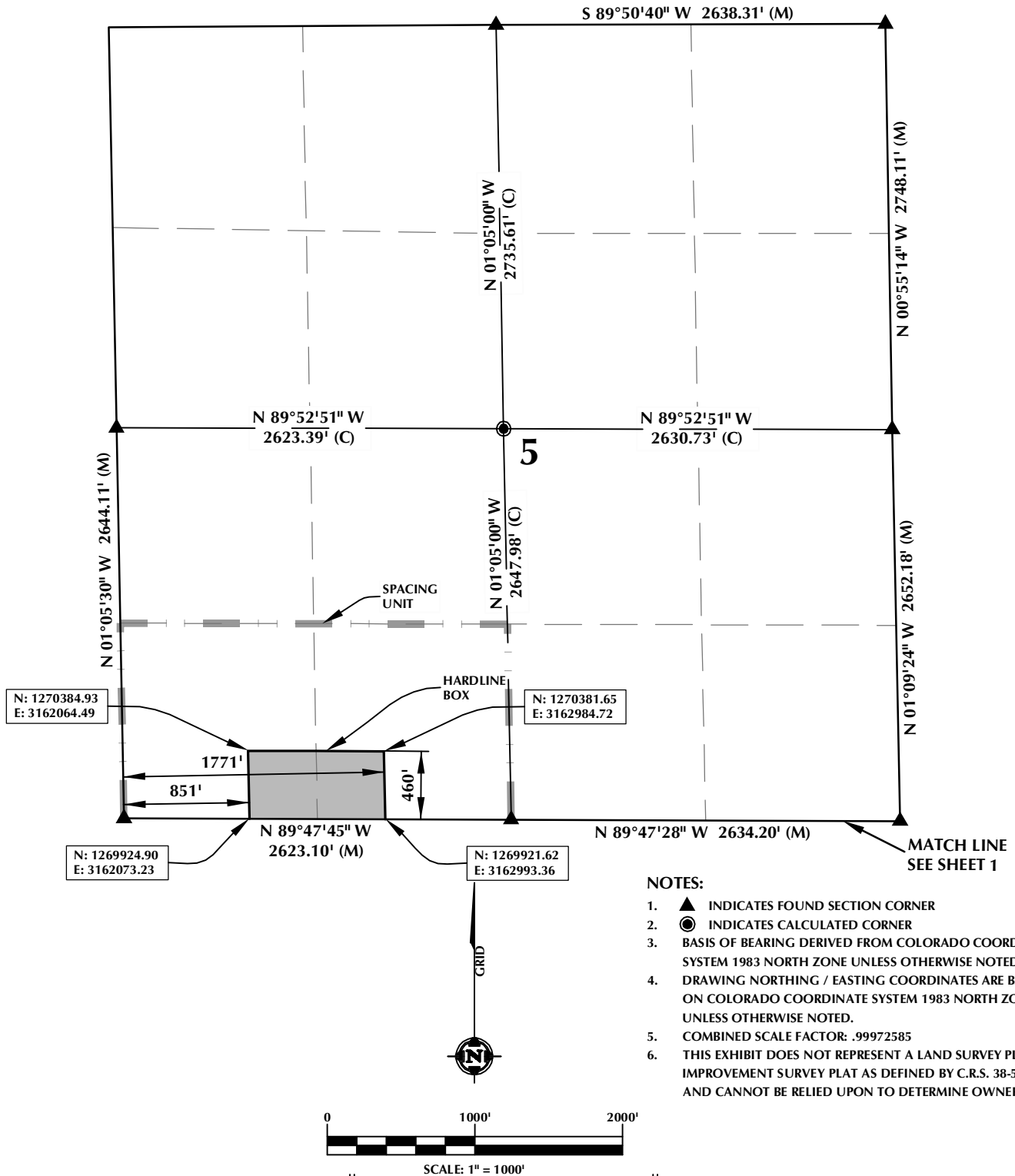
**Kerr-McGee Oil &
Gas Onshore L.P.**

CONSULTING, LLC

2155 North Main Street
Sheridan, Wyoming 82801
Phone 307-674-0609
Fax 307-674-0182

DRAFTED BY:	APF	CHECKED BY:	BJR	SHEET NO: 1 1 OF 3
DATE DRAFTED:	5/10/13	DATE SURVEYED:	4/22/13	
REVISED:		FILE NAME:	13-33	

SPACING UNIT: NRC 4C-8HZ T1N, R67W



WELL PAD - NRC 4N-8HZ

NRC 4C-8HZ
SPACING UNIT EXHIBIT
1' FSL & 1105' FWL SWSW (HEEL)
1' FNL & 1105' FWL NWNW (BOTTOM)
LOCATED IN SECTION 8
T1N, R67W, 6TH P.M.
WELD COUNTY, COLORADO

**Kerr-McGee Oil &
Gas Onshore L.P.**
1099 18th Street
Denver, Colorado 80202

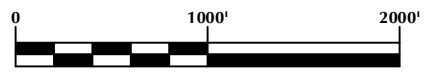
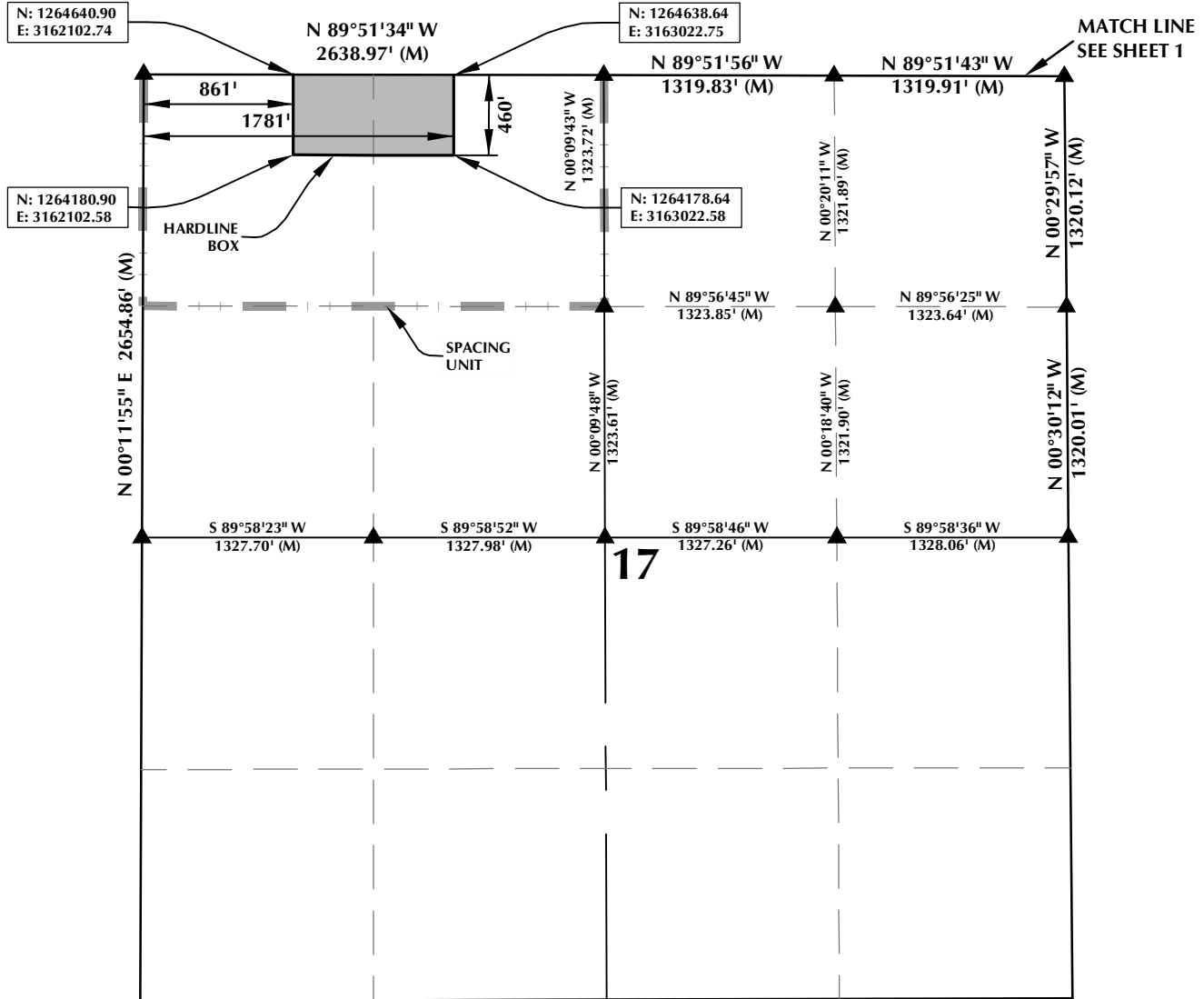


CONSULTING, LLC

2155 North Main Street
Sheridan, Wyoming 82801
Phone 307-674-0609
Fax 307-674-0182

DRAFTED BY:	APF	CHECKED BY:	BJR	SHEET NO:
DATE DRAFTED:	5/10/13	DATE SURVEYED:	4/22/13	2
REVISED:		FILE NAME:	13-33	2 OF 3

SPACING UNIT: NRC 4C-8HZ T1N, R67W



SCALE: 1" = 1000'

NOTES:

1. ▲ INDICATES FOUND SECTION CORNER
2. ● INDICATES CALCULATED CORNER
3. BASIS OF BEARING DERIVED FROM COLORADO COORDINATE SYSTEM 1983 NORTH ZONE UNLESS OTHERWISE NOTED.
4. DRAWING NORTHING / EASTING COORDINATES ARE BASED ON COLORADO COORDINATE SYSTEM 1983 NORTH ZONE UNLESS OTHERWISE NOTED.
5. COMBINED SCALE FACTOR: .99972585
6. THIS EXHIBIT DOES NOT REPRESENT A LAND SURVEY PLAT OR IMPROVEMENT SURVEY PLAT AS DEFINED BY C.R.S. 38-51-102 AND CANNOT BE RELIED UPON TO DETERMINE OWNERSHIP.

WELL PAD - NRC 4N-8HZ

NRC 4C-8HZ
SPACING UNIT EXHIBIT
1' FSL & 1105' FWL SWSW (HEEL)
1' FNL & 1105' FWL NWNW (BOTTOM)
LOCATED IN SECTION 8
T1N, R67W, 6TH P.M.
WELD COUNTY, COLORADO

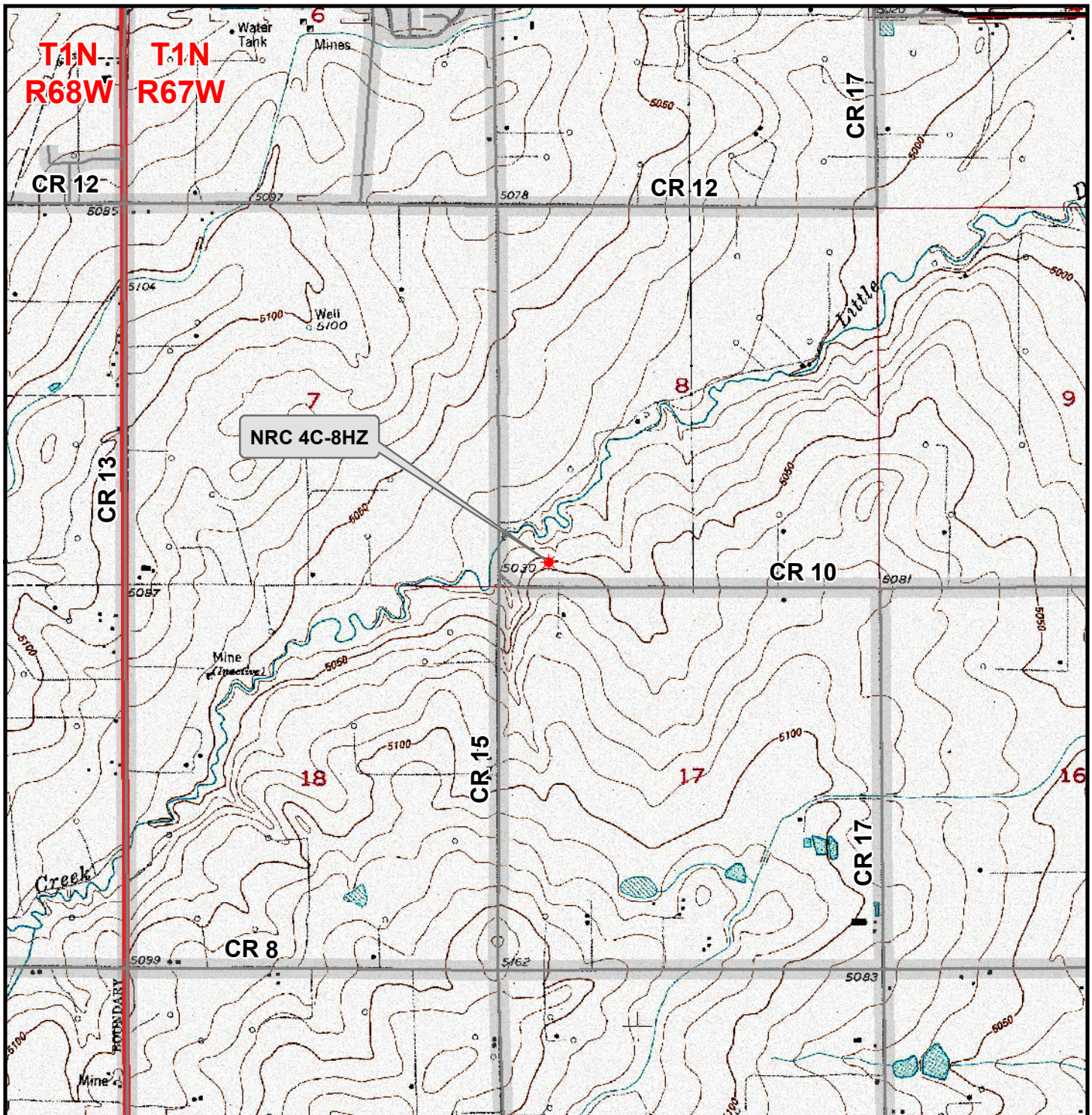
Kerr-McGee Oil &
Gas Onshore L.P.
1099 18th Street
Denver, Colorado 80202



CONSULTING, LLC
2155 North Main Street
Sheridan, Wyoming 82801
Phone 307-674-0609
Fax 307-674-0182

DRAFTED BY:	APF	CHECKED BY:	BJR	SHEET NO:
DATE DRAFTED:	5/10/13	DATE SURVEYED:	4/22/13	3
REVISED:		FILE NAME:	13-33	3 OF 3

K:\ANADARKO\2013\2013_33_WATTENBERG_T1_R67_SEC_889\GIS\NRC_4N-8HZ\NRC_4C-8HZ.mxd 5/13/2013 11:46:59 AM



Legend

- ★ Well - Fee - Proposed === Road - Primitive - Existing — Road - County - Existing
— Road - Improved - Existing — Road - Highway - Existing

WELL PAD - NRC 4N-8HZ
GENERAL LOCATION MAP
NRC 4C-8HZ
LOCATED IN SECTION 8
T1N, R67W, 6th P.M.
WELD COUNTY, COLORADO

**Kerr-McGee Oil &
Gas Onshore L.P.**

1099 18th Street
Denver, Colorado 80202



CONSULTING, LLC
2155 North Main Street
Sheridan, Wyoming 82801
Phone 307-674-0609
Fax 307-674-0182



SCALE: 1" = 2,000ft

NAD83 CO-Nft

DRAWN: JELo

DATE: 9 May 2013

REVISED:

DATE: