

Target Bottom Hole T6S, R96W, 6th P.M.

WPX Energy Rocky Mountain, LLC

Well location, GM 14-21 (SURFACE LOCATION), located as shown in LOT 4 of Section 28, T6S, R96W, 6th P.M., Garfield County, Colorado.

### BASIS OF ELEVATION

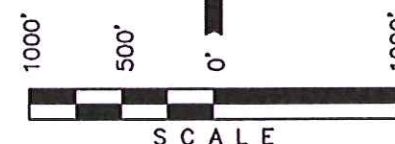
SPOT ELEVATION AT THE NORTHWEST CORNER OF SECTION 30, T5S, R95W, 6th P.M. TAKEN FROM THE FORKED GULCH QUADRANGLE, COLORADO, GARFIELD COUNTY, 7.5 MINUTE SERIES (TOPOGRAPHICAL MAP) PUBLISHED BY THE UNITED STATES DEPARTMENT OF THE INTERIOR, GEOLOGICAL SURVEY. SAID ELEVATION IS MARKED AS BEING 5966 FEET.

### BASIS OF BEARINGS

BASIS OF BEARINGS IS A G.P.S. OBSERVATION.

### LEGEND:

- └ = 90° SYMBOL
- = PROPOSED WELL HEAD.
- ▲ = SECTION CORNERS LOCATED.
- △ = SECTION CORNERS RE-ESTABLISHED. (Not Set on Ground.)



### CERTIFICATE

THIS IS TO CERTIFY THAT THE ABOVE PLAT WAS PREPARED AND LOCATION AS SHOWN WAS STAKED ON THE GROUND FROM FIELD NOTES OF ACTUAL SURVEYS MADE BY ME OR UNDER MY CLOSE SUPERVISION AND THAT THE SAME ARE TRUE AND CORRECT TO THE BEST OF MY KNOWLEDGE AND BELIEF.

REGISTERED LAND SURVEYOR  
REGISTRATION NO. 12492  
STATE OF COLORADO  
07-02-13

UINTAH ENGINEERING & LAND SURVEYING

85 SOUTH 200 EAST - VERNAL, UTAH 84078

(435) 789-1017

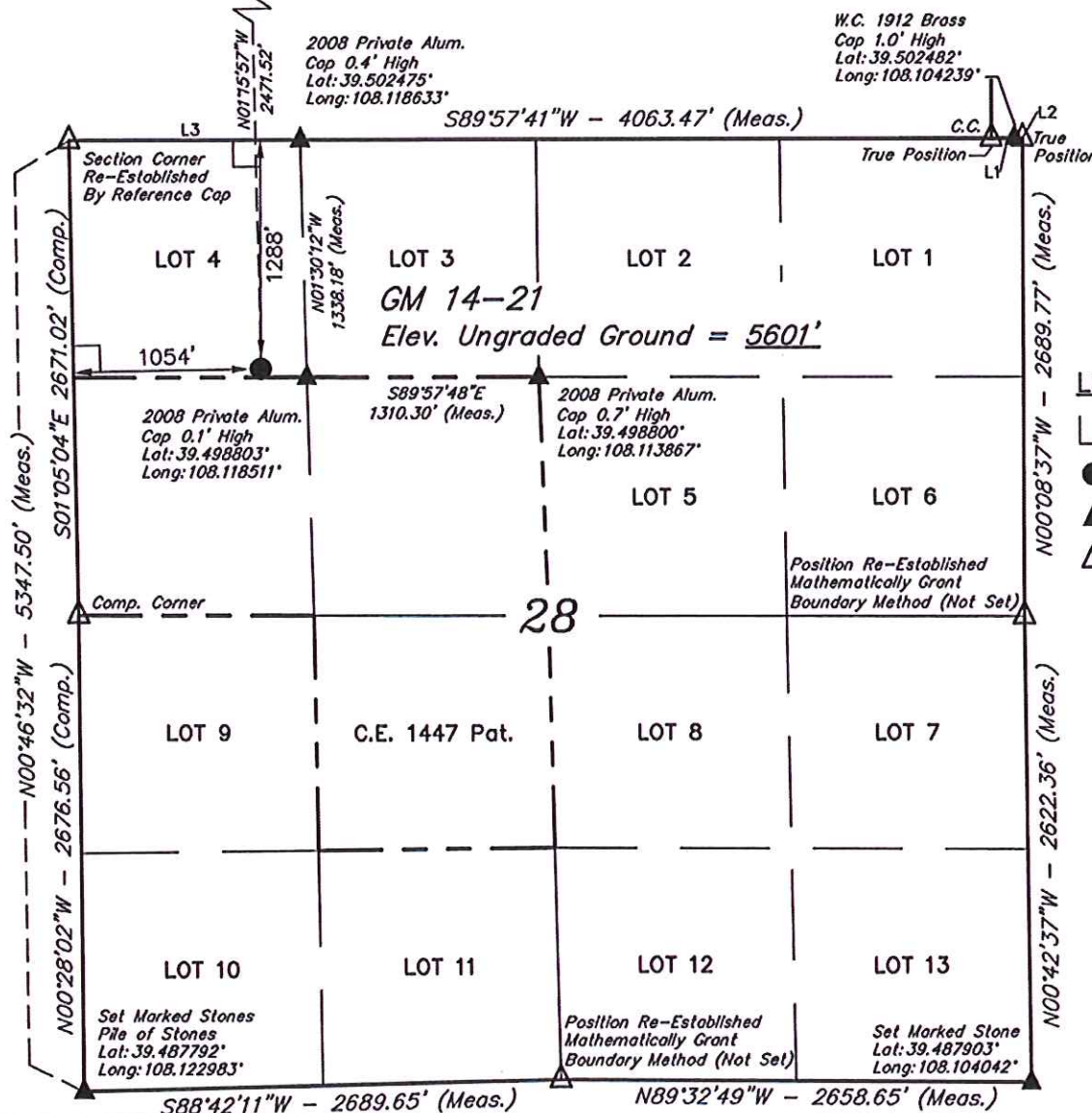
PDOP = 1.8

NAD 83 (SURFACE LOCATION)  
LATITUDE = 39°29'56.18" (39.498939)  
LONGITUDE = 108°07'09.92" (108.119422)  
STATE PLANE-(COLO. CENTRAL-NAD 83)  
N = 1617272.98  
E = 2260931.04

NOTE:  
THE PROPOSED TARGET BOTTOM HOLE FOR THIS WELL IS LOCATED IN LOT 3 OF SECTION 21, T6S, R96W, 6th P.M. AT 1183' FSL 982' FWL. IT BEARS N01°15'57"W 2471.52' FROM THE PROPOSED WELL HEAD.

### LINE TABLE

| LINE | DIRECTION   | LENGTH   |
|------|-------------|----------|
| L1   | S89°56'58"W | 158.40'  |
| L2   | S89°56'58"W | 16.50'   |
| L3   | S89°54'43"W | 1300.69' |





NE Cor Sec 20  
Pile of Stones  
Lat: 39.517033°  
Long: 108.123377°

T6S, R96W, 6th P.M.

WPX Energy Rocky Mountain, LLC

Well location, GM 14-21 (TARGET BOTTOM HOLE),  
located as shown in LOT 3 of Section 21, T6S,  
R96W, 6th P.M., Garfield County, Colorado.

### BASIS OF ELEVATION

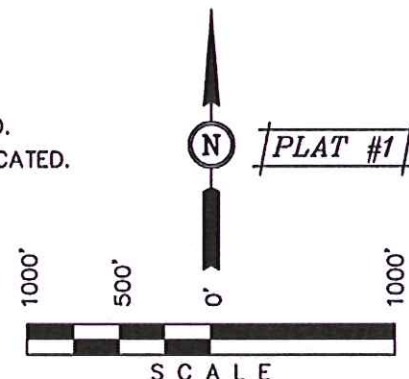
SPOT ELEVATION AT THE NORTHWEST CORNER OF SECTION  
30, T5S, R95W, 6th P.M. TAKEN FROM THE FORKED GULCH  
QUADRANGLE, COLORADO, GARFIELD COUNTY, 7.5 MINUTE  
SERIES (TOPOGRAPHICAL MAP) PUBLISHED BY THE UNITED  
STATES DEPARTMENT OF THE INTERIOR, GEOLOGICAL SURVEY.  
SAID ELEVATION IS MARKED AS BEING 5966 FEET.

### BASIS OF BEARINGS

BASIS OF BEARINGS IS A G.P.S. OBSERVATION.

### LEGEND:

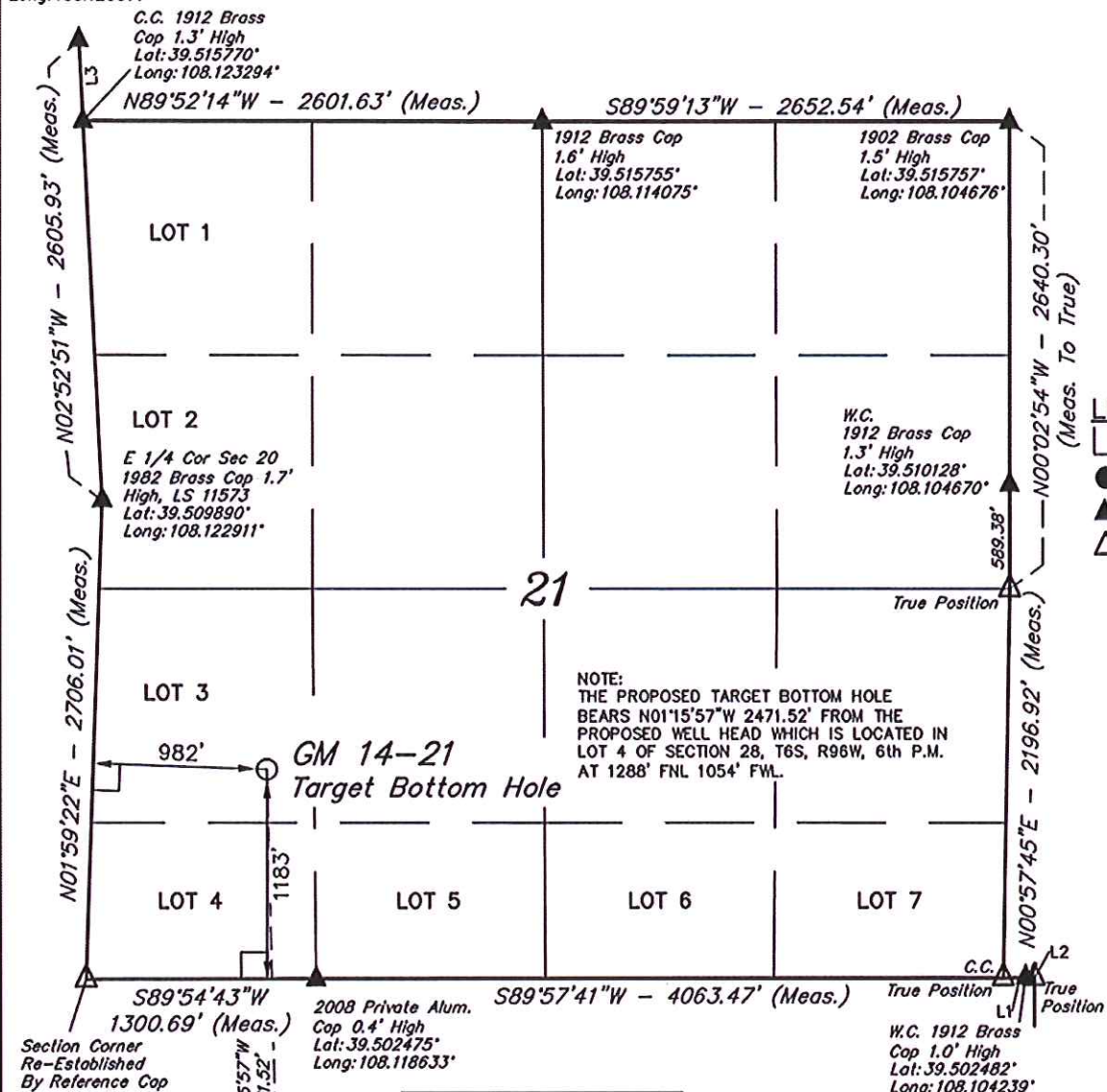
- └ = 90° SYMBOL
- = PROPOSED WELL HEAD.
- ▲ = SECTION CORNERS LOCATED.
- △ = SECTION CORNERS  
RE-ESTABLISHED.  
(Not Set on Ground.)



### CERTIFICATE

THIS IS TO CERTIFY THAT THE ABOVE PLAT WAS PREPARED AND  
LOCATION AS SHOWN WAS STAKED ON THE GROUND FROM FIELD  
NOTES OF ACTUAL SURVEYS MADE BY ME OR UNDER MY  
SUPERVISION AND THAT THE SAME ARE TRUE AND CORRECT TO THE  
BEST OF MY KNOWLEDGE AND BELIEF.

REGISTERED LAND SURVEYOR  
REGISTRATION NO. 12492  
STATE OF COLORADO  
07-02-13



### LINE TABLE

| LINE | DIRECTION    | LENGTH  |
|------|--------------|---------|
| L1   | S89°56'58\"W | 158.40' |
| L2   | S89°56'58\"W | 16.50'  |
| L3   | N02°53'50\"W | 460.83' |

NAD 83 (TARGET BOTTOM HOLE)  
LATITUDE = 39°30'20.59\" (39.505719)  
LONGITUDE = 108°07'10.62\" (108.119617)  
STATE PLANE-(COLO. CENTRAL-NAD 83)  
N = 1619743.66  
E = 2260947.40

UINTAH ENGINEERING & LAND SURVEYING  
85 SOUTH 200 EAST - VERNAL, UTAH 84078  
(435) 789-1017

|                         |  |                         |
|-------------------------|--|-------------------------|
| SCALE<br>1" = 1000'     | DATE SURVEYED:<br>04-13-12             | DATE DRAWN:<br>07-02-13 |
| PARTY<br>B.B. C.C. M.D. | REFERENCES<br>G.L.O. PLAT              |                         |
| WEATHER<br>WARM         | FILE<br>WPX Energy Rocky Mountain, LLC |                         |

Surface Location ●