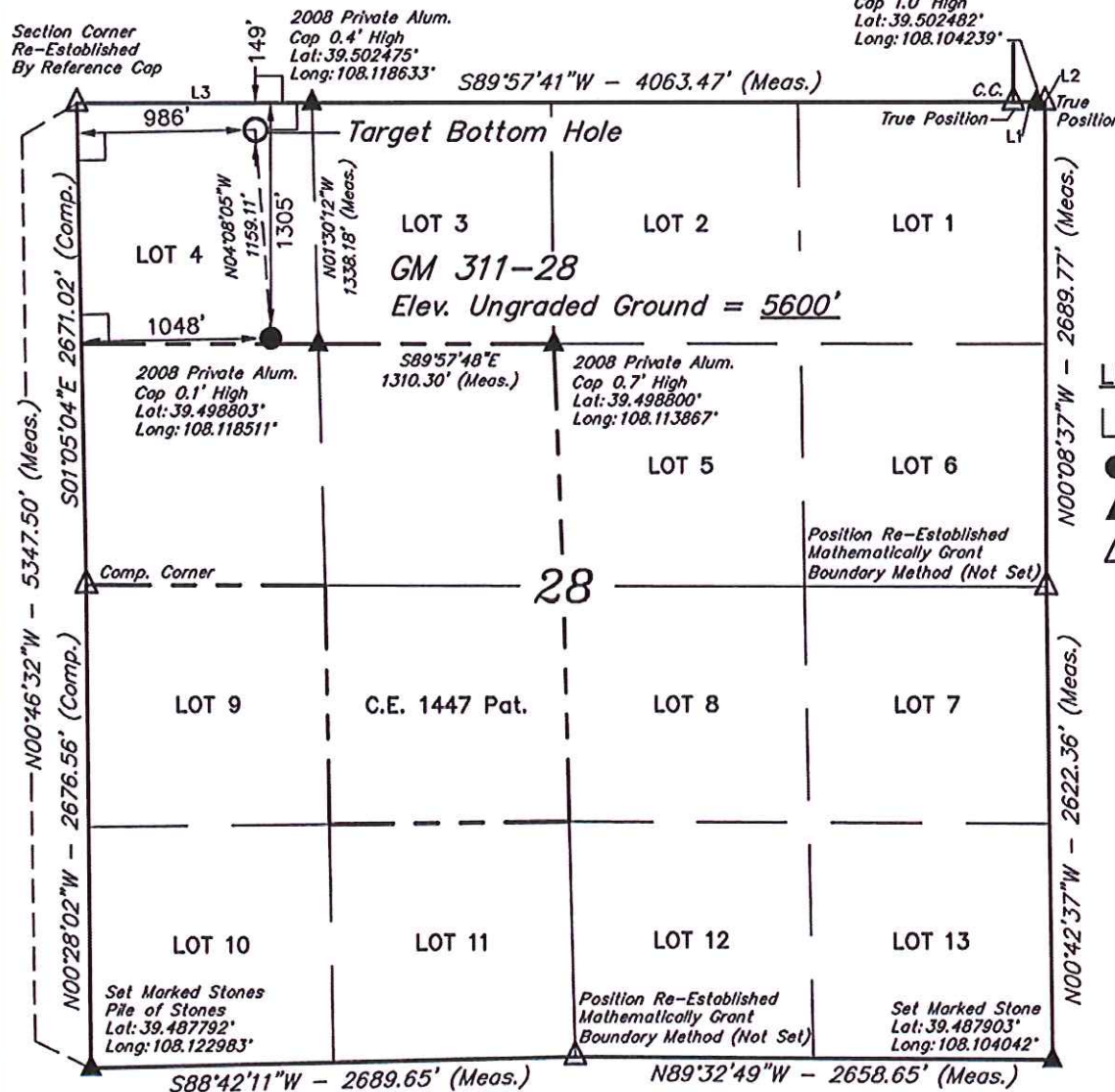


T6S, R96W, 6th P.M.

WPX Energy Rocky Mountain, LLC

Well location, GM 311-28, located as shown in LOT 4 of Section 28, T6S, R96W, 6th P.M., Garfield County, Colorado.



BASIS OF ELEVATION

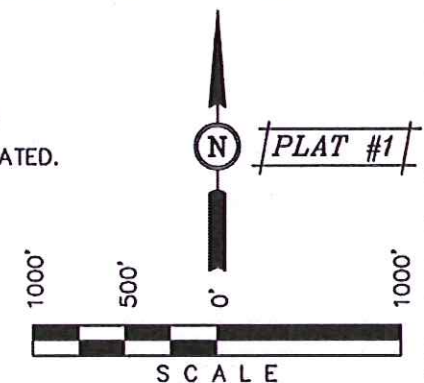
SPOT ELEVATION AT THE NORTHWEST CORNER OF SECTION 30, T5S, R95W, 6th P.M. TAKEN FROM THE FORKED GULCH QUADRANGLE, COLORADO, GARFIELD COUNTY, 7.5 MINUTE SERIES (TOPOGRAPHICAL MAP) PUBLISHED BY THE UNITED STATES DEPARTMENT OF THE INTERIOR, GEOLOGICAL SURVEY. SAID ELEVATION IS MARKED AS BEING 5966 FEET.

BASIS OF BEARINGS

BASIS OF BEARINGS IS A G.P.S. OBSERVATION.

LEGEND:

- └ = 90° SYMBOL
- = PROPOSED WELL HEAD.
- ▲ = SECTION CORNERS LOCATED.
- △ = SECTION CORNERS RE-ESTABLISHED. (Not Set on Ground.)



CERTIFICATE

THIS IS TO CERTIFY THAT THE ABOVE PLAT WAS PREPARED AND LOCATION AS SHOWN WAS STAKED ON THE GROUND FROM FIELD NOTES OF ACTUAL SURVEYS MADE BY ME OR UNDER MY SUPERVISION AND THAT THE SAME ARE TRUE AND CORRECT TO THE BEST OF MY KNOWLEDGE AND BELIEF.

Robert J. Taylor
REGISTERED LAND SURVEYOR
REGISTRATION NO. 17492
STATE OF COLORADO
07-02-13

UINTAH ENGINEERING & LAND SURVEYING
85 SOUTH 200 EAST - VERNAL, UTAH 84078
(435) 789-1017

LINE TABLE

LINE	DIRECTION	LENGTH
L1	S89°56'58"W	158.40'
L2	S89°56'58"W	16.50'
L3	S89°54'43"W	1300.69'

PDOP = 1.8

NAD 83 (TARGET BOTTOM HOLE)

LATITUDE = 39°30'07.43" (39.502064)
LONGITUDE = 108°07'11.06" (108.119739)
STATE PLANE-(COLO. CENTRAL-NAD 83)
N = 1618413.74
E = 2260874.40

NAD 83 (SURFACE LOCATION)

LATITUDE = 39°29'56.01" (39.498892)
LONGITUDE = 108°07'09.99" (108.119442)
STATE PLANE-(COLO. CENTRAL-NAD 83)
N = 1617256.09
E = 2260924.73

SCALE 1" = 1000'	DATE SURVEYED: 04-13-12	DATE DRAWN: 07-02-13
PARTY B.B. C.C. M.D.	REFERENCES G.L.O. PLAT	
WEATHER WARM	FILE WPX Energy Rocky Mountain, LLC	