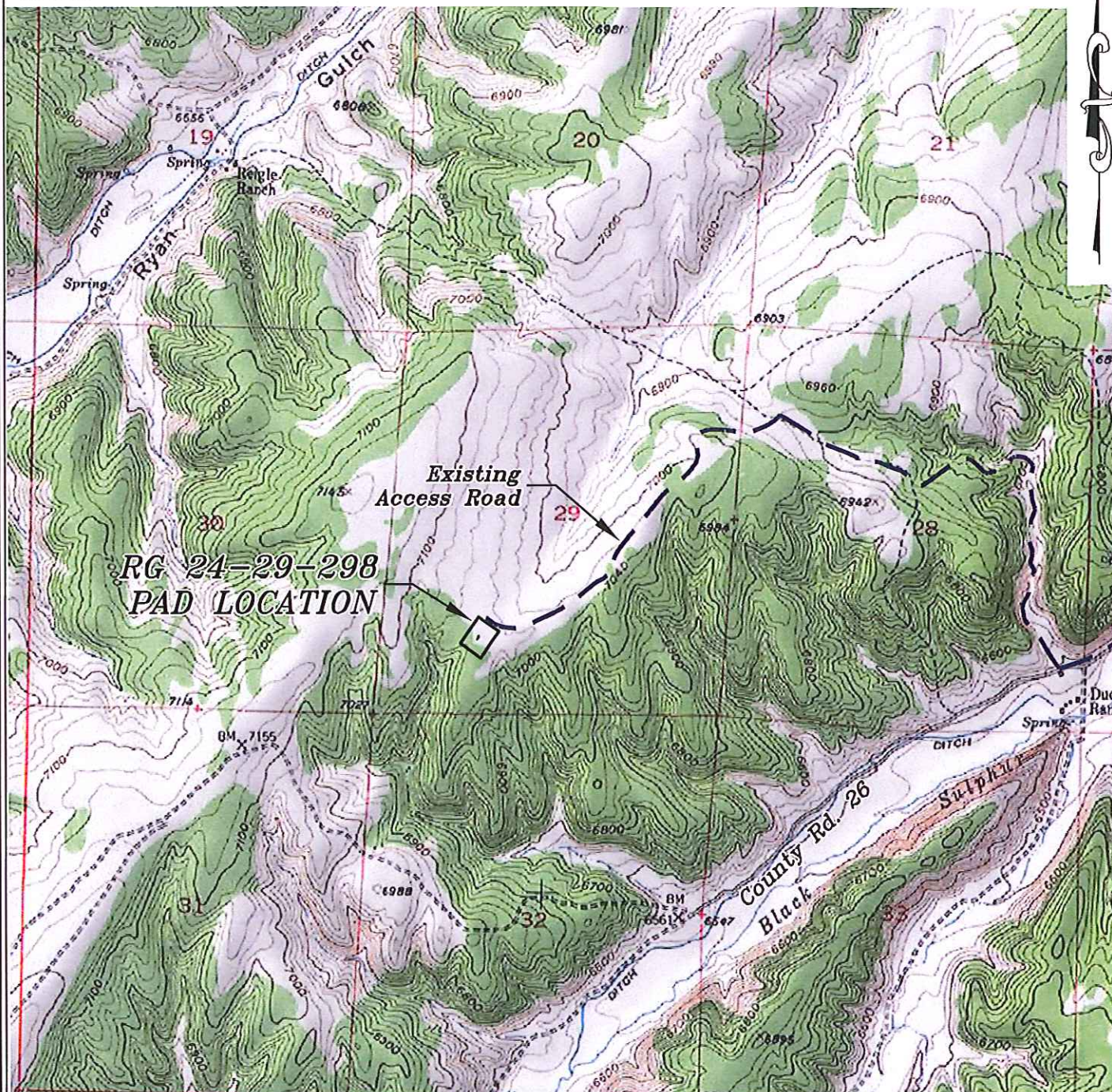


Section 29
T. 2 S., R 98 W
6th. P.M.



ACCESS DESCRIPTION:

FROM THE INTERSECTION OF STATE HIGHWAY 64 AND RIO BLANCO COUNTY ROAD 5 PROCEED SOUTHERLY ALONG COUNTY ROAD 5 ± 18.0 MILES TO THE INTERSECTION WITH COUNTY ROAD 26 (Mile Marker 23.4), PROCEED WESTERLY ALONG COUNTY ROAD 26 ± 6.3 MILES TO THE INTERSECTION WITH COUNTY ROAD 85, PROCEED RIGHT IN A NORTHERLY DIRECTION ± 1.4 MILES TO AN INTERSECTION WITH A DIRT/GRAVEL ROAD, PROCEED LEFT IN A SOUTHWESTERLY DIRECTION ± 1.1 MILES TO THE RG 24-29-298 DRILL PAD LOCATION, AS SHOWN HEREON.

REVISED: 7/11/13

Construction Plan Prepared for:
WPX ENERGY WPX Energy Rocky Mountain, LLC

136 East Third Street
Rifle, Colorado 81650
Ph. (970) 625-2720
Fax (970) 625-2773



BOOKCLIFF
Survey Services, Inc.

SCALE: 1" = 2000'
DATE: 6/24/13
PLAT: 5 of 7
PROJECT: Highlands
DFT: cws

RG 24-29-298 Drill Pad - Plat 5
ACCESS ROAD & TOPO MAP