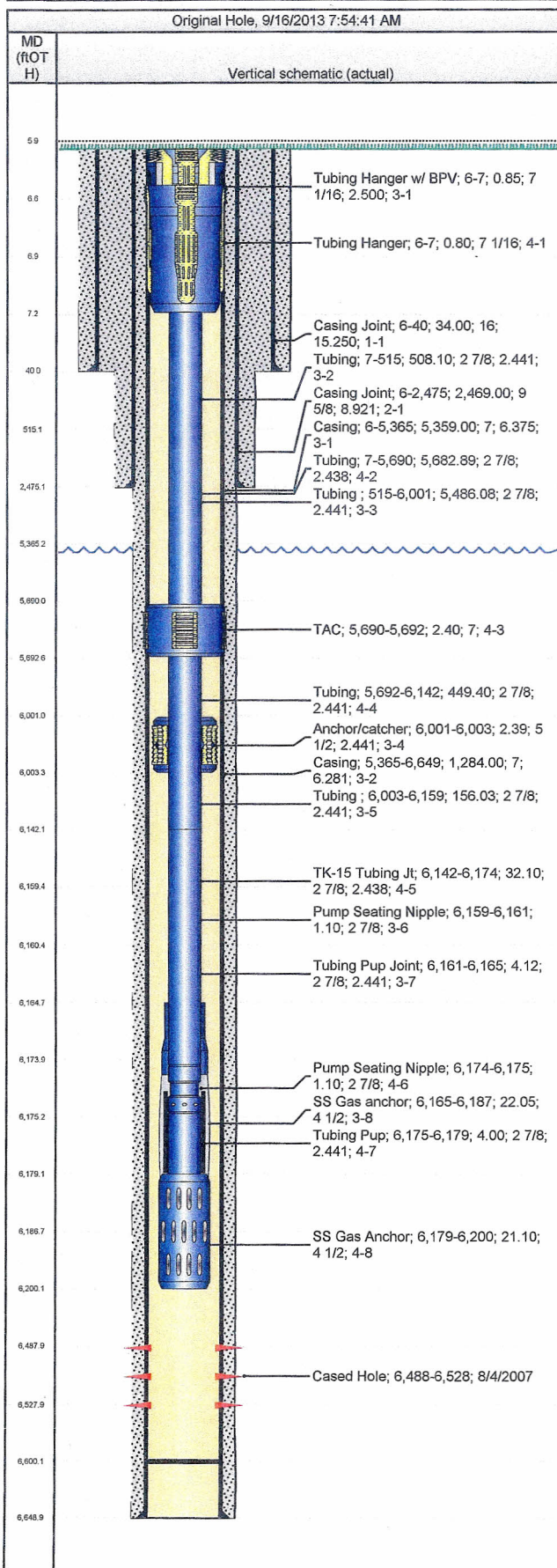




# Wellbore Schematic

Well Name Rigby A 7Y	Lease Rigby 'A'	Field Name Rangely	Business Unit Mid-Continent
-------------------------	--------------------	-----------------------	--------------------------------



Job Details						
Job Category			Start Date		Release Date	
Major Rig Work Over (MRWO)			8/19/2013		9/13/2013	
Casing Strings						
Csg Des	OD (in)	Wt/Len (lb/ft)	Grade	Top Thread	Set Depth (MD) (ftOTH)	
Conductor	16	65.00	H-40		40	
Surface	9 5/8	36.00	K-55		2,475	
Production Casing	7	23.00	K-55		6,649	
Tubing Strings						
Tubing - Production set at 6,186.7ftOTH on 12/2/2010 16:30						
Tubing Description		Run Date	String Length (ft)		Set Depth (MD) (ftO	
Tubing - Production		12/2/2010	6,180.72		6,186.7	
Item Des	Jts	OD (in)	Wt (lb/ft)	Grade	Len (ft)	Btm (ftOTH)
Tubing Hanger w/ BPV		7 1/16			0.85	6.9
Tubing	16	2 7/8	6.50	J-55	508.10	515.0
Tubing	174	2 7/8	6.50	J-55	5,486.08	6,001.0
Anchor/catcher		5 1/2			2.39	6,003.4
Tubing	5	2 7/8	6.50	J-55	156.03	6,159.5
Pump Seating Nipple		2 7/8			1.10	6,160.6
Tubing Pup Joint		2 7/8	6.50	J-55	4.12	6,164.7
SS Gas anchor		4 1/2			22.05	6,186.7
Tubing - Production set at 6,200.2ftOTH on 9/13/2013 12:30						
Tubing Description		Run Date	String Length (ft)		Set Depth (MD) (ftO	
Tubing - Production		9/13/2013	6,193.79		6,200.2	
Item Des	Jts	OD (in)	Wt (lb/ft)	Grade	Len (ft)	Btm (ftOTH)
Tubing Hanger	1	7 1/16			0.80	7.2
Tubing	177	2 7/8	6.50	J-55	5,682.89	5,690.1
TAC	1	7			2.40	5,692.5
Tubing	14	2 7/8	6.50	J-55	449.40	6,141.9
TK-15 Tubing Jt	1	2 7/8	6.50	J-55	32.10	6,174.0
Pump Seating Nipple	1	2 7/8			1.10	6,175.1
Tubing Pup	1	2 7/8	6.50	J-55	4.00	6,179.1
SS Gas Anchor	1	4 1/2			21.10	6,200.2
Perforations						
Date	Top (ftOTH)	Btm (ftOTH)	Shot Dens (shots/ft)	Entered Shot Total	Zone & Completion	
8/4/2007	6,488.0	6,528.0				
Other Strings						
Run Date	Pull Date	Set Depth (ftOTH)	Com			