
CHEVRON - MID-CONTINENT EBIZ

**Rigby A-7Y
RANGELY
Rio Blanco County , Colorado**

Squeeze Perfs
27-Aug-2013

Job Site Documents

The Road to Excellence Starts with Safety

Sold To #: 338668		Ship To #: 2777506		Quote #:		Sales Order #: 900697170	
Customer: CHEVRON - MID-CONTINENT EBIZ				Customer Rep:			
Well Name: Rigby			Well #: A-7Y			API/UWI #: 05-103-09151	
Field: RANGELY		City (SAP): RANGELY		County/Parish: Rio Blanco			State: Colorado
Legal Description: Section 24 Township 2N Range 103W							
Lat: N 40.122 deg. OR N 40 deg. 7 min. 18.372 secs.				Long: W 108.907 deg. OR W -109 deg. 5 min. 33.828 secs.			
Contractor: WORK OVER			Rig/Platform Name/Num: workover				
Job Purpose: Squeeze Perfs							
Well Type: Producing Well			Job Type: Squeeze Perfs				
Sales Person: METLI, MARSHALL			Srcv Supervisor: PORTER, MICHAEL			MBU ID Emp #: 491145	

Job Personnel

HES Emp Name	Exp Hrs	Emp #	HES Emp Name	Exp Hrs	Emp #	HES Emp Name	Exp Hrs	Emp #
CARPENTER, LANCE S	15.0	461737	PORTER, MICHAEL James	15.0	491145	STINCHFIELD, ZACHARIAH Scott	15.0	524221
WILKISON, KEVIN Diverne	15.0	491065						

Equipment

HES Unit #	Distance-1 way	HES Unit #	Distance-1 way	HES Unit #	Distance-1 way	HES Unit #	Distance-1 way
10261036	50 mile	10872113	50 mile	10982756	50 mile	11338215	50 mile
11526496	50 mile						

Job Hours

Date	On Location Hours	Operating Hours	Date	On Location Hours	Operating Hours	Date	On Location Hours	Operating Hours
8-27-13	9	2	8-28-13	6	5			

TOTAL Total is the sum of each column separately

Job

Job Times

Formation Name	Top	Bottom	Called Out	Date	Time	Time Zone
Formation Depth (MD)			On Location	27 - Aug - 2013	04:30	MST
Form Type	BHST		Job Started	27 - Aug - 2013	08:00	MST
Job depth MD	5785. ft	Job Depth TVD	Job Completed	27 - Aug - 2013	00:00	MST
Water Depth		Wk Ht Above Floor	Departed Loc	27 - Aug - 2013	02:00	MST
Perforation Depth (MD)	From 5,815.00 ft	To 5,856.00 ft			00:00	MST

Well Data

Description	New / Used	Max pressure psig	Size in	ID in	Weight lbm/ft	Thread	Grade	Top MD ft	Bottom MD ft	Top TVD ft	Bottom TVD ft
Perforation Interval								5815.	5856.	.	.
Production Casing	Unknown		5.5	4.95	15.5		J-55	.	6050.		
Tubing	Unknown		2.875	2.441	6.4		J-55	.	5785.		

Sales/Rental/3rd Party (HES)

Description	Qty	Qty uom	Depth	Supplier
SUGAR - GRANULATED	40	LB		

Tools and Accessories

Type	Size	Qty	Make	Depth	Type	Size	Qty	Make	Depth	Type	Size	Qty	Make
Guide Shoe					Packer					Top Plug			
Float Shoe					Bridge Plug	7	1		6070	Bottom Plug			
Float Collar					Retainer	7	1	HES	5700	SSR plug set			
Insert Float										Plug Container			
Stage Tool										Centralizers			

Miscellaneous Materials

Gelling Agt	Conc	Surfactant	Conc	Acid Type	Qty	Conc	%
-------------	------	------------	------	-----------	-----	------	---

Treatment Fld	Conc	Inhibitor	Conc	Sand Type	Size	Qty			
Fluid Data									
Stage/Plug #: 1									
Fluid #	Stage Type	Fluid Name	Qty	Qty uom	Mixing Density lbm/gal	Yield ft ³ /sk	Mix Fluid Gal/sk	Rate bbl/min	Total Mix Fluid Gal/sk
1	Injection Rate Water		30.00	bbl	8.34	.0	.0	2.0	
2	SqueezeCem V1	SQUEEZECEM (TM) SYSTEM (452971)	200.0	sacks	15.8	1.15	4.98	2.0	4.98
	0.2 %	HR-5, 50 LB SK (100005050)							
	4.98 Gal	FRESH WATER							
3	Water Displacement		15.00	bbl	8.34	.0	.0	2.0	
Calculated Values		Pressures		Volumes					
Displacement	33	Shut In: Instant	260	Lost Returns		Cement Slurry	40	Pad	
Top Of Cement		5 Min		Cement Returns	17	Actual Displacement	15	Treatment	
Frac Gradient		15 Min		Spacers		Load and Breakdown		Total Job	
Rates									
Circulating		Mixing	2	Displacement	1.5	Avg. Job	1.5		
Cement Left In Pipe	Amount	0 ft	Reason	Shoe Joint					
Frac Ring # 1 @	ID	Frac ring # 2 @	ID	Frac Ring # 3 @	ID	Frac Ring # 4 @	ID		
The Information Stated Herein Is Correct				Customer Representative Signature					

The Road to Excellence Starts with Safety

Sold To #: 338668	Ship To #: 2777506	Quote #:	Sales Order #: 900697170
Customer: CHEVRON - MID-CONTINENT EBIZ		Customer Rep:	
Well Name: Rigby	Well #: A-7Y	API/UWI #: 05-103-09151	
Field: RANGELY	City (SAP): RANGELY	County/Parish: Rio Blanco	State: Colorado
Legal Description: Section 24 Township 2N Range 103W			
Lat: N 40.122 deg. OR N 40 deg. 7 min. 18.372 secs.		Long: W 108.907 deg. OR W -109 deg. 5 min. 33.828 secs.	
Contractor: WORK OVER		Rig/Platform Name/Num: workover	
Job Purpose: Squeeze Perfs			Ticket Amount:
Well Type: Producing Well		Job Type: Squeeze Perfs	
Sales Person: METLI, MARSHALL		Srv Supervisor: PORTER, MICHAEL	MBU ID Emp #: 491145

Activity Description	Date/Time	Cht #	Rate bbl/min	Volume bbl		Pressure psig		Comments
				Stage	Total	Tubing	Casing	
Call Out	08/27/2013 04:30							CALL OUT HES CREW. REQUESTED ON LOCATION AT 09:00
Pre-Convoy Safety Meeting	08/27/2013 06:15							PRE CONVOY SAFETY MEETING TO DISCUSS DIRECTIONS AND HAZARDS OF DRIVING
Depart from Service Center or Other Site	08/27/2013 06:30							CREW DEPARTS FOR LOCATION
Arrive At Loc	08/27/2013 07:45							CEMENT CREW ARRIVES AT LOCATION
Other	08/27/2013 08:00							WIRELINE SETTING BRIDGE PLUG, STILL NEED TO PUT SAND ON PLUG AND SET RETAINER
Assessment Of Location Safety Meeting	08/27/2013 15:30							SITE ASSESSMENT SAFETY HUDDLE TO DISCUSS HAZARDS ON LOCATION AND WHERE TO SPOT EQUIPMENT
Pre-Rig Up Safety Meeting	08/27/2013 16:00							PRE RIG UP SAFETY MEETING TO DISCUSS HAZARDS OF RIGGING UP EQUIPMENT
Rig-Up Equipment	08/27/2013 16:30							RIG UP EQUIPMENT
Rig-Up Completed	08/27/2013 17:30							FINISHED RIGGING UP EQUIPMENT
Other	08/27/2013 17:45							RELEASED BY COMPANY MAND, REQUESTED BACK ON LOCATION 8-28-13 BY 06:30

Activity Description	Date/Time	Cht #	Rate bbl/min	Volume bbl		Pressure psig		Comments
				Stage	Total	Tubing	Casing	
Pump Cement	08/28/2013 08:28		2	40	70		380.0	PUMP CEMENT 200 SACKS, 15.8 #, YIELD 1.15, WATER 4.98
Pump Displacement	08/28/2013 08:56		1.5	15	85		1100.0	PUMP DISPLACEMENT
Shutdown	08/28/2013 09:06						100.0	SHUTDOWN WHEN PRESSURE INCREASED TO 1100 PSI, PRESSURE FELL TO 100 PSI
Pump Displacement	08/28/2013 09:07		0.5	0.1	85		1077.0	PUMP DISPLACEMENT
Shutdown	08/28/2013 09:09						90.0	SHUTDOWN WHEN PRESSURE INCREASED TO 1077 PSI, PRESSURE FELL TO 90 PSI
Pump Displacement	08/28/2013 09:15		0.5	0.2	85.5		1057.0	PUMP DISPLACEMENT
Shutdown	08/28/2013 09:17						120.0	SHUTDOWN WHEN PRESSURE INCREASED TO 1057 PSI, PRESSURE FELL TO 120 PSI
Pump Displacement	08/28/2013 09:26		0.5	0.2	85.5		1072.0	PUMP DISPLACEMENT
Shutdown	08/28/2013 09:28						275.0	SHUTDOWN WHEN PRESSURE INCREASED TO 1072 PSI, PRESSURE FELL TO 275 PSI
Pump Displacement	08/28/2013 09:35		0.5	0.2	85.7		1080.0	PUMP DISPLACEMENT
Shutdown	08/28/2013 09:37						150.0	SHUTDOWN WHEN PRESSURE INCREASED TO 1080 PSI
Pump Displacement	08/28/2013 09:45		0.5	0.1	85.8		1125.0	PUMP DISPLACEMENT
Shutdown	08/28/2013 09:47						500.0	SHUTDOWN WHEN PRESSURE INCREASED TO 1125 PSI
Other	08/28/2013 09:50							STING OUT OF RETAINER TO REV CIRCULATE WELL
Activity Description	Date/Time	Cht #	Rate bbl/min	Volume bbl		Pressure psig		Comments
				Stage	Total	Tubing	Casing	

Sold To # : 338668

Ship To # : 2777506

Quote # :

Sales Order # : 900697170

SUMMIT Version: 7.3.0106

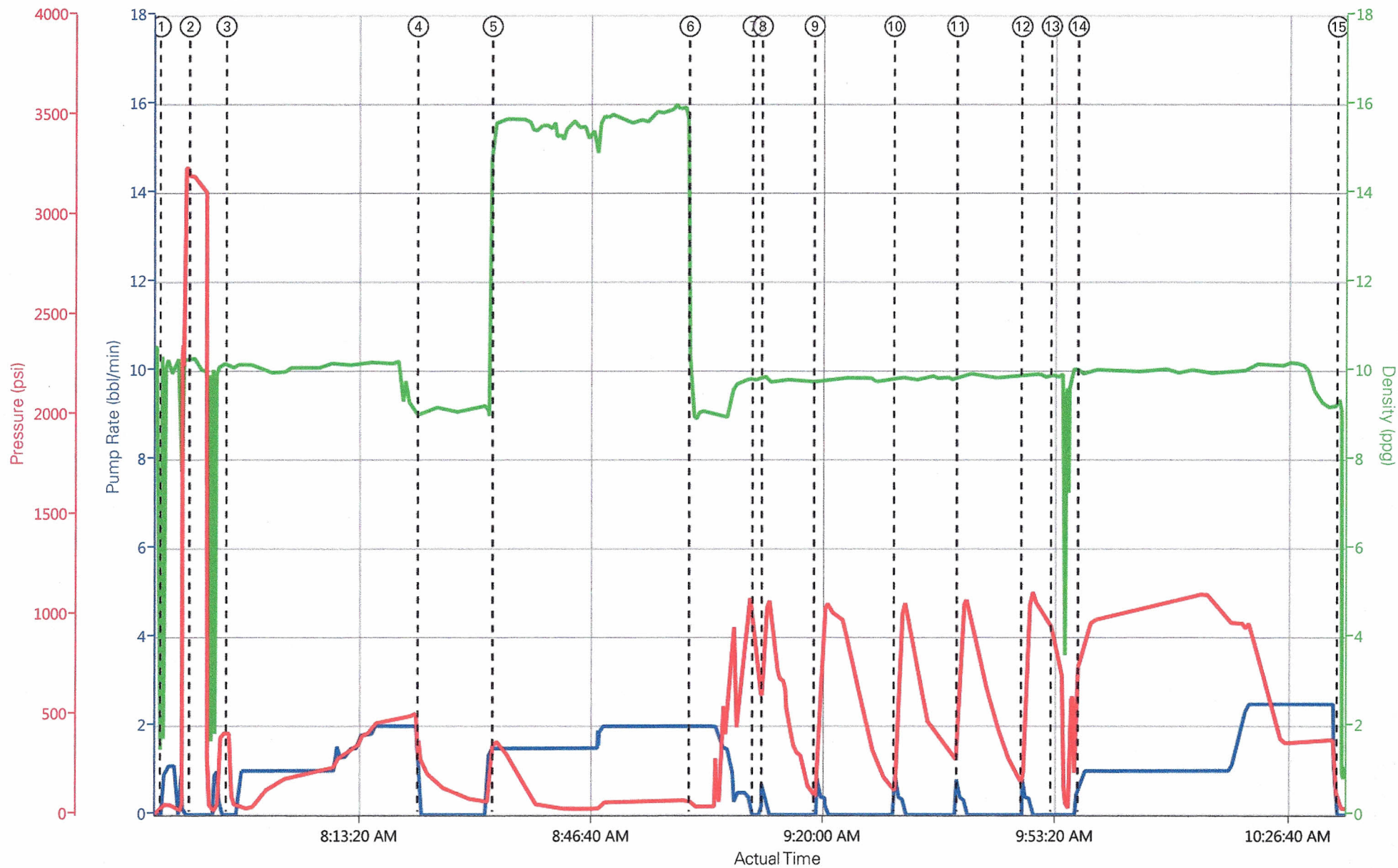
Wednesday, August 28, 2013 12:32:00

Activity Description	Date/Time	Cht #	Rate bbl/min	Volume bbl		Pressure psig		Comments
				Stage	Total	Tubing	Casing	
Pre-Convoy Safety Meeting	08/27/2013 17:50							PRE CONVOY SAFETY MEETING TO DISCUSS HAZARDS OF DRIVING
Depart Location for Service Center or Other Site	08/27/2013 18:00							DEPART LOCATION
Pre-Convoy Safety Meeting	08/28/2013 05:00							PRE CONVOY SAFETY MEETING TO DISCUSS HAZARDS OF DRIVING
Depart from Service Center or Other Site	08/28/2013 05:10							DEPART FOR LOCATION
Arrive At Loc	08/28/2013 06:10							ARRIVE AT LOCATION
Assessment Of Location Safety Meeting	08/28/2013 06:15							SITE ASSESSMENT SAFETY HUDDLE TO DISCUSS HAZARDS ON LOCATION AND PLAN FOR FINISHING RIG UP
Pre-Job Safety Meeting	08/28/2013 06:45							PRE JOB SAFETY MEETING WITH ALL ON LOCATION TO DISCUSS THE JOB PROCEDURE, PRESSURE TESTING PROCEDURE, AND HAZARDS DURING THE JOB, ALSO DISCUSSED HAZARDS OF RIGGING UP THE REST OF THE EQUIPMENT
Rig-Up Equipment	08/28/2013 07:15							RIG UP THE REST OF THE EQUIPMENT TO FLOOR AND BACKSIDE
Rig-Up Completed	08/28/2013 07:30							FINISHED RIGGING UP EQUIPMENT
Other	08/28/2013 07:45							FILL LINES TO PRESSURE TEST
Pressure Test	08/28/2013 07:47							PRESSURE TEST HES IRON TO 3000 PSI
Injection Test	08/28/2013 08:00		2	30	30		600.0	ESTABLISH INJECTION RATE
Shutdown	08/28/2013 08:17							SHUTDOWN TO MIX UP CEMENT
Other	08/28/2013 08:18							MIX RETARDER INTO MIX WATER, BRING UP A TUB OF CEMENT

Cementing Job Log

Reverse Circ Well	08/28/2013 09:52		1.5	50	136		1100. 0	REVERSE CIRCULATE WELL WITH BRINE, GOT 17 BBLS OF CEMENT BACK
Shutdown	08/28/2013 10:30							SHUTDOWN
Pre-Rig Down Safety Meeting	08/28/2013 10:45							PRE RIG DOWN SAFETY MEETING TO DISCUSS HAZARDS OF RIGGING DOWN EQUIPMENT
Rig-Down Equipment	08/28/2013 11:00							CREW RIGS UP TO THE BACKSIDE AND THE TUBING
Rig-Down Completed	08/28/2013 12:00							CREW FINISHES RIGGING DOWN EQUIPMENT
Pre-Convoy Safety Meeting	08/28/2013 12:15							PRE CONVOY SAFETY MEETING TO DISCUSS HAZARDS OF DRIVING
Depart Location for Service Center or Other Site	08/28/2013 12:30							CREW DEPARTS LOCATION

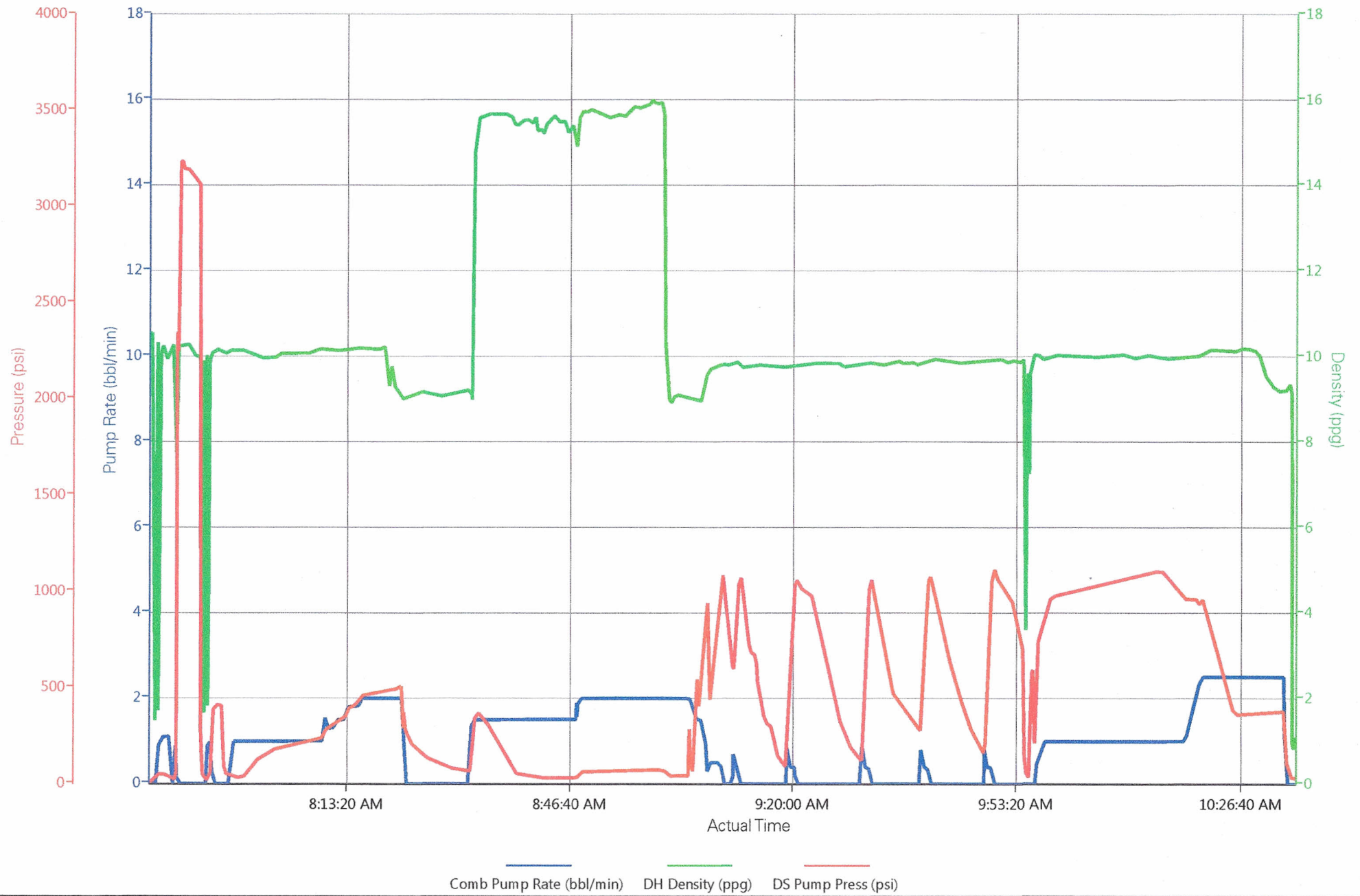
Chevron Squeeze



Comb Pump Rate (bbl/min) DH Density (ppg) DS Pump Press (psi)

- | | | | | |
|--------------------------------|-------------------------------|----------------------------------|----------------------------------|----------------------------------|
| ① Pump Spacer 1 0.9;2.36;47 | ④ Shutdown 0;9.04;262 | ⑦ Shutdown 0;9.83;820 | ⑩ Pump Displacement 0.4;9.81;349 | ⑬ Sting out 0;9.9;888 |
| ② Test Lines 0;10.27;3209 | ⑤ Pump Cement 1.5;15.59;369 | ⑧ Pump Displacement 0.4;9.87;907 | ⑪ Pump Displacement 0.4;9.93;691 | ⑭ Reverse Circ Well 0.7;9.89;804 |
| ③ Pressure Up Well 0;10.15;331 | ⑥ Pump Displacement 2;9.18;51 | ⑨ Pump Displacement 0.4;9.76;138 | ⑫ Pump Displacement 0.4;9.93;426 | ⑮ Shutdown 0;9.23;34 |

Chevron Squeeze



Chevron Squeeze

