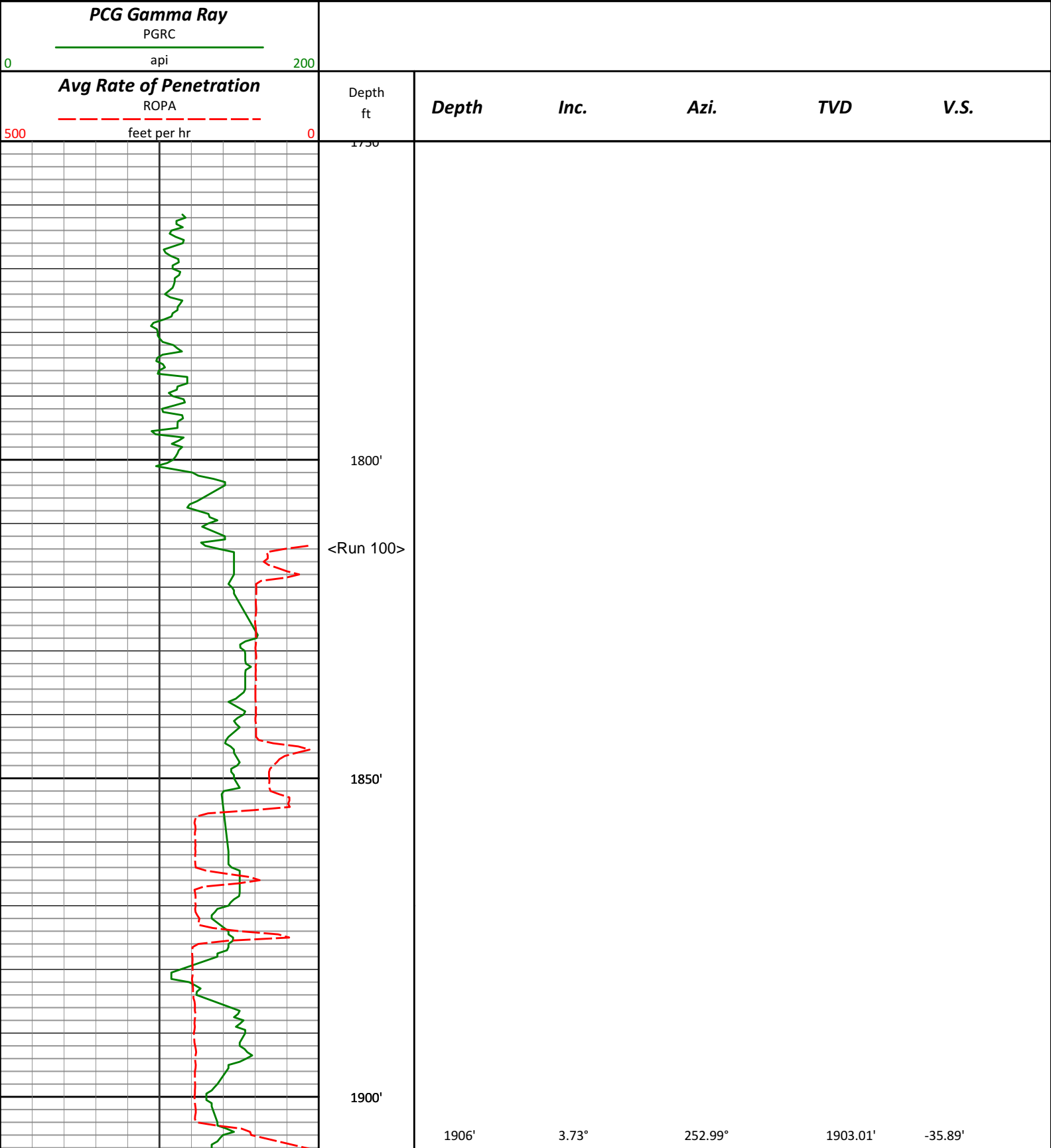


HALLIBURTON
Sperry Drilling Services
MD Detail Log 1:240

Conoco/Phillips
State of Colorado 36-1
H&P 280
3S - 64W





2150'

PGXC

ROPA

2200'

2250'

2300'

2191'

2.04°

249.07°

2187.57'

-42.09'

2286'

0.93°

255.54°

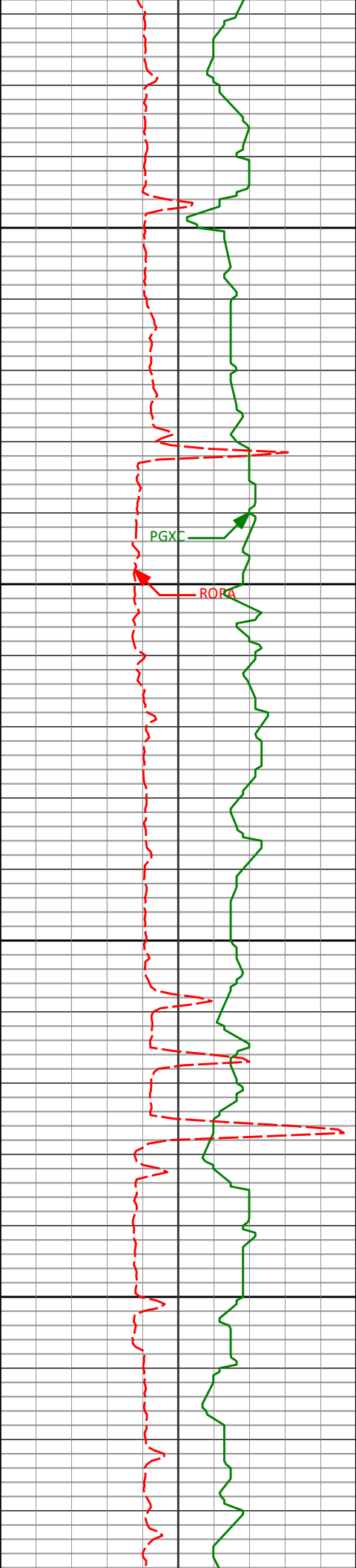
2282.54'

-42.89'



2381'	0.56°	263.08°	2377.53'	-43.14'
-------	-------	---------	----------	---------

2476'	0.91°	38.26°	2472.52'	-42.60'
-------	-------	--------	----------	---------



2570'	0.41°	43.76°	2566.52'	-41.78'
-------	-------	--------	----------	---------

2600'

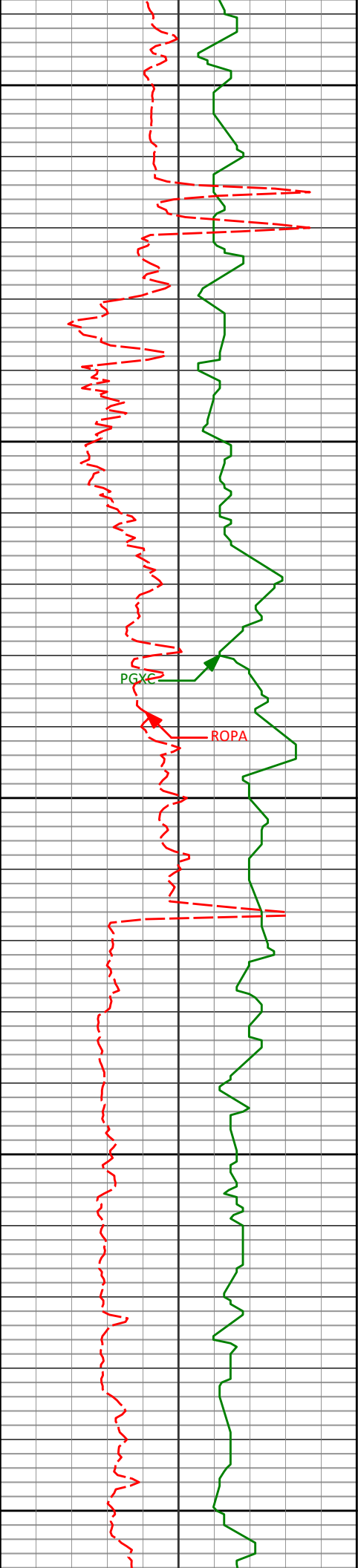
2650'

2665'	0.82°	20.54°	2661.51'	-40.90'
-------	-------	--------	----------	---------

2700'

2750'

2759'	0.83°	27.32°	2755.50'	-39.67'
-------	-------	--------	----------	---------



2800'

2850'

2900'

2950'

3000'

2854'

0.33°

353.41°

2850.50'

-38.78'

PGX

ROPA

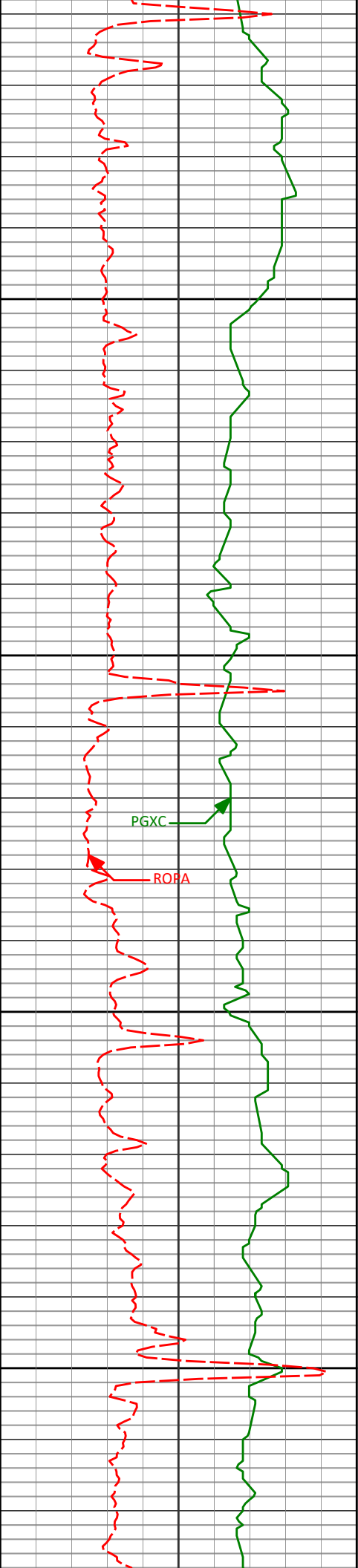
2949'

0.65°

45.29°

2945.49'

-38.13'



3050'

3100'

3150'

3200'

3044'

0.79°

69.19°

3040.49'

-37.52'

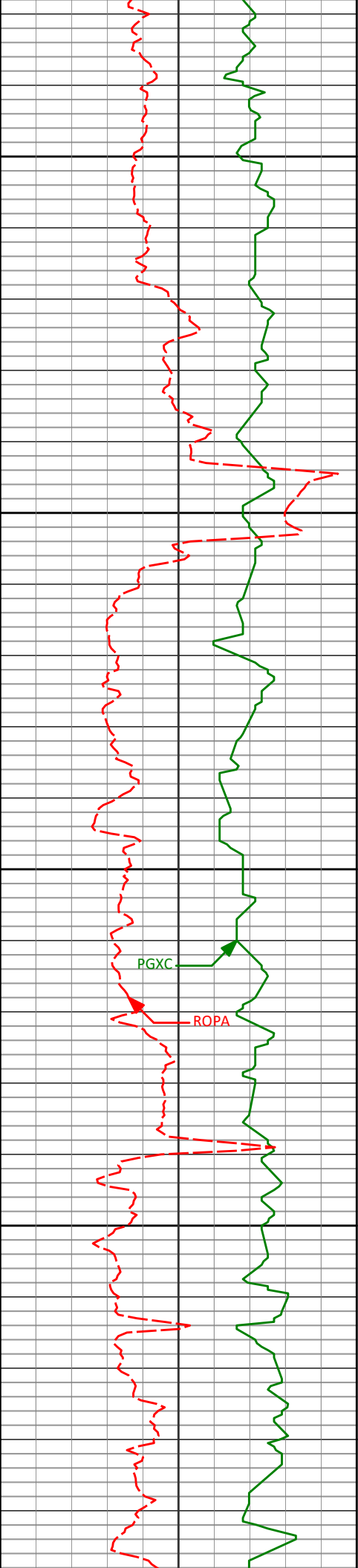
3139'

1.16°

101.95°

3135.47'

-37.49'



3250'

3300'

3350'

3400'

3233'

1.30°

84.48°

3229.45'

-37.58'

3328'

0.39°

93.49°

3324.44'

-37.50'

3423'

0.72°

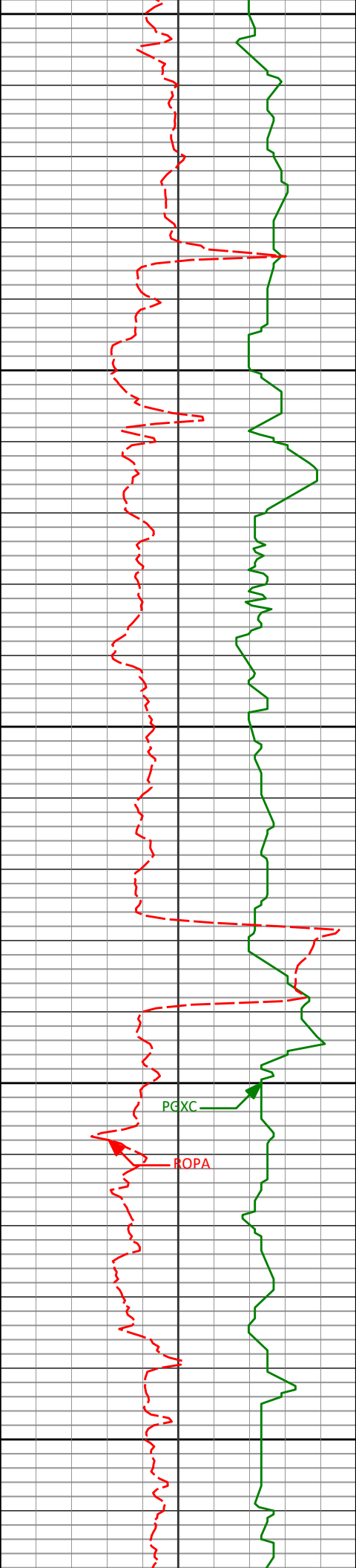
79.96°

3419.44'

-37.41'

PGXC

ROPA



3450'

3500'

3550'

3600'

3650'

3518'

1.43°

108.72°

3514.42'

-37.69'

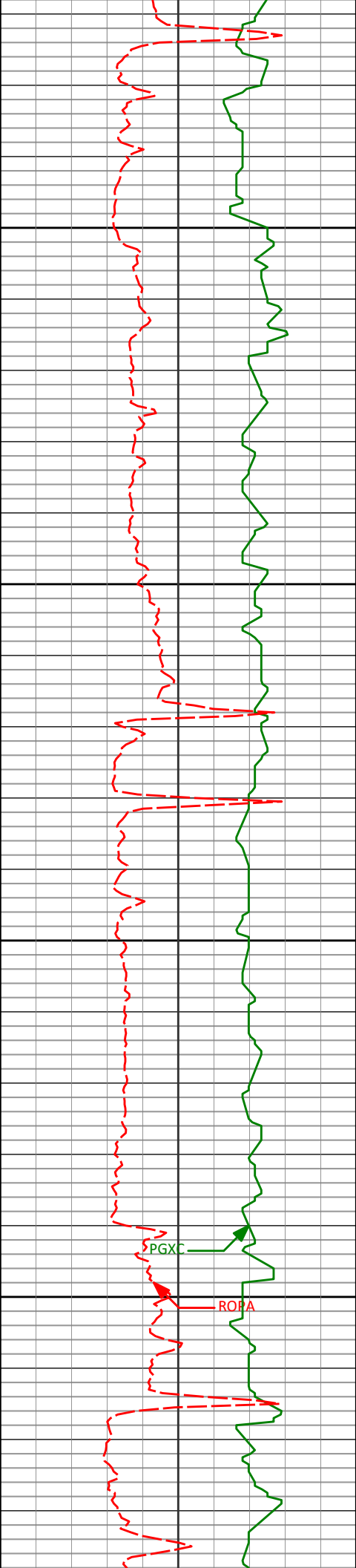
3613'

0.51°

184.35°

3609.41'

-38.48'



3700'

3708'

0.75°

209.64°

3704.40'

-39.44'

3750'

3800'

3803'

0.64°

193.84°

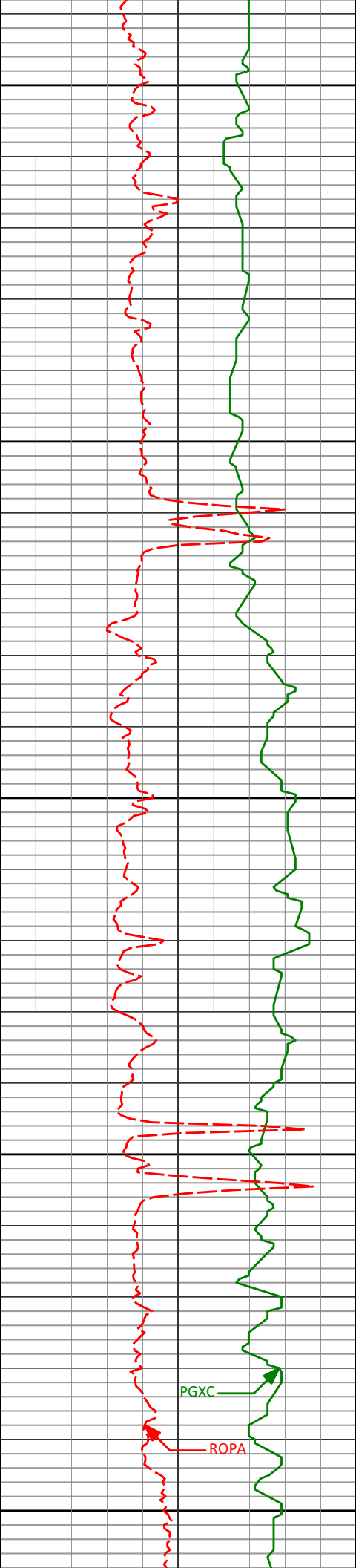
3799.40'

-40.49'

3850'

PGXC

ROPA



3900'

3898'

0.34°

167.82°

3894.39'

-41.28'

3950'

4000'

3993'

0.39°

70.58°

3989.39'

-41.45'

4050'

4100'

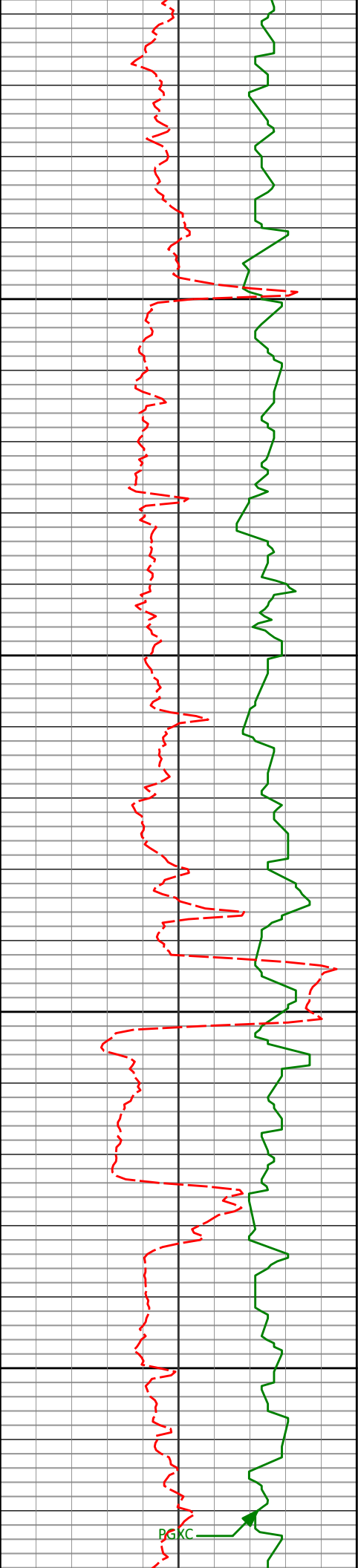
4087'

0.76°

161.29°

4083.39'

-41.94'



4150'

4182'

1.13°

160.26°

4178.37'

-43.42'

4200'

4250'

4277'

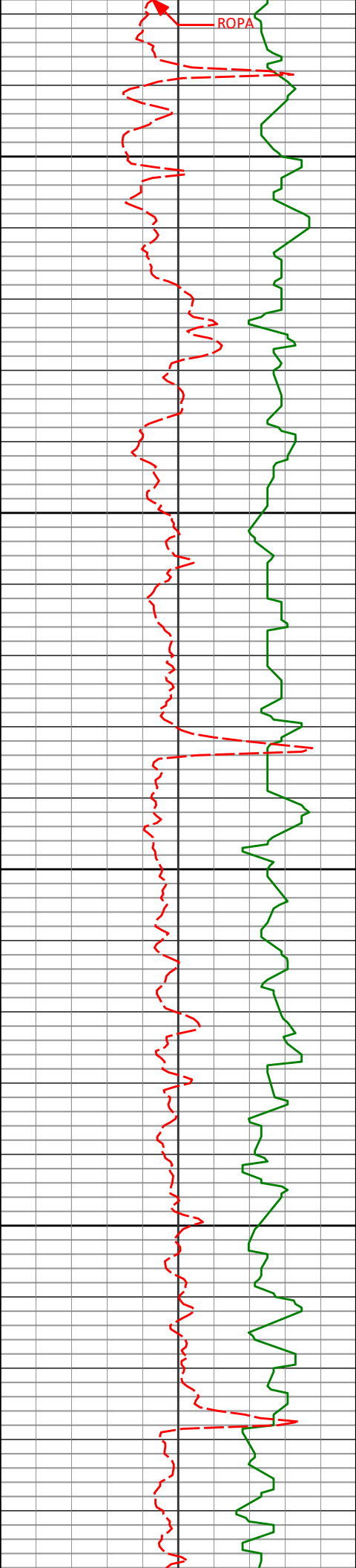
0.19°

223.98°

4273.37'

-44.42'

4300'



4372'

0.82°

115.20°

4368.36'

-44.82'

4467'

0.71°

111.38°

4463.36'

-45.32'



4550'

4562'

0.70°

96.50°

4558.35'

-45.60'

4600'

4650'

4656'

0.44°

85.71°

4652.34'

-45.64'

4700'

4750'

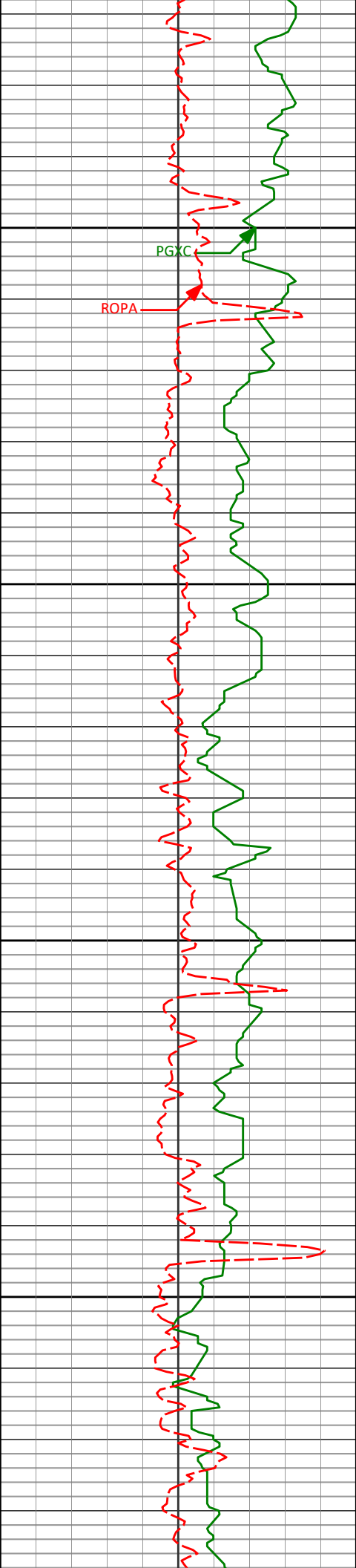
4751'

0.39°

98.79°

4747.34'

-45.66'



4800'

PGXC

ROPA

4850'

4846'

0.31°

110.37°

4842.34'

-45.80'

4900'

4950'

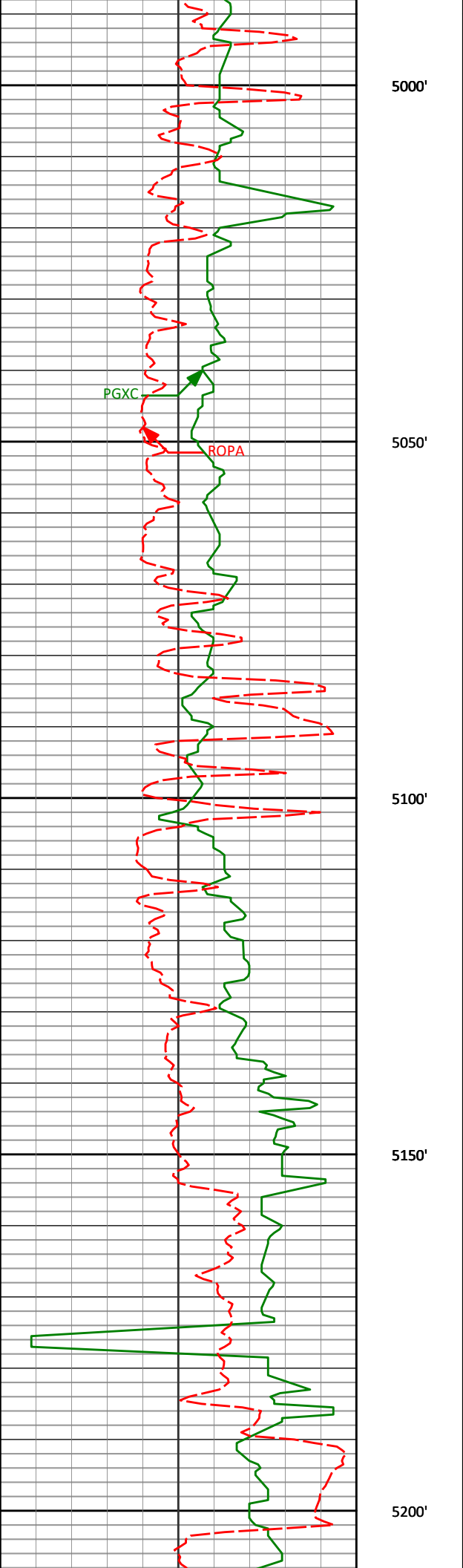
4941'

0.43°

131.42°

4937.34'

-46.13'



5036'

0.49°

144.55°

5032.33'

-46.69'

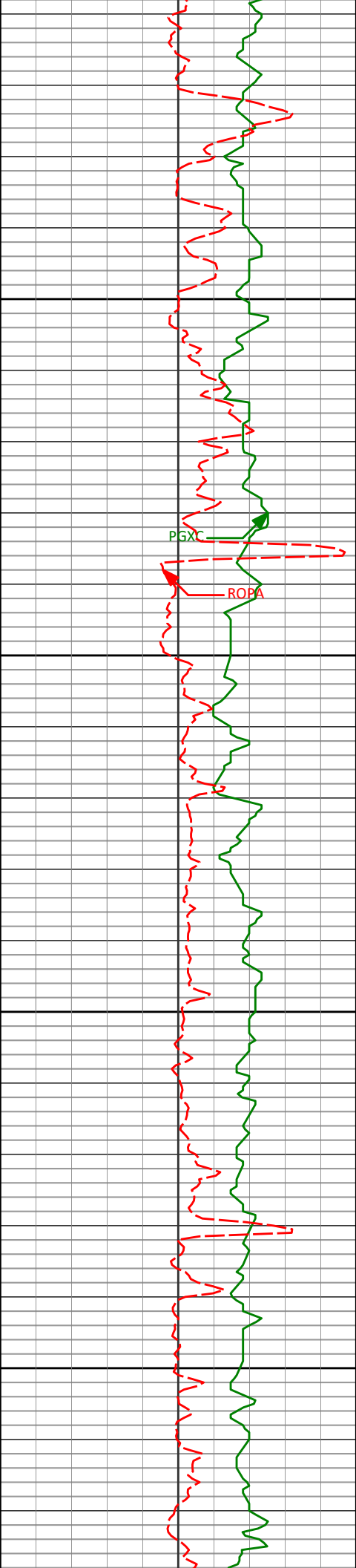
5131'

0.07°

278.99°

5127.33'

-47.01'



5250'

5300'

5350'

5400'

5226'

0.95°

52.04°

5222.33'

-46.52'

5321'

0.66°

47.86°

5317.32'

-45.66'

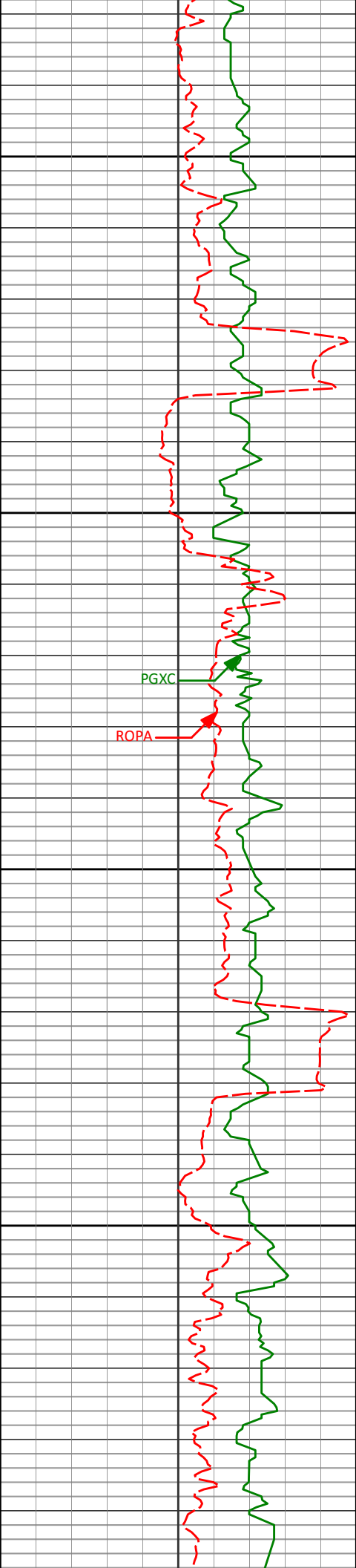
5415'

0.52°

125.60°

5411.32'

-45.55'



5450'

5500'

5550'

5600'

5510'

1.24°

105.13°

5506.30'

-46.07'

PGXC

ROPA

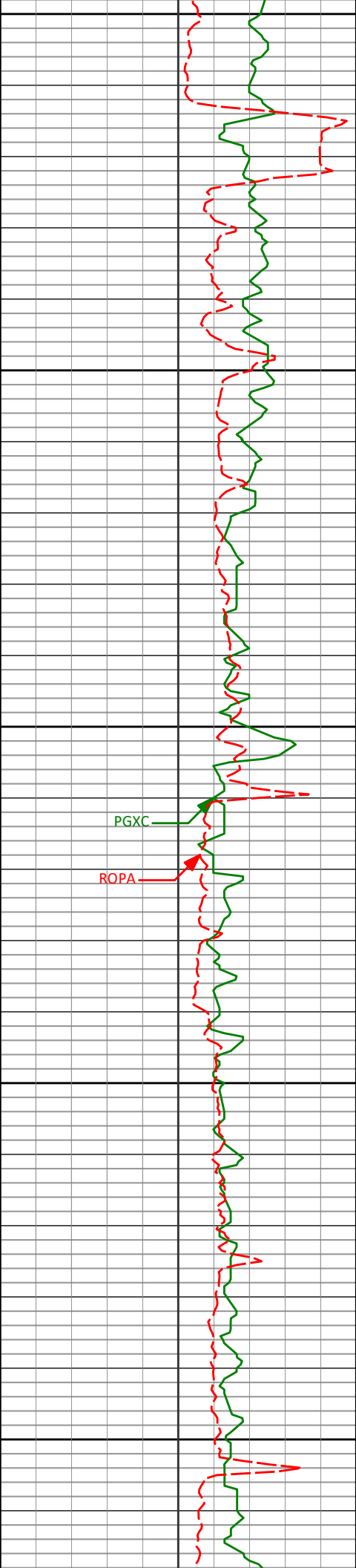
5605'

0.90°

84.54°

5601.29'

-46.27'



5650'

5700'

5750'

5800'

5850'

5700'

0.68°

53.54°

5696.28'

-45.86'

5795'

0.22°

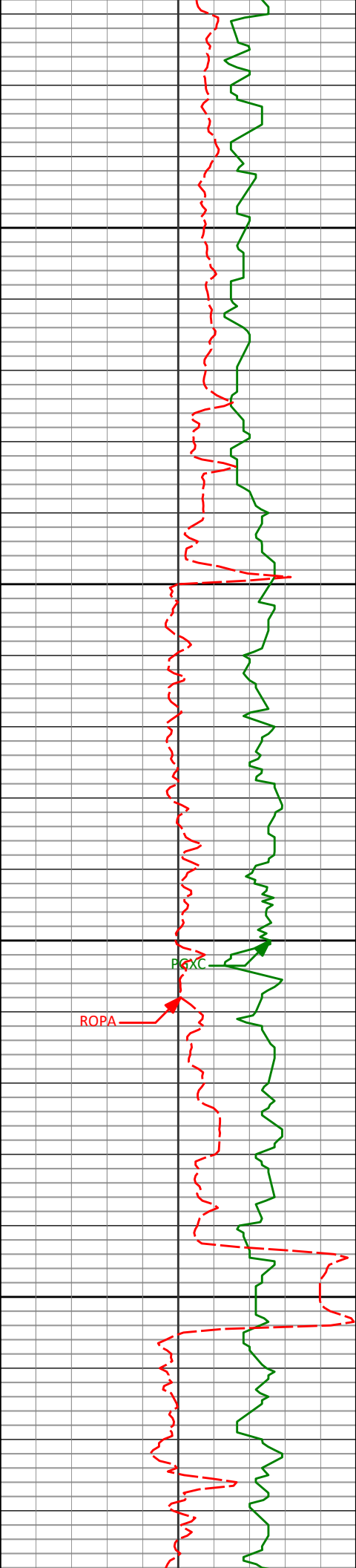
299.87°

5791.28'

-45.44'

PGXC

ROPA



5900'

5950'

6000'

6050'

5890'

0.30°

20.75°

5886.28'

-45.11'

5985'

0.09°

299.27°

5981.28'

-44.84'

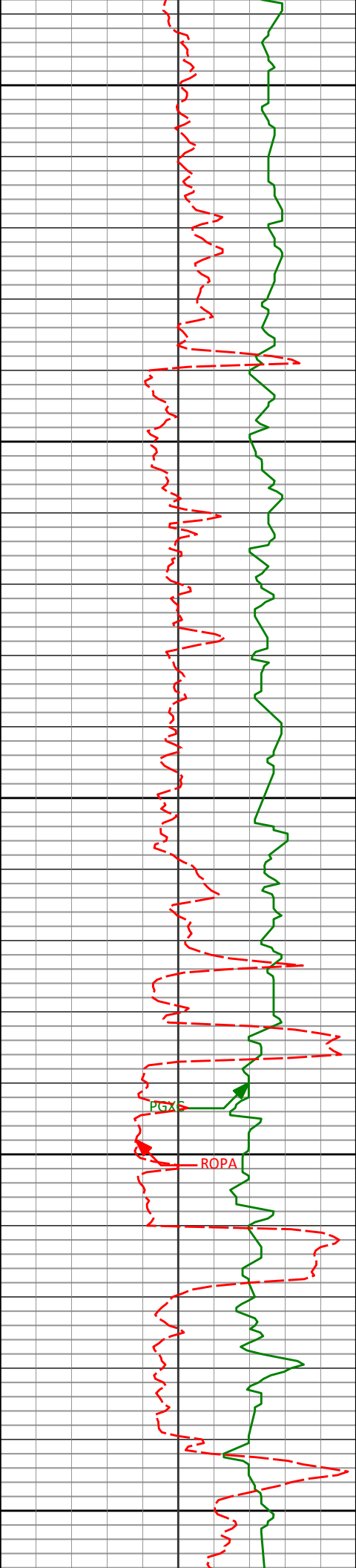
6080'

0.47°

51.05°

6076.27'

-44.56'



6100'

6150'

6200'

6250'

6300'

6175'

0.25°

174.81°

6171.27'

-44.52'

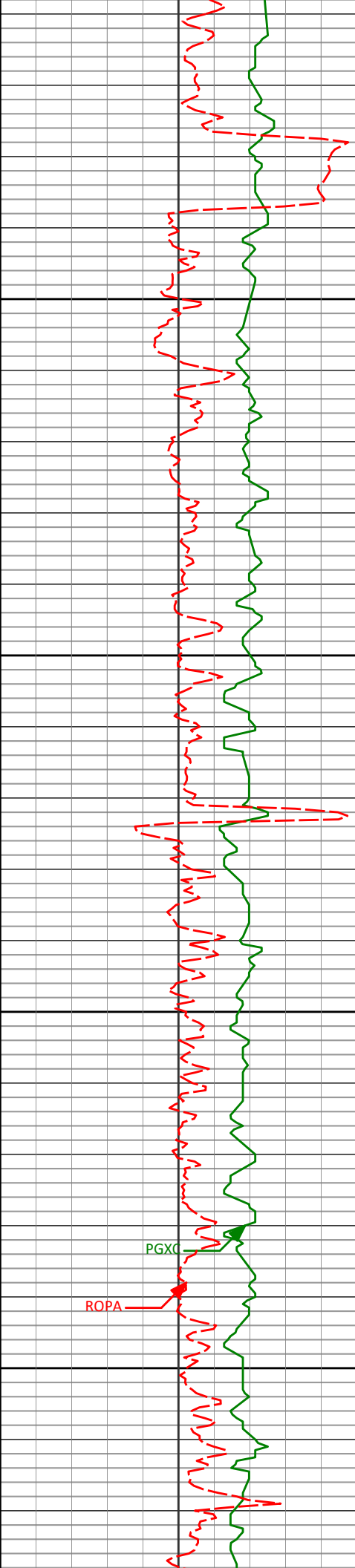
6269'

0.40°

163.56°

6265.27'

-45.05'



6350'

6364'

0.60°

75.93°

6360.27'

-45.25'

6400'

6450'

6459'

0.56°

53.52°

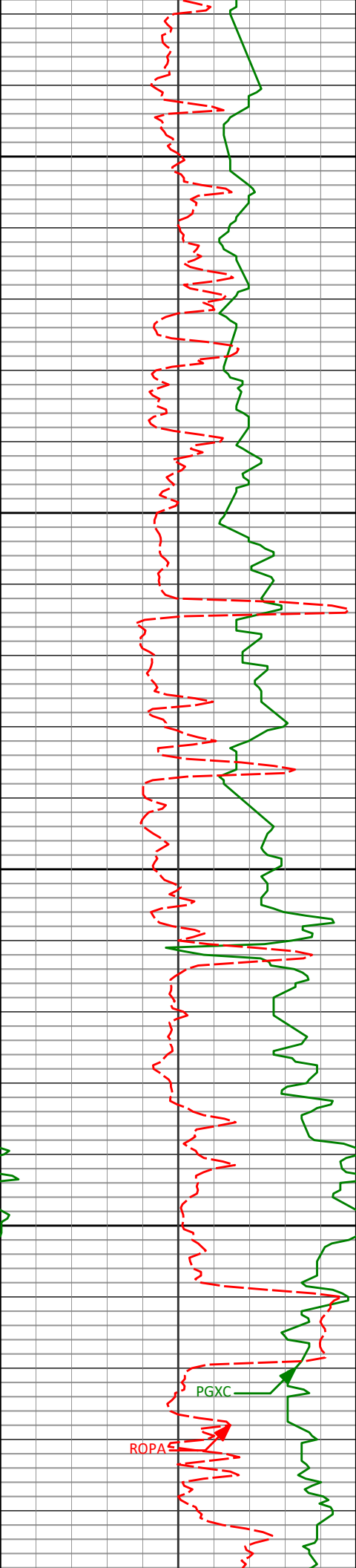
6455.27'

-44.85'

PGXC

ROPA

6500'



6550'

6554'

0.48°

78.65°

6550.26'

-44.49'

6600'

6650'

6649'

0.84°

115.05°

6645.26'

-44.71'

6700'

PGXC

ROPA

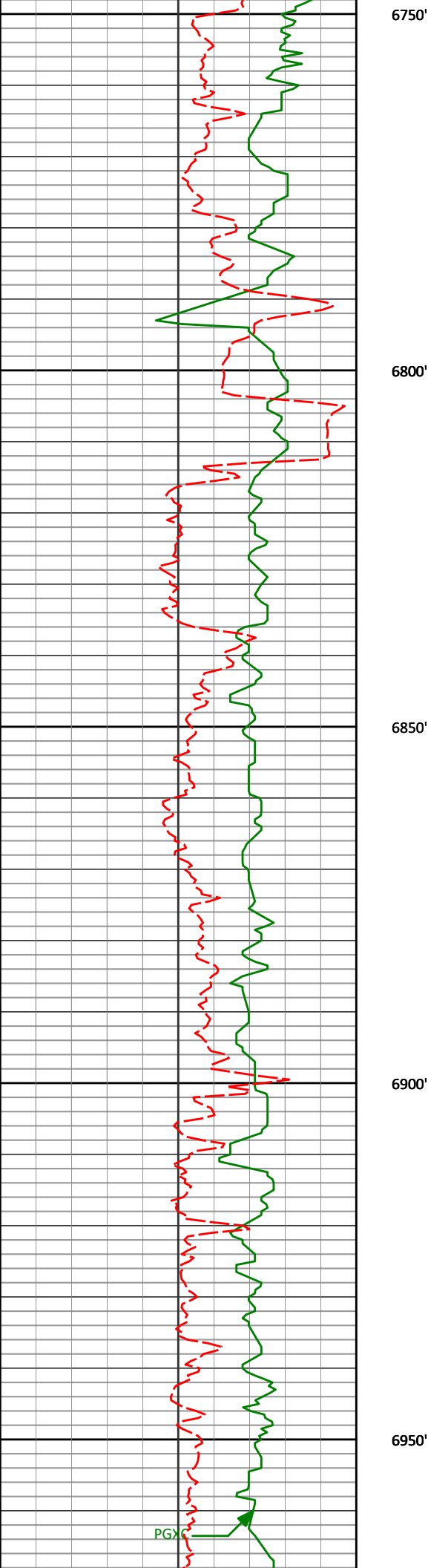
6744'

1.02°

86.73°

6740.24'

-44.96'



6839'

0.78°

53.90°

6835.23'

-44.52'

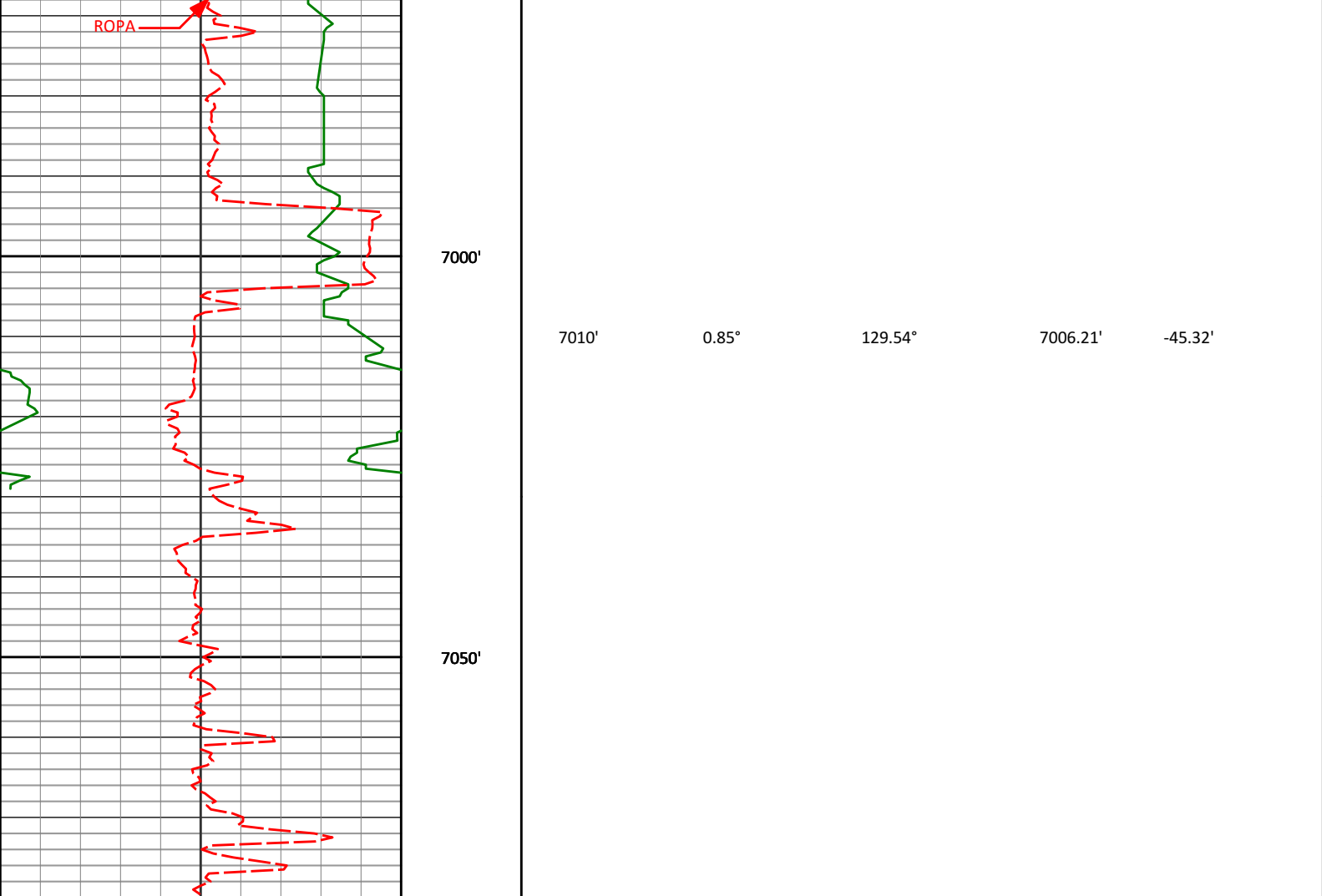
6934'

1.10°

119.68°

6930.22'

-44.59'



Avg Rate of Penetration ROPA feet per hr	Depth ft	Depth	Inc.	Azi.	TVD	V.S.
---	-------------	--------------	-------------	-------------	------------	-------------

PCG Gamma Ray PGRC api	
-------------------------------------	--

HALLIBURTON

Sperry Drilling Services

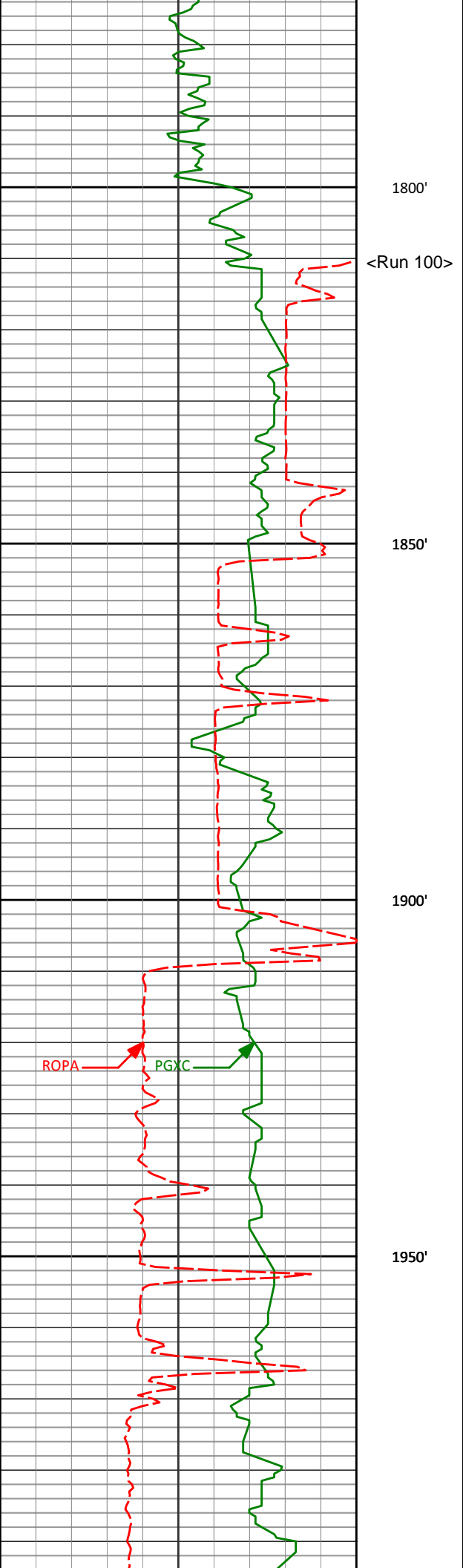
TVD Detail Log 1:240

Conoco/Phillips
State of Colorado 36-1
H&P 280
3S - 64W

PCG Gamma Ray PGRC api	
-------------------------------------	--

Avg Rate of Penetration ROPA feet per hr	TVD ft	Depth	Inc.	Azi.	TVD	V.S.
---	-----------	--------------	-------------	-------------	------------	-------------





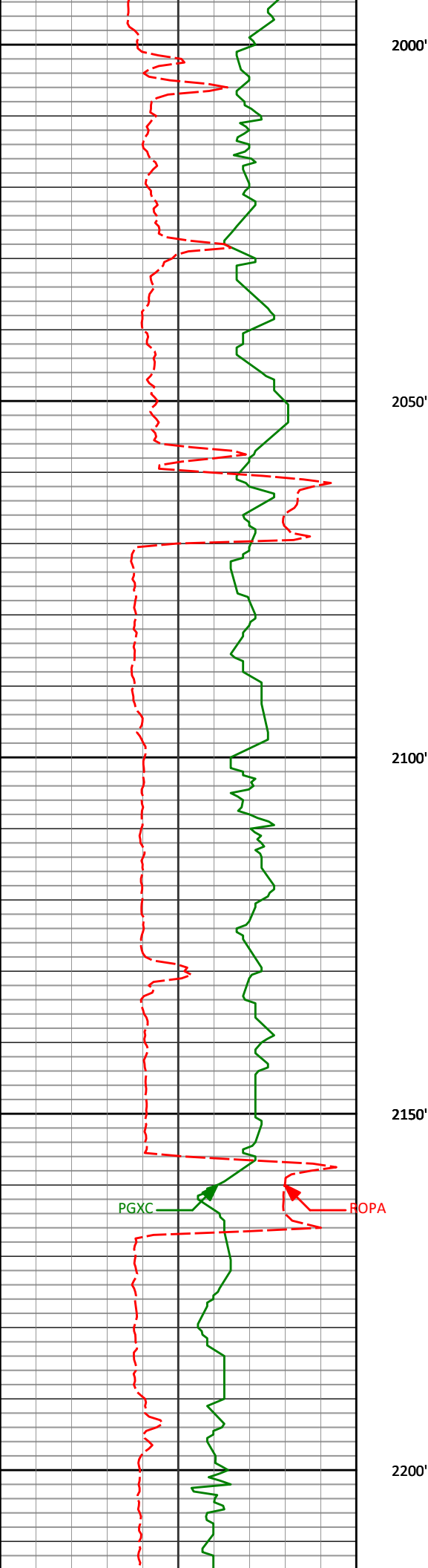
1906'

3.73°

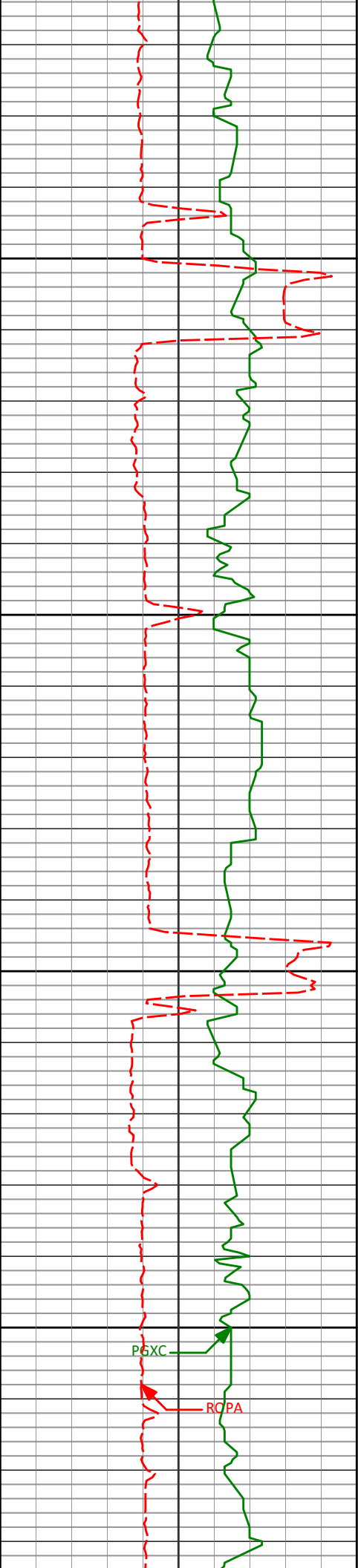
252.99°

1903.01'

-35.89'



2001'	3.75°	244.31°	1997.81'	-38.14'
2096'	2.80°	244.43°	2092.65'	-40.49'
2191'	2.04°	249.07°	2187.57'	-42.09'



2250'

2286'

0.93°

255.54°

2282.54'

-42.89'

2300'

2350'

2381'

0.56°

263.08°

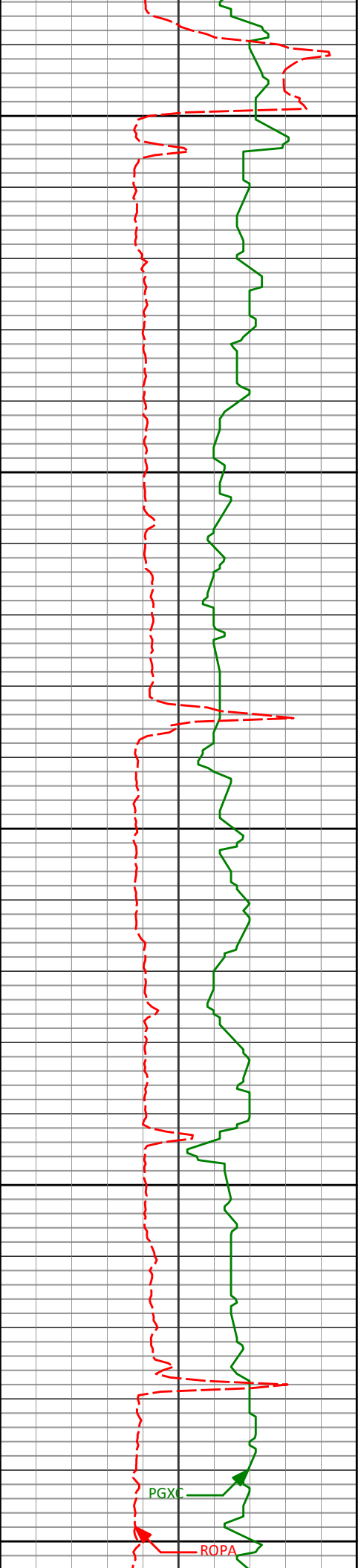
2377.53'

-43.14'

2400'

PGXC

RCPA



2450'

2476'

0.91°

38.26°

2472.52'

-42.60'

2500'

2550'

2570'

0.41°

43.76°

2566.52'

-41.78'

2600'

2650'

PGXC

ROPA



2700'

2750'

2800'

2850'

2665'	0.82°	20.54°	2661.51'	-40.90'
-------	-------	--------	----------	---------

2759'	0.83°	27.32°	2755.50'	-39.67'
-------	-------	--------	----------	---------

2854'	0.33°	353.41°	2850.50'	-38.78'
-------	-------	---------	----------	---------



2900'

2950'

3000'

3050'

2949'

0.65°

45.29°

2945.49'

-38.13'

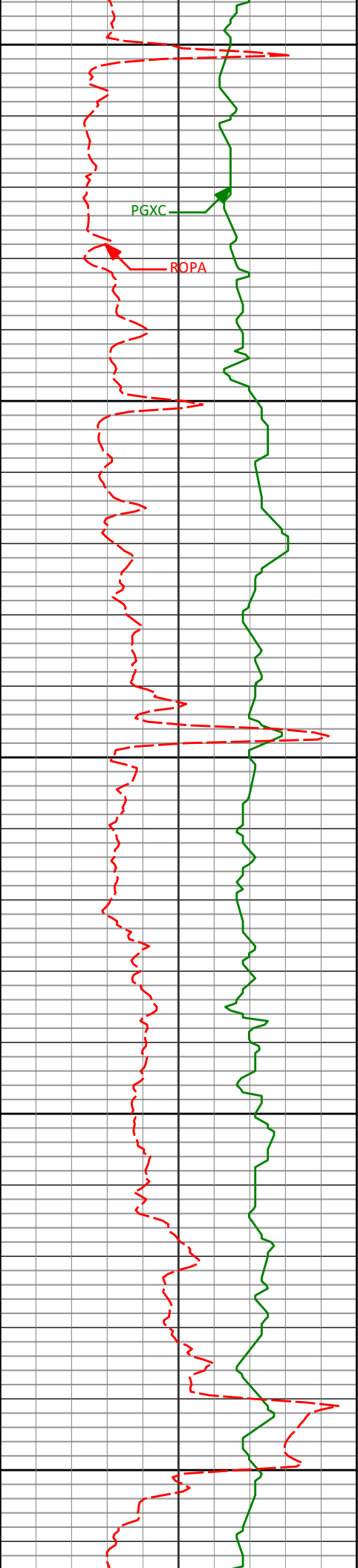
3044'

0.79°

69.19°

3040.49'

-37.52'



3100'

PGXC

ROPA

3139'

1.16°

101.95°

3135.47'

-37.49'

3150'

3200'

3233'

1.30°

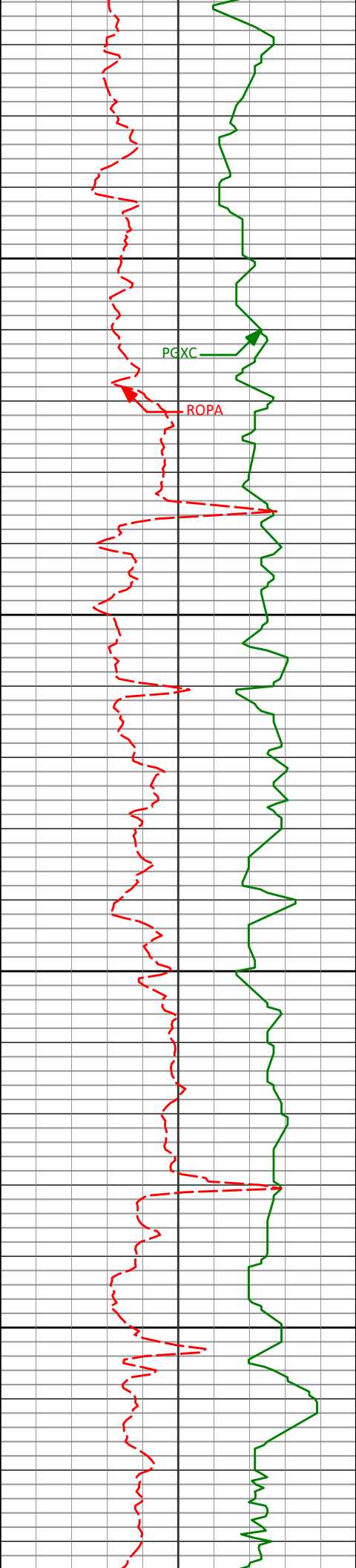
84.48°

3229.45'

-37.58'

3250'

3300'



3328'

0.39°

93.49°

3324.44'

-37.50'

3350'

PGXC

ROPA

3400'

3423'

0.72°

79.96°

3419.44'

-37.41'

3450'

3500'

3518'

1.43°

108.72°

3514.42'

-37.69'



3550'

3600'

3650'

3700'

3750'

3613'

0.51°

184.35°

3609.41'

-38.48'

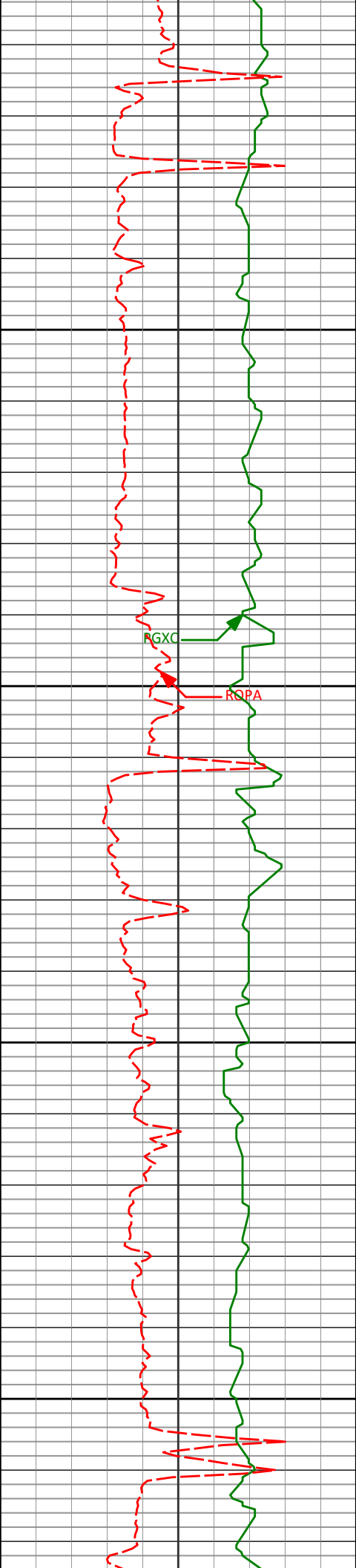
3708'

0.75°

209.64°

3704.40'

-39.44'



3800'

3803'

0.64°

193.84°

3799.40'

-40.49'

3850'

RGXC

ROPA

3900'

3898'

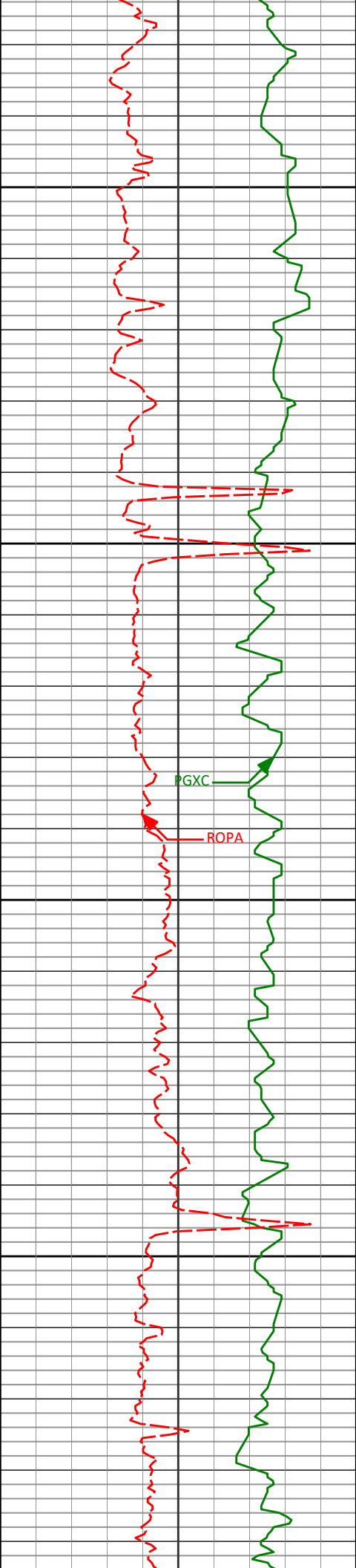
0.34°

167.82°

3894.39'

-41.28'

3950'



4000'

4050'

4100'

4150'

3993'

0.39°

70.58°

3989.39'

-41.45'

4087'

0.76°

161.29°

4083.39'

-41.94'

4182'

1.13°

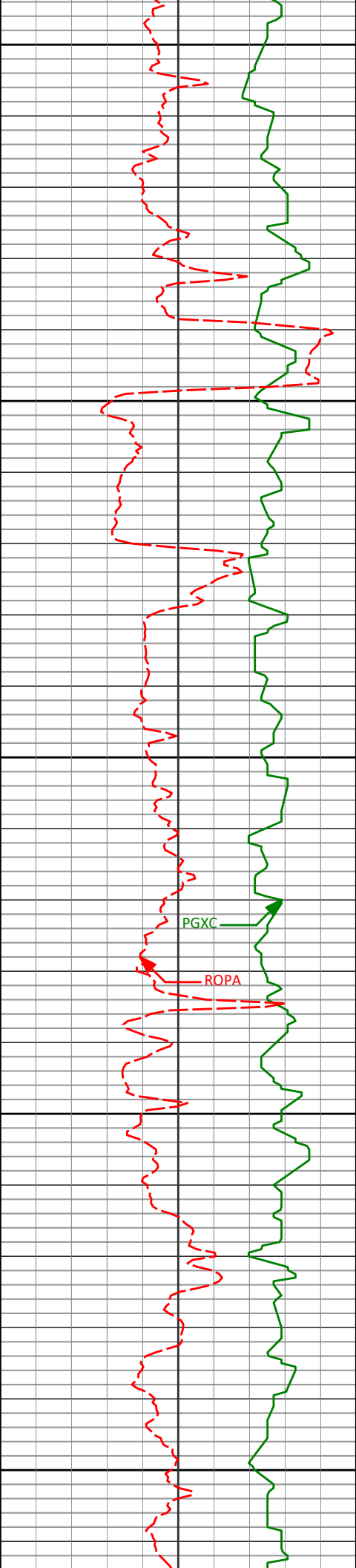
160.26°

4178.37'

-43.42'

PGXC

ROPA



4200'

4250'

4300'

4350'

4400'

4277'

0.19°

223.98°

4273.37'

-44.42'

PGXC

ROPA

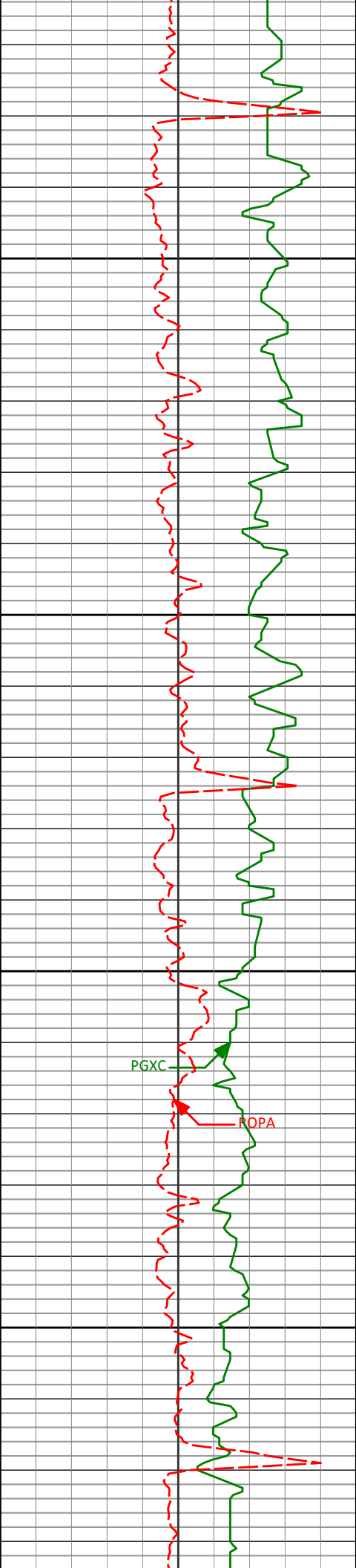
4372'

0.82°

115.20°

4368.36'

-44.82'



4450'

4467'

0.71°

111.38°

4463.36'

-45.32'

4500'

4550'

4562'

0.70°

96.50°

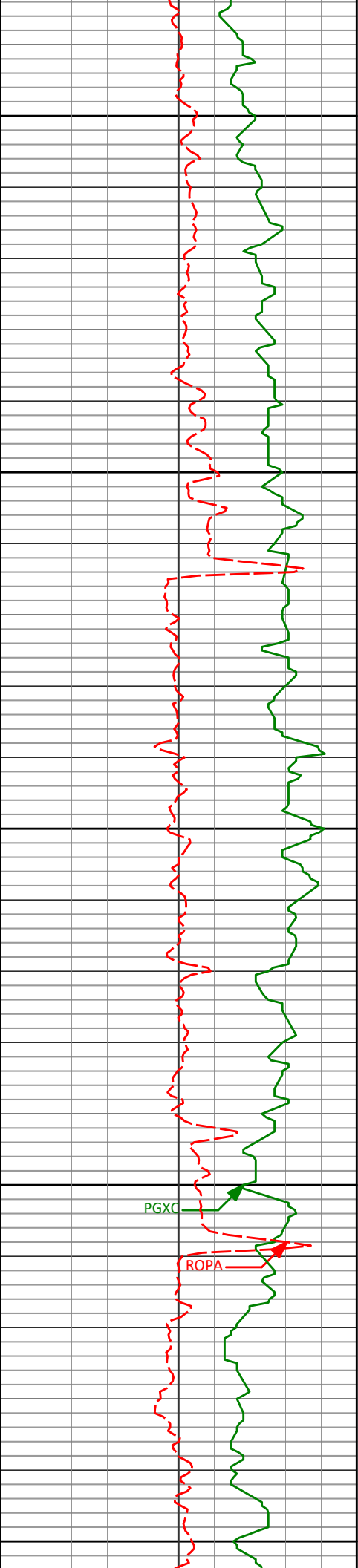
4558.35'

-45.60'

PGXC

ROPA

4600'



4650'

4656'

0.44°

85.71°

4652.34'

-45.64'

4700'

4750'

4751'

0.39°

98.79°

4747.34'

-45.66'

4800'

PGXC

ROPA

4850'

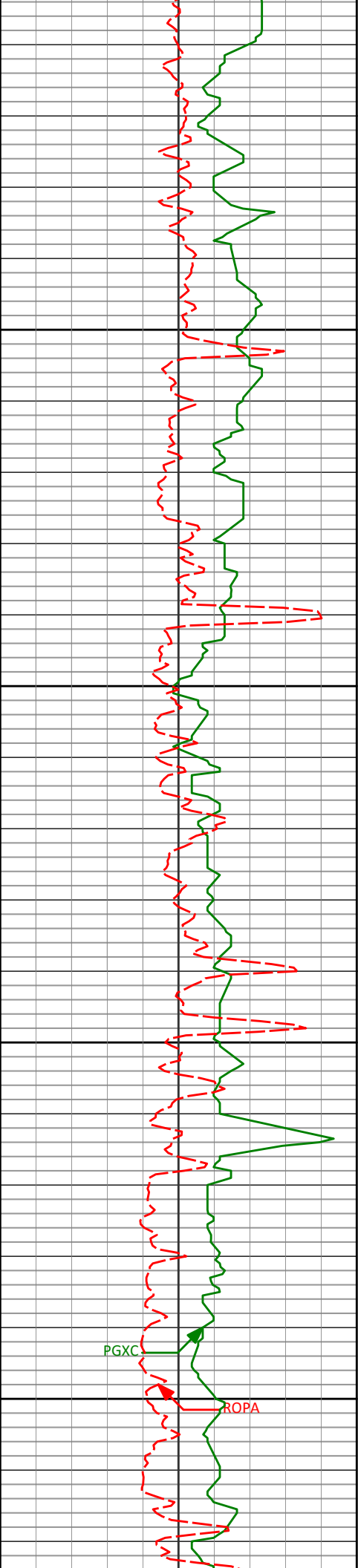
4846'

0.31°

110.37°

4842.34'

-45.80'



4900'

4941'

0.43°

131.42°

4937.34'

-46.13'

4950'

5000'

5036'

0.49°

144.55°

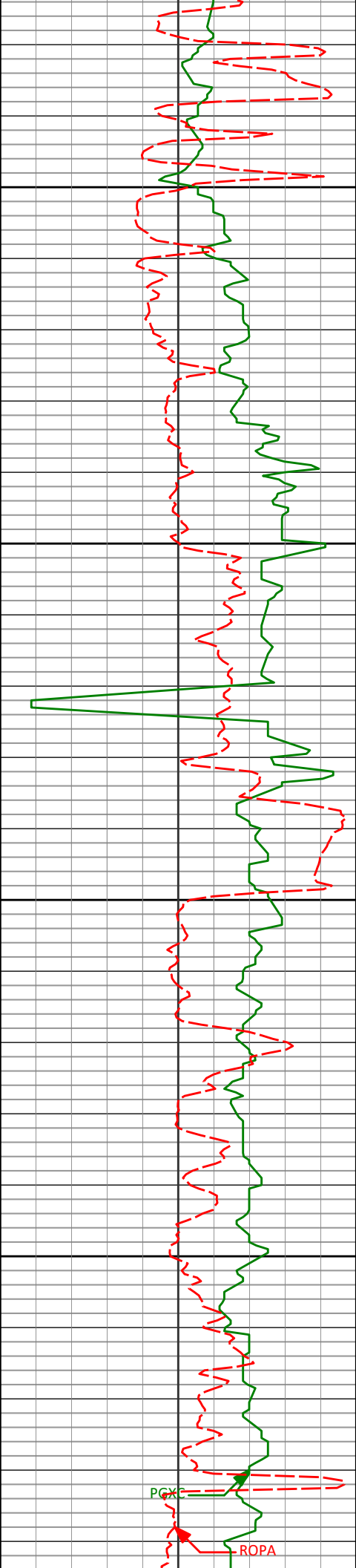
5032.33'

-46.69'

5050'

PGXC

ROPA



5100'

5131'

0.07°

278.99°

5127.33'

-47.01'

5150'

5200'

5226'

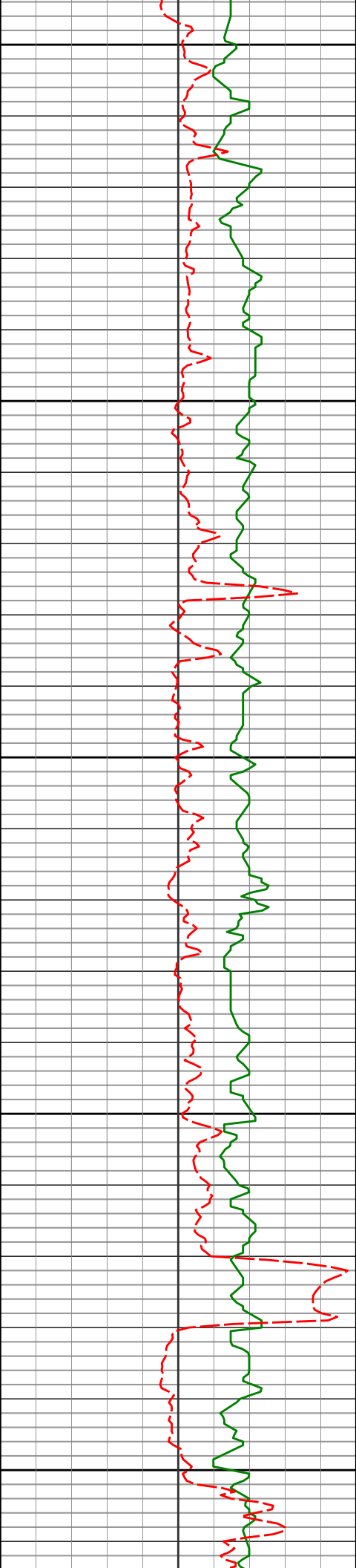
0.95°

52.04°

5222.33'

-46.52'

5250'



5300'

5321'

0.66°

47.86°

5317.32'

-45.66'

5350'

5400'

5415'

0.52°

125.60°

5411.32'

-45.55'

5450'

5500'

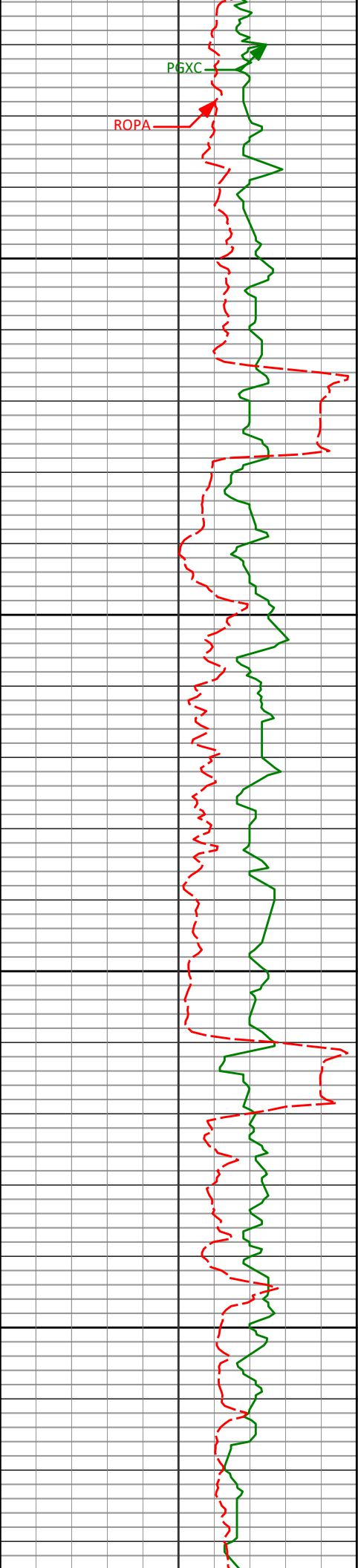
5510'

1.24°

105.13°

5506.30'

-46.07'



5550'

5600'

5650'

5700'

5605'

0.90°

84.54°

5601.29'

-46.27'

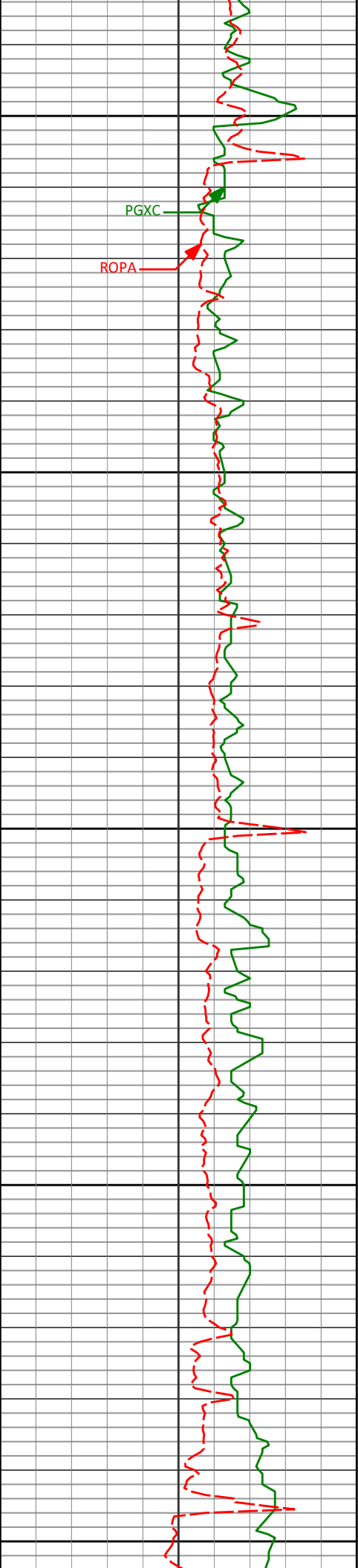
5700'

0.68°

53.54°

5696.28'

-45.86'



5750'

5800'

5850'

5900'

5950'

PGXC

ROPA

5795'	0.22°	299.87°	5791.28'	-45.44'
-------	-------	---------	----------	---------

5890'	0.30°	20.75°	5886.28'	-45.11'
-------	-------	--------	----------	---------



6000'

6050'

6100'

6150'

5985'

0.09°

299.27°

5981.28'

-44.84'

6080'

0.47°

51.05°

6076.27'

-44.56'

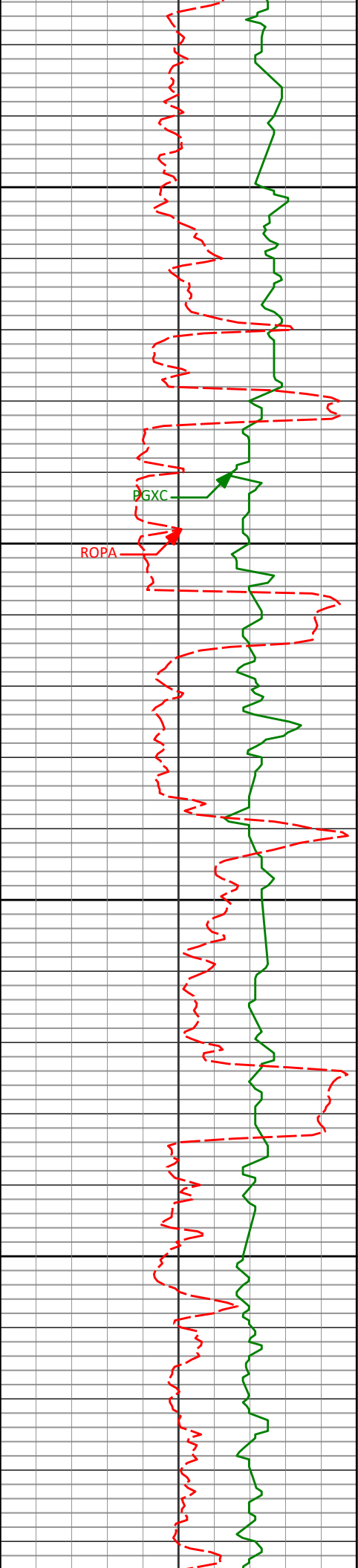
6175'

0.25°

174.81°

6171.27'

-44.52'



6200'

6250'

6300'

6350'

6269'

0.40°

163.56°

6265.27'

-45.05'

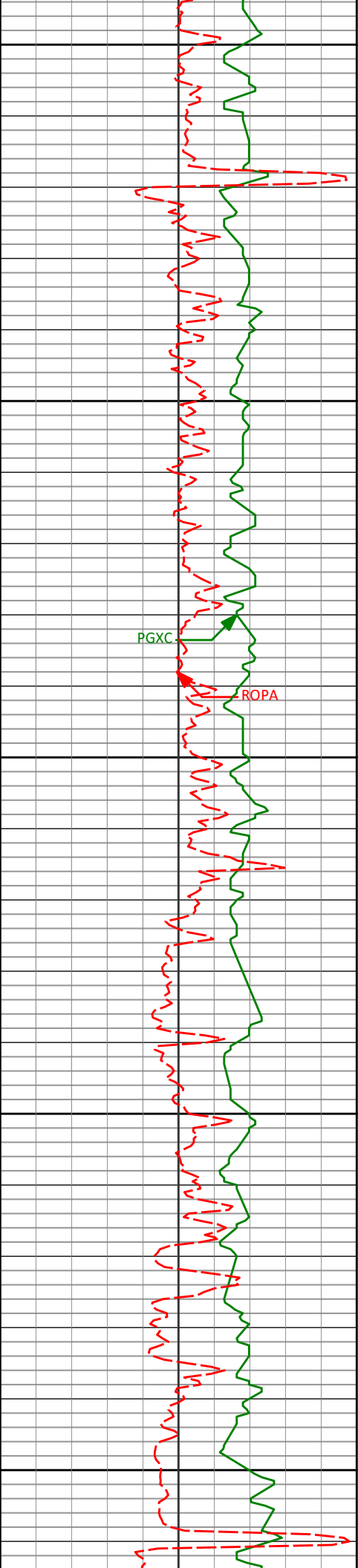
6364'

0.60°

75.93°

6360.27'

-45.25'



6400'

6450'

6500'

6550'

6600'

6459'

0.56°

53.52°

6455.27'

-44.85'

PGXC

ROPA

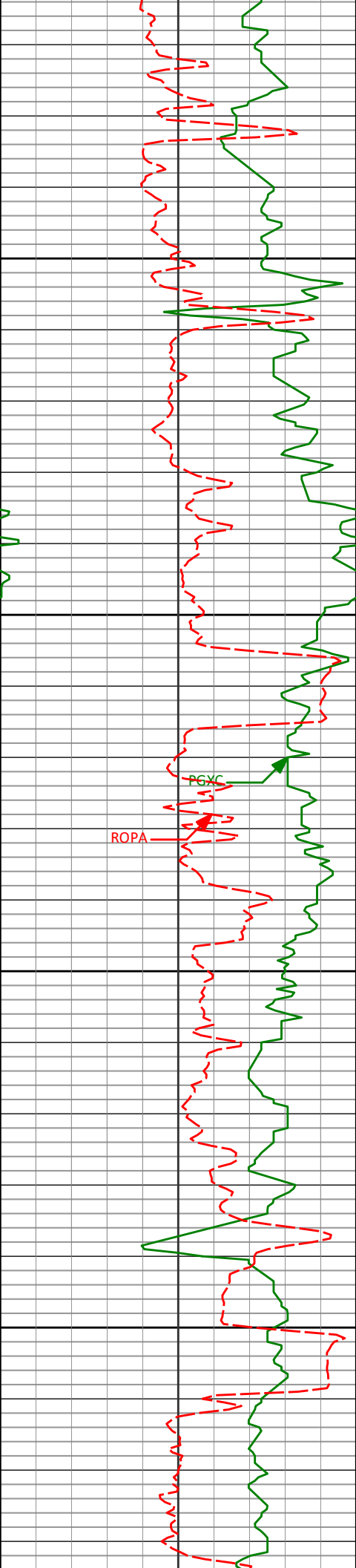
6554'

0.48°

78.65°

6550.26'

-44.49'



6650'

6649'

0.84°

115.05°

6645.26'

-44.71'

6700'

6750'

6800'

6744'

1.02°

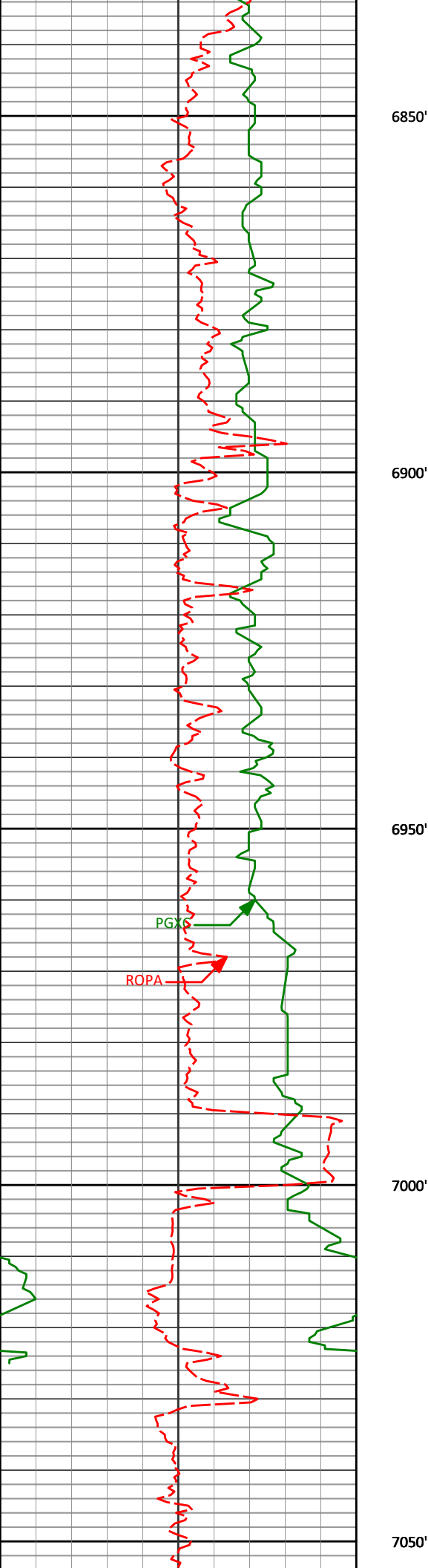
86.73°

6740.24'

-44.96'

ROPA

PGXC



6839'	0.78°	53.90°	6835.23'	-44.52'
-------	-------	--------	----------	---------

6850'

6900'

6934'	1.10°	119.68°	6930.22'	-44.59'
-------	-------	---------	----------	---------

6950'

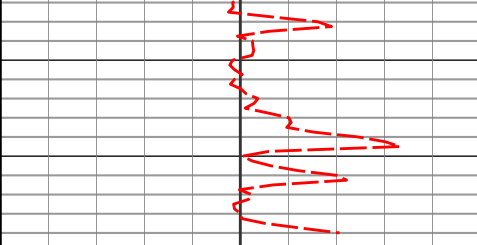
PGXS

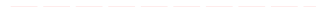

ROPA

7000'

7010'	0.85°	129.54°	7006.21'	-45.32'
-------	-------	---------	----------	---------

7050'



Avg Rate of Penetration ROPA  500 feet per hr 0		TVD ft	Depth Inc. Azi. TVD V.S.				
PCG Gamma Ray PGRC  0 api 200							