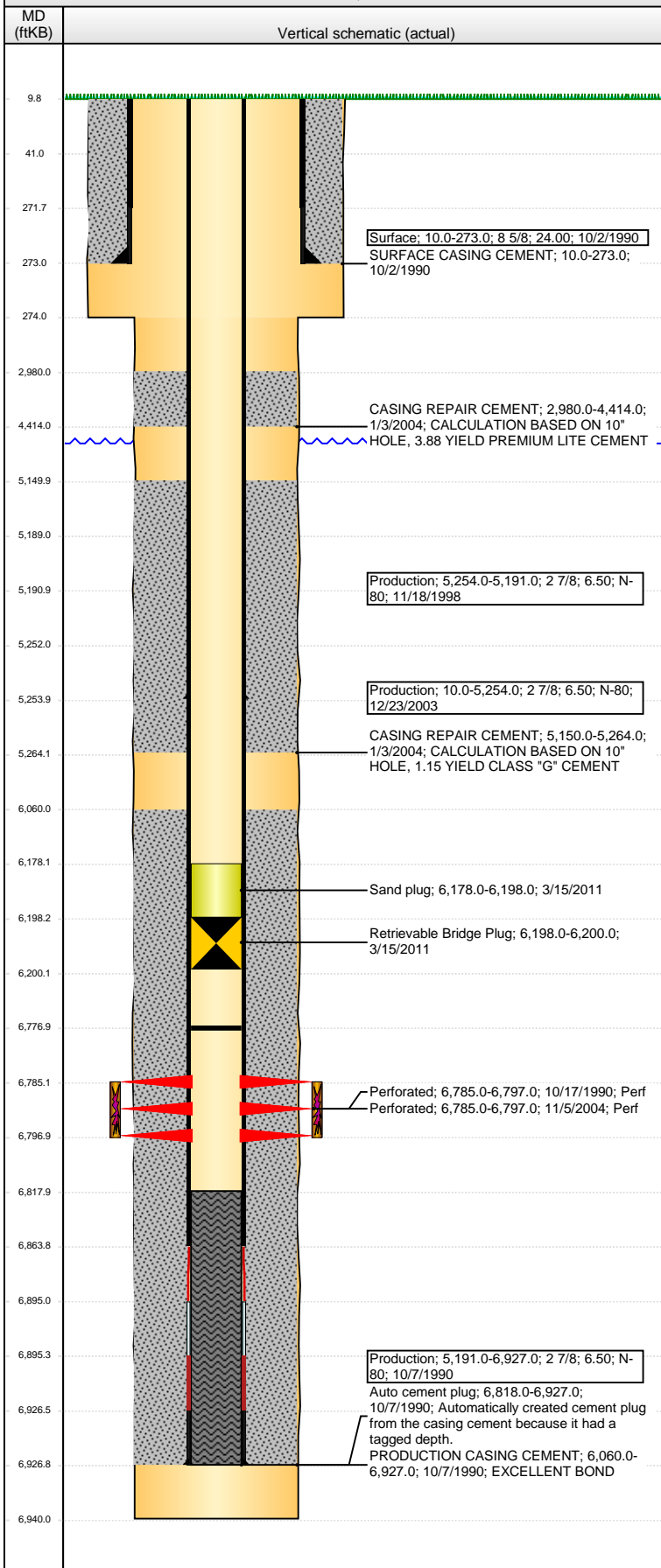


**Well Name: LARSON A25-15**

VERTICAL - ORIGINAL HOLE, 9/12/2013 10:04:03 AM



## Well Header

API	Business Unit	District	Well Config
05-123-14749	WATTENBERG	15	VERTICAL
Original KB Elevation (ft)	KB - GL / MSL (ftKB)	Spud Date	P & A Date
4,646.00	10.00	10/2/1990	

## Comment

2 CASING REPAIRS, ONE IN 1998 AND ONE IN 2003. CASING PATCH @ +/- 5254 AND CEMENT STAGES ESTIMATED FROM ANNULAR FILL FROM CASING REPAIR IN 2003.

## Directions To Well

WCR 64 & WCR 59 EAST 0.6 MILES, NORTH 0.1 MILES, EAST INTO

## Congressional Location

Quarter 1	Quarter 2	Quarter 3	Quarter 4	Section	Township	Twnshp N...	Range	Rng E/W Dir
	SW	SE		25	6	N	64	W

## Bottom Hole Location

North-South Distance (ft)	From N or S Line	East-West Distance (ft)	From E or W Line

## Plug Back Total Depths

Date	Depth (ftKB)	Method	Com
10/7/1990	6,895.0	CASING TALLY	TOP OF LATCH DOWN BAFFLE
11/4/2004	6,818.0	CASED HOLE LOG	CBL DEPTH LOGGER
3/14/2011	6,777.0	TAG	HOLE IN CASING.

## Wellbore Sections

Section Des	Size (in)	Act Top (ftKB)	Act Btm (ftKB)
SURFACE	12 1/4	10.0	274.0
PRODUCTION	7 7/8	274.0	6,940.0

## Zone Statuses

Zone Name	Status Date	Status	Job
CODELL	10/30/1990	PR	DRILLING/COMPLETION - ORIGINAL, 10/2/1990 00:00
CODELL	11/17/2004	PR	RE-FRAC, 11/4/2004 00:00

## Casing Strings

### Surface, 273.0ftKB

Casing Description	Run Date	OD (in)	Wt/Len (l...)	Grade	Top (ftKB)	MD (ftKB)
Surface	10/2/1990	8 5/8	24.00		10.0	273.0

### Production, 5,191.0ftKB

Casing Description	Run Date	OD (in)	Wt/Len (l...)	Grade	Top (ftKB)	MD (ftKB)
Production	11/18/1998	2 7/8	6.50	N-80	10.0	5,191.0

### Production, 5,254.0ftKB

Casing Description	Run Date	OD (in)	Wt/Len (l...)	Grade	Top (ftKB)	MD (ftKB)
Production	12/23/2003	2 7/8	6.50	N-80	10.0	5,254.0

### Production, 6,927.0ftKB

Casing Description	Run Date	OD (in)	Wt/Len (l...)	Grade	Top (ftKB)	MD (ftKB)
Production	10/7/1990	2 7/8	6.50	N-80	10.0	6,927.0

## Cement

Description	Top Depth (ftKB)	Bottom Depth (ftKB)
SURFACE CASING CEMENT	10.0	273.0
PRODUCTION CASING CEMENT	6,060.0	6,927.0
CASING REPAIR CEMENT	2,980.0	4,414.0
CASING REPAIR CEMENT	5,150.0	5,264.0

## Tubing Components

Item Des	OD (in)	Wt (lb/ft)	Grade	Jts	Len (ft)	Btm (ftKB)	Btm (TVD) (ftKB)

## Perforation Data

Zone	Bnch/St g	Entered Shot Total	Top (ftKB)	Btm (ftKB)	Date
CODELL, ORIGINAL HOLE		26	6,785.00	6,797.00	10/17/1990
CODELL, ORIGINAL HOLE		48	6,785.00	6,797.00	11/5/2004

## Stimulations & Treatments

Date	Zone	Primary Job Type	
10/18/1990	CODELL, ORIGINAL HOLE	DRILLING/COMPLETION - ORIGINAL	
Technical Result		Tech Result Details	Tech Result Note
Comment			

**Well Name: LARSON A25-15**

VERTICAL - ORIGINAL HOLE, 9/12/2013 10:04:05 AM

## Stimulations & Treatments

Date 11/11/2004	Zone CODELL, ORIGINAL HOLE	Primary Job Type RE-FRAC
Technical Result	Tech Result Details	Tech Result Note
Comment		

## Other In Hole

Run Date	Des	OD (in)	Top (ftKB)	Btm (ftKB)
3/15/2011	Retrievable Bridge Plug	2.441	6,198.0	6,200.0
3/15/2011	Sand plug	2.441	6,178.0	6,198.0

## Logs

Date	Type	Top (ftKB)	Btm (ftKB)
10/7/1990	COMPENSATED DENSITY	3,480.0	6,923.0
10/11/1990	CBL/CCL/GR	6,000.0	6,813.0
3/14/2011	GYRO	10.0	6,777.0

