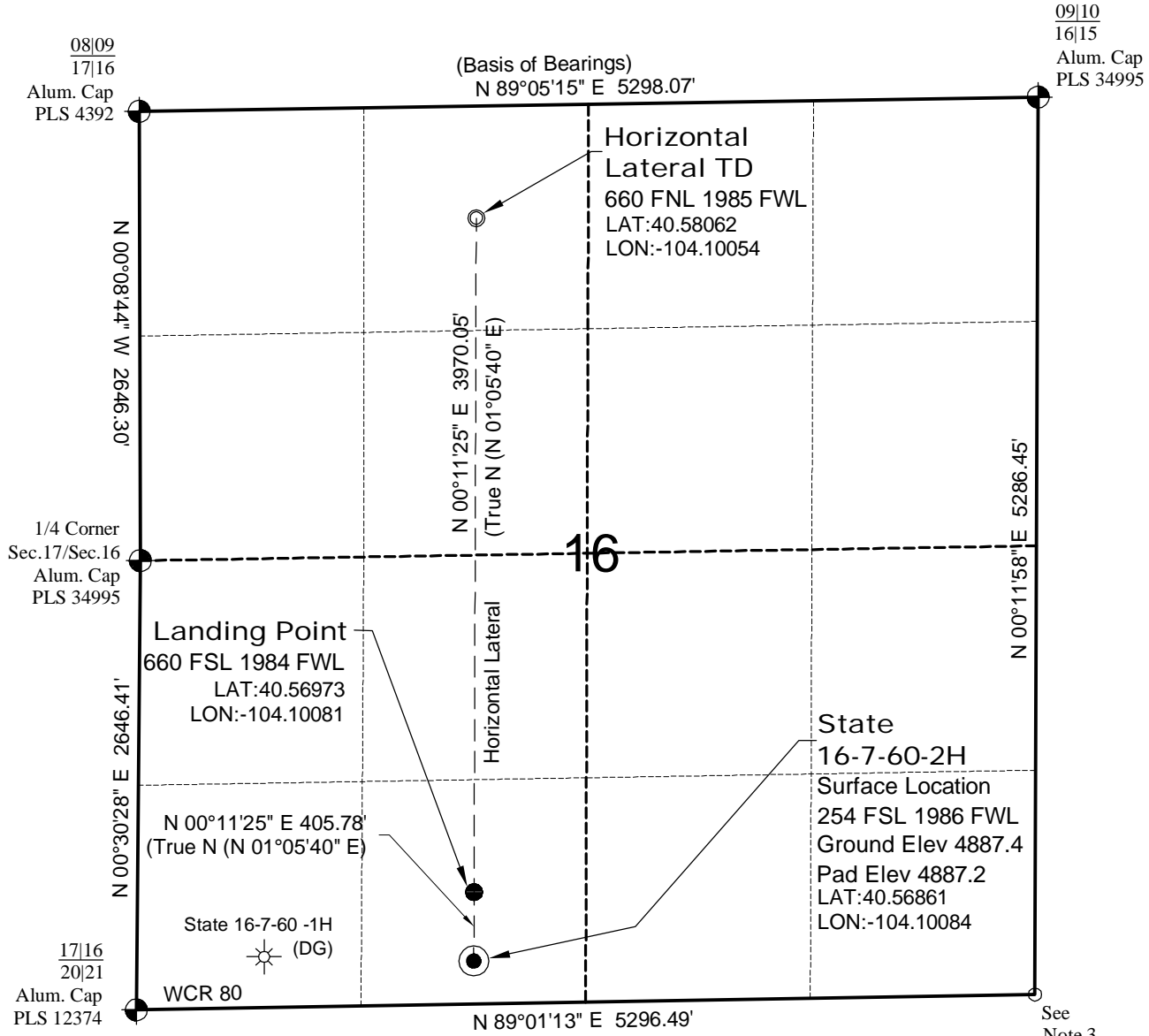


# WELL LOCATION MAP

STATE 16-7-60-2H  
PAD

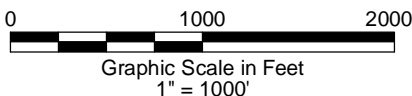


## SURVEYOR'S STATEMENT

The undersigned hereby states that the well location shown hereon was staked on the ground based on existing monumentation and/or physical evidence found in the field and is correct to the best of my knowledge, information and belief.

## NOTES

- 1.) Horizontal (NAD 83) and vertical (NAVD 88) datum is based on the Leica Geosystems SmartNet of Colorado.
  - 2.) All directions, distances, and dimensions shown hereon are based on coordinates from the "Colorado coordinate system of 1983 north zone" (article 52 of title 38, C.R.S.).
  - 3.) All section line dimensions shown hereon are based on field measurements of existing monuments and/or physical evidence found in the field unless otherwise indicated. Refer to well plats filed with the COGCC.
  - 4.) Physical features shown hereon are for graphical representation only.
  - 5.) See Form 2A for visible improvements within 500' of wellhead.
  - 6.) Distances to nearest section lines are measured perpendicularly.
  - 7.) This is not a land survey nor land survey plat.
  - 8.) Date of Survey 8/28/13; Date of Drawing 8/30/13. REV 0
- PDOP Reading: 2.0 Instrument Operator: Marc Woodard



**CONDOR ENERGY TECHNOLOGY LLC**  
STATE 16-7-60-2H  
  
SL SE1/4 SW1/4 SEC. 16 T7N R60W  
HL TD NE1/4 NW1/4 SEC. 16 T7N R60W  
6th PM WELD COUNTY COLORADO