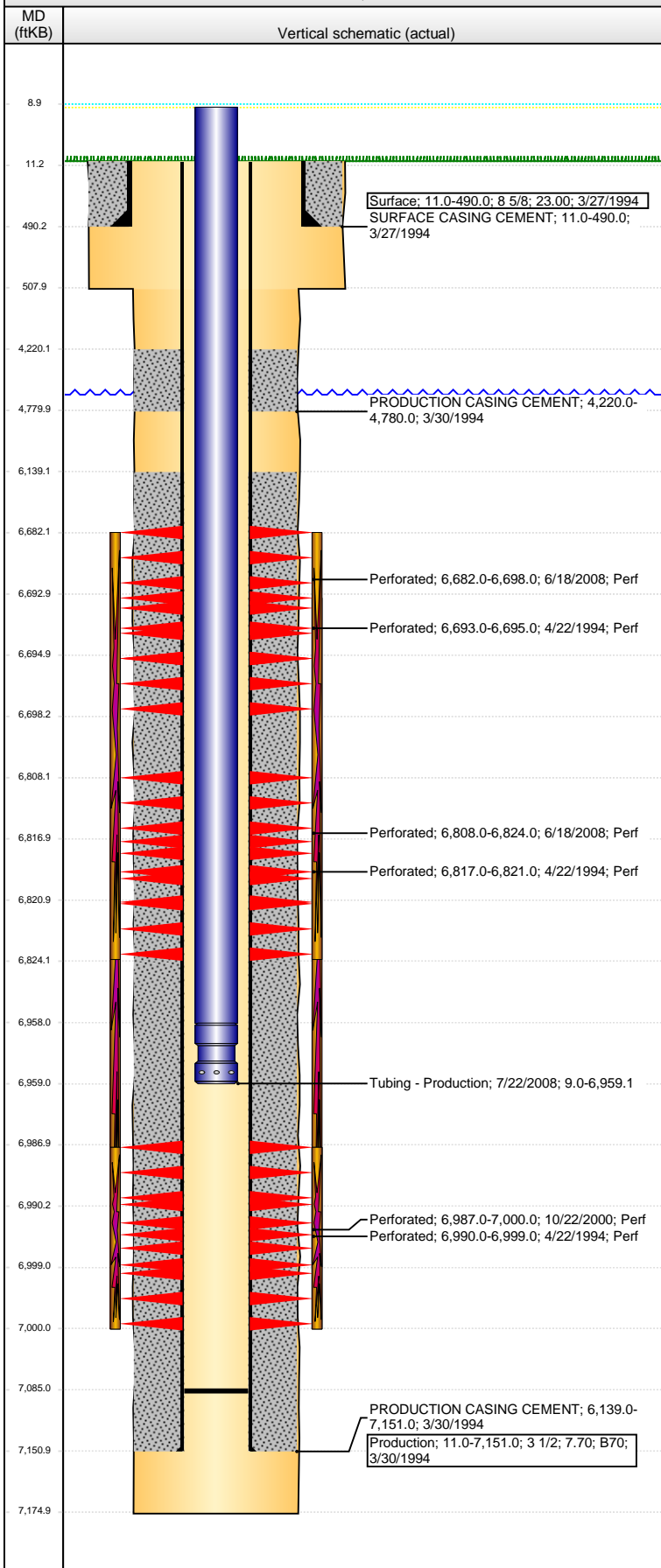


Well Name: HARRINGTON 15-11H5

VERTICAL - ORIGINAL HOLE, 9/11/2013 2:25:37 PM



Well Header

API	Business Unit	District	Well Config
05-123-17992	WATTENBERG	15	VERTICAL
Original KB Elevation (ft)	KB - GL / MSL (ftKB)	Spud Date	P & A Date
4,636.00	11.00	3/26/1994	
Comment			

Directions To Well

BUSINESS 34 AND 24TH STREET, WEST 4/10, SOUTH INTO

Congressional Location

Quarter 1	Quarter 2	Quarter 3	Quarter 4	Section	Township	Twnshp N...	Range	Rng E/W Dir
		NE	SW	15	5	N	65	W

Bottom Hole Location

North-South Distance (ft)	From N or S Line	East-West Distance (ft)	From E or W Line

Plug Back Total Depths

Date	Depth (ftKB)	Method	Com
4/21/1994	7,106.0	CASED HOLE LOG	CBL DEPTH LOGGER
7/22/2008	7,085.0	TAG	TUBING TALLY

Wellbore Sections

Section Des	Size (in)	Act Top (ftKB)	Act Btm (ftKB)
SURFACE	12 1/4	11.0	508.0
PRODUCTION	7 7/8	508.0	7,175.0

Zone Statuses

Zone Name	Status Date	Status	Job
CODELL	5/14/1994	PR	DRILLING - ORIGINAL, 3/26/1994 00:00
CODELL	10/28/2000	PR	RE-FRAC, 10/23/2000 00:00
CODELL	7/28/2006	PR	TRI-FRAC, 6/20/2006 00:00
CODELL	6/17/2008	SI	RE-FRAC, 6/16/2008 12:00
CODELL	7/28/2008	PR	RE-FRAC, 6/16/2008 12:00
NIOBRARA	5/14/1994	PR	DRILLING - ORIGINAL, 3/26/1994 00:00
NIOBRARA	7/2/2008	PR	RE-FRAC, 6/16/2008 12:00
NIOBRARA	7/28/2008	PR	RE-FRAC, 6/16/2008 12:00

Casing Strings

Surface, 490.0ftKB

Casing Description	Run Date	OD (in)	Wt/Len (l...)	Grade	Top (ftKB)	MD (ftKB)
Surface	3/27/1994	8 5/8	23.00		11.0	490.0

Production, 7,151.0ftKB

Casing Description	Run Date	OD (in)	Wt/Len (l...)	Grade	Top (ftKB)	MD (ftKB)
Production	3/30/1994	3 1/2	7.70	B70	11.0	7,151.0

Cement

Description	Top Depth (ftKB)	Bottom Depth (ftKB)
SURFACE CASING CEMENT	11.0	490.0
Description	Top Depth (ftKB)	Bottom Depth (ftKB)
PRODUCTION CASING CEMENT	4,220.0	4,780.0
Description	Top Depth (ftKB)	Bottom Depth (ftKB)
PRODUCTION CASING CEMENT	6,139.0	7,151.0

Tubing Components

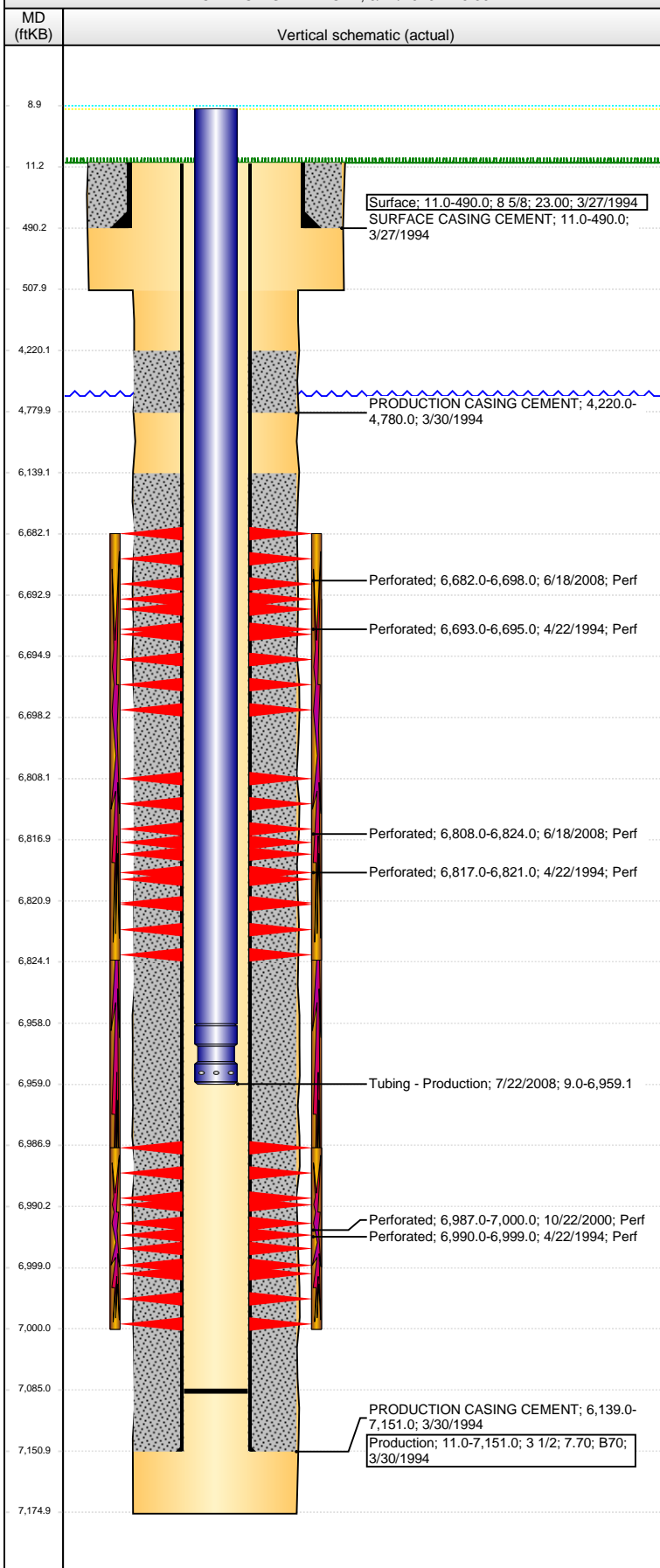
Item Des	OD (in)	Wt (lb/ft)	Grade	Jts	Len (ft)	Btm (ftKB)	Btm (TVD) (ftKB)
Tubing	2 1/16	3.25	J-55	214	6,949.00	6,958.0	
Notched Seating Nipple	2 1/16			1	1.10	6,959.1	

Perforation Data

Zone	Bnch/St g	Entered Shot Total	Top (ftKB)	Btm (ftKB)	Date
NIOBRARA, ORIGINAL HOLE	A	64	6,682.00	6,698.00	6/18/2008
NIOBRARA, ORIGINAL HOLE	A	2	6,693.00	6,695.00	4/22/1994
NIOBRARA, ORIGINAL HOLE	B	64	6,808.00	6,824.00	6/18/2008
NIOBRARA, ORIGINAL HOLE	B	4	6,817.00	6,821.00	4/22/1994
CODELL, ORIGINAL HOLE		52	6,987.00	7,000.00	10/22/2000
CODELL, ORIGINAL HOLE		9	6,990.00	6,999.00	4/22/1994

Well Name: HARRINGTON 15-11H5

VERTICAL - ORIGINAL HOLE, 9/11/2013 2:25:39 PM



Stimulations & Treatments

Date	4/26/1994	Zone	NIORBARA-CODELL, ORIGINAL HOLE	Primary Job Type	DRILLING - ORIGINAL
Technical Result		Tech Result Details		Tech Result Note	
Comment					
LIMITED ENTRY					
Date	10/23/2000	Zone	CODELL, ORIGINAL HOLE	Primary Job Type	RE-FRAC
Technical Result		Tech Result Details		Tech Result Note	
Failure		Screen-out			
Comment					
Attempted refrac, pkr failed 10/18/00					
Date	6/20/2006	Zone	CODELL, ORIGINAL HOLE	Primary Job Type	TRI-FRAC
Technical Result		Tech Result Details		Tech Result Note	
Comment					
Date	6/30/2008	Zone	NIORBARA, ORIGINAL HOLE	Primary Job Type	RE-FRAC
Technical Result		Tech Result Details		Tech Result Note	
Comment					
(NIORBARA RF): EXTRA 12,000 LBS OF 30/50 SAND WAS HAULED TO LOCATION. DECISION WAS MADE TO PUMP EXTRA PROPPANT IF ENOUGH WATER. 2033 SLURRY BBLS (1 PSA STAGE) INTO JOB STINGER CASING SAVER STARTED LEAKING. FLUSHED WELL WITH LINEAR GEL. MULTIPLE ATTEMPTS AND OVER A HOUR TRYING TO FIX LEAK, RIG DOWN STINGER. RU BJ TO 5000 PSI WELLHEAD. RESUME JOB WITH 5000 PSI MAX. ORDERED 2 TRANSPORTS OF WATER, ADDED 200 BBL X-LINK PAD AND INCREASED SAND STAGES 0.15 PSA TO COMPENSATE FOR SHORTAGE OF WATER. REMAINDER OF JOB WENT WELL WITH A SLIGHTLY POSITIVE NOLTE AND AGGRESSIVE SLOTE OF +0.6 DURING 4 PSA STAGE. TOTALIZED 7.5% LONG ON SAND.					
Other In Hole					
Run Date	Des			OD (in)	Top (ftKB)
					Btm (ftKB)
Logs					
Date	Type			Top (ftKB)	Btm (ftKB)
3/31/1994	Induction			490.0	7,172.0
4/21/1994	Cement Bond			4,100.0	7,101.0
8/31/2013	GYRO			11.0	6,900.0