

T6S, R96W, 6th P.M.

BERRY PETROLEUM COMPANY

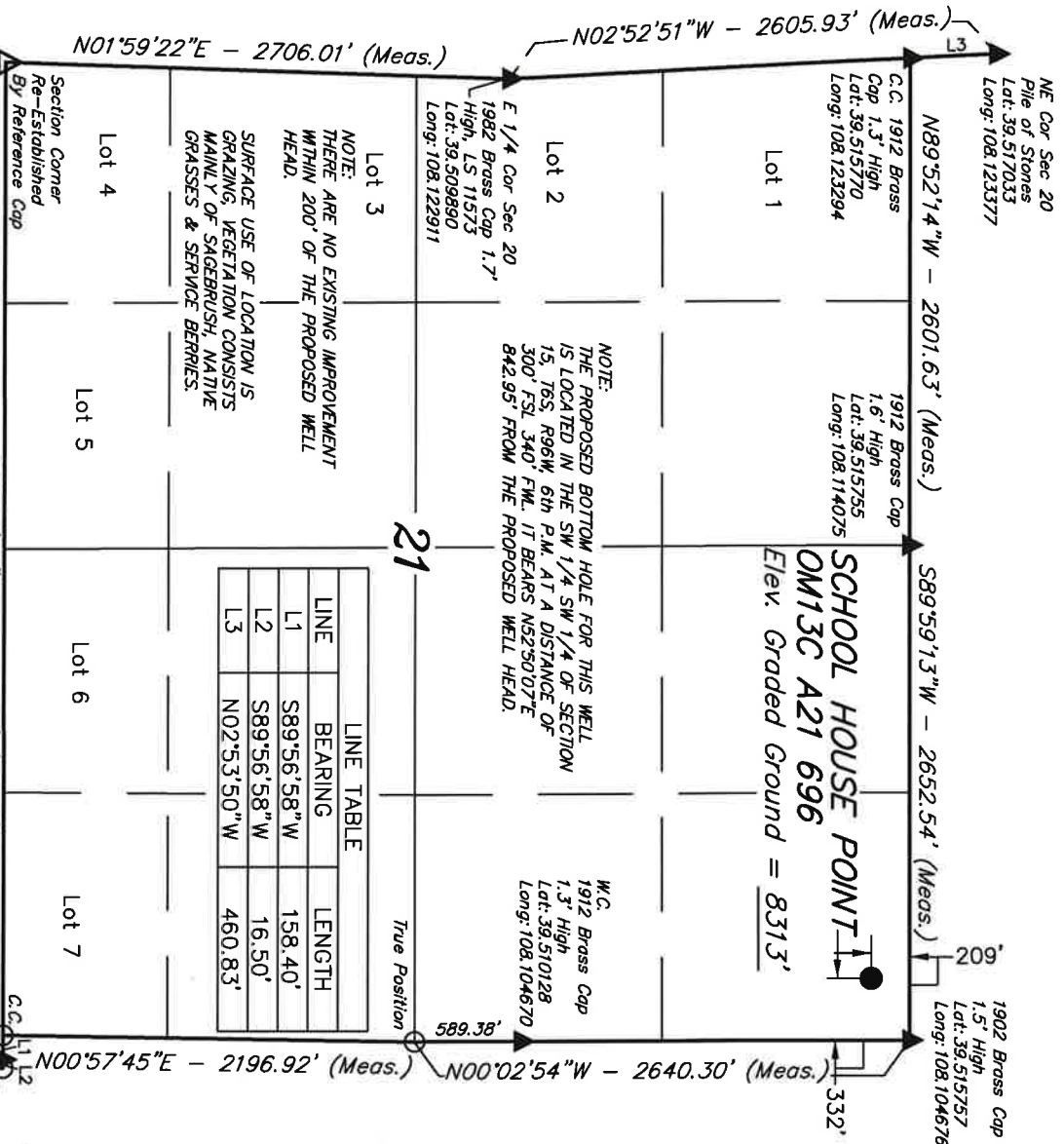
Well location, SCHOOL HOUSE POINT OM13C A21 696 (SURFACE LOCATION), located as shown in the NE 1/4 NE 1/4 of Section 21, T6S, R96W, 6th P.M., Garfield County, Colorado.

BASIS OF ELEVATION

SPOT ELEVATION AT THE NORTHWEST CORNER OF SECTION 30, T5S, R95W, 6th P.M. TAKEN FROM THE FORKED GULCH QUADRANGLE, COLORADO, GARFIELD COUNTY, 7.5 MINUTE SERIES (TOPOGRAPHICAL MAP) PUBLISHED BY THE UNITED STATES DEPARTMENT OF THE INTERIOR, GEOLOGICAL SURVEY. SAID ELEVATION IS MARKED AS BEING 5966 FEET.

BASIS OF BEARINGS

BASIS OF BEARINGS IS A G.P.S. OBSERVATION.



THIS IS TO CERTIFY THAT THE ABOVE PLAT WAS PREPARED FROM FIELD NOTES OF ACTUAL SURVEYS MADE BY ME OR UNDER MY SUPERVISION AND THAT THE SAME ARE TRUE AND CORRECT TO THE BEST OF MY KNOWLEDGE AND BELIEF.

Revised: 09-19-08 D.R.B.

REGISTERED LAND SURVEYOR  
REGISTRATION NO. 12462  
STATE OF COLORADO

UNTAR ENGINEERING & LAND SURVEYING  
85 SOUTH 200 EAST - VERNAL, UTAH 84078  
(435) 789-1017

SCALE 1" = 1000' DATE SURVEYED: 05-04-07 DATE DRAWN: 07-19-07

PARTY G.O. C.R. D.R.B. REFERENCES G.L.O. PLAT WEATHER WARM FILE BERRY PETROLEUM COMPANY

LEGEND:

- 90° SYMBOL
- PROPOSED WELL HEAD.
- SECTION CORNERS LOCATED.

C.C. 1912 Brass  
Cap 1.5' High  
Lat: 39.531628  
Long: 108.104699

Well location, SCHOOL HOUSE POINT OM13C A21 696 (TARGET BOTTOM HOLE), located as shown in the SW 1/4 SW 1/4 of Section 15, T6S, R96W, 6th P.M., Garfield County, Colorado.

## BASIS OF ELEVATION

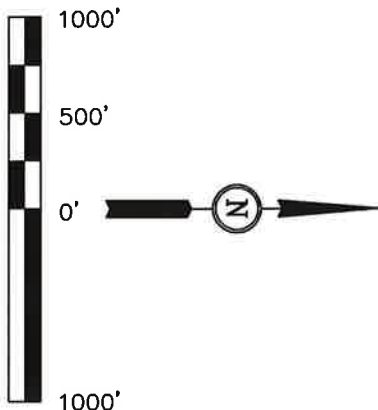
SPOT ELEVATION AT THE NORTHWEST CORNER OF SECTION 30, T5S, R95W, 6th P.M. TAKEN FROM THE FORKED GULCH QUADRANGLE, COLORADO, GARFIELD COUNTY, 7.5 MINUTE SERIES (TOPOGRAPHICAL MAP) PUBLISHED BY THE UNITED STATES DEPARTMENT OF THE INTERIOR, GEOLOGICAL SURVEY. SAID ELEVATION IS MARKED AS BEING 5966 FEET.

## BASIS OF BEARINGS

BASIS OF BEARINGS IS A G.P.S. OBSERVATION

LINE TABLE		
LINE	BEARING	LENGTH
L1	N00°58'24"W	508.49'
L2	S89°59'08"W	561.00'
L3	S89°55'00"W	330.00'

NOTE: THE PROPOSED BOTTOM HOLE FOR THIS WELL IS LOCATED IN THE SW 1/4 SW 1/4 OF SECTION 15, T6S, R96W 6th PM. AT A DISTANCE OF 300' T6S 340' FWL. IT BEARS N52.50°7'E 842.95' FROM THE PROPOSED WELL HEAD.



# SCALE CERTIFICATE

THIS IS TO CERTIFY THAT THE ABOVE PLAT WAS PREPARED FROM FIELD NOTES OF ACTUAL SURVEYS MADE BY ME OR UNDER MY SUPERVISION AND THAT THE SAME ARE TRUE AND CORRECT TO THE BEST OF MY KNOWLEDGE AND BELIEF.

Revised: 09-19-08 D.R.B.

**UINTAH ENGINEERING & LAND SURVEYING**  
85 SOUTH 200 EAST - VERNAL, UTAH 84078  
(435) 789-1017

SCALE 1" = 1000'	DATE SURVEYED: 05-04-07	DATE DRAWN: 07-19-07
---------------------	----------------------------	-------------------------

[illegible]

WEATHER

L = 90° SYMBOL  
 ● = PROPOSED WELL HEAD.  
 ▲ = SECTION CORNERS LOCATED.

LEGEND: OM13C A21 696  
SURFACE LOCATION

## SCHOOL HOUSE POINT

AS-PIITT  
589.59 08 W - 2635.56 (Meas.)

WEST - 2640.00' (G.L.O.)

```
NAD 83 (TARGET BOTTOM HOLE)
LATITUDE = 39.3059.69 (39.516581)
LONGITUDE = 108.0612.50 (108.1034722)

NAD 27 (TARGET BOTTOM HOLE)
LATITUDE = 39.3059.77 (39.516603)
LONGITUDE = 108.0610.22 (108.102839)
```