

T6S, R96W, 6th P.M.

BOTTOM HOLE

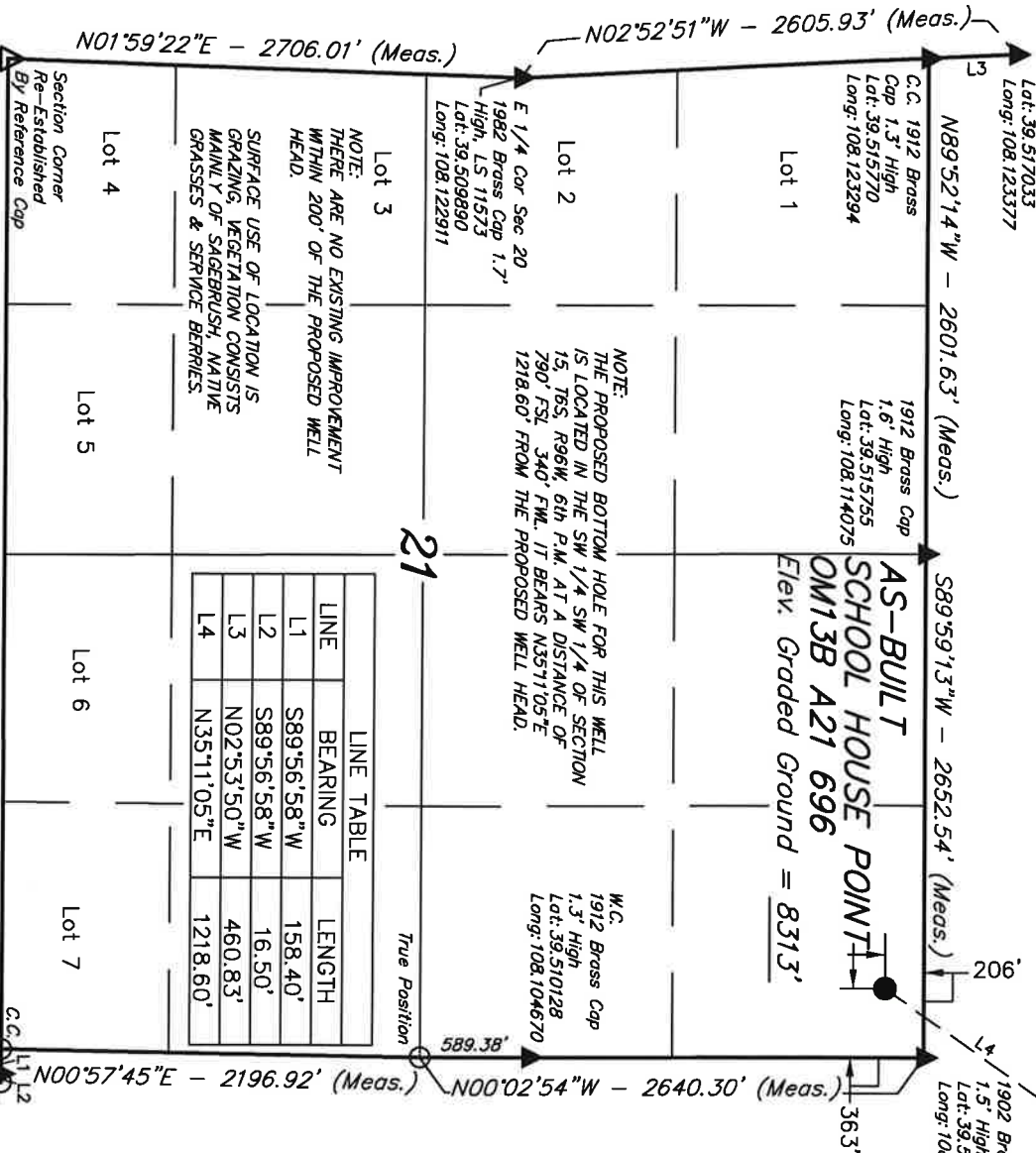
Well location, SCHOOL HOUSE POINT OM13B A21 696 (SURFACE LOCATION), located as shown in the NE 1/4 NE 1/4 of Section 21, T6S, R96W, 6th P.M., Garfield County, Colorado.

BASIS OF ELEVATION

SPOT ELEVATION AT THE NORTHWEST CORNER OF SECTION 30, T5S, R95W, 6th P.M. TAKEN FROM THE FORKED GULCH QUADRANGLE, COLORADO, GARFIELD COUNTY, 7.5 MINUTE SERIES (TOPOGRAPHICAL MAP) PUBLISHED BY THE UNITED STATES DEPARTMENT OF THE INTERIOR, GEOLOGICAL SURVEY. SAID ELEVATION IS MARKED AS BEING 5966 FEET.

BASIS OF BEARINGS

BASIS OF BEARINGS IS A G.P.S. OBSERVATION.



- LEGEND:
- = 90° SYMBOL
 - = PROPOSED WELL HEAD.
 - ▲ = SECTION CORNERS LOCATED.

LINE TABLE		
LINE	BEARING	LENGTH
L1	S89°56'58"W	158.40'
L2	S89°56'58"W	16.50'
L3	N02°53'50"W	460.83'
L4	N35°11'05"E	1218.60'

THIS IS TO CERTIFY THAT THE ABOVE PLAT WAS PREPARED FROM FIELD NOTES OF ACTUAL SURVEYS MADE BY ME OR UNDER MY SUPERVISION AND THAT THE SAME ARE TRUE AND CORRECT TO THE BEST OF MY KNOWLEDGE AND BELIEF.

REGISTERED LAND SURVEYOR
REGISTRATION NO. 174592
STATE OF COLORADO

Revised: 09-19-08 D.R.B.

UNTAH ENGINEERING & LAND SURVEYING
86 SOUTH 200 EAST - VERNAL, UTAH 84078
(435) 789-1017

PDOP = 2.2		SCALE	DATE SURVEYED:		DATE DRAWN:
		1" = 1000'	05-04-07		07-19-07
NAD 83 (SURFACE LOCATION)		PARTY	REFERENCES		
LATITUDE = 39.30'54.69" (39.515192)		G.O.	C.R.	D.R.B.	G.L.O. PLAT
LONGITUDE = 108.06'21.46" (108.105961)					
NAD 27 (SURFACE LOCATION)		WEATHER			
LATITUDE = 39.30'54.77" (39.515214)		WARM			
LONGITUDE = 108.06'19.18" (108.105326)		FILE			
		BERRY PETROLEUM COMPANY			

T6S, R96W, 6th P.M.

BERRY PETROLEUM COMPANY

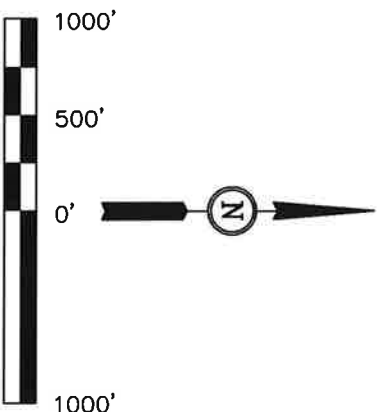
Well location, SCHOOL HOUSE POINT OM13B A21 696 (TARGET BOTTOM HOLE), located as shown in the SW 1/4 SW 1/4 of Section 15, T6S, R96W, 6th P.M., Garfield County, Colorado.

BASIS OF ELEVATION

SPOT ELEVATION AT THE NORTHWEST CORNER OF SECTION 30, T5S, R95W, 6th P.M. TAKEN FROM THE FORKED GULCH QUADRANGLE, COLORADO, GARFIELD COUNTY, 7.5 MINUTE SERIES (TOPOGRAPHICAL MAP) PUBLISHED BY THE UNITED STATES DEPARTMENT OF THE INTERIOR, GEOLOGICAL SURVEY. SAID ELEVATION IS MARKED AS BEING 5966 FEET.

BASIS OF BEARINGS

BASIS OF BEARINGS IS A G.P.S. OBSERVATION.



SCALE
CERTIFICATE

THIS IS TO CERTIFY THAT THE ABOVE PLAT WAS PREPARED FROM FIELD NOTES OF ACTUAL SURVEYS MADE BY ME OR UNDER MY SUPERVISION AND THAT THE SAME ARE TRUE AND CORRECT TO THE BEST OF MY KNOWLEDGE AND BELIEF.

Revised: 09-19-08 D.R.B.

REGISTERED LAND SURVEYOR
REGISTRATION NO. 12592
STATE OF COLORADO

UNTAH ENGINEERING & LAND SURVEYING
85 SOUTH 200 EAST - VERNAL, UTAH 84078
(435) 789-1017

SCALE 1" = 1000'
DATE SURVEYED: 05-04-07
DATE DRAWN: 07-19-07

PARTY G.O. C.R. D.R.B. FILE
WEATHER WARM
BERRY PETROLEUM COMPANY

